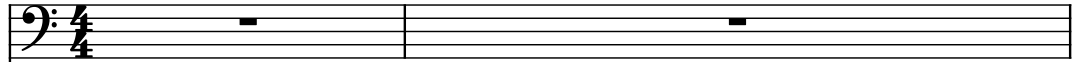
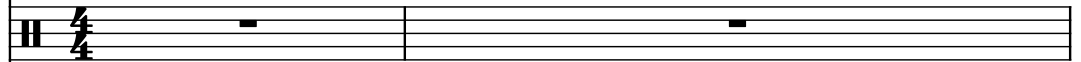


♩ = 117

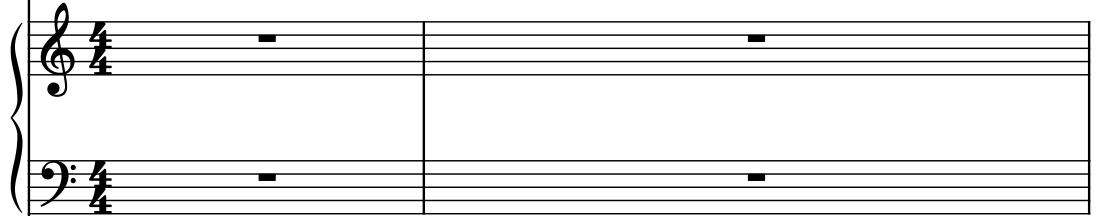
Fretless Electric Bass



Drumset



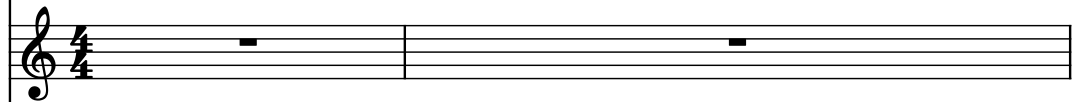
Piano



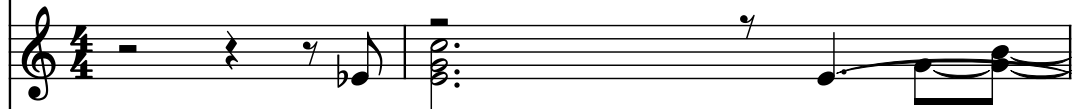
Oud



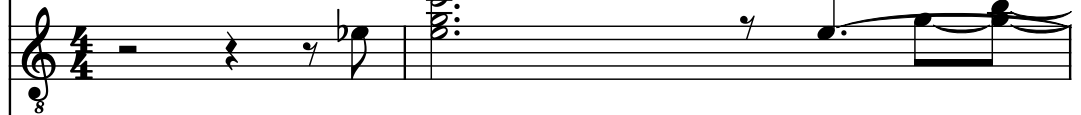
Pan Flute



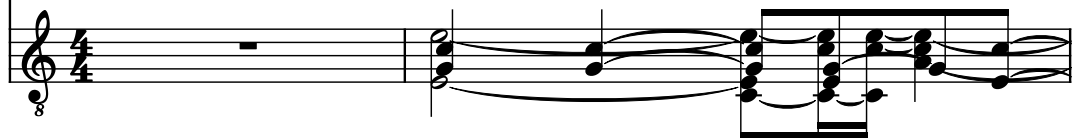
Pardessus de viole



Electric Guitar



Acoustic Guitar



Frtrl. El. B.

D. Set

Pno.

O.

Pn. Fl.

Pds. v.

El. Guit.

Guit.

8

4

Frtrl. El. B.

D. Set

Pno.

O.

Pn. Fl.

Pds. v.

El. Guit.

Guit.

3

8

Frtrl. El. B.

D. Set

Pno.

O.

Pn. Fl.

Pds. v.

El. Guit.

Guit.

The musical score for page 5 consists of eight staves. The first three staves (Frtrl. El. B., D. Set, and Pno.) contain only rests. The Oboe (O.) staff features a melodic line starting with a half note, followed by a 7-measure rest, and then a series of eighth notes. The Piano Flute (Pn. Fl.) staff contains a whole note. The Percussion (Pds. v.) and Electric Guitar (El. Guit.) staves contain sustained notes. The Guitar (Guit.) staff features a complex, multi-measure rhythmic pattern.

Frtrl. El. B.

D. Set

Pno.

O.

Pn. Fl.

Pds. v.

El. Guit.

Guit.

The musical score for page 6 consists of seven staves. The top three staves (Frtrl. El. B., D. Set, and Pno.) are mostly empty, with a few rests. The O. staff has a melodic line with a long note. The Pn. Fl. staff has a few notes. The Pds. v. and El. Guit. staves have a rhythmic pattern with triplets. The Guit. staff has a complex, multi-layered texture with many notes and rests.

Frtrl. El. B.

D. Set

Pno.

O.

Pn. Fl.

Pds. v.

El. Guit.

Guit.

The musical score for page 7 is arranged in a vertical staff format. The instruments and their parts are as follows:

- Frtrl. El. B. (Fretless Electric Bass):** Represented by a single bass line with a few notes.
- D. Set (Drum Set):** Represented by a single line with a few notes.
- Pno. (Piano):** Represented by a grand staff (treble and bass clefs) with a few notes.
- O. (Oboe):** Represented by a single treble clef staff with a few notes.
- Pn. Fl. (Piccolo Flute):** Represented by a single treble clef staff with a few notes.
- Pds. v. (Percussion):** Represented by a single treble clef staff with a few notes.
- El. Guit. (Electric Guitar):** Represented by a single treble clef staff with a few notes.
- Guit. (Guitar):** Represented by a single treble clef staff with many notes and chords.

8

Frtl. El. B.

D. Set

Pno.

O.

Pn. Fl.

Pds. v.

El. Guit.

Guit.

The musical score for page 7 begins at measure 8. The instrumentation includes Fretless Electric Bass (Frtl. El. B.), Drums (D. Set), Piano (Pno.), Oboe (O.), Piccolo Flute (Pn. Fl.), Percussion (Pds. v.), Electric Guitar (El. Guit.), and Guitar (Guit.). The Fretless Electric Bass part has a few notes at the end of the measure. The Drums part is mostly silent. The Piano part is also mostly silent. The Oboe part has a melodic line with slurs. The Piccolo Flute part is mostly silent. The Percussion part has sparse, punctuated notes. The Electric Guitar part has sparse, punctuated notes. The Guitar part features a complex, multi-measure bass line with many beamed notes and slurs.

9

Frtl. El. B.

D. Set

Pno.

O.

Pn. Fl.

Pds. v.

El. Guit.

Guit.

The musical score for page 8, starting at measure 9, features the following parts:

- Frtl. El. B.**: Bass clef, melodic line with a fermata.
- D. Set**: Single measure rest.
- Pno.**: Grand staff (treble and bass clefs), both staves have single measure rests.
- O.**: Treble clef, complex melodic line with many beamed notes.
- Pn. Fl.**: Treble clef, simple melodic line.
- Pds. v.**: Treble clef, single measure rest.
- El. Guit.**: Treble clef, single measure rest.
- Guit.**: Treble clef, complex melodic line with many beamed notes.

10

Frtl. El. B.

D. Set

Pno.

O.

Pn. Fl.

Pds. v.

El. Guit.

Guit.

The musical score for page 10, measures 10-12, is as follows:

- Measures 10-12:** The score is in 4/4 time. The key signature has one flat (B-flat).
- Frtl. El. B. (Fretless Electric Bass):** Measures 10-12. The line starts with a quarter note G2, followed by a half note F2, and ends with a quarter note E2.
- D. Set (Drum Set):** Measures 10-12. The line is mostly empty, with a single eighth note in measure 11.
- Pno. (Piano):** Measures 10-12. The line is mostly empty, with a single eighth note in measure 11.
- O. (Oboe):** Measures 10-12. The line starts with a triplet of eighth notes (G4, A4, B4) in measure 10, followed by a quarter rest in measure 11, and ends with a quarter note G4 in measure 12.
- Pn. Fl. (Piano Flute):** Measures 10-12. The line starts with a quarter note G4, followed by a half note F4, and ends with a quarter note E4.
- Pds. v. (Percussion):** Measures 10-12. The line is mostly empty, with a single eighth note in measure 11.
- El. Guit. (Electric Guitar):** Measures 10-12. The line is mostly empty, with a single eighth note in measure 11.
- Guit. (Guitar):** Measures 10-12. The line starts with a complex, fast-moving line in measure 10, followed by a more sustained line in measure 11, and ends with a quarter note G4 in measure 12.

Frtrl. El. B.

D. Set

Pno.

O.

Pn. Fl.

Pds. v.

El. Guit.

Guit.

Measure 11: Frtrl. El. B. has a half note G2, a quarter note A2, and a half note B2. D. Set has a whole rest. Pno. has a whole rest. O. has a half note G4, a quarter note A4, and a half note B4. Pn. Fl. has a half note G4, a quarter note A4, and a half note B4. Pds. v. has a whole rest. El. Guit. has a whole rest. Guit. has a half note G2, a quarter note A2, and a half note B2.

Measure 12: Frtrl. El. B. has a half note G2, a quarter note A2, and a half note B2. D. Set has a whole rest. Pno. has a whole rest. O. has a half note G4, a quarter note A4, and a half note B4. Pn. Fl. has a half note G4, a quarter note A4, and a half note B4. Pds. v. has a whole rest. El. Guit. has a whole rest. Guit. has a half note G2, a quarter note A2, and a half note B2.

Pno.

Frtrl. El. B.

D. Set

Pno.

O.

Pn. Fl.

Pds. v.

El. Guit.

Guit.

The musical score for page 13 consists of eight staves. The first staff, 'Frtrl. El. B.', is in bass clef and contains a single note followed by a long slur. The second staff, 'D. Set', is a percussion staff with a single drum hit. The third staff, 'Pno.', is a grand staff with treble and bass clefs, showing rests. The fourth staff, 'O.', is in treble clef and contains a complex melodic line with slurs and accents. The fifth staff, 'Pn. Fl.', is in treble clef and contains a melodic line with a long slur. The sixth staff, 'Pds. v.', is in treble clef and contains a single drum hit. The seventh staff, 'El. Guit.', is in treble clef and contains a single drum hit. The eighth staff, 'Guit.', is in treble clef and contains a complex melodic line with slurs and accents.

14

Frtrl. El. B.

D. Set

Pno.

O.

Pn. Fl.

Pds. v.

El. Guit.

Guit.

14

15

Frtl. El. B.

D. Set

Pno.

O.

Pn. Fl.

Pds. v.

El. Guit.

Guit.

16

16

Frtrl. El. B.

D. Set

Pno.

O.

Pn. Fl.

Pds. v.

El. Guit.

Guit.

The musical score for page 16 consists of eight staves. The first staff, 'Frtrl. El. B.', is in bass clef and contains a melodic line with a half note, a quarter note, and a dotted quarter note. The second staff, 'D. Set', is in treble clef and features a complex rhythmic pattern with many beamed sixteenth notes and rests. The third staff, 'Pno.', is a grand staff with both treble and bass clefs, showing chords and single notes. The fourth staff, 'O.', is in treble clef and contains a melodic line with a half note and a quarter note. The fifth staff, 'Pn. Fl.', is in treble clef and shows a melodic line with a half note and a quarter note. The sixth staff, 'Pds. v.', is in treble clef and contains a whole rest. The seventh staff, 'El. Guit.', is in treble clef and contains a whole rest. The eighth staff, 'Guit.', is in treble clef and features a complex rhythmic pattern with many beamed sixteenth notes and rests.

Frtrl. El. B.

D. Set

Pno.

O.

Pn. Fl.

Pds. v.

El. Guit.

Guit.

8

20

Frtrl. El. B.

D. Set

Pno.

O.

Pn. Fl.

Pds. v.

El. Guit.

Guit.

Frtrl. El. B.

D. Set

Pno.

O.

Pn. Fl.

Pds. v.

El. Guit.

Guit.

24

Frtrl. El. B.

D. Set

Pno.

O.

Pn. Fl.

Pds. v.

El. Guit.

Guit.

Frtrl. El. B.

D. Set

Pno.

O.

Pn. Fl.

Pds. v.

El. Guit.

Guit.

The musical score for page 26 consists of eight staves. The first staff, Frtrl. El. B., is in bass clef and contains two measures of music. The second staff, D. Set, is in alto clef and contains two measures of music. The third staff, Pno., is in grand staff and contains two measures of music. The fourth staff, O., is in treble clef and contains two measures of music. The fifth staff, Pn. Fl., is in treble clef and contains two measures of music. The sixth staff, Pds. v., is in treble clef and contains two measures of music. The seventh staff, El. Guit., is in treble clef and contains two measures of music. The eighth staff, Guit., is in treble clef and contains two measures of music. The El. Guit. and Guit. parts have an 8va marking below the staff.

28

Frtrl. El. B.

D. Set

Pno.

O.

Pn. Fl.

Pds. v.

El. Guit.

Guit.

5

3

Frtrl. El. B.

D. Set

Pno.

O.

Pn. Fl.

Pds. v.

El. Guit.

Guit.

3

3

32

Frtrl. El. B.

D. Set

Pno.

O.

Pn. Fl.

Pds. v.

El. Guit.

Guit.

Frtrl. El. B.

D. Set

Pno.

O.

Pn. Fl.

Pds. v.

El. Guit.

Guit.

The musical score for page 34 consists of eight staves. The first staff, Frtrl. El. B., is in bass clef and contains a sequence of eighth and quarter notes. The second staff, D. Set, is in alto clef and features a complex rhythmic pattern with many sixteenth notes and rests. The third staff, Pno., is in grand staff (treble and bass clefs) and shows whole rests for both hands. The fourth staff, O., is in treble clef and contains a melodic line with eighth notes and a triplet. The fifth staff, Pn. Fl., is in treble clef and shows a triplet of eighth notes. The sixth staff, Pds. v., is in treble clef and contains a single half note. The seventh staff, El. Guit., is in treble clef and contains a single half note. The eighth staff, Guit., is in treble clef and contains a complex rhythmic pattern with many sixteenth notes and rests.

36

Frtrl. El. B.

D. Set

Pno.

O.

Pn. Fl.

Pds. v.

El. Guit.

Guit.

Frtrl. El. B.

D. Set

Pno.

O.

Pn. Fl.

Pds. v.

El. Guit.

Guit.

The musical score for page 37 features eight staves. The Frtrl. El. B. staff begins with a bass clef and contains a half note, a quarter rest, and a half note. The D. Set staff uses a double bar line and contains a half note, a quarter rest, and a half note. The Pno. staff is marked with a grand staff and contains a whole rest. The O. staff begins with a treble clef and contains a half note, a quarter note, and a half note. The Pn. Fl. staff begins with a treble clef and contains a half note, a quarter note, and a half note. The Pds. v. staff begins with a treble clef and contains a half note, a quarter note, and a half note. The El. Guit. staff begins with a treble clef and contains a half note, a quarter note, and a half note. The Guit. staff begins with a treble clef and contains a half note, a quarter note, and a half note. The score includes various musical notations such as notes, rests, and articulation marks.

38

Frtrl. El. B.

D. Set

Pno.

O.

Pn. Fl.

Pds. v.

El. Guit.

Guit.

Frtrl. El. B.

D. Set

Pno.

O.

Pn. Fl.

Pds. v.

El. Guit.

Guit.

The musical score for page 40 consists of eight staves. The first staff, 'Frtrl. El. B.', is in bass clef and contains a few notes with a long sustain. The second staff, 'D. Set', is in alto clef and features a series of eighth notes followed by a triplet of sixteenth notes. The third staff, 'Pno.', is a grand staff with both treble and bass clefs, showing rests in both hands. The fourth staff, 'O.', is in treble clef and contains a complex melodic line with many beamed notes and slurs. The fifth staff, 'Pn. Fl.', is in treble clef and features a triplet of eighth notes. The sixth staff, 'Pds. v.', is in treble clef and contains a few notes with a long sustain. The seventh staff, 'El. Guit.', is in treble clef and contains a few notes with a long sustain. The eighth staff, 'Guit.', is in treble clef and contains a complex melodic line with many beamed notes and slurs.

41

41

Frtl. El. B.

D. Set

Pno.

O.

Pn. Fl.

Pds. v.

El. Guit.

Guit.

8

7

Detailed description: This musical score page contains measures 41 and 42. The instruments are arranged vertically: Frtl. El. B. (Bass), D. Set (Drum Set), Pno. (Piano), O. (Oboe), Pn. Fl. (Penny Flute), Pds. v. (Percussion), El. Guit. (Electric Guitar), and Guit. (Guitar). Measure 41 shows the Frtl. El. B. playing a half note, the D. Set playing a half note, the Pno. playing a half note, the O. playing a half note, the Pn. Fl. playing a half note, the Pds. v. playing a half note, the El. Guit. playing a half note, and the Guit. playing a half note. Measure 42 shows the Frtl. El. B. playing a half note, the D. Set playing a half note, the Pno. playing a half note, the O. playing a half note, the Pn. Fl. playing a half note, the Pds. v. playing a half note, the El. Guit. playing a half note, and the Guit. playing a half note. The Guit. part includes a double bar line and a repeat sign.

Frtrl. El. B.

D. Set

Pno.

O.

Pn. Fl.

Pds. v.

El. Guit.

Guit.

The musical score for page 42 consists of eight staves. The first staff, Frtrl. El. B., is in bass clef and features a long note with a slur. The second staff, D. Set, is in alto clef and contains a series of eighth notes and a triplet. The third staff, Pno., is in grand staff (treble and bass clefs) and shows a whole rest. The fourth staff, O., is in treble clef and contains a series of eighth notes and a triplet. The fifth staff, Pn. Fl., is in treble clef and features a triplet of eighth notes. The sixth staff, Pds. v., is in treble clef and contains a whole note. The seventh staff, El. Guit., is in treble clef and contains a whole note. The eighth staff, Guit., is in treble clef and contains a series of eighth notes and a triplet.

43

Frtrl. El. B.

D. Set

Pno.

O.

Pn. Fl.

Pds. v.

El. Guit.

Guit.

Frtrl. El. B.

D. Set

Pno.

O.

Pn. Fl.

Pds. v.

El. Guit.

Guit.

The musical score for page 44 features eight staves. The Frtrl. El. B. staff (bass clef) has a half note, a quarter note, and a triplet of eighth notes. The D. Set staff (percussion clef) shows a complex rhythmic pattern with various note values and rests. The Pno. staff (grand staff) includes chords and a triplet of eighth notes in the right hand. The O. staff (treble clef) has a half note, a quarter note, and a half note. The Pn. Fl. staff (treble clef) has a half note, a quarter note, and a triplet of eighth notes. The Pds. v. and El. Guit. staves are empty. The Guit. staff (treble clef) features a complex melodic line with various note values and rests.

45

Frtrl. El. B.

D. Set

Pno.

O.

Pn. Fl.

Pds. v.

El. Guit.

Guit.

The musical score for measures 45-48 features the following parts:

- Frtrl. El. B.:** Bass clef, starting with a half note G2, followed by quarter notes F2, E2, and D2.
- D. Set:** Treble clef, starting with a half note G4, followed by quarter notes F4, E4, and D4. The part includes various articulations like accents and slurs.
- Pno.:** Grand staff. The right hand plays a half note G4, followed by quarter notes F4, E4, and D4. The left hand plays a half note G2, followed by quarter notes F2, E2, and D2.
- O.:** Treble clef, starting with a half note G4, followed by quarter notes F4, E4, and D4.
- Pn. Fl.:** Treble clef, starting with a half note G4, followed by quarter notes F4, E4, and D4.
- Pds. v.:** Treble clef, starting with a half note G4, followed by quarter notes F4, E4, and D4.
- El. Guit.:** Treble clef, starting with a half note G4, followed by quarter notes F4, E4, and D4.
- Guit.:** Treble clef, starting with a half note G4, followed by quarter notes F4, E4, and D4. The part includes a double bar line with a '4' below it, indicating a change in tuning or a specific technique.

Frtrl. El. B.

D. Set

Pno.

O.

Pn. Fl.

Pds. v.

El. Guit.

Guit.

The musical score for page 46 consists of eight staves. The first staff, Frtrl. El. B., is in bass clef and contains a half note, a quarter note, and a dotted half note. The second staff, D. Set, is in alto clef and contains a series of notes with 'x' marks above them, indicating a specific technique. The third staff, Pno., is in grand staff (treble and bass clefs) and contains a half note, a quarter note, and a dotted half note. The fourth staff, O., is in treble clef and contains a half note, a quarter note, and a dotted half note. The fifth staff, Pn. Fl., is in treble clef and contains a half note, a quarter note, and a dotted half note. The sixth staff, Pds. v., is in treble clef and contains a half note, a quarter note, and a dotted half note. The seventh staff, El. Guit., is in treble clef and contains a half note, a quarter note, and a dotted half note. The eighth staff, Guit., is in treble clef and contains a half note, a quarter note, and a dotted half note.

47

Frtrl. El. B.

D. Set

Pno.

O.

Pn. Fl.

Pds. v.

El. Guit.

Guit.

The musical score for measures 47 and 48 consists of eight staves. The Frtrl. El. B. staff is in bass clef, showing a sequence of notes. The D. Set staff is in alto clef, featuring a complex rhythmic pattern with many beamed notes. The Pno. staff is in grand staff, with the right hand playing chords and the left hand playing a simple bass line. The O. staff is in treble clef, showing a sequence of notes. The Pn. Fl. staff is in treble clef, showing a sequence of notes. The Pds. v. staff is in treble clef, showing a sequence of notes. The El. Guit. staff is in treble clef, showing a sequence of notes. The Guit. staff is in treble clef, featuring a complex rhythmic pattern with a double bar line and a repeat sign.

Frtrl. El. B.

D. Set

Pno.

O.

Pn. Fl.

Pds. v.

El. Guit.

Guit.

48

50

Frtrl. El. B.

D. Set

Pno.

O.

Pn. Fl.

Pds. v.

El. Guit.

Guit.

Frtrl. El. B.

D. Set

Pno.

O.

Pn. Fl.

Pds. v.

El. Guit.

Guit.

The musical score for page 51 is written in 2/4 time and consists of two measures. The instruments and their parts are as follows:

- Frtrl. El. B.**: Bass clef. Measure 1: Quarter note G2, quarter note A2. Measure 2: Quarter note B2, quarter note C3.
- D. Set**: Alto clef. Measure 1: Eighth notes G4, A4, B4, C5, D5, E5, F5, G5. Measure 2: Eighth notes G4, A4, B4, C5, D5, E5, F5, G5.
- Pno.**: Grand staff. Measure 1: Chords G4-B4, A4-C5, B4-G4. Measure 2: Chords G4-B4, A4-C5, B4-G4.
- O.**: Soprano clef. Measure 1: Chords G4-B4, A4-C5, B4-G4. Measure 2: Chords G4-B4, A4-C5, B4-G4.
- Pn. Fl.**: Soprano clef. Measure 1: Quarter note G4, quarter note A4, quarter note B4, quarter note C5. Measure 2: Quarter note D5, quarter note E5, quarter note F5, quarter note G5.
- Pds. v.**: Soprano clef. Measure 1: Rest. Measure 2: Rest.
- El. Guit.**: Soprano clef. Measure 1: Rest. Measure 2: Rest.
- Guit.**: Soprano clef. Measure 1: Rest. Measure 2: Rest.

53

Frtrl. El. B.

D. Set

Pno.

O.

Pn. Fl.

Pds. v.

El. Guit.

Guit.

53

Frtrl. El. B.

D. Set

Pno.

O.

Pn. Fl.

Pds. v.

El. Guit.

Guit.

The musical score for page 55 consists of eight staves. The first staff, Frtrl. El. B., is in bass clef and contains a melodic line. The second staff, D. Set, is in double bar line and contains a complex rhythmic pattern. The third staff, Pno., is in grand staff and contains a melodic line. The fourth staff, O., is in treble clef and contains a melodic line. The fifth staff, Pn. Fl., is in treble clef and contains a melodic line. The sixth staff, Pds. v., is in treble clef and contains a single note. The seventh staff, El. Guit., is in treble clef and contains a single note. The eighth staff, Guit., is in treble clef and contains a single note.

57

Frtrl. El. B.

D. Set

Pno.

O.

Pn. Fl.

Pds. v.

El. Guit.

Guit.

Frtrl. El. B.

D. Set

Pno.

O.

Pn. Fl.

Pds. v.

El. Guit.

Guit.

The musical score for page 59 consists of eight staves. The first staff, 'Frtrl. El. B.', is in bass clef and contains a sequence of eighth and quarter notes. The second staff, 'D. Set', is in alto clef and features a rhythmic pattern of eighth notes with rests. The third staff, 'Pno.', is a grand staff with treble and bass clefs, showing chords and rests. The fourth staff, 'O.', is in treble clef and includes a melodic line with a slur and a triplet. The fifth staff, 'Pn. Fl.', is in treble clef and has a long note followed by a rest. The sixth staff, 'Pds. v.', is in treble clef and contains a triplet of eighth notes. The seventh staff, 'El. Guit.', is in treble clef and shows a triplet of eighth notes. The eighth staff, 'Guit.', is in treble clef and features a complex melodic line with slurs and triplets. The page number '59' is located at the top left, and the page number '42' is at the top right.

61

Frtrl. El. B.

D. Set

Pno.

O.

Pn. Fl.

Pds. v.

El. Guit.

Guit.

8

8

63

Frtl. El. B.

D. Set

Pno.

O.

Pn. Fl.

Pds. v.

El. Guit.

Guit.

The musical score for measures 63 and 64 features the following parts:

- Frtl. El. B.**: Bass clef, starting with a half note G2, followed by a half note F2, and a half note E2.
- D. Set**: Alto clef, starting with a half note G4, followed by a half note F4, and a half note E4.
- Pno.**: Grand staff, starting with a half note G4, followed by a half note F4, and a half note E4.
- O.**: Treble clef, starting with a half note G4, followed by a half note F4, and a half note E4.
- Pn. Fl.**: Treble clef, starting with a half note G4, followed by a half note F4, and a half note E4.
- Pds. v.**: Treble clef, starting with a half note G4, followed by a half note F4, and a half note E4.
- El. Guit.**: Treble clef, starting with a half note G4, followed by a half note F4, and a half note E4.
- Guit.**: Treble clef, starting with a half note G4, followed by a half note F4, and a half note E4.

64

Frtrl. El. B.

D. Set

Pno.

O.

Pn. Fl.

Pds. v.

El. Guit.

Guit.

Frtrl. El. B.

D. Set

Pno.

O.

Pn. Fl.

Pds. v.

El. Guit.

Guit.

Frtrl. El. B.

D. Set

Pno.

O.

Pn. Fl.

Pds. v.

El. Guit.

Guit.

The musical score for page 65 consists of eight staves. The first staff, 'Frtrl. El. B.', is in bass clef and contains a few notes. The second staff, 'D. Set', is in alto clef and features a complex rhythmic pattern with many 'x' marks. The third staff, 'Pno.', is in grand staff (treble and bass clefs) and shows a piano introduction with a sharp sign. The fourth staff, 'O.', is in treble clef and contains a few notes. The fifth staff, 'Pn. Fl.', is in treble clef and is mostly empty. The sixth staff, 'Pds. v.', is in treble clef and contains a few notes. The seventh staff, 'El. Guit.', is in treble clef and contains a few notes. The eighth staff, 'Guit.', is in treble clef and contains a complex rhythmic pattern with many 'x' marks.

66

Frtrl. El. B.

D. Set

Pno.

O.

Pn. Fl.

Pds. v.

El. Guit.

Guit.

Frtrl. El. B.

D. Set

Pno.

O.

Pn. Fl.

Pds. v.

El. Guit.

Guit.

8

68

Frtrl. El. B.

D. Set

Pno.

O.

Pn. Fl.

Pds. v.

El. Guit.

Guit.

This musical score page contains measures 68 through 71. The instruments and their parts are as follows:

- Frtrl. El. B. (Fretless Electric Bass):** Measures 68-71, bass clef. Notes: G2 (half), A2 (quarter), G2 (half), F#2 (quarter).
- D. Set (Drum Set):** Measures 68-71, treble clef. Includes snare, hi-hat, and kick drum patterns.
- Pno. (Piano):** Measures 68-71, grand staff. Chords and single notes in both hands.
- O. (Organ):** Measures 68-71, treble clef. Chords and single notes.
- Pn. Fl. (Piano Flute):** Measures 68-71, treble clef. Mostly rests.
- Pds. v. (Pedal Steel):** Measures 68-71, treble clef. Chords and single notes.
- El. Guit. (Electric Guitar):** Measures 68-71, treble clef. Chords and single notes.
- Guit. (Acoustic Guitar):** Measures 68-71, treble clef. Chords and single notes.

Frtrl. El. B.

D. Set

Pno.

O.

Pn. Fl.

Pds. v.

El. Guit.

Guit.

The musical score for page 69 consists of eight staves. The first staff, Frtrl. El. B., is in bass clef and contains a melodic line with eighth and quarter notes. The second staff, D. Set, is in alto clef and features a complex rhythmic pattern with many beamed eighth notes and some rests. The third staff, Pno., is a grand staff with treble and bass clefs, showing chords and moving lines. The fourth staff, O., is in treble clef and contains a melodic line with many beamed eighth notes. The fifth staff, Pn. Fl., is in treble clef and is mostly empty with a few rests. The sixth staff, Pds. v., is in treble clef and contains a few notes and rests. The seventh staff, El. Guit., is in treble clef and contains a few notes and rests. The eighth staff, Guit., is in treble clef and contains a complex rhythmic pattern with many beamed eighth notes. The score includes various musical notations such as accidentals, dynamic markings, and articulation marks.

71

Frtrl. El. B.

D. Set

Pno.

O.

Pn. Fl.

Pds. v.

El. Guit.

Guit.

Frtrl. El. B.

D. Set

Pno.

O.

Pn. Fl.

Pds. v.

El. Guit.

Guit.

The musical score for page 72 features eight staves. The Frtrl. El. B. staff is in bass clef, starting with a half note G2, followed by a quarter note A2, a half note B2, and a quarter note G2. The D. Set staff is in alto clef, starting with a half note G4, followed by a quarter note A4, a half note B4, and a quarter note G4. The Pno. staff is in grand staff, with the right hand playing a half note G4 and the left hand playing a half note G2. The O. staff is in treble clef, starting with a half note G4, followed by a quarter note A4, a half note B4, and a quarter note G4. The Pn. Fl. staff is in treble clef and is empty. The Pds. v. staff is in treble clef, starting with a half note G4, followed by a quarter note A4, a half note B4, and a quarter note G4. The El. Guit. staff is in treble clef, starting with a half note G4, followed by a quarter note A4, a half note B4, and a quarter note G4. The Guit. staff is in treble clef, starting with a half note G4, followed by a quarter note A4, a half note B4, and a quarter note G4.

73

Frtrl. El. B.

D. Set

Pno.

O.

Pn. Fl.

Pds. v.

El. Guit.

Guit.

Frtrl. El. B.

D. Set

Pno.

O.

Pn. Fl.

Pds. v.

El. Guit.

Guit.

The musical score for page 74 consists of eight staves. The Frtrl. El. B. staff is in bass clef and contains a few notes. The D. Set staff is in alto clef and features a triplet of eighth notes. The Pno. staff is in grand staff (treble and bass clefs) and contains a few notes. The O. staff is in treble clef and contains a few notes. The Pn. Fl. staff is in treble clef and contains a whole rest. The Pds. v. staff is in treble clef and contains a few notes. The El. Guit. staff is in treble clef and contains a few notes. The Guit. staff is in treble clef and contains a few notes.

75

Frtrl. El. B.

D. Set

Pno.

O.

Pn. Fl.

Pds. v.

El. Guit.

Guit.

75

Frtrl. El. B.

D. Set

Pno.

O.

Pn. Fl.

Pds. v.

El. Guit.

Guit.

The musical score for page 76 consists of eight staves. The first staff, 'Frtrl. El. B.', is in bass clef and contains a few notes. The second staff, 'D. Set', is in alto clef and features a dense, rhythmic pattern of beamed notes. The third staff, 'Pno.', is a grand staff with treble and bass clefs, showing a simple harmonic accompaniment. The fourth staff, 'O.', is in treble clef and contains a few notes. The fifth staff, 'Pn. Fl.', is in treble clef and contains a few notes. The sixth staff, 'Pds. v.', is in treble clef and contains a complex, melodic line with many beamed notes. The seventh staff, 'El. Guit.', is in treble clef and contains a complex, melodic line with many beamed notes. The eighth staff, 'Guit.', is in treble clef and contains a few notes.

Frtrl. El. B.

D. Set

Pno.

O.

Pn. Fl.

Pds. v.

El. Guit.

Guit.

Frtrl. El. B.

D. Set

Pno.

O.

Pn. Fl.

Pds. v.

El. Guit.

Guit.

8

3

3

81

Frtrl. El. B.

D. Set

Pno.

O.

Pn. Fl.

Pds. v.

El. Guit.

Guit.

The musical score for page 81 consists of eight staves. The first staff, 'Frtrl. El. B.', is in bass clef and features a triplet of eighth notes. The second staff, 'D. Set', is in alto clef and contains a few notes with rests. The third staff, 'Pno.', is a grand staff with treble and bass clefs, mostly containing rests. The fourth staff, 'O.', is in treble clef and has a complex melodic line with many beamed notes. The fifth staff, 'Pn. Fl.', is in treble clef and contains rests. The sixth staff, 'Pds. v.', is in treble clef and has a melodic line with some rests. The seventh staff, 'El. Guit.', is in treble clef and has a melodic line with some rests. The eighth staff, 'Guit.', is in treble clef and has a complex melodic line with many beamed notes. The score includes various musical notations such as triplets, slurs, and dynamic markings.

Frtrl. El. B.

D. Set

Pno.

O.

Pn. Fl.

Pds. v.

El. Guit.

Guit.

The musical score for page 83 consists of eight staves, each representing a different instrument. The staves are arranged vertically. The first staff is for 'Frtrl. El. B.' (French Horn), the second for 'D. Set' (Drum Set), the third for 'Pno.' (Piano), the fourth for 'O.' (Oboe), the fifth for 'Pn. Fl.' (Penny Flute), the sixth for 'Pds. v.' (Percussion), the seventh for 'El. Guit.' (Electric Guitar), and the eighth for 'Guit.' (Acoustic Guitar). The score shows a progression of notes and rests across the staves, with a final double bar line at the end of each staff. The 'Pds. v.' and 'El. Guit.' staves have a 'P.' (Percussion) symbol above them. The 'Guit.' staff has a 'G.' (Guitar) symbol above it. The 'Pno.' staff has a 'P.' (Piano) symbol above it. The 'O.' staff has an 'O.' (Oboe) symbol above it. The 'Pn. Fl.' staff has a 'P.' (Penny Flute) symbol above it. The 'D. Set' staff has a 'D.' (Drum Set) symbol above it. The 'Frtrl. El. B.' staff has a 'F.' (French Horn) symbol above it.