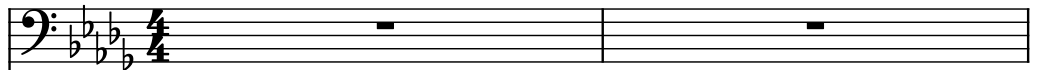
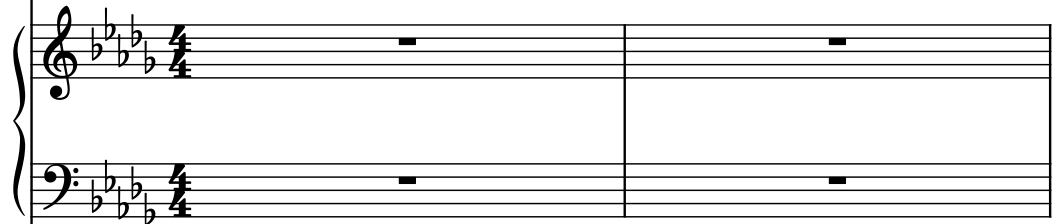


♩ = 127

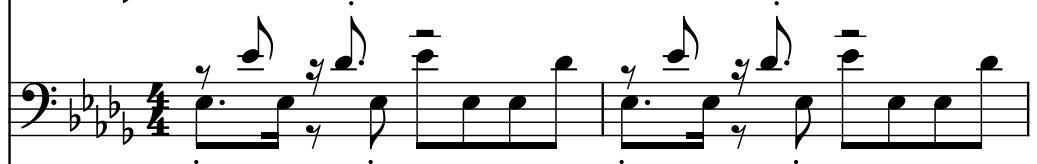
Bass Guitar, bass2



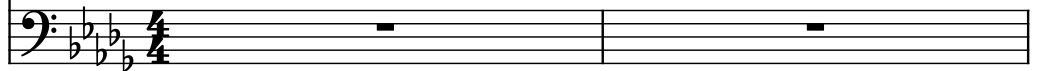
Saw Synthesizer, chords



Electric Bass, bass1

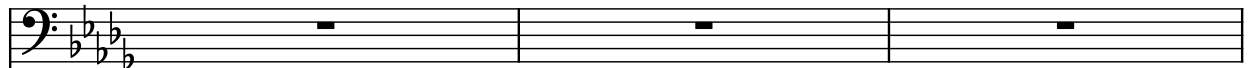


Square Synthesizer, lead

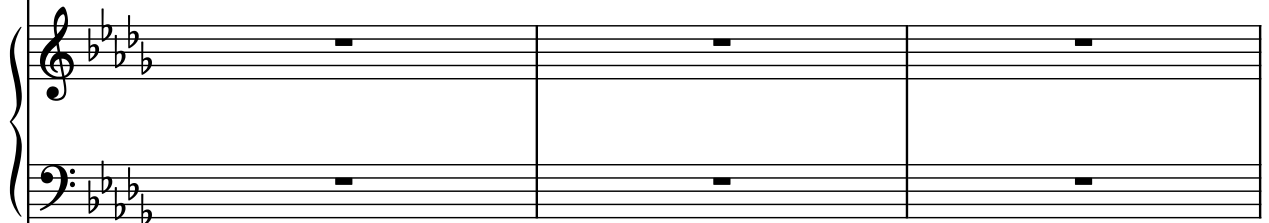


3

B. Guit.



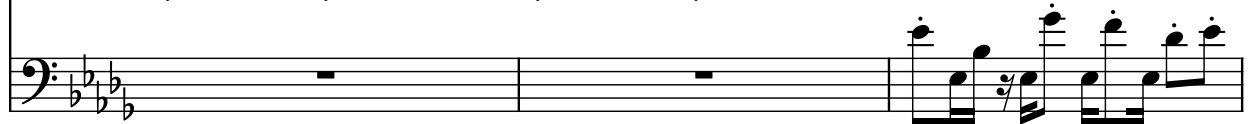
Synth.



El. B.



Synth.



6

B. Guit.

Synth.

El. B.

Synth.

Measures 6, 7, and 8 of the musical score. The B. Guit. part has whole rests. The Synth. part (piano) has whole rests. The El. B. part has whole rests. The Synth. part (bass) has a melodic line in measures 6, 7, and 8, consisting of eighth and quarter notes with slurs and ties.

9

B. Guit.

Synth.

El. B.

Synth.

Measures 9 and 10 of the musical score. The B. Guit. part has whole rests. The Synth. part (piano) has whole rests. The El. B. part has whole rests. The Synth. part (bass) has a melodic line in measures 9 and 10, consisting of eighth and quarter notes with slurs and ties.

11

B. Guit.

Synth.

El. B.

Synth.

14

B. Guit.

Synth.

El. B.

Synth.

16

B. Guit.

Synth.

El. B.

Synth.

Detailed description of the musical score: The score is for measures 16 through 19. The key signature is three flats (B-flat major/D minor). The B. Guit. staff uses a bass clef and contains triplet eighth notes in measures 16, 17, and 18, followed by a quarter rest in measure 19. The Synth. section consists of two staves. The top Synth. staff uses a treble clef and contains quarter rests, dotted quarter notes, and quarter rests in measures 16, 17, 18, and 19. The bottom Synth. staff uses a treble clef and contains quarter rests, dotted quarter notes, and quarter rests in measures 16, 17, 18, and 19. The El. B. staff uses a bass clef and contains a quarter rest in measure 16, followed by a quarter rest in measure 17, a quarter rest in measure 18, and a quarter rest in measure 19. The Synth. staff at the bottom uses a bass clef and contains a quarter rest in measure 16, followed by a quarter rest in measure 17, a quarter rest in measure 18, and a quarter rest in measure 19.