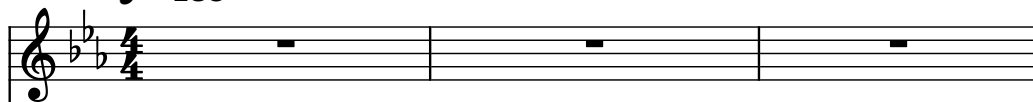


♩ = 135

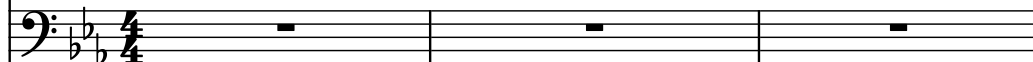
Square Synthesizer, Keys



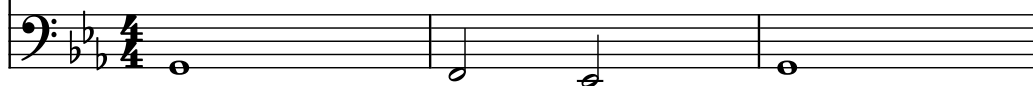
Saw Synthesizer, Lead



Effect Synthesizer, bass

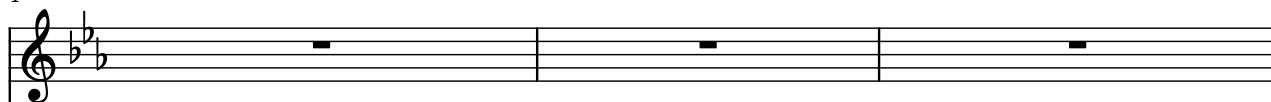


Pad Synthesizer, bass 2



4

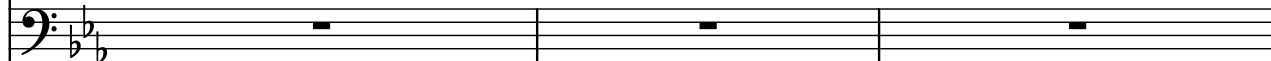
Synth.



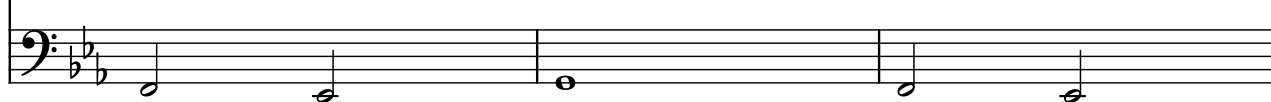
Synth.



Synth.

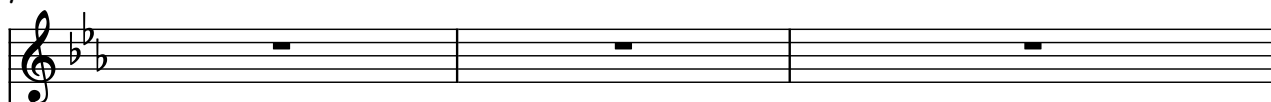


Synth.



7

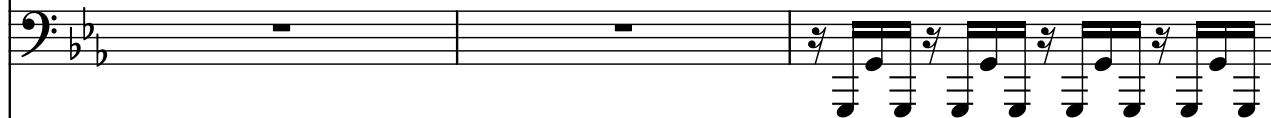
Synth.



Synth.



Synth.



Synth.



10

Synth.

Synth.

Synth.

Synth.



This system contains measures 10 and 11. It features four staves, each labeled 'Synth.' on the left. The key signature has two flats (B-flat and E-flat). The first staff (top) is a treble clef with whole rests in both measures. The second staff is a treble clef with a melodic line: measure 10 has a quarter note B-flat, a quarter note A-flat, a quarter note G, and a quarter note F; measure 11 has a quarter note E, a quarter note D, a quarter note C, and a quarter note B-flat. The third staff is a bass clef with a continuous eighth-note pattern: measure 10 has notes G, F, E, D, C, B, A, G; measure 11 has notes F, E, D, C, B, A, G, F. The fourth staff is a bass clef with whole rests in both measures.

12

Synth.

Synth.

Synth.

Synth.



This system contains measures 12 and 13. It features four staves, each labeled 'Synth.' on the left. The key signature has two flats (B-flat and E-flat). The first staff (top) is a treble clef with whole rests in both measures. The second staff is a treble clef with a melodic line: measure 12 has a quarter note B-flat, a quarter note A-flat, a quarter note G, and a quarter note F; measure 13 has a quarter note E, a quarter note D, a quarter note C, and a quarter note B-flat. The third staff is a bass clef with a continuous eighth-note pattern: measure 12 has notes G, F, E, D, C, B, A, G; measure 13 has notes F, E, D, C, B, A, G, F. The fourth staff is a bass clef with whole rests in both measures.

14

Synth.

Synth.

Synth.

Synth.



This system contains measures 14 and 15. It features four staves, each labeled 'Synth.' on the left. The key signature has two flats (B-flat and E-flat). The first staff (top) is a treble clef with whole rests in both measures. The second staff is a treble clef with a melodic line: measure 14 has a quarter note B-flat, a quarter note A-flat, a quarter note G, and a quarter note F; measure 15 has a quarter note E, a quarter note D, a quarter note C, and a quarter note B-flat. The third staff is a bass clef with a continuous eighth-note pattern: measure 14 has notes G, F, E, D, C, B, A, G; measure 15 has notes F, E, D, C, B, A, G, F. The fourth staff is a bass clef with whole rests in both measures.

16

Synth.

Synth.

Synth.

Synth.

18

Synth.

Synth.

Synth.

Synth.

Synth.

20

Synth.

Synth.

Synth.

Synth.

Synth.

22

Synth.

Synth.

Synth.

Synth.

24

Synth.

Synth.

Synth.

Synth.

Synth.