

♩ = 150



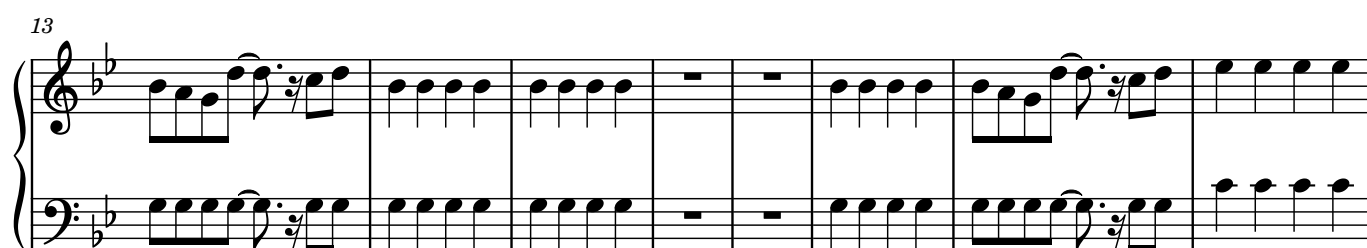
First system of a piano score in B-flat major, 4/4 time. The tempo is marked as quarter note = 150. The system contains six measures. The right hand starts with a half rest, then plays eighth-note patterns. The left hand plays a steady eighth-note accompaniment.

7



Second system of the piano score, measures 7-12. The right hand continues with eighth-note patterns and some chords. The left hand maintains the eighth-note accompaniment.

13



Third system of the piano score, measures 13-18. Measures 13-14 show a change in the right hand's melody. Measures 15-16 have whole rests in both hands. Measures 17-18 resume the eighth-note accompaniment.

21



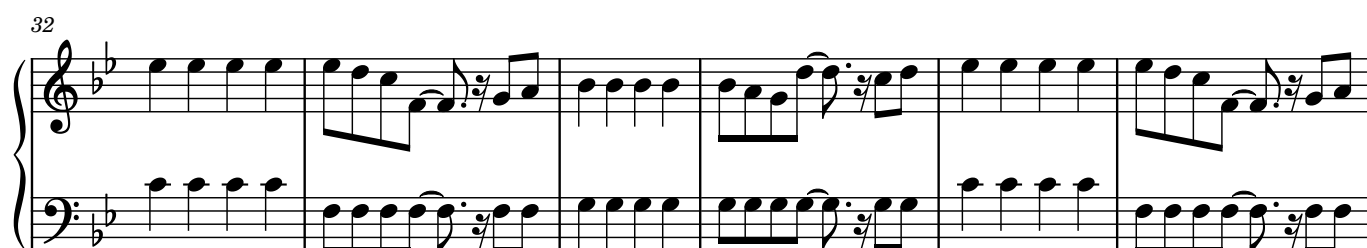
Fourth system of the piano score, measures 21-26. The right hand features a mix of eighth-note runs and chords. The left hand continues with the eighth-note accompaniment.

27



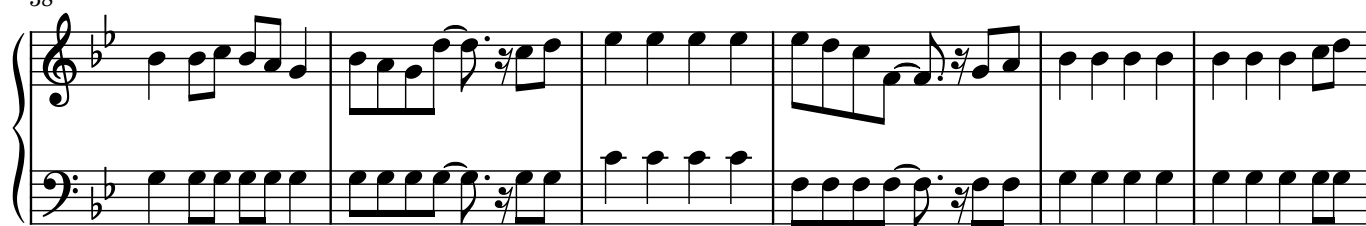
Fifth system of the piano score, measures 27-31. The right hand has a descending eighth-note scale in measure 27, followed by other patterns. The left hand continues with the eighth-note accompaniment.

32

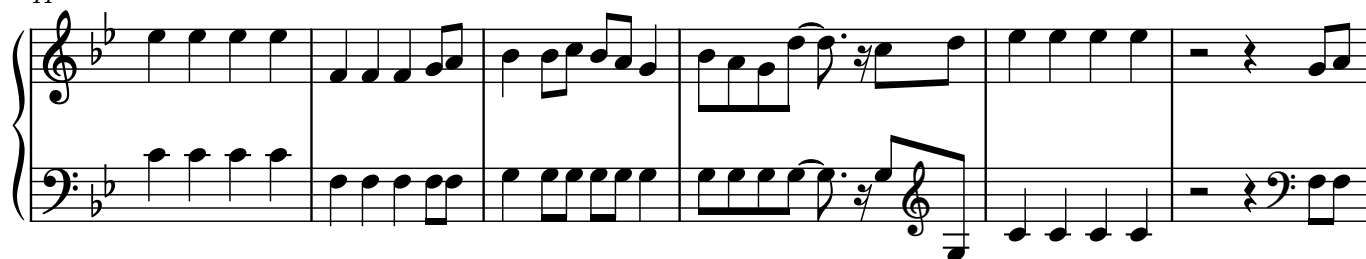


Sixth system of the piano score, measures 32-37. The right hand plays a series of eighth-note chords and patterns. The left hand continues with the eighth-note accompaniment.

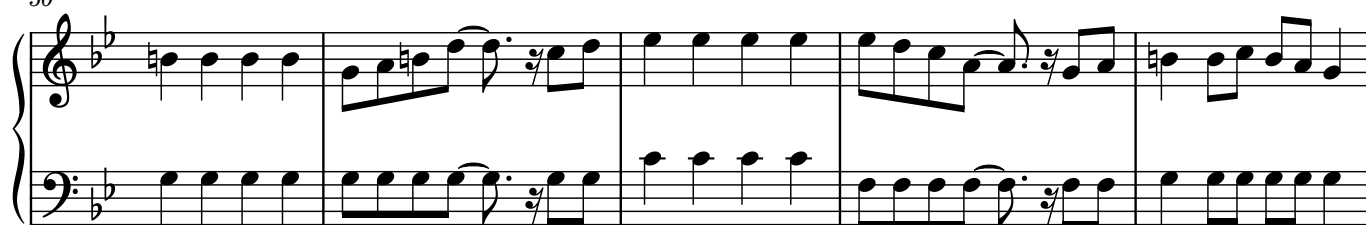
38



44



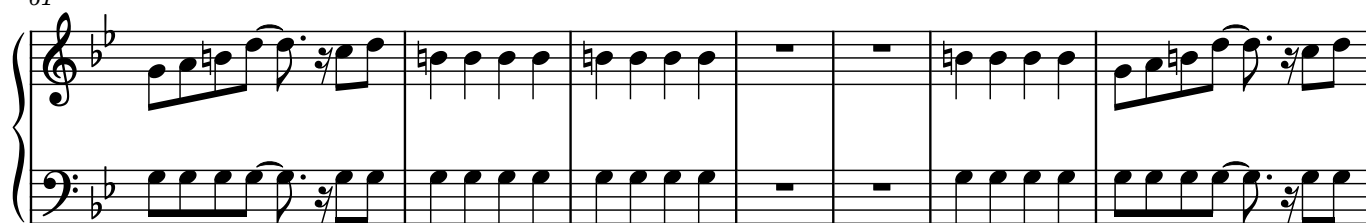
50



55



61



68



