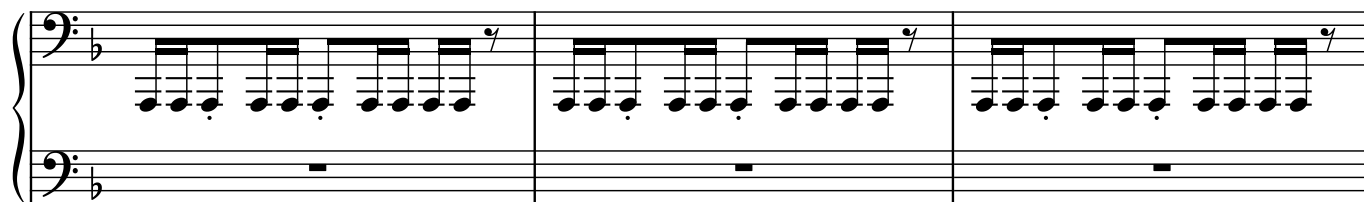
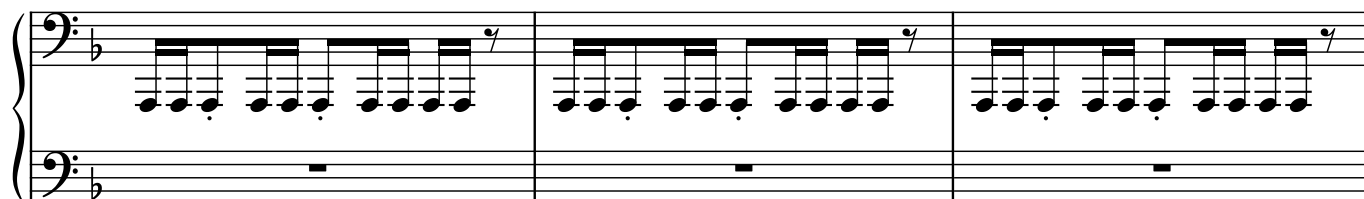


2

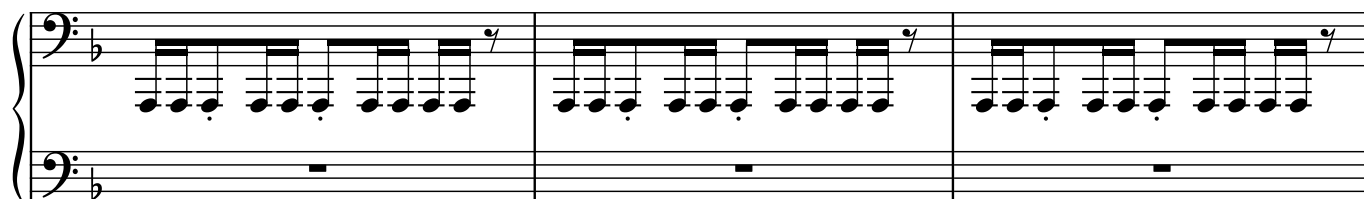
32



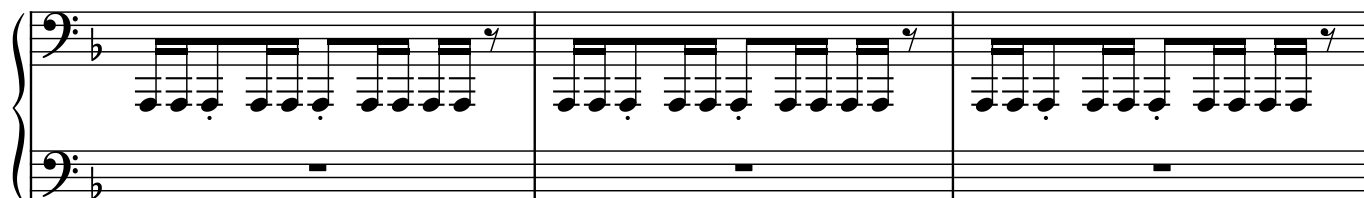
35



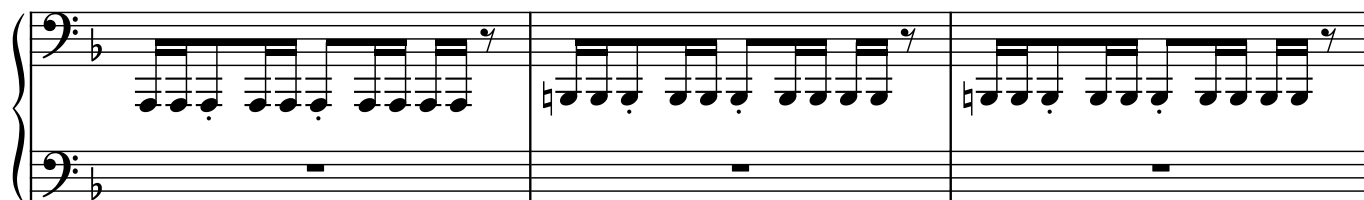
38



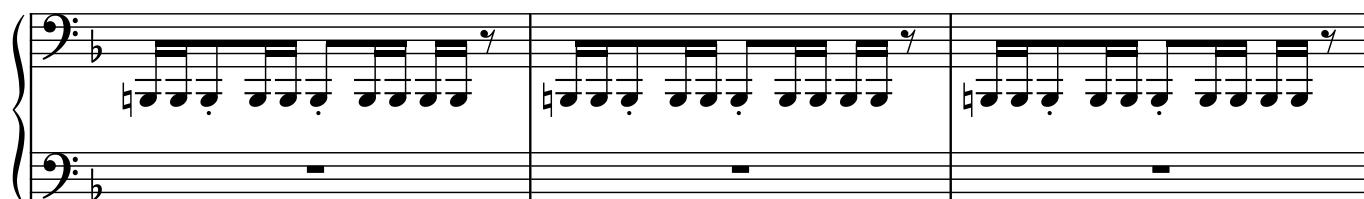
41



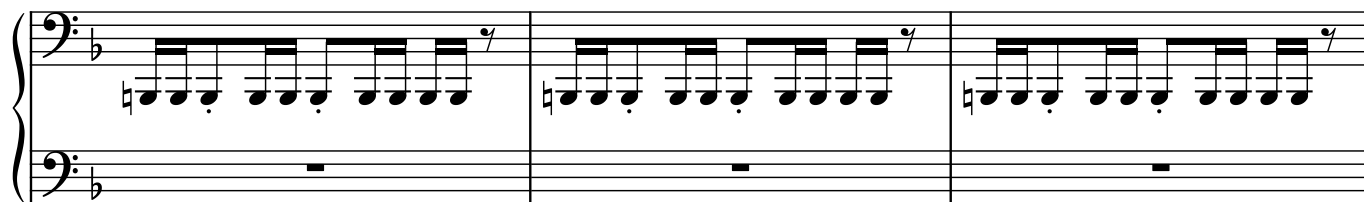
44



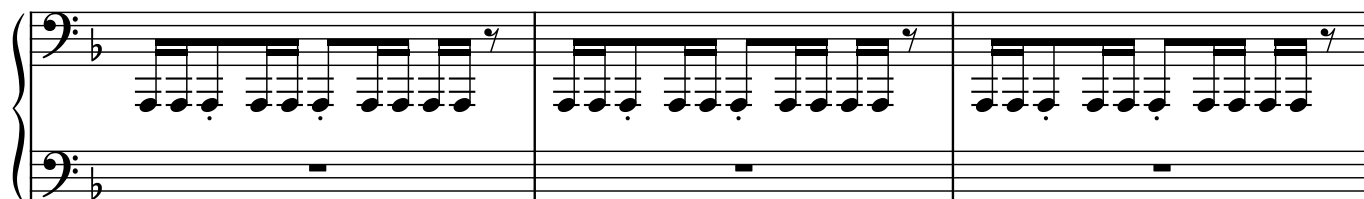
47



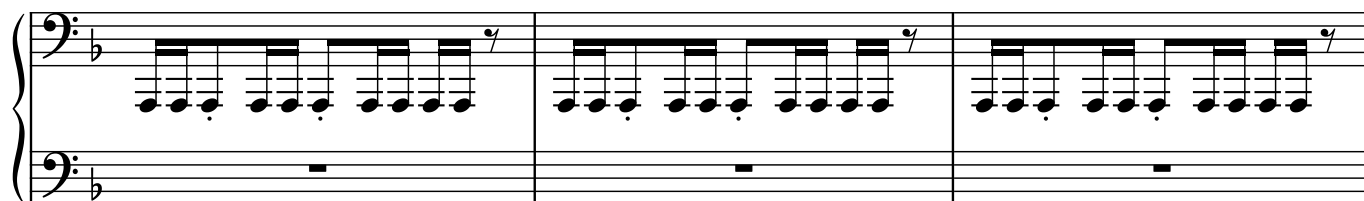
50



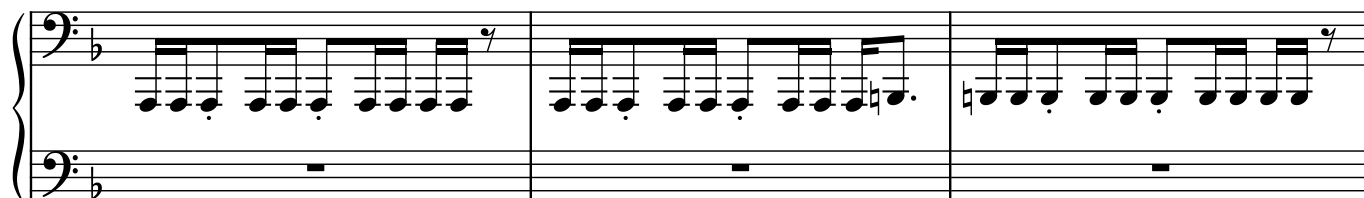
53



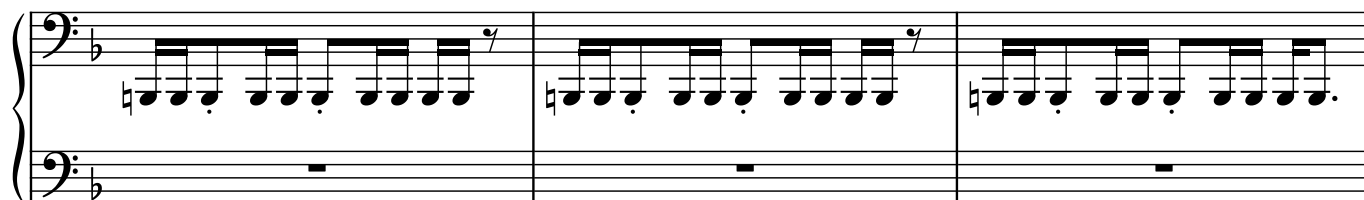
56



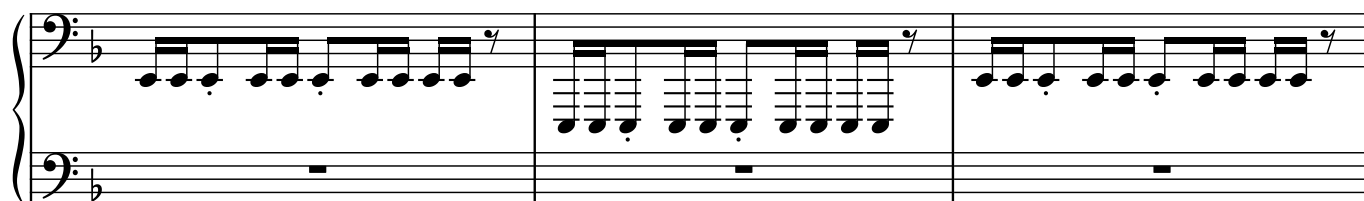
59



62



65




The image shows a musical score for the song "The Rose Tree". It is written for a piano, with a grand staff consisting of two staves. The key signature is one flat (B-flat), and the time signature is 15/8. The music is in common time (C). The melody is played in the right hand, and the accompaniment is in the left hand. The melody consists of a series of eighth and sixteenth notes, with a final measure containing a whole note and a fermata. The accompaniment consists of a steady eighth-note pattern in the left hand. The score is labeled with the title "The Rose Tree" and the number "15" in the bottom right corner.

69

15/8

7

70



70

[illegible]