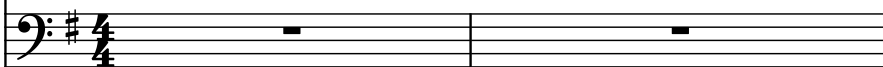


♩ = 112

Acoustic Guitar, JAZZ GTR



Bass Synthesizer, SYNTH BASS



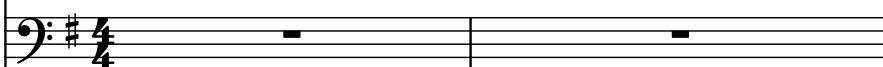
Brass, BRASS



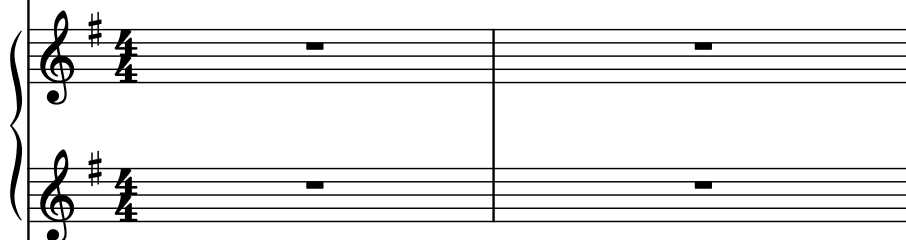
Violins, STRINGS



Trombone, TROMBONE



Electric Piano, E.PIANO



Violins, STRINGS



Winds, FLUTE



Drumset, DRUMS



Baroque Trumpet in Eb, TRUMPET



Effect Synthesizer, ICE RAIN



C Tin Whistle, WHISTLE



Voice, OHH'S



Electric Piano, E.PIANO



3

Guit.

Synth.

Br.

Vlns.

Tbn.

El. Pno.

Vlns.

Wi.

D. Set

Bq. Tpt. Eb

Synth.

C Tin Wh.

Vo.

Downloaded from www.midcities.com

4

Guit.

Synth.

Br.

Vlms.

Tbn.

El. Pno.

Vlms.

Wi.

D. Set

Bq. Tpt. Eb

Synth.

C Tin Wh.

Vo.

3

6

Guit.

Synth.

Br.

Vlms.

Tbn.

El. Pno.

Vlms.

Wi.

D. Set

Bq. Tpt. Eb

Synth.

C Tin Wh.

Vo.

3

Pdf downloaded from www.midicities.com

9

Guit.

Synth.

Br.

Vlms.

Tbn.

El. Pno.

Vlms.

Wi.

D. Set

Bq. Tpt. Eb

Synth.

C Tin Wh.

Vo.

Measures 9 and 10 of the musical score. The key signature is one sharp (F#). The time signature is 4/4. The score includes staves for Guitar, Synth, Brass, Violins, Trombone, Electric Piano, Woodwinds, Drums, Baritone Trumpet, Synthesizer, C Tin Whistle, and Voice. Measure 9 features a guitar solo with a triplet and a synth line. Measure 10 continues the guitar solo and synth line, with other instruments providing harmonic support.

11

Guit.

Synth.

Br.

Vlms.

Tbn.

El. Pno.

Vlms.

Wi.

D. Set

Bq. Tpt. Eb

Synth.

C Tin Wh.

Vo.

El. Pno.

Pdf downloaded from www.midicities.com

15

Guit.

Synth.

Br.

Vlns.

Tbn.

El. Pno.

Vlns.

Wi.

D. Set

Bq. Tpt. Eb

Synth.

C Tin Wh.

Vo.

El. Pno.

Downloaded from www.midcities.com

17

Guit.

Synth.

Br.

Vlins.

Tbn.

El. Pno.

Vlins.

Wi.

D. Set

Bq. Tpt. Eb

Synth.

C Tin Wh.

Vo.

El. Pno.

Downloaded from www.midcities.com

19

Guit.

Synth.

Br.

Vlins.

Tbn.

El. Pno.

Vlins.

Wi.

D. Set

Bq. Tpt. Eb

Synth.

C Tin Wh.

Vo.

21

Guit.

Synth.

Br.

Vlms.

Tbn.

El. Pno.

Vlms.

Wi.

D. Set

Bq. Tpt. Eb

Synth.

C Tin Wh.

Vo.

8

3

3

3

22

Guit.

Synth.

Br.

Vlins.

Tbn.

El. Pno.

Vlins.

Wi.

D. Set

Bq. Tpt. Eb

Synth.

C Tin Wh.

Vo.

8

3

3

5

Pdf downloaded from www.nidicities.com

26

Guit.

Synth.

Br.

Vlms.

Tbn.

El. Pno.

Vlms.

Wi.

D. Set

Bq. Tpt. Eb

Synth.

C Tin Wh.

Vo.

El. Pno.

Pdf downloaded from www.midicities.com

30

Guit.

Synth.

Br.

Vlns.

Tbn.

El. Pno.

Vlns.

Wi.

D. Set

Bq. Tpt. Eb

Synth.

C Tin Wh.

Vo.

El. Pno.

Downloaded from www.midcities.com

32

Guit.

Synth.

Br.

Vlms.

Tbn.

El. Pno.

Vlms.

Wi.

D. Set

Bq. Tpt. Eb

Synth.

C Tin Wh.

Vo.

El. Pno.

33

34

The musical score for measures 34-37 is arranged in a multi-staff format. The instruments and their parts are as follows:

- Guit.:** Treble clef, key of D major. Measure 34 has a whole rest. Measure 35 has a whole rest. Measure 36 has a whole rest. Measure 37 has a whole rest.
- Synth.:** Bass clef, key of D major. Measure 34 has a whole rest. Measure 35 has a whole rest. Measure 36 has a whole rest. Measure 37 has a whole rest.
- Br.:** Treble clef, key of D major. Measure 34 has a whole rest. Measure 35 has a whole rest. Measure 36 has a whole rest. Measure 37 has a whole rest.
- Vlins.:** Treble clef, key of D major. Measure 34 has a whole rest. Measure 35 has a whole rest. Measure 36 has a whole rest. Measure 37 has a whole rest.
- Tbn.:** Bass clef, key of D major. Measure 34 has a whole rest. Measure 35 has a whole rest. Measure 36 has a whole rest. Measure 37 has a whole rest.
- El. Pno.:** Grand staff (treble and bass clefs), key of D major. Measure 34 has a whole rest. Measure 35 has a whole rest. Measure 36 has a whole rest. Measure 37 has a whole rest.
- Vlins.:** Treble clef, key of D major. Measure 34 has a whole rest. Measure 35 has a whole rest. Measure 36 has a whole rest. Measure 37 has a whole rest.
- Wi.:** Treble clef, key of D major. Measure 34 has a whole rest. Measure 35 has a whole rest. Measure 36 has a whole rest. Measure 37 has a whole rest.
- D. Set:** Percussion staff. Measure 34 has a whole rest. Measure 35 has a whole rest. Measure 36 has a whole rest. Measure 37 has a whole rest.
- Bq. Tpt. Eb:** Treble clef, key of D major. Measure 34 has a whole rest. Measure 35 has a whole rest. Measure 36 has a whole rest. Measure 37 has a whole rest.
- Synth.:** Treble clef, key of D major. Measure 34 has a whole rest. Measure 35 has a whole rest. Measure 36 has a whole rest. Measure 37 has a whole rest.
- C Tin Wh.:** Treble clef, key of D major. Measure 34 has a whole rest. Measure 35 has a whole rest. Measure 36 has a whole rest. Measure 37 has a whole rest.
- Vo.:** Treble clef, key of D major. Measure 34 has a whole rest. Measure 35 has a whole rest. Measure 36 has a whole rest. Measure 37 has a whole rest.

35

Guit.

Synth.

Br.

Vlns.

Tbn.

El. Pno.

Vlns.

Wi.

D. Set

Bq. Tpt. Eb

Synth.

C Tin Wh.

Vo.

8

3

3

3

8

36

Guit.

Synth.

Br.

Vlins.

Tbn.

El. Pno.

Vlins.

Wi.

D. Set

Bq. Tpt. Eb

Synth.

C Tin Wh.

Vo.

38

Guit.

Synth.

Br.

Vlms.

Tbn.

3

El. Pno.

Vlms.

Wi.

D. Set

Bq. Tpt. Eb

Synth.

C Tin Wh.

Vo.

3

40

Guit.

Synth.

Br.

Vlins.

Tbn.

El. Pno.

Vlins.

Wi.

D. Set

Bq. Tpt. Eb

Synth.

C Tin Wh.

Vo.

42

Guit.

Synth.

Br.

Vlins.

Tbn.

El. Pno.

Vlins.

Wi.

D. Set

Bq. Tpt. Eb

Synth.

C Tin Wh.

Vo.

44

44

Guit.

Synth.

Br.

Vlins.

Tbn.

El. Pno.

Vlins.

Wi.

D. Set

Bq. Tpt. Eb

Synth.

C Tin Wh.

Vo.

Downloaded from www.midiocities.com

Pdf downloaded from www.midicities.com

48

Guit.

Synth.

Br.

Vlins.

Tbn.

El. Pno.

Vlins.

Wi.

D. Set

Bq. Tpt. Eb

Synth.

C Tin Wh.

Vo.

Fl. P.

50

Guit.

Synth.

Br.

Vlms.

Tbn.

El. Pno.

Vlms.

Wi.

D. Set

Bq. Tpt. Eb

Synth.

C Tin Wh.

Vo.

51

Guit.

Synth.

Br.

Vlms.

Tbn.

El. Pno.

Vlms.

Wi.

D. Set

Bq. Tpt. Eb

Synth.

C Tin Wh.

Vo.

El. Pno.

8

Bb

52

Guit.

Synth.

Br.

Vlms.

Tbn.

El. Pno.

Vlms.

Wi.

D. Set

Bq. Tpt. Eb

Synth.

C Tin Wh.

Vo.

8

3

3

5

8

53

Guit.

Synth.

Br.

Vlins.

Tbn.

3

El. Pno.

Vlins.

Wi.

D. Set

Bq. Tpt. Eb

Synth.

C Tin Wh.

Vo.

3

3

3

Pdf downloaded from www.midicities.com

56

Guit.

Synth.

Br.

Vlns.

Tbn.

El. Pno.

Vlns.

Wi.

D. Set

Bq. Tpt. Eb

Synth.

C Tin Wh.

Vo.

El. Pno.

Downloaded from www.midcities.com

57

Guit.

Synth.

Br.

Vlms.

Tbn.

El. Pno.

Vlms.

Wi.

D. Set

Bq. Tpt. Eb

Synth.

C Tin Wh.

Vo.

El. Pno.

58

59

59

Guit.

Synth.

Br.

Vlms.

Tbn.

El. Pno.

Vlms.

Wi.

D. Set

Bq. Tpt. Eb

Synth.

C Tin Wh.

Vo.

El. Pno.

Downloaded from www.midcities.com

Pdf downloaded from www.midicities.com

61

Guit.

Synth.

Br.

Vlns.

Tbn.

El. Pno.

Vlns.

Wi.

D. Set

Bq. Tpt. Eb

Synth.

C Tin Wh.

Vo.

Downloaded from www.musidicities.com

62

Guit.

Synth.

Br.

Vlins.

Tbn.

El. Pno.

Vlins.

Wi.

D. Set

Bq. Tpt. Eb

Synth.

C Tin Wh.

Vo.

64

Guit. 


Synth. 

Br. 

Vlns. 

Tbn. 

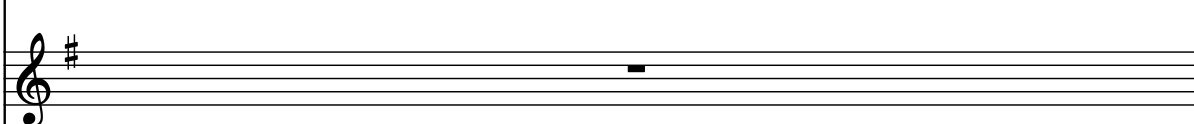
El. Pno. 

Vlns. 

Wi. 

D. Set 

Bq. Tpt. Eb 

Synth. 

C Tin Wh. 

Vo. 



65

Guit.

Synth.

Br.

Vlins.

Tbn.

El. Pno.

Vlins.

Wi.

D. Set

Bq. Tpt. Eb

Synth.

C Tin Wh.

Vo.

8

3

3

5

8

67

Guit.

Synth.

Br.

Vlms.

Tbn.

3

El. Pno.

Vlms.

Wi.

D. Set

Bq. Tpt. Eb

Synth.

C Tin Wh.

Vo.

Downloaded from www.midi-cities.com

Pdf downloaded from www.midcities.com

71

71

Guit.

Synth.

Br.

Vlins.

Tbn.

El. Pno.

Vlins.

Wi.

D. Set

Bq. Tpt. Eb

Synth.

C Tin Wh.

Vo.

Downloaded from www.mididicties.com

Pdf downloaded from www.midcities.com

75

75

Guit.

Synth.

Br.

Vlins.

Tbn.

El. Pno.

Vlins.

Wi.

D. Set

Bq. Tpt. Eb

Synth.

C Tin Wh.

Vo.

Downloaded from www.reidickies.com

Pdf downloaded from www.midcities.com

80

Guit.

Synth.

Br.

Vlns.

Tbn.

El. Pno.

Vlns.

Wi.

D. Set

Bq. Tpt. Eb

Synth.

C Tin Wh.

Vo.

El. Pno.

Downloaded from www.midcities.com

82

Guit.

Synth.

Br.

Vlms.

Tbn.

El. Pno.

Vlms.

Wi.

D. Set

Bq. Tpt. Eb

Synth.

C Tin Wh.

Vo.

El. Pno.

83

84

Guit.

Synth.

Br.

Vlins.

Tbn.

El. Pno.

Vlins.

Wi.

D. Set

Bq. Tpt. Eb

Synth.

C Tin Wh.

Vo.

El. Pno.

Downloaded from www.mididicties.com

86

Guit.

Synth.

Br.

Vlms.

Tbn.

El. Pno.

Vlms.

Wi.

D. Set

Bq. Tpt. Eb

Synth.

C Tin Wh.

Vo.

87

88

The musical score for measures 88-91 is written for a large ensemble. The key signature is one sharp (F#) and the time signature is 4/4. The instruments and their parts are as follows:

- Guit.**: Treble clef, F# key signature. Measure 88 has a whole rest. Measure 89 has a whole rest. Measure 90 has a whole rest. Measure 91 has a whole rest.
- Synth.**: Bass clef, F# key signature. Measure 88 has a whole rest. Measure 89 has a whole rest. Measure 90 has a whole rest. Measure 91 has a whole rest.
- Br.**: Treble clef, F# key signature. Measure 88 has a whole rest. Measure 89 has a whole rest. Measure 90 has a whole rest. Measure 91 has a whole rest.
- Vlns.**: Treble clef, F# key signature. Measure 88 has a whole rest. Measure 89 has a whole rest. Measure 90 has a whole rest. Measure 91 has a whole rest.
- Tbn.**: Bass clef, F# key signature. Measure 88 has a whole rest. Measure 89 has a whole rest. Measure 90 has a whole rest. Measure 91 has a whole rest.
- El. Pno.**: Grand staff, F# key signature. Measure 88 has a whole rest. Measure 89 has a whole rest. Measure 90 has a whole rest. Measure 91 has a whole rest.
- Vlns.**: Treble clef, F# key signature. Measure 88 has a whole rest. Measure 89 has a whole rest. Measure 90 has a whole rest. Measure 91 has a whole rest.
- Wi.**: Treble clef, F# key signature. Measure 88 has a whole rest. Measure 89 has a whole rest. Measure 90 has a whole rest. Measure 91 has a whole rest.
- D. Set**: Drum set notation. Measure 88 has a whole rest. Measure 89 has a whole rest. Measure 90 has a whole rest. Measure 91 has a whole rest.
- Bq. Tpt. Eb**: Treble clef, F# key signature. Measure 88 has a whole rest. Measure 89 has a whole rest. Measure 90 has a whole rest. Measure 91 has a whole rest.
- Synth.**: Treble clef, F# key signature. Measure 88 has a whole rest. Measure 89 has a whole rest. Measure 90 has a whole rest. Measure 91 has a whole rest.
- C Tin Wh.**: Treble clef, F# key signature. Measure 88 has a whole rest. Measure 89 has a whole rest. Measure 90 has a whole rest. Measure 91 has a whole rest.
- Vo.**: Treble clef, F# key signature. Measure 88 has a whole rest. Measure 89 has a whole rest. Measure 90 has a whole rest. Measure 91 has a whole rest.

89

Guit.

Synth.

Br.

Vlms.

Tbn.

El. Pno.

Vlms.

Wi.

D. Set

Bq. Tpt. Eb

Synth.

C Tin Wh.

Vo.

Downloaded from www.midicities.com

90

Guit.

Synth.

Br.

Vlns.

Tbn.

El. Pno.

Vlns.

Wi.

D. Set

Bq. Tpt. Eb

Synth.

C Tin Wh.

Vo.

Downloaded from www.mididicties.com

91

Guit.

Synth.

Br.

Vlms.

Tbn.

El. Pno.

Vlms.

Wi.

D. Set

Bq. Tpt. Eb

Synth.

C Tin Wh.

Vo.

92

Guit.

Synth.

Br.

Vlns.

Tbn.

El. Pno.

Vlns.

Wi.

D. Set

Bq. Tpt. Eb

Synth.

C Tin Wh.

Vo.

Downloaded from www.midicities.com

93

Guit.

Synth.

Br.

Vlins.

Tbn.

El. Pno.

Vlins.

Wi.

D. Set

Bq. Tpt. Eb

Synth.

C Tin Wh.

Vo.

94

Guit.

Synth.

Br.

Vlms.

Tbn.

El. Pno.

Vlms.

Wi.

D. Set

Bq. Tpt. E \flat

Synth.

C Tin Wh.

Vo.

8

3

3

95

Guit.

Synth.

Br.

Vlms.

Tbn.

El. Pno.

Vlms.

Wi.

D. Set

Bq. Tpt. Eb

Synth.

C Tin Wh.

Vo.

96

97

98

99

100

96

Guit.

Synth.

Br.

Vlms.

Tbn.

El. Pno.

Vlms.

Wi.

D. Set

Bq. Tpt. Eb

Synth.

C Tin Wh.

Vo.

97

98

99

97

Guit.

Synth.

Br.

Vlns.

Tbn.

El. Pno.

Vlns.

Wi.

D. Set

Bq. Tpt. Eb

Synth.

C Tin Wh.

Vo.

8

3

3

8

98

Guit.

Synth.

Br.

Vlins.

Tbn.

El. Pno.

Vlins.

Wi.

D. Set

Bq. Tpt. Eb

Synth.

C Tin Wh.

Vo.

99

Guit.

Synth.

Br.

Vlms.

Tbn.

El. Pno.

Vlms.

Wi.

D. Set

Bq. Tpt. Eb

Synth.

C Tin Wh.

Vo.

8

3

3

8

100

Guit.

Synth.

Br.

Vlms.

Tbn.

El. Pno.

Vlms.

Wi.

D. Set

Bq. Tpt. Eb

Synth.

C Tin Wh.

Vo.

Downloaded from www.midcities.com

101

Guit.

Synth.

Br.

Vlms.

Tbn.

El. Pno.

Vlms.

Wi.

D. Set

Bq. Tpt. Eb

Synth.

C Tin Wh.

Vo.

102

Guit.

Synth.

Br.

Vlms.

Tbn.

El. Pno.

Vlms.

Wi.

D. Set

Bq. Tpt. Eb

Synth.

C Tin Wh.

Vo.

8

3

3

8

103

Guit.

Synth.

Br.

Vlins.

Tbn.

El. Pno.

Vlins.

Wi.

D. Set

Bq. Tpt. Eb

Synth.

C Tin Wh.

Vo.

104

Guit.

Synth.

Br.

Vlins.

Tbn.

El. Pno.

Vlins.

Wi.

D. Set

Bq. Tpt. Eb

Synth.

C Tin Wh.

Vo.

106

Guit.

Synth.

Br.

Vlins.

Tbn.

El. Pno.

Vlins.

Wi.

D. Set

Bq. Tpt. Eb

Synth.

C Tin Wh.

Vo.

107

Guit.

Synth.

Br.

Vlins.

Tbn.

El. Pno.

Vlins.

Wi.

D. Set

Bq. Tpt. Eb

Synth.

C Tin Wh.

Vo.

8

5

3

8

108

Guit.

Synth.

Br.

Vlms.

Tbn.

El. Pno.

Vlms.

Wi.

D. Set

Bq. Tpt. Eb

Synth.

C Tin Wh.

Vo.

Measures 108-111 are shown. The key signature is one sharp (F#). The guitar part features a melodic line with eighth and sixteenth notes. The synth part has a low, sustained line. The electric piano part has a melodic line with eighth notes. The woodwinds part has a melodic line with eighth notes. The drums part has a rhythmic pattern with eighth notes. The baritone trumpet, synth, C tin whistle, and voice parts are currently silent.

109

Guit.

Synth.

Br.

Vlns.

Tbn.

El. Pno.

Vlns.

Wi.

D. Set

Bq. Tpt. E \flat

Synth.

C Tin Wh.

Vo.

72

110

Guit.

Synth.

Br.

Vlns.

Tbn.

El. Pno.

Vlns.

Wi.

D. Set

Bq. Tpt. Eb

Synth.

C Tin Wh.

Vo.

Downloaded from www.midicities.com

111

Guit.

Synth.

Br.

Vlms.

Tbn.

El. Pno.

Vlms.

Wi.

D. Set

Bq. Tpt. Eb

Synth.

C Tin Wh.

Vo.

Downloaded from www.midcities.com

112

Guit.

Synth.

Br.

Vlins.

Tbn.

El. Pno.

Vlins.

Wi.

D. Set

Bq. Tpt. Eb

Synth.

C Tin Wh.

Vo.

Downloaded from www.midicities.com

113

Guit.

Synth.

Br.

Vlms.

Tbn.

El. Pno.

Vlms.

Wi.

D. Set

Bq. Tpt. Eb

Synth.

C Tin Wh.

Vo.

8

3

8

3

114

Guit.

Synth.

Br.

Vlns.

Tbn.

El. Pno.

Vlns.

Wi.

D. Set

Bq. Tpt. Eb

Synth.

C Tin Wh.

Vo.

Downloaded from www.midcities.com

116

Guit.

Synth.

Br.

Vlins.

Tbn.

El. Pno.

Vlins.

Wi.

D. Set

Bq. Tpt. Eb

Synth.

C Tin Wh.

Vo.

117

Guit. 

Synth. 


Br. 

Vlms. 


Tbn. 

El. Pno. 

Vlms. 

Wi. 

D. Set 

Bq. Tpt. Eb 

Synth. 

C Tin Wh. 

Vo. 



118

Guit.

Synth.

Br.

Vlins.

Tbn.

El. Pno.

Vlins.

Wi.

D. Set

Bq. Tpt. Eb

Synth.

C Tin Wh.

Vo.

Downloaded from www.musidicities.com

80

119

Guit.

Synth.

Br.

Vlns.

Tbn.

El. Pno.

Vlns.

Wi.

D. Set

Bq. Tpt. Eb

Synth.

C Tin Wh.

Vo.

Downloaded from www.midcities.com

120

Guit.

Synth.

Br.

Vlms.

Tbn.

El. Pno.

Vlms.

Wi.

D. Set

Bq. Tpt. Eb

Synth.

C Tin Wh.

Vo.

81

7

3

3

82

121

Guit.

Synth.

Br.

Vlins.

Tbn.

El. Pno.

Vlins.

Wi.

D. Set

Bq. Tpt. Eb

Synth.

C Tin Wh.

Vo.

Downloaded from www.midicities.com

122

Guit.

Synth.

Br.

Vlins.

Tbn.

El. Pno.

Vlins.

Wi.

D. Set

Bq. Tpt. Eb

Synth.

C Tin Wh.

Vo.

123

Guit.

Synth.

Br.

Vlns.

Tbn.

El. Pno.

Vlns.

Wi.

D. Set

Bq. Tpt. Eb

Synth.

C Tin Wh.

Vo.

124

Guit.

Synth.

Br.

Vlins.

Tbn.

El. Pno.

Vlins.

Wi.

D. Set

Bq. Tpt. Eb

Synth.

C Tin Wh.

Vo.

5

125

Guit.

Synth.

Br.

Vlins.

Tbn.

El. Pno.

Vlins.

Wi.

D. Set

Bq. Tpt. Eb

Synth.

C Tin Wh.

Vo.

Downloaded from www.midcities.com

127

Guit.

Synth.

Br.

Vlins.

Tbn.

El. Pno.

Vlins.

Wi.

D. Set

Bq. Tpt. Eb

Synth.

C Tin Wh.

Vo.

128

Guit.

Synth.

Br.

Vlms.

Tbn.

El. Pno.

Vlms.

Wi.

D. Set

Bq. Tpt. Eb

Synth.

C Tin Wh.

Vo.

Downloaded from www.midicities.com

129

Guit.

Synth.

Br.

Vlns.

Tbn.

El. Pno.

Vlns.

Wi.

D. Set

Bq. Tpt. Eb

Synth.

C Tin Wh.

Vo.

Downloaded from www.midicities.com

130

Guit.

Synth.

Br.

Vlins.

Tbn.

El. Pno.

Vlins.

Wi.

D. Set

Bq. Tpt. Eb

Synth.

C Tin Wh.

Vo.

8

5

3

3

3

131

Guit.

Synth.

Br.

Vlms.

Tbn.

El. Pno.

Vlms.

Wi.

D. Set

Bq. Tpt. Eb

Synth.

C Tin Wh.

Vo.

8

9

3

132

Guit.

Synth.

Br.

Vlms.

Tbn.

El. Pno.

Vlms.

Wi.

D. Set

Bq. Tpt. Eb

Synth.

C Tin Wh.

Vo.

8

5

8

133

Guit.

Synth.

Br.

Vlms.

Tbn.

El. Pno.

Vlms.

Wi.

D. Set

Bq. Tpt. Eb

Synth.

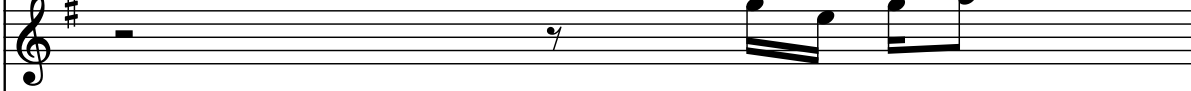
C Tin Wh.

Vo.

134


Guit. 

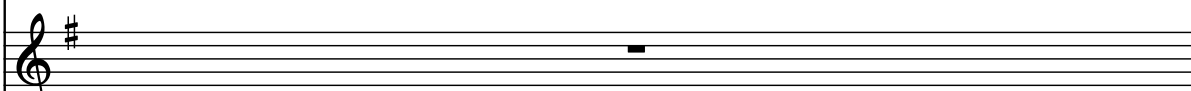
Synth. 


Br. 

Vlms. 

Tbn. 

El. Pno. 

Vlms. 

Wi. 

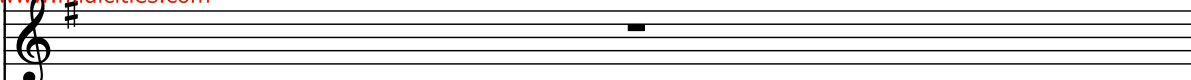
D. Set 

Bq. Tpt. Eb 

Synth. 

C Tin Wh. 

Vo. 



135

Guit.

Synth.

Br.

Vlins.

Tbn.

El. Pno.

Vlins.

Wi.

D. Set

Bq. Tpt. Eb

Synth.

C Tin Wh.

Vo.

137

Guit.

Synth.

Br.

Vlins.

Tbn.

El. Pno.

Vlins.

Wi.

D. Set

Bq. Tpt. Eb

Synth.

C Tin Wh.

Vo.

El. Pno.