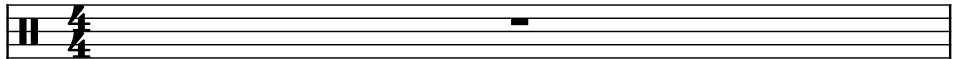
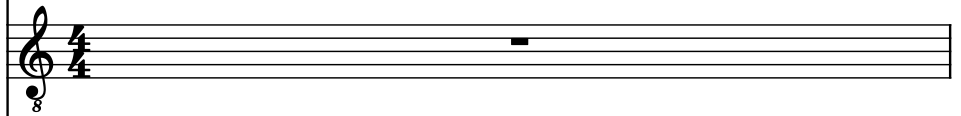


♩ = 60

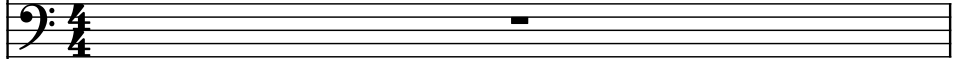
Drumset, Drums



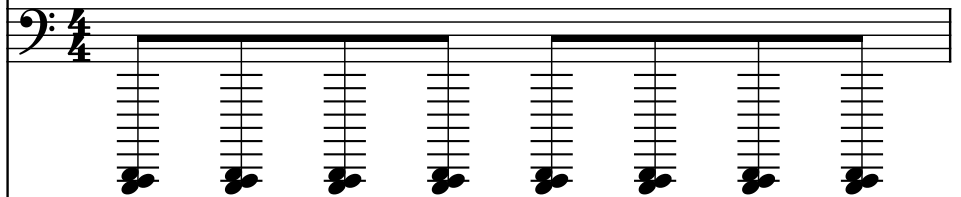
Acoustic Guitar, Acoustic Guitar



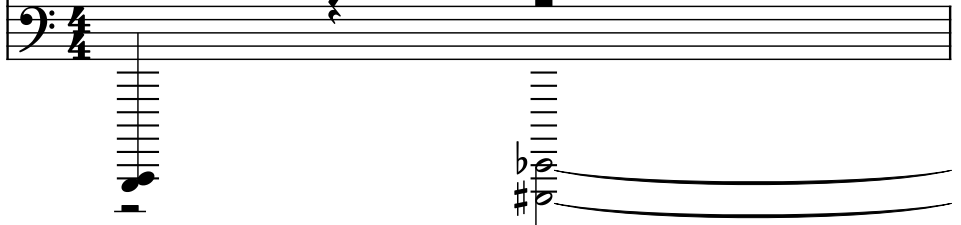
Electric Bass, Bass Guitar



Brass, Toilet Flush 1

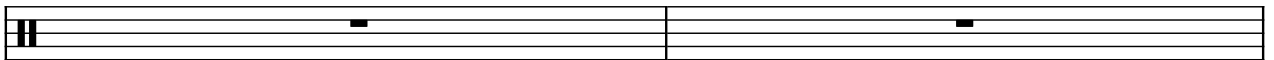


Bass Trombone, Toilet Flush 2

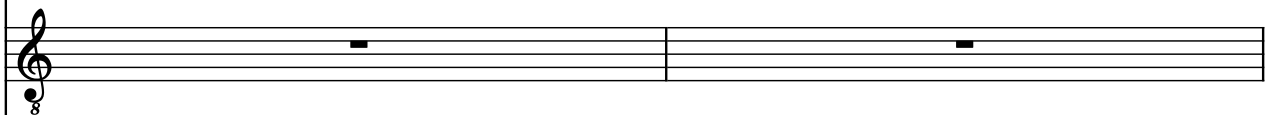


2

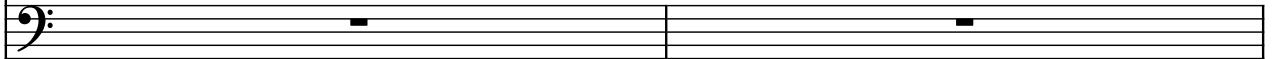
D. Set



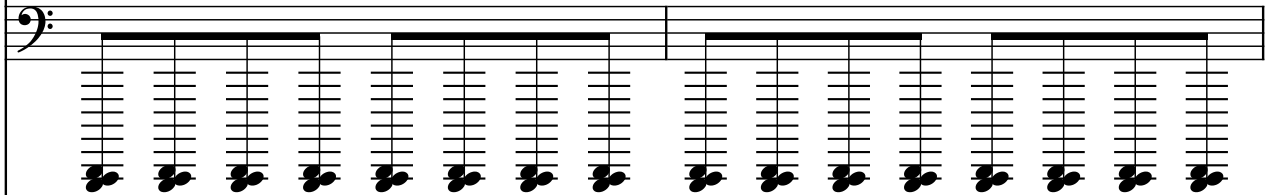
Guit.



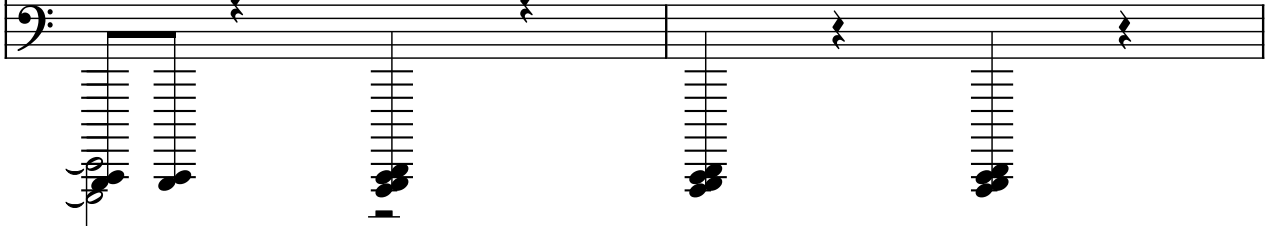
El. B.



Br.



B. Tbn.



4

D. Set

Guit.

El. B.

Br.

B. Tbn.

Measure 4: D. Set, Guit., and El. B. have whole rests. Br. has a continuous line of notes. B. Tbn. has a rest.

Measure 5: D. Set, Guit., and El. B. have whole rests. Br. has a continuous line of notes. B. Tbn. has a line of notes.

6

D. Set

Guit.

El. B.

Br.

B. Tbn.

Measure 6: D. Set, Guit., and El. B. have whole rests. Br. has a continuous line of notes. B. Tbn. has a line of notes.

Measure 7: D. Set, Guit., and El. B. have whole rests. Br. has a continuous line of notes. B. Tbn. has a line of notes.

10

12

D. Set

Guit.

El. B.

Br.

B. Tbn.

14

D. Set

Guit.

El. B.

Br.

B. Tbn.

17

16

16

D. Set

Guit.

El. B.

Br.

B. Tbn.

18

18

D. Set

Guit.

El. B.

Br.

B. Tbn.

D. Set

Guit.

El. B.

Br.

B. Tbn.

22

D. Set

Guit.

El. B.

Br.

B. Tbn.

24

24

D. Set

Guit.

El. B.

Br.

B. Tbn.

26

26

D. Set

Guit.

El. B.

Br.

B. Tbn.

28

D. Set

Guit.

El. B.

Br.

B. Tbn.

30

28

29

30

D. Set

Guit.

El. B.

Br.

B. Tbn.

31

32

33

32

D. Set

Guit.

El. B.

Br.

B. Tbn.

Measures 32-33. The guitar part (Guit.) is in 7/8 time and features a complex rhythmic pattern with triplets and slurs. The other instruments (D. Set, El. B., Br., B. Tbn.) are marked with rests.

34

D. Set

Guit.

El. B.

Br.

B. Tbn.

Measures 34-35. The guitar part (Guit.) continues with a complex rhythmic pattern, including triplets and slurs. The other instruments (D. Set, El. B., Br., B. Tbn.) are marked with rests.

35

D. Set

Guit.

El. B.

Br.

B. Tbn.

36

D. Set

Guit.

El. B.

Br.

B. Tbn.

37

D. Set

Guit.

El. B.

Br.

B. Tbn.

Measure 37: D. Set (complex rhythmic pattern), Guit. (single note), El. B. (melodic line with quintuplet), Br. (silent), B. Tbn. (silent).

Measure 38: D. Set (complex rhythmic pattern), Guit. (long sustain), El. B. (melodic line with triplet), Br. (silent), B. Tbn. (silent).

38

D. Set

Guit.

El. B.

Br.

B. Tbn.

Measure 37: D. Set (complex rhythmic pattern), Guit. (single note), El. B. (melodic line with quintuplet), Br. (silent), B. Tbn. (silent).

Measure 38: D. Set (complex rhythmic pattern), Guit. (long sustain), El. B. (melodic line with triplet), Br. (silent), B. Tbn. (silent).

39

D. Set

Guit.

El. B.

Br.

B. Tbn.

Measure 39: D. Set (8th notes), Guit. (sustained note), El. B. (8th notes), Br. (empty), B. Tbn. (empty).

Measure 40: D. Set (8th notes), Guit. (sustained note), El. B. (8th notes), Br. (empty), B. Tbn. (empty).

40

D. Set

Guit.

El. B.

Br.

B. Tbn.

Measure 40: D. Set (8th notes), Guit. (sustained note), El. B. (8th notes), Br. (empty), B. Tbn. (empty).

Measure 41: D. Set (8th notes), Guit. (sustained note), El. B. (8th notes), Br. (empty), B. Tbn. (empty).

41

D. Set

Guit.

El. B.

Br.

B. Tbn.

42

D. Set

Guit.

El. B.

Br.

B. Tbn.

43

D. Set

Guit.

El. B.

Br.

B. Tbn.

Measure 43: D. Set (complex rhythmic pattern), Guit. (sustain), El. B. (5-measure rest, then triplet), Br. (rest), B. Tbn. (rest).

44

D. Set

Guit.

El. B.

Br.

B. Tbn.

Measure 44: D. Set (complex rhythmic pattern), Guit. (sustain), El. B. (5-measure rest, then triplet), Br. (rest), B. Tbn. (rest).

45

D. Set

Guit.

El. B.

Br.

B. Tbn.

8

5

3

46

D. Set

Guit.

El. B.

Br.

B. Tbn.

8

5

3

47

D. Set

Guit.

El. B.

Br.

B. Tbn.

48

D. Set

Guit.

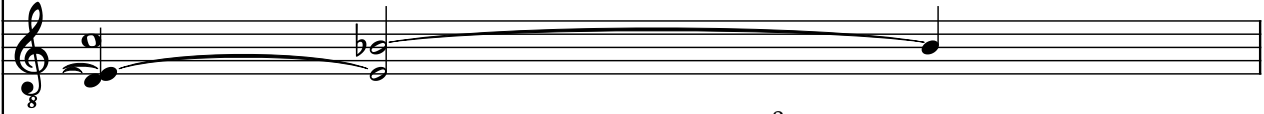
El. B.


Br.

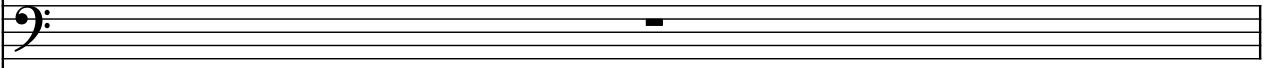
B. Tbn.

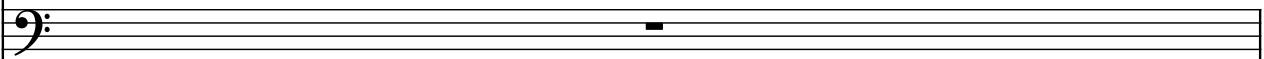
49 17

D. Set 

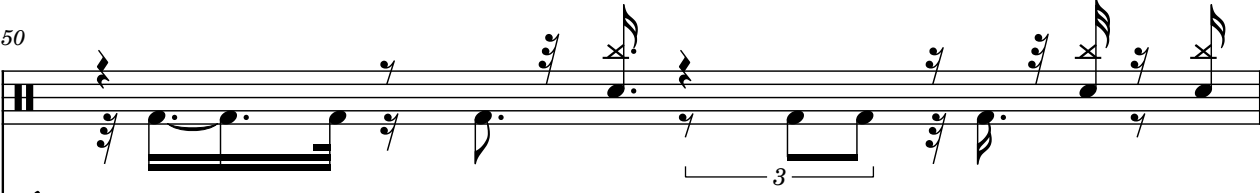
Guit. 


El. B. 


Br. 

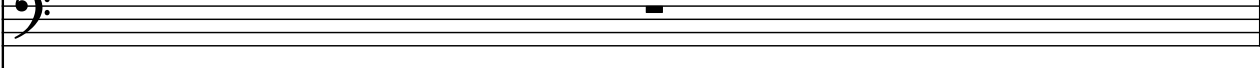
B. Tbn. 

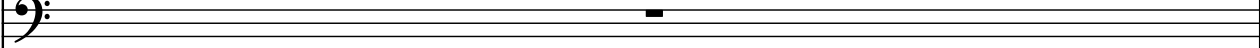
50

D. Set 

Guit. 

El. B. 

Br. 

B. Tbn. 

51

D. Set

Guit.

El. B.

Br.

B. Tbn.

52

D. Set

Guit.

El. B.

Br.

B. Tbn.

53

D. Set

Guit.

El. B.

Br.

B. Tbn.

The musical score for measures 53-55 is as follows:

- Measure 53:** D. Set plays a complex rhythmic pattern of eighth and sixteenth notes. Guit. plays a melodic line starting with an eighth note, followed by a quarter note, and then a half note.
- Measure 54:** D. Set plays a sustained note. Guit., El. B., Br., and B. Tbn. all play sustained notes.
- Measure 55:** D. Set plays a sustained note. Guit., El. B., Br., and B. Tbn. all play sustained notes.