

♩ = 126

Flute, Melody



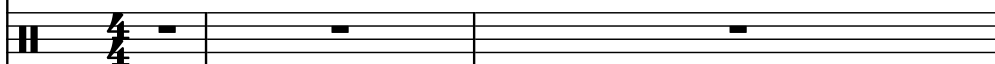
Electric Piano, Piano



Electric Bass, Bass



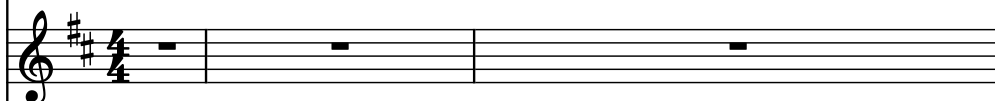
Drumset, Drums



String Synthesizer, Strings



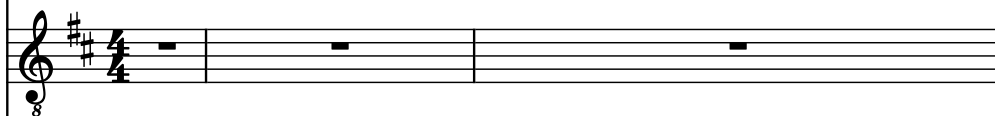
Strings, Strings 2



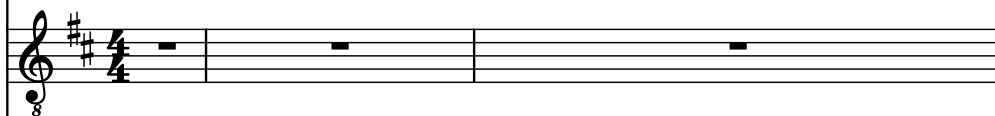
Soprano, Choir



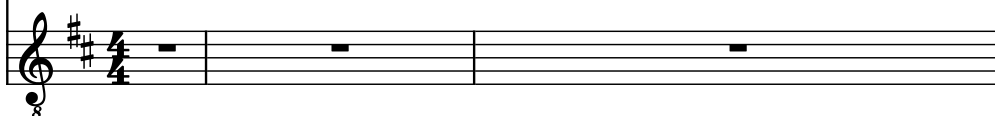
Electric Guitar, Guitar



Electric Guitar, Guitar Lead



Electric Guitar, Lead



4

Fl.

El. Pno.

El. B.

D. Set

Synth.

St.

S.

El. Guit.

El. Guit.

El. Guit.

5

Fl.

El. Pno.

El. B.

D. Set

Synth.

St.

S.

El. Guit.

El. Guit.

El. Guit.

6

Fl.

El. Pno.

El. B.

D. Set

Synth.

St.

S.

El. Guit.

El. Guit.

El. Guit.

7

Fl.

El. Pno.

El. B.

D. Set

Synth.

St.

S.

El. Guit.

El. Guit.

El. Guit.

10

Fl.

El. Pno.

El. B.

D. Set

Synth.

St.

S.

El. Guit.

El. Guit.

El. Guit.

13

Fl.

El. Pno.

El. B.

D. Set

Synth.

St.

S.

El. Guit.

El. Guit.

El. Guit.

15

Fl.

El. Pno.

El. B.

D. Set

Synth.

St.

S.

El. Guit.

El. Guit.

El. Guit.

17

Fl.

El. Pno.

El. B.

D. Set

Synth.

St.

S.

El. Guit.

El. Guit.

El. Guit.

19

Fl.

El. Pno.

El. B.

D. Set

Synth.

St.

S.

El. Guit.

El. Guit.

El. Guit.

21

Fl.

El. Pno.

El. B.

D. Set

Synth.

St.

S.

El. Guit.

El. Guit.

El. Guit.

Detailed description: This musical score page contains measures 21 and 22. The key signature has two sharps (F# and C#). The Flute (Fl.) part in measure 21 has a half note F#4, a quarter note G#4, a quarter note A4, and a half note B4. In measure 22, it has a half note C#5 and a whole rest. The Electric Piano (El. Pno.) part has a half note F#4 in measure 21, and in measure 22, it has a half note G#4, a half note A4, and a half note B4, with a triplet of eighth notes (C#5, D5, E5) in the final measure. The Electric Bass (El. B.) part has a half note F#3 in measure 21, and in measure 22, it has a half note G#3, a half note A3, and a half note B3, with a triplet of eighth notes (C#4, D4, E4) in the final measure. The Drums (D. Set) part has a half note F#4 in measure 21, and in measure 22, it has a half note G#4, a half note A4, and a half note B4, with a triplet of eighth notes (C#5, D5, E5) in the final measure. The Synthesizer (Synth.) part has a half note F#4 in measure 21, and in measure 22, it has a half note G#4, a half note A4, and a half note B4, with a triplet of eighth notes (C#5, D5, E5) in the final measure. The Strings (St.) and Saxophone (S.) parts have whole rests in both measures. The three Electric Guitar (El. Guit.) parts have whole rests in both measures. The score includes various musical notations such as treble and bass clefs, key signatures, notes, rests, and triplets.

23

Fl.

El. Pno.

El. B.

D. Set

Synth.

St.

S.

El. Guit.

El. Guit.

El. Guit.

25

Fl.

El. Pno.

El. B.

D. Set

Synth.

St.

S.

El. Guit.

El. Guit.

El. Guit.

Detailed description: This musical score page contains measures 25 and 26. The key signature has two sharps (F# and C#). The Flute (Fl.) part in measure 25 consists of eighth notes: F#4, G#4, A4, B4, C#5, followed by a quarter rest in measure 26. The Electric Piano (El. Pno.) part features a complex texture with triplets of eighth notes in the right hand and a steady eighth-note bass line in the left hand. The Electric Bass (El. B.) part has a consistent eighth-note bass line with triplets in measures 25 and 26. The Drum Set (D. Set) part shows a pattern of eighth notes with accents, including a triplet in measure 26. The Synth part has a simple eighth-note pattern with triplets. The Strings (St.) part has a single half note in measure 25 and a whole note in measure 26. The Saxophone (S.) part is silent. The first Electric Guitar (El. Guit.) part is silent. The second Electric Guitar (El. Guit.) part is silent in measure 25 and plays a triplet of eighth notes in measure 26. The third Electric Guitar (El. Guit.) part is silent.

27

Fl.

El. Pno.

El. B.

D. Set

Synth.

St.

S.

El. Guit.

El. Guit.

El. Guit.

28

Fl.

El. Pno.

El. B.

D. Set

Synth.

St.

S.

El. Guit.

El. Guit.

El. Guit.

30

Fl.

El. Pno.

El. B.

D. Set

Synth.

St.

S.

El. Guit.

El. Guit.

El. Guit.

33

Fl.

El. Pno.

El. B.

D. Set

Synth.

St.

S.

El. Guit.

El. Guit.

El. Guit.

35

The musical score for measures 35 and 36 is arranged for the following instruments:

- Fl. (Flute):** Treble clef, key of D major. Measure 35 has a quarter rest followed by a triplet of eighth notes (D4, E4, F#4). Measure 36 has a quarter rest followed by a triplet of eighth notes (G4, A4, B4).
- El. Pno. (Electric Piano):** Treble clef, key of D major. Measure 35 has a half-note chord (D4, F#4, A4) tied to a half-note chord (E4, G4, B4) in measure 36. A triplet of eighth notes (D4, E4, F#4) is marked in measure 35.
- El. B. (Electric Bass):** Bass clef, key of D major. Measure 35 has a triplet of eighth notes (D3, E3, F#3). Measure 36 has a triplet of eighth notes (G3, A3, B3).
- D. Set (Drums):** Standard drum notation. Measure 35 has a snare drum hit on the second beat. Measure 36 has a snare drum hit on the second beat and a triplet of eighth notes (D4, E4, F#4) on the third beat.
- Synth. (Synthesizer):** Treble clef, key of D major. Measure 35 has a half-note chord (D4, F#4, A4) tied to a half-note chord (E4, G4, B4) in measure 36.
- St. (Saxophone):** Treble clef, key of D major. Measure 35 has a half-note chord (D4, F#4, A4) tied to a half-note chord (E4, G4, B4) in measure 36. A triplet of eighth notes (D4, E4, F#4) is marked in measure 35.
- S. (Soprano Saxophone):** Treble clef, key of D major. Measure 35 has a half-note chord (D4, F#4, A4) tied to a half-note chord (E4, G4, B4) in measure 36.
- El. Guit. (Electric Guitars):** Three staves, all in treble clef, key of D major. Measure 35 has a half-note chord (D4, F#4, A4) tied to a half-note chord (E4, G4, B4) in measure 36.

36

The musical score for measures 36 and 37 is arranged for a large ensemble. The key signature is two sharps (F# and C#), and the time signature is 4/4. The instruments and their parts are as follows:

- Fl. (Flute):** Measures 36 and 37. In measure 36, it plays a quarter note F#4, followed by a triplet of eighth notes (G#4, A4, B4), and then a quarter rest. In measure 37, it plays a quarter note C#5, followed by a quarter rest.
- El. Pno. (Electric Piano):** Measures 36 and 37. In measure 36, it plays a triplet of eighth notes (F#4, G#4, A4) and then a quarter rest. In measure 37, it plays a quarter note B4, followed by a quarter rest.
- El. B. (Electric Bass):** Measures 36 and 37. In measure 36, it plays a triplet of eighth notes (F#3, G#3, A3) and then a quarter rest. In measure 37, it plays a quarter note B3, followed by a quarter rest.
- D. Set (Drums):** Measures 36 and 37. In measure 36, it plays a triplet of eighth notes (F#4, G#4, A4) and then a quarter rest. In measure 37, it plays a quarter note B4, followed by a quarter rest.
- Synth. (Synthesizer):** Measures 36 and 37. In measure 36, it plays a triplet of eighth notes (F#4, G#4, A4) and then a quarter rest. In measure 37, it plays a quarter note B4, followed by a quarter rest.
- St. (Saxophone):** Measures 36 and 37. In measure 36, it plays a quarter note F#4, followed by a quarter rest. In measure 37, it plays a quarter note C#5, followed by a quarter rest.
- S. (Soprano):** Measures 36 and 37. In measure 36, it plays a quarter note F#4, followed by a quarter rest. In measure 37, it plays a quarter note C#5, followed by a quarter rest.
- El. Guit. (Electric Guitars):** Measures 36 and 37. In measure 36, it plays a quarter note F#4, followed by a quarter rest. In measure 37, it plays a quarter note C#5, followed by a quarter rest.

37

Fl.

El. Pno.

El. B.

D. Set

Synth.

St.

S.

El. Guit.

El. Guit.

El. Guit.

Detailed description: This musical score page contains measures 37 through 40. The key signature has two sharps (F# and C#). The Flute (Fl.) part in measure 37 starts with a quarter note on G4, followed by quarter notes on A4, B4, and C5, ending with a half note on B4. The Electric Piano (El. Pno.) part features a block chord in measure 37, followed by a quarter note on G4 in measure 38, and a triplet of eighth notes (F#4, G4, A4) in measure 39. The Electric Bass (El. B.) part has a triplet of eighth notes (G2, F#2, E2) in measure 37, followed by quarter notes on G2, A2, B2, and C3 in measures 38-39, and a triplet of eighth notes (B2, A2, G2) in measure 40. The Drums (D. Set) part includes a snare drum in measure 37, a hi-hat in measure 38, and a snare drum in measure 39, with a triplet of eighth notes (G2, F#2, E2) in measure 40. The Synthesizer (Synth.) part has a triplet of eighth notes (G2, F#2, E2) in measure 37, followed by a quarter note on G2 in measure 38, and a triplet of eighth notes (G2, F#2, E2) in measure 39. The Strings (St.) and Saxophone (S.) parts are silent. The first Electric Guitar (El. Guit.) part has a quarter note on G4 in measure 37, followed by a quarter note on A4 in measure 38, and a triplet of eighth notes (G4, A4, B4) in measure 39. The other two Electric Guitars are silent.

38

Fl.

El. Pno.

El. B.

D. Set

Synth.

St.

S.

El. Guit.

El. Guit.

El. Guit.

40

Fl.

El. Pno.

El. B.

D. Set

Synth.

St.

S.

El. Guit.

El. Guit.

El. Guit.

Detailed description: This musical score page contains measures 40 and 41. The key signature has two sharps (F# and C#). The Flute (Fl.) part in measure 40 has a triplet of eighth notes (F#, G, A) followed by a quarter rest, then a quarter note B and an eighth note A. In measure 41, it has a quarter note B, a quarter note A, and an eighth note G. The Electric Piano (El. Pno.) part has a triplet of eighth notes (F#, G, A) in measure 40, followed by a quarter rest, then a quarter note B and an eighth note A. In measure 41, it has a quarter note B, a quarter note A, and an eighth note G. The Electric Bass (El. B.) part has a triplet of eighth notes (F#, G, A) in measure 40, followed by a quarter rest, then a quarter note B and an eighth note A. In measure 41, it has a quarter note B, a quarter note A, and an eighth note G. The Drums (D. Set) part has a quarter rest in measure 40, followed by a quarter note B and an eighth note A. In measure 41, it has a quarter note B, a quarter note A, and an eighth note G. The Synth. part has a quarter rest in measure 40, followed by a quarter note B and an eighth note A. In measure 41, it has a quarter note B, a quarter note A, and an eighth note G. The Saxophone (St.) part has a quarter rest in measure 40, followed by a quarter note B and an eighth note A. In measure 41, it has a quarter note B, a quarter note A, and an eighth note G. The Soprano (S.) part has a quarter rest in measure 40, followed by a quarter note B and an eighth note A. In measure 41, it has a quarter note B, a quarter note A, and an eighth note G. The three Electric Guitar (El. Guit.) parts have a quarter rest in measure 40, followed by a quarter note B and an eighth note A. In measure 41, they have a quarter note B, a quarter note A, and an eighth note G.

42

Fl.

El. Pno.

El. B.

D. Set

Synth.

St.

S.

El. Guit.

El. Guit.

El. Guit.

44

Fl.

El. Pno.

El. B.

D. Set

Synth.

St.

S.

El. Guit.

El. Guit.

El. Guit.

46

Fl.

El. Pno.

El. B.

D. Set

Synth.

St.

S.

El. Guit.

El. Guit.

El. Guit.

47

Fl.

El. Pno.

El. B.

D. Set

Synth.

St.

S.

El. Guit.

El. Guit.

El. Guit.

7

The musical score for page 27, measures 47-50, is as follows:

- Fl.**: Measure 47 has a whole rest. Measures 48-50 are empty.
- El. Pno.**: Measures 47-50 feature a triplet of eighth notes (F#4, A#4, C#5) in measure 47, followed by a triplet of eighth notes (D#5, F#5, A5) in measure 48, and a triplet of eighth notes (B5, D#6, F#6) in measure 49. Measure 50 is empty.
- El. B.**: Measures 47-50 feature a triplet of eighth notes (F#3, A#3, C#4) in measure 47, followed by a triplet of eighth notes (D#4, F#4, A4) in measure 48, and a triplet of eighth notes (B4, D#5, F#5) in measure 49. Measure 50 is empty.
- D. Set**: Measures 47-50 feature a complex drum pattern with various notes and rests, including a triplet of eighth notes (F#4, A#4, C#5) in measure 47, followed by a triplet of eighth notes (D#5, F#5, A5) in measure 48, and a triplet of eighth notes (B5, D#6, F#6) in measure 49. Measure 50 is empty.
- Synth.**: Measures 47-50 are empty.
- St.**: Measures 47-50 are empty.
- S.**: Measures 47-50 are empty.
- El. Guit.**: Measures 47-50 are empty.
- El. Guit.**: Measures 47-50 are empty.
- El. Guit.**: Measures 47-50 feature a triplet of eighth notes (F#4, A#4, C#5) in measure 47, followed by a triplet of eighth notes (D#5, F#5, A5) in measure 48, and a triplet of eighth notes (B5, D#6, F#6) in measure 49. Measure 50 is empty.

48

Fl.

El. Pno.

El. B.

D. Set

Synth.

St.

S.

El. Guit.

El. Guit.

El. Guit.

Detailed description: This musical score page contains measures 48 through 51. The key signature has two sharps (F# and C#). The Flute (Fl.) part has a whole rest in measure 48. The Electric Piano (El. Pno.) part has a whole note chord in measure 48 and a triplet of eighth notes in measure 51. The Electric Bass (El. B.) part features a continuous eighth-note triplet pattern across measures 48-51. The Drums (D. Set) part includes a snare drum in measure 48, followed by a pattern of eighth notes and sixteenth notes with triplet markings in measures 49-51. The Synthesizer (Synth.) part has a whole rest in measure 48. The Strings (St.) and Saxophone (S.) parts also have whole rests in measure 48. The first two Electric Guitar (El. Guit.) parts have whole rests in measure 48. The third Electric Guitar part has a melodic line in measure 48, a whole rest in measure 49, and a complex figure in measure 51 that includes a seven-measure rest and a final eighth-note chord.

49

Fl.

El. Pno.

El. B.

D. Set

Synth.

St.

S.

El. Guit.

El. Guit.

El. Guit.

50

Fl.

El. Pno.

El. B.

D. Set

Synth.

St.

S.

El. Guit.

El. Guit.

El. Guit.

51

The musical score for page 51 is arranged for a large ensemble. The instruments and their parts are as follows:

- Fl. (Flute):** A single measure with a whole rest.
- El. Pno. (Electric Piano):** A melodic line starting with a triplet of eighth notes, followed by a quarter note, a dotted half note, and another triplet of eighth notes.
- El. B. (Electric Bass):** A rhythmic line featuring a series of eighth notes, with several triplet markings.
- D. Set (Drum Set):** A complex rhythmic pattern including eighth notes, quarter notes, and triplet markings.
- Synth. (Synthesizer):** A single measure with a whole rest.
- St. (Saxophone):** A single measure with a whole rest.
- S. (Soprano):** A single measure with a whole rest.
- El. Guit. (Electric Guitars):** Three staves, each with a single measure containing a whole rest. The first two staves have an '8' below the staff line.

52

The musical score for measures 52 and 53 is written for a nine-piece ensemble. The key signature is two sharps (F# and C#), and the time signature is 4/4. The instruments and their parts are as follows:

- Fl. (Flute):** Measure 52 has a whole rest. Measure 53 has a whole rest.
- El. Pno. (Electric Piano):** Measure 52 has a dotted quarter note G4, an eighth note A4, and a quarter note B4, beamed together with a triplet bracket. Measure 53 has a dotted half note C#5.
- El. B. (Electric Bass):** Measure 52 has a dotted quarter note G2, an eighth note A2, and a quarter note B2, beamed together with a triplet bracket. Measure 53 has a dotted quarter note C#3, an eighth note D3, and a quarter note E3, beamed together with a triplet bracket.
- D. Set (Drums):** Measure 52 has a bass drum on beat 1, a snare on beat 2, and a hi-hat on beat 3. Measure 53 has a bass drum on beat 1, a snare on beat 2, and a hi-hat on beat 3.
- Synth. (Synthesizer):** Measure 52 has a whole rest. Measure 53 has a whole rest.
- St. (Saxophone):** Measure 52 has a whole rest. Measure 53 has a whole rest.
- S. (Strings):** Measure 52 has a dotted quarter note G4, an eighth note A4, and a quarter note B4, beamed together with a triplet bracket. Measure 53 has a dotted half note C#5.
- El. Guit. (Electric Guitar 1):** Measure 52 has a dotted quarter note G4, an eighth note A4, and a quarter note B4, beamed together with a triplet bracket. Measure 53 has a dotted half note C#5.
- El. Guit. (Electric Guitar 2):** Measure 52 has a whole rest. Measure 53 has a whole rest.
- El. Guit. (Electric Guitar 3):** Measure 52 has a whole rest. Measure 53 has a whole rest.

53

Fl.

El. Pno.

El. B.

D. Set

Synth.

St.

S.

El. Guit.

El. Guit.

El. Guit.

54

Fl.

El. Pno.

El. B.

D. Set

Synth.

St.

S.

El. Guit.

El. Guit.

El. Guit.

55

Fl.

El. Pno.

El. B.

D. Set

Synth.

St.

S.

El. Guit.

El. Guit.

El. Guit.

56

Fl.

El. Pno.

El. B.

D. Set

Synth.

St.

S.

El. Guit.

El. Guit.

El. Guit.

57

Fl.

El. Pno.

El. B.

D. Set

Synth.

St.

S.

El. Guit.

El. Guit.

El. Guit.

58

Fl.

El. Pno.

El. B.

D. Set

Synth.

St.

S.

El. Guit.

El. Guit.

El. Guit.

Detailed description: This musical score page contains measures 58 through 61. The key signature has two sharps (F# and C#). The Flute (Fl.) part has a whole rest in measure 58. The Electric Piano (El. Pno.) part features a complex texture in measure 58 with multiple overlapping notes, followed by a triplet of eighth notes in measure 59 and chords in measures 60 and 61. The Electric Bass (El. B.) part plays a rhythmic pattern of eighth notes with triplet markings in measures 59 and 60. The Drums (D. Set) part includes a snare drum pattern with triplet markings in measures 59 and 60. The Synthesizer (Synth.) part has a whole rest in measure 58 and triplet markings in measures 59 and 60. The Saxophone (Sax.) part has a whole rest in measure 58. The Strings (St.) part has a whole rest in measure 58. The Soloist (S.) part has a whole rest in measure 58 and chords in measures 60 and 61. The Electric Guitar (El. Guit.) parts include a whole rest in measure 58, a single note in measure 60, and a triplet of eighth notes in measure 61. There are three staves for Electric Guitars, with the first two having whole rests and the third having a triplet of eighth notes in measure 61.

59

Fl.

El. Pno.

El. B.

D. Set

Synth.

St.

S.

El. Guit.

El. Guit.

El. Guit.

Detailed description: This musical score page contains measures 59 and 60. The key signature has two sharps (F# and C#). The Flute (Fl.) part has a whole rest in measure 59 and a whole rest in measure 60. The Electric Piano (El. Pno.) part features a complex texture with a whole note chord in measure 59, a triplet of eighth notes in measure 60, and a quarter note in measure 61. The Electric Bass (El. B.) part has a steady eighth-note triplet pattern in measure 59 and a quarter note in measure 60. The Drums (D. Set) part includes a variety of rhythmic patterns, including eighth notes, quarter notes, and eighth-note triplets, with some measures marked with 'x' for cymbals. The Synthesizer (Synth.) part has a whole rest in measure 59 and a quarter note in measure 60. The Strings (St.) part has a whole rest in measure 59 and a whole rest in measure 60. The Saxophone (S.) part has a whole note chord in measure 59 and a whole note chord in measure 60. The Electric Guitars (El. Guit.) part has a whole note chord in measure 59 and a whole note chord in measure 60. The score is written for three electric guitar parts, each with a whole note chord in measure 59 and a whole note chord in measure 60.

60

Fl.

El. Pno.

El. B.

D. Set

Synth.

St.

S.

El. Guit.

El. Guit.

El. Guit.

61

Fl.

El. Pno.

El. B.

D. Set

Synth.

St.

S.

El. Guit.

El. Guit.

El. Guit.

Detailed description: This musical score page contains measures 61 through 64. The key signature has two sharps (F# and C#). The Flute (Fl.) part begins in measure 61 with a quarter note G4, followed by quarter notes A4, B4, and C5, ending with a half note D5. The Electric Piano (El. Pno.) part has a whole rest in measure 61, followed by a half note D5 in measure 62, and a half note C5 in measure 63. The Electric Bass (El. B.) part features a triplet of eighth notes (G2, A2, B2) in measure 61, followed by a half note C3 in measure 62, and a half note D3 in measure 63. The Double Bass (D. Set) part has a whole rest in measure 61, followed by a half note D3 in measure 62, and a half note C3 in measure 63. The Synthesizer (Synth.) part has a whole rest in measure 61, followed by a half note D3 in measure 62, and a half note C3 in measure 63. The Strings (St.) part has a whole rest in measure 61, followed by a half note D3 in measure 62, and a half note C3 in measure 63. The Saxophone (S.) part has a whole rest in measure 61, followed by a half note D3 in measure 62, and a half note C3 in measure 63. The Electric Guitars (El. Guit.) part has a whole rest in measure 61, followed by a half note D3 in measure 62, and a half note C3 in measure 63. The score includes various musical notations such as treble and bass clefs, key signatures, rests, and triplets.

62

Fl.

El. Pno.

El. B.

D. Set

Synth.

St.

S.

El. Guit.

El. Guit.

El. Guit.

63

Fl.

El. Pno.

El. B.

D. Set

Synth.

St.

S.

El. Guit.

El. Guit.

El. Guit.

65

Fl.

El. Pno.

El. B.

D. Set

Synth.

St.

S.

El. Guit.

El. Guit.

El. Guit.

Detailed description: This musical score page contains measures 65 through 68. The key signature is two sharps (F# and C#). The Flute (Fl.) part in measure 65 starts with a quarter note G4, followed by a quarter note A4, a quarter note B4, and a half note C5. The Electric Piano (El. Pno.) part features chords in measures 65 and 68, with triplets of eighth notes in measures 66 and 67. The Electric Bass (El. B.) part plays a steady eighth-note triplet pattern throughout measures 65-68. The Drums (D. Set) part includes a snare drum in measure 65, a hi-hat in measure 66, and a snare drum in measure 67. The Synthesizer (Synth.), Strings (St.), Saxophone (S.), and three Electric Guitars (El. Guit.) are all silent in this section, indicated by whole rests.

66

Fl.

El. Pno.

El. B.

D. Set

Synth.

St.

S.

El. Guit.

El. Guit.

El. Guit.

Detailed description: This musical score page contains measures 66 and 67. The key signature has two sharps (F# and C#). The Flute (Fl.) part in measure 66 has a quarter note F#4, followed by rests in measure 67. The Electric Piano (El. Pno.) part features a complex melodic line in measure 66 with a triplet of eighth notes (F#4, A4, B4) and a half note (C#5) in measure 67. The Electric Bass (El. B.) part has a steady eighth-note triplet pattern (F#3, A3, B3) in measure 66 and continues in measure 67. The Drums (D. Set) part includes a snare drum in measure 66 and a complex pattern of snare and hi-hat in measure 67. The Synth part has a half note F#4 in measure 66 and a half note C#5 in measure 67. The Saxophone (St.) and Trombone (S.) parts have whole rests in both measures. The first Electric Guitar (El. Guit.) part has a whole rest in measure 66 and a triplet of eighth notes (F#4, A4, B4) in measure 67. The second Electric Guitar part has a quarter rest in measure 66 and a complex pattern of eighth notes and chords in measure 67. The third Electric Guitar part has a whole rest in measure 66 and a half note C#5 in measure 67.

67

The musical score for measures 67 and 68 is written for a multi-instrument ensemble. The key signature is two sharps (F# and C#), and the time signature is 4/4. The instruments and their parts are as follows:

- Fl. (Flute):** Measures 67 and 68. In measure 67, it plays a quarter note F#4, an eighth note G#4, a quarter note A4, and a quarter note B4. In measure 68, it plays a quarter note C#5, a quarter note D5, a quarter note E5, and a quarter note F#5.
- El. Pno. (Electric Piano):** Measures 67 and 68. In measure 67, it plays a half note chord of F#4 and C#5, and a half note chord of G#4 and D5. In measure 68, it plays a half note chord of A4 and E5, and a half note chord of F#4 and C#5.
- El. B. (Electric Bass):** Measures 67 and 68. In measure 67, it plays a half note F#3, a half note G#3, and a half note A3. In measure 68, it plays a half note B3, a half note C#4, and a half note D4.
- D. Set (Drums):** Measures 67 and 68. In measure 67, it plays a quarter note snare, a quarter note snare, a quarter note snare, and a quarter note snare. In measure 68, it plays a quarter note snare, a quarter note snare, a quarter note snare, and a quarter note snare.
- Synth. (Synthesizer):** Measures 67 and 68. In measure 67, it plays a half note F#4 and a half note C#5. In measure 68, it plays a half note G#4 and a half note D5.
- St. (Strings):** Measures 67 and 68. In measure 67, it plays a half note F#4 and a half note C#5. In measure 68, it plays a half note G#4 and a half note D5.
- S. (Saxophone):** Measures 67 and 68. In measure 67, it plays a half note F#4 and a half note C#5. In measure 68, it plays a half note G#4 and a half note D5.
- El. Guit. (Electric Guitar):** Measures 67 and 68. In measure 67, it plays a half note F#4 and a half note C#5. In measure 68, it plays a half note G#4 and a half note D5.
- El. Guit. (Electric Guitar):** Measures 67 and 68. In measure 67, it plays a half note F#4 and a half note C#5. In measure 68, it plays a half note G#4 and a half note D5.
- El. Guit. (Electric Guitar):** Measures 67 and 68. In measure 67, it plays a half note F#4 and a half note C#5. In measure 68, it plays a half note G#4 and a half note D5.

69

Fl.

El. Pno.

El. B.

D. Set

Synth.

St.

S.

El. Guit.

El. Guit.

El. Guit.

70

Fl.

El. Pno.

El. B.

D. Set

Synth.

St.

S.

El. Guit.

El. Guit.

El. Guit.

Detailed description: This musical score page contains measures 70 and 71. The key signature has two sharps (F# and C#). The Flute (Fl.) part in measure 70 features a triplet of eighth notes (F#, G, A) followed by a quarter note (B) and a triplet of eighth notes (C, B, A). In measure 71, it continues with a quarter note (G), a quarter note (F#), and a half note (E). The Electric Piano (El. Pno.) part in measure 70 has a triplet of eighth notes (F#, G, A) and a quarter note (B). In measure 71, it has a quarter note (G), a quarter note (F#), and a half note (E). The Electric Bass (El. B.) part in measure 70 has a quarter note (F#) and a quarter note (G). In measure 71, it has a quarter note (A) and a quarter note (B). The Drums (D. Set) part in measure 70 has a snare drum hit on the first beat and a cymbal hit on the third beat. In measure 71, it has a snare drum hit on the first beat, a cymbal hit on the third beat, and a snare drum hit on the fourth beat. The Synth. part in measure 70 has a whole note (F#). In measure 71, it has a whole note (G). The St. part in measure 70 has a whole note (F#). In measure 71, it has a whole note (G). The S. part in measure 70 has a whole note (F#). In measure 71, it has a whole note (G). The El. Guit. part in measure 70 has a whole note (F#). In measure 71, it has a whole note (G). The El. Guit. part in measure 70 has a whole note (F#). In measure 71, it has a whole note (G). The El. Guit. part in measure 70 has a whole note (F#). In measure 71, it has a whole note (G).

71 7

Fl.

El. Pno.

El. B.

D. Set

Synth.

St.

S.

El. Guit.

El. Guit.

El. Guit.

72

The musical score for measures 72 and 73 is written for a large ensemble. The key signature is two sharps (F# and C#). The score includes parts for Flute (Fl.), Electric Piano (El. Pno.), Electric Bass (El. B.), Drums (D. Set), Synthesizer (Synth.), Strings (St.), Saxophone (S.), and three Electric Guitars (El. Guit.).

- Fl.:** Measures 72-73. Treble clef. A triplet of eighth notes (F#, A, C#) in measure 72, followed by a whole note rest in measure 73.
- El. Pno.:** Measures 72-73. Treble clef. A whole note chord (F#, C#) in measure 72, followed by a whole note chord (F#, C#) in measure 73.
- El. B.:** Measures 72-73. Bass clef. A triplet of eighth notes (F#, A, C#) in measure 72, followed by a whole note chord (F#, C#) in measure 73.
- D. Set:** Measures 72-73. Treble clef. A complex rhythmic pattern featuring triplets and eighth notes in measure 72, followed by a complex rhythmic pattern in measure 73.
- Synth.:** Measures 72-73. Treble clef. A whole note chord (F#, C#) in measure 72, followed by a whole note chord (F#, C#) in measure 73.
- St.:** Measures 72-73. Treble clef. A whole note chord (F#, C#) in measure 72, followed by a whole note chord (F#, C#) in measure 73.
- S.:** Measures 72-73. Treble clef. A whole note chord (F#, C#) in measure 72, followed by a whole note chord (F#, C#) in measure 73.
- El. Guit. (top):** Measures 72-73. Treble clef. A whole note chord (F#, C#) in measure 72, followed by a whole note chord (F#, C#) in measure 73.
- El. Guit. (middle):** Measures 72-73. Treble clef. A whole note chord (F#, C#) in measure 72, followed by a whole note chord (F#, C#) in measure 73.
- El. Guit. (bottom):** Measures 72-73. Treble clef. A whole note chord (F#, C#) in measure 72, followed by a whole note chord (F#, C#) in measure 73.

73

The musical score for measures 73-76 is written for a multi-instrument ensemble. The key signature is two sharps (F# and C#), and the time signature is 4/4. The instruments and their parts are as follows:

- Fl. (Flute):** Measures 73-74 feature a triplet of eighth notes (F#, A, C#) followed by a quarter note (D). Measures 75-76 feature a triplet of eighth notes (F#, A, C#) followed by a quarter note (D).
- El. Pno. (Electric Piano):** Measures 73-74 feature a triplet of eighth notes (F#, A, C#) followed by a quarter note (D). Measures 75-76 feature a triplet of eighth notes (F#, A, C#) followed by a quarter note (D).
- El. B. (Electric Bass):** Measures 73-74 feature a triplet of eighth notes (F#, A, C#) followed by a quarter note (D). Measures 75-76 feature a triplet of eighth notes (F#, A, C#) followed by a quarter note (D).
- D. Set (Drums):** Measures 73-74 feature a triplet of eighth notes (F#, A, C#) followed by a quarter note (D). Measures 75-76 feature a triplet of eighth notes (F#, A, C#) followed by a quarter note (D).
- Synth. (Synthesizer):** Measures 73-74 feature a triplet of eighth notes (F#, A, C#) followed by a quarter note (D). Measures 75-76 feature a triplet of eighth notes (F#, A, C#) followed by a quarter note (D).
- St. (Strings):** Measures 73-74 feature a triplet of eighth notes (F#, A, C#) followed by a quarter note (D). Measures 75-76 feature a triplet of eighth notes (F#, A, C#) followed by a quarter note (D).
- S. (Saxophone):** Measures 73-74 feature a triplet of eighth notes (F#, A, C#) followed by a quarter note (D). Measures 75-76 feature a triplet of eighth notes (F#, A, C#) followed by a quarter note (D).
- El. Guit. (Electric Guitars):** Measures 73-74 feature a triplet of eighth notes (F#, A, C#) followed by a quarter note (D). Measures 75-76 feature a triplet of eighth notes (F#, A, C#) followed by a quarter note (D).

74

Fl.

El. Pno.

El. B.

D. Set

Synth.

St.

S.

El. Guit.

El. Guit.

El. Guit.

75

The musical score for measures 75 and 76 is written for a large ensemble. The key signature has two sharps (F# and C#). The instruments and their parts are as follows:

- Fl. (Flute):** Measures 75 and 76. Measure 75 has a quarter rest followed by a triplet of eighth notes (F#, A, C#). Measure 76 has a quarter rest followed by a triplet of eighth notes (D, F#, A).
- El. Pno. (Electric Piano):** Measures 75 and 76. Measure 75 has a half note chord (F#, C#). Measure 76 has a half note chord (D, F#).
- El. B. (Electric Bass):** Measures 75 and 76. Measure 75 has a half note chord (F#, C#). Measure 76 has a half note chord (D, F#).
- D. Set (Drums):** Measures 75 and 76. Measure 75 has a half note chord (F#, C#). Measure 76 has a half note chord (D, F#).
- Synth. (Synthesizer):** Measures 75 and 76. Measure 75 has a half note chord (F#, C#). Measure 76 has a half note chord (D, F#).
- St. (Strings):** Measures 75 and 76. Measure 75 has a half note chord (F#, C#). Measure 76 has a half note chord (D, F#).
- S. (Saxophone):** Measures 75 and 76. Measure 75 has a half note chord (F#, C#). Measure 76 has a half note chord (D, F#).
- El. Guit. (Electric Guitars):** Three staves, all measures 75 and 76. Measure 75 has a half note chord (F#, C#). Measure 76 has a half note chord (D, F#).

76

The musical score for measures 76 and 77 is written for a multi-instrument ensemble. The key signature is two sharps (F# and C#), and the time signature is 4/4. The instruments and their parts are as follows:

- Fl. (Flute):** Measures 76-77. Treble clef. A triplet of eighth notes (F#, A, C#) in measure 76, followed by a quarter rest in measure 77.
- El. Pno. (Electric Piano):** Measures 76-77. Treble clef. A triplet of eighth notes (F#, A, C#) in measure 76, followed by a quarter rest in measure 77.
- El. B. (Electric Bass):** Measures 76-77. Bass clef. A triplet of eighth notes (F#, A, C#) in measure 76, followed by a quarter rest in measure 77.
- D. Set (Drums):** Measures 76-77. Two staves. The top staff shows a triplet of eighth notes (F#, A, C#) in measure 76, followed by a quarter rest in measure 77. The bottom staff shows a triplet of eighth notes (F#, A, C#) in measure 76, followed by a quarter rest in measure 77.
- Synth. (Synthesizer):** Measures 76-77. Treble clef. A triplet of eighth notes (F#, A, C#) in measure 76, followed by a quarter rest in measure 77.
- St. (Saxophone):** Measures 76-77. Treble clef. A triplet of eighth notes (F#, A, C#) in measure 76, followed by a quarter rest in measure 77.
- S. (Soprano):** Measures 76-77. Treble clef. A triplet of eighth notes (F#, A, C#) in measure 76, followed by a quarter rest in measure 77.
- El. Guit. (Electric Guitars):** Measures 76-77. Treble clef. A triplet of eighth notes (F#, A, C#) in measure 76, followed by a quarter rest in measure 77.

77

The musical score for measures 77-80 is written for a large ensemble. The key signature is two sharps (F# and C#), and the time signature is 4/4. The instruments and their parts are as follows:

- Fl. (Flute):** Measures 77-79 with quarter notes, and a half note in measure 80.
- El. Pno. (Electric Piano):** Measures 77-79 with chords and eighth notes, and a triplet of eighth notes in measure 80.
- El. B. (Electric Bass):** Measures 77-79 with eighth notes and triplets, and a quarter note in measure 80.
- D. Set (Drums):** Features a complex rhythmic pattern with eighth notes, triplets, and rests throughout measures 77-80.
- Synth. (Synthesizer):** A single sustained note in measure 79.
- St. (Saxophone):** A single sustained note in measure 79.
- S. (Strings):** A single sustained note in measure 79.
- El. Guit. (Electric Guitars):** Three staves, each with a single sustained note in measure 79.

Measure 80 contains a final chord for the Flute, Electric Piano, and Electric Bass, while the other instruments have rests.

78

Fl.

El. Pno.

El. B.

D. Set

Synth.

St.

S.

El. Guit.

El. Guit.

El. Guit.

8

80

Fl.

El. Pno.

El. B.

D. Set

Synth.

St.

S.

El. Guit.

El. Guit.

El. Guit.

81

Fl.

El. Pno.

El. B.

D. Set

Synth.

St.

S.

El. Guit.

El. Guit.

El. Guit.

82

Fl.

El. Pno.

El. B.

D. Set

Synth.

St.

S.

El. Guit.

El. Guit.

El. Guit.

Detailed description: This musical score page contains measures 82 and 83. The key signature has two sharps (F# and C#). The Flute (Fl.) part in measure 82 has a half note F#4, a quarter rest, and in measure 83, a half note G#4, a quarter note A4, and a quarter note B4, with a triplet of eighth notes G#4, A4, B4 in measure 83. The Electric Piano (El. Pno.) part in measure 82 has a half note F#4, a quarter note G#4, and a quarter note A4, with a triplet of eighth notes G#4, A4, B4 in measure 83. The Electric Bass (El. B.) part in measure 82 has a half note F#2, a quarter note G#2, and a quarter note A2, with a triplet of eighth notes F#2, G#2, A2 in measure 83. The Drums (D. Set) part in measure 82 has a half note F#4, a quarter note G#4, and a quarter note A4, with a triplet of eighth notes F#4, G#4, A4 in measure 83. The Synthesizer (Synth.) part in measure 82 has a half note F#4, a quarter note G#4, and a quarter note A4, with a triplet of eighth notes F#4, G#4, A4 in measure 83. The Saxophone (St.) part in measure 82 has a half note F#4, a quarter note G#4, and a quarter note A4, with a triplet of eighth notes F#4, G#4, A4 in measure 83. The Saxophone (S.) part in measure 82 has a half note F#4, a quarter note G#4, and a quarter note A4, with a triplet of eighth notes F#4, G#4, A4 in measure 83. The three Electric Guitar (El. Guit.) parts in measure 82 have a half note F#4, a quarter note G#4, and a quarter note A4, with a triplet of eighth notes F#4, G#4, A4 in measure 83.

84

The musical score for measures 84 and 85 is written for a multi-instrument ensemble. The key signature has two sharps (F# and C#), and the time signature is 4/4. The instruments and their parts are as follows:

- Fl. (Flute):** Measures 84 and 85. In measure 84, it plays a triplet of eighth notes (F#, A, C#) followed by a quarter note (D#). In measure 85, it plays a triplet of eighth notes (F#, A, C#) followed by a quarter note (D#).
- El. Pno. (Electric Piano):** Measures 84 and 85. In measure 84, it plays a triplet of eighth notes (F#, A, C#) followed by a quarter note (D#). In measure 85, it plays a triplet of eighth notes (F#, A, C#) followed by a quarter note (D#).
- El. B. (Electric Bass):** Measures 84 and 85. In measure 84, it plays a triplet of eighth notes (F#, A, C#) followed by a quarter note (D#). In measure 85, it plays a triplet of eighth notes (F#, A, C#) followed by a quarter note (D#).
- D. Set (Drums):** Measures 84 and 85. In measure 84, it plays a triplet of eighth notes (F#, A, C#) followed by a quarter note (D#). In measure 85, it plays a triplet of eighth notes (F#, A, C#) followed by a quarter note (D#).
- Synth. (Synthesizer):** Measures 84 and 85. In measure 84, it plays a triplet of eighth notes (F#, A, C#) followed by a quarter note (D#). In measure 85, it plays a triplet of eighth notes (F#, A, C#) followed by a quarter note (D#).
- St. (Saxophone):** Measures 84 and 85. In measure 84, it plays a triplet of eighth notes (F#, A, C#) followed by a quarter note (D#). In measure 85, it plays a triplet of eighth notes (F#, A, C#) followed by a quarter note (D#).
- El. Guit. (Electric Guitars):** Measures 84 and 85. In measure 84, it plays a triplet of eighth notes (F#, A, C#) followed by a quarter note (D#). In measure 85, it plays a triplet of eighth notes (F#, A, C#) followed by a quarter note (D#).

85

The musical score for measures 85 and 86 is arranged for a multi-instrument ensemble. The key signature is two sharps (F# and C#), and the time signature is 4/4. The instruments are: Flute (Fl.), Electric Piano (El. Pno.), Electric Bass (El. B.), Drums (D. Set), Synthesizer (Synth.), Saxophone (St.), and three Electric Guitars (El. Guit.).

Measure 85:

- Fl.:** Starts with a quarter rest, followed by a half note G4, a quarter note A4, and a half note B4.
- El. Pno.:** Starts with a quarter rest, followed by a half note G4, a quarter note A4, and a half note B4.
- El. B.:** Starts with a quarter rest, followed by a half note G4, a quarter note A4, and a half note B4.
- D. Set:** Features a complex rhythmic pattern with eighth and sixteenth notes, including triplets and a double bar line.
- Synth.:** Remains silent.
- St.:** Starts with a quarter rest, followed by a half note G4, a quarter note A4, and a half note B4.
- El. Guit.:** Three staves, each with a quarter rest, followed by a half note G4, a quarter note A4, and a half note B4.

Measure 86:

- Fl.:** Starts with a quarter rest, followed by a half note G4, a quarter note A4, and a half note B4.
- El. Pno.:** Starts with a quarter rest, followed by a half note G4, a quarter note A4, and a half note B4.
- El. B.:** Starts with a quarter rest, followed by a half note G4, a quarter note A4, and a half note B4.
- D. Set:** Continues the rhythmic pattern from measure 85.
- Synth.:** Remains silent.
- St.:** Starts with a quarter rest, followed by a half note G4, a quarter note A4, and a half note B4.
- El. Guit.:** Three staves, each with a quarter rest, followed by a half note G4, a quarter note A4, and a half note B4.

86

Fl.

El. Pno.

El. B.

D. Set

Synth.

St.

S.

El. Guit.

El. Guit.

El. Guit.

Detailed description: This page of a musical score contains measures 86 and 87. The key signature has two sharps (F# and C#). The Flute (Fl.) part in measure 86 has a whole note G4. The Electric Piano (El. Pno.) part in measure 86 has a whole note chord of G4 and B4. The Electric Bass (El. B.) part in measure 86 has a triplet of eighth notes (G3, A3, B3) followed by a quarter note (C4). The Drum Set (D. Set) part in measure 86 has a bass drum on G3, a snare on A3, and a hi-hat on B3. The Synth. part in measure 86 has a whole note chord of G4 and B4. The Saxophone (St.) part in measure 86 has a whole note G4. The Saxophone (S.) part in measure 86 has a whole rest. The Electric Guitar (El. Guit.) parts in measure 86 have whole rests. In measure 87, the Flute (Fl.) part has a whole note G4. The Electric Piano (El. Pno.) part has a whole note chord of G4 and B4. The Electric Bass (El. B.) part has a triplet of eighth notes (G3, A3, B3) followed by a quarter note (C4). The Drum Set (D. Set) part has a bass drum on G3, a snare on A3, and a hi-hat on B3. The Synth. part has a whole note chord of G4 and B4. The Saxophone (St.) part has a whole note G4. The Saxophone (S.) part has a whole rest. The Electric Guitar (El. Guit.) parts have whole rests.

87

Fl.

El. Pno.

El. B.

D. Set

Synth.

St.

S.

El. Guit.

El. Guit.

El. Guit.

Detailed description: This musical score page contains measures 87 through 90. The key signature is two sharps (F# and C#). The Flute (Fl.) part has a whole rest in measure 87. The Electric Piano (El. Pno.) part features a series of chords, with a triplet of eighth notes in measure 89. The Electric Bass (El. B.) part plays a steady eighth-note pattern, with triplet markings over measures 88, 89, and 90. The Drums (D. Set) part includes a complex pattern of eighth and sixteenth notes, with triplet markings over measures 88, 89, and 90. The Synthesizer (Synth.) part has a whole rest in measure 87 and a triplet of eighth notes in measure 89. The Saxophone (St.) part has a whole rest in measure 87 and a triplet of eighth notes in measure 89. The Soprano (S.) part has a whole rest in measure 87. The three Electric Guitar (El. Guit.) parts have whole rests in measures 87, 88, and 89, and a triplet of eighth notes in measure 90.

88

Fl.

El. Pno.

El. B.

D. Set

Synth.

St.

S.

El. Guit.

El. Guit.

El. Guit.

Detailed description: This musical score page contains measures 88 and 89. The key signature has two sharps (F# and C#). The Flute (Fl.) part has whole rests in both measures. The Electric Piano (El. Pno.) part features a complex melodic line with triplets and slurs. The Electric Bass (El. B.) part plays a steady eighth-note triplet pattern. The Drums (D. Set) part includes a snare drum in measure 88 and a cymbal in measure 89, with other parts marked with 'x'. The Synthesizer (Synth.) part has a melodic line with triplets and slurs. The Saxophone (St.) part has a whole rest in measure 88 and a whole note in measure 89. The Soprano (S.) part has whole rests in both measures. The three Electric Guitar (El. Guit.) parts have whole rests in both measures. The score is written for a band with a variety of instruments, including woodwinds, keyboards, bass, drums, and strings.

90

Fl.

El. Pno.

El. B.

D. Set

Synth.

St.

S.

El. Guit.

El. Guit.

El. Guit.

91

The musical score for measures 91-94 is written for a large ensemble. The key signature has two sharps (F# and C#), and the time signature is 4/4. The instruments and their parts are as follows:

- Fl. (Flute):** Measure 91 has a whole rest. Measure 92 has a quarter rest. Measure 93 has a half note G4. Measure 94 has a half note A4.
- El. Pno. (Electric Piano):** Measure 91 has a whole note chord (F#4, C#5). Measure 92 has a whole note chord (F#4, C#5). Measure 93 has a half note G4. Measure 94 has a half note A4.
- El. B. (Electric Bass):** Measure 91 has a quarter note F#2. Measure 92 has a quarter note G2. Measure 93 has a quarter note A2. Measure 94 has a quarter note B2.
- D. Set (Drums):** Measure 91 has a quarter note on the snare. Measure 92 has a quarter note on the snare. Measure 93 has a quarter note on the snare. Measure 94 has a quarter note on the snare.
- Synth. (Synthesizer):** Measure 91 has a whole note chord (F#4, C#5). Measure 92 has a whole note chord (F#4, C#5). Measure 93 has a whole note chord (F#4, C#5). Measure 94 has a whole note chord (F#4, C#5).
- St. (Saxophone):** Measure 91 has a whole rest. Measure 92 has a whole rest. Measure 93 has a whole rest. Measure 94 has a whole rest.
- S. (Trombone):** Measure 91 has a whole rest. Measure 92 has a whole rest. Measure 93 has a whole rest. Measure 94 has a whole rest.
- El. Guit. (Electric Guitars):** Measure 91 has a whole rest. Measure 92 has a whole rest. Measure 93 has a whole rest. Measure 94 has a whole rest.

Measures 91-94 are marked with a '3' and a bracket, indicating a triplet. The triplet is marked with a '3' and a bracket, indicating a triplet. The triplet is marked with a '3' and a bracket, indicating a triplet. The triplet is marked with a '3' and a bracket, indicating a triplet.

92

Fl.

El. Pno.

El. B.

D. Set

Synth.

St.

S.

El. Guit.

El. Guit.

El. Guit.

Detailed description: This musical score page contains measures 92 and 93. The key signature has two sharps (F# and C#). The Flute (Fl.) part in measure 92 features a melodic line with eighth and quarter notes, including triplets. The Electric Piano (El. Pno.) part provides harmonic support with chords and triplets. The Electric Bass (El. B.) part plays a steady eighth-note pattern. The Drums (D. Set) part includes a snare drum pattern with eighth notes and a cymbal. The Synth, St. (Strings), and two El. Guit. parts are silent in measure 92. The Saxophone (S.) part plays a sustained chord. In measure 93, the Flute and El. Pno. continue their parts, while the El. B. and D. Set parts maintain their patterns. The Saxophone part changes to a new chord. The three El. Guit. parts remain silent.

94

Fl.

El. Pno.

El. B.

D. Set

Synth.

St.

S.

El. Guit.

El. Guit.

El. Guit.

96

Fl.

El. Pno.

El. B.

D. Set

Synth.

St.

S.

El. Guit.

El. Guit.

El. Guit.

97

Fl.

El. Pno.

El. B.

D. Set

Synth.

St.

S.

El. Guit.

El. Guit.

El. Guit.

98

Fl.

El. Pno.

El. B.

D. Set

Synth.

St.

S.

El. Guit.

El. Guit.

El. Guit.

100

Fl.

El. Pno.

El. B.

D. Set

Synth.

St.

S.

El. Guit.

El. Guit.

El. Guit.

102

Fl.

El. Pno.

El. B.

D. Set

Synth.

St.

S.

El. Guit.

El. Guit.

El. Guit.

104

Fl.

El. Pno.

El. B.

D. Set

Synth.

St.

S.

El. Guit.

El. Guit.

El. Guit.

105

The musical score for measures 105-108 is written for a large ensemble. The key signature is two sharps (F# and C#), and the time signature is 4/4. The instruments and their parts are as follows:

- Fl. (Flute):** Measures 105-106 are silent. In measure 107, it plays a single note (F#5). In measure 108, it plays a single note (C#6).
- El. Pno. (Electric Piano):** Measures 105-106 feature a melodic line with eighth and sixteenth notes, including triplets. Measures 107-108 continue this line with more complex rhythmic patterns.
- El. B. (Electric Bass):** Measures 105-106 feature a steady eighth-note bass line with triplets. Measures 107-108 continue this line.
- D. Set (Drum Set):** Measures 105-106 feature a pattern of eighth notes and rests. Measures 107-108 continue this pattern with triplets.
- Synth. (Synthesizer):** Measures 105-106 feature a melodic line with eighth and sixteenth notes, including triplets. Measures 107-108 continue this line.
- St. (Saxophone):** Measures 105-106 are silent. In measure 107, it plays a single note (F#5). In measure 108, it plays a single note (C#6).
- S. (Strings):** Measures 105-106 are silent. In measure 107, it plays a single note (F#5). In measure 108, it plays a single note (C#6).
- El. Guit. (Electric Guitars):** Measures 105-106 are silent. In measure 107, it plays a single note (F#5). In measure 108, it plays a single note (C#6).

106

Fl.

El. Pno.

El. B.

D. Set

Synth.

St.

S.

El. Guit.

El. Guit.

El. Guit.

108

Fl.

El. Pno.

El. B.

D. Set

Synth.

St.

S.

El. Guit.

El. Guit.

El. Guit.

110

Fl.

El. Pno.

El. B.

D. Set

Synth.

St.

S.

El. Guit.

El. Guit.

El. Guit.

112

Fl.

El. Pno.

El. B.

D. Set

Synth.

St.

S.

El. Guit.

El. Guit.

El. Guit.

113

Fl.

El. Pno.

El. B.

D. Set

Synth.

St.

S.

El. Guit.

El. Guit.

El. Guit.

114

This musical score page contains measures 114 and 115. The key signature has two sharps (F# and C#). The instruments and their parts are as follows:

- Fl.**: Flute, Treble clef. Measure 114 has a whole rest. Measure 115 has a quarter rest followed by an eighth-note triplet (D5, E5, F#5).
- El. Pno.**: Electric Piano, Treble clef. Measure 114 has a half-note chord (F#4, A4) with a fermata. Measure 115 has a half-note chord (F#4, A4) with a fermata, followed by a quarter-note triplet (D5, E5, F#5).
- El. B.**: Electric Bass, Bass clef. Measure 114 has a half-note triplet (F#3, A3, C#4). Measure 115 has a half-note triplet (F#3, A3, C#4).
- D. Set**: Drums, Percussion clef. Measure 114 has a quarter rest, followed by eighth-note triplets (F#4, A4, C#5) and (F#4, A4, C#5). Measure 115 has a quarter rest, followed by eighth-note triplets (F#4, A4, C#5) and (F#4, A4, C#5).
- Synth.**: Synthesizer, Treble clef. Measure 114 has a half-note chord (F#4, A4) with a fermata. Measure 115 has a half-note chord (F#4, A4) with a fermata.
- St.**: Strings, Treble clef. Measure 114 has a whole rest. Measure 115 has a whole rest.
- S.**: Saxophone, Treble clef. Measure 114 has a whole rest. Measure 115 has a whole rest.
- El. Guit.**: Electric Guitar, Treble clef. Measure 114 has a whole rest. Measure 115 has a quarter rest followed by an eighth-note triplet (D5, E5, F#5).
- El. Guit.**: Electric Guitar, Treble clef. Measure 114 has a whole rest. Measure 115 has a whole rest.
- El. Guit.**: Electric Guitar, Treble clef. Measure 114 has a whole rest. Measure 115 has a whole rest.

116

Fl.

El. Pno.

El. B.

D. Set

Synth.

St.

S.

El. Guit.

El. Guit.

El. Guit.

Detailed description: This musical score page contains measures 116 and 117. The key signature has two sharps (F# and C#). The Flute (Fl.) part in measure 116 features a melodic line with eighth and sixteenth notes, including a triplet of eighth notes. The Electric Piano (El. Pno.) part has a similar melodic line with a triplet of eighth notes. The Electric Bass (El. B.) part plays a steady eighth-note pattern. The Drums (D. Set) part includes a snare drum pattern with eighth-note triplets. The Synth, St. (Strings), and two El. Guit. parts are silent in measure 116. In measure 117, the Fl. and El. Pno. parts continue their melodic lines. The El. B. part continues its eighth-note pattern. The D. Set part continues its snare drum pattern. The Synth, St., and two El. Guit. parts remain silent.

118

Fl.

El. Pno.

El. B.

D. Set

Synth.

St.

S.

El. Guit.

El. Guit.

El. Guit.