

♩ = 127

Square Synthesizer, BASS



Electric Piano, RHODES

http://www.nonstop2k.com  
NS2K Member: djrenco

A grand staff (treble and bass clefs) in a key of three sharps and 4/4 time. The right hand plays a continuous eighth-note pattern: F#4, G#4, A4, B4, C#5, D5, E5, F#5. The left hand plays a continuous eighth-note pattern: F#3, G#3, A3, B3, C#4, D4, E4, F#4.

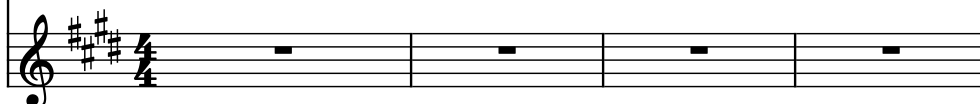
Saw Synthesizer, SAW



Saw Synthesizer, LOWSAW

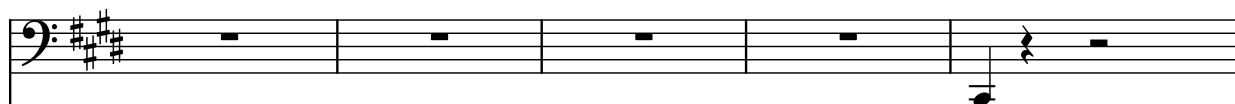


Saw Synthesizer, STAB

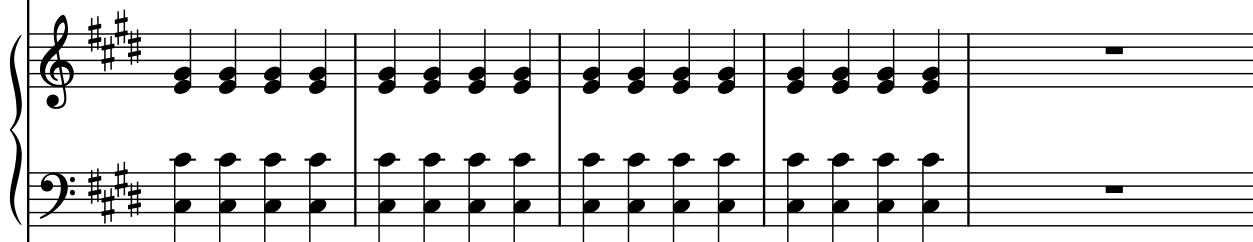


5

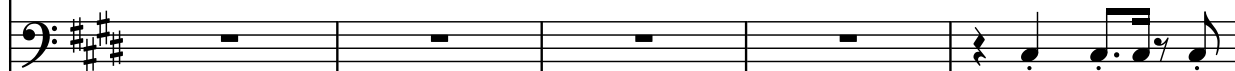
Synth.



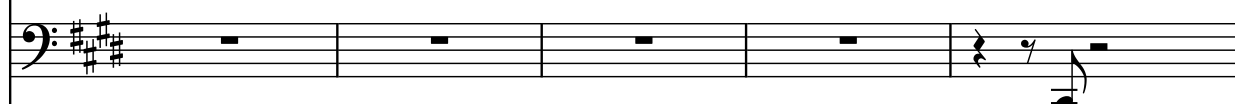
El. Pno.



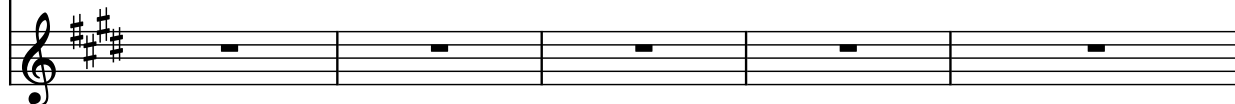
Synth.



Synth.



Synth.



10

Synth.

El. Pno.

Synth.

Synth.

Synth.

14

Synth.

El. Pno.

Synth.

Synth.

Synth.

21

Synth.

El. Pno.

Synth.

Synth.

Synth.

30

Synth.

El. Pno.

Synth.

Synth.

Synth.