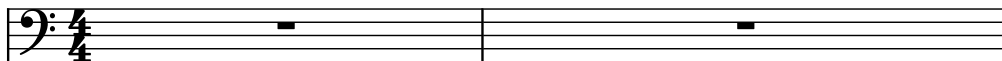
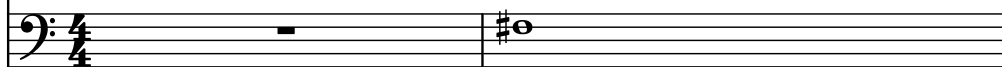


♩ = 127

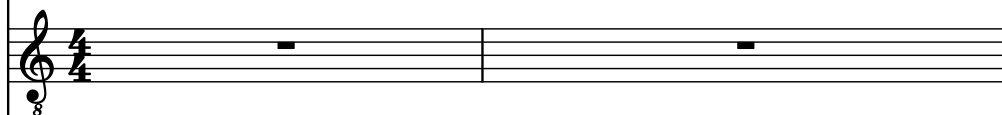
Bass Synthesizer, untitled



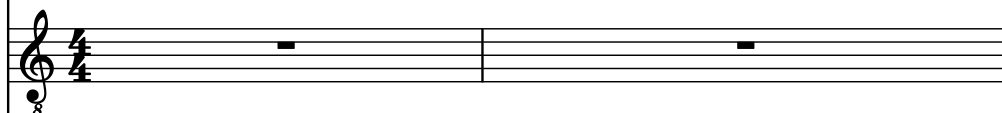
Piano



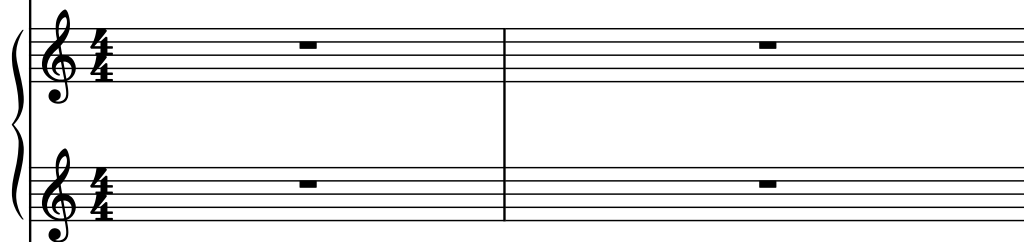
Electric Guitar



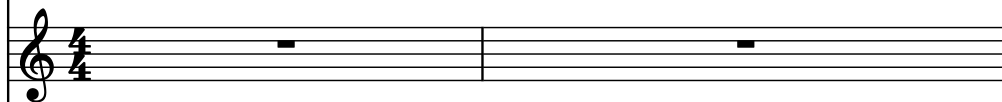
Electric Guitar



String Synthesizer



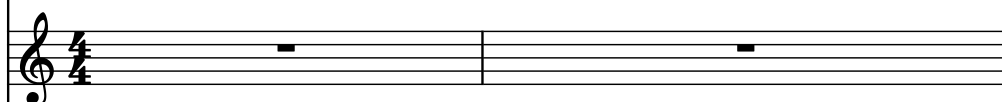
Violins



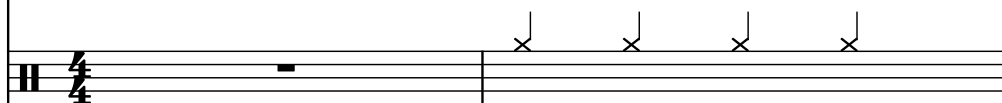
Brass



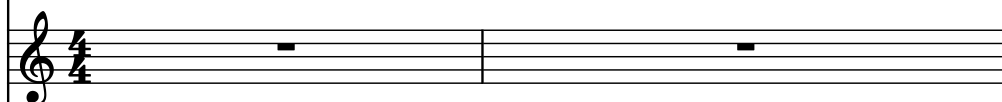
Alto Saxophone



Drumset



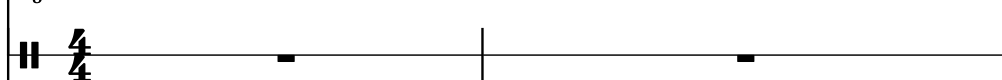
Percussive Organ



Electric Guitar



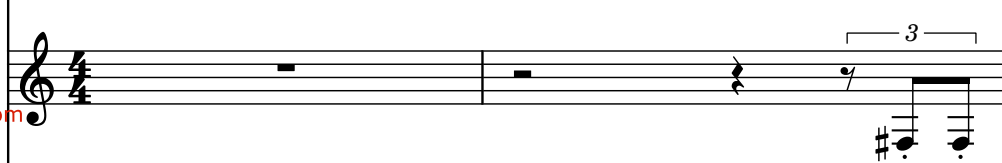
Concert Snare Drum



Voice



Voice



Pdf downloaded from www.midicities.com

4 ♩ = 128

4 ♩ = 128

Synth.

Pno.

El. Guit.

El. Guit.

Synth.

Vlins.

Br.

A. Sax.

D. Set

Perc. Org.

El. Guit.

Con. Sn.

Vo.

3

3

3

3

3

5

Synth.

Pno.

El. Guit.

El. Guit.

Synth.

Vlins.

Br.

A. Sax.

D. Set

Perc. Org.

El. Guit.

Con. Sn.

Vo.

Vo.

Downloaded from www.midcities.com

vo. 

Pdf downloaded from www.midicities.com

vs. 

Pdf downloaded from www.midicities.com

8

Synth.

Pno.

El. Guit.

El. Guit.

Synth.

Vlms.

Br.

A. Sax.

D. Set

Perc. Org.

El. Guit.

Con. Sn.

Vo.

Vo.

Downloaded from www.midcities.com

9

Synth.

Pno.

El. Guit.

El. Guit.

Synth.

Vlns.

Br.

A. Sax.

D. Set

Perc. Org.

El. Guit.

Con. Sn.

Vo.

Vo.

10

Synth.

Pno.

El. Guit.

El. Guit.

Synth.

Vlins.

Br.

A. Sax.

D. Set

Perc. Org.

El. Guit.

Con. Sn.

Vo.

Vo.

11

This page of the musical score, numbered 11, contains staves for the following instruments: Synth. (Bass), Pno. (Bass), El. Guit. (Treble), El. Guit. (Treble), Synth. (Treble, two staves), Vlins. (Treble), Br. (Treble), A. Sax. (Treble), D. Set (Percussion), Perc. Org. (Treble), El. Guit. (Treble), Con. Sn. (Percussion), Vo. (Treble), and Vo. (Treble). The score features a variety of musical notations, including eighth notes, quarter notes, and rests. Triplet markings (3) are present above the first and second El. Guit. staves, and above the Br. and A. Sax. staves. The D. Set staff includes complex rhythmic patterns with many beamed notes and rests. The Perc. Org. staff has a single note with a sharp sign. The Vo. staves are mostly empty, with a few notes at the end of the page. The page number 11 is located at the top left.

Synth.

Pno.

El. Guit.

El. Guit.

Synth.

Vlins.

Br.

A. Sax.

D. Set

Perc. Org.

El. Guit.

Con. Sn.

Vo.

Vo.

Downloaded from www.midicities.com

12

Synth.

Pno.

El. Guit.

El. Guit.

Synth.

Vlins.

Br.

A. Sax.

D. Set

Perc. Org.

El. Guit.

Con. Sn.

Vo.

Vo.

13

Synth.

Pno.

El. Guit.

El. Guit.

Synth.

Vlns.

Br.

A. Sax.

D. Set

Perc. Org.

El. Guit.

Con. Sn.

Vo.

Vo.

Downloaded from www.midcities.com

14

3

3

♩ = 129

3

Synth.

Pno.

El. Guit.

El. Guit.

Synth.

Vlins.

Br.

A. Sax.

D. Set

Perc. Org.

El. Guit.

Con. Sn.

Vo.

Vo.

15

Synth.

Pno.

El. Guit.

El. Guit.

Synth.

Vlins.

Br.

A. Sax.

D. Set

Perc. Org.

El. Guit.

Con. Sn.

Vo.

Vo.

Downloaded from www.midcities.com

16 $\text{♩} = 128$

Synth.

Pno.

El. Guit.

El. Guit.

Synth.

Vlns.

Br.

A. Sax.

D. Set

Perc. Org.

El. Guit.

Con. Sn.

Vo.

Vo.

17

Synth.

Pno.

El. Guit.

El. Guit.

Synth.

Vlins.

Br.

A. Sax.

D. Set

Perc. Org.

El. Guit.

Con. Sn.

Vo.

Vo.

Downloaded from www.midcities.com

18 $\text{♩} = 129$

Synth.

Pno.

El. Guit.

El. Guit.

Synth.

Vlins.

Br.

A. Sax.

D. Set

Perc. Org.

El. Guit.

Con. Sn.

Vo.

Vo.

19

Synth.

Pno.

El. Guit.

El. Guit.

Synth.

Vlns.

Br.

A. Sax.

D. Set

Perc. Org.

El. Guit.

Con. Sn.

Vo.

Vo.

Downloaded from www.midcities.com

20

Synth.

Pno.

El. Guit.

El. Guit.

Synth.

Vlns.

Br.

A. Sax.

D. Set

Perc. Org.

El. Guit.

Con. Sn.

Vo.

Vo.

Downloaded from www.midcities.com

21 $\text{♩} = 128$

Synth.

Pno.

El. Guit.

El. Guit.

Synth.

Vlins.

Br.

A. Sax.

D. Set

Perc. Org.

El. Guit.

Con. Sn.

Vo.

Vo.

Downloaded from www.midicities.com

Vo.

23 $\text{♩} = 129$

Synth.

Pno.

El. Guit.

El. Guit.

Synth.

Vlms.

Br.

A. Sax.

D. Set

Perc. Org.

El. Guit.

Con. Sn.

Vo.

Vo.

23 $\text{♩} = 129$

24

24

Synth.

Pno.

El. Guit.

El. Guit.

Synth.

Vlins.

Br.

A. Sax.

D. Set

Perc. Org.

El. Guit.

Con. Sn.

Vo.

Vo.

25 $\text{♩} = 128$

Synth.

Pno.

El. Guit.

El. Guit.

Synth.

Vlins.

Br.

A. Sax.

D. Set

Perc. Org.

El. Guit.

Con. Sn.

Vo.

Vo.

3 3 3

26

Synth.

Pno.

El. Guit.

El. Guit.

Synth.

Vlins.

Br.

A. Sax.

D. Set

Perc. Org.

El. Guit.

Con. Sn.

Vo.

Vo.

27

Synth.

Pno.

El. Guit.

El. Guit.

Synth.

Vlins.

Br.

A. Sax.

D. Set

Perc. Org.

El. Guit.

Con. Sn.

Vo.

Vo.

Downloaded from www.midcities.com

28

Synth.

Pno.

El. Guit.

El. Guit.

Synth.

Vlins.

Br.

A. Sax.

D. Set

Perc. Org.

El. Guit.

Con. Sn.

Vo.

Vo.

29

Synth.

Pno.

El. Guit.

El. Guit.

Synth.

Vlins.

Br.

A. Sax.

D. Set

Perc. Org.

El. Guit.

Con. Sn.

Vo.

Vo.

Downloaded from www.midcities.com

30

Synth.

Pno.

El. Guit.

El. Guit.

Synth.

Vlins.

Br.

A. Sax.

D. Set

Perc. Org.

El. Guit.

Con. Sn.

Vo.

Vo.

31

Synth.

Pno.

El. Guit.

El. Guit.

Synth.

Vlins.

Br.

A. Sax.

D. Set

Perc. Org.

El. Guit.

Con. Sn.

Vo.

Vo.

Downloaded from www.midcities.com

32 $\text{♩} = 127$

Synth.

Pno.

El. Guit.

El. Guit.

Synth.

Vlms.

Br.

A. Sax.

D. Set

Perc. Org.

El. Guit.

Con. Sn.

Vo.

Vo.

33

Synth.

Pno.

El. Guit.

El. Guit.

Synth.

Vlins.

Br.

A. Sax.

D. Set

Perc. Org.

El. Guit.

Con. Sn.

Vo.

Vo.

Downloaded from www.midi-cities.com

34

Synth.

Pno.

El. Guit.

El. Guit.

Synth.

Vlins.

Br.

A. Sax.

D. Set

Perc. Org.

El. Guit.

Con. Sn.

Vo.

Vo.

35

Synth.

Pno.

El. Guit.

El. Guit.

Synth.

Vlins.

Br.

A. Sax.

D. Set

Perc. Org.

El. Guit.

Con. Sn.

Vo.

Vo.

Downloaded from www.midi-cities.com

Pdf downloaded from www.midicities.com

37

Synth.

Pno.

El. Guit.

El. Guit.

Synth.

Vlins.

Br.

A. Sax.

D. Set

Perc. Org.

El. Guit.

Con. Sn.

Vo.

Vo.

Downloaded from www.midcities.com

38 3 3 ♩ = 129 3 37

Synth.

Pno.

El. Guit.

El. Guit.

Synth.

Vlms.

Br.

A. Sax.

D. Set

Perc. Org.

El. Guit.

Con. Sn.

Vo.

Vo.

Pdf downloaded from www.midicities.com

40

Synth.

Pno.

El. Guit.

El. Guit.

Synth.

Vlns.

Br.

A. Sax.

D. Set

Perc. Org.

El. Guit.

Con. Sn.

Vo.

Vo.

41

Synth.

Pno.

El. Guit.

El. Guit.

Synth.

Vlins.

Br.

A. Sax.

D. Set

Perc. Org.

El. Guit.

Con. Sn.

Vo.

Vo.

Downloaded from www.midicities.com

Pdf downloaded from www.midicities.com

Pdf downloaded from www.midicities.com

44

Synth.

Pno.

El. Guit.

El. Guit.

Synth.

Vlins.

Br.

A. Sax.

D. Set

Perc. Org.

El. Guit.

Con. Sn.

Vo.

Vo.

The musical score for page 43 begins at measure 44. The instrumentation includes Synth., Pno., El. Guit., Vlins., Br., A. Sax., D. Set, Perc. Org., and Vo. The score is written in a complex style with many triplets and slurs. The Synth. part has a triplet of eighth notes in the first measure, followed by a triplet of eighth notes in the second measure, and a triplet of eighth notes in the third measure. The Pno. part has a triplet of eighth notes in the first measure, followed by a triplet of eighth notes in the second measure, and a triplet of eighth notes in the third measure. The El. Guit. part has a triplet of eighth notes in the first measure, followed by a triplet of eighth notes in the second measure, and a triplet of eighth notes in the third measure. The Vlins. part has a triplet of eighth notes in the first measure, followed by a triplet of eighth notes in the second measure, and a triplet of eighth notes in the third measure. The Br. part has a triplet of eighth notes in the first measure, followed by a triplet of eighth notes in the second measure, and a triplet of eighth notes in the third measure. The A. Sax. part has a triplet of eighth notes in the first measure, followed by a triplet of eighth notes in the second measure, and a triplet of eighth notes in the third measure. The D. Set part has a triplet of eighth notes in the first measure, followed by a triplet of eighth notes in the second measure, and a triplet of eighth notes in the third measure. The Perc. Org. part has a triplet of eighth notes in the first measure, followed by a triplet of eighth notes in the second measure, and a triplet of eighth notes in the third measure. The El. Guit. part has a triplet of eighth notes in the first measure, followed by a triplet of eighth notes in the second measure, and a triplet of eighth notes in the third measure. The Con. Sn. part has a triplet of eighth notes in the first measure, followed by a triplet of eighth notes in the second measure, and a triplet of eighth notes in the third measure. The Vo. part has a triplet of eighth notes in the first measure, followed by a triplet of eighth notes in the second measure, and a triplet of eighth notes in the third measure.

45 $\text{♩} = 128$

Synth.

Pno.

El. Guit.

El. Guit.

Synth.

Vlns.

Br.

A. Sax.

D. Set

Perc. Org.

El. Guit.

Con. Sn.

Vo.

Vo.

45

46

47

48

46

Synth.

Pno.

El. Guit.

El. Guit.

Synth.

Vlins.

Br.

A. Sax.

D. Set

Perc. Org.

El. Guit.

Con. Sn.

Vo.

Vo.

Downloaded from www.midcities.com

47 $\text{♩} = 129$

Synth.

Pno.

El. Guit.

El. Guit.

Synth.

Vlns.

Br.

A. Sax.

D. Set

Perc. Org.

El. Guit.

Con. Sn.

Vo.

Vo.

The musical score for page 46, measures 47-50, is presented in a multi-staff format. The tempo is marked as 129 BPM. The key signature has one sharp (F#). The score includes parts for Synth., Pno., El. Guit., Synth., Vlns., Br., A. Sax., D. Set, Perc. Org., El. Guit., Con. Sn., Vo., and Vo. The score features various musical notations including triplets, slurs, and dynamic markings.

48

Synth.

Pno.

El. Guit.

El. Guit.

Synth.

Vlns.

Br.

A. Sax.

D. Set

Perc. Org.

El. Guit.

Con. Sn.

Vo.

Vo.

Downloaded from www.midcities.com

49 ♩ = 128

Synth. 3 3

Pno.

El. Guit.

El. Guit.

Synth.

Vlns.

Br.

A. Sax.

D. Set

Perc. Org.

El. Guit.

Con. Sn.

Vo.

Vo.

Downloaded from www.midcities.com

50

The musical score for page 50 features the following instruments and parts:

- Synth.**: Bass clef, featuring a triplet of eighth notes (F4, G4, A4) followed by a half note (B4) and a whole note (C5).
- Pno.**: Bass clef, featuring a whole rest.
- El. Guit.**: Treble clef, featuring a whole rest.
- El. Guit.**: Treble clef, featuring a triplet of eighth notes (F4, G4, A4) followed by a half note (B4) and a whole note (C5).
- Synth.**: Treble and Bass clefs, featuring whole rests.
- Vlns.**: Treble clef, featuring a whole rest.
- Br.**: Treble clef, featuring a whole rest.
- A. Sax.**: Treble clef, featuring a whole rest.
- D. Set**: Treble clef, featuring a complex rhythmic pattern with triplets and sixteenth notes.
- Perc. Org.**: Treble clef, featuring a large sustained organ sound.
- El. Guit.**: Treble clef, featuring a whole rest.
- Con. Sn.**: Treble clef, featuring a whole rest.
- Vo.**: Treble clef, featuring a whole rest.
- Vo.**: Treble clef, featuring a whole rest.

51

Synth.

Pno.

El. Guit.

El. Guit.

Synth.

Vlins.

Br.

A. Sax.

D. Set

Perc. Org.

El. Guit.

Con. Sn.

Vo.

Vo.

Downloaded from www.midcities.com

52

Synth.

Pno.

El. Guit.

El. Guit.

Synth.

Vlins.

Br.

A. Sax.

D. Set

Perc. Org.

El. Guit.

Con. Sn.

Vo.

Vo.

53

Synth.

Pno.

El. Guit.

El. Guit.

Synth.

Vlins.

Br.

A. Sax.

D. Set

Perc. Org.

El. Guit.

Con. Sn.

Vo.

Vo.

Pdf downloaded from www.midicities.com

55

Synth.

Pno.

El. Guit.

El. Guit.

Synth.

Vlins.

Br.

A. Sax.

D. Set

Perc. Org.

El. Guit.

Con. Sn.

Vo.

Vo.

Downloaded from www.midcities.com

56

Synth.

Pno.

El. Guit.

El. Guit.

Synth.

Vlins.

Br.

A. Sax.

D. Set

Perc. Org.

El. Guit.

Con. Sn.

Vo.

Vo.

Downloaded from www.midcities.com

57

Synth.

Pno.

El. Guit.

El. Guit.

Synth.

Vlins.

Br.

A. Sax.

D. Set

Perc. Org.

El. Guit.

Con. Sn.

Vo.

Vo.

3

58

Synth.

Pno.

El. Guit.

El. Guit.

Synth.

Vlins.

Br.

A. Sax.

D. Set

Perc. Org.

El. Guit.

Con. Sn.

Vo.

Vo.

Downloaded from www.midcities.com

Vo. Pdf downloaded from www.midicities.com

60

60

Synth.

Pno.

El. Guit.

El. Guit.

Synth.

Vlins.

Br.

A. Sax.

D. Set

Perc. Org.

El. Guit.

Con. Sn.

Vo.

Vo.

Downloaded from www.mididict.com

61 $\text{♩} = 128$

Synth.

Pno.

El. Guit.

El. Guit.

Synth.

Vlms.

Br.

A. Sax.

D. Set

Perc. Org.

El. Guit.

Con. Sn.

Vo.

Vo.

61 $\text{♩} = 128$

62

Pdf downloaded from www.midi-cities.com

Pdf downloaded from www.midicities.com

Pdf downloaded from www.midicities.com

65

Synth.

Pno.

El. Guit.

El. Guit.

Synth.

Vlins.

Br.

A. Sax.

D. Set

Perc. Org.

El. Guit.

Con. Sn.

Vo.

Vo.

Downloaded from www.midcities.com

66

Synth.

Pno.

El. Guit.

El. Guit.

Synth.

Vlins.

Br.

A. Sax.

D. Set

Perc. Org.

El. Guit.

Con. Sn.

Vo.

Vo.

67

Synth.

Pno.

El. Guit.

El. Guit.

Synth.

Vlins.

Br.

A. Sax.

D. Set

Perc. Org.

El. Guit.

Con. Sn.

Vo.

Vo.

Downloaded from www.midcities.com

68

68

Synth.

Pno.

El. Guit.

El. Guit.

Synth.

Vlns.

Br.

A. Sax.

D. Set

Perc. Org.

El. Guit.

Con. Sn.

Vo.

Vo.

Downloaded from www.midcities.com

69

Synth.

Pno.

El. Guit.

El. Guit.

Synth.

Vlins.

Br.

A. Sax.

D. Set

Perc. Org.

El. Guit.

Con. Sn.

Vo.

Vo.

Downloaded from www.midcities.com

70

This page of the musical score for 'The Dark Knight Returns' contains measures 70 through 72. The score is written for a large ensemble, including Synthesizer, Piano, Electric Guitars, Violins, Brass, Alto Saxophone, Drums, Percussion Organ, and Voice. Measure 70 features a complex arrangement with a synthesizer line in the bass clef, piano accompaniment, and electric guitar parts. The alto saxophone and drums have active parts, while the percussion organ and voice are silent. Measure 71 is a continuation of the previous measure. Measure 72 shows the voice entering with a triplet of eighth notes. The score is written in a standard musical notation style with various clefs, time signatures, and musical symbols.

Synth.

Pno.

El. Guit.

El. Guit.

Synth.

Vlns.

Br.

A. Sax.

D. Set

Perc. Org.

El. Guit.

Con. Sn.

Vo.

Vo.

Downloaded from www.midcities.com

Vo

72

Synth.

Pno.

El. Guit.

El. Guit.

Synth.

Vlns.

Br.

A. Sax.

D. Set

Perc. Org.

El. Guit.

Con. Sn.

Vo.

Vo.

Pdf downloaded from www.midicities.com

74

Synth.

Pno.

El. Guit.

El. Guit.

Synth.

Vlins.

Br.

A. Sax.

D. Set

Perc. Org.

El. Guit.

Con. Sn.

Vo.

Vo.

74

75

76

77

78

79

80

81

82

83

84

85

86

87

88

89

90

91

92

93

94

95

96

97

98

99

100

101

102

103

104

105

106

107

108

109

110

111

112

113

114

115

116

117

118

119

120

121

122

123

124

125

126

127

128

129

130

131

132

133

134

135

136

137

138

139

140

141

142

143

144

145

146

147

148

149

150

151

152

153

154

155

156

157

158

159

160

161

162

163

164

165

166

167

168

169

170

171

172

173

174

175

176

177

178

179

180

181

182

183

184

185

186

187

188

189

190

191

192

193

194

195

196

197

198

199

200

201

202

203

204

205

206

207

208

209

210

211

212

213

214

215

216

217

218

219

220

221

222

223

224

225

226

227

228

229

230

231

232

233

234

235

236

237

238

239

240

241

242

243

244

245

246

247

248

249

250

251

252

253

254

255

256

257

258

259

260

261

262

263

264

265

266

267

268

269

270

271

272

273

274

275

276

277

278

279

280

281

282

283

284

285

286

287

288

289

290

291

292

293

294

295

296

297

298

299

300

301

302

303

304

305

306

307

308

309

310

311

312

313

314

315

316

317

318

319

320

321

322

323

324

325

326

327

328

329

330

331

332

333

334

335

336

337

338

339

340

341

342

343

344

345

346

347

348

349

350

351

352

353

354

355

356

357

358

359

360

361

362

363

364

365

366

367

368

369

370

371

372

373

374

375

376

377

378

379

380

381

382

383

384

385

386

387

388

389

390

391

392

393

394

395

396

397

398

399

400

401

402

403

404

405

406

407

408

409

410

411

412

413

414

415

416

417

418

419

420

421

422

423

424

425

426

427

428

429

430

431

432

433

434

435

436

437

438

439

440

441

442

443

444

445

446

447

448

449

450

451

452

453

454

455

456

457

458

459

460

461

462

463

464

465

466

467

468

469

470

471

472

473

474

475

476

477

478

479

480

481

482

483

484

485

486

487

488

489

490

491

492

493

494

495

496

497

498

499

500

501

502

503

504

505

506

507

508

509

510

511

512

513

514

515

516

517

518

519

520

521

522

523

524

525

526

527

528

529

530

531

532

533

534

535

536

537

538

539

540

541

542

543

544

545

546

547

548

549

550

551

552

553

554

555

556

557

558

559

560

561

562

563

564

565

566

567

568

569

570

571

572

573

574

575

576

577

578

579

580

581

582

583

584

585

586

587

588

589

590

591

592

593

594

595

596

597

598

599

600

601

602

603

604

605

606

607

608

609

610

611

612

613

614

615

616

617

618

619

620

621

622

623

624

625

626

627

628

629

630

631

632

633

634

635

636

637

638

639

640

641

642

643

644

645

646

647

648

649

650

651

652

653

654

655

656

657

658

659

660

661

662

663

664

665

666

667

668

669

670

671

672

673

674

675

676

677

678

679

680

681

682

683

684

685

686

687

688

689

690

691

692

693

694

695

696

697

698

699

700

701

702

703

704

705

706

707

708

709

710

711

712

713

714

715

716

717

718

719

720

721

722

723

724

725

726

727

728

729

730

731

732

733

734

735

736

737

738

739

740

741

742

743

744

745

746

747

748

749

750

751

752

753

754

755

756

757

758

759

760

761

762

763

764

765

766

767

768

769

770

771

772

773

774

775

776

777

778

779

780

781

782

783

784

785

786

787

788

789

790

791

792

793

794

795

796

797

798

799

800

801

802

803

804

805

806

807

808

809

810

811

812

813

814

815

816

817

818

819

820

821

822

823

824

825

826

827

828

829

830

831

832

833

834

835

836

837

838

839

840

841

842

843

844

845

846

847

848

849

850

851

852

853

854

855

856

857

858

859

860

861

862

863

864

865

866

867

868

869

870

871

872

873

874

875

876

877

878

879

880

881

882

883

884

885

886

887

888

889

890

891

892

893

894

895

896

897

898

899

900

901

902

903

904

905

906

907

908

909

910

911

912

913

914

915

916

917

918

919

920

921

922

923

924

925

926

927

928

929

930

931

932

933

934

935

936

937

938

939

940

941

942

943

944

945

946

947

948

949

950

951

952

953

954

955

956

957

958

959

960

961

962

963

964

965

966

967

968

969

970

971

972

973

974

975

976

977

978

979

980

981

982

983

984

985

986

987

988

989

990

991

992

993

994

995

996

997

998

999

1000

75 $\text{♩} = 127$

Synth.

Pno.

El. Guit.

El. Guit.

Synth.

Vlins.

Br.

A. Sax.

D. Set

Perc. Org.

El. Guit.

Con. Sn.

Vo.

Vo.

75 $\text{♩} = 127$

76

77

78

76

Synth.

Pno.

El. Guit.

El. Guit.

Synth.

Vlins.

Br.

A. Sax.

D. Set

Perc. Org.

El. Guit.

Con. Sn.

Vo.

Vo.

77

Synth.

Pno.

El. Guit.

El. Guit.

Synth.

Vlns.

Br.

A. Sax.

D. Set

Perc. Org.

El. Guit.

Con. Sn.

Vo.

Vo.

Downloaded from www.midcities.com

78

Synth.

Pno.

El. Guit.

El. Guit.

Synth.

Vlns.

Br.

A. Sax.

D. Set

Perc. Org.

El. Guit.

Con. Sn.

Vo.

Vo.

Downloaded from www.midicities.com

79

Synth.

Pno.

El. Guit.

El. Guit.

Synth.

Vlins.

Br.

A. Sax.

D. Set

Perc. Org.

El. Guit.

Con. Sn.

Vo.

Vo.

Downloaded from www.midcities.com

80

Synth.

Pno.

El. Guit.

El. Guit.

Synth.

Vlns.

Br.

A. Sax.

D. Set

Perc. Org.

El. Guit.

Con. Sn.

Vo.

Vo.

Downloaded from www.midcities.com

81 $\text{♩} = 128$

Synth.

Pno.

El. Guit.

El. Guit.

Synth.

Vlins.

Br.

A. Sax.

D. Set

Perc. Org.

El. Guit.

Con. Sn.

Vo.

Vo.

82

Synth.

Pno.

El. Guit.

El. Guit.

Synth.

Vlins.

Br.

A. Sax.

D. Set

Perc. Org.

El. Guit.

Con. Sn.

Vo.

Vo.

Downloaded from www.midicities.com

83

Synth.

Pno.

El. Guit.

El. Guit.

Synth.

Vlins.

Br.

A. Sax.

D. Set

Perc. Org.

El. Guit.

Con. Sn.

Vo.

Vo.

Downloaded from www.midcities.com

84

Synth.

Pno.

El. Guit.

El. Guit.

Synth.

Vlins.

Br.

A. Sax.

D. Set

Perc. Org.

El. Guit.

Con. Sn.

Vo.

Vo.

85

Synth.

Pno.

El. Guit.

El. Guit.

Synth.

Vlins.

Br.

A. Sax.

D. Set

Perc. Org.

El. Guit.

Con. Sn.

Vo.

Vo.

86 $\text{♩} = 129$

Synth.

Pno.

El. Guit.

El. Guit.

Synth.

Vlms.

Br.

A. Sax.

D. Set

Perc. Org.

El. Guit.

Con. Sn.

Vo.

Vo.

87

87

87

Synth.

Pno.

El. Guit.

El. Guit.

Synth.

Vlns.

Br.

A. Sax.

D. Set

Perc. Org.

El. Guit.

Con. Sn.

Vo.

Downloaded from www.mididiff.com

88

$\text{♩} = 128$

Synth.

Pno.

El. Guit.

El. Guit.

Synth.

Vlns.

Br.

A. Sax.

D. Set

Perc. Org.

El. Guit.

Con. Sn.

Vo.

Vo.

Downloaded from www.midcities.com

89

89

Synth.

Pno.

El. Guit.

El. Guit.

Synth.

Vlns.

Br.

A. Sax.

D. Set

Perc. Org.

El. Guit.

Con. Sn.

Vo.

Vo.

The musical score for page 89 features a variety of instruments. The Synth parts (top and middle) play a melodic line with a triplet of eighth notes. The Pno part plays a sustained chord. The El. Guit. parts (top and bottom) play a melodic line with a triplet of eighth notes. The Vlns. part plays a sustained chord. The Br. part plays a sustained chord. The A. Sax. part plays a melodic line with a triplet of eighth notes. The D. Set part plays a complex rhythmic pattern with triplets. The Perc. Org. part plays a sustained chord. The El. Guit. part (bottom) plays a melodic line with a triplet of eighth notes. The Con. Sn. part plays a sustained chord. The Vo. parts (top and bottom) play a melodic line with a triplet of eighth notes.

vo. 

Pdf downloaded from www.midicities.com

91

91

Synth.

Pno.

El. Guit.

El. Guit.

Synth.

Vlns.

Br.

A. Sax.

D. Set

Perc. Org.

El. Guit.

Con. Sn.

Vo.

Downloaded from www.midifities.com

92

$\text{♩} = 129$

Synth.

Pno.

El. Guit.

El. Guit.

Synth.

Vlns.

Br.

A. Sax.

D. Set

Perc. Org.

El. Guit.

Con. Sn.

Vo.

Vo.

93

93

Synth.

Pno.

El. Guit.

El. Guit.

Synth.

Vlns.

Br.

A. Sax.

D. Set

Perc. Org.

El. Guit.

Con. Sn.

Vo.

Downloaded from www.midisities.com

94 $\text{♩} = 128$

The musical score for page 94, measures 94-96, is as follows:

- Synth. (Bass):** Measures 94-96. Measure 94: Quarter note G2, half note F#2. Measure 95: Quarter note E2, half note D2. Measure 96: Quarter note C2, half note B1. Triplets are indicated over measures 94-96.
- Pno. (Treble):** Measures 94-96. Measure 94: Chord G2-A2-B2. Measure 95: Chord G#2-A2-B2. Measure 96: Chord G2-A2-B2. Triplets are indicated over measures 94-96.
- El. Guit. (Treble):** Measures 94-96. Measure 94: Chord G2-A2-B2. Measure 95: Chord G#2-A2-B2. Measure 96: Chord G2-A2-B2. Triplets are indicated over measures 94-96.
- Synth. (Treble):** Measures 94-96. Measure 94: Quarter note G2, half note F#2. Measure 95: Quarter note E2, half note D2. Measure 96: Quarter note C2, half note B1. Triplets are indicated over measures 94-96.
- Vlns. (Treble):** Measures 94-96. Measure 94: Chord G2-A2-B2. Measure 95: Chord G#2-A2-B2. Measure 96: Chord G2-A2-B2. Triplets are indicated over measures 94-96.
- Br. (Treble):** Measures 94-96. Measure 94: Chord G2-A2-B2. Measure 95: Chord G#2-A2-B2. Measure 96: Chord G2-A2-B2. Triplets are indicated over measures 94-96.
- A. Sax. (Treble):** Measures 94-96. Measure 94: Chord G2-A2-B2. Measure 95: Chord G#2-A2-B2. Measure 96: Chord G2-A2-B2. Triplets are indicated over measures 94-96.
- D. Set (Percussion):** Measures 94-96. Measure 94: Chord G2-A2-B2. Measure 95: Chord G#2-A2-B2. Measure 96: Chord G2-A2-B2. Triplets are indicated over measures 94-96.
- Perc. Org. (Treble):** Measures 94-96. Measure 94: Chord G2-A2-B2. Measure 95: Chord G#2-A2-B2. Measure 96: Chord G2-A2-B2. Triplets are indicated over measures 94-96.
- El. Guit. (Bass):** Measures 94-96. Measure 94: Chord G2-A2-B2. Measure 95: Chord G#2-A2-B2. Measure 96: Chord G2-A2-B2. Triplets are indicated over measures 94-96.
- Con. Sn. (Percussion):** Measures 94-96. Measure 94: Chord G2-A2-B2. Measure 95: Chord G#2-A2-B2. Measure 96: Chord G2-A2-B2. Triplets are indicated over measures 94-96.
- Vo. (Treble):** Measures 94-96. Measure 94: Chord G2-A2-B2. Measure 95: Chord G#2-A2-B2. Measure 96: Chord G2-A2-B2. Triplets are indicated over measures 94-96.
- Vo. (Bass):** Measures 94-96. Measure 94: Chord G2-A2-B2. Measure 95: Chord G#2-A2-B2. Measure 96: Chord G2-A2-B2. Triplets are indicated over measures 94-96.

Musical score for page 95, featuring various instruments. The score is written for a full band and includes the following parts:

- Synth. (Bass clef)
- Pno. (Bass clef)
- El. Guit. (Treble clef, 8va)
- El. Guit. (Treble clef, 8va)
- Synth. (Treble and Bass clefs)
- Vlns. (Treble clef)
- Br. (Treble clef)
- A. Sax. (Treble clef)
- D. Set (Drum set, with notation for snare, bass, and cymbals)
- Perc. Org. (Treble clef)
- El. Guit. (Treble clef, 8va)
- Con. Sn. (Contra Snare, with notation for snare and bass)
- Vo. (Vocal, Treble clef)
- Vo. (Vocal, Treble clef)

The score includes complex notation for the A. Sax. and D. Set parts, featuring triplets and sixteenth notes. The D. Set part includes notation for snare, bass, and cymbals. The Vo. parts are marked with 'x' symbols, indicating specific vocal entries or cues.

96

Musical score for page 96, featuring various instruments and vocal parts. The score is written for the following instruments:

- Synth.
- Pno.
- El. Guit.
- El. Guit.
- Synth.
- Vlins.
- Br.
- A. Sax.
- D. Set
- Perc. Org.
- El. Guit.
- Con. Sn.
- Vo.
- Vo.

The score includes various musical notations, including rests, notes, and complex rhythmic patterns. The D. Set part features a complex rhythmic pattern with many notes and rests. The Vo. parts include a melody with a triplet and a long note.

97

Synth.

Pno.

El. Guit.

El. Guit.

Synth.

Vlns.

Br.

A. Sax.

D. Set

Perc. Org.

El. Guit.

Con. Sn.

Vo.

Vo.

Downloaded from www.midcities.com

98

Score for page 98, featuring multiple instruments and vocal parts.

Instruments and Parts:

- Synth. (Bass Clef)
- Pno. (Bass Clef)
- El. Guit. (Treble Clef, 8va)
- El. Guit. (Treble Clef, 8va)
- Synth. (Treble and Bass Clefs)
- Vlns. (Treble Clef)
- Br. (Treble Clef)
- A. Sax. (Treble Clef)
- D. Set (Drum Set)
- Perc. Org. (Treble Clef)
- El. Guit. (Treble Clef, 8va)
- Con. Sn. (Drum)
- Vo. (Vocal, Treble Clef)
- Vo. (Vocal, Treble Clef)

Key Musical Elements:

- The **A. Sax.** part features a complex melodic line with triplets and sixteenth notes.
- The **D. Set** part includes a drum pattern with various rhythms and accents.
- The **Vo.** parts include vocal lines with triplets and other rhythmic markings.

Score for page 98, featuring multiple instruments and vocal parts.

99

Synth.

Pno.

El. Guit.

El. Guit.

Synth.

Vlins.

Br.

A. Sax.

D. Set

Perc. Org.

El. Guit.

Con. Sn.

Vo.

Vo.

The musical score for page 99 is arranged in a multi-staff format. The instruments and parts are listed on the left: Synth., Pno., El. Guit., El. Guit., Synth. (a pair of staves), Vlins., Br., A. Sax., D. Set, Perc. Org., El. Guit., Con. Sn., Vo., and Vo. The notation includes rests for most instruments, indicating they are silent for this measure. The A. Sax. part features a complex rhythmic pattern with triplets and sixteenth notes. The D. Set part has a similar complex pattern. The Perc. Org. part has a simple rhythmic pattern. The two vocal parts (Vo.) are at the bottom, featuring a melody with triplets and a key signature of one sharp (F#).

Pdf downloaded from www.midicities.com

Pdf downloaded from www.midicities.com

102

Musical score for page 102, featuring various instruments and vocal parts. The score is written for the following instruments:

- Synth. (Bass Clef)
- Pno. (Bass Clef)
- El. Guit. (Treble Clef, 8va)
- El. Guit. (Treble Clef, 8va)
- Synth. (Treble and Bass Clefs)
- Vlins. (Treble Clef)
- Br. (Treble Clef)
- A. Sax. (Treble Clef)
- D. Set (Drum Set)
- Perc. Org. (Treble Clef)
- El. Guit. (Treble Clef, 8va)
- Con. Sn. (Drum Set)
- Vo. (Vocal)
- Vo. (Vocal)

The score includes various musical notations, including rests, notes, and complex rhythmic patterns. The D. Set part features a complex rhythmic pattern with many notes and rests. The Vo. parts include a vocal line with a triplet and a vocal line with a triplet.

Pdf downloaded from www.midicities.com

104

Synth.

Pno.

El. Guit.

El. Guit.

Synth.

Vlns.

Br.

A. Sax.

D. Set

Perc. Org.

El. Guit.

Con. Sn.

Vo.

Vo.

The musical score for page 104 is arranged in a multi-staff format. The instruments and their parts are as follows:

- Synth. (top):** Bass clef, mostly rests.
- Pno.:** Bass clef, mostly rests.
- El. Guit. (first):** Treble clef, mostly rests.
- El. Guit. (second):** Treble clef, mostly rests.
- Synth. (middle):** Treble and Bass clefs. Treble part has triplets of eighth notes. Bass part has triplets of eighth notes.
- Vlns.:** Treble clef. Treble part has triplets of eighth notes.
- Br.:** Treble clef, mostly rests.
- A. Sax.:** Treble clef, mostly rests.
- D. Set:** Treble clef. Treble part has triplets of eighth notes.
- Perc. Org.:** Treble clef, mostly rests.
- El. Guit. (bottom):** Treble clef, mostly rests.
- Con. Sn.:** Treble clef, mostly rests.
- Vo. (top):** Treble clef, mostly rests.
- Vo. (bottom):** Treble clef, mostly rests.

At the bottom of the page, there is a red text watermark: "Pdf downloaded from www.midichiles.com".

105 $\text{♩} = 129$

Synth.

Pno.

El. Guit.

El. Guit.

Synth.

Vlins.

Br.

A. Sax.

D. Set

Perc. Org.

El. Guit.

Con. Sn.

Vo.

Vo.

105 $\text{♩} = 129$

Synth.

Pno.

El. Guit.

El. Guit.

Synth.

Vlins.

Br.

A. Sax.

D. Set

Perc. Org.

El. Guit.

Con. Sn.

Vo.

Vo.

106

Synth.

Pno.

El. Guit.

El. Guit.

Synth.

Vlins.

Br.

A. Sax.

D. Set

Perc. Org.

El. Guit.

Con. Sn.

Vo.

V.

Downloaded from www.midcities.com

107 $\text{♩} = 128$

Synth.

Pno.

El. Guit.

El. Guit.

Synth.

Vlins.

Br.

A. Sax.

D. Set

Perc. Org.

El. Guit.

Con. Sn.

Vo.

Vo.

108

Synth.

Pno.

El. Guit.

El. Guit.

Synth.

Vlins.

Br.

A. Sax.

D. Set

Perc. Org.

El. Guit.

Con. Sn.

Vo.

Vo.

Downloaded from www.midcities.com

109

Synth.

Pno.

El. Guit.

El. Guit.

Synth.

Vlins.

Br.

A. Sax.

D. Set

Perc. Org.

El. Guit.

Con. Sn.

Vo.

Vo.

Downloaded from www.midcities.com

110

Synth.

Pno.

El. Guit.

El. Guit.

Synth.

Vlns.

Br.

A. Sax.

D. Set

Perc. Org.

El. Guit.

Con. Sn.

Vo.

Vo.

Downloaded from www.midcities.com

111

Synth.

Pno.

El. Guit.

El. Guit.

Synth.

Vlins.

Br.

A. Sax.

D. Set

Perc. Org.

El. Guit.

Con. Sn.

Vo.

Vo.

Downloaded from www.midcities.com

112

Synth.

Pno.

El. Guit.

El. Guit.

Synth.

Vlins.

Br.

A. Sax.

D. Set

Perc. Org.

El. Guit.

Con. Sn.

Vo.

Vo.

Downloaded from www.medicities.com

Musical score for page 113, featuring various instruments. The score is written in 4/4 time and includes the following parts:

- Synth.** (Bass Clef): Features a melodic line with a triplet of eighth notes in the final measure.
- Pno.** (Bass Clef): Features a complex melodic line with triplets and a triplet of eighth notes in the final measure.
- El. Guit.** (Treble Clef): Features a melodic line with a triplet of eighth notes in the final measure.
- El. Guit.** (Treble Clef): Features a melodic line with a triplet of eighth notes in the final measure.
- Synth.** (Treble and Bass Clefs): Features a melodic line with a triplet of eighth notes in the final measure.
- Vlns.** (Treble Clef): Features a melodic line with a triplet of eighth notes in the final measure.
- Br.** (Treble Clef): Features a melodic line with a triplet of eighth notes in the final measure.
- A. Sax.** (Treble Clef): Features a melodic line with a triplet of eighth notes in the final measure.
- D. Set** (Drum Set): Features a complex rhythmic pattern with triplets and a triplet of eighth notes in the final measure.
- Perc. Org.** (Treble Clef): Features a melodic line with a triplet of eighth notes in the final measure.
- El. Guit.** (Treble Clef): Features a melodic line with a triplet of eighth notes in the final measure.
- Con. Sn.** (Drum Set): Features a complex rhythmic pattern with triplets and a triplet of eighth notes in the final measure.
- Vo.** (Treble Clef): Features a melodic line with a triplet of eighth notes in the final measure.
- Vo.** (Treble Clef): Features a melodic line with a triplet of eighth notes in the final measure.

The score includes various musical notations such as triplets, eighth notes, and sixteenth notes. The key signature is one sharp (F#).

114

♩ = 127

Synth.

Pno.

El. Guit.

El. Guit.

Synth.

Vlins.

Br.

A. Sax.

D. Set

Perc. Org.

El. Guit.

Con. Sn.

Vo.

Vo.

Musical score for page 115, featuring various instruments. The score is written for the following instruments:

- Synth. (Bass clef)
- Pno. (Bass clef)
- El. Guit. (Treble clef)
- El. Guit. (Treble clef)
- Synth. (Treble and Bass clefs)
- Vlns. (Treble clef)
- Br. (Treble clef)
- A. Sax. (Treble clef)
- D. Set (Percussion clef)
- Perc. Org. (Treble clef)
- El. Guit. (Treble clef)
- Con. Sn. (Percussion clef)
- Vo. (Treble clef)
- Vo. (Treble clef)

The score includes various musical notations, including triplets, sixteenth notes, and rests. The D. Set part features a complex rhythmic pattern with triplets and sixteenth notes. The Perc. Org. part features a sustained chord. The Vo. parts feature a sustained chord.

116 ♩ = 125

116 ♩ = 125

Synth.

Pno.

El. Guit.

El. Guit.

Synth.

Vlns.

Br.

A. Sax.

D. Set

Perc. Org.

El. Guit.

Con. Sn.

Vo.

Vo.

Musical score for page 117, featuring various instruments. The score is written for measures 117 and 118. The instruments listed are Synth., Pno., El. Guit., El. Guit., Synth. (bass), Vlns., Br., A. Sax., D. Set, Perc. Org., El. Guit., Con. Sn., Vo., and Vo. The notation includes staves with clefs, notes, rests, and dynamic markings. The D. Set part features a complex rhythmic pattern in measure 117. The Perc. Org. part features a complex rhythmic pattern in measure 117. The Vo. parts feature a complex rhythmic pattern in measure 117.

Synth.

Pno.

El. Guit.

El. Guit.

Synth.

Vlns.

Br.

A. Sax.

D. Set

Perc. Org.

El. Guit.

Con. Sn.

Vo.

Vo.