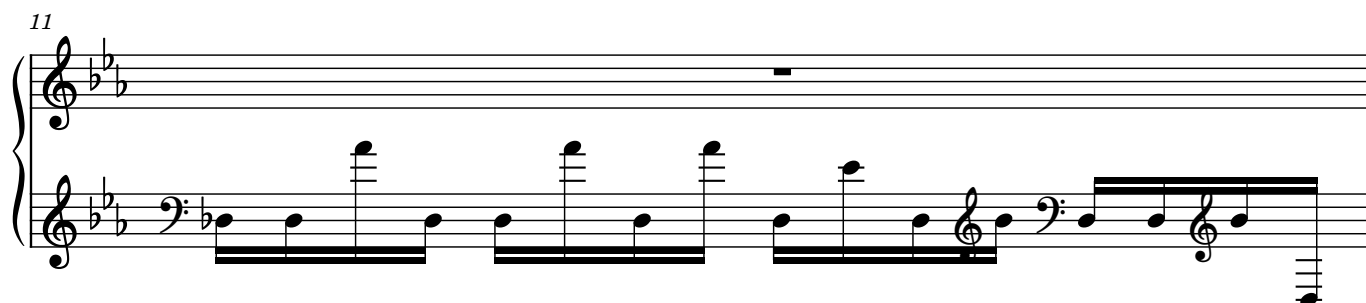
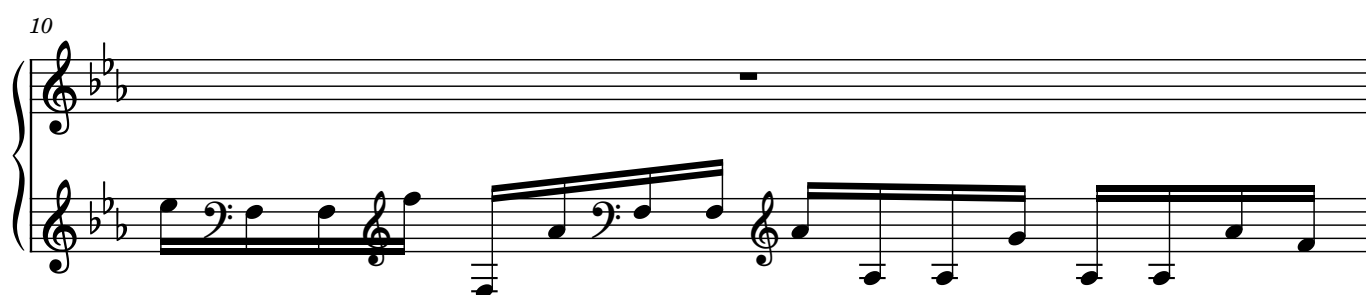
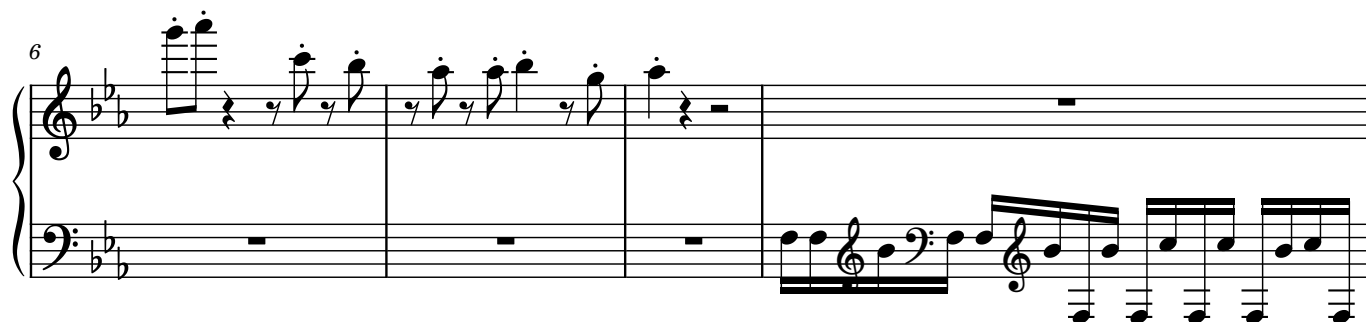
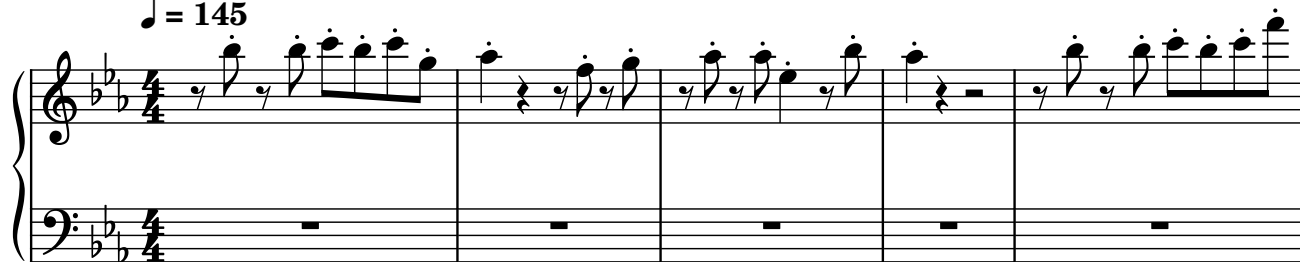


♩ = 145



14

Musical notation for measures 14 and 15. The key signature has three flats (B-flat, E-flat, A-flat). The right hand has a whole rest in measure 14 and a whole rest in measure 15. The left hand plays a sequence of eighth notes in measure 14, followed by a half note in measure 15, and then a series of eighth notes in measure 16.

15

Musical notation for measures 15 and 16. The key signature has three flats (B-flat, E-flat, A-flat). The right hand has a whole rest in measure 15 and a whole rest in measure 16. The left hand plays a sequence of eighth notes in measure 15, followed by a half note in measure 16, and then a series of eighth notes in measure 17.

16

Musical notation for measures 16 and 17. The key signature has three flats (B-flat, E-flat, A-flat). The right hand has a whole rest in measure 16 and a whole rest in measure 17. The left hand plays a sequence of eighth notes in measure 16, followed by a half note in measure 17, and then a series of eighth notes in measure 18.