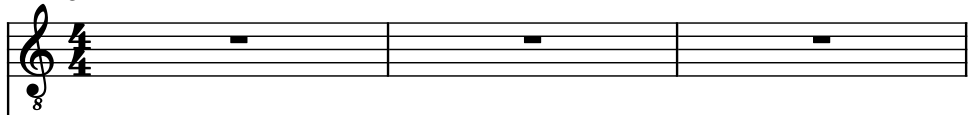
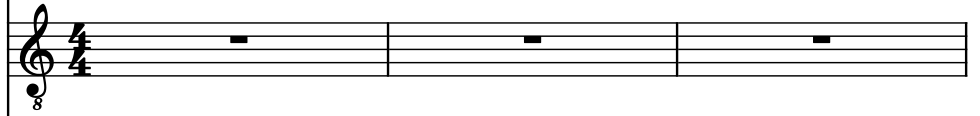


♩ = 148

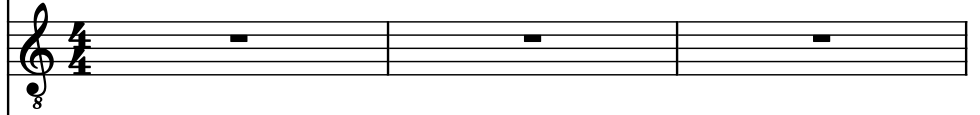
Electric Guitar, Alexi



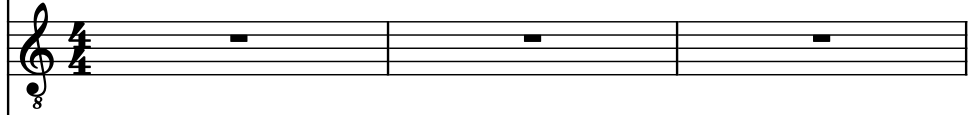
Electric Guitar



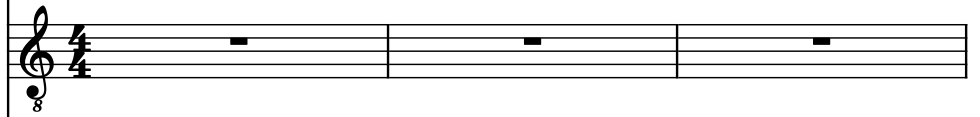
Electric Guitar, Ale



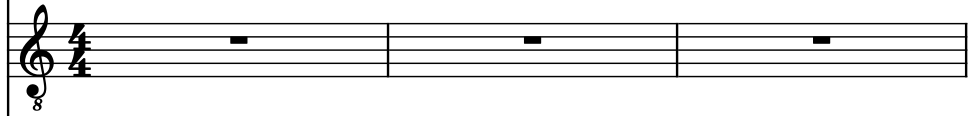
Electric Guitar



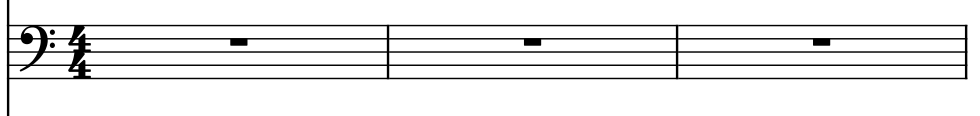
Electric Guitar, Alexi Lead



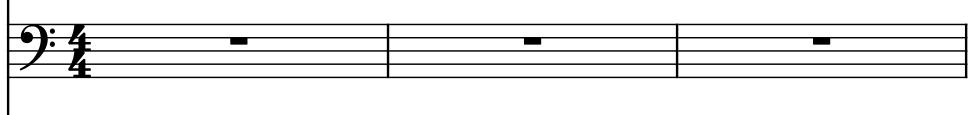
Electric Guitar



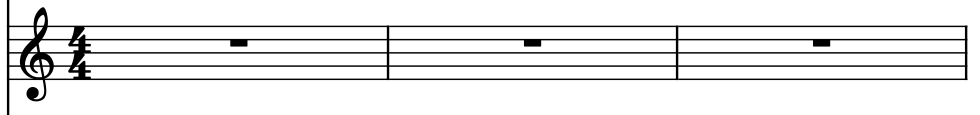
Bass Guitar, Henkka



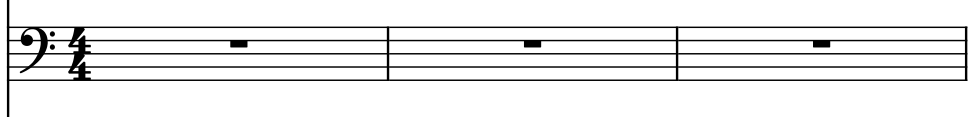
Bass Guitar



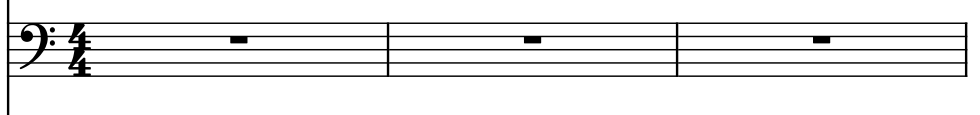
Strings, Janne



Square Synthesizer, Janne solo



Square Synthesizer



Drumset, Jaska



4

El. Guit.

El. Guit.

El. Guit.

El. Guit.

El. Guit.

El. Guit.

B. Guit.

B. Guit.

St.

Synth.

Synth.

D. Set

3

7

El. Guit.

El. Guit.

El. Guit.

El. Guit.

El. Guit.

El. Guit.

B. Guit.

B. Guit.

St.

Synth.

Synth.

D. Set

9

El. Guit.

El. Guit.

El. Guit.

El. Guit.

El. Guit.

El. Guit.

B. Guit.

B. Guit.

St.

Synth.

Synth.

D. Set

12

El. Guit.

El. Guit.

El. Guit.

El. Guit.

El. Guit.

El. Guit.

B. Guit.

B. Guit.

St.

Synth.

Synth.

D. Set

14

El. Guit.

El. Guit.

El. Guit.

El. Guit.

El. Guit.

El. Guit.

B. Guit.

B. Guit.

St.

Synth.

Synth.

D. Set

16

El. Guit.

El. Guit.

El. Guit.

El. Guit.

El. Guit.

El. Guit.

B. Guit.

B. Guit.

St.

Synth.

Synth.

D. Set

17

El. Guit.

El. Guit.

El. Guit.

El. Guit.

El. Guit.

El. Guit.

B. Guit.

B. Guit.

St.

Synth.

Synth.

D. Set



19

El. Guit. 8

El. Guit. 8

El. Guit. 8

El. Guit. 8

El. Guit. 8

El. Guit. 8

B. Guit.

B. Guit.

St.

Synth.

Synth.

D. Set

21

El. Guit.

El. Guit.

El. Guit.

El. Guit.

El. Guit.

El. Guit.

B. Guit.

B. Guit.

St.

Synth.

Synth.

D. Set

23

El. Guit.

El. Guit.

El. Guit.

El. Guit.

El. Guit.

El. Guit.

B. Guit.

B. Guit.

St.

Synth.

Synth.

D. Set

25

El. Guit.

El. Guit.

El. Guit.

El. Guit.

El. Guit.

El. Guit.

B. Guit.

B. Guit.

St.

Synth.

Synth.

D. Set

27

El. Guit.

El. Guit.

El. Guit.

El. Guit.

El. Guit.

El. Guit.

B. Guit.

B. Guit.

St.

Synth.

Synth.

D. Set

3

3

3

3

3

3

3

3

3

3

29

El. Guit.

El. Guit.

El. Guit.

El. Guit.

El. Guit.

El. Guit.

B. Guit.

B. Guit.

St.

Synth.

Synth.

D. Set

31

El. Guit. 8

El. Guit. 8

El. Guit. 8

El. Guit. 8

El. Guit. 8

El. Guit. 8

B. Guit.

B. Guit.

St.

Synth.

Synth.

D. Set

3

33

El. Guit.

El. Guit.

El. Guit.

El. Guit.

El. Guit.

El. Guit.

B. Guit.

B. Guit.

St.

Synth.

Synth.

D. Set

Detailed description: This musical score page contains measures 33, 34, and 35. The Electric Guitar (El. Guit.) part features a melodic line in measure 33, while the other four El. Guit. staves are silent. The Bass Guitar (B. Guit.) part has a single note in measure 33 and a melodic line in measure 34. The String (St.) part provides harmonic support with chords in measures 33 and 35. Both Synthesizer (Synth.) parts are silent. The Drum Set (D. Set) part features a consistent rhythmic pattern of eighth notes and rests across all three measures.



36

El. Guit. 1

El. Guit. 2

El. Guit. 3

El. Guit. 4

El. Guit. 5

El. Guit. 6

B. Guit. 1

B. Guit. 2

St.

Synth. 1

Synth. 2

D. Set

3

38

El. Guit.

El. Guit.

El. Guit.

El. Guit.

El. Guit.

El. Guit.

B. Guit.

B. Guit.

St.

Synth.

Synth.

D. Set

The musical score for page 18, measures 38-41, is arranged as follows:

- Measure 38:** El. Guit. 1, 3, and B. Guit. 1 have active parts. El. Guit. 2, 4, 5, 6, B. Guit. 2, St., Synth. 1, and Synth. 2 are at rest.
- Measure 39:** El. Guit. 1, 3, and B. Guit. 1 have active parts. El. Guit. 2, 4, 5, 6, B. Guit. 2, St., Synth. 1, and Synth. 2 are at rest.
- Measure 40:** El. Guit. 1, 3, and B. Guit. 1 have active parts. El. Guit. 2, 4, 5, 6, B. Guit. 2, St., Synth. 1, and Synth. 2 are at rest.
- Measure 41:** El. Guit. 1, 3, and B. Guit. 1 have active parts. El. Guit. 2, 4, 5, 6, B. Guit. 2, St., Synth. 1, and Synth. 2 are at rest.

40

El. Guit.

El. Guit.

El. Guit.

El. Guit.

El. Guit.

El. Guit.

B. Guit.

B. Guit.

St.

Synth.

Synth.

D. Set

43

El. Guit.

El. Guit.

El. Guit.

El. Guit.

El. Guit.

El. Guit.

B. Guit.

B. Guit.

St.

Synth.

Synth.

D. Set

47

El. Guit.

El. Guit.

El. Guit.

El. Guit.

El. Guit.

El. Guit.

B. Guit.

B. Guit.

St.

Synth.

Synth.

D. Set

51

El. Guit.

El. Guit.

El. Guit.

El. Guit.

El. Guit.

El. Guit.

B. Guit.

B. Guit.

St.

Synth.

Synth.

D. Set

55

El. Guit.

El. Guit.

El. Guit.

El. Guit.

El. Guit.

El. Guit.

B. Guit.

B. Guit.

St.

Synth.

Synth.

D. Set

59

El. Guit.

El. Guit.

El. Guit.

El. Guit.

El. Guit.

El. Guit.

B. Guit.

B. Guit.

St.

Synth.

Synth.

D. Set



62

El. Guit.

El. Guit.

El. Guit.

El. Guit.

El. Guit.

El. Guit.

B. Guit.

B. Guit.

St.

Synth.

Synth.

D. Set

64

El. Guit.

El. Guit.

El. Guit.

El. Guit.

El. Guit.

El. Guit.

B. Guit.

B. Guit.

St.

Synth.

Synth.

D. Set

66

El. Guit. 1: Treble clef, 8th notes, slurs, and accents.

El. Guit. 2: Treble clef, rests.

El. Guit. 3: Treble clef, 8th notes, slurs, and accents.

El. Guit. 4: Treble clef, rests.

El. Guit. 5: Treble clef, rests.

El. Guit. 6: Treble clef, rests.

B. Guit. 1: Bass clef, 8th notes, slurs, and accents.

B. Guit. 2: Bass clef, rests.

St.: Treble clef, chords and rests.

Synth. 1: Bass clef, rests.

Synth. 2: Bass clef, rests.

D. Set: Drum set notation with x's for cymbals and vertical strokes for drums.

68

El. Guit.

El. Guit.

El. Guit.

El. Guit.

El. Guit.

El. Guit.

B. Guit.

B. Guit.

St.

Synth.

Synth.

D. Set

70

El. Guit. 1: Treble clef, 8/8 time signature. Measures 70-71 contain eighth-note patterns. Measure 72 is a whole rest. Measure 73 contains eighth-note patterns.

El. Guit. 2: Treble clef, 8/8 time signature. Measures 70-71 and 72-73 contain whole rests.

El. Guit. 3: Treble clef, 8/8 time signature. Measures 70-71 contain eighth-note patterns. Measure 72 is a whole rest. Measure 73 contains eighth-note patterns.

El. Guit. 4: Treble clef, 8/8 time signature. Measures 70-71 and 72-73 contain whole rests.

El. Guit. 5: Treble clef, 8/8 time signature. Measures 70-71 and 72-73 contain whole rests.

El. Guit. 6: Treble clef, 8/8 time signature. Measures 70-71 and 72-73 contain whole rests.

B. Guit. 1: Bass clef. Measures 70-71 contain eighth-note patterns. Measure 72 is a whole rest. Measure 73 contains eighth-note patterns.

B. Guit. 2: Bass clef. Measures 70-71 and 72-73 contain whole rests.

St.: Treble clef. Measures 70-71 and 72-73 contain whole rests.

Synth. 1: Bass clef. Measures 70-71 and 72-73 contain whole rests.

Synth. 2: Bass clef. Measures 70-71 and 72-73 contain whole rests.

D. Set: Drum set notation. Measures 70-71 contain eighth-note patterns with a star symbol at the start of measure 70. Measure 72 is a whole rest. Measure 73 contains eighth-note patterns.

72

El. Guit.

El. Guit.

El. Guit.

El. Guit.

El. Guit.

El. Guit.

B. Guit.

B. Guit.

St.

Synth.

Synth.

D. Set



The musical score for page 30, measures 72-73, is arranged for a multi-instrument ensemble. The staves are as follows:

- El. Guit. (1-6):** Six staves for electric guitars. Measures 72 and 73 contain complex melodic lines with many beamed sixteenth and thirty-second notes. The first and third staves have a treble clef and a key signature of one flat (Bb). The second, fourth, fifth, and sixth staves have a treble clef and a key signature of one sharp (F#).
- B. Guit. (7-8):** Two staves for bass guitars. Measure 72 contains a melodic line with a key signature of one flat (Bb). Measure 73 contains a melodic line with a key signature of one sharp (F#).
- St. (9):** One staff for strings, which is empty in both measures.
- Synth. (10-11):** Two staves for synthesizers, which are empty in both measures.
- D. Set (12):** One staff for the drum set. It features a snare drum pattern (x) and a cymbal pattern (x) in both measures.

74

El. Guit. 1: Treble clef, 8/8 time signature. Measures 74-75: Active notation with eighth and sixteenth notes, including a key signature change to one flat. Measures 76-77: Rest.

El. Guit. 2: Treble clef, 8/8 time signature. Measures 74-75: Rest. Measures 76-77: Rest.

El. Guit. 3: Treble clef, 8/8 time signature. Measures 74-75: Active notation with eighth and sixteenth notes, including a key signature change to one flat. Measures 76-77: Rest.

El. Guit. 4: Treble clef, 8/8 time signature. Measures 74-75: Rest. Measures 76-77: Rest.

El. Guit. 5: Treble clef, 8/8 time signature. Measures 74-75: Rest. Measures 76-77: Rest.

El. Guit. 6: Treble clef, 8/8 time signature. Measures 74-75: Rest. Measures 76-77: Rest.

B. Guit. 1: Bass clef. Measures 74-75: Active notation with eighth notes. Measures 76-77: Rest.

B. Guit. 2: Bass clef. Measures 74-75: Rest. Measures 76-77: Rest.

St.: Treble clef. Measures 74-75: Rest. Measures 76-77: Rest.

Synth. 1: Bass clef. Measures 74-75: Rest. Measures 76-77: Rest.

Synth. 2: Bass clef. Measures 74-75: Rest. Measures 76-77: Rest.

D. Set: Drum set notation. Measures 74-75: Active notation with eighth and sixteenth notes. Measures 76-77: Rest.

76

El. Guit.

El. Guit.

El. Guit.

El. Guit.

El. Guit.

El. Guit.

B. Guit.

B. Guit.

St.

Synth.

Synth.

D. Set



78

El. Guit.

El. Guit.

El. Guit.

El. Guit.

El. Guit.

El. Guit.

B. Guit.

B. Guit.

St.

Synth.

Synth.

D. Set

80

El. Guit.

El. Guit.

El. Guit.

El. Guit.

El. Guit.

El. Guit.

B. Guit.

B. Guit.

St.

Synth.

Synth.

D. Set

80

81

82

83

81

El. Guit.

El. Guit.

El. Guit.

El. Guit.

El. Guit.

El. Guit.

B. Guit.

B. Guit.

St.

Synth.

Synth.

D. Set

82

El. Guit.

El. Guit.

El. Guit.

El. Guit.

El. Guit.

El. Guit.

B. Guit.

B. Guit.

St.

Synth.

Synth.

D. Set

The musical score for page 36, measures 82-85, is as follows:

- Measure 82:** The first and third Electric Guitars play a sequence of eighth notes: C4, D4, E4, F4, G4, A4, B4, C5. The Bass Guitar plays a sequence of eighth notes: C3, D3, E3, F3, G3, A3, B3, C4. The Drum Set plays a pattern of eighth notes: C4, D4, E4, F4, G4, A4, B4, C5.
- Measure 83:** All instruments are at rest.
- Measure 84:** The first and third Electric Guitars play a sequence of eighth notes: C4, D4, E4, F4, G4, A4, B4, C5. The Bass Guitar plays a sequence of eighth notes: C3, D3, E3, F3, G3, A3, B3, C4. The Drum Set plays a pattern of eighth notes: C4, D4, E4, F4, G4, A4, B4, C5.
- Measure 85:** All instruments are at rest.

83

El. Guit.

El. Guit.

El. Guit.

El. Guit.

El. Guit.

El. Guit.

B. Guit.

B. Guit.

St.

Synth.

Synth.

D. Set

85

El. Guit.

El. Guit.

El. Guit.

El. Guit.

El. Guit.

El. Guit.

B. Guit.

B. Guit.

St.

Synth.

Synth.

D. Set

The musical score for page 38, measures 85-88, is as follows:

- Measure 85:** The first, third, and fifth staves (labeled 'El. Guit.') contain a melodic line starting on a low note, moving up stepwise, and then down. The sixth staff (labeled 'B. Guit.') contains a steady eighth-note bass line. The eleventh staff (labeled 'D. Set') shows a drum pattern with a snare hit on the first beat and a hi-hat pattern.
- Measure 86:** All staves except the first, third, fifth, and eleventh are empty, indicating rests for those instruments.
- Measure 87:** Similar to measure 85, the first, third, and fifth staves have the same melodic line. The sixth staff has the same bass line. The eleventh staff has the same drum pattern.
- Measure 88:** All staves except the first, third, fifth, and eleventh are empty, indicating rests for those instruments.

86

El. Guit.

El. Guit.

El. Guit.

El. Guit.

El. Guit.

El. Guit.

B. Guit.

B. Guit.

St.

Synth.

Synth.

D. Set

87

El. Guit.

El. Guit.

El. Guit.

El. Guit.

El. Guit.

El. Guit.

B. Guit.

B. Guit.

St.

Synth.

Synth.

D. Set

The musical score for page 40, measures 87 and 88, is presented below. The score is written for a multi-instrument ensemble. The Electric Guitars (El. Guit.) play a complex, fast-paced melody in the first measure, which continues in the second measure. The Bass Guitars (B. Guit.) play a steady eighth-note pattern. The Strings (St.), Synthesizers (Synth.), and Drum Set (D. Set) are mostly silent, with the Drum Set playing a simple pattern of eighth notes in the first measure and a more complex pattern in the second measure.



89

El. Guit.

El. Guit.

El. Guit.

El. Guit.

El. Guit.

El. Guit.

B. Guit.

B. Guit.

St.

Synth.

Synth.

D. Set

90

El. Guit.

El. Guit.

El. Guit.

El. Guit.

El. Guit.

El. Guit.

B. Guit.

B. Guit.

St.

Synth.

Synth.

D. Set

91

El. Guit. 8

El. Guit. 8

El. Guit. 8

El. Guit. 8

El. Guit. 8

El. Guit. 8

B. Guit.

B. Guit.

St.

Synth.

Synth.

D. Set

Detailed description: This musical score page, numbered 91, contains ten staves. The first six staves are for Electric Guitars (El. Guit.), each with a '8' indicating an octave shift. The first and third staves have melodic lines in the first measure, while the others have whole rests. The seventh staff is for Bass Guitars (B. Guit.), with a melodic line in the first measure. The eighth staff is for Bass Guitars (B. Guit.), with whole rests. The ninth staff is for Strings (St.), with whole rests. The tenth staff is for Synthesizers (Synth.), with whole rests. The eleventh staff is for Drums (D. Set), with a rhythmic pattern of eighth and sixteenth notes. The score is divided into two measures by a vertical bar line.

93

El. Guit.

El. Guit.

El. Guit.

El. Guit.

El. Guit.

El. Guit.

B. Guit.

B. Guit.

St.

Synth.

Synth.

D. Set

95

El. Guit.

El. Guit.

El. Guit.

El. Guit.

El. Guit.

El. Guit.

B. Guit.

B. Guit.

St.

Synth.

Synth.

D. Set

3

3

3

3

3

97

El. Guit.

El. Guit.

El. Guit.

El. Guit.

El. Guit.

El. Guit.

B. Guit.

B. Guit.

St.

Synth.

Synth.

D. Set

98

El. Guit.

El. Guit.

El. Guit.

El. Guit.

El. Guit.

El. Guit.

B. Guit.

B. Guit.

St.

Synth.

Synth.

D. Set

99

El. Guit. 8

El. Guit. 8

El. Guit. 8

El. Guit. 8

El. Guit. 8

El. Guit. 8

B. Guit.

B. Guit.

St.

Synth.

Synth.

D. Set



100

El. Guit.

El. Guit.

El. Guit.

El. Guit.

El. Guit.

El. Guit.

B. Guit.

B. Guit.

St.

Synth.

Synth.

D. Set

101

El. Guit.

El. Guit.

El. Guit.

El. Guit.

El. Guit.

El. Guit.

B. Guit.

B. Guit.

St.

Synth.

Synth.

D. Set

103

El. Guit.

El. Guit.

El. Guit.

El. Guit.

El. Guit.

El. Guit.

B. Guit.

B. Guit.

St.

Synth.

Synth.

D. Set

104

The musical score for page 104 consists of the following staves and parts:

- El. Guit. (Staff 1):** Treble clef, key signature of one sharp (F#). It begins with a whole note chord consisting of F#4 and A4.
- El. Guit. (Staff 2):** Treble clef, key signature of one sharp. It contains a whole rest.
- El. Guit. (Staff 3):** Treble clef, key signature of one sharp. It begins with a whole note chord consisting of F#4 and A4.
- El. Guit. (Staff 4):** Treble clef, key signature of one sharp. It contains a whole rest.
- El. Guit. (Staff 5):** Treble clef, key signature of one sharp. It features a complex melodic line starting with a quarter note F#4, followed by eighth notes G#4, A4, B4, and C#5. This is followed by a triplet of eighth notes (G#4, A4, B4) and a half note C#5 tied to the next measure.
- El. Guit. (Staff 6):** Treble clef, key signature of one sharp. It contains a whole rest.
- B. Guit. (Staff 7):** Bass clef. It begins with a quarter note F#2, followed by a half note G#2 tied to the next measure, and then a quarter note A2.
- B. Guit. (Staff 8):** Bass clef. It contains a whole rest.
- St. (Staff 9):** Bass clef. It begins with a quarter note F#2, followed by a half note G#2 tied to the next measure, and then a quarter note A2.
- Synth. (Staff 10):** Bass clef. It contains a whole rest.
- Synth. (Staff 11):** Bass clef. It contains a whole rest.
- D. Set (Staff 12):** Drum set notation. It features a pattern of eighth notes: F#2, G#2, A2, B2, C#3, D3, E3, F#3, G#3, A3, B3, C#4, D4, E4, F#4, G#4, A4, B4, C#5, D5, E5, F#5, G#5, A5, B5, C#6, D6, E6, F#6, G#6, A6, B6, C#7, D7, E7, F#7, G#7, A7, B7, C#8, D8, E8, F#8, G#8, A8, B8, C#9, D9, E9, F#9, G#9, A9, B9, C#10, D10, E10, F#10, G#10, A10, B10, C#11, D11, E11, F#11, G#11, A11, B11, C#12, D12, E12, F#12, G#12, A12, B12, C#13, D13, E13, F#13, G#13, A13, B13, C#14, D14, E14, F#14, G#14, A14, B14, C#15, D15, E15, F#15, G#15, A15, B15, C#16, D16, E16, F#16, G#16, A16, B16, C#17, D17, E17, F#17, G#17, A17, B17, C#18, D18, E18, F#18, G#18, A18, B18, C#19, D19, E19, F#19, G#19, A19, B19, C#20, D20, E20, F#20, G#20, A20, B20, C#21, D21, E21, F#21, G#21, A21, B21, C#22, D22, E22, F#22, G#22, A22, B22, C#23, D23, E23, F#23, G#23, A23, B23, C#24, D24, E24, F#24, G#24, A24, B24, C#25, D25, E25, F#25, G#25, A25, B25, C#26, D26, E26, F#26, G#26, A26, B26, C#27, D27, E27, F#27, G#27, A27, B27, C#28, D28, E28, F#28, G#28, A28, B28, C#29, D29, E29, F#29, G#29, A29, B29, C#30, D30, E30, F#30, G#30, A30, B30, C#31, D31, E31, F#31, G#31, A31, B31, C#32, D32, E32, F#32, G#32, A32, B32, C#33, D33, E33, F#33, G#33, A33, B33, C#34, D34, E34, F#34, G#34, A34, B34, C#35, D35, E35, F#35, G#35, A35, B35, C#36, D36, E36, F#36, G#36, A36, B36, C#37, D37, E37, F#37, G#37, A37, B37, C#38, D38, E38, F#38, G#38, A38, B38, C#39, D39, E39, F#39, G#39, A39, B39, C#40, D40, E40, F#40, G#40, A40, B40, C#41, D41, E41, F#41, G#41, A41, B41, C#42, D42, E42, F#42, G#42, A42, B42, C#43, D43, E43, F#43, G#43, A43, B43, C#44, D44, E44, F#44, G#44, A44, B44, C#45, D45, E45, F#45, G#45, A45, B45, C#46, D46, E46, F#46, G#46, A46, B46, C#47, D47, E47, F#47, G#47, A47, B47, C#48, D48, E48, F#48, G#48, A48, B48, C#49, D49, E49, F#49, G#49, A49, B49, C#50, D50, E50, F#50, G#50, A50, B50, C#51, D51, E51, F#51, G#51, A51, B51, C#52, D52, E52, F#52, G#52, A52, B52, C#53, D53, E53, F#53, G#53, A53, B53, C#54, D54, E54, F#54, G#54, A54, B54, C#55, D55, E55, F#55, G#55, A55, B55, C#56, D56, E56, F#56, G#56, A56, B56, C#57, D57, E57, F#57, G#57, A57, B57, C#58, D58, E58, F#58, G#58, A58, B58, C#59, D59, E59, F#59, G#59, A59, B59, C#60, D60, E60, F#60, G#60, A60, B60, C#61, D61, E61, F#61, G#61, A61, B61, C#62, D62, E62, F#62, G#62, A62, B62, C#63, D63, E63, F#63, G#63, A63, B63, C#64, D64, E64, F#64, G#64, A64, B64, C#65, D65, E65, F#65, G#65, A65, B65, C#66, D66, E66, F#66, G#66, A66, B66, C#67, D67, E67, F#67, G#67, A67, B67, C#68, D68, E68, F#68, G#68, A68, B68, C#69, D69, E69, F#69, G#69, A69, B69, C#70, D70, E70, F#70, G#70, A70, B70, C#71, D71, E71, F#71, G#71, A71, B71, C#72, D72, E72, F#72, G#72, A72, B72, C#73, D73, E73, F#73, G#73, A73, B73, C#74, D74, E74, F#74, G#74, A74, B74, C#75, D75, E75, F#75, G#75, A75, B75, C#76, D76, E76, F#76, G#76, A76, B76, C#77, D77, E77, F#77, G#77, A77, B77, C#78, D78, E78, F#78, G#78, A78, B78, C#79, D79, E79, F#79, G#79, A79, B79, C#80, D80, E80, F#80, G#80, A80, B80, C#81, D81, E81, F#81, G#81, A81, B81, C#82, D82, E82, F#82, G#82, A82, B82, C#83, D83, E83, F#83, G#83, A83, B83, C#84, D84, E84, F#84, G#84, A84, B83, C#85, D85, E85, F#85, G#85, A85, B85, C#86, D86, E86, F#86, G#86, A86, B86, C#87, D87, E87, F#87, G#87, A87, B87, C#88, D88, E88, F#88, G#88, A88, B88, C#89, D89, E89, F#89, G#89, A89, B89, C#90, D90, E90, F#90, G#90, A90, B90, C#91, D91, E91, F#91, G#91, A91, B91, C#92, D92, E92, F#92, G#92, A92, B92, C#93, D93, E93, F#93, G#93, A93, B93, C#94, D94, E94, F#94, G#94, A94, B94, C#95, D95, E95, F#95, G#95, A95, B95, C#96, D96, E96, F#96, G#96, A96, B96, C#97, D97, E97, F#97, G#97, A97, B97, C#98, D98, E98, F#98, G#98, A98, B98, C#99, D99, E99, F#99, G#99, A99, B99, C#100, D100, E100, F#100, G#100, A100, B100, C#101, D101, E101, F#101, G#101, A101, B101, C#102, D102, E102, F#102, G#102, A102, B102, C#103, D103, E103, F#103, G#103, A103, B103, C#104, D104, E104, F#104, G#104, A104, B104, C#105, D105, E105, F#105, G#105, A105, B105, C#106, D106, E106, F#106, G#106, A106, B106, C#107, D107, E107, F#107, G#107, A107, B107, C#108, D108, E108, F#108, G#108, A108, B108, C#109, D109, E109, F#109, G#109, A109, B109, C#110, D110, E110, F#110, G#110, A110, B110, C#111, D111, E111, F#111, G#111, A111, B111, C#112, D112, E112, F#112, G#112, A112, B112, C#113, D113, E113, F#113, G#113, A113, B113, C#114, D114, E114, F#114, G#114, A114, B114, C#115, D115, E115, F#115, G#115, A115, B115, C#116, D116, E116, F#116, G#116, A116, B116, C#117, D117, E117, F#117, G#117, A117, B117, C#118, D118, E118, F#118, G#118, A118, B118, C#119, D119, E119, F#119, G#119, A119, B119, C#120, D120, E120, F#120, G#120, A120, B120, C#121, D121, E121, F#121, G#121, A121, B121, C#122, D122, E122, F#122, G#122, A122, B122, C#123, D123, E123, F#123, G#123, A123, B123, C#124, D124, E124, F#124, G#124, A124, B124, C#125, D125, E125, F#125, G#125, A125, B125, C#126, D126, E126, F#126, G#126, A126, B126, C#127, D127, E127, F#127, G#127, A127, B127, C#128, D128, E128, F#128, G#128, A128, B128, C#129, D129, E129, F#129, G#129, A129, B129, C#130, D130, E130, F#130, G#130, A130, B130, C#131, D131, E131, F#131, G#131, A131, B131, C#132, D132, E132, F#132, G#132, A132, B132, C#133, D133, E133, F#133, G#133, A133, B133, C#134, D134, E134, F#134, G#134, A134, B134, C#135, D135, E135, F#135, G#135, A135, B135, C#136, D136, E136, F#136, G#136, A136, B136, C#137, D137, E137, F#137, G#137, A137, B137, C#138, D138, E138, F#138, G#138, A138, B138, C#139, D139, E139, F#139, G#139, A139, B139, C#140, D140, E140, F#140, G#140, A140, B140, C#141, D141, E141, F#141, G#141, A141, B141, C#142, D142, E142, F#142, G#142, A142, B142, C#143, D143, E143, F#143, G#143, A143, B143, C#144, D144, E144, F#144, G#144, A144, B144, C#145, D145, E145, F#145, G#145, A145, B145, C#146, D146, E146, F#146, G#146, A146, B146, C#147, D147, E147, F#147, G#147, A147, B147, C#148, D148, E148, F#148, G#148, A148, B148, C#149, D149, E149, F#149, G#149, A149, B149, C#150, D150, E150, F#150, G#150, A150, B150, C#151, D151, E151, F#151, G#151, A151, B151, C#152, D152, E152, F#152, G#152, A152, B152, C#153, D153, E153, F#153, G#153, A153, B153, C#154, D154, E154, F#154, G#154, A154, B154, C#155, D155, E155, F#155, G#155, A155, B155, C#156, D156, E156, F#156, G#156, A156, B156, C#157, D157, E157, F#157, G#157, A157, B157, C#158, D158, E158, F#158, G#158, A158, B158, C#159, D159, E159, F#159, G#159, A159, B159, C#160, D160, E160, F#160, G#160, A160, B160, C#161, D161, E161, F#161, G#161, A161, B161, C#162, D162, E162, F#162, G#162, A162, B162, C#163, D163, E163, F#163, G#163, A163, B163, C#164, D164, E164, F#164, G#164, A164, B164, C#165, D165, E165, F#165, G#165, A165, B165, C#166, D166, E166, F#166, G#166, A166, B166, C#167, D167, E167, F#167, G#167, A167, B167, C#168, D168, E168, F#168, G#168, A168, B168, C#169, D169, E169, F#169, G#169, A169, B169, C#170, D170, E170, F#170, G#170, A170, B170, C#171, D171, E171, F#171, G#171, A171, B171, C#172, D172, E172, F#172, G#172, A172, B172, C#173, D173, E173, F#173, G#173, A173, B173, C#174, D174, E174, F#174, G#174, A174, B174, C#175, D175, E175, F#175, G#175, A175, B175, C#176, D176, E176, F#176, G#176, A176, B176, C#177, D177, E177, F#177, G#177, A177, B177, C#178, D178, E178, F#178, G#178, A178, B178, C#179, D179, E179, F#179, G#179, A179, B179, C#180, D180, E180, F#180, G#180, A180, B180, C#181, D181, E181, F#181, G#181, A181, B181, C#182, D182, E182, F#182, G#182, A182, B182, C#183, D183, E183, F#183, G#183, A183, B183, C#184, D184, E184, F#184, G#184, A184, B184, C#185, D185, E185, F#185, G#185, A185, B185, C#186, D186, E186, F#186, G#186, A186, B186, C#187, D187, E187, F#187, G#187, A187, B187, C#188, D188, E188, F#188, G#188, A188, B188, C#189, D189, E189, F#189, G#189, A189, B189, C#190, D190, E190, F#190, G#190, A190, B190, C#191, D191, E191, F#191, G#191, A191, B191, C#192, D192, E192, F#192, G#192, A192, B192, C#193, D193, E193, F#193, G#193, A193, B193, C#194, D194, E194, F#194, G#194, A194, B194, C#195, D195, E195, F#195, G#195, A195, B195, C#196, D196, E196, F#196, G#196, A196, B196, C#197, D197, E197, F#197, G#197, A197, B197, C#198, D198, E198, F#198, G#198, A198, B198, C#199, D199, E199, F#199, G#199, A199, B199, C#200, D200, E200, F#200, G#200, A200, B200, C#201, D201, E201, F#201, G#201, A201, B201, C#202, D202, E202, F#202, G#202, A202, B202, C#203, D203, E203, F#203, G#203, A203, B203, C#204, D204, E204, F#204, G#204, A204, B204, C#205, D205, E205, F#205, G#205, A205, B205, C#206, D206, E206, F#206, G#206, A206, B206, C#207, D207, E207, F#207, G#207, A207, B207, C#208, D208, E208, F#208, G#208, A208, B208, C#209, D209, E209, F#209, G#209, A209, B209, C#210, D210, E210, F#210, G#210, A210, B210, C#211, D211, E211, F#211, G#211, A211, B211, C#212, D212, E212, F#212, G#212, A212, B212, C#213, D213, E213, F#213, G#213, A213, B213, C#214, D214, E214, F#214, G#214, A214, B214, C#215, D215, E215, F#215, G#215, A215, B215, C#216, D216, E216, F#216, G#216, A216, B216, C#217, D217, E217, F#217, G#217, A217, B217, C#218, D218, E218, F#218, G#218, A218, B218, C#219, D219, E219, F#219, G#219, A219, B219, C#220, D220, E220, F#220, G#220, A220, B220, C#221, D221, E221, F#221, G#221, A221, B221, C#222, D222, E222, F#222, G#222, A222, B222, C#223, D223, E223, F#223, G#223, A223, B223, C#224, D224, E224, F#224, G#224, A224, B224, C#225, D225, E225, F#225, G#225, A225, B225, C#226, D226, E226, F#226, G#226, A226, B226, C#227, D227, E227, F#227, G#227, A227, B227, C#228, D228, E228, F#228, G#228, A228, B228, C#229, D229, E229, F#229, G#229, A229, B229, C#230, D230, E230, F#230, G#230, A230, B230, C#231, D231, E231, F#231, G#231, A231, B231, C#232, D232, E232, F#232, G#232, A232, B232, C#233, D233, E233, F#233, G#233, A233, B233, C#234, D234, E234, F#234, G#234, A234, B234, C#235, D235, E235, F#235, G#235, A235, B235, C#236, D236, E236, F#236, G#236, A236, B236, C#237, D237, E237, F#237, G#237, A237, B237, C#238, D238, E238, F#238, G#238, A238, B238, C#239, D239, E239, F#239, G#239, A239, B239, C#240, D240, E240, F#240, G#240, A240, B240, C#241, D241, E241, F#241, G#241, A241, B241, C#242, D242, E242, F#242, G#242, A242, B242, C#243, D243, E243, F#243, G#243, A243, B243, C#244, D244, E244, F#244, G#244, A244, B244, C#245, D245, E245, F#245, G#245, A245, B245, C#246, D246, E246, F#246, G#246, A246, B246, C#247, D247, E247, F#247, G#247, A247, B247, C#248, D248, E248, F#248, G#248, A248, B248, C#249, D249, E249, F#249, G#249, A249, B249, C#250, D250, E250, F#250, G#250, A250, B250, C#251, D251, E251, F#251, G#251, A251, B251, C#252, D252, E252, F#252, G#252, A252, B252, C#253, D253, E253, F#253, G#253, A253, B253, C#254, D254, E254, F#254, G#254, A254, B254, C#255, D255, E255, F#255, G#255, A255, B255, C#256, D256, E256, F#256, G#256, A256, B256, C#257, D257, E257, F#257, G#257, A257, B257, C#258, D258, E258, F#258, G#258, A258, B258, C#259, D259, E259, F#259, G#259, A259, B259, C#260, D260, E260, F#260, G#260, A260, B260, C#261, D261, E261, F#261, G#261, A261, B261, C#262, D262, E262, F#262, G#262, A262, B262, C#263, D263, E263, F#263, G#263, A263, B263, C#264, D264, E264, F#264, G#264, A264, B264, C#265, D265, E265, F#265, G#265, A265, B265, C#266, D266, E266, F#266, G#266, A266, B266, C#267, D267, E267, F#267, G#267, A267, B267, C#268, D268, E268, F#268, G#268, A268, B268, C#269, D269, E269, F#269, G#269, A269, B269, C#270, D270, E270, F#270, G#270, A270, B270, C#271, D271, E271, F#271, G#271, A271, B271, C#272, D272, E272, F#272, G#272, A272, B272, C#273, D273, E273, F#273, G#273, A273, B273, C#274, D274, E274, F#274, G#274, A274, B274, C#275, D275, E275, F#275, G#275, A275, B275, C#276, D276, E276, F#276, G#276, A276, B276, C#277, D277, E277, F#277, G#277, A277, B277, C#278, D278, E278, F#278, G#278, A278, B278, C#279, D279, E279, F#279, G#279, A279, B279, C#280, D280, E280, F#280, G#280, A280, B280, C#281, D281, E281, F#281, G#281, A281, B281, C#282, D282, E282, F#282, G#282, A282, B282, C#283, D283, E283, F#283, G#283, A283, B283, C#284, D284, E284, F#284, G#284, A284, B284, C#285, D285, E285, F#285, G#285, A285, B285, C#286, D286, E286, F#286, G#286, A286, B286, C#287, D287, E287, F#287, G#287, A287, B287, C#288, D288, E288, F#288, G#288, A288, B288, C#289, D289, E289, F#289, G#289, A289, B289, C#290, D290, E290, F#290, G#290, A290, B290, C#291, D291, E291, F#291, G#291, A291, B291, C#292, D292, E292, F#292, G#292, A292, B292, C#293, D293, E293, F#293, G#293, A293, B293, C#294, D294, E294, F#294, G#294, A294, B294, C#295, D295, E295, F#295, G#295, A295, B295, C#296, D296, E296, F#296, G#296, A296, B296, C#297, D297, E297, F#297, G#297, A297, B297, C#298, D298, E298, F#298, G#298, A298, B298, C#299, D299, E299, F#299, G#299, A299, B299, C#300, D300, E300, F#300, G#300, A300, B300, C#301, D301, E301, F#301, G#301, A301, B301, C#302, D302, E302, F#302, G#302, A302, B302, C#303, D303, E303, F#303, G#303, A303, B303, C#304, D304, E304, F#304, G#304, A304, B304, C#305, D305, E305, F#305, G#305, A305, B305, C#306, D306, E306, F#306, G#306, A306, B306, C#307, D307, E307, F#307, G#307, A307, B307, C#308, D308, E308, F#308, G#308, A308, B308, C#309, D309, E309, F#309, G#309, A309, B309, C#310, D310, E310, F#310, G#310, A310, B310, C#311, D311, E311, F#311, G#311, A311, B311, C#312, D312, E312, F#312, G#312, A312, B312, C#313, D313, E313, F#313, G#313, A313, B313, C#314, D314, E314, F#314, G#314, A314, B314, C#315, D315, E315, F#315, G#315, A315, B315, C#316, D316, E316, F#316, G#316, A316, B316, C#317, D317, E317, F#317, G#317, A317, B317, C#318, D318, E318, F#318, G#318, A318, B318, C#319, D319, E319, F#319, G#319, A319, B319, C#320, D320, E320, F#320, G#320, A320, B320, C#321, D321, E321, F#321, G#321, A321, B321, C#322, D322, E322, F#322, G#322, A322, B322, C#323, D323, E323, F#323, G#323, A323, B323, C#324, D324, E324, F#324, G#324, A324, B324, C#325, D325, E325, F#325, G#325, A325, B325, C#326, D326, E326, F#326, G#326, A326, B326, C#327, D327, E327, F#327, G#327, A327, B327, C#328, D328, E328, F#328, G#328, A328, B328, C#329, D329, E329, F#329, G#329, A329, B329, C#330, D330, E330, F#330, G#330, A33

105

El. Guit. 8

El. Guit. 8

El. Guit. 8

El. Guit. 8

El. Guit. 8

El. Guit. 8

B. Guit.

B. Guit.

St. #

Synth.

Synth.

D. Set

106

The musical score for page 106 consists of the following staves and parts:

- El. Guit. (1-4):** Four staves of electric guitar. The first, third, and fourth staves play a continuous eighth-note melody. The second staff is mostly silent, with a single note appearing in the second measure.
- El. Guit. (5):** A fifth electric guitar staff featuring a complex, high-pitched melodic line with many natural harmonics (indicated by dots on the strings).
- B. Guit. (6-7):** Two staves of bass guitar. The sixth staff plays a steady eighth-note bass line. The seventh staff is mostly silent, with a single note in the second measure.
- St. (8):** A string section staff with a melodic line featuring a slur and a grace note.
- Synth. (9-10):** Two synthesizer staves, both of which are mostly silent with a single note in the second measure.
- D. Set (11):** A drum set staff showing a rhythmic pattern with four measures, each containing a snare drum hit and a kick drum pattern.

107

El. Guit. 8

El. Guit. 8

El. Guit. 8

El. Guit. 8

El. Guit. 8

El. Guit. 8

B. Guit.

B. Guit.

St.

Synth.

Synth.

D. Set

108

The musical score for page 56, measures 108-110, is arranged for a multi-instrument ensemble. The staves are as follows:

- El. Guit. (1-4):** Four staves of electric guitar. Measures 108 and 109 feature a continuous eighth-note arpeggiated pattern. In measure 110, the first and third staves play a descending eighth-note sequence (F#4, E4, D4, C4), while the second and fourth staves play a descending quarter-note sequence (F#4, E4, D4, C4).
- El. Guit. (5):** A single electric guitar staff. Measures 108 and 109 are silent. In measure 110, it plays a descending eighth-note sequence (F#4, E4, D4, C4) with a triplet of eighth notes (F#4, E4, D4) in the first half.
- El. Guit. (6):** A single electric guitar staff. Measures 108 and 109 are silent. In measure 110, it plays a descending eighth-note sequence (F#4, E4, D4, C4) with a triplet of eighth notes (F#4, E4, D4) in the first half.
- B. Guit. (1-2):** Two bass guitar staves. Measures 108 and 109 are silent. In measure 110, they play a descending quarter-note sequence (F#4, E4, D4, C4).
- St. (1):** A string staff. Measures 108 and 109 are silent. In measure 110, it plays a descending quarter-note sequence (F#4, E4, D4, C4).
- Synth. (1-2):** Two synthesizer staves. Measures 108 and 109 are silent. In measure 110, they play a descending quarter-note sequence (F#4, E4, D4, C4).
- D. Set:** A drum staff. Measures 108 and 109 are silent. In measure 110, it plays a continuous eighth-note arpeggiated pattern.



111

El. Guit.

El. Guit.

El. Guit.

El. Guit.

El. Guit.

El. Guit.

B. Guit.

B. Guit.

St.

Synth.

Synth.

D. Set

115

El. Guit.

El. Guit.

El. Guit.

El. Guit.

El. Guit.

El. Guit.

B. Guit.

B. Guit.

St.

Synth.

Synth.

D. Set

118

El. Guit.

El. Guit.

El. Guit.

El. Guit.

El. Guit.

El. Guit.

B. Guit.

B. Guit.

St.

Synth.

Synth.

D. Set

121

El. Guit.

El. Guit.

El. Guit.

El. Guit.

El. Guit.

El. Guit.

B. Guit.

B. Guit.

St.

Synth.

Synth.

D. Set

123

El. Guit. 8

El. Guit. 8

El. Guit. 8

El. Guit. 8

El. Guit. 8

El. Guit. 8

B. Guit.

B. Guit.

St.

Synth.

Synth.

D. Set

125

El. Guit.

El. Guit.

El. Guit.

El. Guit.

El. Guit.

El. Guit.

B. Guit.

B. Guit.

St.

Synth.

Synth.

D. Set

128

El. Guit.

El. Guit.

El. Guit.

El. Guit.

El. Guit.

El. Guit.

B. Guit.

B. Guit.

St.

Synth.

Synth.

D. Set

130

El. Guit.

El. Guit.

El. Guit.

El. Guit.

El. Guit.

El. Guit.

B. Guit.

B. Guit.

St.

Synth.

Synth.

D. Set



132

The musical score for page 65, starting at measure 132, is arranged as follows:

- El. Guit. (1-6):** Six staves of electric guitar. The first and third staves have a treble clef and a key signature of one sharp (F#). The first staff begins with a measure containing a dotted quarter note and an eighth rest, followed by a series of eighth notes. The third staff has a similar pattern. The second, fourth, fifth, and sixth staves are mostly empty, with a few notes in the second measure.
- B. Guit. (1-2):** Two staves of bass guitar. The first staff has a bass clef and a key signature of one sharp (F#). It begins with a dotted quarter note and an eighth rest, followed by a series of eighth notes. The second staff is mostly empty.
- St. (1):** One staff, likely for a string section, with a bass clef and a key signature of one sharp (F#). It is mostly empty.
- Synth. (1-2):** Two staves of synthesizer. The first staff has a treble clef and a key signature of one sharp (F#). It begins with a dotted quarter note and an eighth rest, followed by a series of eighth notes. The second staff is mostly empty.
- D. Set (1):** One staff of drums. It begins with a dotted quarter note and an eighth rest, followed by a series of eighth notes.

133

El. Guit.

El. Guit.

El. Guit.

El. Guit.

El. Guit.

El. Guit.

B. Guit.

B. Guit.

St.

Synth.

Synth.

D. Set

134

El. Guit.

El. Guit.

El. Guit.

El. Guit.

El. Guit.

El. Guit.

B. Guit.

B. Guit.

St.

Synth.

Synth.

D. Set

135

El. Guit. 8

El. Guit. 8

El. Guit. 8

El. Guit. 8

El. Guit. 8

El. Guit. 8

B. Guit.

B. Guit.

St.

Synth. 3

Synth.

D. Set

136

El. Guit. 1: Treble clef, 8th notes, measure 136 has a whole note chord, measure 137 has a whole note chord, measure 138 has a whole note chord, measure 139 has a whole note chord.

El. Guit. 2: Treble clef, 8th notes, measure 136 has a whole note chord, measure 137 has a whole note chord, measure 138 has a whole note chord, measure 139 has a whole note chord.

El. Guit. 3: Treble clef, 8th notes, measure 136 has a whole note chord, measure 137 has a whole note chord, measure 138 has a whole note chord, measure 139 has a whole note chord.

El. Guit. 4: Treble clef, 8th notes, measure 136 has a whole note chord, measure 137 has a whole note chord, measure 138 has a whole note chord, measure 139 has a whole note chord.

El. Guit. 5: Treble clef, 8th notes, measure 136 has a whole note chord, measure 137 has a whole note chord, measure 138 has a whole note chord, measure 139 has a whole note chord.

El. Guit. 6: Treble clef, 8th notes, measure 136 has a whole note chord, measure 137 has a whole note chord, measure 138 has a whole note chord, measure 139 has a whole note chord.

B. Guit. 1: Bass clef, 8th notes, measure 136 has a whole note chord, measure 137 has a whole note chord, measure 138 has a whole note chord, measure 139 has a whole note chord.

B. Guit. 2: Bass clef, 8th notes, measure 136 has a whole note chord, measure 137 has a whole note chord, measure 138 has a whole note chord, measure 139 has a whole note chord.

St.: Bass clef, 8th notes, measure 136 has a whole note chord, measure 137 has a whole note chord, measure 138 has a whole note chord, measure 139 has a whole note chord.

Synth. 1: Bass clef, 8th notes, measure 136 has a whole note chord, measure 137 has a whole note chord, measure 138 has a whole note chord, measure 139 has a whole note chord.

Synth. 2: Treble clef, 8th notes, measure 136 has a whole note chord, measure 137 has a whole note chord, measure 138 has a whole note chord, measure 139 has a whole note chord.

D. Set: Treble clef, 8th notes, measure 136 has a whole note chord, measure 137 has a whole note chord, measure 138 has a whole note chord, measure 139 has a whole note chord.

137

El. Guit.

El. Guit.

El. Guit.

El. Guit.

El. Guit.

El. Guit.

B. Guit.

B. Guit.

St.

Synth.

Synth.

D. Set

139

El. Guit.

El. Guit.

El. Guit.

El. Guit.

El. Guit.

El. Guit.

B. Guit.

B. Guit.

St.

Synth.

Synth.

D. Set

140

The musical score for page 72, measures 140-143, is arranged as follows:

- El. Guit. (1-6):** Six staves. Staves 1, 3, 5, and 6 contain a dotted quarter note at the start of measure 140, followed by a series of eighth notes in measures 141, 142, and 143. Staves 2 and 4 contain a whole rest in measure 140, followed by a series of eighth notes in measures 141, 142, and 143.
- B. Guit. (7-8):** Two staves. Staff 7 contains a dotted quarter note at the start of measure 140, followed by a series of eighth notes in measures 141, 142, and 143. Staff 8 contains a whole rest in measure 140, followed by a series of eighth notes in measures 141, 142, and 143.
- St. (9):** One staff containing a whole rest in measure 140, followed by a series of eighth notes in measures 141, 142, and 143.
- Synth. (10-11):** Two staves. Staff 10 contains a complex melodic line starting with a triplet of eighth notes in measure 140, followed by a series of eighth notes in measures 141, 142, and 143. Staff 11 contains a whole rest in measure 140, followed by a series of eighth notes in measures 141, 142, and 143.
- D. Set (12):** One staff containing a series of eighth notes in measures 140, 141, 142, and 143.



141

El. Guit.

El. Guit.

El. Guit.

El. Guit.

El. Guit.

El. Guit.

B. Guit.

B. Guit.

St.

Synth.

Synth.

D. Set

143

El. Guit.

El. Guit.

El. Guit.

El. Guit.

El. Guit.

El. Guit.

B. Guit.

B. Guit.

St.

Synth.

Synth.

D. Set

144

El. Guit.

El. Guit.

El. Guit.

El. Guit.

El. Guit.

El. Guit.

B. Guit.

B. Guit.

St.

Synth.

Synth.

D. Set

3

145

El. Guit.

El. Guit.

El. Guit.

El. Guit.

El. Guit.

El. Guit.

B. Guit.

B. Guit.

St.

Synth.

Synth.

D. Set

147

El. Guit.

El. Guit.

El. Guit.

El. Guit.

El. Guit.

El. Guit.

B. Guit.

B. Guit.

St.

Synth.

Synth.

D. Set

149

El. Guit.

El. Guit.

El. Guit.

El. Guit.

El. Guit.

El. Guit.

B. Guit.

B. Guit.

St.

Synth.

Synth.

D. Set

151

El. Guit.

El. Guit.

El. Guit.

El. Guit.

El. Guit.

El. Guit.

B. Guit.

B. Guit.

St.

Synth.

Synth.

D. Set

153

El. Guit.

El. Guit.

El. Guit.

El. Guit.

El. Guit.

El. Guit.

B. Guit.

B. Guit.

St.

Synth.

Synth.

D. Set

3



155

El. Guit.

El. Guit.

El. Guit.

El. Guit.

El. Guit.

El. Guit.

B. Guit.

B. Guit.

St.

Synth.

Synth.

D. Set

3

156

El. Guit.

El. Guit.

El. Guit.

El. Guit.

El. Guit.

El. Guit.

B. Guit.

B. Guit.

St.

Synth.

Synth.

D. Set

3

p

p

✕