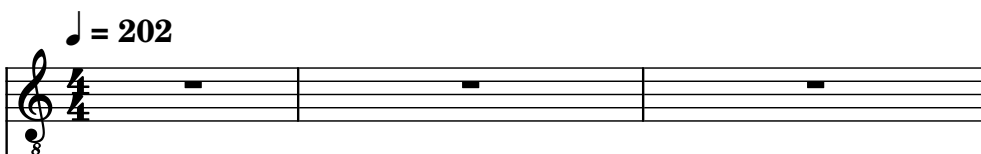


♩ = 202

Electric Guitar, Kurt Cobain



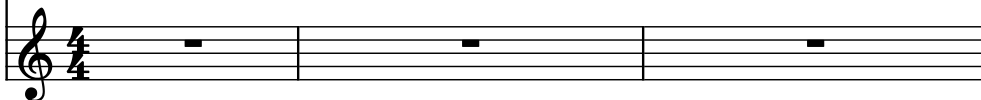
Electric Bass, Krist Novoselic



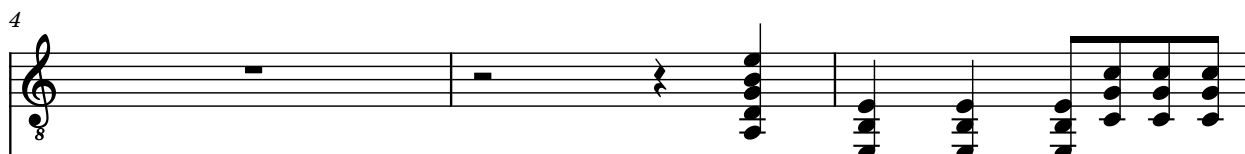
Drumset, Dave Grohl



Brass, Kurt Cobain



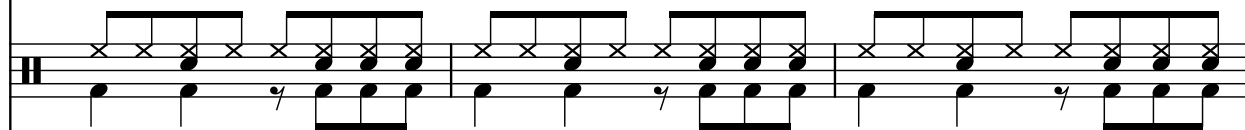
4
El. Guit.



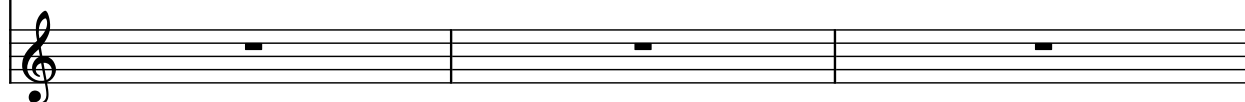
El. B.



D. Set



Br.



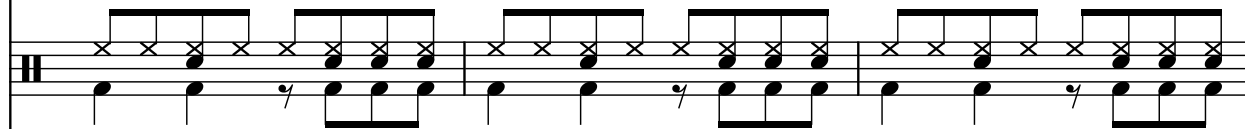
7
El. Guit.



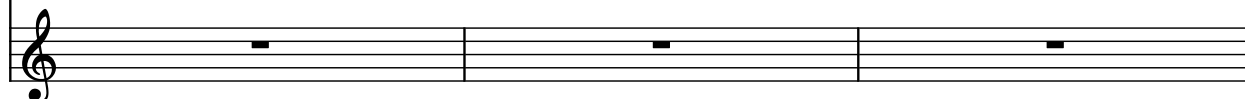
El. B.



D. Set



Br.



10

El. Guit.

El. B.

D. Set

Br.

El. Guit. staff: Treble clef, 8 flats. Measures 10-12: whole rests.

El. B. staff: Bass clef. Measures 10-12: eighth-note patterns.

D. Set staff: Treble clef, 8 flats. Measures 10-12: complex pattern with 'x' marks.

Br. staff: Treble clef, 8 flats. Measures 10-12: melodic line with a key signature change to one sharp.

13

El. Guit.

El. B.

D. Set

Br.

El. Guit. staff: Treble clef, 8 flats. Measures 13-15: whole rests.

El. B. staff: Bass clef. Measures 13-15: eighth-note patterns.

D. Set staff: Treble clef, 8 flats. Measures 13-15: complex pattern with 'x' marks.

Br. staff: Treble clef, 8 flats. Measures 13-15: melodic line with a key signature change to one sharp.

16

El. Guit.

El. B.

D. Set

Br.

El. Guit. staff: Treble clef, 8 flats. Measures 16-18: whole rests.

El. B. staff: Bass clef. Measures 16-18: eighth-note patterns.

D. Set staff: Treble clef, 8 flats. Measures 16-18: complex pattern with 'x' marks.

Br. staff: Bass clef, 8 flats. Measures 16-18: melodic line with a key signature change to one sharp.

19

El. Guit.

El. B.

D. Set

Br.

8

22

El. Guit.

El. B.

D. Set

Br.

8

25

El. Guit.

El. B.

D. Set

Br.

8

28

El. Guit.

El. B.

D. Set

Br.

31

El. Guit.

El. B.

D. Set

Br.

34

El. Guit.

El. B.

D. Set

Br.

38

El. Guit.

El. B.

D. Set

Br.

Measures 38-41. El. Guit. (6/8) plays a melodic line with a 6/8 time signature. El. B. (bass) plays a bass line. D. Set (drums) plays a pattern with 'x' marks. Br. (bass) plays a melodic line.

42

El. Guit.

El. B.

D. Set

Br.

Measures 42-44. El. Guit. (6/8) plays a melodic line with a 6/8 time signature. El. B. (bass) plays a bass line. D. Set (drums) plays a pattern with 'x' marks. Br. (bass) plays a melodic line.

45

El. Guit.

El. B.

D. Set

Br.

Measures 45-47. El. Guit. (6/8) plays a melodic line with a 6/8 time signature. El. B. (bass) plays a bass line. D. Set (drums) plays a pattern with 'x' marks. Br. (bass) plays a melodic line.

48

El. Guit.

El. B.

D. Set

Br.

Measures 48-50. El. Guit. has whole rests. El. B. plays eighth-note patterns. D. Set plays a complex pattern with eighth notes and rests. Br. plays a melody with sharps and naturals.

51

El. Guit.

El. B.

D. Set

Br.

Measures 51-53. El. Guit. has whole rests. El. B. plays eighth-note patterns. D. Set plays a complex pattern with eighth notes and rests. Br. plays a melody with a key signature change.

54

El. Guit.

El. B.

D. Set

Br.

Measures 54-56. El. Guit. plays chords. El. B. plays eighth-note patterns. D. Set plays a complex pattern with eighth notes and rests. Br. has whole rests.

57

El. Guit.

El. B.

D. Set

Br.

60

El. Guit.

El. B.

D. Set

Br.

63

El. Guit.

El. B.

D. Set

Br.

66

El. Guit.

El. B.

D. Set

Br.

69

El. Guit.

El. B.

D. Set

Br.

73

El. Guit.

El. B.

D. Set

Br.

77

El. Guit.

El. B.

D. Set

Br.

8

81

El. Guit.

El. B.

D. Set

Br.

8

84

El. Guit.

El. B.

D. Set

Br.

8