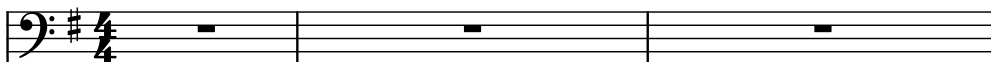
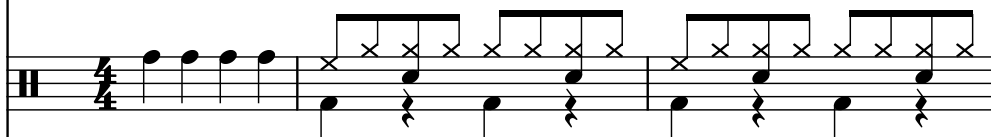


♩ = 124

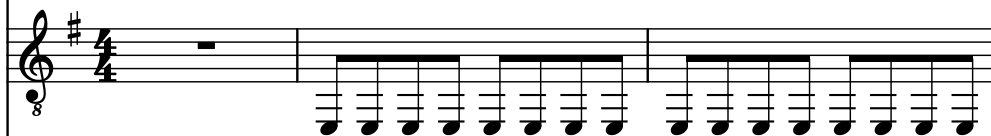
Bass Guitar, Bass



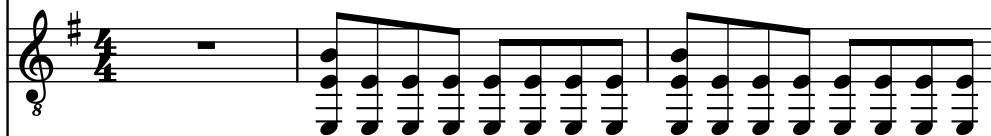
Drumset, Drums



Electric Guitar, Angus 1



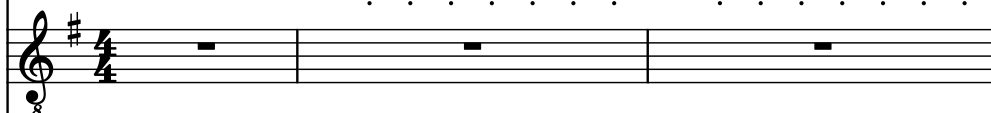
Electric Guitar, Malcolm 1



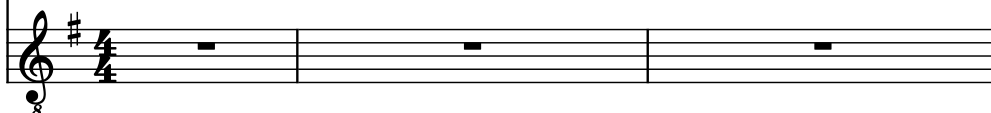
Acoustic Guitar, Malcolm 2



Electric Guitar, Lead



Electric Guitar, Lead P/Shift



B. Guit.

D. Set

El. Guit.

El. Guit.

Guit.

El. Guit.

El. Guit.

8

8

8

8

8

8

7

B. Guit.

D. Set

El. Guit.

El. Guit.

Guit.

El. Guit.

El. Guit.

B. Guit.

D. Set

El. Guit.

El. Guit.

Guit.

El. Guit.

El. Guit.

8

8

8

8

8

8

13

B. Guit.

D. Set

El. Guit.

El. Guit.

Guit.

El. Guit.

El. Guit.

The musical score for page 13, system 5, features seven staves. The top staff is for Bass Guitar (B. Guit.) in bass clef. The second staff is for Drum Set (D. Set) in treble clef. The third staff is for Electric Guitar (El. Guit.) in treble clef. The fourth staff is for Electric Guitar (El. Guit.) in treble clef. The fifth staff is for Acoustic Guitar (Guit.) in treble clef. The sixth staff is for Electric Guitar (El. Guit.) in treble clef. The seventh staff is for Electric Guitar (El. Guit.) in treble clef. The key signature is one sharp (F#). The time signature is 4/4. The score is divided into three measures. The first measure shows the B. Guit. playing a single note, the D. Set playing a complex rhythm, and the El. Guit. playing a complex rhythm. The second measure shows the B. Guit. playing a single note, the D. Set playing a complex rhythm, and the El. Guit. playing a complex rhythm. The third measure shows the B. Guit. playing a single note, the D. Set playing a complex rhythm, and the El. Guit. playing a complex rhythm.

B. Guit.

D. Set

El. Guit.

El. Guit.

Guit.

El. Guit.

El. Guit.

8

8

8

8

8

8

8

19

B. Guit.

D. Set

El. Guit.

El. Guit.

Guit.

El. Guit.

El. Guit.

B. Guit.

D. Set

El. Guit.

El. Guit.

Guit.

El. Guit.

El. Guit.

The musical score for page 22 consists of seven staves. The first staff, labeled 'B. Guit.', is in bass clef with a key signature of one sharp (F#) and contains a melodic line with eighth and sixteenth notes. The second staff, labeled 'D. Set', is in alto clef with a key signature of one sharp and contains a rhythmic pattern of eighth notes with 'x' marks above some notes. The third and fourth staves, both labeled 'El. Guit.', are in treble clef with a key signature of one sharp and contain a melodic line with eighth and sixteenth notes. The fifth, sixth, and seventh staves are also labeled 'El. Guit.' and are in treble clef with a key signature of one sharp, but they contain only rests, indicating they are silent for this section. The score is divided into four measures by vertical bar lines.



26

B. Guit.

D. Set

El. Guit.

El. Guit.

Guit.

El. Guit.

El. Guit.

8

8

8

8

8

8

30

B. Guit.

D. Set

El. Guit.

El. Guit.

Guit.

El. Guit.

El. Guit.

8

8

8

8

8

8

34

B. Guit.

D. Set

El. Guit.

El. Guit.

Guit.

El. Guit.

El. Guit.

37

B. Guit.

D. Set

El. Guit.

El. Guit.

Guit.

El. Guit.

El. Guit.

The musical score for page 12, measures 37-40, is written for a band consisting of a Bass Guitar (B. Guit.), a Drums (D. Set), and three Electric Guitars (El. Guit.). The key signature is one sharp (F#). The B. Guit. part is in bass clef, and the El. Guit. parts are in treble clef. The D. Set part is in a simplified notation. The Guit. part is in treble clef. The El. Guit. parts are in treble clef. The score shows a progression of chords and melodic lines across four measures.

39

B. Guit.

D. Set

El. Guit.

El. Guit.

Guit.

El. Guit.

El. Guit.

8

8

8

8

8

8

42

B. Guit.

D. Set

El. Guit.

El. Guit.

Guit.

El. Guit.

El. Guit.

45

B. Guit.

D. Set

El. Guit.

El. Guit.

Guit.

El. Guit.

El. Guit.

8

8

8

8

8

8

8

48

B. Guit.

D. Set

El. Guit.

El. Guit.

Guit.

El. Guit.

El. Guit.

8

8

8

8

8

8

8



51

B. Guit.

D. Set

El. Guit.

El. Guit.

Guit.

El. Guit.

El. Guit.

B. Guit.

D. Set

El. Guit.

El. Guit.

Guit.

El. Guit.

El. Guit.

8

8

8

8

8

8

8

58

B. Guit.

D. Set

El. Guit.

El. Guit.

Guit.

El. Guit.

El. Guit.

8

8

8

8

8

8

8

62

B. Guit.

D. Set

El. Guit.

El. Guit.

Guit.

El. Guit.

El. Guit.

The musical score for page 62 consists of seven staves. The first staff, labeled 'B. Guit.', is in bass clef with a key signature of one sharp (F#) and contains a melodic line with eighth and sixteenth notes. The second staff, labeled 'D. Set', is in alto clef with a key signature of one sharp and features a complex rhythmic pattern with many 'x' marks above the notes. The third and fourth staves, both labeled 'El. Guit.', are in treble clef with a key signature of one sharp and contain melodic lines with eighth and sixteenth notes. The fifth, sixth, and seventh staves, labeled 'Guit.', 'El. Guit.', and 'El. Guit.' respectively, are in treble clef with a key signature of one sharp and contain whole rests throughout the entire piece.

66

B. Guit.

D. Set

El. Guit.

El. Guit.

Guit.

El. Guit.

El. Guit.

B. Guit.

D. Set

El. Guit.

El. Guit.

Guit.

El. Guit.

El. Guit.

70

73

B. Guit.

D. Set

El. Guit.

El. Guit.

Guit.

El. Guit.

El. Guit.

73

B. Guit.

D. Set

El. Guit.

El. Guit.

Guit.

El. Guit.

El. Guit.

76



79

B. Guit.

D. Set

El. Guit.

El. Guit.

Guit.

El. Guit.

El. Guit.

The musical score for page 79 consists of six staves. The first staff, labeled 'B. Guit.', is in bass clef with a key signature of one sharp (F#). It contains a sequence of eighth notes and quarter notes. The second staff, labeled 'D. Set', is in a double bar line with a key signature of one sharp. It contains a sequence of eighth notes and quarter notes. The third staff, labeled 'El. Guit.', is in treble clef with a key signature of one sharp. It contains a sequence of eighth notes and quarter notes. The fourth staff, labeled 'El. Guit.', is in treble clef with a key signature of one sharp. It contains a sequence of eighth notes and quarter notes. The fifth staff, labeled 'Guit.', is in treble clef with a key signature of one sharp. It contains a sequence of eighth notes and quarter notes. The sixth staff, labeled 'El. Guit.', is in treble clef with a key signature of one sharp. It contains a sequence of eighth notes and quarter notes. The seventh staff, labeled 'El. Guit.', is in treble clef with a key signature of one sharp. It contains a sequence of eighth notes and quarter notes.

B. Guit.

D. Set

El. Guit.

El. Guit.

Guit.

El. Guit.

El. Guit.

The musical score for page 82 is written for a guitar ensemble. It consists of seven staves. The top staff is for B. Guit. (Bass Guitar) in a bass clef with a key signature of one sharp (F#). It contains a melodic line with eighth and sixteenth notes, including a triplet. The second staff is for D. Set (Drum Set) in a common time signature, featuring a pattern of eighth notes and rests. The third and fourth staves are for El. Guit. (Electric Guitar) in a treble clef with a key signature of one sharp (F#). They contain a melodic line with eighth and sixteenth notes, including a triplet. The fifth staff is for Guit. (Guitar) in a treble clef with a key signature of one sharp (F#), containing a melodic line with eighth and sixteenth notes, including a triplet. The sixth and seventh staves are for El. Guit. (Electric Guitar) in a treble clef with a key signature of one sharp (F#), containing a melodic line with eighth and sixteenth notes, including a triplet.

86

B. Guit.

D. Set

El. Guit.

El. Guit.

Guit.

El. Guit.

El. Guit.

89

B. Guit.

D. Set

El. Guit.

El. Guit.

Guit.

El. Guit.

El. Guit.

92

B. Guit.

D. Set

El. Guit.

El. Guit.

Guit.

El. Guit.

El. Guit.

B. Guit.

D. Set

El. Guit.

El. Guit.

Guit.

El. Guit.

El. Guit.

The musical score for page 95 consists of seven staves. The first staff is for B. Guit. in bass clef with a key signature of one sharp (F#). It contains a continuous eighth-note melody. The second staff is for D. Set, featuring a series of 'x' marks above the staff and a bass line with eighth notes. The third and fourth staves are for El. Guit. in treble clef with a key signature of one sharp (F#). They contain a series of chords, some marked with an '8' below the staff. The fifth staff is for Guit. in treble clef with a key signature of one sharp (F#), containing a series of chords. The sixth and seventh staves are for El. Guit. in treble clef with a key signature of one sharp (F#). The sixth staff contains a continuous eighth-note melody, while the seventh staff contains a series of chords, some marked with an '8' below the staff.

98

B. Guit.

D. Set

El. Guit.

El. Guit.

Guit.

El. Guit.

El. Guit.

B. Guit.

D. Set

El. Guit.

El. Guit.

Guit.

El. Guit.

El. Guit.



106

B. Guit.

D. Set

El. Guit.

El. Guit.

Guit.

El. Guit.

El. Guit.

8

8

8

8

8

8

110

B. Guit.

D. Set

El. Guit.

El. Guit.

Guit.

El. Guit.

El. Guit.

8

8

8

8

8

8

114

B. Guit.

D. Set

El. Guit.

El. Guit.

Guit.

El. Guit.

El. Guit.

The musical score for measure 114 consists of seven staves. The top staff, labeled 'B. Guit.', is in bass clef with a key signature of one sharp (F#). It contains a melodic line with eighth and sixteenth notes. The second staff, labeled 'D. Set', is in alto clef with a key signature of one sharp. It features a complex rhythmic pattern with 'x' marks indicating specific techniques. The third and fourth staves, both labeled 'El. Guit.', are in treble clef with a key signature of one sharp. They contain a series of chords and single notes. The fifth staff, labeled 'Guit.', is in treble clef with a key signature of one sharp and shows a series of rests. The sixth and seventh staves, both labeled 'El. Guit.', are in treble clef with a key signature of one sharp. The sixth staff has some notes with bends, while the seventh staff is mostly rests.

B. Guit.

D. Set

El. Guit.

El. Guit.

Guit.

El. Guit.

El. Guit.

The musical score for page 118 consists of six staves. The first staff, labeled 'B. Guit.', is in bass clef and G major, featuring a melodic line with eighth and sixteenth notes. The second staff, labeled 'D. Set', is a drum line with 'x' marks indicating cymbal hits. The third staff, labeled 'El. Guit.', is in treble clef and G major, featuring a melodic line with eighth and sixteenth notes. The fourth staff, labeled 'El. Guit.', is in treble clef and G major, featuring a melodic line with eighth and sixteenth notes. The fifth staff, labeled 'Guit.', is in treble clef and G major, featuring a whole rest. The sixth staff, labeled 'El. Guit.', is in treble clef and G major, featuring a melodic line with eighth and sixteenth notes. The seventh staff, labeled 'El. Guit.', is in treble clef and G major, featuring a melodic line with eighth and sixteenth notes.

122  $\text{♩} = 123$

B. Guit. 

D. Set 

El. Guit. 

El. Guit. 

Guit. 

El. Guit. 

El. Guit. 

B. Guit.

D. Set

El. Guit.

El. Guit.

Guit.

El. Guit.

El. Guit.

129

B. Guit.

D. Set

El. Guit.

El. Guit.

Guit.

El. Guit.

El. Guit.

8

8

8

8

8

8

132

B. Guit.

D. Set

El. Guit.

El. Guit.

Guit.

El. Guit.

El. Guit.

8

8

8

8

8

8



135

B. Guit.

D. Set

El. Guit.

El. Guit.

Guit.

El. Guit.

El. Guit.