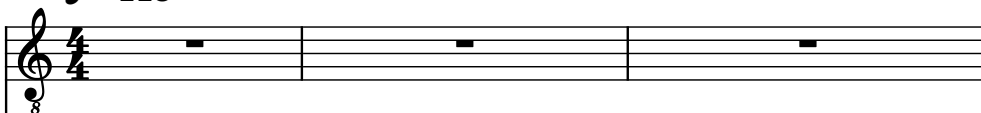
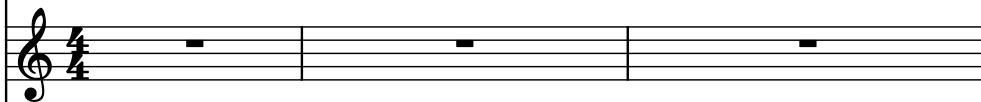


♩ = 115

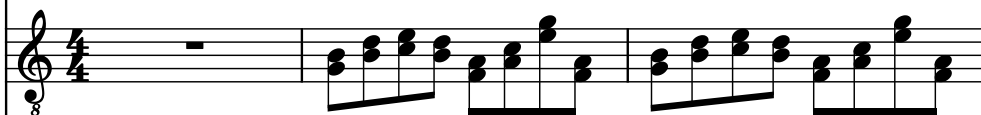
Alto Sackbut, Trombone



Tenor Saxophone, Sax



Electric Guitar, Guitar



Electric Guitar, Guitar



Electric Piano, Piano



Acoustic Guitar, Guitar



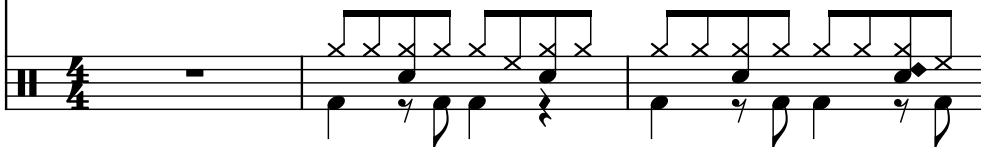
Rotary Organ, Organ



Fretless Electric Bass, Bass



Drumset, Drums



4

A. Sack.

T. Sax.

El. Guit.

El. Guit.

El. Pno.

Guit.

Rot. Org.

Frtl. El. B.

D. Set

Detailed description: This musical score page shows measures 4, 5, and 6 for a 10-piece band. The instruments are arranged in ten staves. Measures 4 and 5 are marked with a '4' at the top left. In measure 4, the A. Sack. and T. Sax. have whole rests, while the El. Guit. (two staves) play a rhythmic pattern of eighth notes, El. Pno. plays a sustained chord, Guit. plays a melodic line with eighth notes, Rot. Org. plays a sustained chord, Frtl. El. B. plays a melodic line with eighth notes, and D. Set plays a complex rhythmic pattern with eighth notes and rests. In measure 5, the A. Sack. and T. Sax. have whole rests, El. Guit. continues the eighth-note pattern, El. Pno. plays a sustained chord, Guit. plays a melodic line with eighth notes, Rot. Org. plays a sustained chord, Frtl. El. B. plays a melodic line with eighth notes, and D. Set plays a complex rhythmic pattern. In measure 6, the A. Sack. and T. Sax. have whole rests, El. Guit. continues the eighth-note pattern, El. Pno. plays a sustained chord, Guit. plays a melodic line with eighth notes, Rot. Org. plays a sustained chord, Frtl. El. B. plays a melodic line with eighth notes, and D. Set plays a complex rhythmic pattern.

7

A. Sack.

T. Sax.

El. Guit.

El. Guit.

El. Pno.

Guit.

Rot. Org.

Frtl. El. B.

D. Set

10

A. Sack.

T. Sax.

El. Guit.

El. Guit.

El. Pno.

Guit.

Rot. Org.

Frtl. El. B.

D. Set

Detailed description: This musical score page contains measures 10, 11, and 12. The instruments are arranged in a grand staff with the following parts from top to bottom: A. Sack. (Alto Saxophone), T. Sax. (Tenor Saxophone), El. Guit. (Electric Guitar), El. Guit. (Electric Guitar), El. Pno. (Electric Piano), Guit. (Acoustic Guitar), Rot. Org. (Rotary Organ), Frtl. El. B. (Fretless Electric Bass), and D. Set (Drum Set). Measure 10 begins with a rehearsal mark '10' and a key signature change to one flat (Bb). The A. Sack. and T. Sax. parts have a whole rest in measure 10. The El. Guit. parts play a series of chords. The El. Pno. part plays a series of chords. The Guit. part plays a series of chords. The Rot. Org. part plays a series of chords. The Frtl. El. B. part plays a series of eighth notes. The D. Set part plays a series of eighth notes. Measure 11 continues the patterns. Measure 12 continues the patterns.

13

A. Sack.

T. Sax.

El. Guit.

El. Guit.

El. Pno.

Guit.

Rot. Org.

Frtl. El. B.

D. Set

16

A. Sack.

T. Sax.

El. Guit.

El. Guit.

El. Pno.

Guit.

Rot. Org.

Frtl. El. B.

D. Set

19

A. Sack.

T. Sax.

El. Guit.

El. Guit.

El. Pno.

Guit.

Rot. Org.

Frtl. El. B.

D. Set

22

A. Sack.

T. Sax.

El. Guit.

El. Guit.

El. Pno.

Guit.

Rot. Org.

Frtl. El. B.

D. Set

25

A. Sack.

T. Sax.

El. Guit.

El. Guit.

El. Pno.

Guit.

Rot. Org.

Frtl. El. B.

D. Set

28

A. Sack.

T. Sax.

El. Guit.

El. Guit.

El. Pno.

Guit.

Rot. Org.

Frtl. El. B.

D. Set

31

A. Sack.

T. Sax.

El. Guit.

El. Guit.

El. Pno.

Guit.

Rot. Org.

Frtl. El. B.

D. Set

Detailed description: This musical score page contains measures 31, 32, and 33. The instruments and their parts are as follows:
- **A. Sack.**: Treble clef, key of D major. Measure 31 has a half note D4 and a dotted half note F#4. Measure 32 has a half note D4, a quarter note E4, a quarter note F#4, and a quarter note G4. Measure 33 has a half note D4 and a dotted half note F#4.
- **T. Sax.**: Treble clef, key of D major. Measure 31 has a half note D4 and a dotted half note F#4. Measure 32 has a half note D4, a quarter note E4, a quarter note F#4, and a quarter note G4. Measure 33 has a half note D4, a quarter note E4, a quarter note F#4, and a quarter note G4.
- **El. Guit.**: Treble clef, key of D major. Measure 31 has a half note D4 and a dotted half note F#4. Measure 32 has a half note D4, a quarter note E4, a quarter note F#4, and a quarter note G4. Measure 33 has a half note D4 and a dotted half note F#4.
- **El. Pno.**: Treble clef, key of D major. Measure 31 has a half note D4 and a dotted half note F#4. Measure 32 has a half note D4, a quarter note E4, a quarter note F#4, and a quarter note G4. Measure 33 has a half note D4 and a dotted half note F#4.
- **Guit.**: Treble clef, key of D major. Measure 31 has a half note D4 and a dotted half note F#4. Measure 32 has a half note D4, a quarter note E4, a quarter note F#4, and a quarter note G4. Measure 33 has a half note D4 and a dotted half note F#4.
- **Rot. Org.**: Treble clef, key of D major. Measure 31 has a half note D4 and a dotted half note F#4. Measure 32 has a half note D4, a quarter note E4, a quarter note F#4, and a quarter note G4. Measure 33 has a half note D4 and a dotted half note F#4.
- **Frtl. El. B.**: Bass clef, key of D major. Measure 31 has a half note D3 and a dotted half note F#3. Measure 32 has a half note D3, a quarter note E3, a quarter note F#3, and a quarter note G3. Measure 33 has a half note D3 and a dotted half note F#3.
- **D. Set**: Bass clef, key of D major. Measure 31 has a half note D3 and a dotted half note F#3. Measure 32 has a half note D3, a quarter note E3, a quarter note F#3, and a quarter note G3. Measure 33 has a half note D3 and a dotted half note F#3.

34

A. Sack.

T. Sax.

El. Guit.

El. Guit.

El. Pno.

Guit.

Rot. Org.

Frtl. El. B.

D. Set

Detailed description: This musical score page contains measures 34, 35, and 36. The instruments and their parts are as follows: A. Sack. (Alto Saxophone) in treble clef, 8va, playing eighth notes and quarter notes. T. Sax. (Tenor Saxophone) in treble clef, 8va, playing eighth notes and quarter notes. El. Guit. (Electric Guitar) in treble clef, 8va, playing a rhythmic pattern of eighth notes. El. Guit. (Electric Guitar) in treble clef, 8va, playing a rhythmic pattern of eighth notes. El. Pno. (Electric Piano) in treble clef, 8va, playing a rhythmic pattern of eighth notes. Guit. (Guitar) in treble clef, 8va, playing a rhythmic pattern of eighth notes. Rot. Org. (Rotary Organ) in treble clef, 8va, playing a rhythmic pattern of eighth notes. Frtl. El. B. (Frontal Electric Bass) in bass clef, 8va, playing a rhythmic pattern of eighth notes. D. Set (Drum Set) in bass clef, 8va, playing a rhythmic pattern of eighth notes.

37

A. Sack.

T. Sax.

El. Guit.

El. Guit.

El. Pno.

Guit.

Rot. Org.

Frtl. El. B.

D. Set

37

40

A. Sack.

T. Sax.

El. Guit.

El. Guit.

El. Pno.

Guit.

Rot. Org.

Frtl. El. B.

D. Set

Detailed description: This musical score page contains measures 40 through 43. The instruments are arranged in a grand staff with the following parts from top to bottom: A. Sack. (Alto Saxophone), T. Sax. (Tenor Saxophone), El. Guit. (Electric Guitar), El. Guit. (Electric Guitar), El. Pno. (Electric Piano), Guit. (Guitar), Rot. Org. (Rotary Organ), Frtl. El. B. (Fretless Electric Bass), and D. Set (Drum Set). Measures 40 and 41 show the saxophones and electric guitar playing eighth-note patterns. Measure 42 features a prominent electric guitar solo with a series of eighth-note runs. Measure 43 continues the instrumental texture with various rhythmic patterns across the instruments. The drum set part includes a consistent bass drum and snare pattern with occasional cymbal accents.

43

A. Sack.

T. Sax.

El. Guit.

El. Guit.

El. Pno.

Guit.

Rot. Org.

Frtl. El. B.

D. Set

Detailed description: This musical score page contains measures 43 through 46. The instruments are arranged in a grand staff with nine staves. The A. Sack. and T. Sax. parts are in treble clef. The El. Guit. parts are in treble clef. The El. Pno. part is in treble clef. The Guit. part is in treble clef. The Rot. Org. part is in treble clef. The Frtl. El. B. part is in bass clef. The D. Set part is in bass clef. The score includes various musical notations such as notes, rests, accidentals, and dynamic markings.

46

A. Sack.

T. Sax.

El. Guit.

El. Guit.

El. Pno.

Guit.

Rot. Org.

Frtl. El. B.

D. Set

The musical score for page 16, measures 46-48, is written for a large ensemble. The instruments and their parts are as follows:

- A. Sack. (Alto Saxophone):** Treble clef, 8/8 time. Measures 46-48 show a melodic line with eighth and quarter notes, including a flat (Bb) and a sharp (F#).
- T. Sax. (Tenor Saxophone):** Treble clef, 8/8 time. Measures 46-48 show a melodic line with eighth and quarter notes, including a sharp (F#) and a flat (Bb).
- El. Guit. (Electric Guitar):** Two staves, treble clef, 8/8 time. Measures 46-48 show a rhythmic accompaniment with chords and single notes, including a flat (Bb) and a sharp (F#).
- El. Pno. (Electric Piano):** Treble clef, 8/8 time. Measures 46-48 show a rhythmic accompaniment with chords and single notes, including a flat (Bb) and a sharp (F#).
- Guit. (Acoustic Guitar):** Treble clef, 8/8 time. Measures 46-48 show a rhythmic accompaniment with chords and single notes, including a flat (Bb) and a sharp (F#).
- Rot. Org. (Rotary Organ):** Treble clef, 8/8 time. Measures 46-48 show a rhythmic accompaniment with chords and single notes, including a flat (Bb) and a sharp (F#).
- Frtl. El. B. (Fretless Electric Bass):** Bass clef, 8/8 time. Measures 46-48 show a melodic line with eighth and quarter notes, including a sharp (F#) and a flat (Bb).
- D. Set (Drum Set):** Bass clef, 8/8 time. Measures 46-48 show a complex rhythmic pattern with many 'x' marks indicating specific notes or rests.

49

A. Sack.

T. Sax.

El. Guit.

El. Guit.

El. Pno.

Guit.

Rot. Org.

Frtl. El. B.

D. Set

52

A. Sack.

T. Sax.

El. Guit.

El. Guit.

El. Pno.

Guit.

Rot. Org.

Frtl. El. B.

D. Set

55

A. Sack.

T. Sax.

El. Guit.

El. Guit.

El. Pno.

Guit.

Rot. Org.

Frtl. El. B.

D. Set

The musical score for page 19, starting at measure 55, is arranged for a nine-piece band. The instruments and their parts are as follows:

- A. Sack. (Alto Saxophone):** Melodic line with slurs, starting in measure 55.
- T. Sax. (Tenor Saxophone):** Melodic line with slurs, starting in measure 55.
- El. Guit. (Electric Guitar):** Two staves, both playing chords.
- El. Pno. (Electric Piano):** Melodic line with slurs, starting in measure 55.
- Guit. (Guitar):** Melodic line with slurs, starting in measure 55.
- Rot. Org. (Rotary Organ):** Melodic line with slurs, starting in measure 55.
- Frtl. El. B. (Fretless Electric Bass):** Melodic line with slurs, starting in measure 55.
- D. Set (Drum Set):** Rhythmic pattern with slurs, starting in measure 55.

58

A. Sack.

T. Sax.

El. Guit.

El. Guit.

El. Pno.

Guit.

Rot. Org.

Frtl. El. B.

D. Set

The musical score for page 20, measures 58-60, is arranged for a nine-piece band. The instruments and their parts are as follows:

- A. Sack. (Alto Saxophone):** Treble clef, 8va. Measures 58-60 show a melodic line with eighth and quarter notes, including a phrase with a slur and a dotted quarter note.
- T. Sax. (Tenor Saxophone):** Treble clef. Measures 58-60 show a similar melodic line to the Alto Saxophone, with eighth and quarter notes and a phrase with a slur and a dotted quarter note.
- El. Guit. (Electric Guitar):** Two staves, both Treble clef, 8va. Measures 58-60 show a dense, rhythmic accompaniment consisting of eighth-note chords.
- El. Pno. (Electric Piano):** Bass clef. Measures 58-60 show a bass line with eighth and quarter notes, including a phrase with a slur and a dotted quarter note.
- Guit. (Acoustic Guitar):** Treble clef. Measures 58-60 show a bass line with eighth and quarter notes, including a phrase with a slur and a dotted quarter note.
- Rot. Org. (Rotary Organ):** Treble clef. Measures 58-60 show a bass line with eighth and quarter notes, including a phrase with a slur and a dotted quarter note.
- Frtl. El. B. (Frontline Electric Bass):** Bass clef. Measures 58-60 show a bass line with eighth and quarter notes, including a phrase with a slur and a dotted quarter note.
- D. Set (Drum Set):** Bass clef. Measures 58-60 show a drum pattern with eighth and quarter notes, including a phrase with a slur and a dotted quarter note.

61

A. Sack.

T. Sax.

El. Guit.

El. Guit.

El. Pno.

Guit.

Rot. Org.

Frtl. El. B.

D. Set

61

64

A. Sack.

T. Sax.

El. Guit.

El. Guit.

El. Pno.

Guit.

Rot. Org.

Frtl. El. B.

D. Set

This musical score page contains measures 64, 65, and 66. The instruments and their parts are as follows:

- A. Sack.**: Treble clef, 8 flats. Measure 64 has a dotted quarter note on G4, followed by eighth notes on A4, Bb4, and C5. Measure 65 has a dotted quarter note on D5, followed by eighth notes on E5, F5, and G5. Measure 66 has a dotted quarter note on A5, followed by eighth notes on B5 and C6, then a whole note on D6.
- T. Sax.**: Treble clef, 1 sharp (F#). Measure 64 has a dotted quarter note on F#4, followed by eighth notes on G#4, A4, and B4. Measure 65 has a dotted quarter note on C5, followed by eighth notes on D5, E5, and F#5. Measure 66 has a dotted quarter note on G5, followed by eighth notes on A5 and B5, then a whole note on C6.
- El. Guit.**: Treble clef, 8 flats. Measure 64 has a dotted quarter note on G4, followed by eighth notes on A4, Bb4, and C5. Measure 65 has a dotted quarter note on D5, followed by eighth notes on E5, F5, and G5. Measure 66 has a dotted quarter note on A5, followed by eighth notes on B5 and C6, then a whole note on D6.
- El. Guit.**: Treble clef, 8 flats. Measure 64 has a dotted quarter note on G4, followed by eighth notes on A4, Bb4, and C5. Measure 65 has a dotted quarter note on D5, followed by eighth notes on E5, F5, and G5. Measure 66 has a dotted quarter note on A5, followed by eighth notes on B5 and C6, then a whole note on D6.
- El. Pno.**: Treble clef. Measure 64 has a dotted quarter note on G4, followed by eighth notes on A4, Bb4, and C5. Measure 65 has a dotted quarter note on D5, followed by eighth notes on E5, F5, and G5. Measure 66 has a dotted quarter note on A5, followed by eighth notes on B5 and C6, then a whole note on D6.
- Guit.**: Treble clef, 8 flats. Measure 64 has a dotted quarter note on G4, followed by eighth notes on A4, Bb4, and C5. Measure 65 has a dotted quarter note on D5, followed by eighth notes on E5, F5, and G5. Measure 66 has a dotted quarter note on A5, followed by eighth notes on B5 and C6, then a whole note on D6.
- Rot. Org.**: Treble clef. Measure 64 has a dotted quarter note on G4, followed by eighth notes on A4, Bb4, and C5. Measure 65 has a dotted quarter note on D5, followed by eighth notes on E5, F5, and G5. Measure 66 has a dotted quarter note on A5, followed by eighth notes on B5 and C6, then a whole note on D6.
- Frtl. El. B.**: Bass clef. Measure 64 has a dotted quarter note on G3, followed by eighth notes on A3, Bb3, and C4. Measure 65 has a dotted quarter note on D4, followed by eighth notes on E4, F4, and G4. Measure 66 has a dotted quarter note on A4, followed by eighth notes on B4 and C5, then a whole note on D5.
- D. Set**: Bass clef. Measure 64 has a dotted quarter note on G3, followed by eighth notes on A3, Bb3, and C4. Measure 65 has a dotted quarter note on D4, followed by eighth notes on E4, F4, and G4. Measure 66 has a dotted quarter note on A4, followed by eighth notes on B4 and C5, then a whole note on D5.

67

A. Sack.

T. Sax.

El. Guit.

El. Guit.

El. Pno.

Guit.

Rot. Org.

Frtl. El. B.

D. Set

70

A. Sack.

T. Sax.

El. Guit.

El. Guit.

El. Pno.

Guit.

Rot. Org.

Frtl. El. B.

D. Set

70

74

A. Sack.

T. Sax.

El. Guit.

El. Guit.

El. Pno.

Guit.

Rot. Org.

Frtl. El. B.

D. Set