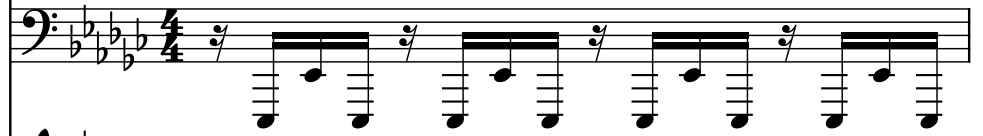


♩ = 140

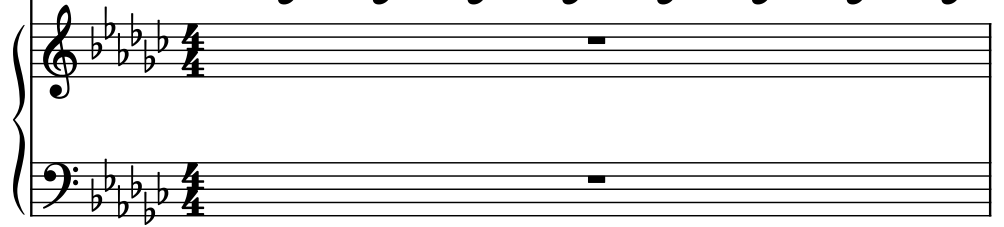
Bass Synthesizer, MELODY



Bass Synthesizer, BASSLINE



String Synthesizer, PADS



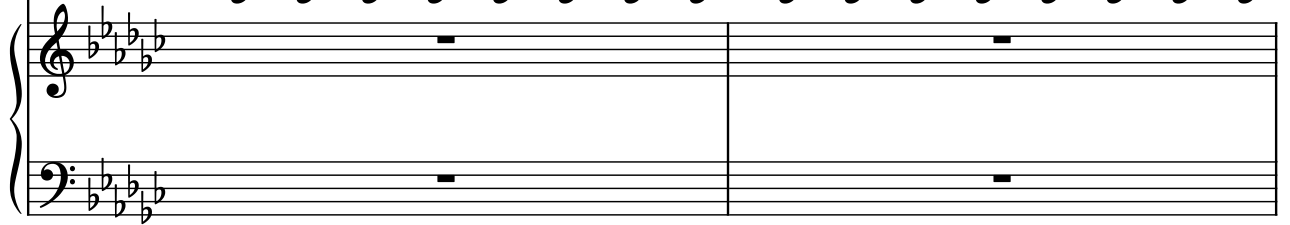
Synth.



Synth.



Synth.



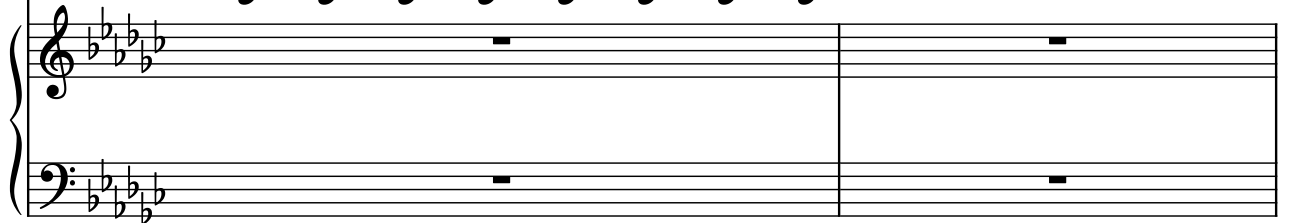
Synth.



Synth.



Synth.



6

Synth.

Synth.

Synth.

9

Synth.

Synth.

Synth.

12

Synth.

Synth.

Synth.

14

Synth.

Synth.

Synth.

16

Synth.

Synth.

Synth.

18

Synth.

Synth.

Synth.

19

Synth.

Synth.

Synth.

The image shows a musical score for three synth parts across two measures. Measure 19 (labeled '19' at the top left) contains three staves. The top staff, labeled 'Synth.', is in bass clef with a key signature of three flats (B-flat, E-flat, A-flat) and a 4/4 time signature. It features a sequence of eighth notes with dotted stems, starting on G2 and moving up stepwise to D3. The middle staff, also labeled 'Synth.', is in bass clef and features a continuous eighth-note arpeggiated pattern. The bottom staff, labeled 'Synth.', is a grand staff (treble and bass clefs) with a key signature of three flats. It contains a long, sustained whole note chord in the treble clef and a single eighth note in the bass clef. Measure 20 continues the patterns from measure 19. The top staff continues the eighth-note sequence. The middle staff continues the arpeggiated pattern. The bottom staff continues the sustained chord in the treble and adds a short eighth-note sequence in the bass. The piece concludes with a double bar line at the end of measure 20.