

♩ = 101

Measures 1-3 of the piece. The music is in 4/4 time with a key signature of three flats (B-flat, E-flat, A-flat). The right hand plays a steady eighth-note melody, while the left hand provides a harmonic accompaniment with chords and single notes.

Measures 4-6. Measure 4 begins with a measure rest in the right hand. The right hand enters in measure 5 with a descending eighth-note scale. The left hand continues its accompaniment.

Measures 7-8. The right hand features a series of chords and single notes, including a triplet of eighth notes in measure 8. The left hand maintains the accompaniment.

Measures 9-10. The right hand continues with a melodic line, featuring a triplet of eighth notes in measure 10. The left hand provides a steady accompaniment.

Measures 11-13. The right hand plays a descending eighth-note scale in measure 11, followed by a series of chords and single notes. The left hand continues the accompaniment.

9

Measures 9 and 10 of a musical score. The key signature has four flats (B-flat, E-flat, A-flat, D-flat). Measure 9 features a treble staff with a series of chords and a bass staff with a similar chordal texture. Measure 10 continues the progression with more complex chordal structures and some melodic movement in the bass staff.

11

Measures 11 and 12. Measure 11 shows a continuation of the chordal texture in both staves. Measure 12 introduces a more active bass line with eighth notes and a treble staff with a melodic line.

12

Measures 13 and 14. Measure 13 features a treble staff with a melodic line and a bass staff with a similar texture. Measure 14 continues the progression with more complex chordal structures and some melodic movement in the bass staff.

13

Measures 15 and 16. Measure 15 shows a continuation of the chordal texture in both staves. Measure 16 introduces a more active bass line with eighth notes and a treble staff with a melodic line.

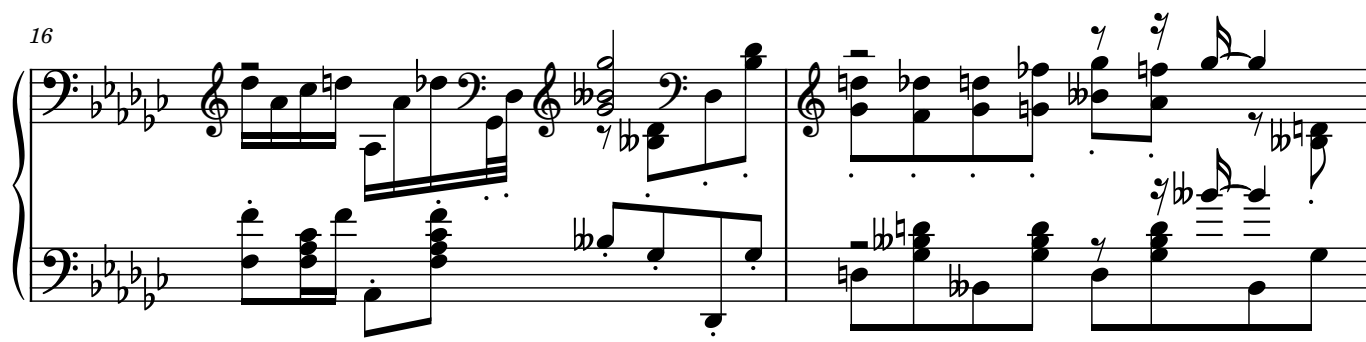
14

Measures 17 and 18. Measure 17 features a treble staff with a melodic line and a bass staff with a similar texture. Measure 18 continues the progression with more complex chordal structures and some melodic movement in the bass staff.

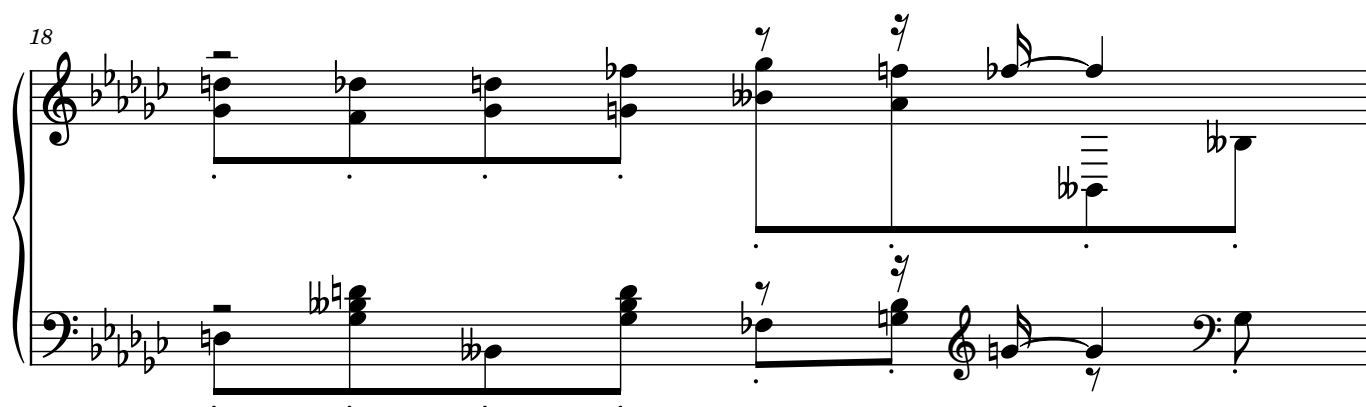
15



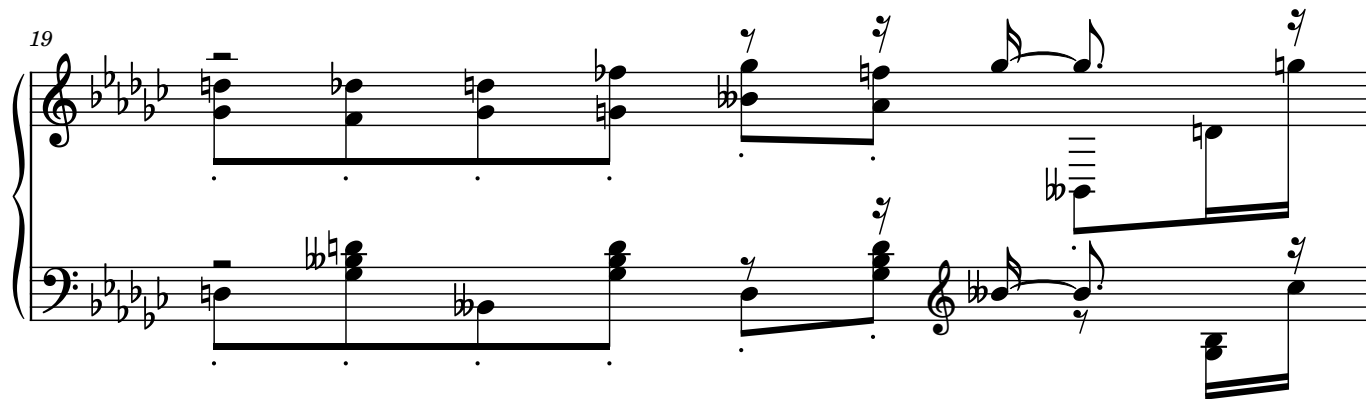
16



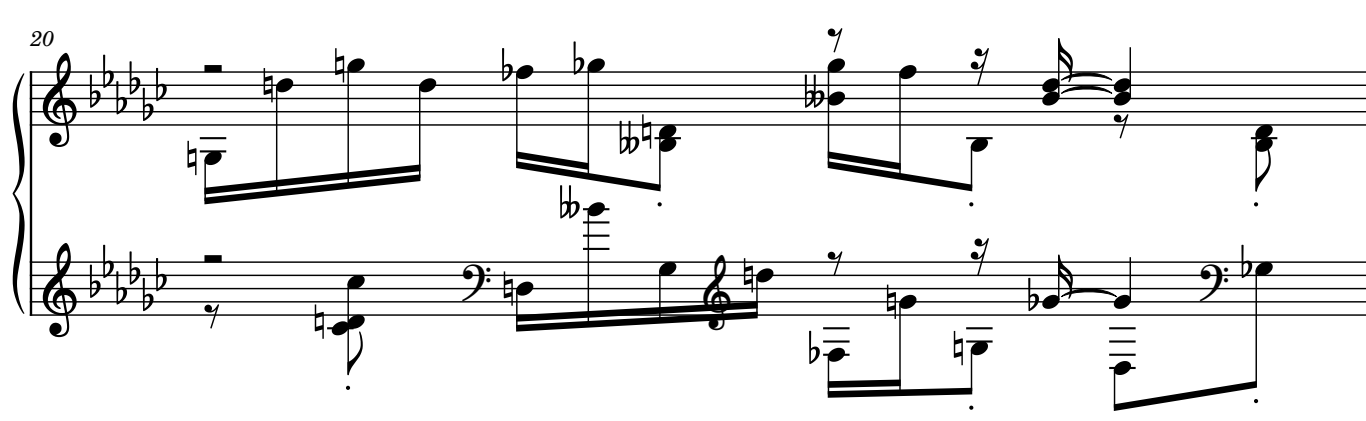
18



19



20



21

23

24

25

26

Detailed description: This image shows a piano score for measures 21 through 26. The music is written for two staves, treble and bass clef, in a key signature of three flats (B-flat, E-flat, A-flat). Measure 21 features a complex texture with many beamed sixteenth notes in the right hand and block chords in the left hand. Measures 22-23 show a continuation of this texture with some melodic movement in the right hand. Measure 24 has a more active right hand with many beamed sixteenth notes. Measure 25 shows a change in texture with a more melodic right hand and a steady bass line. Measure 26 concludes the system with a final melodic phrase in the right hand and a sustained bass line.

27



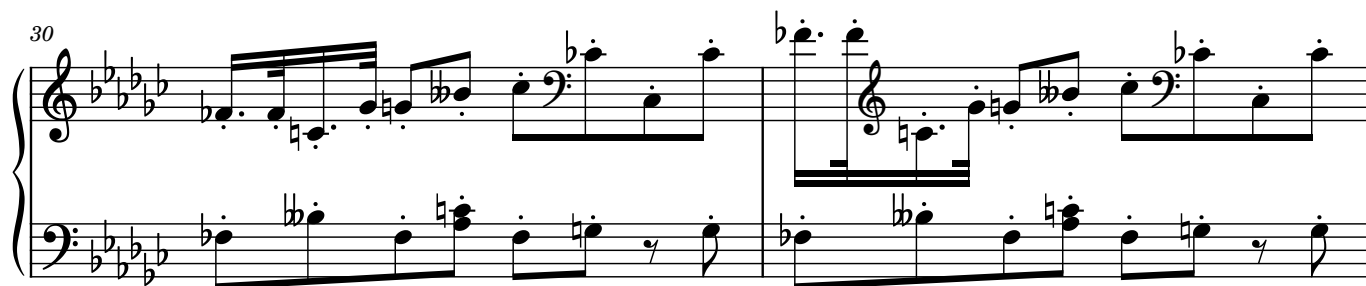
28



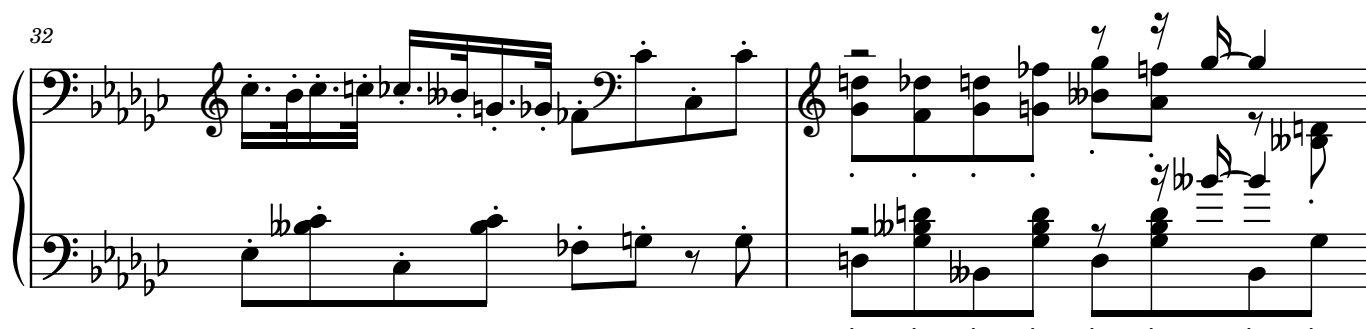
29



30



32



34

Measures 34-35 of a musical score in B-flat major (three flats). Measure 34 features a treble staff with a whole rest and a bass staff with a whole note chord of B-flat, D-flat, and F. Measure 35 continues with a treble staff containing a whole note chord of B-flat, D-flat, and F, and a bass staff with a whole note chord of B-flat, D-flat, and F. Both staves have a fermata over the final measure.

35

Measures 36-37 of a musical score in B-flat major (three flats). Measure 36 features a treble staff with a whole note chord of B-flat, D-flat, and F, and a bass staff with a whole note chord of B-flat, D-flat, and F. Measure 37 continues with a treble staff containing a whole note chord of B-flat, D-flat, and F, and a bass staff with a whole note chord of B-flat, D-flat, and F. Both staves have a fermata over the final measure.

36

Measures 38-39 of a musical score in B-flat major (three flats). Measure 38 features a treble staff with a whole note chord of B-flat, D-flat, and F, and a bass staff with a whole note chord of B-flat, D-flat, and F. Measure 39 continues with a treble staff containing a whole note chord of B-flat, D-flat, and F, and a bass staff with a whole note chord of B-flat, D-flat, and F. Both staves have a fermata over the final measure.

37

Measures 40-41 of a musical score in B-flat major (three flats). Measure 40 features a treble staff with a whole note chord of B-flat, D-flat, and F, and a bass staff with a whole note chord of B-flat, D-flat, and F. Measure 41 continues with a treble staff containing a whole note chord of B-flat, D-flat, and F, and a bass staff with a whole note chord of B-flat, D-flat, and F. Both staves have a fermata over the final measure.

39 7

This system contains measures 39 and 40. Measure 39 features a treble staff with a series of chords (F major, C major, F major, C major) and a bass staff with a series of chords (F major, C major, F major, C major). Measure 40 features a treble staff with a series of chords (F major, C major, F major, C major) and a bass staff with a series of chords (F major, C major, F major, C major). The key signature is one flat (B-flat major or F major).

40

This system contains measures 41 and 42. Measure 41 features a treble staff with a series of chords (F major, C major, F major, C major) and a bass staff with a series of chords (F major, C major, F major, C major). Measure 42 features a treble staff with a series of chords (F major, C major, F major, C major) and a bass staff with a series of chords (F major, C major, F major, C major). The key signature is one flat (B-flat major or F major).