

♩ = 120

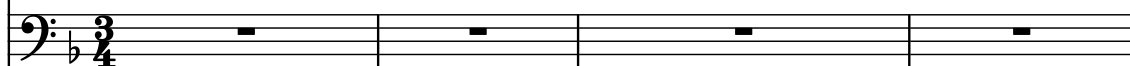
Electric Guitar



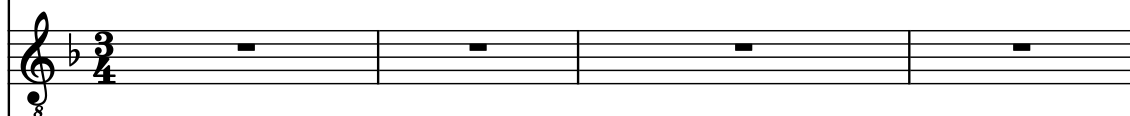
Electric Piano



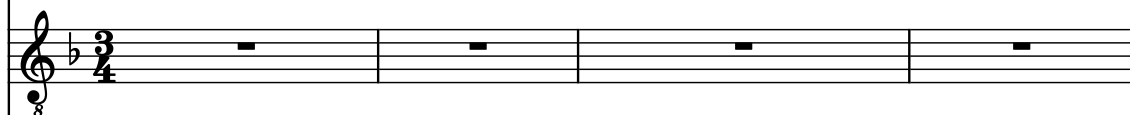
Electric Bass



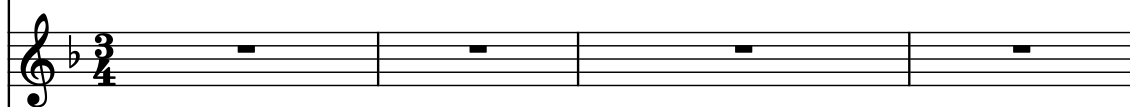
Electric Guitar



Electric Guitar



Pad Synthesizer



Drumset



5

El. Guit.

El. Pno.

El. B.

El. Guit.

El. Guit.

Synth.

D. Set

8

8

8

3

3

10

El. Guit.

El. Pno.

El. B.

El. Guit.

El. Guit.

Synth.

D. Set

This musical score page contains measures 10 through 13. The instruments are arranged in a multi-staff format. The top staff is for Electric Guitar (El. Guit.), which plays a melodic line with a long sustain in measure 10 and continues with eighth and sixteenth notes. The second staff is for Electric Piano (El. Pno.), which provides harmonic support with chords and moving lines. The third staff is for Electric Bass (El. B.), featuring a steady eighth-note bass line. The fourth staff is another Electric Guitar (El. Guit.) part, which remains silent (indicated by whole rests) in measures 10-13. The fifth staff is another Electric Guitar (El. Guit.) part, also silent. The sixth staff is for Synthesizer (Synth.), which is silent. The bottom staff is for the Drum Set (D. Set), which plays a complex rhythmic pattern including eighth notes, sixteenth notes, and rests.



20

El. Guit.

El. Pno.

El. B.

El. Guit.

El. Guit.

Synth.

D. Set

8

8

8

8

8

8

8

8

24

El. Guit.

El. Pno.

El. B.

El. Guit.

El. Guit.

Synth.

D. Set

This musical score page contains measures 24 through 28. The instruments are arranged in a stack: Electric Guitar (top), Electric Piano (middle), Electric Bass (below piano), and Drum Set (bottom). The Electric Guitar and Electric Piano parts are active, with the guitar playing chords and the piano playing a complex accompaniment. The Electric Bass and Drum Set parts are also active, with the bass playing a simple line and the drums providing a steady rhythm. The Electric Guitar and Electric Piano parts are in the key of B-flat major, and the Electric Bass and Drum Set parts are in the key of B-flat major. The Electric Guitar and Electric Piano parts are in the key of B-flat major, and the Electric Bass and Drum Set parts are in the key of B-flat major.

29

El. Guit.

El. Pno.

El. B.

El. Guit.

El. Guit.

Synth.

D. Set

The musical score for measures 29-33 is written for a band. The Electric Guitar (El. Guit.) and Electric Piano (El. Pno.) parts share a melodic line in the upper register, featuring a long note in measure 29. The Electric Bass (El. B.) part provides a bass line, also with a long note in measure 29. The Drums (D. Set) part features a rhythmic pattern with a long note in measure 29. The Electric Guitar (El. Guit.) and Electric Piano (El. Pno.) parts have a melodic line with a long note in measure 29. The Electric Bass (El. B.) part has a bass line with a long note in measure 29. The Drums (D. Set) part has a rhythmic pattern with a long note in measure 29.

34

El. Guit.

El. Pno.

El. B.

El. Guit.

El. Guit.

Synth.

D. Set

The musical score for measures 34-37 is as follows:

- Measure 34:** El. Guit. (Guitar solo), El. Pno. (Silent), El. B. (Bass line), El. Guit. (Guitar solo), El. Guit. (Silent), Synth. (Silent), D. Set (Drum set).
- Measure 35:** El. Guit. (Guitar solo), El. Pno. (Silent), El. B. (Bass line), El. Guit. (Guitar solo), El. Guit. (Silent), Synth. (Silent), D. Set (Drum set).
- Measure 36:** El. Guit. (Guitar solo), El. Pno. (Silent), El. B. (Bass line), El. Guit. (Guitar solo), El. Guit. (Silent), Synth. (Silent), D. Set (Drum set).
- Measure 37:** El. Guit. (Guitar solo), El. Pno. (Silent), El. B. (Bass line), El. Guit. (Guitar solo), El. Guit. (Silent), Synth. (Silent), D. Set (Drum set).



38

El. Guit.

El. Pno.

El. B.

El. Guit.

El. Guit.

Synth.

D. Set

This musical score page contains measures 38 through 41. The instruments are arranged in a multi-staff format. The Electric Guitar (top staff) plays a melodic line with eighth and sixteenth notes, including a triplet in measure 40. The Electric Piano (second staff) is silent. The Electric Bass (third staff) provides a rhythmic foundation with eighth notes and a triplet in measure 40. The Drum Set (bottom staff) plays a consistent pattern of eighth notes with cross-sticks. The Synth. staff is also silent. The key signature has one flat (Bb), and the time signature is 8/8.

42

El. Guit.

El. Pno.

El. B.

El. Guit.

El. Guit.

Synth.

D. Set

This musical score page contains measures 42 through 45. The instruments are arranged in a multi-stem system. The Electric Guitar (top) plays a melodic line with a key signature change to one sharp in measure 43. The Electric Piano (second) has a treble staff with rests and a bass staff with a walking bass line. The Electric Bass (third) plays a melodic line with a key signature change to one sharp in measure 43. The second Electric Guitar (fourth) plays a rhythmic pattern with eighth notes and sixteenth notes. The third Electric Guitar (fifth) has a treble staff with rests and a bass staff with a walking bass line. The Synth (sixth) has a treble staff with rests and a bass staff with a walking bass line. The Drum Set (seventh) plays a complex rhythmic pattern with eighth notes and sixteenth notes.

47

El. Guit.

El. Pno.

El. B.

El. Guit.

El. Guit.

Synth.

D. Set

This musical score page contains measures 47 through 51. The instruments are arranged in a multi-staff format. The Electric Guitar (top staff) plays a melodic line with a key signature of one flat and a common time signature. The Electric Piano (second staff) provides harmonic support with chords and arpeggios. The Electric Bass (third staff) plays a steady eighth-note rhythm. The Drum Set (bottom staff) features a complex pattern of eighth and sixteenth notes, with some measures containing rests. The score is written in a standard musical notation style with a key signature of one flat and a common time signature.

52

El. Guit.

El. Pno.

El. B.

El. Guit.

El. Guit.

Synth.

D. Set

The musical score for measures 52-56 is written for a band. The Electric Guitar part consists of two staves, both with a capo on the 8th fret. The first staff has a treble clef and a key signature of one flat. The second staff has a treble clef and a key signature of one flat. The Electric Piano part consists of two staves. The first staff has a treble clef and a key signature of one flat. The second staff has a bass clef and a key signature of one flat. The Electric Bass part is a single staff with a bass clef and a key signature of one flat. The Drums part is a single staff with a drum clef. The score shows a progression of chords and bass lines, with some melodic lines in the electric guitar and bass. The drums play a steady pattern of eighth notes.

57

El. Guit.

El. Pno.

El. B.

El. Guit.

El. Guit.

Synth.

D. Set

62

El. Guit.

El. Pno.

El. B.

El. Guit.

El. Guit.

Synth.

D. Set

This musical score page contains measures 62 through 66. The instruments are arranged in a multi-staff format. The top staff is for Electric Guitar (El. Guit.) in treble clef, featuring a melodic line with eighth and sixteenth notes, some tied across measures, and a final half note. The second staff is for Electric Piano (El. Pno.) in grand staff, with the right hand playing chords and the left hand playing a bass line. The third staff is for Electric Bass (El. B.) in bass clef, following a similar bass line pattern. The fourth and fifth staves are additional Electric Guitar (El. Guit.) parts, both in treble clef and mostly containing rests. The sixth staff is for Synthesizer (Synth.) in treble clef, also containing rests. The bottom staff is for the Drum Set (D. Set) in a standard drum notation, showing a rhythmic pattern of eighth and sixteenth notes.

67

El. Guit.

El. Pno.

El. B.

El. Guit.

El. Guit.

Synth.

D. Set

71

El. Guit.

El. Pno.

El. B.

El. Guit.

El. Guit.

Synth.

D. Set

71

72

73

74



75

El. Guit.

El. Pno.

El. B.

El. Guit.

El. Guit.

Synth.

D. Set

The musical score for page 17, starting at measure 75, is arranged for seven instruments. The key signature is one flat (B-flat). The first staff (El. Guit.) is in treble clef with a 'g' time signature. The second staff (El. Pno.) is a grand staff with treble and bass clefs. The third staff (El. B.) is in bass clef. The fourth staff (El. Guit.) is in treble clef with a 'g' time signature. The fifth staff (El. Guit.) is in treble clef with a 'g' time signature. The sixth staff (Synth.) is in treble clef. The seventh staff (D. Set) is in double bar line with a 'g' time signature. The music includes various notes, rests, and a triplet in the fourth staff.

79

El. Guit.

El. Pno.

El. B.

El. Guit.

El. Guit.

Synth.

D. Set

82

El. Guit.

El. Pno.

El. B.

El. Guit.

El. Guit.

Synth.

D. Set

8

3

3

8

8

84

El. Guit.

El. Pno.

El. B.

El. Guit.

El. Guit.

Synth.

D. Set

This musical score page contains measures 84 through 87. The instruments are arranged in a multi-staff format. The top staff is for El. Guit. (Electric Guitar), followed by El. Pno. (Electric Piano) in grand staff notation, El. B. (Electric Bass), another El. Guit. staff, a third El. Guit. staff, Synth. (Synthesizer), and D. Set (Drum Set) at the bottom. Measure 84 shows the first El. Guit. playing a chord, while the others are silent. In measure 85, the first El. Guit. plays a melodic line, the El. B. plays a triplet of eighth notes, and the second El. Guit. plays a triplet of eighth notes. Measures 86 and 87 continue these patterns, with the first El. Guit. playing sustained notes and the El. B. and second El. Guit. playing rhythmic patterns. The D. Set part features a consistent drum pattern throughout the measures.

88

El. Guit.

El. Pno.

El. B.

El. Guit.

El. Guit.

Synth.

D. Set

This musical score page contains measures 88 through 91. The instruments are arranged in a multi-stem system. The Electric Guitar (top) plays a melodic line with a key signature of one flat and a 3/4 time signature. The Electric Piano (second staff) provides harmonic support with chords and single notes. The Electric Bass (third staff) plays a bass line with eighth and quarter notes. The Drum Set (bottom) provides a steady rhythm with a pattern of eighth and quarter notes. The score includes various musical notations such as notes, rests, accidentals, and a triplet in the fifth staff.

92

El. Guit.

El. Pno.

El. B.

El. Guit.

El. Guit.

Synth.

D. Set

The musical score for page 22, measures 92-96, is as follows:

- Measure 92:** El. Guit. plays a melodic line with eighth and quarter notes. El. Pno. plays a rhythmic pattern of eighth notes. El. B. plays a melodic line with eighth and quarter notes. D. Set has a double bar line.
- Measure 93:** All instruments are at rest.
- Measure 94:** All instruments are at rest.
- Measure 95:** All instruments are at rest.
- Measure 96:** El. B. plays a final melodic line with eighth and quarter notes. All other instruments are at rest.

97

El. Guit.

El. Pno.

El. B.

El. Guit.

El. Guit.

Synth.

D. Set

The musical score for page 23, measures 97-102, is written for a multi-instrument ensemble. The key signature is one flat (B-flat). The score consists of seven staves: El. Guit., El. Pno., El. B., El. Guit., El. Guit., Synth., and D. Set. Measure 97 begins with a guitar solo in the first staff. The piano part (El. Pno.) provides a steady eighth-note accompaniment. The bass line (El. B.) is active with eighth notes. The second guitar part (El. Guit.) has a melodic line with a triplet in measure 102. The third guitar part (El. Guit.) is mostly silent. The synth part (Synth.) is silent. The drum set part (D. Set) has a consistent pattern of eighth notes and rests.

103

El. Guit.

El. Pno.

El. B.

El. Guit.

El. Guit.

Synth.

D. Set

8

8

3

8

8



107

El. Guit.

El. Pno.

El. B.

El. Guit.

El. Guit.

Synth.

D. Set

111

El. Guit.

El. Pno.

El. B.

El. Guit.

El. Guit.

Synth.

D. Set

8

8

8

8

8

3

3

3

3

115

El. Guit.

El. Pno.

El. B.

El. Guit.

El. Guit.

Synth.

D. Set

119

El. Guit.

El. Pno.

El. B.

El. Guit.

El. Guit.

Synth.

D. Set

The musical score for measures 119-122 is as follows:

- Measure 119:** El. Guit. (treble clef, key of Bb) plays a solo line starting with a triplet of eighth notes (Bb, Ab, Gb). El. Pno. (grand staff) is silent. El. B. (bass clef, key of Bb) plays a line starting with a quarter note (Bb). El. Guit. (treble clef, key of Bb) plays a line starting with a quarter note (Bb). El. Guit. (treble clef, key of Bb) is silent. Synth. (treble clef, key of Bb) is silent. D. Set (drum set) plays a line starting with a quarter note (Bb).
- Measure 120:** El. Guit. (treble clef, key of Bb) plays a solo line starting with a triplet of eighth notes (Bb, Ab, Gb). El. Pno. (grand staff) is silent. El. B. (bass clef, key of Bb) plays a line starting with a quarter note (Bb). El. Guit. (treble clef, key of Bb) plays a line starting with a quarter note (Bb). El. Guit. (treble clef, key of Bb) is silent. Synth. (treble clef, key of Bb) is silent. D. Set (drum set) plays a line starting with a quarter note (Bb).
- Measure 121:** El. Guit. (treble clef, key of Bb) plays a solo line starting with a triplet of eighth notes (Bb, Ab, Gb). El. Pno. (grand staff) is silent. El. B. (bass clef, key of Bb) plays a line starting with a quarter note (Bb). El. Guit. (treble clef, key of Bb) plays a line starting with a quarter note (Bb). El. Guit. (treble clef, key of Bb) is silent. Synth. (treble clef, key of Bb) is silent. D. Set (drum set) plays a line starting with a quarter note (Bb).
- Measure 122:** El. Guit. (treble clef, key of Bb) plays a solo line starting with a triplet of eighth notes (Bb, Ab, Gb). El. Pno. (grand staff) is silent. El. B. (bass clef, key of Bb) plays a line starting with a quarter note (Bb). El. Guit. (treble clef, key of Bb) plays a line starting with a quarter note (Bb). El. Guit. (treble clef, key of Bb) is silent. Synth. (treble clef, key of Bb) is silent. D. Set (drum set) plays a line starting with a quarter note (Bb).

123

El. Guit.

El. Pno.

El. B.

El. Guit.

El. Guit.

Synth.

D. Set

The musical score for page 29, measures 123-126, is written for a rock band. The key signature has one flat (B-flat), and the time signature is 4/4. The score includes parts for Electric Guitar (El. Guit.), Electric Piano (El. Pno.), Electric Bass (El. B.), and Drums (D. Set). The Electric Guitar part starts with a melodic line in measure 123, featuring a triplet in measure 125. The Electric Piano part is mostly silent, with a few notes in measure 124. The Electric Bass part has a complex rhythmic pattern with triplets in measures 123 and 125. The Drums part provides a steady beat with various drum sounds indicated by 'x' marks.

127

El. Guit.

El. Pno.

El. B.

El. Guit.

El. Guit.

Synth.

D. Set

8

8

8

3

3

131

El. Guit.

El. Pno.

El. B.

El. Guit.

El. Guit.

Synth.

D. Set

The musical score for page 31, measures 131-133, is as follows:

- Measure 131:** El. Guit. plays a melodic line with eighth notes and a triplet. El. B. plays a bass line with eighth notes. El. Guit. (bottom) plays a rhythmic pattern with eighth notes. D. Set plays a pattern with eighth notes and a triplet.
- Measure 132:** El. Guit. plays a melodic line with eighth notes. El. B. plays a bass line with eighth notes. El. Guit. (bottom) plays a rhythmic pattern with eighth notes. D. Set plays a pattern with eighth notes and a triplet.
- Measure 133:** El. Guit. plays a melodic line with eighth notes. El. B. plays a bass line with eighth notes. El. Guit. (bottom) plays a rhythmic pattern with eighth notes. D. Set plays a pattern with eighth notes and a triplet.

134

El. Guit.

El. Pno.

El. B.

El. Guit.

El. Guit.

Synth.

D. Set

The musical score for measures 134-137 is written for a multi-instrument ensemble. The key signature is one flat (B-flat). The score includes parts for El. Guit., El. Pno., El. B., El. Guit., El. Guit., Synth., and D. Set. Measure 134 begins with a guitar solo in the first El. Guit. part. The El. Pno. part is silent throughout. The El. B. part features a bass line with eighth notes and triplets. The second El. Guit. part has a tremolo effect. The third El. Guit. part is silent. The Synth. part is silent. The D. Set part features a pattern of eighth notes and triplets.



138

El. Guit.

El. Pno.

El. B.

El. Guit. 8

El. Guit. 8

Synth.

D. Set

142

El. Guit.

El. Pno.

El. B.

El. Guit.

El. Guit.

Synth.

D. Set

8

8

8

3

145

El. Guit.

El. Pno.

El. B.

El. Guit.

El. Guit.

Synth.

D. Set

3

3

3

149

El. Guit.

El. Pno.

El. B.

El. Guit.

El. Guit.

Synth.

D. Set