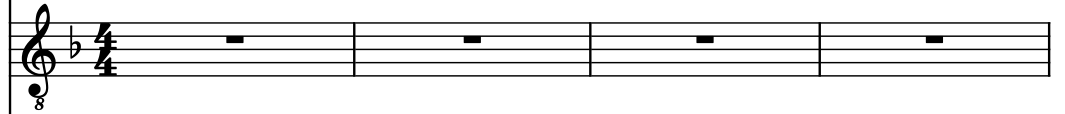


♩ = 150

Electric Guitar, Guitar 1



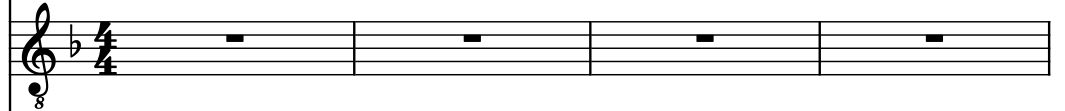
Electric Guitar



Electric Guitar, Guitar 2



Electric Guitar



5-str. Electric Bass, Bass



Drumset, Percussion



Electric Guitar, Guitar 3



5

El. Guit.

El. Guit.

El. Guit.

El. Guit.

El. B.

D. Set

El. Guit.

9

El. Guit.

El. Guit.

El. Guit.

El. Guit.

El. B.

D. Set

El. Guit.

8

8

8

8

8

8

8

11

El. Guit.

El. Guit.

El. Guit.

El. Guit.

El. B.

D. Set

El. Guit.

13

El. Guit.

El. Guit.

El. Guit.

El. Guit.

El. B.

D. Set

El. Guit.

15

El. Guit.

El. Guit.

El. Guit.

El. Guit.

El. B.

D. Set

El. Guit.

8

8

8

8

8

8

8

17

El. Guit.

El. Guit.

El. Guit.

El. Guit.

El. B.

D. Set

El. Guit.

19

El. Guit.

El. Guit.

El. Guit.

El. Guit.

El. B.

D. Set

El. Guit.

8

8

8

8

8

8

8

21

El. Guit.

El. Guit.

El. Guit.

El. Guit.

El. B.

D. Set

El. Guit.

23

El. Guit.

El. Guit.

El. Guit.

El. Guit.

El. B.

D. Set

El. Guit.

25

El. Guit.

El. Guit.

El. Guit.

El. Guit.

El. B.

D. Set

El. Guit.

31

El. Guit.

El. Guit.

El. Guit.

El. Guit.

El. B.

D. Set

El. Guit.

37



El. Guit.

El. Guit.

El. Guit.

El. Guit.

El. B.

D. Set

El. Guit.

39

El. Guit.

El. Guit.

El. Guit.

El. Guit.

El. B.

D. Set

El. Guit.

41

El. Guit.

El. Guit.

El. Guit.

El. Guit.

El. B.

D. Set

El. Guit.

Detailed description: The musical score consists of five staves. The first three staves are for Electric Guitar (El. Guit.) in treble clef, the fourth is for Electric Bass (El. B.) in bass clef, and the fifth is for Drums (D. Set) in a standard drum notation. The time signature is 8/8, indicated by a '41' at the start of the first staff and a '8' below the first staff. The key signature has one flat (B-flat). The first staff (El. Guit.) plays a complex melodic line with many beamed eighth and sixteenth notes. The second staff (El. Guit.) is mostly empty with a few rests. The third staff (El. Guit.) plays a simple harmonic line with dotted eighth notes and eighth notes. The fourth staff (El. B.) plays a steady eighth-note bass line. The fifth staff (D. Set) shows a drum pattern with various note values and rests, including asterisks indicating specific drum sounds. The bottom staff (El. Guit.) plays a complex melodic line similar to the first staff.

43

El. Guit.

El. Guit.

El. Guit.

El. Guit.

El. B.

D. Set

El. Guit.

8

8

8

8

8

8

8

45

El. Guit.

El. Guit.

El. Guit.

El. Guit.

El. B.

D. Set

El. Guit.

8

8

8

8

8

8

8

47

El. Guit.

El. Guit.

El. Guit.

El. Guit.

El. B.

D. Set

El. Guit.

49

El. Guit.

El. Guit.

El. Guit.

El. Guit.

El. B.

D. Set

El. Guit.

8

8

8

8

8

8

8

51

El. Guit.

El. Guit.

El. Guit.

El. Guit.

El. B.

D. Set

El. Guit.

53

El. Guit.

El. Guit.

El. Guit.

El. Guit.

El. B.

D. Set

El. Guit.

55

El. Guit.

El. Guit.

El. Guit.

El. Guit.

El. B.

D. Set

El. Guit.

8

8

8

8

8

8

8

61

El. Guit. 8

El. Guit. 8

El. Guit. 8

El. Guit. 8

El. B.

D. Set

El. Guit. 8

67

The musical score for measures 67-69 consists of six staves. The first four staves are for Electric Guitars (El. Guit.), the fifth is for Electric Bass (El. B.), and the sixth is for Drum Set (D. Set). The key signature has one flat (B-flat).
- **El. Guit. 1:** Measures 67-69 feature a continuous eighth-note pattern in the treble clef, with a final measure ending on a whole note chord.
- **El. Guit. 2:** Measures 67-69 are marked with a whole rest, indicating the guitar is silent.
- **El. Guit. 3:** Measures 67-69 feature a melodic line in the treble clef, starting with eighth notes and ending with a quarter note.
- **El. Guit. 4:** Measures 67-69 feature a bass line in the treble clef, primarily consisting of whole notes and half notes.
- **El. B.:** Measures 67-69 feature a continuous eighth-note pattern in the bass clef.
- **D. Set:** Measures 67-69 feature a complex drum pattern, including eighth notes, sixteenth notes, and rests, with a final measure ending on a quarter note.

70

El. Guit.

El. Guit.

El. Guit.

El. Guit.

El. B.

D. Set

El. Guit.

73

El. Guit.

El. Guit.

El. Guit.

El. Guit.

El. B.

D. Set

El. Guit.

75

El. Guit.

El. Guit.

El. Guit.

El. Guit.

El. B.

D. Set

El. Guit.

77

El. Guit.

El. Guit.

El. Guit.

El. Guit.

El. B.

D. Set

El. Guit.

79

El. Guit.

El. Guit.

El. Guit.

El. Guit.

El. B.

D. Set

El. Guit.

81

El. Guit.

El. Guit.

El. Guit.

El. Guit.

El. B.

D. Set

El. Guit.

8

8

8

8

8

8

8

85

El. Guit.

El. Guit.

El. Guit.

El. Guit.

El. B.

D. Set

El. Guit.

89

El. Guit.

El. Guit.

El. Guit.

El. Guit.

El. B.

D. Set

El. Guit.

The musical score for measures 89-91 is written for an electric guitar ensemble and an electric bass. The key signature is one flat (Bb). The score is divided into three systems of three staves each. The first system (measures 89-91) features a complex melodic line in the top guitar staff, with the other guitar staves providing harmonic support. The electric bass staff provides a steady bass line. The drum set staff shows a pattern of eighth and sixteenth notes. The second system (measures 92-94) continues the melodic development in the top guitar staff, with the other guitar staves providing harmonic support. The electric bass staff provides a steady bass line. The drum set staff shows a pattern of eighth and sixteenth notes. The third system (measures 95-97) continues the melodic development in the top guitar staff, with the other guitar staves providing harmonic support. The electric bass staff provides a steady bass line. The drum set staff shows a pattern of eighth and sixteenth notes.

92

El. Guit.

El. Guit.

El. Guit.

El. Guit.

El. B.

D. Set

El. Guit.

8

8

8

8

8

8

8

95

El. Guit.

El. Guit.

El. Guit.

El. Guit.

El. B.

D. Set

El. Guit.

98

El. Guit.

El. Guit.

El. Guit.

El. Guit.

El. B.

D. Set

El. Guit.

The musical score for page 35, measures 98-101, is written for a five-piece band. The key signature has one flat (B-flat). The score is divided into two systems of two measures each. The instruments and their parts are as follows:

- Electric Guitars (5 staves):** The first, third, and fifth staves play a complex, syncopated melody with many beamed sixteenth and thirty-second notes. The second and fourth staves are mostly silent, with a few notes in the first measure of the first system.
- Electric Bass (1 staff):** Plays a steady eighth-note pattern throughout the piece.
- Double Bass (1 staff):** Plays a complex, syncopated melody with many beamed sixteenth and thirty-second notes.

100

El. Guit.

El. Guit.

El. Guit.

El. Guit.

El. B.

D. Set

El. Guit.

102

El. Guit.

El. Guit.

El. Guit.

El. Guit.

El. B.

D. Set

El. Guit.

104

El. Guit.

El. Guit.

El. Guit.

El. Guit.

El. B.

D. Set

El. Guit.

The musical score for page 38, measures 104-107, is arranged in two systems. Each system contains five electric guitar staves, one electric bass staff, and one double bass staff. The key signature is one flat (B-flat). The electric guitar parts consist of a main melodic line with eighth-note triplets and a supporting bass line with eighth-note chords. The electric bass part plays a steady eighth-note line. The double bass part features a complex rhythmic pattern with eighth and sixteenth notes, some marked with 'x' for mutes. The score is divided into two systems, each containing two staves.

106

El. Guit.

El. Guit.

El. Guit.

El. Guit.

El. B.

D. Set

El. Guit.

108

El. Guit.

El. Guit.

El. Guit.

El. Guit.

El. B.

D. Set

El. Guit.

8

8

8

8

8

8