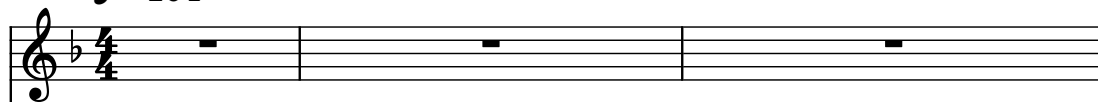


♩ = 104

Honky Tonk Piano



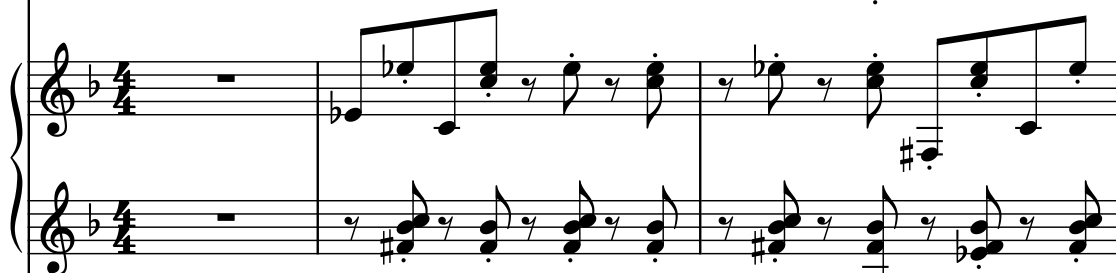
Drumset



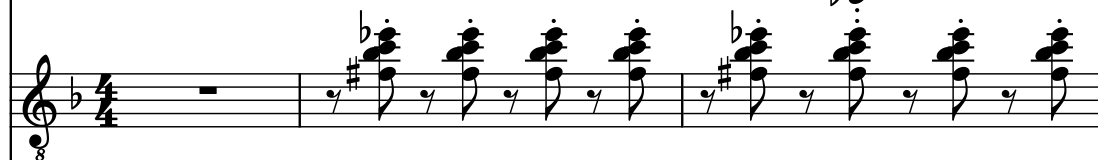
5-str. Electric Bass



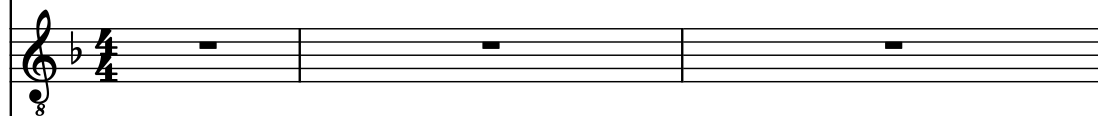
Pad Synthesizer



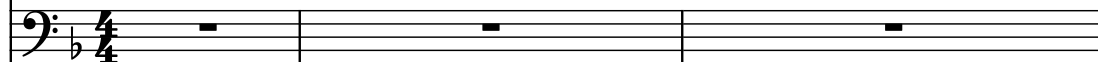
Electric Guitar



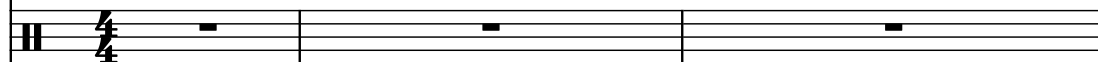
Acoustic Guitar



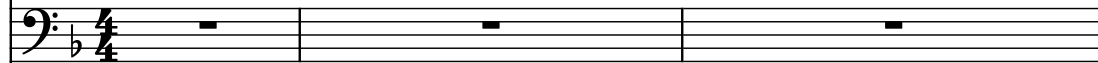
Pad Synthesizer



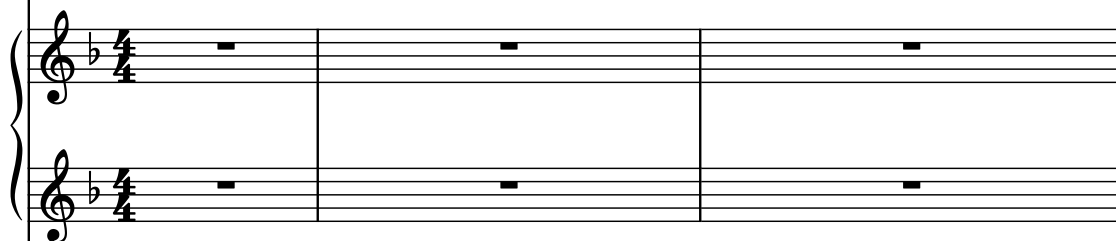
Drumset



Electric Bass



Pad Synthesizer



Electric Guitar



4

Hnk. Pno.

D. Set

El. B.

Synth.

El. Guit.

Guit.

Synth.

D. Set

El. B.

Synth.

El. Guit.

This musical score page contains measures 4, 5, and 6 of a piece. The instruments are arranged in a stack of staves. The first three measures are active, while the last three are empty staves. The notation includes various musical symbols such as clefs, key signatures, and note values.

Measure 4: Hnk. Pno. has a whole rest. D. Set has a series of eighth notes with 'x' marks. El. B. has a half note. Synth. (piano) has a complex chordal structure. El. Guit. has a series of eighth notes. Guit. has a whole rest. Synth. (bass) has a whole rest. D. Set has a whole rest. El. B. has a whole rest. Synth. (piano) has a whole rest. El. Guit. has a whole rest.

Measure 5: Hnk. Pno. has a whole rest. D. Set has a series of eighth notes with 'x' marks. El. B. has a half note. Synth. (piano) has a complex chordal structure. El. Guit. has a series of eighth notes. Guit. has a whole rest. Synth. (bass) has a whole rest. D. Set has a whole rest. El. B. has a whole rest. Synth. (piano) has a whole rest. El. Guit. has a whole rest.

Measure 6: Hnk. Pno. has a whole rest. D. Set has a series of eighth notes with 'x' marks. El. B. has a half note. Synth. (piano) has a complex chordal structure. El. Guit. has a series of eighth notes. Guit. has a whole rest. Synth. (bass) has a whole rest. D. Set has a whole rest. El. B. has a whole rest. Synth. (piano) has a whole rest. El. Guit. has a whole rest.

7

Hnk. Pno.

D. Set

El. B.

Synth.

El. Guit.

Guit.

Synth.

D. Set

El. B.

Synth.

El. Guit.

10

Hnk. Pno.

D. Set

El. B.

Synth.

El. Guit.

Guit.

Synth.

D. Set

El. B.

Synth.

El. Guit.

The musical score for measures 10-12 features the following instruments and notation:

- Hnk. Pno.:** Treble and bass clefs, key of B-flat. Measure 10: Treble has eighth notes (Bb, A, G, F, E, D, C, Bb); bass has eighth notes (Bb, A, G, F, E, D, C, Bb). Measure 11: Treble has eighth notes (Bb, A, G, F, E, D, C, Bb); bass has eighth notes (Bb, A, G, F, E, D, C, Bb). Measure 12: Treble has eighth notes (Bb, A, G, F, E, D, C, Bb); bass has eighth notes (Bb, A, G, F, E, D, C, Bb).
- D. Set:** Treble clef, key of B-flat. Measure 10: Treble has eighth notes (Bb, A, G, F, E, D, C, Bb). Measure 11: Treble has eighth notes (Bb, A, G, F, E, D, C, Bb). Measure 12: Treble has eighth notes (Bb, A, G, F, E, D, C, Bb).
- El. B.:** Bass clef, key of B-flat. Measure 10: Bass has eighth notes (Bb, A, G, F, E, D, C, Bb). Measure 11: Bass has eighth notes (Bb, A, G, F, E, D, C, Bb). Measure 12: Bass has eighth notes (Bb, A, G, F, E, D, C, Bb).
- Synth. (first staff):** Treble clef, key of B-flat. Measure 10: Treble has eighth notes (Bb, A, G, F, E, D, C, Bb). Measure 11: Treble has eighth notes (Bb, A, G, F, E, D, C, Bb). Measure 12: Treble has eighth notes (Bb, A, G, F, E, D, C, Bb).
- Synth. (second staff):** Treble clef, key of B-flat. Measure 10: Treble has eighth notes (Bb, A, G, F, E, D, C, Bb). Measure 11: Treble has eighth notes (Bb, A, G, F, E, D, C, Bb). Measure 12: Treble has eighth notes (Bb, A, G, F, E, D, C, Bb).
- El. Guit.:** Treble clef, key of B-flat. Measure 10: Treble has eighth notes (Bb, A, G, F, E, D, C, Bb). Measure 11: Treble has eighth notes (Bb, A, G, F, E, D, C, Bb). Measure 12: Treble has eighth notes (Bb, A, G, F, E, D, C, Bb). A 'g' marking is present below the staff.
- Guit.:** Treble clef, key of B-flat. Empty staff.
- Synth. (third staff):** Bass clef, key of B-flat. Empty staff.
- D. Set:** Treble clef, key of B-flat. Empty staff.
- El. B.:** Bass clef, key of B-flat. Empty staff.
- Synth. (fourth staff):** Treble clef, key of B-flat. Empty staff.
- Synth. (fifth staff):** Treble clef, key of B-flat. Empty staff.
- El. Guit.:** Treble clef, key of B-flat. Empty staff.

13

Handwritten musical score for a multi-instrument ensemble, page 16. The score is written for two systems of staves, each containing six staves. The instruments are labeled on the left: Hnk. Pno., D. Set, El. B., Synth., El. Guit., and Guit. (acoustic guitar). The notation includes various musical symbols such as notes, rests, and dynamic markings.

The first system (measures 1-2) shows active notation for Hnk. Pno., D. Set, El. B., Synth., and El. Guit. The second system (measures 3-4) shows mostly rests for all instruments, indicating a change in the musical texture or a transition.

18

Hnk. Pno.

D. Set

El. B.

Synth.

El. Guit.

Guit.

Synth.

D. Set

El. B.

Synth.

El. Guit.

The musical score for page 18, system 7, features the following instruments and parts:

- Hnk. Pno.**: Treble and bass clef. The treble staff has a whole note chord (F4, A4, C5) and a half note chord (F4, A4, C5). The bass staff has a whole note chord (F3, A3, C4) and a half note chord (F3, A3, C4).
- D. Set**: Double bar line.
- El. B.**: Bass clef. The staff has a whole note chord (F3, A3, C4) and a half note chord (F3, A3, C4).
- Synth.**: Grand staff (treble and bass clefs). The treble staff has a whole note chord (F4, A4, C5) and a half note chord (F4, A4, C5). The bass staff has a whole note chord (F3, A3, C4) and a half note chord (F3, A3, C4).
- El. Guit.**: Treble clef. The staff has a whole note chord (F4, A4, C5) and a half note chord (F4, A4, C5). An 8va marking is present.
- Guit.**: Treble clef. The staff has a whole note chord (F4, A4, C5) and a half note chord (F4, A4, C5). An 8va marking is present.
- Synth.**: Grand staff (treble and bass clefs). The treble staff has a whole note chord (F4, A4, C5) and a half note chord (F4, A4, C5). The bass staff has a whole note chord (F3, A3, C4) and a half note chord (F3, A3, C4).
- D. Set**: Double bar line.
- El. B.**: Bass clef. The staff has a whole note chord (F3, A3, C4) and a half note chord (F3, A3, C4).
- Synth.**: Grand staff (treble and bass clefs). The treble staff has a whole note chord (F4, A4, C5) and a half note chord (F4, A4, C5). The bass staff has a whole note chord (F3, A3, C4) and a half note chord (F3, A3, C4).
- El. Guit.**: Treble clef. The staff has a whole note chord (F4, A4, C5) and a half note chord (F4, A4, C5). An 8va marking is present.

19

Hnk. Pno.

D. Set

El. B.

Synth.

El. Guit.

Guit.

Synth.

D. Set

El. B.

Synth.

El. Guit.

This musical score page contains measures 19 through 22. The instruments are arranged in a grand staff with the following parts: Hnk. Pno. (Horn & Piano), D. Set (Drum Set), El. B. (Electric Bass), Synth. (Synthesizer), El. Guit. (Electric Guitar), Guit. (Guitar), and another El. B. (Electric Bass) part. The key signature is one flat (B-flat). Measure 19 shows active notation for Hnk. Pno., D. Set, El. B., Synth., and El. Guit. The Synth. part features a triplet of eighth notes. Measures 20, 21, and 22 show the continuation of these parts, with the Synth. part having a triplet of eighth notes in measure 21. The Guit. and the second El. B. part are silent throughout the measures shown.

20

Hnk. Pno.

D. Set

El. B.

Synth.

El. Guit.

Guit.

Synth.

D. Set

El. B.

Synth.

El. Guit.

The musical score for page 20 is arranged in 12 staves. The instruments are: Hnk. Pno. (Harp Piano), D. Set (Drum Set), El. B. (Electric Bass), Synth. (Synthesizer), El. Guit. (Electric Guitar), Guit. (Acoustic Guitar), Synth. (Synthesizer), D. Set (Drum Set), El. B. (Electric Bass), Synth. (Synthesizer), and El. Guit. (Electric Guitar). The score begins with a treble clef and a key signature of one flat (B-flat). The Hnk. Pno. staff has a treble clef and a key signature of one flat. The D. Set staff has a double bar line. The El. B. staff has a bass clef and a key signature of one flat. The Synth. staff has a treble clef and a key signature of one flat. The El. Guit. staff has a treble clef and a key signature of one flat. The Guit. staff has a treble clef and a key signature of one flat. The Synth. staff has a bass clef and a key signature of one flat. The D. Set staff has a double bar line. The El. B. staff has a bass clef and a key signature of one flat. The Synth. staff has a treble clef and a key signature of one flat. The El. Guit. staff has a treble clef and a key signature of one flat. The score shows a sequence of musical notation across 12 staves, with some staves containing rests and others containing active musical notation. The Hnk. Pno. staff has a treble clef and a key signature of one flat. The D. Set staff has a double bar line. The El. B. staff has a bass clef and a key signature of one flat. The Synth. staff has a treble clef and a key signature of one flat. The El. Guit. staff has a treble clef and a key signature of one flat. The Guit. staff has a treble clef and a key signature of one flat. The Synth. staff has a bass clef and a key signature of one flat. The D. Set staff has a double bar line. The El. B. staff has a bass clef and a key signature of one flat. The Synth. staff has a treble clef and a key signature of one flat. The El. Guit. staff has a treble clef and a key signature of one flat.

21

Hnk. Pno.

D. Set

El. B.

Synth.

El. Guit.

Guit.

Synth.

D. Set

El. B.

Synth.

El. Guit.

Measures 21-24 are shown. The Hnk. Pno. part features a melodic line with eighth notes and a descending line. The D. Set part has a rhythmic pattern with eighth notes and rests. The El. B. part has a simple bass line. The Synth. (piano) part has a complex texture with many beamed notes and rests. The El. Guit. part has a melodic line with eighth notes and rests. The Guit. part has a simple line with a few notes. The Synth. (bass) part has a simple line with a few notes. The D. Set part has a simple line with a few notes. The El. B. part has a simple line with a few notes. The Synth. (piano) part has a simple line with a few notes. The El. Guit. part has a simple line with a few notes.

22

Hnk. Pno.

D. Set

El. B.

Synth.

El. Guit.

Guit.

Synth.

D. Set

El. B.

Synth.

El. Guit.

The musical score for page 11, measure 22, is written for ten staves. The instruments are: Hnk. Pno., D. Set, El. B., Synth. (grand staff), El. Guit., Guit., Synth. (bass staff), D. Set, El. B., Synth. (grand staff), and El. Guit. The key signature has one flat (B-flat). The Hnk. Pno. staff has a treble clef and a bass clef. The D. Set staff has a double bar line. The El. B. staff has a bass clef. The Synth. grand staff has a treble and bass clef. The El. Guit. staff has a treble clef and an 8va marking. The Guit. staff has a treble clef and an 8va marking. The Synth. bass staff has a bass clef. The D. Set staff has a double bar line. The El. B. staff has a bass clef. The Synth. grand staff has a treble and bass clef. The El. Guit. staff has a treble clef and an 8va marking. The notation includes various musical symbols such as notes, rests, and accidentals.

23

Hnk. Pno.

D. Set

El. B.

Synth.

El. Guit.

Guit.

Synth.

D. Set

El. B.

Synth.

El. Guit.

8

8

8

8

8

8

8

8

8

8

8

8

24

Hnk. Pno.

D. Set

El. B.

Synth.

El. Guit.

Guit.

Synth.

D. Set

El. B.

Synth.

El. Guit.

8

8

8

8

8

8

8

8

8

8

25

Hnk. Pno.

D. Set

El. B.

Synth.

El. Guit.

Guit.

Synth.

D. Set

El. B.

Synth.

El. Guit.

8

8

8

8

8

8

8

8

8

8

27

Hnk. Pno.

D. Set

El. B.

Synth.

El. Guit.

Guit.

Synth.

D. Set

El. B.

Synth.

El. Guit.

The musical score for page 15, starting at measure 27, is arranged in ten staves. The first four staves (Hnk. Pno., D. Set, El. B., and Synth.) contain active musical notation. The Hnk. Pno. staff begins with a treble clef and a key signature of one flat, followed by a bass clef. The D. Set staff uses a percussion clef. The El. B. staff uses a bass clef. The Synth. section consists of two staves, both using treble clefs. The remaining six staves (El. Guit., Guit., Synth., D. Set, El. B., Synth., and El. Guit.) are mostly empty, with some staves containing rests or dynamic markings. The notation includes various musical symbols such as notes, rests, and dynamic markings.

29

Hnk. Pno.

D. Set

El. B.

Synth.

El. Guit.

Guit.

Synth.

D. Set

El. B.

Synth.

El. Guit.

31

Hnk. Pno.

D. Set

El. B.

Synth.

El. Guit.

Guit.

Synth.

D. Set

El. B.

Synth.

El. Guit.

Detailed description of the musical score: The score is for a multi-instrument ensemble. The first four staves are active in measures 31-33. The Hnk. Pno. staff uses a grand staff (treble and bass clefs). The D. Set staff uses a single staff with a double bar line and 'x' marks for hits. The El. B. staff uses a bass clef. The first Synth. staff uses a grand staff. The El. Guit. staff uses a single staff with a 'g' symbol. The remaining six staves (the second Synth. staff, El. Guit., Guit., the second D. Set, the second El. B., and the second El. Guit.) are inactive, showing rests. The key signature is one flat (B-flat) and the time signature is 4/4.

34

Hnk. Pno.

D. Set

El. B.

Synth.

El. Guit.

Guit.

Synth.

D. Set

El. B.

Synth.

El. Guit.

35

Hnk. Pno.

D. Set

El. B.

Synth.

El. Guit.

Guit.

Synth.

D. Set

El. B.

Synth.

El. Guit.

The musical score for page 19, starting at measure 35, is arranged for a ten-piece ensemble. The instruments and their staves are as follows:

- Hnk. Pno.**: Treble clef, one flat key signature. Measures 35-38 contain eighth and quarter notes.
- D. Set**: Percussion clef. Measures 35-38 contain eighth and quarter notes with 'x' marks indicating specific drum sounds.
- El. B.**: Bass clef. Measures 35-38 contain eighth and quarter notes.
- Synth.**: Two staves, treble and bass clefs. Measures 35-38 contain chords and single notes.
- El. Guit.**: Treble clef, one flat key signature. Measures 35-38 contain eighth and quarter notes, with a triplet of eighth notes in measure 36.
- Guit.**: Treble clef, one flat key signature. Measures 35-38 contain rests.
- Synth.**: Bass clef. Measures 35-38 contain rests.
- D. Set**: Percussion clef. Measures 35-38 contain rests.
- El. B.**: Bass clef. Measures 35-38 contain rests.
- Synth.**: Two staves, treble and bass clefs. Measures 35-38 contain rests.
- El. Guit.**: Treble clef, one flat key signature. Measures 35-38 contain rests.

36

Hnk. Pno.

D. Set

El. B.

Synth.

El. Guit.

Guit.

Synth.

D. Set

El. B.

Synth.

El. Guit.

37

Hnk. Pno.

D. Set

El. B.

Synth.

El. Guit.

Guit.

Synth.

D. Set

El. B.

Synth.

El. Guit.

Detailed description of the musical score: The score is for a multi-instrumental piece. It begins at measure 37. The Hnk. Pno. part plays a melody of quarter notes: G4, A4, Bb4, C5, D5, E5, F5, G5. The D. Set part plays a pattern of eighth notes: G4, A4, Bb4, C5, D5, E5, F5, G5. The El. B. part plays a melody of quarter notes: G3, A3, Bb3, C4, D4, E4, F4, G4. The Synth. part (grand staff) plays a pattern of eighth notes: G4, A4, Bb4, C5, D5, E5, F5, G5. The El. Guit. part plays a pattern of eighth notes: G4, A4, Bb4, C5, D5, E5, F5, G5, and a triplet of eighth notes: G4, A4, Bb4. The Guit. part has a single eighth note: G4. The Synth. part has a single eighth note: G4. The D. Set part has a single eighth note: G4. The El. B. part has a single eighth note: G4. The Synth. grand staff has a single eighth note: G4. The El. Guit. part has a single eighth note: G4.

38

Hnk. Pno.

D. Set

El. B.

Synth.

El. Guit.

Guit.

Synth.

D. Set

El. B.

Synth.

El. Guit.

The musical score for page 22, starting at measure 38, is arranged for ten staves. The instruments are: Hnk. Pno., D. Set, El. B., Synth. (grand staff), El. Guit., Guit., Synth. (bass staff), D. Set, El. B., Synth. (grand staff), and El. Guit. The key signature has one flat (B-flat). The Hnk. Pno. staff has a treble clef and a bass clef. The D. Set staff has a double bar line. The El. B. staff has a bass clef. The Synth. grand staff has a treble and bass clef. The El. Guit. staff has a treble clef and an 8va marking. The Guit. staff has a treble clef and an 8va marking. The Synth. bass staff has a bass clef. The D. Set staff has a double bar line. The El. B. staff has a bass clef. The Synth. grand staff has a treble and bass clef. The El. Guit. staff has a treble clef and an 8va marking. The score includes various musical notations such as notes, rests, and a triplet in the El. Guit. staff.

39

Hnk. Pno.

D. Set

El. B.

Synth.

El. Guit.

Guit.

Synth.

D. Set

El. B.

Synth.

El. Guit.

40

Hnk. Pno.

D. Set

El. B.

Synth.

El. Guit.

Guit.

Synth.

D. Set

El. B.

Synth.

El. Guit.

Detailed description of the musical score: The score is for a multi-instrument ensemble. It begins at measure 40. The Hnk. Pno. part features a melodic line with eighth and sixteenth notes. The D. Set part has a rhythmic pattern with eighth notes and rests. The El. B. part plays a simple bass line. The first Synth. staff (treble and bass clef) plays chords and single notes. The El. Guit. part has a complex, fast-moving line with triplets and sixteenth notes. The Guit. part has a whole rest. The second Synth. staff has a whole rest. The second D. Set part has a whole rest. The El. B. part has a whole rest. The third Synth. staff has a whole rest. The third El. Guit. part has a whole rest.

41

Hnk. Pno.

D. Set

El. B.

Synth.

El. Guit.

Guit.

Synth.

D. Set

El. B.

Synth.

El. Guit.

8

8

8

8

8

8

8

8

8

8

8

8

43

Hnk. Pno.

D. Set

El. B.

Synth.

El. Guit.

Guit.

Synth.

D. Set

El. B.

Synth.

El. Guit.

45

Hnk. Pno.

D. Set

El. B.

Synth.

El. Guit.

Guit.

Synth.

D. Set

El. B.

Synth.

El. Guit.

47

Hnk. Pno.

D. Set

El. B.

Synth.

El. Guit.

Guit.

Synth.

D. Set

El. B.

Synth.

El. Guit.

49

Hnk. Pno.

D. Set

El. B.

Synth.

El. Guit.

Guit.

Synth.

D. Set

El. B.

Synth.

El. Guit.

The musical score for page 49 is written for a multi-instrument ensemble. The instruments are: Hnk. Pno. (Horn and Piano), D. Set (Drum Set), El. B. (Electric Bass), Synth. (Synthesizer), El. Guit. (Electric Guitar), and Guit. (Guitar). The score is in 3/4 time and B-flat major. The Hnk. Pno. part features a melodic line with a triplet. The D. Set part has a rhythmic pattern. The El. B. part has a bass line. The Synth. part has a complex texture with a triplet. The El. Guit. part has a sustained note. The Guit. part has a melodic line. The Synth. part has a complex texture. The D. Set part has a rhythmic pattern. The El. B. part has a bass line. The Synth. part has a complex texture. The El. Guit. part has a sustained note.

52

Hnk. Pno.

D. Set

El. B.

Synth.

El. Guit.

Guit.

Synth.

D. Set

El. B.

Synth.

El. Guit.

8

8

8

8

8

8

8

8

8

8

8

8

54

Hnk. Pno.

D. Set

El. B.

Synth.

El. Guit.

Guit.

Synth.

D. Set

El. B.

Synth.

El. Guit.

55

56

Hnk. Pno.

D. Set

El. B.

Synth.

El. Guit.

Guit.

Synth.

D. Set

El. B.

Synth.

El. Guit.

The musical score for page 32, starting at measure 56, is arranged in a multi-staff format. The instruments and their staves are as follows:

- Hnk. Pno.**: Treble clef, one flat key signature. It begins with a rest, followed by a series of eighth notes, and ends with a quarter note.
- D. Set**: Percussion clef. It features a series of eighth notes, followed by a quarter note, and ends with a quarter note.
- El. B.**: Bass clef. It features a quarter note, followed by a quarter note, and ends with a quarter note.
- Synth.**: Bass clef. It features a quarter note, followed by a quarter note, and ends with a quarter note.
- El. Guit.**: Treble clef. It features a quarter note, followed by a quarter note, and ends with a quarter note.
- Guit.**: Treble clef. It features a quarter note, followed by a quarter note, and ends with a quarter note.
- Synth.**: Bass clef. It features a quarter note, followed by a quarter note, and ends with a quarter note.
- D. Set**: Percussion clef. It features a quarter note, followed by a quarter note, and ends with a quarter note.
- El. B.**: Bass clef. It features a quarter note, followed by a quarter note, and ends with a quarter note.
- Synth.**: Treble clef. It features a quarter note, followed by a quarter note, and ends with a quarter note.
- El. Guit.**: Treble clef. It features a quarter note, followed by a quarter note, and ends with a quarter note.

The score includes various musical notations such as notes, rests, and dynamic markings. The key signature is one flat (B-flat). The Hnk. Pno. staff has a treble clef and a key signature of one flat. The D. Set staff has a percussion clef. The El. B. staff has a bass clef. The Synth. staff has a bass clef. The El. Guit. staff has a treble clef. The Guit. staff has a treble clef. The Synth. staff has a bass clef. The D. Set staff has a percussion clef. The El. B. staff has a bass clef. The Synth. staff has a treble clef. The El. Guit. staff has a treble clef.

57

Hnk. Pno.

D. Set

El. B.

Synth.

El. Guit.

Guit.

Synth.

D. Set

El. B.

Synth.

El. Guit.

58

Hnk. Pno.

D. Set

El. B.

Synth.

El. Guit.

Guit.

Synth.

D. Set

El. B.

Synth.

El. Guit.

59

Hnk. Pno.

D. Set

El. B.

Synth.

El. Guit.

Guit.

Synth.

D. Set

El. B.

Synth.

El. Guit.

The musical score for page 35, starting at measure 59, is arranged for a ten-piece ensemble. The instruments and their staves are: Hnk. Pno. (Horn and Piano), D. Set (Drum Set), El. B. (Electric Bass), Synth. (Synthesizer, two staves), El. Guit. (Electric Guitar), Guit. (Guitar), Synth. (Synthesizer, two staves), D. Set (Drum Set), El. B. (Electric Bass), Synth. (Synthesizer, two staves), and El. Guit. (Electric Guitar). The key signature is one flat (Bb). The Hnk. Pno. staff has a treble clef and a key signature of one flat. The D. Set staff has a double bar line. The El. B. staff has a bass clef and a key signature of one flat. The Synth. staves have treble clefs and a key signature of one flat. The El. Guit. staff has a treble clef and a key signature of one flat. The Guit. staff has a treble clef and a key signature of one flat. The Synth. staff has a treble clef and a key signature of one flat. The D. Set staff has a double bar line. The El. B. staff has a bass clef and a key signature of one flat. The Synth. staves have treble clefs and a key signature of one flat. The El. Guit. staff has a treble clef and a key signature of one flat. The score includes various musical notations such as notes, rests, and dynamic markings.

60

Hnk. Pno.

D. Set

El. B.

Synth.

El. Guit.

Guit.

Synth.

D. Set

El. B.

Synth.

El. Guit.

61

Hnk. Pno.

D. Set

El. B.

Synth.

El. Guit.

Guit.

Synth.

D. Set

El. B.

Synth.

El. Guit.

62

Hnk. Pno.

D. Set

El. B.

Synth.

El. Guit.

Guit.

Synth.

D. Set

El. B.

Synth.

El. Guit.

63

Hnk. Pno.

D. Set

El. B.

Synth.

El. Guit.

Guit.

Synth.

D. Set

El. B.

Synth.

El. Guit.

8

64

Hnk. Pno.

D. Set

El. B.

Synth.

El. Guit.

Guit.

Synth.

D. Set

El. B.

Synth.

El. Guit.

65

Hnk. Pno.

D. Set

El. B.

Synth.

El. Guit.

Guit.

Synth.

D. Set

El. B.

Synth.

El. Guit.

66

67

68

66

Hnk. Pno.

D. Set

El. B.

Synth.

El. Guit.

Guit.

Synth.

D. Set

El. B.

Synth.

El. Guit.

67

Hnk. Pno.

D. Set

El. B.

Synth.

El. Guit.

Guit.

Synth.

D. Set

El. B.

Synth.

El. Guit.

68

Hnk. Pno.

D. Set

El. B.

Synth.

El. Guit.

Guit.

Synth.

D. Set

El. B.

Synth.

El. Guit.

69

70

71

The musical score for measures 68-71 is as follows:

- Measure 68:**
 - Hnk. Pno.:** Treble clef, key signature of one flat. Notes: quarter note (F4), quarter note (A4), quarter note (C5), quarter note (E5).
 - D. Set:** Two staves, both containing a whole rest.
 - El. B.:** Bass clef, key signature of one flat. Notes: quarter note (F3), quarter note (A3), quarter note (C4), quarter note (E4).
 - Synth.:** Two staves, both containing a whole rest.
 - El. Guit.:** Treble clef, key signature of one flat. Notes: quarter note (F4), quarter note (A4), quarter note (C5), quarter note (E5).
 - Guit.:** Treble clef, key signature of one flat. Notes: quarter note (F4), quarter note (A4), quarter note (C5), quarter note (E5).
 - Synth.:** Treble clef, key signature of one flat. Notes: quarter note (F4), quarter note (A4), quarter note (C5), quarter note (E5).
- Measure 69:**
 - Hnk. Pno.:** Treble clef, key signature of one flat. Notes: quarter note (F4), quarter note (A4), quarter note (C5), quarter note (E5).
 - D. Set:** Two staves, both containing a whole rest.
 - El. B.:** Bass clef, key signature of one flat. Notes: quarter note (F3), quarter note (A3), quarter note (C4), quarter note (E4).
 - Synth.:** Two staves, both containing a whole rest.
 - El. Guit.:** Treble clef, key signature of one flat. Notes: quarter note (F4), quarter note (A4), quarter note (C5), quarter note (E5).
 - Guit.:** Treble clef, key signature of one flat. Notes: quarter note (F4), quarter note (A4), quarter note (C5), quarter note (E5).
 - Synth.:** Treble clef, key signature of one flat. Notes: quarter note (F4), quarter note (A4), quarter note (C5), quarter note (E5).
- Measure 70:**
 - Hnk. Pno.:** Treble clef, key signature of one flat. Notes: quarter note (F4), quarter note (A4), quarter note (C5), quarter note (E5).
 - D. Set:** Two staves, both containing a whole rest.
 - El. B.:** Bass clef, key signature of one flat. Notes: quarter note (F3), quarter note (A3), quarter note (C4), quarter note (E4).
 - Synth.:** Two staves, both containing a whole rest.
 - El. Guit.:** Treble clef, key signature of one flat. Notes: quarter note (F4), quarter note (A4), quarter note (C5), quarter note (E5).
 - Guit.:** Treble clef, key signature of one flat. Notes: quarter note (F4), quarter note (A4), quarter note (C5), quarter note (E5).
 - Synth.:** Treble clef, key signature of one flat. Notes: quarter note (F4), quarter note (A4), quarter note (C5), quarter note (E5).
- Measure 71:**
 - Hnk. Pno.:** Treble clef, key signature of one flat. Notes: quarter note (F4), quarter note (A4), quarter note (C5), quarter note (E5).
 - D. Set:** Two staves, both containing a whole rest.
 - El. B.:** Bass clef, key signature of one flat. Notes: quarter note (F3), quarter note (A3), quarter note (C4), quarter note (E4).
 - Synth.:** Two staves, both containing a whole rest.
 - El. Guit.:** Treble clef, key signature of one flat. Notes: quarter note (F4), quarter note (A4), quarter note (C5), quarter note (E5).
 - Guit.:** Treble clef, key signature of one flat. Notes: quarter note (F4), quarter note (A4), quarter note (C5), quarter note (E5).
 - Synth.:** Treble clef, key signature of one flat. Notes: quarter note (F4), quarter note (A4), quarter note (C5), quarter note (E5).

Pdf downloaded from www.midicities.com

70

Hnk. Pno.

D. Set

El. B.

Synth.

El. Guit.

Guit.

Synth.

D. Set

El. B.

Synth.

El. Guit.

71

[illegible]

72

Hnk. Pno.

D. Set

El. B.

Synth.

El. Guit.

Guit.

Synth.

D. Set

El. B.

Synth.

El. Guit.

72

73

74

75

73

73

Hnk. Pno.

D. Set

El. B.

Synth.

El. Guit.

Guit.

Synth.

D. Set

El. B.

Synth.

El. Guit.

74

Hnk. Pno.

D. Set

El. B.

Synth.

El. Guit.

Guit.

Synth.

D. Set

El. B.

Synth.

El. Guit.

Detailed description of the musical score: The score is for a multi-instrument ensemble. The instruments are: Hnk. Pno. (Horn and Piano), D. Set (Drum Set), El. B. (Electric Bass), Synth. (Synthesizer), El. Guit. (Electric Guitar), and Guit. (Acoustic Guitar). The key signature is one flat (B-flat). The score consists of four measures, numbered 74 to 77. In measure 74, the Hnk. Pno. and El. B. are active. In measure 75, the D. Set and Synth. are active. In measure 76, the D. Set and Synth. are active. In measure 77, the D. Set and Synth. are active.

75

Hnk. Pno.

D. Set

El. B.

Synth.

El. Guit.

Guit.

Synth.

D. Set

El. B.

Synth.

El. Guit.

76

Hnk. Pno.

D. Set

El. B.

Synth.

El. Guit.

Guit.

Synth.

D. Set

El. B.

Synth.

El. Guit.

77

77

Hnk. Pno.

D. Set

El. B.

Synth.

El. Guit.

Guit.

Synth.

D. Set

El. B.

Synth.

El. Guit.

78

79

80

The musical score for measures 77-80 is presented in a system of ten staves. The instruments are: Hnk. Pno. (Horn & Piano), D. Set (Drum Set), El. B. (Electric Bass), Synth. (Synthesizer), El. Guit. (Electric Guitar), and Guit. (Acoustic Guitar). The key signature is one flat (B-flat). Measure 77 shows the Hnk. Pno. playing a melodic line, while the D. Set, El. B., Synth., and Guit. parts are mostly silent. Measure 78 features a complex rhythmic pattern in the D. Set and El. B. parts, with the Synth. and Guit. parts also contributing. Measure 79 continues the complex rhythmic pattern, with the Synth. and Guit. parts playing a melodic line. Measure 80 shows the Hnk. Pno. playing a melodic line, while the D. Set, El. B., Synth., and Guit. parts are mostly silent.

78

Hnk. Pno.

D. Set

El. B.

Synth.

El. Guit.

Guit.

Synth.

D. Set

El. B.

Synth.

El. Guit.

79

80

81

The musical score for measures 78-81 is presented in a multi-staff format. Measure 78 features a Hnk. Pno. part with a melodic line in the treble and bass staves, while the D. Set, El. B., Synth., and Guit. parts are silent. Measure 79 introduces a D. Set part with a complex rhythmic pattern, an El. B. part with a melodic line, and a Synth. part with a sustained chord. Measure 80 continues the D. Set and El. B. parts, with the Synth. part remaining silent. Measure 81 concludes the sequence with a final D. Set and El. B. part, and a Synth. part with a sustained chord. The score is written in a key signature of one flat and a 4/4 time signature.

79

Hnk. Pno.

D. Set

El. B.

Synth.

El. Guit.

Guit.

Synth.

D. Set

El. B.

Synth.

El. Guit.

80

Hnk. Pno.

D. Set

El. B.

Synth.

El. Guit.

Guit.

Synth.

D. Set

El. B.

Synth.

El. Guit.

81

Hnk. Pno.

D. Set

El. B.

Synth.

El. Guit.

Guit.

Synth.

D. Set

El. B.

Synth.

El. Guit.

82

83

84