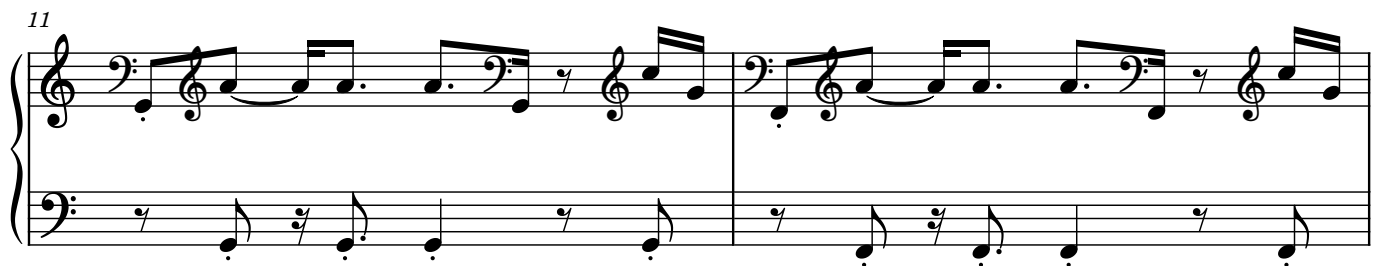
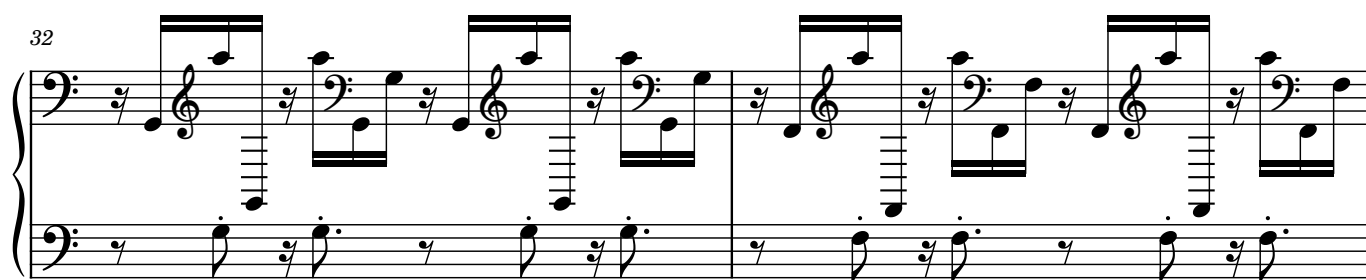
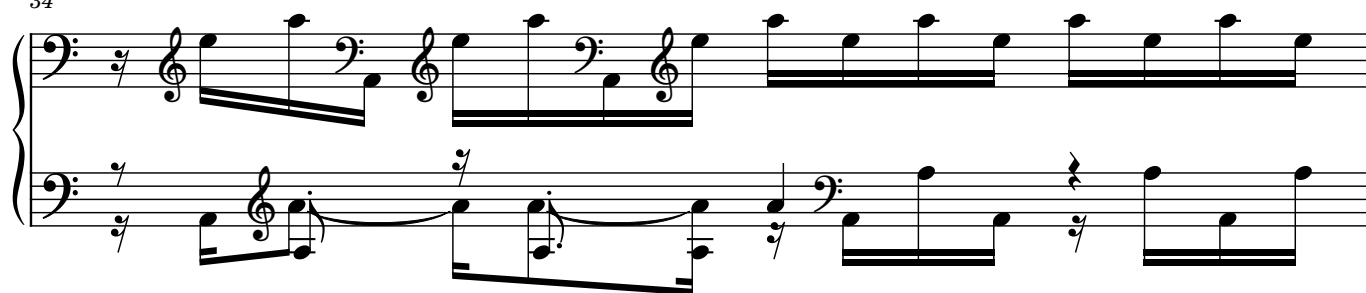


♩ = 140

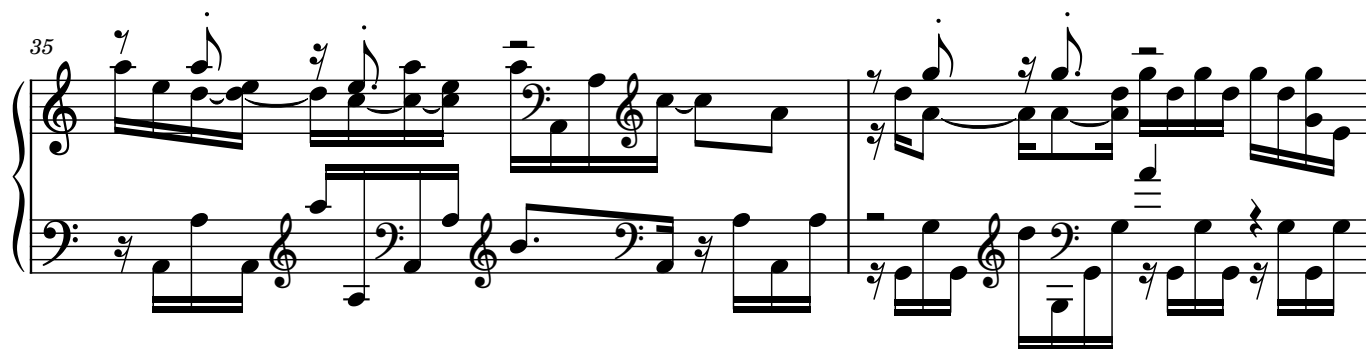




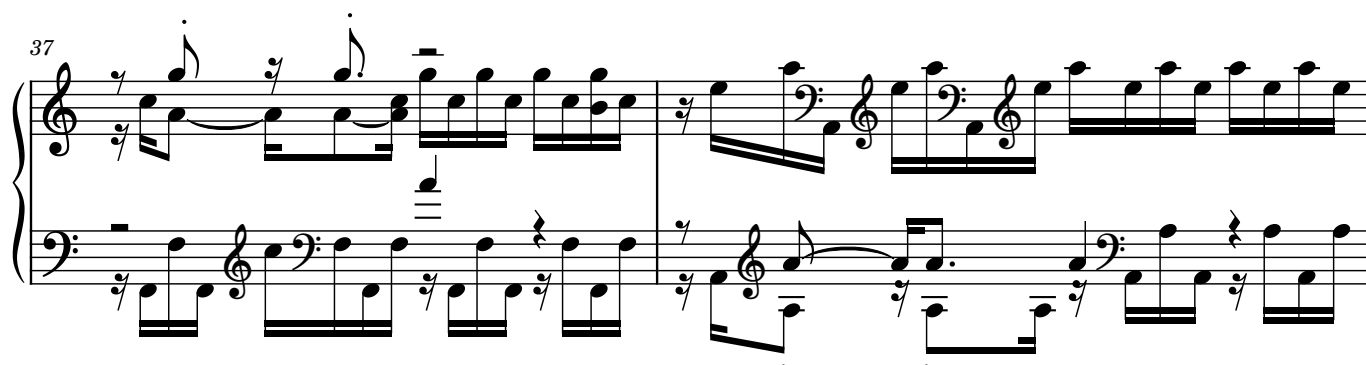
34



35



37



39



41



This image displays a musical score for piano, consisting of four systems of music, numbered 42 through 45. Each system is written for two staves, a treble and a bass clef, joined by a brace on the left. The notation includes various musical symbols such as notes, rests, and dynamic markings. The first system (measure 42) features a treble staff with a series of eighth notes and a bass staff with a similar rhythmic pattern. The second system (measure 43) continues the melodic and harmonic development. The third system (measure 44) shows a more complex arrangement with multiple beamed notes. The fourth system (measure 45) concludes the sequence with a final chord and a sustained note in the bass. The overall style is that of a classical piano composition, with clear articulation and a steady tempo indicated by the note values.

46

Measures 46-47 of a piano piece. Measure 46 features a treble staff with a dotted quarter note G5 and a bass staff with a dotted quarter note F4. Measure 47 continues with a treble staff of eighth notes (G5, A5, B5, C6, B5, A5, G5) and a bass staff of eighth notes (F4, E4, D4, C4, B3, A3, G3). Both staves have a common time signature of 3/4.

47

Measures 48-49 of a piano piece. Measure 48 features a treble staff of eighth notes (G5, A5, B5, C6, B5, A5, G5) and a bass staff of eighth notes (F4, E4, D4, C4, B3, A3, G3). Measure 49 continues with a treble staff of eighth notes (G5, A5, B5, C6, B5, A5, G5) and a bass staff of eighth notes (F4, E4, D4, C4, B3, A3, G3). Both staves have a common time signature of 3/4.

49

Measures 50-52 of a piano piece. Measure 50 features a treble staff of eighth notes (G5, A5, B5, C6, B5, A5, G5) and a bass staff of eighth notes (F4, E4, D4, C4, B3, A3, G3). Measure 51 features a treble staff of eighth notes (G5, A5, B5, C6, B5, A5, G5) and a bass staff of eighth notes (F4, E4, D4, C4, B3, A3, G3). Measure 52 features a treble staff of eighth notes (G5, A5, B5, C6, B5, A5, G5) and a bass staff of eighth notes (F4, E4, D4, C4, B3, A3, G3). Both staves have a common time signature of 3/4.

53

Measures 53-57 of a piano piece. Measure 53 features a treble staff of eighth notes (G5, A5, B5, C6, B5, A5, G5) and a bass staff of eighth notes (F4, E4, D4, C4, B3, A3, G3). Measure 54 features a treble staff of eighth notes (G5, A5, B5, C6, B5, A5, G5) and a bass staff of eighth notes (F4, E4, D4, C4, B3, A3, G3). Measure 55 features a treble staff of eighth notes (G5, A5, B5, C6, B5, A5, G5) and a bass staff of eighth notes (F4, E4, D4, C4, B3, A3, G3). Measure 56 features a treble staff of eighth notes (G5, A5, B5, C6, B5, A5, G5) and a bass staff of eighth notes (F4, E4, D4, C4, B3, A3, G3). Measure 57 features a treble staff of eighth notes (G5, A5, B5, C6, B5, A5, G5) and a bass staff of eighth notes (F4, E4, D4, C4, B3, A3, G3). Both staves have a common time signature of 3/4.