

♩ = 138

Bass Synthesizer, Main Melody



Saw Synthesizer, Bassline



2

Synth.



Synth.



4

Synth.



Synth.



6

Synth.



Synth.

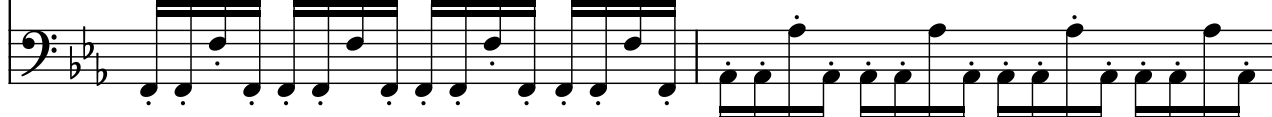


8

Synth.



Synth.



10

Synth.



Synth.



12

Synth.

Musical notation for measures 12-13, Treble staff. The staff contains chords and single notes with stems. Measure 12 starts with a whole rest, followed by a half note chord (F4, A4), a quarter rest, a half note chord (F4, A4), a quarter rest, a half note chord (F4, A4), a quarter rest, a half note chord (F4, A4), and a quarter rest. Measure 13 starts with a half note chord (F4, A4), a quarter rest, a half note chord (F4, A4), a quarter rest, a half note chord (F4, A4), a quarter rest, a half note chord (F4, A4), and a quarter rest.

Synth.

Musical notation for measures 12-13, Bass staff. The staff contains a continuous eighth-note pattern. Measure 12 starts with a whole rest, followed by a half note chord (F4, A4), a quarter rest, a half note chord (F4, A4), a quarter rest, a half note chord (F4, A4), a quarter rest, a half note chord (F4, A4), and a quarter rest. Measure 13 starts with a half note chord (F4, A4), a quarter rest, a half note chord (F4, A4), a quarter rest, a half note chord (F4, A4), a quarter rest, a half note chord (F4, A4), and a quarter rest.

14

Synth.

Musical notation for measures 14-15, Treble staff. The staff contains chords and single notes with stems. Measure 14 starts with a whole rest, followed by a half note chord (F4, A4), a quarter rest, a half note chord (F4, A4), a quarter rest, a half note chord (F4, A4), a quarter rest, a half note chord (F4, A4), and a quarter rest. Measure 15 starts with a half note chord (F4, A4), a quarter rest, a half note chord (F4, A4), a quarter rest, a half note chord (F4, A4), a quarter rest, a half note chord (F4, A4), and a quarter rest.

Synth.

Musical notation for measures 14-15, Bass staff. The staff contains a continuous eighth-note pattern. Measure 14 starts with a whole rest, followed by a half note chord (F4, A4), a quarter rest, a half note chord (F4, A4), a quarter rest, a half note chord (F4, A4), a quarter rest, a half note chord (F4, A4), and a quarter rest. Measure 15 starts with a half note chord (F4, A4), a quarter rest, a half note chord (F4, A4), a quarter rest, a half note chord (F4, A4), a quarter rest, a half note chord (F4, A4), and a quarter rest.

16

Synth.

Musical notation for measures 16-17, Treble staff. The staff contains chords and single notes with stems. Measure 16 starts with a whole rest, followed by a half note chord (F4, A4), a quarter rest, a half note chord (F4, A4), a quarter rest, a half note chord (F4, A4), a quarter rest, a half note chord (F4, A4), and a quarter rest. Measure 17 starts with a half note chord (F4, A4), a quarter rest, a half note chord (F4, A4), a quarter rest, a half note chord (F4, A4), a quarter rest, a half note chord (F4, A4), and a quarter rest.

Synth.

Musical notation for measures 16-17, Bass staff. The staff contains a continuous eighth-note pattern. Measure 16 starts with a whole rest, followed by a half note chord (F4, A4), a quarter rest, a half note chord (F4, A4), a quarter rest, a half note chord (F4, A4), a quarter rest, a half note chord (F4, A4), and a quarter rest. Measure 17 starts with a half note chord (F4, A4), a quarter rest, a half note chord (F4, A4), a quarter rest, a half note chord (F4, A4), a quarter rest, a half note chord (F4, A4), and a quarter rest.