

♩ = 173

Measures 1-3 of the piece. The key signature has one flat (B-flat). The time signature is 3/4. The music is written for piano in grand staff notation. Measure 1 features a continuous eighth-note pattern in the right hand and a bass line. Measure 2 continues the eighth-note pattern. Measure 3 features a triplet of eighth notes in the right hand and a bass line.

4

Measures 4-6. Measure 4 has a triplet of eighth notes in the right hand. Measure 5 has a triplet of eighth notes in the right hand. Measure 6 has a triplet of eighth notes in the right hand.

7

Measures 7-9. Measure 7 has a triplet of eighth notes in the right hand. Measure 8 has a triplet of eighth notes in the right hand. Measure 9 has a triplet of eighth notes in the right hand.

10

Measures 10-12. Measure 10 has a triplet of eighth notes in the right hand. Measure 11 has a triplet of eighth notes in the right hand. Measure 12 has a triplet of eighth notes in the right hand.

13

Measures 13-15. Measure 13 has a triplet of eighth notes in the right hand. Measure 14 has a triplet of eighth notes in the right hand. Measure 15 has a triplet of eighth notes in the right hand.

16

Measures 16-18. Measure 16 has a triplet of eighth notes in the right hand. Measure 17 has a triplet of eighth notes in the right hand. Measure 18 has a triplet of eighth notes in the right hand.

System 1, measures 19-20. The music is in G minor (one flat). The right hand features a melodic line with eighth and sixteenth notes, while the left hand provides a harmonic accompaniment with chords and single notes. Measure 19 ends with a repeat sign.

21

System 2, measures 21-23. The right hand continues the melodic development with slurs and ties. The left hand features a more active bass line with eighth notes and chords. Measure 23 ends with a repeat sign.

24

System 3, measures 24-27. This system shows a continuation of the melodic and harmonic themes. The right hand has a series of eighth notes, and the left hand has a steady accompaniment. Measure 27 ends with a repeat sign.

28

System 4, measures 28-30. The right hand features a triplet of eighth notes in measure 30. The left hand has a more complex accompaniment with slurs and ties. Measure 30 ends with a repeat sign.

31

System 5, measures 31-32. The right hand has a melodic line with slurs, and the left hand has a steady accompaniment. Measure 32 ends with a repeat sign.

33

System 6, measures 33-34. The right hand features a melodic line with slurs, and the left hand has a steady accompaniment. Measure 34 ends with a repeat sign.

35

Measures 35 and 36 of a musical score. The piece is in 3/4 time and B-flat major. The right hand features a melodic line with eighth and sixteenth notes, while the left hand provides a steady accompaniment of eighth notes. Measure 36 includes a repeat sign and a trill in the right hand.

37

Measures 37 and 38. The right hand continues the melodic development with various articulations, including slurs and accents. The left hand maintains the eighth-note accompaniment. Measure 38 ends with a repeat sign and a trill in the right hand.

39

Measures 39 and 40. Measure 39 features a trill in the right hand. Measure 40 shows a continuation of the melodic line in the right hand and the accompaniment in the left hand.

40

Measures 40 and 41. Measure 40 includes a trill in the right hand. Measure 41 features a triplet in the right hand, indicated by a '3' and a bracket.

41

Measures 41 and 42. Measure 41 includes a triplet in the right hand. Measure 42 continues the melodic and accompanimental lines, ending with a repeat sign and a trill in the right hand.

43

Measures 43 and 44 of a musical score. The piece is in B-flat major (two flats) and 4/4 time. The right hand features a continuous eighth-note melody with various accidentals, including a sharp on the final note of measure 44. The left hand provides a harmonic accompaniment with chords and single notes, including a triplet of eighth notes in measure 44.

45

Measures 45 and 46. Measure 45 continues the eighth-note melody in the right hand. Measure 46 features a triplet of eighth notes in the right hand, marked with a '3' and a slur. The left hand continues its accompaniment with chords and single notes.

47

Measures 47, 48, and 49. Measure 47 shows a change in the left hand's accompaniment. Measure 48 features a triplet of eighth notes in the right hand, marked with a '3' and a slur. Measure 49 continues the eighth-note melody in the right hand.

50

Measures 50, 51, and 52. Measure 50 features a triplet of eighth notes in the right hand, marked with a '3' and a slur. Measure 51 continues the eighth-note melody in the right hand. Measure 52 features a triplet of eighth notes in the right hand, marked with a '3' and a slur.

53

Measures 53, 54, 55, 56, and 57. Measure 53 features a triplet of eighth notes in the right hand, marked with a '3' and a slur. Measure 54 continues the eighth-note melody in the right hand. Measure 55 features a triplet of eighth notes in the right hand, marked with a '3' and a slur. Measure 56 continues the eighth-note melody in the right hand. Measure 57 features a triplet of eighth notes in the right hand, marked with a '3' and a slur.

58

System 1, measures 58-61. The music is in 2/4 time with a key signature of one flat (B-flat). The right hand features a melodic line with eighth and sixteenth notes, while the left hand provides a harmonic accompaniment with chords and single notes.

62

System 2, measures 62-63. The right hand continues the melodic development with more complex rhythmic patterns, including triplets and sixteenth notes. The left hand maintains a steady accompaniment.

64

System 3, measures 64-66. The right hand has a more active role with frequent sixteenth-note passages. The left hand uses a combination of chords and moving lines to support the melody.

67

System 4, measures 67-69. The right hand features a series of ascending and descending sixteenth-note runs. The left hand provides a consistent harmonic foundation.

70

System 5, measures 70-72. The right hand continues with intricate sixteenth-note patterns. The left hand uses chords and single notes to complement the right hand's melody.

73

System 6, measures 73-76. The right hand concludes the piece with a final melodic flourish. The left hand provides a concluding accompaniment with chords and single notes.

System 1, measures 75-77. The piece is in B-flat major (two flats). The right hand features a melodic line with eighth and sixteenth notes, including a triplet in measure 76. The left hand provides a steady accompaniment with eighth notes and chords.

System 2, measures 78-81. The right hand continues the melodic development with various rhythmic patterns. The left hand maintains the accompaniment, with some measures featuring a more active bass line.

System 3, measures 82-84. The right hand has a more active role with sixteenth-note passages. The left hand continues with a consistent accompaniment pattern.

System 4, measures 85-86. The right hand features a long, flowing melodic line with many beamed notes. The left hand provides a rhythmic foundation with eighth-note chords.

System 5, measures 87-88. The right hand continues the melodic line, while the left hand has a more complex accompaniment with many beamed eighth notes.

System 6, measures 89-90. The right hand has a melodic line with some rests. The left hand features a very active accompaniment with many beamed eighth notes and a final flourish in measure 90.

91

Measures 91 and 92 of a musical score. The piece is in B-flat major (two flats) and 4/4 time. Measure 91 features a piano introduction with a treble staff playing a series of eighth-note chords and a bass staff with a single eighth note. Measure 92 continues with a more complex piano accompaniment, including sixteenth-note runs in the treble and a bass line with eighth notes and a half note.

93

Measures 93 and 94. Measure 93 shows a continuation of the piano accompaniment with a treble staff featuring a melodic line and a bass staff with a steady eighth-note pattern. Measure 94 introduces a vocal melody in the treble staff, starting with a half note, while the piano accompaniment continues in the bass staff.

95

Measures 95 and 96. Measure 95 features a piano introduction with a treble staff playing a series of eighth-note chords and a bass staff with a single eighth note. Measure 96 continues with a more complex piano accompaniment, including sixteenth-note runs in the treble and a bass line with eighth notes and a half note.

97

Measures 97 and 98. Measure 97 shows a continuation of the piano accompaniment with a treble staff featuring a melodic line and a bass staff with a steady eighth-note pattern. Measure 98 introduces a vocal melody in the treble staff, starting with a half note, while the piano accompaniment continues in the bass staff.

99

Measures 99 and 100. Measure 99 features a piano introduction with a treble staff playing a series of eighth-note chords and a bass staff with a single eighth note. Measure 100 continues with a more complex piano accompaniment, including sixteenth-note runs in the treble and a bass line with eighth notes and a half note.

101

Measures 101-103 of a musical score. The key signature has one flat (B-flat). The score is written for piano with a grand staff (treble and bass clefs). Measure 101 features a complex rhythmic pattern in the right hand with many beamed sixteenth notes and a bass line with eighth notes. Measure 102 continues the right-hand pattern with some rests and a bass line with quarter notes. Measure 103 shows a continuation of the right-hand pattern with a bass line featuring a half note and a quarter note.

104

Measures 104-107 of a musical score. The key signature has one flat. Measure 104 has a right hand with eighth notes and a bass line with quarter notes. Measure 105 continues the right-hand pattern with a bass line of quarter notes. Measure 106 features a right hand with eighth notes and a bass line with eighth notes. Measure 107 shows a right hand with eighth notes and a bass line with eighth notes, ending with a double bar line.

108

Measures 108-112 of a musical score. The key signature has one flat. Measure 108 has a right hand with eighth notes and a bass line with eighth notes. Measure 109 continues the right-hand pattern with a bass line of eighth notes. Measure 110 features a right hand with eighth notes and a bass line with eighth notes. Measure 111 shows a right hand with eighth notes and a bass line with eighth notes. Measure 112 has a right hand with eighth notes and a bass line with eighth notes, ending with a double bar line.

113

Measures 113-115 of a musical score. The key signature has one flat. Measure 113 has a right hand with eighth notes and a bass line with eighth notes. Measure 114 continues the right-hand pattern with a bass line of eighth notes. Measure 115 features a right hand with eighth notes and a bass line with eighth notes, ending with a double bar line.

116

Measures 116-118 of a musical score. The key signature has one flat. Measure 116 has a right hand with eighth notes and a bass line with eighth notes. Measure 117 continues the right-hand pattern with a bass line of eighth notes. Measure 118 features a right hand with eighth notes and a bass line with eighth notes, ending with a double bar line.



118

Measures 118-119. The piece is in B-flat major (two flats). The bass line is mostly whole rests. The treble line features a complex rhythmic pattern with eighth and sixteenth notes, including triplets and slurs.

120

Measures 120-121. The bass line has a melodic line in measure 120 and rests in measure 121. The treble line continues with complex rhythmic patterns, including a triplet in measure 121.

122

Measures 122-123. The bass line has a melodic line in measure 122 and rests in measure 123. The treble line features a triplet in measure 122 and a complex rhythmic pattern in measure 123.

124

Measures 124-125. The bass line has a melodic line in measure 124 and rests in measure 125. The treble line features a triplet in measure 124 and a complex rhythmic pattern in measure 125.

126

Measures 126-127. The bass line has a melodic line in measure 126 and rests in measure 127. The treble line features a triplet in measure 126 and a complex rhythmic pattern in measure 127.

System 1 (measures 128-131) features a piano accompaniment in the left hand and a single melodic line in the right hand. The key signature has one flat (B-flat). Measure 128 contains a triplet of eighth notes in the right hand. Measure 131 features a complex rhythmic pattern with sixteenth notes and a triplet in the right hand.

System 2 (measures 132-134) continues the piano accompaniment and the single melodic line. Measure 132 shows a melodic phrase in the right hand. Measure 134 features a melodic phrase in the right hand and a complex rhythmic pattern in the left hand.

System 3 (measures 135-136) continues the piano accompaniment and the single melodic line. Measure 135 features a melodic phrase in the right hand. Measure 136 features a melodic phrase in the right hand and a complex rhythmic pattern in the left hand.

System 4 (measures 137-138) continues the piano accompaniment and the single melodic line. Measure 137 features a melodic phrase in the right hand. Measure 138 features a melodic phrase in the right hand and a complex rhythmic pattern in the left hand.

System 5 (measures 139-141) continues the piano accompaniment and the single melodic line. Measure 139 features a melodic phrase in the right hand. Measure 141 features a melodic phrase in the right hand and a complex rhythmic pattern in the left hand.

System 6 (measures 142-143) continues the piano accompaniment and the single melodic line. Measure 142 features a melodic phrase in the right hand. Measure 143 features a melodic phrase in the right hand and a complex rhythmic pattern in the left hand, including a triplet in the right hand.

144

Measures 144-145 of a musical score. The piece is in B-flat major (two flats) and 3/4 time. Measure 144 features a treble staff with eighth-note runs and a bass staff with a steady eighth-note accompaniment. Measure 145 continues the treble staff's melodic line while the bass staff maintains its accompaniment.

146

Measures 146-147. Measure 146 shows a more complex treble staff with sixteenth-note patterns and a bass staff with a consistent eighth-note accompaniment. Measure 147 continues this pattern, with the treble staff featuring a melodic line and the bass staff providing accompaniment.

148

Measures 148-150. Measure 148 has a treble staff with eighth-note runs and a bass staff with a steady accompaniment. Measure 149 features a treble staff with a melodic line and a bass staff with a consistent accompaniment. Measure 150 shows a treble staff with a melodic line and a bass staff with a consistent accompaniment, including a triplet of eighth notes in the bass.

151

Measures 151-152. Measure 151 features a treble staff with a melodic line and a bass staff with a consistent accompaniment. Measure 152 continues the treble staff's melodic line and the bass staff's accompaniment.

153

Measures 153-155. Measure 153 has a treble staff with a melodic line and a bass staff with a consistent accompaniment. Measure 154 continues the treble staff's melodic line and the bass staff's accompaniment. Measure 155 shows a treble staff with a melodic line and a bass staff with a consistent accompaniment.

156

Measures 156-158. Measure 156 features a treble staff with a melodic line and a bass staff with a consistent accompaniment. Measure 157 continues the treble staff's melodic line and the bass staff's accompaniment. Measure 158 shows a treble staff with a melodic line and a bass staff with a consistent accompaniment, including a triplet of eighth notes in the bass.

Measures 159-160. The piece is in B-flat major (two flats). Measure 159 features a complex bass line with many beamed sixteenth notes and a treble line with a few notes. Measure 160 continues the bass line with more beamed sixteenth notes and a treble line with a few notes. A fermata is placed over the final note of measure 160.

Measures 161-162. Measure 161 has a treble line with a series of eighth notes and a bass line with a few notes. Measure 162 continues the treble line with eighth notes and a bass line with a few notes. A fermata is placed over the final note of measure 162.

Measures 163-165. Measure 163 has a treble line with a series of eighth notes and a bass line with a few notes. Measure 164 continues the treble line with eighth notes and a bass line with a few notes. Measure 165 continues the treble line with eighth notes and a bass line with a few notes. A fermata is placed over the final note of measure 165.

Measures 166-167. Measure 166 has a treble line with a series of eighth notes and a bass line with a few notes. Measure 167 continues the treble line with eighth notes and a bass line with a few notes. A fermata is placed over the final note of measure 167.

Measures 168-169. Measure 168 has a treble line with a series of eighth notes and a bass line with a few notes. Measure 169 continues the treble line with eighth notes and a bass line with a few notes. A fermata is placed over the final note of measure 169.

Measures 170-171. Measure 170 has a treble line with a series of eighth notes and a bass line with a few notes. Measure 171 continues the treble line with eighth notes and a bass line with a few notes. A fermata is placed over the final note of measure 171.

172

Measures 172-174 of a musical score. The key signature has one flat (B-flat). The music is written for piano with a grand staff (treble and bass clefs). Measure 172 features a triplet of eighth notes in the right hand and a single eighth note in the left hand. Measure 173 continues the triplet in the right hand and has a single eighth note in the left hand. Measure 174 shows a single eighth note in the right hand and a single eighth note in the left hand.

175

Measures 175-178 of a musical score. The key signature has one flat (B-flat). The music is written for piano with a grand staff (treble and bass clefs). Measure 175 features a single eighth note in the right hand and a single eighth note in the left hand. Measure 176 continues the single eighth note in the right hand and has a single eighth note in the left hand. Measure 177 shows a single eighth note in the right hand and a single eighth note in the left hand. Measure 178 features a single eighth note in the right hand and a single eighth note in the left hand.

179

Measures 179-181 of a musical score. The key signature has one flat (B-flat). The music is written for piano with a grand staff (treble and bass clefs). Measure 179 features a single eighth note in the right hand and a single eighth note in the left hand. Measure 180 continues the single eighth note in the right hand and has a single eighth note in the left hand. Measure 181 shows a single eighth note in the right hand and a single eighth note in the left hand.

182

Measures 182-183 of a musical score. The key signature has one flat (B-flat). The music is written for piano with a grand staff (treble and bass clefs). Measure 182 features a single eighth note in the right hand and a single eighth note in the left hand. Measure 183 continues the single eighth note in the right hand and has a single eighth note in the left hand.

184

Measures 184-185 of a musical score. The key signature has one flat (B-flat). The music is written for piano with a grand staff (treble and bass clefs). Measure 184 features a single eighth note in the right hand and a single eighth note in the left hand. Measure 185 continues the single eighth note in the right hand and has a single eighth note in the left hand.

186

Measures 186-187 of a musical score. The key signature has one flat (B-flat). The music is written for piano with a grand staff (treble and bass clefs). Measure 186 features a single eighth note in the right hand and a single eighth note in the left hand. Measure 187 continues the single eighth note in the right hand and has a single eighth note in the left hand.

System 188-189. The left hand plays a continuous eighth-note accompaniment in the bass clef. The right hand features a melody in the treble clef, starting with a half note and followed by eighth notes. A key signature change to one sharp (F#) occurs at the end of the system.

System 190-191. The left hand continues the eighth-note accompaniment. The right hand melody includes a triplet of eighth notes in measure 191.

System 192-193. The left hand continues the eighth-note accompaniment. The right hand melody features a half note in measure 192 and continues with eighth notes in measure 193.

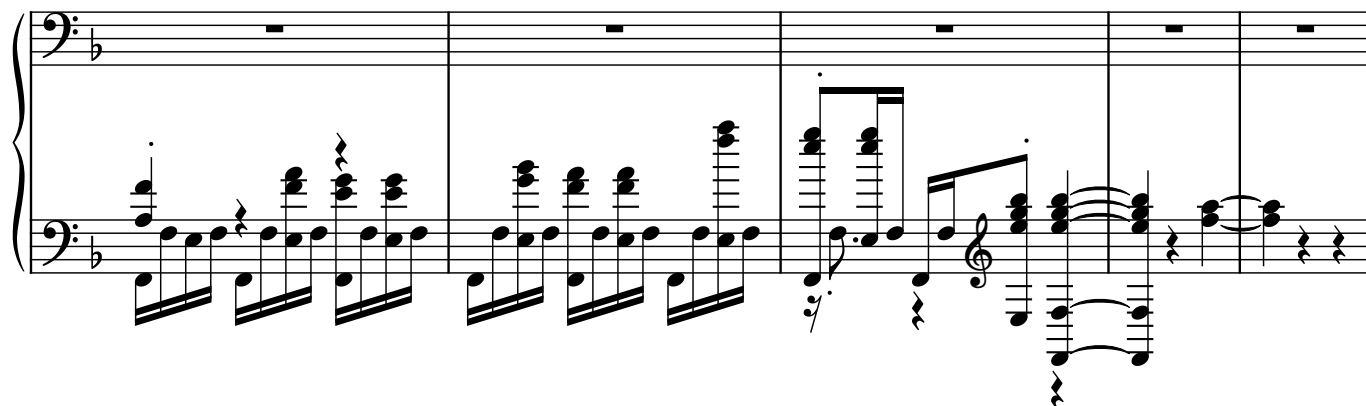
System 194-195. The left hand continues the eighth-note accompaniment. The right hand melody includes a triplet of eighth notes in measure 195.

System 196-197. The left hand continues the eighth-note accompaniment. The right hand melody includes a half note in measure 196 and continues with eighth notes in measure 197.

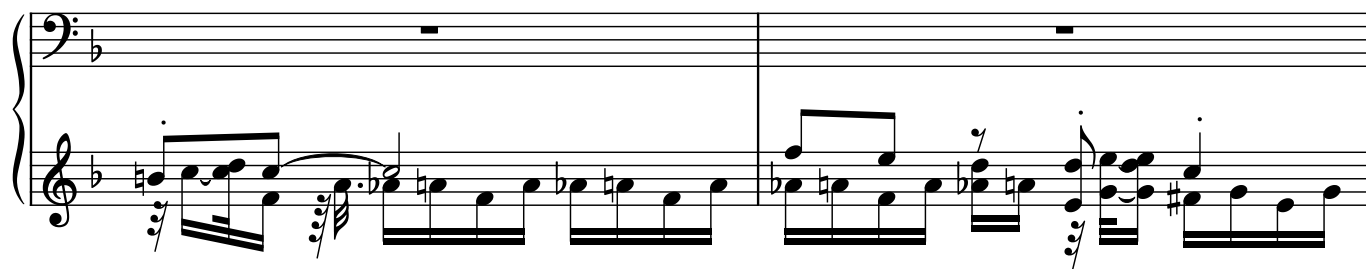
199



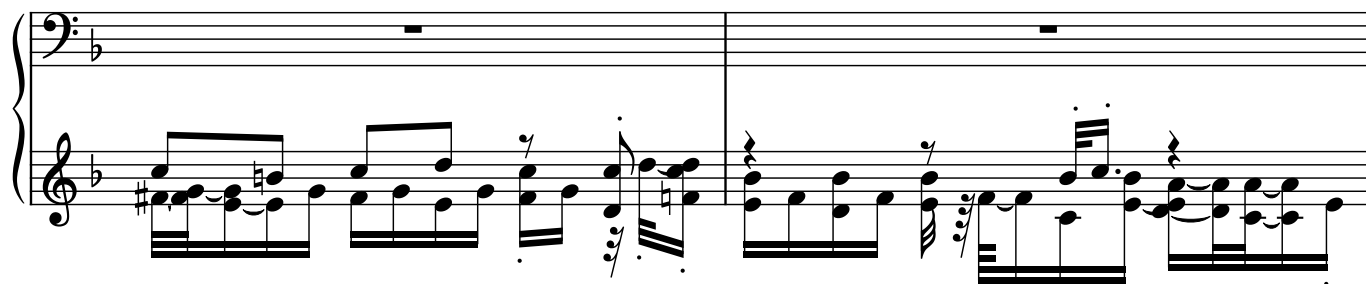
202



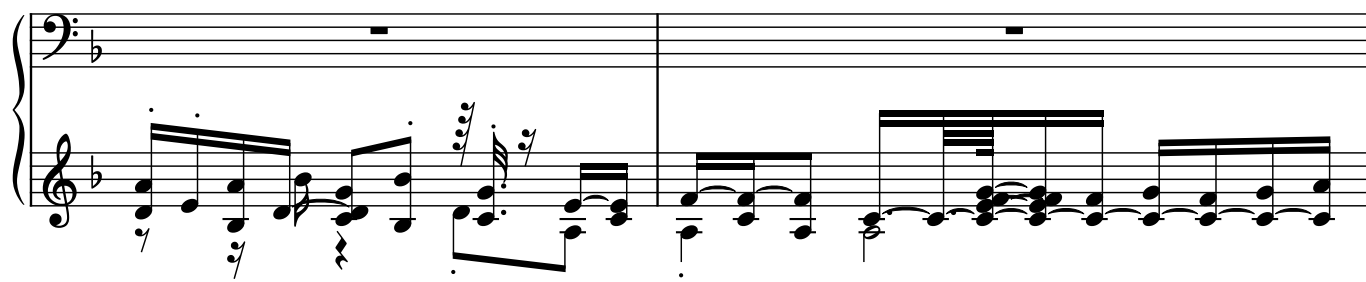
207



209



211



Measures 213-215 of a musical score. The key signature has one flat (B-flat). The bass staff contains whole rests. The treble staff features a melodic line with eighth and sixteenth notes, including a triplet of eighth notes in measure 214 and a group of nine sixteenth notes in measure 215.

Measures 216-217. Both staves are active. The treble staff has a melodic line with eighth and sixteenth notes. The bass staff has a more complex accompaniment with many beamed sixteenth notes.

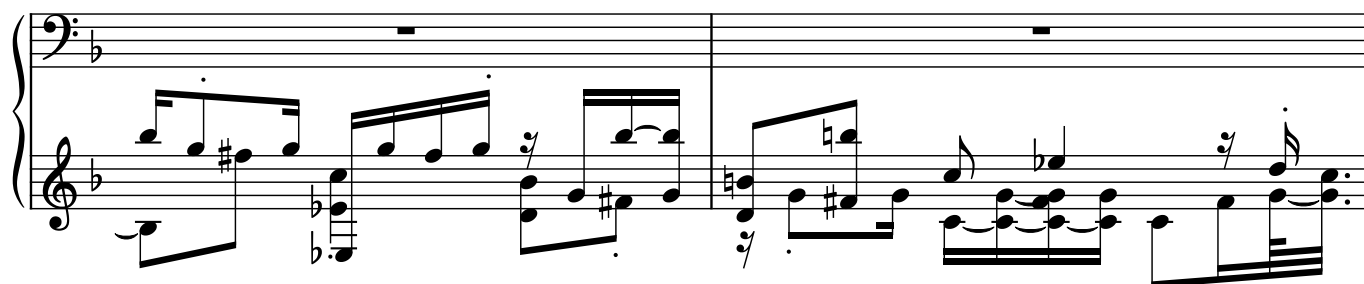
Measures 218-219. The bass staff has whole rests. The treble staff contains a melodic line with eighth and sixteenth notes, including a triplet of eighth notes in measure 219.

Measures 220-222. Both staves are active. The treble staff has a melodic line with eighth and sixteenth notes. The bass staff has a more complex accompaniment with many beamed sixteenth notes.

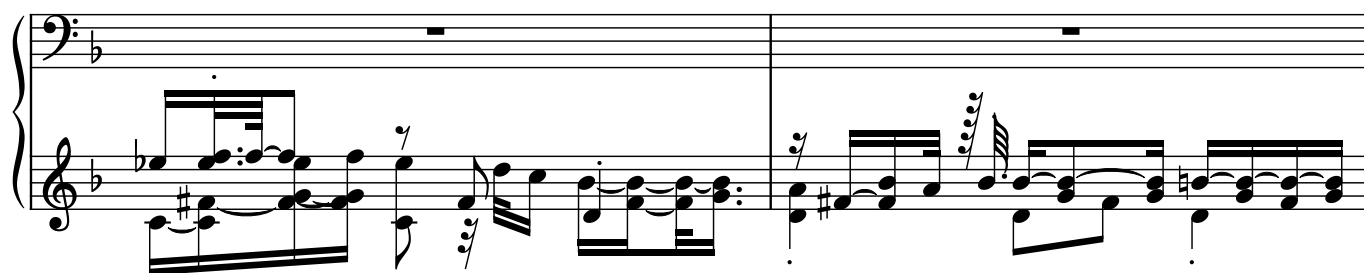
Measures 223-225. Both staves are active. The treble staff has a melodic line with eighth and sixteenth notes, including a triplet of eighth notes in measure 223. The bass staff has a more complex accompaniment with many beamed sixteenth notes.



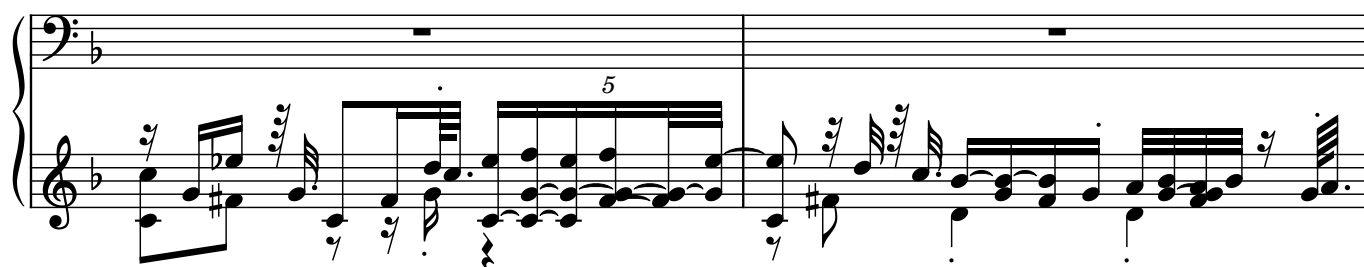
227



229



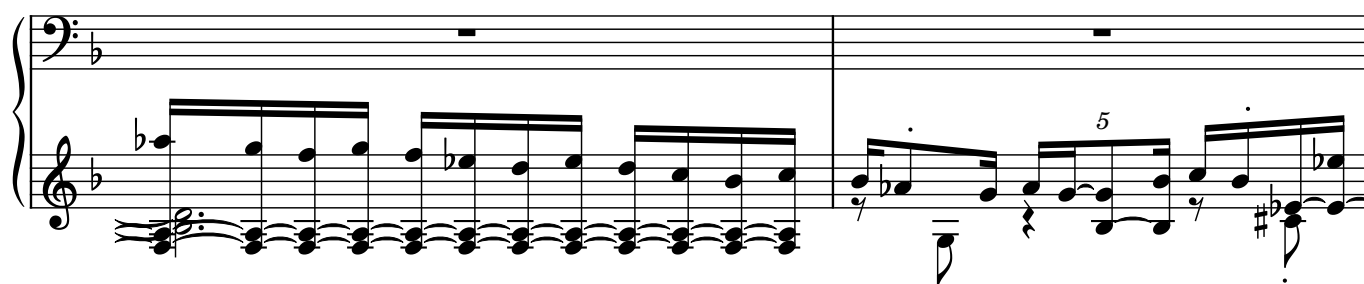
231



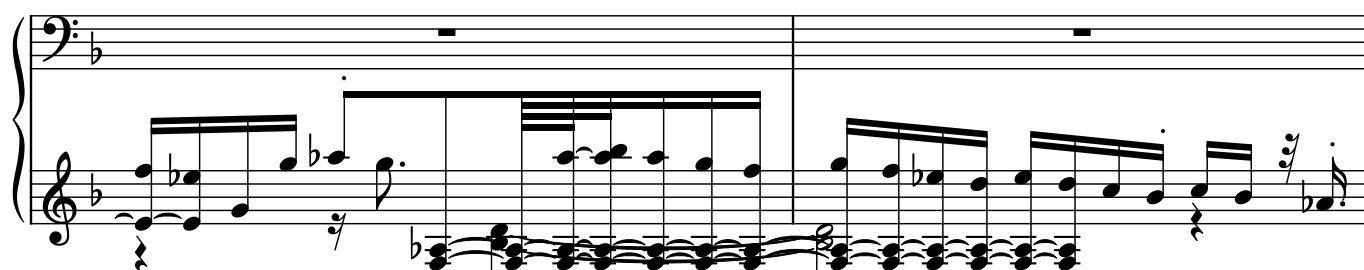
233



236



238



240

System 1 (measures 240-242) features a piano accompaniment in G major. The right hand plays a steady eighth-note pattern, while the left hand provides a harmonic foundation with chords and single notes. Measure 242 includes a triplet of eighth notes in the right hand.

242

System 2 (measures 243-246) continues the piano accompaniment. Measure 243 features a triplet of eighth notes in the right hand. The piece concludes with a final chord in measure 246.

246

System 3 (measures 247-249) shows the piano accompaniment. Measure 249 ends with a final chord.

249

System 4 (measures 250-252) continues the piano accompaniment. Measure 252 ends with a final chord.

252

System 5 (measures 253-255) continues the piano accompaniment. Measure 255 ends with a final chord.

255

System 6 (measures 256-258) continues the piano accompaniment. Measure 258 ends with a final chord.

258

Measures 258-260 of a musical score. The key signature has one flat (B-flat). The bass staff contains whole rests. The treble staff features a complex melodic line with eighth and sixteenth notes, including a triplet of eighth notes in measure 259. The right hand plays chords in the bass register.

261

Measures 261-262. Measure 261 continues the melodic pattern in the treble staff with eighth notes and rests. Measure 262 features a more active treble staff with eighth notes and a triplet, while the bass staff has a whole rest.

263

Measures 263-264. Measure 263 shows a melodic line in the treble staff with eighth notes and a triplet. Measure 264 continues with a similar pattern, including a triplet of eighth notes. The bass staff has whole rests.

265

Measures 265-268. Measure 265 has a melodic line in the treble staff. Measure 266 features a more active treble staff with eighth notes and a triplet. Measure 267 continues the melodic pattern. Measure 268 shows a melodic line in the treble staff with eighth notes and a triplet. The bass staff has whole rests.

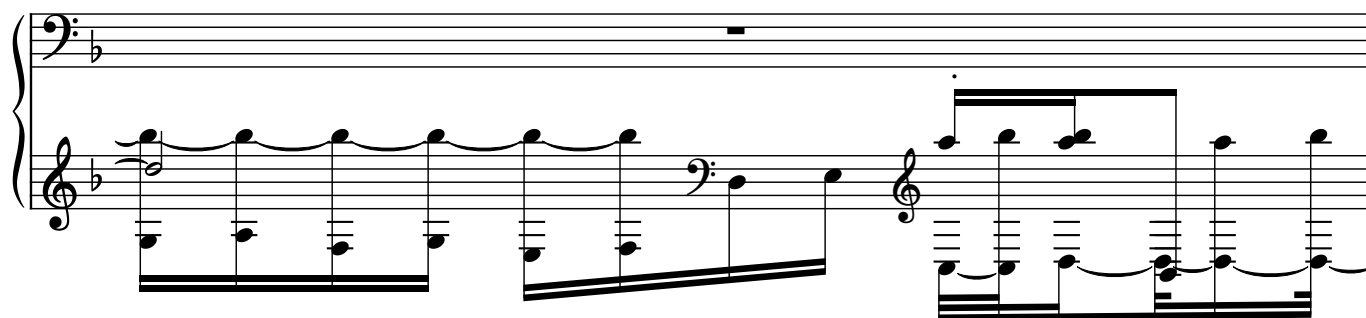
269

Measures 269-272. Measure 269 has a melodic line in the treble staff. Measure 270 continues the melodic pattern. Measure 271 features a more active treble staff with eighth notes and a triplet. Measure 272 shows a melodic line in the treble staff with eighth notes and a triplet. The bass staff has whole rests.

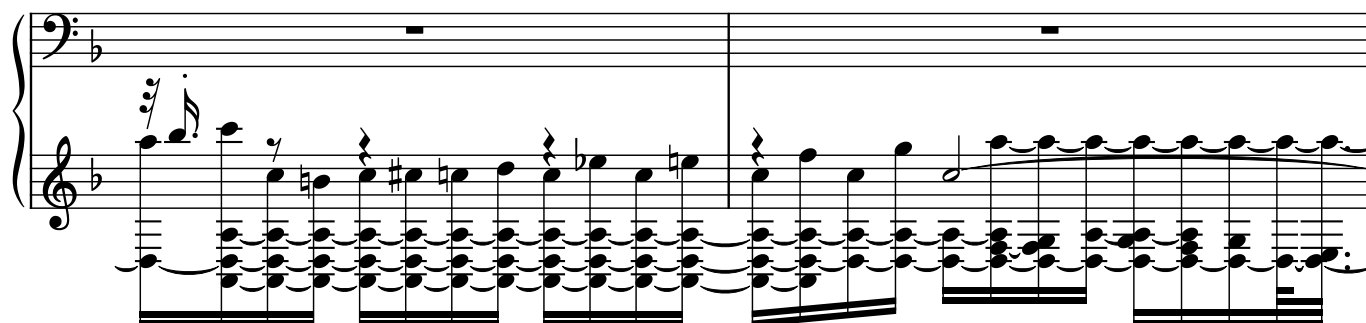
273

Measures 273-276. Measure 273 has a melodic line in the treble staff. Measure 274 continues the melodic pattern. Measure 275 features a more active treble staff with eighth notes and a triplet. Measure 276 shows a melodic line in the treble staff with eighth notes and a triplet. The bass staff has whole rests.

275



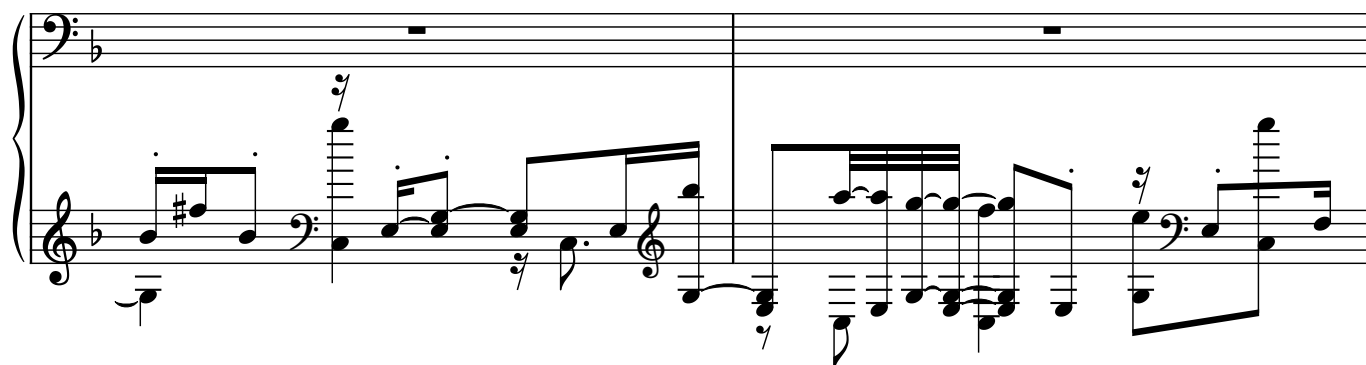
276



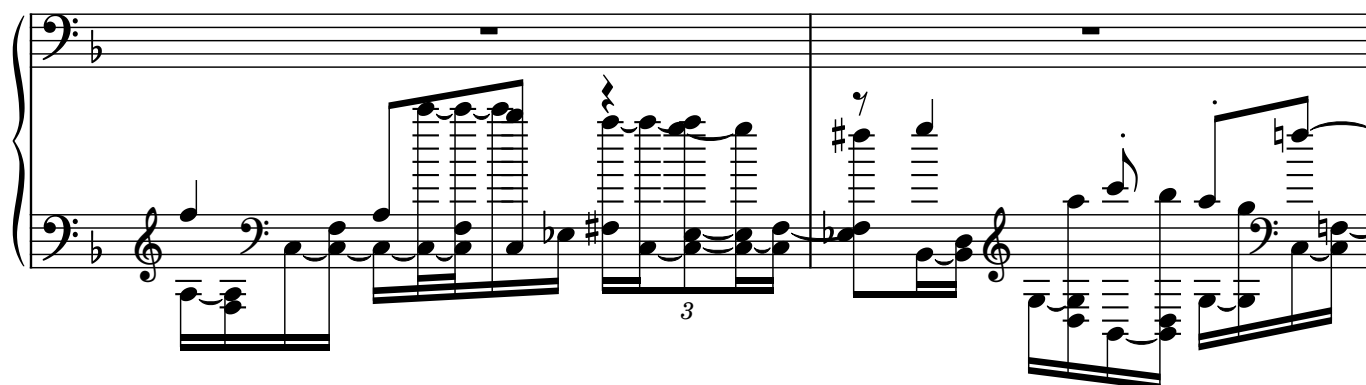
278



280



282



284

Measures 284-285. The system consists of two staves. The left staff is in bass clef with a key signature of one flat (B-flat). It contains a series of chords and single notes, including a triplet of eighth notes in measure 285. The right staff is in treble clef and contains a melodic line with eighth and sixteenth notes, ending with a triplet of eighth notes in measure 285.

285

Measures 286-287. The system consists of two staves. The left staff is in bass clef with a key signature of one flat. It features a complex texture with many beamed sixteenth and thirty-second notes. The right staff is in treble clef and contains a melodic line with eighth notes and a triplet of eighth notes in measure 287.

287

Measures 288-289. The system consists of two staves. The left staff is in bass clef with a key signature of one flat, containing a series of chords and single notes. The right staff is in treble clef and contains a melodic line with eighth notes and a triplet of eighth notes in measure 289.

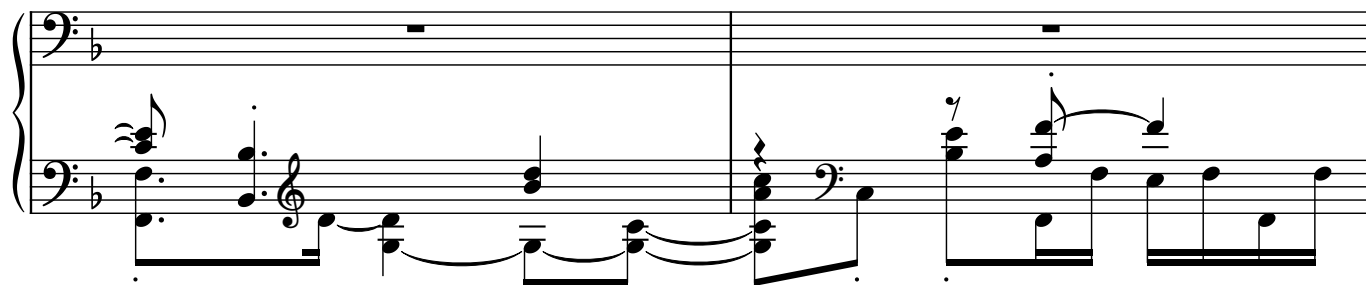
289

Measures 290-291. The system consists of two staves. The left staff is in bass clef with a key signature of one flat, containing a series of chords and single notes. The right staff is in treble clef and contains a melodic line with eighth notes and a triplet of eighth notes in measure 291.

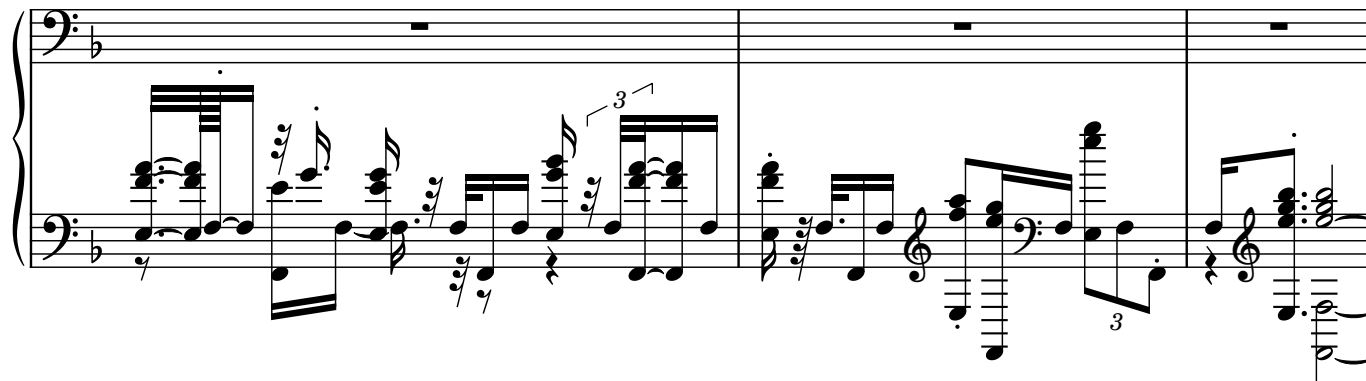
291

Measures 292-293. The system consists of two staves. The left staff is in bass clef with a key signature of one flat, containing a series of chords and single notes. The right staff is in treble clef and contains a melodic line with eighth notes and a triplet of eighth notes in measure 293.

294



296



299

