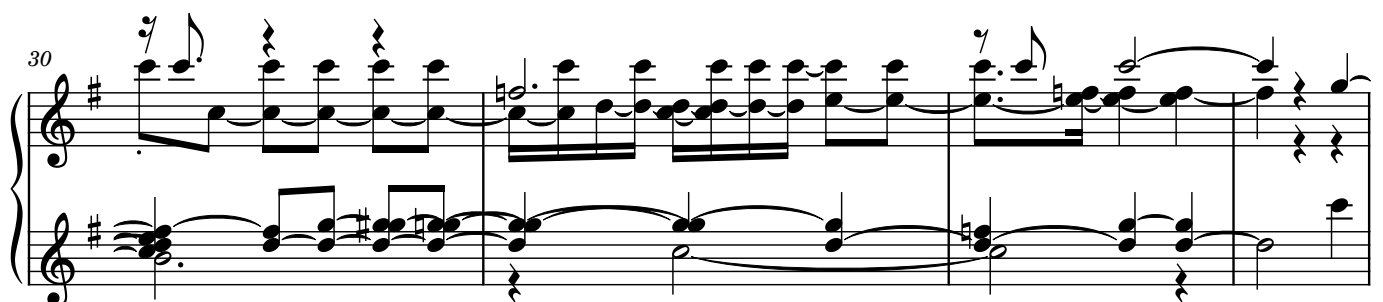
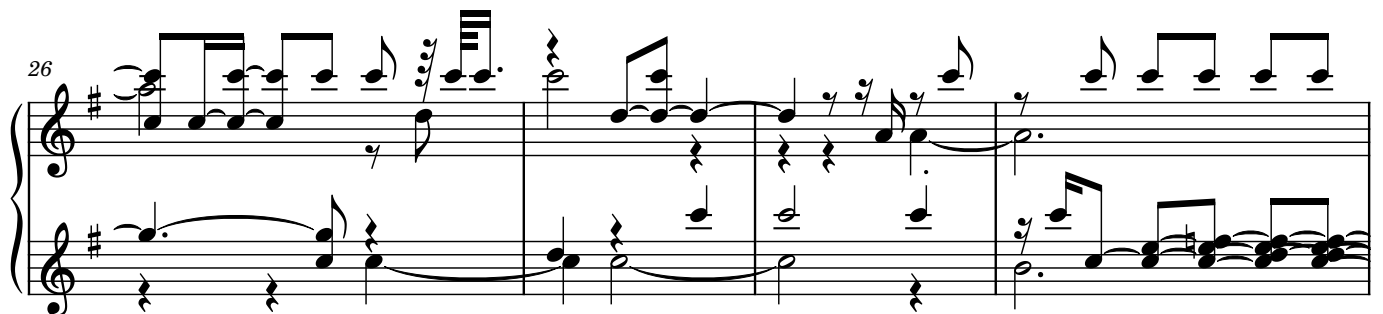
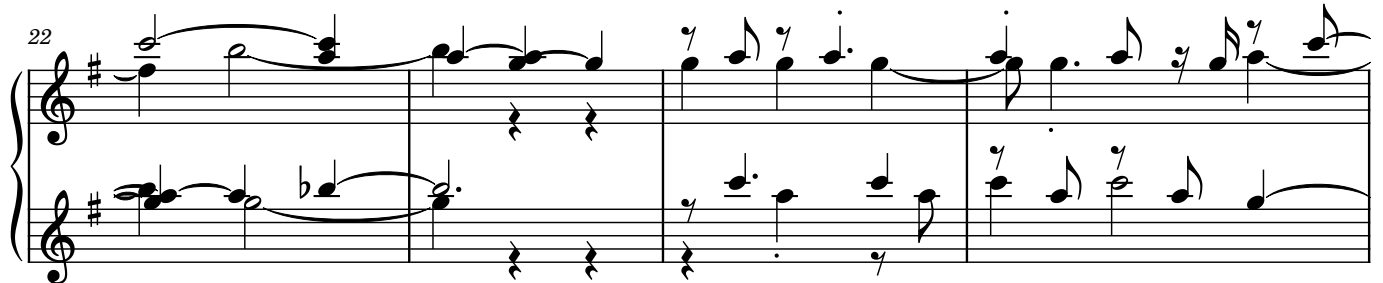
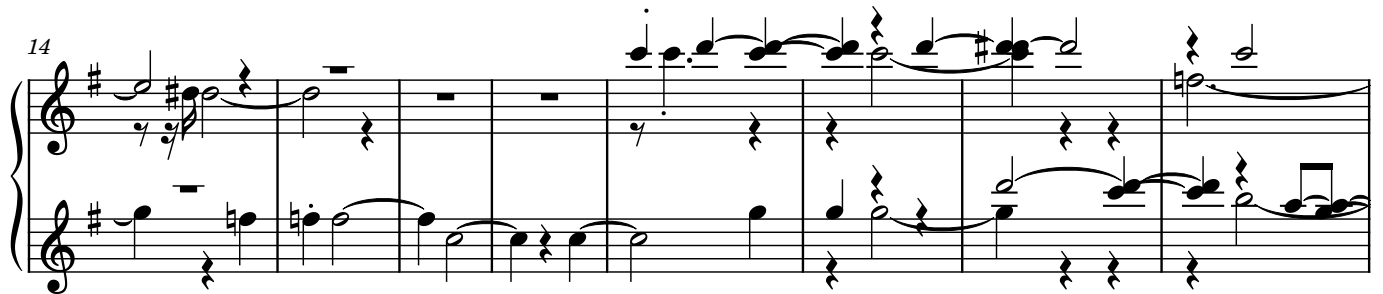
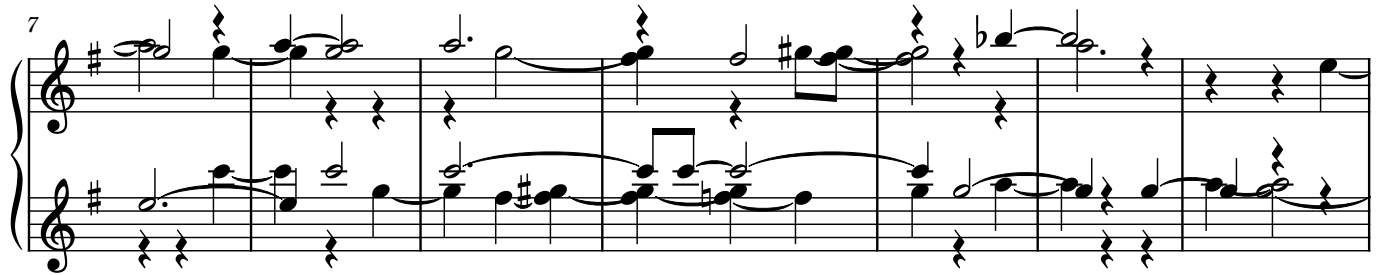
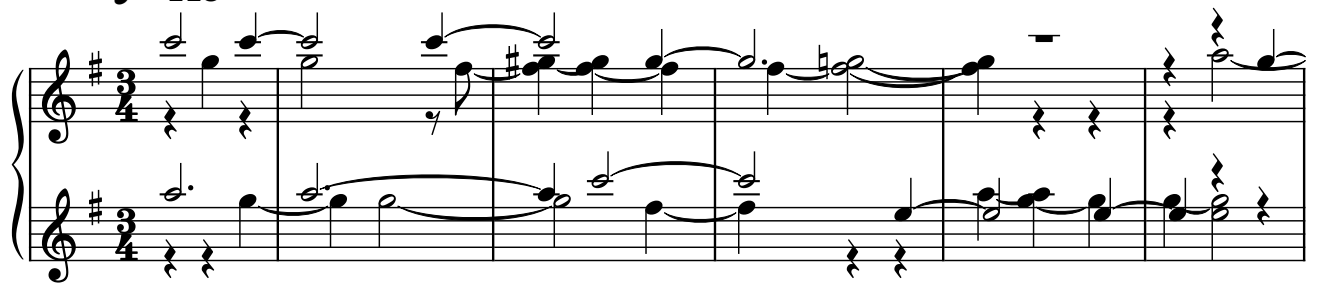


♩ = 115



34

This system contains measures 34 through 39. The right hand features a complex melodic line with many beamed sixteenth and thirty-second notes, often with grace notes. The left hand provides a harmonic accompaniment with chords and moving lines, including some triplets.

40

This system contains measures 40 through 46. The right hand continues with intricate melodic patterns, including some slurs and ties. The left hand has more rests in measures 43-46, while the right hand carries the melody.

47

This system contains measures 47 and 48. Measure 47 shows a final chord in the right hand and a whole note in the left hand. Measure 48 consists of whole rests in both staves, indicating the end of the piece.