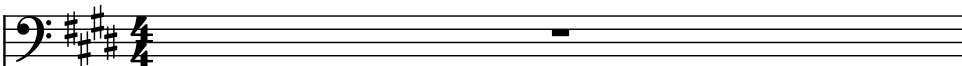
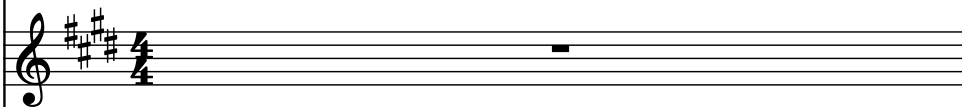


♩ = 126

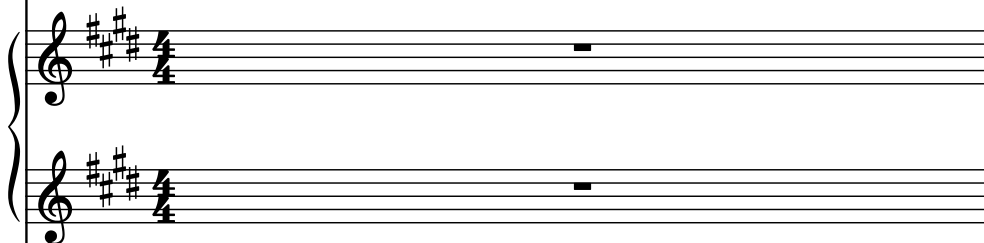
Electric Bass, bass



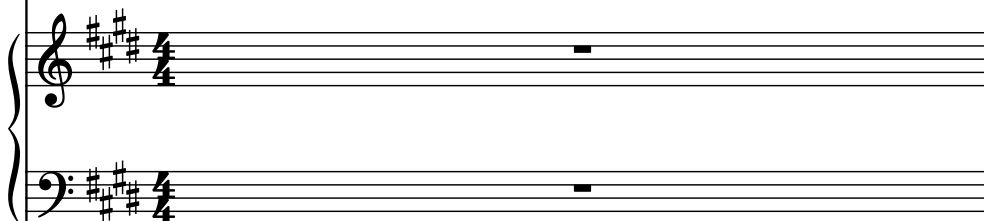
Sine Synthesizer, air synth



Effect Synthesizer, MIDI out



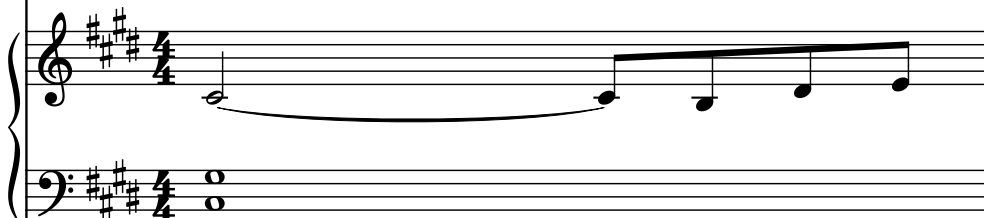
Saw Synthesizer, chord lead



Effect Synthesizer, arp synth



Percussive Organ, chord bass



El. B.

Synth.

Synth.

Synth.

Synth.

Perc. Org.

El. B.

Synth.

Synth.

Synth.

Synth.

Perc. Org.

4

El. B.

Synth.

Synth.

Synth.

Synth.

Perc. Org.

El. B.

Synth.

Synth.

Synth.

Synth.

Perc. Org.

El. B.

Synth.

Synth.

Synth.

Synth.

Perc. Org.

El. B. staff: Bass clef, E major key signature. Measure 1: whole rest. Measure 2: whole rest. Measure 3: quarter note G4.

Synth. staff: Treble clef, E major key signature. Measure 1: whole rest. Measure 2: whole rest. Measure 3: quarter note G4.

Synth. staff: Treble clef, E major key signature. Measure 1: quarter note G4. Measure 2: quarter note A4. Measure 3: quarter note B4.

Synth. staff: Treble clef, E major key signature. Measure 1: quarter note G4. Measure 2: quarter note A4. Measure 3: quarter note B4.

Synth. staff: Treble clef, E major key signature. Measure 1: quarter note G4. Measure 2: quarter note A4. Measure 3: quarter note B4.

Perc. Org. staff: Treble and Bass clefs, E major key signature. Measure 1: whole rest. Measure 2: whole rest. Measure 3: quarter note G4.

10

El. B.

Synth.

Synth.

Synth.

Synth.

Perc. Org.

The musical score for page 10, system 5, consists of six staves. The key signature is three sharps (F#, C#, G#). The El. B. staff has a melodic line with eighth and sixteenth notes. The Synth. staves have various accompaniment patterns, including chords and moving lines. The Perc. Org. staves are currently empty.

El. B.

Synth.

Synth.

Synth.

Synth.

Perc. Org.

The musical score for page 13 consists of seven staves. The first staff, labeled 'El. B.', is in bass clef and contains a melodic line with eighth and sixteenth notes. The second staff, labeled 'Synth.', is in treble clef and contains a melodic line with eighth and sixteenth notes. The third and fourth staves, both labeled 'Synth.', are grouped by a brace and contain a complex texture of chords and moving lines. The fifth staff, labeled 'Synth.', is in treble clef and contains a melodic line with eighth and sixteenth notes. The sixth staff, labeled 'Synth.', is in bass clef and contains a complex texture of chords and moving lines. The seventh staff, labeled 'Perc. Org.', is in treble clef and contains a complex texture of chords and moving lines. The key signature is three sharps (F#, C#, G#) and the time signature is 4/4.

16

El. B.

Synth.

Synth.

Synth.

Synth.

Perc. Org.

The musical score for measures 16-18 is written for five staves. The key signature is three sharps (F#, C#, G#). The El. B. staff has a single line of music. The Synth. staves have multiple lines of music, including chords and single notes. The Perc. Org. staves are empty.