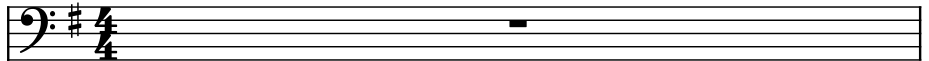


♩ = 120

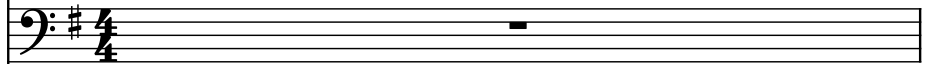
Violoncello, Cello



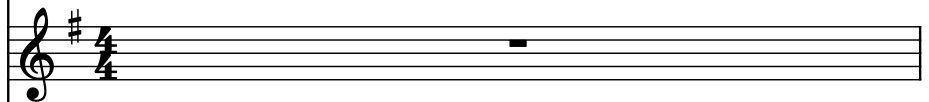
Electric Guitar, Electric Guitar



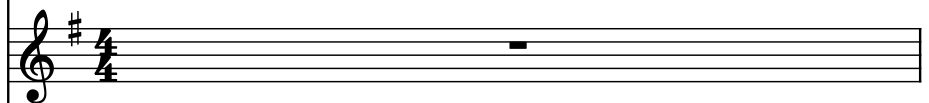
Fretless Electric Bass, Bass



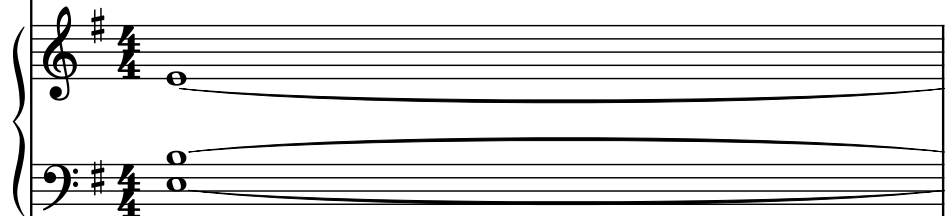
Piano, piano



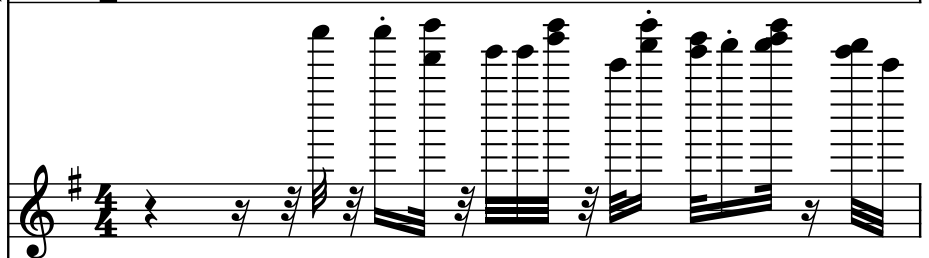
Chimes, Tubular Bells



Effect Synthesizer, sustain



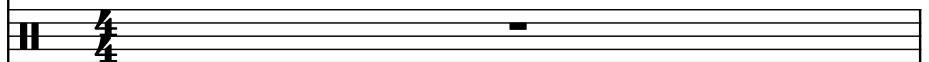
Harp, Bells



Electric Guitar, Distortion Guitar



Drumset, Percussion



2

Vc.

El. Guit.

Frtl. El. B.

Pno.

Cme.

Synth.

Hrp.

El. Guit.

D. Set

7

Vc.

El. Guit.

Frtl. El. B.

Pno.

Cme.

Synth.

Hrp.

El. Guit.

D. Set

This musical score page contains measures 7 and 8 of a piece. The instruments and their parts are as follows:

- Vc. (Violoncello):** Measure 7 has a half note G2, quarter notes F#2, E2, and D2, and a half note C2. Measure 8 has a half note B1.
- El. Guit. (Electric Guitar):** Measures 7 and 8 are silent.
- Frtl. El. B. (Fretless Electric Bass):** Measure 7 has a half note G1, and measure 8 has a half note F#1.
- Pno. (Piano):** Measures 7 and 8 are silent.
- Cme. (Cymbal):** Measure 7 has a cymbal hit, and measure 8 is silent.
- Synth. (Synthesizer):** Measure 7 has a half note G2 in the treble and a half note G1 in the bass. Measure 8 has a half note F#2 in the treble and a half note F#1 in the bass.
- Hrp. (Harp):** Measures 7 and 8 are silent.
- El. Guit. (Electric Guitar):** Measure 7 has a quarter note G4, eighth notes F#4 and E4, and a quarter note D4. Measure 8 has a quarter note C4, eighth notes B3 and A3, and a quarter note G3.
- D. Set (Drum Set):** Measure 7 has a quarter note G, eighth notes F and E, and a quarter note D. Measure 8 has a quarter note C, eighth notes B and A, and a quarter note G.

9

Vc.

El. Guit.

Frtl. El. B.

Pno.

Cme.

Synth.

Hrp.

El. Guit.

D. Set

9

10

11

11

Vc.

El. Guit.

Frtl. El. B.

Pno.

Cme.

Synth.

Hrp.

El. Guit.

D. Set

8

8

8

8

8

8

8

8

8

13

Vc.

El. Guit.

Frtl. El. B.

Pno.

Cme.

Synth.

Hrp.

El. Guit.

D. Set

The musical score for page 13 is written for a multi-instrument ensemble. The instruments are arranged vertically: Vc. (Violoncello), El. Guit. (Electric Guitar), Frtl. El. B. (Fretless Electric Bass), Pno. (Piano), Cme. (Cymbal), Synth. (Synthesizer), Hrp. (Harp), El. Guit. (Electric Guitar), and D. Set (Drum Set). The key signature is one sharp (F#), and the time signature is 8/8. The Vc. part consists of whole rests in both measures. The El. Guit. part features a melodic line with eighth and sixteenth notes, including a triplet in the first measure. The Frtl. El. B. part plays a simple bass line with half notes. The Pno. part has whole rests. The Cme. part plays a single cymbal hit in the first measure. The Synth. part features a sustained chord in the first measure and a melodic line in the second. The Hrp. part has whole rests. The El. Guit. part plays a complex, fast-paced melodic line with many sixteenth notes. The D. Set part features a complex drum pattern with many sixteenth notes and rests.

15

Vc.

El. Guit.

Frtl. El. B.

Pno.

Cme.

Synth.

Hrp.

El. Guit.

D. Set

17

Vc.

El. Guit.

Frtl. El. B.

Pno.

Cme.

Synth.

Hrp.

El. Guit.

D. Set

The musical score for measures 17 and 18 is as follows:

- Measure 17:**
 - Vc.:** Bass clef, key of D major. Notes: D4 (quarter), E4 (quarter), F#4 (quarter), G#4 (quarter), A4 (quarter), B4 (quarter), C5 (half).
 - El. Guit.:** Treble clef, key of D major. Notes: D4 (quarter), E4 (quarter), F#4 (quarter), G#4 (quarter), A4 (quarter), B4 (quarter), C5 (half).
 - Frtl. El. B.:** Bass clef, key of D major. Notes: D4 (quarter), E4 (quarter), F#4 (quarter), G#4 (quarter), A4 (quarter), B4 (quarter), C5 (half).
 - Pno.:** Treble clef, key of D major. Notes: D4 (quarter), E4 (quarter), F#4 (quarter), G#4 (quarter), A4 (quarter), B4 (quarter), C5 (half).
 - Cme.:** Treble clef, key of D major. Notes: D4 (quarter), E4 (quarter), F#4 (quarter), G#4 (quarter), A4 (quarter), B4 (quarter), C5 (half).
 - Synth.:** Treble clef, key of D major. Notes: D4 (quarter), E4 (quarter), F#4 (quarter), G#4 (quarter), A4 (quarter), B4 (quarter), C5 (half).
 - Hrp.:** Treble clef, key of D major. Notes: D4 (quarter), E4 (quarter), F#4 (quarter), G#4 (quarter), A4 (quarter), B4 (quarter), C5 (half).
- Measure 18:**
 - El. Guit.:** Treble clef, key of D major. Notes: D4 (quarter), E4 (quarter), F#4 (quarter), G#4 (quarter), A4 (quarter), B4 (quarter), C5 (half).
 - D. Set:** Treble clef, key of D major. Notes: D4 (quarter), E4 (quarter), F#4 (quarter), G#4 (quarter), A4 (quarter), B4 (quarter), C5 (half).

19

Vc.

El. Guit.

Frtl. El. B.

Pno.

Cme.

Synth.

Hrp.

El. Guit.

D. Set

21

Vc.

El. Guit.

Frtl. El. B.

Pno.

Cme.

Synth.

Hrp.

El. Guit.

D. Set

The musical score for page 21 features ten staves. The top staff (Vc.) and the bottom staff (D. Set) are mostly silent, with a few notes at the beginning and end. The second staff (El. Guit.) and the fourth staff (Frtl. El. B.) play sustained notes. The fifth staff (Pno.) plays a series of chords. The sixth staff (Cme.) plays a series of notes. The seventh staff (Synth.) plays a series of notes. The eighth staff (Hrp.) plays a series of notes. The ninth staff (El. Guit.) plays a series of notes. The tenth staff (D. Set) plays a series of notes.

Musical notation showing a sequence of notes with frequencies: 119, 118, 117, 116, 115, 114, 113, 112, 111, 110, 109, 108, 107, 106, 105, 104, 103, 102, 101, 100.

23

Vc.

El. Guit.

Frtl. El. B.

Pno.

Cme.

Synth.

Hrp.

El. Guit.

12

24

79
80
81
82
83
84
85
86
87
88
89
90
91
92
93
94
95
96
97
98
99

41

Vc.

El. Guit.

Frtl. El. B.

Pno.

Cme.

Synth.

Hrp.

El. Guit.

Downloaded from www.midicities.com