

♩ = 176

Strings, Effect



Piano, Piano



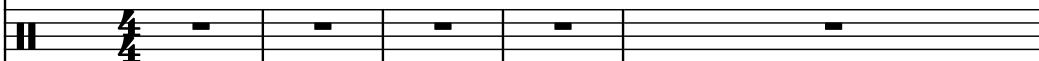
Electric Guitar, Guitar



5-str. Electric Bass, Bass

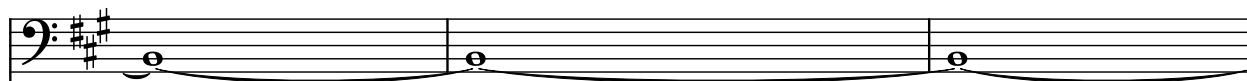


Drumset, Drums



6

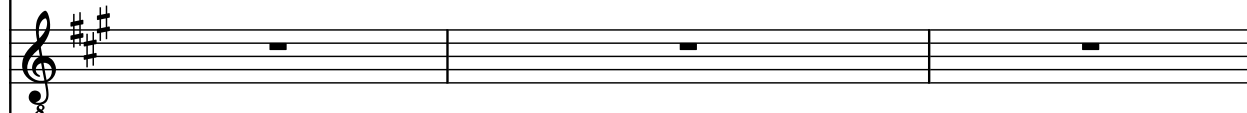
St.



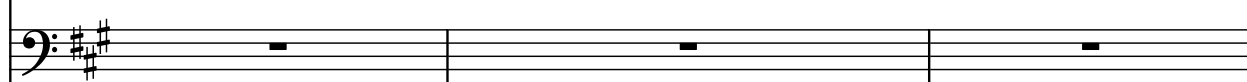
Pno.



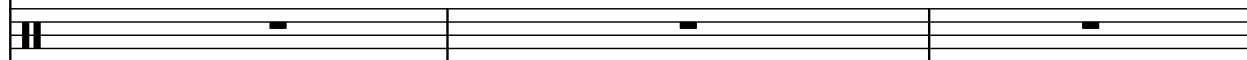
El. Guit.



El. B.



D. Set



9

St. Pno. El. Guit. El. B. D. Set

9

12

St. Pno. El. Guit. El. B. D. Set

12

15

St. Pno. El. Guit. El. B. D. Set

St. Pno. El. Guit. El. B. D. Set

18

St. Pno. El. Guit. El. B. D. Set

St. Pno. El. Guit. El. B. D. Set

21

St. Pno. El. Guit. El. B. D. Set

This musical system covers measures 21 to 23. The St. (Soprano) part features a long note in measure 21, followed by a half note in measure 22, and a whole note in measure 23. The Pno. (Piano) part has a complex melody with eighth and sixteenth notes, including a triplet in measure 22. The El. Guit. (Electric Guitar) part plays a steady eighth-note chordal pattern. The El. B. (Electric Bass) part plays a simple eighth-note line. The D. Set (Drum Set) part includes a kick drum pattern with snare and cymbal accents.

24

St. Pno. El. Guit. El. B. D. Set

This musical system covers measures 24 to 26. The St. (Soprano) part continues with a long note in measure 24, followed by a half note in measure 25, and a whole note in measure 26. The Pno. (Piano) part maintains its complex melodic line with eighth and sixteenth notes. The El. Guit. (Electric Guitar) part continues with the same eighth-note chordal pattern. The El. B. (Electric Bass) part continues with the same eighth-note line. The D. Set (Drum Set) part continues with the same kick drum pattern and snare/cymbal accents.

27

St. 

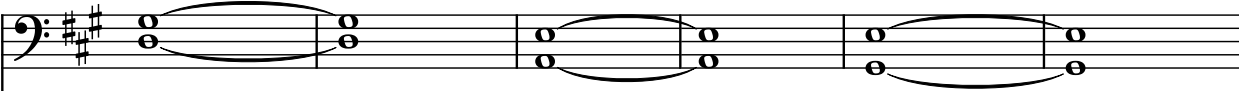
Pno. 

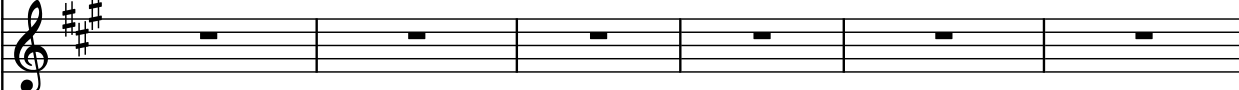
El. Guit. 

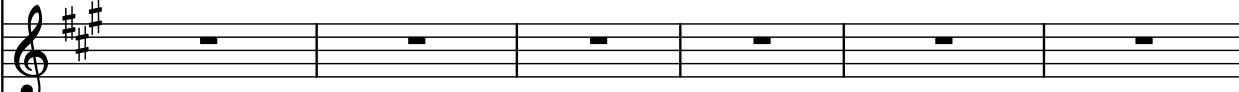
El. B. 

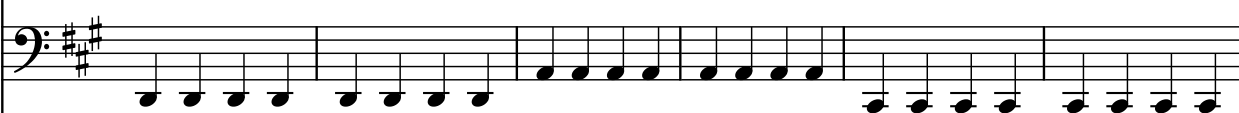
D. Set 


31

St. 

Pno. 

El. Guit. 

El. B. 

D. Set 

37

St.

Pno.

El. Guit.

El. B.

D. Set

43

St.

Pno.

El. Guit.

El. B.

D. Set

47

St.

Pno.

El. Guit.

El. B.

D. Set

St. part: Two melodic phrases, each starting with a grace note. The first phrase is in the treble clef, and the second is in the bass clef. The Pno. part: Sustained chords in the treble clef. The El. Guit. part: A single note (F#) with a grace note in the treble clef. The El. B. part: A steady eighth-note bass line. The D. Set part: A steady eighth-note drum pattern.

51

St.

Pno.

El. Guit.

El. B.

D. Set

St. part: A melodic phrase in the treble clef and a sustained chord in the bass clef. The Pno. part: Sustained chords in the treble clef. The El. Guit. part: A single note (F#) with a grace note in the treble clef. The El. B. part: A steady eighth-note bass line. The D. Set part: A steady eighth-note drum pattern.

56

St. Pno. El. Guit. El. B. D. Set

56 57 58 59

60

St. Pno. El. Guit. El. B. D. Set

60 61 62 63

63

St. Pno. El. Guit. El. B. D. Set

66

St. Pno. El. Guit. El. B. D. Set

69

St.

Pno.

El. Guit.

El. B.

D. Set

72

St.


Pno.


El. Guit.

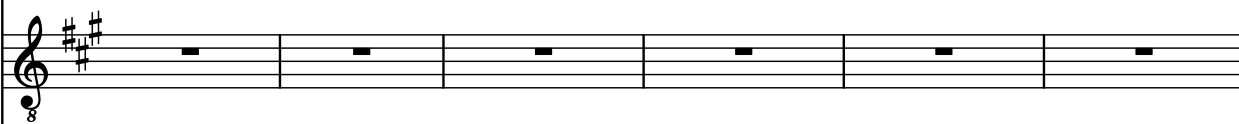
El. B.


D. Set


77

St. 

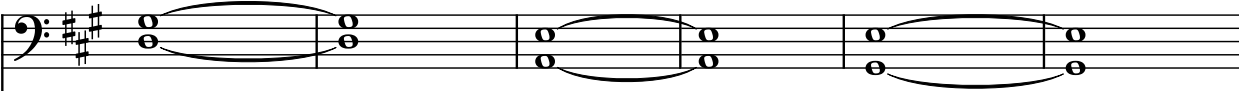
Pno. 

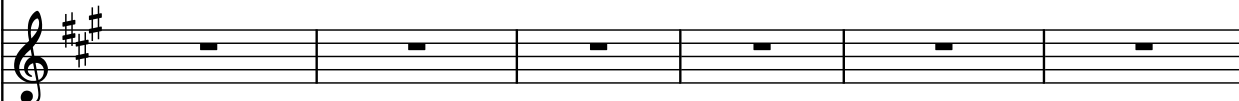
El. Guit. 

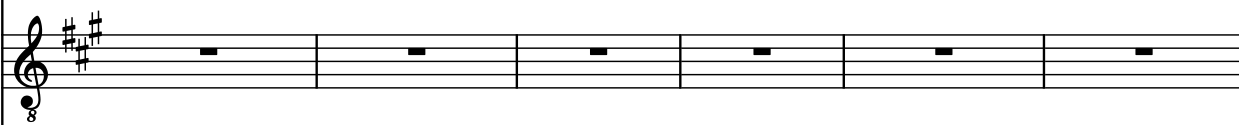
El. B. 


D. Set 


83

St. 

Pno. 

El. Guit. 

El. B. 

D. Set 

89

St.

Pno.

El. Guit.

El. B.

D. Set

Measures 89-92. The Saxophone (St.) part features a melodic line with grace notes and slurs. The Piano (Pno.) part has a sustained chord. The Electric Guitar (El. Guit.) part has a sustained chord. The Electric Bass (El. B.) part has a steady eighth-note rhythm. The Double Bass (D. Set) part has a complex rhythmic pattern with slurs and ties.

93

St.

Pno.


El. Guit.


El. B.


D. Set

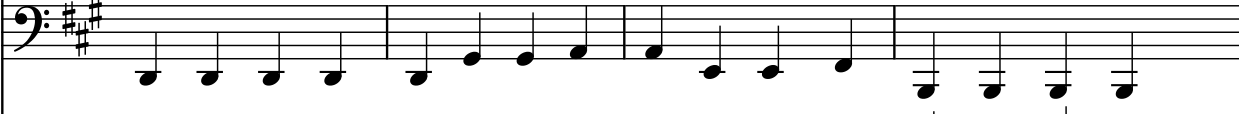
Measures 93-96. The Saxophone (St.) part features a melodic line with grace notes and slurs, ending with a sustained note. The Piano (Pno.) part has a sustained chord. The Electric Guitar (El. Guit.) part has a sustained chord. The Electric Bass (El. B.) part has a steady eighth-note rhythm. The Double Bass (D. Set) part has a complex rhythmic pattern with slurs and ties.


98

St. 

Pno. 

El. Guit. 

El. B. 

D. Set 

102

St. 

Pno. 

El. Guit. 

El. B. 

D. Set 

105

St. Pno. El. Guit. El. B. D. Set

This musical system covers measures 105 to 107. The Soprano (St.) part consists of three whole notes: G4, A4, and B4. The Piano (Pno.) part features a complex melodic line with eighth and sixteenth notes, including triplets and slurs. The Electric Guitar (El. Guit.) part plays a steady eighth-note chordal pattern. The Electric Bass (El. B.) part provides a simple eighth-note bass line. The Drum Set (D. Set) part includes a pattern of eighth notes with 'x' marks indicating cymbal hits on specific beats.

108

St. Pno. El. Guit. El. B. D. Set

This musical system covers measures 108 to 110. The Soprano (St.) part continues with whole notes: C5, D5, and E5. The Piano (Pno.) part continues its intricate melodic development. The Electric Guitar (El. Guit.) part maintains its eighth-note chordal texture. The Electric Bass (El. B.) part continues with an eighth-note bass line. The Drum Set (D. Set) part follows the established rhythmic pattern with cymbal accents.

111

St. Pno. El. Guit. El. B. D. Set

111 112 113

114

St. Pno. El. Guit. El. B. D. Set

114 115 116

117

120

St.

Pno.

El. Guit.

El. B.

D. Set

126

Pdf downloaded from www.midicities.com

129

St.

Pno.

El. Guit.

El. B.

D. Set

141

St.

Pno.

El. Guit.

El. B.

D. Set

149

St. Pno. El. Guit. El. B. D. Set

149 150 151

152

St. Pno. El. Guit. El. B. D. Set

152 153 154

155

St. Pno. El. Guit. El. B. D. Set

155 156 157

158

St. Pno. El. Guit. El. B. D. Set

158 159 160

161

St. Pno. El. Guit. El. B. D. Set

161 162 163

164

St. Pno. El. Guit. El. B. D. Set

164 165 166

167

St. Pno. El. Guit. El. B. D. Set

167 168 169

170

St. Pno. El. Guit. El. B. D. Set

170 171 172

173

St. Pno. El. Guit. El. B. D. Set