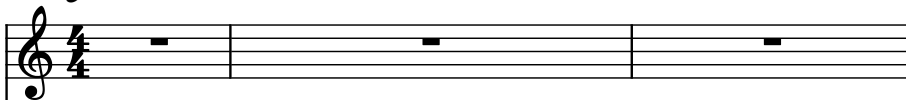


♩ = 122

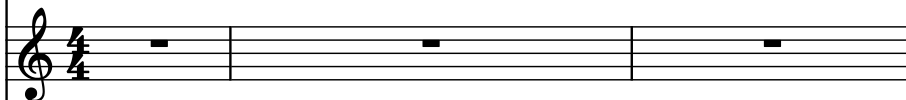
B♭ Trumpet, Chorus Vocals



Tuned Klaxon Horns, Synth Lick



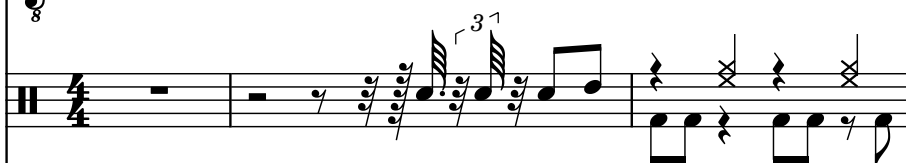
Voice, Prechorus Vocals



Electric Guitar, Breakdown



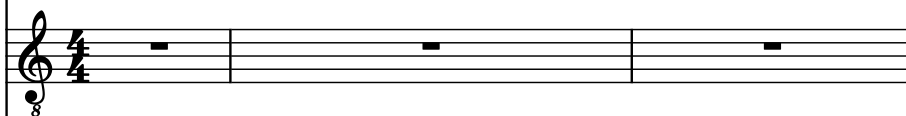
Drumset, Drums



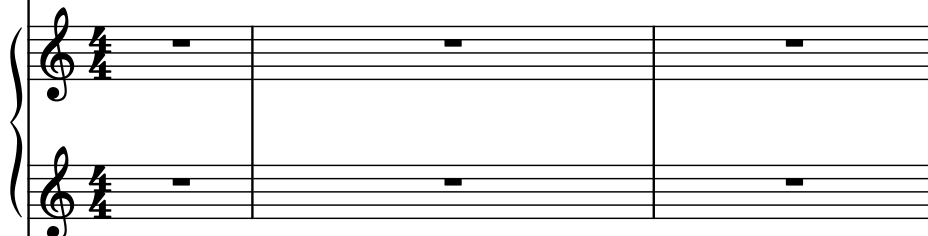
Electric Bass, Bass Guitar



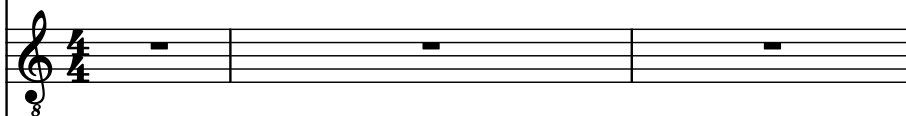
Electric Guitar, Fender



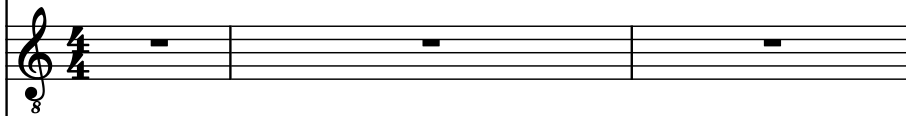
Electric Piano, Piano



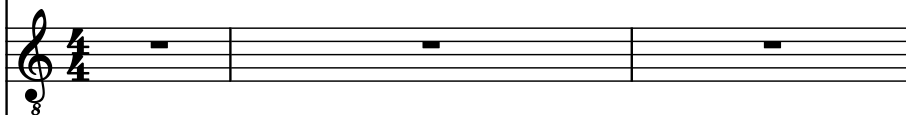
Acoustic Guitar, Gibson



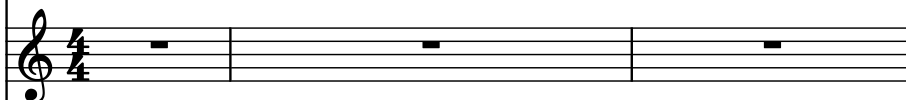
Acoustic Guitar, Acoustic Rhythm



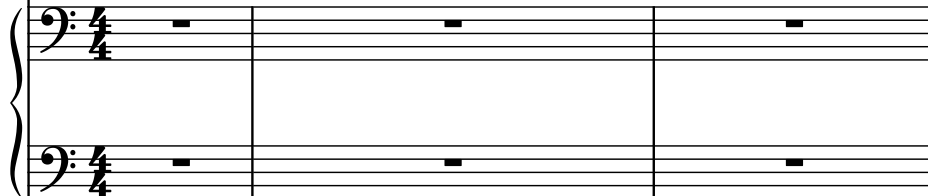
Electric Guitar, Rhythm Double



Soprano, Verse Vocals



Clavichord, Low Rhythm



4

B \flat Tpt.

Klx. Hns.

Vo.

El. Guit.

D. Set

El. B.

El. Guit.

El. Pno.

Guit.

Guit.

El. Guit.

S.

Cch.

aded from www.musidicities.com

7

B \flat Tpt.

Tn. Klx. Hns.

Vo.

El. Guit.

D. Set

El. B.

El. Guit.

El. Pno.

Guit.

Guit.

El. Guit.

S.

Cch.

Musical score for page 3, measure 7. The score includes staves for B \flat Tpt., Tn. Klx. Hns., Vo., El. Guit., D. Set, El. B., El. Guit., El. Pno., Guit., Guit., El. Guit., S., and Cch. The D. Set and El. B. staves show active musical notation, while others are mostly rests or have specific chordal figures.

9

B \flat Tpt.

Tn. Klx. Hns.

Vo.

El. Guit.

D. Set

El. B.

El. Guit.

El. Pno.

Guit.

Guit.

El. Guit.

S.

Cch.

11

B \flat Tpt.

Tn. Klx. Hns.

Vo.

El. Guit.

D. Set

El. B.

El. Guit.

El. Pno.

Guit.

Guit.

El. Guit.

S.

Cch.

Musical score for page 5, measures 11-13. The score is written for a large ensemble, including B \flat Tpt., Tn. Klx. Hns., Vo., El. Guit., D. Set, El. B., El. Guit., El. Pno., Guit., Guit., El. Guit., S., and Cch. The notation is arranged in a vertical staff format. Measures 11-13 are shown. The D. Set part features a complex rhythmic pattern. The El. B. part features a complex rhythmic pattern. The El. Guit. part features a complex rhythmic pattern. The El. Pno. part features a complex rhythmic pattern. The Guit. part features a complex rhythmic pattern. The El. Guit. part features a complex rhythmic pattern. The S. part features a complex rhythmic pattern. The Cch. part features a complex rhythmic pattern.

14

B \flat Tpt.

Tn. Klx. Hns.

Vo.

El. Guit.

D. Set

El. B.

El. Guit.

El. Pno.

Guit.

Guit.

El. Guit.

S.

Cch.

The musical score for page 14, measures 14-16, features the following parts:

- B \flat Tpt.:** Silent (whole rests).
- Tn. Klx. Hns.:** Silent (whole rests).
- Vo.:** Silent (whole rests).
- El. Guit. (top):** Silent (whole rests).
- D. Set:** Active with eighth-note patterns and rests.
- El. B.:** Active with eighth-note patterns and rests.
- El. Guit. (middle):** Sustained chords (triads) on measures 14 and 15, then silent.
- El. Pno.:** Silent (whole rests).
- Guit. (top):** Silent (whole rests).
- Guit. (bottom):** Active with complex rhythmic patterns and rests.
- El. Guit. (bottom):** Sustained chords (triads) on measures 14 and 15, then silent.
- S.:** Silent (whole rests).
- Cch.:** Silent (whole rests).

17

B \flat Tpt.

Tn. Klx. Hns.

Vo.

El. Guit.

D. Set

El. B.

El. Guit.

El. Pno.

Guit.

Guit.

El. Guit.

S.

Cch.

Musical score for page 17, measures 17-18. The score is arranged in a grand staff with 13 staves. The instruments are: B \flat Tpt., Tn. Klx. Hns., Vo., El. Guit., D. Set, El. B., El. Guit., El. Pno. (left and right hands), Guit., Guit., El. Guit., S., and Cch. (left and right hands). The key signature is one flat (B \flat). The time signature is 4/4. The score shows measures 17 and 18. Measures 17 and 18 are mostly rests for the woodwinds, voice, and electric guitar. The double bass (El. B.) and drums (D. Set) play a rhythmic pattern. The piano (El. Pno.) and guitar (Guit.) play chords. The singer (S.) has a melodic line. The cello (Cch.) is also present.

19

B \flat Tpt.

Tn. Klx. Hns.

Vo.

El. Guit.

D. Set

El. B.

El. Guit.

El. Pno.

Guit.

Guit.

El. Guit.

S.

Cch.

The musical score for page 19, measures 19 and 20, features the following instruments and parts:

- B \flat Tpt.:** Rests in both measures.
- Tn. Klx. Hns.:** Rests in both measures.
- Vo.:** Rests in both measures.
- El. Guit. (first):** Rests in both measures.
- D. Set:** Measures 19 and 20 contain eighth-note patterns with rests.
- El. B.:** Measures 19 and 20 contain eighth-note patterns with rests.
- El. Guit. (second):** Measures 19 and 20 contain chords and eighth-note patterns.
- El. Pno.:** Measures 19 and 20 contain chords and eighth-note patterns.
- Guit. (third):** Rests in both measures.
- Guit. (fourth):** Measures 19 and 20 contain chords and eighth-note patterns.
- El. Guit. (third):** Measures 19 and 20 contain chords and eighth-note patterns.
- S.:** Rests in both measures.
- Cch.:** Rests in both measures.

21

B \flat Tpt.

Tn. Klx. Hns.

Vo.

El. Guit.

D. Set

El. B.

El. Guit.

El. Pno.

Guit.

Guit.

El. Guit.

S.

Cch.

Musical score for page 21, measures 21-22. The score includes staves for B \flat Tpt., Tn. Klx. Hns., Vo., El. Guit., D. Set, El. B., El. Guit., El. Pno., Guit., Guit., El. Guit., S., and Cch. The D. Set and El. B. parts are active in measure 21, while the El. Guit. and El. Pno. parts have complex, multi-measure passages. The El. Pno. part is written in a grand staff (treble and bass clef). The Cch. part is written in a grand staff (treble and bass clef).

23

B \flat Tpt.

Tn. Klx. Hns.

Vo.

El. Guit.

D. Set

El. B.

El. Guit.

El. Pno.

Guit.

Guit.

El. Guit.

S.

The musical score for page 10 begins at measure 23. The instrumentation includes B \flat Trumpet, Tenor Saxophone, Clarinet, Horns, Voice, Electric Guitar, Drums, Electric Bass, Electric Guitar (solo), Electric Piano, Guitar, Guitar (solo), Electric Guitar (solo), and Saxophone. The notation is as follows:

- B \flat Tpt.**: A single measure rest.
- Tn. Klx. Hns.**: A single measure rest.
- Vo.**: A single measure rest.
- El. Guit.**: A single measure rest.
- D. Set**: A drum set part featuring a series of eighth and sixteenth notes, including a snare drum and a cymbal.
- El. B.**: An electric bass line with a series of eighth and sixteenth notes, including a snare drum and a cymbal.
- El. Guit.**: An electric guitar solo featuring a series of eighth and sixteenth notes, including a snare drum and a cymbal.
- El. Pno.**: An electric piano part featuring a series of eighth and sixteenth notes, including a snare drum and a cymbal.
- Guit.**: A guitar part featuring a series of eighth and sixteenth notes, including a snare drum and a cymbal.
- Guit.**: A guitar part featuring a series of eighth and sixteenth notes, including a snare drum and a cymbal.
- El. Guit.**: An electric guitar solo featuring a series of eighth and sixteenth notes, including a snare drum and a cymbal.
- S.**: A saxophone part featuring a series of eighth and sixteenth notes, including a snare drum and a cymbal.

24

B \flat Tpt.

Tn. Klx. Hns.

Vo.

El. Guit.

D. Set

El. B.

El. Guit.

El. Pno.

Guit.

Guit.

El. Guit.

S.

Cch.

24

B \flat Tpt.

Tn. Klx. Hns.

Vo.

El. Guit.

D. Set

El. B.

El. Guit.

El. Pno.

Guit.

Guit.

El. Guit.

S.

Cch.

The musical score for page 26 is arranged in a multi-staff format. The instruments and their parts are as follows:

- B \flat Tpt.:** Three measures of whole rests.
- Tn. Klx. Hns.:** First measure contains eighth notes (G4, A4, B4, C5) and quarter notes (D5, C5); the next two measures contain whole rests.
- Vo.:** First measure is a whole rest; the second measure contains a half note chord (F4, A4, C5) tied to a half note chord (F4, A4, C5) in the third measure.
- El. Guit. (first):** Three measures of whole rests.
- D. Set:** A continuous rhythmic pattern of eighth and quarter notes with 'x' marks above some notes, indicating a specific articulation.
- El. B.:** A melodic line in the bass clef, primarily consisting of eighth and quarter notes.
- El. Guit. (second):** A series of chords and single notes, mostly in the lower register.
- El. Pno.:** A grand staff (treble and bass clef) with a complex accompaniment of chords and moving lines.
- Guit. (first):** First measure contains eighth notes (G4, A4, B4, C5); the next two measures contain whole rests.
- Guit. (second):** A series of chords and single notes, mostly in the lower register.
- El. Guit. (third):** A series of chords and single notes, mostly in the lower register.
- S.:** Three measures of whole rests.
- Cch.:** Three measures of whole rests.

29

B \flat Tpt.

Tn. Klx. Hns.

Vo.

El. Guit.

D. Set

El. B.

El. Guit.

El. Pno.

Guit.

Guit.

El. Guit.

S.

Cch.

Pdf downloaded from www.midicities.com

34

Bb Tpt.

Tn. Klx. Hns.

Vo.

El. Guit.

D. Set

El. B.

El. Guit.

El. Pno.

Guit.

Guit.

El. Guit.

S.

Con.

Downloaded from www.midicities.com

35

B \flat Tpt.

Tn. Klx. Hns.

Vo.

El. Guit.

D. Set

El. B.

El. Guit.

El. Pno.

Guit.

Guit.

El. Guit.

S.

Cch.

36

B \flat Tpt.

Tn. Klx. Hns.

Vo.

El. Guit.

D. Set

El. B.

El. Guit.

El. Pno.

Guit.

Guit.

El. Guit.

S.

Ch.

36

Pdf downloaded from www.midicities.com

38

B \flat Tpt.

Tn. Klx. Hns.

Vo.

El. Guit.

D. Set

El. B.

El. Guit.

El. Pno.

Guit.

Guit.

El. Guit.

S.

Cch.

39

Bb Tpt.

Klx. Hns.

Vo.

El. Guit.

D. Set

El. B.

El. Guit.

El. Pno.

Guit.

Guit.

El. Guit.

S.

Cch

aded from www.midicities.com

40

B \flat Tpt.

Tn. Klx. Hns.

Vo.

El. Guit.

D. Set

El. B.

El. Guit.

El. Pno.

Guit.

Guit.

El. Guit.

S.

Cch.

42

B \flat Tpt.

Tn. Klx. Hns.

Vo.

El. Guit.

D. Set

El. B.

El. Guit.

El. Pno.

Guit.

Guit.

El. Guit.

S.

Cch.

42 43 44

45

B \flat Tpt.

Tn. Klx. Hns.

Vo.

El. Guit.

D. Set

El. B.

El. Guit.

El. Pno.

Guit.

Guit.

El. Guit.

S.

Cch.

47

B \flat Tpt.

Klx. Hns.

Vo.

El. Guit.

D. Set

El. B.

El. Guit.

El. Pno.

Guit.

Guit.

El. Guit.

S.

Cch.

loaded from www.midicities.com

48

B \flat Tpt.

Tn. Klx. Hns.

Vo.

El. Guit.

D. Set

El. B.

El. Guit.

El. Pno.

Guit.

Guit.

El. Guit.

S.

Cch.

The musical score for page 25, starting at measure 48, features the following parts and their activity:

- B \flat Tpt.:** Rests in both measures.
- Tn. Klx. Hns.:** Rests in both measures.
- Vo.:** Rests in both measures.
- El. Guit. (first):** Rests in both measures.
- D. Set:** Active in both measures, playing a rhythmic pattern of eighth and sixteenth notes.
- El. B.:** Active in both measures, playing a melodic line with eighth and sixteenth notes.
- El. Guit. (second):** Active in both measures, playing a rhythmic pattern of eighth and sixteenth notes.
- El. Pno.:** Active in both measures, playing a melodic line with eighth and sixteenth notes.
- Guit. (first):** Active in both measures, playing a melodic line with eighth and sixteenth notes.
- Guit. (second):** Active in both measures, playing a melodic line with eighth and sixteenth notes.
- El. Guit. (third):** Active in both measures, playing a rhythmic pattern of eighth and sixteenth notes.
- S.:** Rests in both measures.
- Cch.:** Rests in both measures.

50

B \flat Tpt.

Tn. Klx. Hns.

Vo.

El. Guit.

D. Set

El. B.

El. Guit.

El. Pno.

Guit.

Guit.

El. Guit.

S.

Cch.

The musical score for page 50 is arranged in a multi-staff format. The instruments and their parts are as follows:

- B \flat Tpt.**: Two measures of whole rests.
- Tn. Klx. Hns.**: Two measures of whole rests.
- Vo.**: Two measures of whole rests.
- El. Guit.**: Two measures of whole rests.
- D. Set**: Two measures of a rhythmic pattern consisting of eighth and sixteenth notes.
- El. B.**: Two measures of a bass line with eighth and sixteenth notes.
- El. Guit.**: Two measures of a guitar part with chords and eighth notes.
- El. Pno.**: Two measures of a piano part with chords and eighth notes.
- Guit.**: Two measures of a guitar part with chords and eighth notes.
- Guit.**: Two measures of a guitar part with chords and eighth notes.
- El. Guit.**: Two measures of a guitar part with chords and eighth notes.
- S.**: Two measures of a vocal line with eighth and sixteenth notes.
- Cch.**: Two measures of whole rests.

52

B \flat Tpt.

Tn. Klx. Hns.

Vo.

El. Guit.

D. Set

El. B.

El. Guit.

El. Pno.

Guit.

Guit.

El. Guit.

S.

Cch.

52

B \flat Tpt.

Tn. Klx. Hns.

Vo.

El. Guit.

D. Set

El. B.

El. Guit.

El. Pno.

Guit.

Guit.

El. Guit.

S.

Cch.

54

01

B \flat Tpt.

Klx. Hns.

Vo.

El. Guit.

D. Set

El. B.

El. Guit.

El. Pno.

Guit.

Guit.

El. Guit.

S.

Cch.

aded from www.midicities.com

56

B \flat Tpt.

Tn. Klx. Hns.

Vo.

El. Guit.

D. Set

El. B.

El. Guit.

El. Pno.

Guit.

Guit.

El. Guit.

S.

Cch.

The musical score for page 56 is arranged in a multi-staff format. The instruments and their parts are as follows:

- B \flat Tpt.:** A single staff with a whole rest.
- Tn. Klx. Hns.:** A single staff with a whole rest.
- Vo.:** A single staff with a whole rest.
- El. Guit. (top):** A single staff with a whole rest.
- D. Set:** A single staff with a key signature of one sharp (F#) and a 2/4 time signature. It features a rhythmic pattern of eighth and sixteenth notes.
- El. B.:** A single staff with a key signature of one sharp (F#) and a 2/4 time signature. It features a rhythmic pattern of eighth and sixteenth notes.
- El. Guit. (middle):** A single staff with a key signature of one sharp (F#) and a 2/4 time signature. It features a complex, fast-paced melodic line with many sixteenth notes.
- El. Pno.:** A grand staff (treble and bass clefs) with a key signature of one sharp (F#) and a 2/4 time signature. It features a complex, fast-paced melodic line with many sixteenth notes.
- Guit. (top):** A single staff with a whole rest.
- Guit. (middle):** A single staff with a key signature of one sharp (F#) and a 2/4 time signature. It features a complex, fast-paced melodic line with many sixteenth notes.
- El. Guit. (bottom):** A single staff with a key signature of one sharp (F#) and a 2/4 time signature. It features a complex, fast-paced melodic line with many sixteenth notes.
- S.:** A single staff with a whole rest.
- Cch.:** A single staff with a whole rest.

57

B♭ Tpt.

Klx. Hns.

Vo.

El. Guit.

D. Set

El. B.

El. Guit.

El. Pno.

Guit.

Guit.

El. Guit.

S.

aded from www.midicities.com

58

B \flat Tpt.

Tn. Klx. Hns.

Vo.

El. Guit.

D. Set

El. B.

El. Guit.

El. Pno.

Guit.

Guit.

El. Guit.

S.

Con.

60

B \flat Tpt.

Tn. Klx. Hns.

Vo.

El. Guit.

D. Set

El. B.

El. Guit.

El. Pno.

Guit.

Guit.

El. Guit.

S.

Cch.

62

B \flat Tpt.

Tn. Klx. Hns.

Vo.

El. Guit.

D. Set

El. B.

El. Guit.

El. Pno.

Guit.

Guit.

El. Guit.

S.

Cch.

65

B \flat Tpt.

Tn. Klx. Hns.

Vo.

El. Guit.

D. Set

El. B.

El. Guit.

El. Pno.

Guit.

Guit.

El. Guit.

S.

Cch.

The musical score for page 65 is arranged in a multi-staff format. The instruments and their parts are as follows:

- B \flat Tpt.:** Two staves, both containing whole rests for the duration of the measure.
- Tn. Klx. Hns.:** Two staves, both containing whole rests.
- Vo.:** A single staff with a vocal line. It begins with a long note, followed by a series of eighth and sixteenth notes, and ends with a final chord.
- El. Guit.:** Two staves, both containing whole rests.
- D. Set:** A single staff with a drum set part, featuring a mix of eighth and sixteenth notes with 'x' marks indicating cymbal hits.
- El. B.:** A single staff with an electric bass line, consisting of eighth and sixteenth notes.
- El. Guit.:** A single staff with an electric guitar part, featuring a series of chords and single notes.
- El. Pno.:** A grand staff (treble and bass clefs) with a piano part. The right hand plays a melodic line, while the left hand provides harmonic support with chords and single notes.
- Guit.:** Two staves, both containing whole rests.
- Guit.:** A single staff with a guitar part, featuring a series of chords and single notes.
- El. Guit.:** A single staff with an electric guitar part, featuring a series of chords and single notes.
- S.:** A single staff with a string section part, containing whole rests.
- Cch.:** A grand staff (treble and bass clefs) with a cello part, containing whole rests.

67

Bb Tpt.

Tn. Klx. Hns.

Vo.

El. Guit.

D. Set

El. B.

El. Guit.

El. Pno.

Guit.

Guit.

El. Guit.

S.

El. Guit.

Downloaded from www.midicities.com

69

B \flat Tpt.

Tn. Klx. Hns.

Vo.

El. Guit.

D. Set

El. B.

El. Guit.

El. Pno.

Guit.

Guit.

El. Guit.

S.

Cch.

70

B \flat Tpt.

Tn. Klx. Hns.

Vo.

El. Guit.

D. Set

El. B.

El. Guit.

El. Pno.

Guit.

Guit.

El. Guit.

S.

Ch.

The musical score for page 37, starting at measure 70, is arranged for a large ensemble. The instruments and their parts are as follows:

- B \flat Tpt.:** Features a melodic line with slurs and ties, including a triplet of eighth notes.
- Tn. Klx. Hns.:** A single staff with a whole rest.
- Vo.:** A single staff with a whole rest.
- El. Guit.:** A single staff with a whole rest.
- D. Set:** Features a complex rhythmic pattern with many eighth and sixteenth notes, including a triplet.
- El. B.:** Features a melodic line with slurs and ties.
- El. Guit.:** Features a melodic line with slurs and ties.
- El. Pno.:** Features a complex rhythmic pattern with many eighth and sixteenth notes, including a triplet.
- Guit.:** A single staff with a whole rest.
- Guit.:** Features a complex rhythmic pattern with many eighth and sixteenth notes, including a triplet.
- El. Guit.:** Features a melodic line with slurs and ties.
- S.:** A single staff with a whole rest.
- Ch.:** Features a complex rhythmic pattern with many eighth and sixteenth notes, including a triplet.

71

B \flat Tpt.

Tn. Klx. Hns.

Vo.

El. Guit.

D. Set

El. B.

El. Guit.

El. Pno.

Guit.

Guit.

El. Guit.

S.

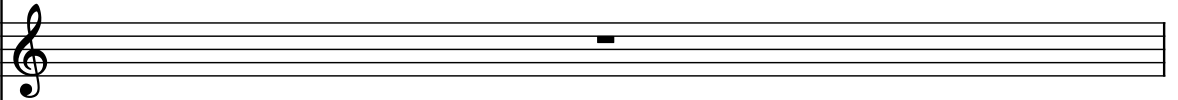
Cch.

72


B \flat Tpt.

Musical notation for B \flat Tpt. staff 72. The staff contains a series of notes and rests, including a half note, a quarter note, and a half note, with some notes beamed together.

Tn. Klx. Hns.

Musical notation for Tn. Klx. Hns. staff 72. The staff contains a whole rest.

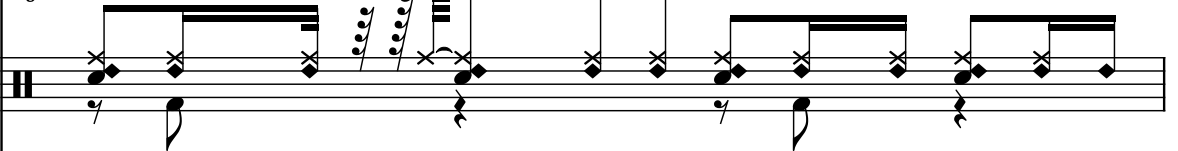
Vo.

Musical notation for Vo. staff 72. The staff contains a whole rest.

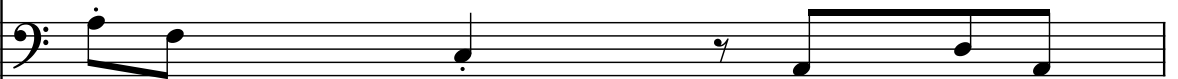
El. Guit.

Musical notation for El. Guit. staff 72. The staff contains a whole rest.

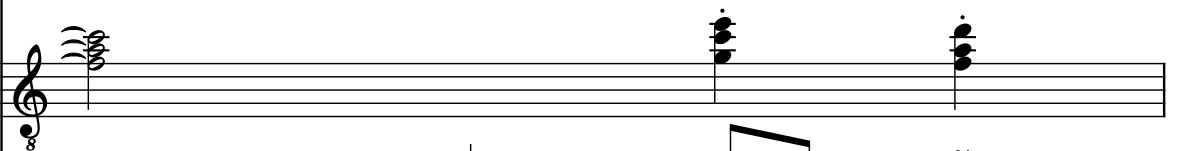
D. Set

Musical notation for D. Set staff 72. The staff contains a series of notes and rests, including a half note, a quarter note, and a half note, with some notes beamed together.

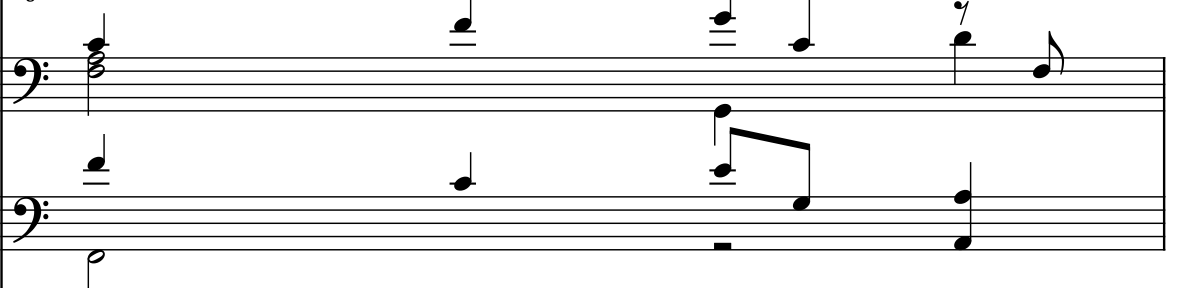
El. B.

Musical notation for El. B. staff 72. The staff contains a series of notes and rests, including a half note, a quarter note, and a half note, with some notes beamed together.

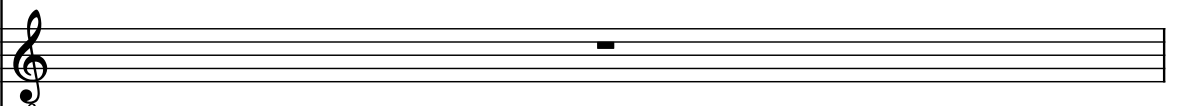
El. Guit.

Musical notation for El. Guit. staff 72. The staff contains a series of notes and rests, including a half note, a quarter note, and a half note, with some notes beamed together.


El. Pno.

Musical notation for El. Pno. staff 72. The staff contains a series of notes and rests, including a half note, a quarter note, and a half note, with some notes beamed together.

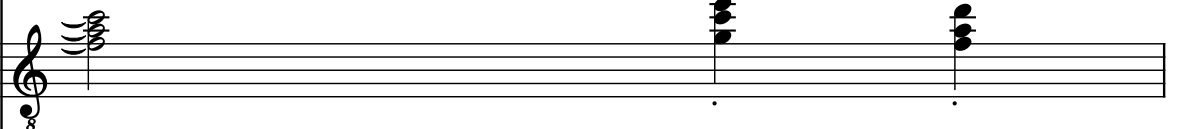
Guit.

Musical notation for Guit. staff 72. The staff contains a whole rest.

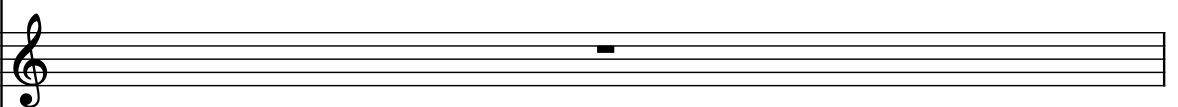
Guit.

Musical notation for Guit. staff 72. The staff contains a series of notes and rests, including a half note, a quarter note, and a half note, with some notes beamed together.

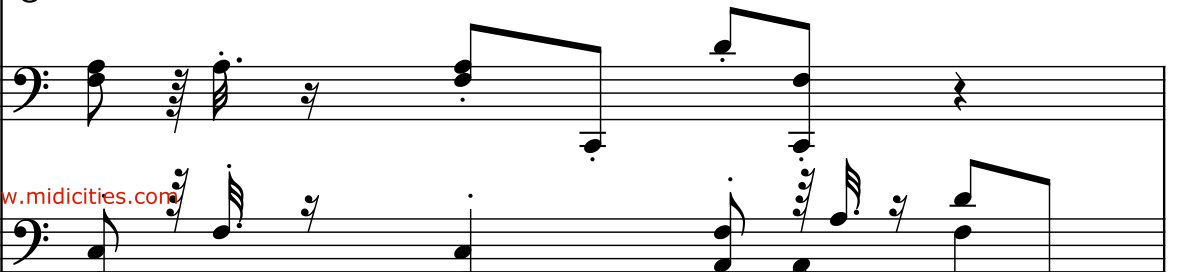
El. Guit.

Musical notation for El. Guit. staff 72. The staff contains a series of notes and rests, including a half note, a quarter note, and a half note, with some notes beamed together.

S.

Musical notation for S. staff 72. The staff contains a whole rest.

Cch.

Musical notation for Cch. staff 72. The staff contains a series of notes and rests, including a half note, a quarter note, and a half note, with some notes beamed together.

73

B \flat Tpt.

Tn. Klx. Hns.

Vo.

El. Guit.

D. Set

El. B.

El. Guit.

El. Pno.

Guit.

Guit.

El. Guit.

S.

Cch.

The musical score for page 40 begins at measure 73. The B \flat Trumpet part starts with a sharp key signature change to one sharp (F#) and plays a series of chords and single notes. The Tenor Saxophone, Horns, and Voice parts are mostly silent, indicated by whole rests. The Electric Guitar part features a complex rhythmic pattern with eighth and sixteenth notes, including a triplet marked with a '3'. The Double Bass part plays a steady eighth-note pattern. The Electric Bass part has a melodic line with a triplet. The Electric Piano part has a melodic line with a triplet. The Acoustic Guitar part has a melodic line with a triplet. The Electric Guitar part has a melodic line with a triplet. The Saxophone part has a melodic line with a triplet. The Cello/Double Bass part has a melodic line with a triplet.

74

B \flat Tpt.

Tn. Klx. Hns.

Vo.

El. Guit.

D. Set

El. B.

El. Guit.

El. Pno.

Guit.

Guit.

El. Guit.

S.

Col.

75

B \flat Tpt.

Tn. Klx. Hns.

Vo.

El. Guit.

D. Set

El. B.

El. Guit.

El. Pno.

Guit.

Guit.

El. Guit.

S.

Cch.

76

B \flat Tpt.

Tn. Klx. Hns.

Vo.

El. Guit.

D. Set

El. B.

El. Guit.

El. Pno.

Guit.

Guit.

El. Guit.

S.

Cch.

76

B \flat Tpt.

Tn. Klx. Hns.

Vo.

El. Guit.

D. Set

El. B.

El. Guit.

El. Pno.

Guit.

Guit.

El. Guit.

S.

Cch.

78

B \flat Tpt.

Tn. Klx. Hns.

Vo.

El. Guit.

D. Set

El. B.

El. Guit.

El. Pno.

Guit.

Guit.

El. Guit.

S.

Ch.

80

B \flat Tpt.

Tn. Klx. Hns.

Vo.

El. Guit.

D. Set

El. B.

El. Guit.

El. Pno.

Guit.

Guit.

El. Guit.

S.

Cch.

The musical score for page 45, starting at measure 80, is arranged for a large ensemble. The staves are as follows:

- B \flat Tpt.**: Silent.
- Tn. Klx. Hns.**: Silent.
- Vo.**: Silent.
- El. Guit.**: Active with a complex, melodic line in the treble clef, featuring many beamed sixteenth and thirty-second notes.
- D. Set**: Active with a rhythmic pattern in the bass clef, featuring eighth and sixteenth notes.
- El. B.**: Active with a melodic line in the bass clef, featuring eighth and sixteenth notes.
- El. Guit.**: Silent.
- El. Pno.**: Silent.
- Guit.**: Silent.
- Guit.**: Silent.
- El. Guit.**: Silent.
- S.**: Silent.
- Cch.**: Active with a melodic line in the bass clef, featuring eighth and sixteenth notes.

82

83

B \flat Tpt.

Tn. Klx. Hns.

Vo.

El. Guit.

D. Set

El. B.

El. Guit.

El. Pno.

Guit.

Guit.

El. Guit.

S.

Cch.

84

B \flat Tpt.

Tn. Klx. Hns.

Vo.

El. Guit.

D. Set

El. B.

El. Guit.

El. Pno.

Guit.

Guit.

El. Guit.

S.

Cch.

The musical score for page 48, starting at measure 84, is arranged for a large ensemble. The staves from top to bottom are: B \flat Tpt., Tn. Klx. Hns., Vo., El. Guit., D. Set, El. B., El. Guit., El. Pno., Guit., Guit., El. Guit., S., and Cch. The B \flat Tpt., Tn. Klx. Hns., Vo., El. Guit., and S. staves contain whole rests. The D. Set staff features a complex rhythmic pattern of eighth and sixteenth notes. The El. B. staff has a melodic line with eighth notes and a half note. The El. Guit. staff has a melodic line with eighth notes and a half note. The El. Pno. staff has a melodic line with eighth notes and a half note. The Guit. staff has a melodic line with eighth notes and a half note. The Cch. staff has a melodic line with eighth notes and a half note.

86

B \flat Tpt.

Tn. Klx. Hns.

Vo.

El. Guit.

D. Set

El. B.

El. Guit.

El. Pno.

Guit.

Guit.

El. Guit.

S.

Cch.

86

B \flat Tpt.

Tn. Klx. Hns.

Vo.

El. Guit.

D. Set

El. B.

El. Guit.

El. Pno.

Guit.

Guit.

El. Guit.

S.

Cch.

Pdf downloaded from www.midicities.com

88

B \flat Tpt.

Tn. Klx. Hns.

Vo.

El. Guit.

D. Set

El. B.

El. Guit.

El. Pno.

Guit.

Guit.

El. Guit.

S.

Cch.

88

B \flat Tpt.

Tn. Klx. Hns.

Vo.

El. Guit.

D. Set

El. B.

El. Guit.

El. Pno.

Guit.

Guit.

El. Guit.

S.

Cch.

89

Bb Tpt.

Tn. Klx. Hns.

Vo.

El. Guit.

D. Set

El. B.

El. Guit.

El. Pno.

Guit.

Guit.

El. Guit.

S.

Cch.

Downloaded from www.midcities.com

90

B \flat Tpt.

Tn. Klx. Hns.

Vo.

El. Guit.

D. Set

El. B.

El. Guit.

El. Pno.

Guit.

Guit.

El. Guit.

S.

Cch.

91

Bb Tpt.

Tn. Klx. Hns.

Vo.

El. Guit.

D. Set

El. B.

El. Guit.

El. Pno.

Guit.

Guit.

El. Guit.

S.

Cch.

Downloaded from www.midcities.com

92

B \flat Tpt.

Tn. Klx. Hns.

Vo.

El. Guit.

D. Set

El. B.

El. Guit.

El. Pno.

Guit.

Guit.

El. Guit.

S.

Cch.

The musical score for page 55, measures 92-94, is presented in a multi-staff format. The instruments and their parts are as follows:

- B \flat Tpt.:** Measures 92-94 show a melodic line with notes and rests.
- Tn. Klx. Hns.:** Measures 92-94 show a melodic line with notes and rests.
- Vo.:** Measures 92-94 show a melodic line with notes and rests.
- El. Guit.:** Measures 92-94 show a melodic line with notes and rests.
- D. Set:** Measures 92-94 show a complex rhythmic pattern with notes and rests.
- El. B.:** Measures 92-94 show a melodic line with notes and rests.
- El. Guit.:** Measures 92-94 show a melodic line with notes and rests.
- El. Pno.:** Measures 92-94 show a melodic line with notes and rests.
- Guit.:** Measures 92-94 show a melodic line with notes and rests.
- Guit.:** Measures 92-94 show a melodic line with notes and rests.
- El. Guit.:** Measures 92-94 show a melodic line with notes and rests.
- S.:** Measures 92-94 show a melodic line with notes and rests.
- Cch.:** Measures 92-94 show a melodic line with notes and rests.

93

Bb Tpt.

Klx. Hns.

Vo.

El. Guit.

D. Set

El. B.

El. Guit.

El. Pno.

Guit.

Guit.

El. Guit.

S.

Cch.

aded from www.midcities.com

94

B \flat Tpt.

Tn. Klx. Hns.

Vo.

El. Guit.

D. Set

El. B.

El. Guit.

El. Pno.

Guit.

Guit.

El. Guit.

S.

Cch.

Musical score for page 57, measures 94-97. The score is written for a 4/4 time signature. The instruments and parts are:

- B \flat Tpt. (B-flat Trumpet): Measures 94-97.
- Tn. Klx. Hns. (Trombone, Clarinet, Horns): Measures 94-97.
- Vo. (Vocal): Measures 94-97.
- El. Guit. (Electric Guitar): Measures 94-97.
- D. Set (Drum Set): Measures 94-97.
- El. B. (Electric Bass): Measures 94-97.
- El. Guit. (Electric Guitar): Measures 94-97.
- El. Pno. (Electric Piano): Measures 94-97.
- Guit. (Guitar): Measures 94-97.
- Guit. (Guitar): Measures 94-97.
- El. Guit. (Electric Guitar): Measures 94-97.
- S. (Singer): Measures 94-97.
- Cch. (Cello): Measures 94-97.

The score includes various musical notations such as notes, rests, and dynamic markings. A red watermark "Pdf downloaded from www.midi4all.com" is visible at the bottom left.

95

B \flat Tpt.

Klx. Hns.

Vo.

El. Guit.

D. Set

El. B.

El. Guit.

El. Pno.

Guit.

Guit.

El. Guit.

S.

Cch.

aded from www.mididirect.com

96

B \flat Tpt.

Tn. Klx. Hns.

Vo.

El. Guit.

D. Set

El. B.

El. Guit.

El. Pno.

Guit.

Guit.

El. Guit.

S.

Cch.

96

B \flat Tpt.

Tn. Klx. Hns.

Vo.

El. Guit.

D. Set

El. B.

El. Guit.

El. Pno.

Guit.

Guit.

El. Guit.

S.

Cch.

5

3

97

B \flat Tpt.

Tn. Klx. Hns.

Vo.

El. Guit.

D. Set

El. B.

El. Guit.

El. Pno.

Guit.

Guit.

El. Guit.

S.

Cch.

The musical score for page 60, measures 97-100, is as follows:

- Measure 97:** B \flat Tpt. plays a chord of G \flat 4, B \flat 4, and D5. Tn. Klx. Hns., Vo., and El. Guit. have whole rests. D. Set plays a quarter note G \flat 2, a quarter note A2, and a quarter note B2. El. B. plays a quarter note G \flat 2, a quarter note A2, and a quarter note B2. El. Guit. plays a quarter note G \flat 4, a quarter note B \flat 4, and a quarter note D5. El. Pno. plays a quarter note G \flat 2, a quarter note A2, and a quarter note B2. Guit. has a whole rest. Guit. plays a quarter note G \flat 4, a quarter note B \flat 4, and a quarter note D5. El. Guit. plays a quarter note G \flat 4, a quarter note B \flat 4, and a quarter note D5. S. has a whole rest. Cch. plays a quarter note G \flat 2, a quarter note A2, and a quarter note B2.
- Measure 98:** B \flat Tpt. plays a chord of G \flat 4, B \flat 4, and D5. Tn. Klx. Hns., Vo., and El. Guit. have whole rests. D. Set plays a quarter note G \flat 2, a quarter note A2, and a quarter note B2. El. B. plays a quarter note G \flat 2, a quarter note A2, and a quarter note B2. El. Guit. plays a quarter note G \flat 4, a quarter note B \flat 4, and a quarter note D5. El. Pno. plays a quarter note G \flat 2, a quarter note A2, and a quarter note B2. Guit. has a whole rest. Guit. plays a quarter note G \flat 4, a quarter note B \flat 4, and a quarter note D5. El. Guit. plays a quarter note G \flat 4, a quarter note B \flat 4, and a quarter note D5. S. has a whole rest. Cch. plays a quarter note G \flat 2, a quarter note A2, and a quarter note B2.
- Measure 99:** B \flat Tpt. plays a chord of G \flat 4, B \flat 4, and D5. Tn. Klx. Hns., Vo., and El. Guit. have whole rests. D. Set plays a quarter note G \flat 2, a quarter note A2, and a quarter note B2. El. B. plays a quarter note G \flat 2, a quarter note A2, and a quarter note B2. El. Guit. plays a quarter note G \flat 4, a quarter note B \flat 4, and a quarter note D5. El. Pno. plays a quarter note G \flat 2, a quarter note A2, and a quarter note B2. Guit. has a whole rest. Guit. plays a quarter note G \flat 4, a quarter note B \flat 4, and a quarter note D5. El. Guit. plays a quarter note G \flat 4, a quarter note B \flat 4, and a quarter note D5. S. has a whole rest. Cch. plays a quarter note G \flat 2, a quarter note A2, and a quarter note B2.
- Measure 100:** B \flat Tpt. plays a chord of G \flat 4, B \flat 4, and D5. Tn. Klx. Hns., Vo., and El. Guit. have whole rests. D. Set plays a quarter note G \flat 2, a quarter note A2, and a quarter note B2. El. B. plays a quarter note G \flat 2, a quarter note A2, and a quarter note B2. El. Guit. plays a quarter note G \flat 4, a quarter note B \flat 4, and a quarter note D5. El. Pno. plays a quarter note G \flat 2, a quarter note A2, and a quarter note B2. Guit. has a whole rest. Guit. plays a quarter note G \flat 4, a quarter note B \flat 4, and a quarter note D5. El. Guit. plays a quarter note G \flat 4, a quarter note B \flat 4, and a quarter note D5. S. has a whole rest. Cch. plays a quarter note G \flat 2, a quarter note A2, and a quarter note B2.

98

B♭ T_{pt.}

Tn. Klx. Hns.

Vo.

El. Guit.

D. Set

El. B.

El. Guit.

El. Pno.

Guit.

Guit.

El. Guit.

S.

Cch.

99

B \flat Tpt.

Tn. Klx. Hns.

Vo.

El. Guit.

D. Set

El. B.

El. Guit.

El. Pno.

Guit.

Guit.

El. Guit.

S.

Cch.

The musical score for page 99 is arranged in a multi-staff format. The instruments and their parts are as follows:

- B \flat Tpt.**: Starts with a whole rest, followed by a half note G \sharp 4, a quarter note A \sharp 4, and a quarter note B \sharp 4.
- Tn. Klx. Hns.**: Whole rest.
- Vo.**: Whole rest.
- El. Guit.**: Whole rest.
- D. Set**: A series of eighth notes with a 'x' above each, indicating a specific technique or effect.
- El. B.**: A half note G \sharp 2, followed by a half note A \sharp 2, and a half note B \sharp 2.
- El. Guit.**: A half note G \sharp 4, followed by a half note A \sharp 4, and a half note B \sharp 4.
- El. Pno.**: A half note G \sharp 4, followed by a half note A \sharp 4, and a half note B \sharp 4.
- Guit.**: Whole rest.
- Guit.**: A half note G \sharp 4, followed by a half note A \sharp 4, and a half note B \sharp 4.
- El. Guit.**: A half note G \sharp 4, followed by a half note A \sharp 4, and a half note B \sharp 4.
- S.**: Whole rest.
- Cch.**: A half note G \sharp 2, followed by a half note A \sharp 2, and a half note B \sharp 2.

100

B \flat Tpt.

Tn. Klx. Hns.

Vo.

El. Guit.

D. Set

El. B.

El. Guit.

El. Pno.

Guit.

Guit.

El. Guit.

S.

Cch.

100 101 102 103 104

101

Bb Tpt.

Tn. Klx. Hns.

Vo.

El. Guit.

8

D. Set

El. B.

El. Guit.

8

El. Pno.

3

Guit.

8

Guit.

8

El. Guit.

8

S.

Ceb

Downloaded from www.midcities.com

102

B♭ Tpt.

Tn. Klx. Hns.

Vo.

El. Guit.

D. Set

El. B.

El. Guit.

El. Pno.

Guit.

Guit.

El. Guit.

S.

Cch.

Downloaded from www.tridicities.com

103

B \flat Tpt.

Tn. Klx. Hns.

Vo.

El. Guit.

D. Set

El. B.

El. Guit.

El. Pno.

Guit.

Guit.

El. Guit.

S.

Cch.

104

B \flat Tpt.

Tn. Klx. Hns.

Vo.

El. Guit.

D. Set

El. B.

El. Guit.

El. Pno.

Guit.

Guit.

El. Guit.

S.

Cch.

Downloaded from www.midiarchives.com

from v

106

B \flat Tpt.

Tn. Klx. Hns.

Vo.

El. Guit.

D. Set

El. B.

El. Guit.

El. Pno.

Guit.

Guit.

El. Guit.

S.

Cen.

The musical score for page 106 is arranged in a multi-staff format. The instruments and their parts are as follows:

- B \flat Tpt.**: A single staff with a whole rest.
- Tn. Klx. Hns.**: A single staff with a whole rest.
- Vo.**: A single staff with a whole rest.
- El. Guit.**: A single staff with a whole rest.
- D. Set**: A single staff with a complex rhythmic pattern of eighth and sixteenth notes, including a triplet.
- El. B.**: A single staff with a complex rhythmic pattern of eighth and sixteenth notes, including a triplet.
- El. Guit.**: A single staff with a complex rhythmic pattern of eighth and sixteenth notes, including a triplet.
- El. Pno.**: A grand staff (treble and bass clefs) with a complex rhythmic pattern of eighth and sixteenth notes, including a triplet.
- Guit.**: A single staff with a complex rhythmic pattern of eighth and sixteenth notes, including a triplet.
- Guit.**: A single staff with a complex rhythmic pattern of eighth and sixteenth notes, including a triplet.
- El. Guit.**: A single staff with a complex rhythmic pattern of eighth and sixteenth notes, including a triplet.
- S.**: A single staff with a complex rhythmic pattern of eighth and sixteenth notes, including a triplet.
- Cen.**: A single staff with a complex rhythmic pattern of eighth and sixteenth notes, including a triplet.