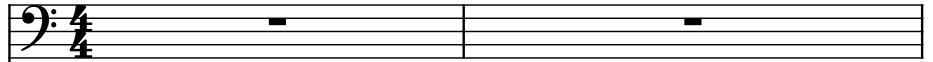


♩ = 128

Fretless Electric Bass, MIDI out #1



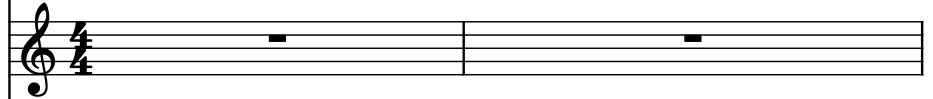
Bass Recorder, MIDI out #2



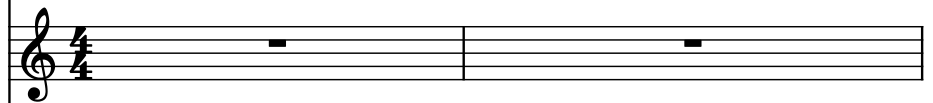
Acoustic Guitar, MIDI out #3



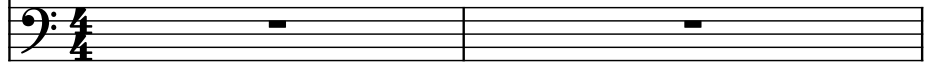
Saw Synthesizer, MIDI out #4



Oboe, MIDI out #5

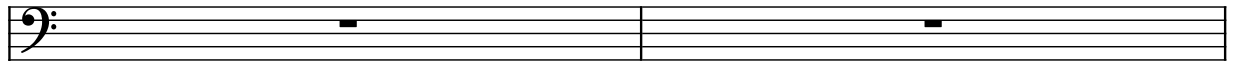


Square Synthesizer, MIDI out #6



3

Frtl. El. B.



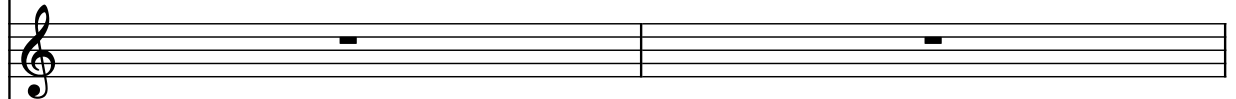
B. Rec.



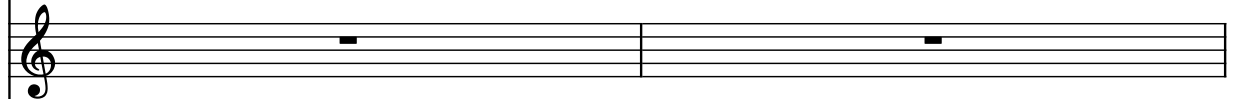
Guit.



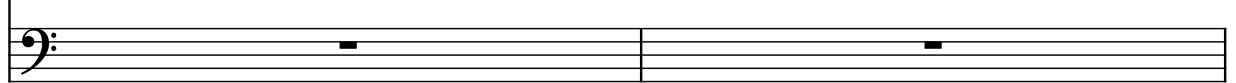
Synth.



Ob.



Synth.



B. Rec.

Guit.

Synth.

Ob.

Synth.

Frtl. El. B.

B. Rec.

Guit.

Synth.

Ob.

Synth.

9

Frtrl. El. B.

B. Rec.

Guit.

Synth.

Ob.

Synth.

11

Frtrl. El. B.

B. Rec.

Guit.

Synth.

Ob.

Synth.

13

Frtrl. El. B.

B. Rec.

Guit.

Synth.

Ob.

Synth.

15

Frtrl. El. B.

B. Rec.

Guit.

Synth.

Ob.

Synth.

21

Pdf downloaded from www.midicities.com

24

Frtrl. El. B.

B. Rec.

Guit.

Synth.

Ob.

Synth.

26

Frtrl. El. B.

B. Rec.

Guit.

Synth.

Ob.

Synth.

28

Frtrl. El. B.

B. Rec.

Guit.

Synth.

Ob.

Synth.

30

Frtrl. El. B.

B. Rec.

Guit.

Synth.

Ob.

Synth.

32

Frtrl. El. B.

B. Rec.

Guit.

Synth.

Ob.

Synth.

Frtrl. El. B.

B. Rec.

Guit.

Synth.

Ob.

Synth.

34

Frtrl. El. B.

B. Rec.

Guit.

Synth.

Ob.

Synth.

Frtrl. El. B.

B. Rec.

Guit.

Synth.

Ob.

Synth.

36

Frtrl. El. B.

B. Rec.

Guit.

Synth.

Ob.

Synth.



38

Frtrl. El. B.

B. Rec.

Guit.

Synth.

Ob.

Synth.



40

Frtrl. El. B.

B. Rec.

Guit.

Synth.

Ob.

Synth.

42

Frtrl. El. B.

B. Rec.

Guit.

Synth.

Ob.

Synth.

44

Frtrl. El. B.

B. Rec.

Guit.

Synth.

Ob.

Synth.

Measure 44: Frtrl. El. B. (Bass) has a half note G#2, quarter note A2, quarter note B2, half note C#3, quarter note D3, quarter note E3, half note F#3, quarter note G3. B. Rec. (Bass) has eighth notes G#2, A2, B2, C#3, D3, E3, F#3, G3. Guit. (Treble) has a whole rest. Synth. (Treble) has a half note G#2, quarter note A2, quarter note B2, half note C#3, quarter note D3, quarter note E3, half note F#3, quarter note G3. Ob. (Treble) has a whole rest. Synth. (Bass) has a whole rest.

Measure 45: Frtrl. El. B. (Bass) has a half note G#2, quarter note A2, quarter note B2, half note C#3, quarter note D3, quarter note E3, half note F#3, quarter note G3. B. Rec. (Bass) has eighth notes G#2, A2, B2, C#3, D3, E3, F#3, G3. Guit. (Treble) has a whole rest. Synth. (Treble) has a half note G#2, quarter note A2, quarter note B2, half note C#3, quarter note D3, quarter note E3, half note F#3, quarter note G3. Ob. (Treble) has a whole rest. Synth. (Bass) has a whole rest.

46

Frtrl. El. B.

B. Rec.

Guit.

Synth.

Ob.

Synth.

Measure 46: Frtrl. El. B. (Bass) has a half note G#2, quarter note A2, quarter note B2, half note C#3, quarter note D3, quarter note E3, half note F#3, quarter note G3. B. Rec. (Bass) has eighth notes G#2, A2, B2, C#3, D3, E3, F#3, G3. Guit. (Treble) has a whole rest. Synth. (Treble) has a half note G#2, quarter note A2, quarter note B2, half note C#3, quarter note D3, quarter note E3, half note F#3, quarter note G3. Ob. (Treble) has a whole rest. Synth. (Bass) has a whole rest.

Measure 47: Frtrl. El. B. (Bass) has a half note G#2, quarter note A2, quarter note B2, half note C#3, quarter note D3, quarter note E3, half note F#3, quarter note G3. B. Rec. (Bass) has eighth notes G#2, A2, B2, C#3, D3, E3, F#3, G3. Guit. (Treble) has a whole rest. Synth. (Treble) has a half note G#2, quarter note A2, quarter note B2, half note C#3, quarter note D3, quarter note E3, half note F#3, quarter note G3. Ob. (Treble) has a whole rest. Synth. (Bass) has a whole rest.

48

Frtrl. El. B.

B. Rec.

Guit.

Synth.

Ob.

Synth.

Measures 48-53. The Frtrl. El. B. part has a melodic line in the bass clef. The B. Rec. part has a melodic line in the bass clef. The Guit. part has a melodic line in the treble clef. The Synth. part has a melodic line in the treble clef. The Ob. part has a melodic line in the treble clef. The Synth. part has a melodic line in the bass clef.

54

Frtrl. El. B.

B. Rec.

Guit.

Synth.

Ob.

Synth.

Measures 54-59. The Frtrl. El. B. part has a melodic line in the bass clef. The B. Rec. part has a melodic line in the bass clef. The Guit. part has a melodic line in the treble clef. The Synth. part has a melodic line in the treble clef. The Ob. part has a melodic line in the treble clef. The Synth. part has a melodic line in the bass clef.

57

Frtrl. El. B.

B. Rec.

Guit.

Synth.

Ob.

Synth.

Measures 57-59: Frtrl. El. B. (Bass) plays a continuous eighth-note melody. B. Rec. (Bass) is silent. Guit. (Treble) is silent. Synth. (Treble) plays a complex eighth-note melody. Ob. (Treble) is silent. Synth. (Bass) is silent.

60

Frtrl. El. B.

B. Rec.

Guit.

Synth.

Ob.

Synth.

Measures 60-61: Frtrl. El. B. (Bass) plays a continuous eighth-note melody. B. Rec. (Bass) plays a complex eighth-note melody. Guit. (Treble) is silent. Synth. (Treble) plays a complex eighth-note melody. Ob. (Treble) is silent. Synth. (Bass) is silent.

62

Frtrl. El. B.

B. Rec.

Guit.

Synth.

Ob.

Synth.

Frtrl. El. B. staff: Bass clef, key signature of one sharp (F#). Notes: F#4, G4, A4, B4, C5, B4, A4, G4, F#4, E4, D4, C4.

B. Rec. staff: Bass clef, key signature of one sharp (F#). Notes: F#4, G4, A4, B4, C5, B4, A4, G4, F#4, E4, D4, C4.

Guit. staff: Treble clef, key signature of one sharp (F#). Notes: F#4, G4, A4, B4, C5, B4, A4, G4, F#4, E4, D4, C4.

Synth. staff: Treble clef, key signature of one sharp (F#). Notes: F#4, G4, A4, B4, C5, B4, A4, G4, F#4, E4, D4, C4.

Ob. staff: Treble clef, key signature of one sharp (F#). Notes: F#4, G4, A4, B4, C5, B4, A4, G4, F#4, E4, D4, C4.

Synth. staff: Bass clef, key signature of one sharp (F#). Notes: F#4, G4, A4, B4, C5, B4, A4, G4, F#4, E4, D4, C4.

64

Frtrl. El. B.

B. Rec.

Guit.

Synth.

Ob.

Synth.

Frtrl. El. B. staff: Bass clef, key signature of one sharp (F#). Notes: F#4, G4, A4, B4, C5, B4, A4, G4, F#4, E4, D4, C4.

B. Rec. staff: Bass clef, key signature of one sharp (F#). Notes: F#4, G4, A4, B4, C5, B4, A4, G4, F#4, E4, D4, C4.

Guit. staff: Treble clef, key signature of one sharp (F#). Notes: F#4, G4, A4, B4, C5, B4, A4, G4, F#4, E4, D4, C4.

Synth. staff: Treble clef, key signature of one sharp (F#). Notes: F#4, G4, A4, B4, C5, B4, A4, G4, F#4, E4, D4, C4.

Ob. staff: Treble clef, key signature of one sharp (F#). Notes: F#4, G4, A4, B4, C5, B4, A4, G4, F#4, E4, D4, C4.

Synth. staff: Bass clef, key signature of one sharp (F#). Notes: F#4, G4, A4, B4, C5, B4, A4, G4, F#4, E4, D4, C4.

66

Frtrl. El. B.

B. Rec.

Guit.

Synth.

Ob.

Synth.

Detailed description: This system contains measures 66 and 67. The Frtrl. El. B. staff (Bass clef) plays a sequence of eighth notes: F#2, G2, A2, B2, C3, D3, E3, F#3. The B. Rec. staff (Bass clef) plays a sequence of eighth notes: F#2, G2, A2, B2, C3, D3, E3, F#3. The Guit. staff (Treble clef) is silent. The Synth. staff (Treble clef) plays a sequence of eighth notes: F#2, G2, A2, B2, C3, D3, E3, F#3. The Ob. staff (Treble clef) is silent. The bottom Synth. staff (Bass clef) is silent.

68

Frtrl. El. B.

B. Rec.

Guit.

Synth.

Ob.

Synth.

Detailed description: This system contains measures 68 and 69. The Frtrl. El. B. staff (Bass clef) plays a sequence of eighth notes: F#2, G2, A2, B2, C3, D3, E3, F#3. The B. Rec. staff (Bass clef) plays a sequence of eighth notes: F#2, G2, A2, B2, C3, D3, E3, F#3. The Guit. staff (Treble clef) is silent. The Synth. staff (Treble clef) plays a sequence of eighth notes: F#2, G2, A2, B2, C3, D3, E3, F#3. The Ob. staff (Treble clef) is silent. The bottom Synth. staff (Bass clef) is silent in measure 68 and plays a sequence of eighth notes in measure 69: F#2, G2, A2, B2, C3, D3, E3, F#3.

70

Frtrl. El. B.

B. Rec.

Guit.

Synth.

Ob.

Synth.

72

Frtrl. El. B.

B. Rec.

Guit.

Synth.

Ob.

Synth.

74

Frtrl. El. B.

B. Rec.

Guit.

Synth.

Ob.

Synth.

76

Frtrl. El. B.

B. Rec.

Guit.

Synth.

Ob.

Synth.

79

Frtrl. El. B.

B. Rec.

Guit.

Synth.

Ob.

Synth.

83

Frtrl. El. B.

B. Rec.

Guit.

Synth.

Ob.

Synth.

89

Frtrl. El. B.

B. Rec.

Guit.

Synth.

Ob.

Synth.

Frtrl. El. B. staff: Bass clef, key signature of one sharp (F#). Notes: F#4 (quarter), G4 (quarter), A4 (quarter), B4 (quarter), C5 (quarter), B4 (quarter), A4 (quarter), G4 (quarter), F#4 (quarter).

B. Rec. staff: Bass clef, key signature of one sharp (F#). Notes: F#4 (quarter), G4 (quarter), A4 (quarter), B4 (quarter), C5 (quarter), B4 (quarter), A4 (quarter), G4 (quarter), F#4 (quarter).

Guit. staff: Treble clef, key signature of one sharp (F#). Notes: F#4 (quarter), G4 (quarter), A4 (quarter), B4 (quarter), C5 (quarter), B4 (quarter), A4 (quarter), G4 (quarter), F#4 (quarter).

Synth. staff: Treble clef, key signature of one sharp (F#). Notes: F#4 (quarter), G4 (quarter), A4 (quarter), B4 (quarter), C5 (quarter), B4 (quarter), A4 (quarter), G4 (quarter), F#4 (quarter).

Ob. staff: Treble clef, key signature of one sharp (F#). Notes: F#4 (quarter), G4 (quarter), A4 (quarter), B4 (quarter), C5 (quarter), B4 (quarter), A4 (quarter), G4 (quarter), F#4 (quarter).

Synth. staff: Bass clef, key signature of one sharp (F#). Notes: F#4 (quarter), G4 (quarter), A4 (quarter), B4 (quarter), C5 (quarter), B4 (quarter), A4 (quarter), G4 (quarter), F#4 (quarter).

91

Frtrl. El. B.

B. Rec.

Guit.

Synth.

Ob.

Synth.

Frtrl. El. B. staff: Bass clef, key signature of one sharp (F#). Notes: F#4 (quarter), G4 (quarter), A4 (quarter), B4 (quarter), C5 (quarter), B4 (quarter), A4 (quarter), G4 (quarter), F#4 (quarter).

B. Rec. staff: Bass clef, key signature of one sharp (F#). Notes: F#4 (quarter), G4 (quarter), A4 (quarter), B4 (quarter), C5 (quarter), B4 (quarter), A4 (quarter), G4 (quarter), F#4 (quarter).

Guit. staff: Treble clef, key signature of one sharp (F#). Notes: F#4 (quarter), G4 (quarter), A4 (quarter), B4 (quarter), C5 (quarter), B4 (quarter), A4 (quarter), G4 (quarter), F#4 (quarter).

Synth. staff: Treble clef, key signature of one sharp (F#). Notes: F#4 (quarter), G4 (quarter), A4 (quarter), B4 (quarter), C5 (quarter), B4 (quarter), A4 (quarter), G4 (quarter), F#4 (quarter).

Ob. staff: Treble clef, key signature of one sharp (F#). Notes: F#4 (quarter), G4 (quarter), A4 (quarter), B4 (quarter), C5 (quarter), B4 (quarter), A4 (quarter), G4 (quarter), F#4 (quarter).

Synth. staff: Bass clef, key signature of one sharp (F#). Notes: F#4 (quarter), G4 (quarter), A4 (quarter), B4 (quarter), C5 (quarter), B4 (quarter), A4 (quarter), G4 (quarter), F#4 (quarter).

93

Frfl. El. B.

B. Rec.

Guit.

Synth.

Ob.

Synth.



95

Frfl. El. B.

B. Rec.

Guit.

Synth.

Ob.

Synth.



97

Frtrl. El. B.

B. Rec.

Guit.

Synth.

Ob.

Synth.

Measures 97-98. The Frtrl. El. B. staff has whole notes: F#2, G2, A2, B2, C3, D3, E3, F#3. The Synth. (Bass) staff has whole notes: F#2, G2, A2, B2, C3, D3, E3, F#3. The B. Rec. staff has eighth notes: F#2, G2, A2, B2, C3, D3, E3, F#3. The Guit., Synth. (Treble), and Ob. staves have whole rests.

99

Frtrl. El. B.

B. Rec.

Guit.

Synth.

Ob.

Synth.

Measures 99-100. The Frtrl. El. B. staff has whole notes: F#2, G2, A2, B2, C3, D3, E3, F#3. The Synth. (Bass) staff has whole notes: F#2, G2, A2, B2, C3, D3, E3, F#3. The B. Rec. staff has eighth notes: F#2, G2, A2, B2, C3, D3, E3, F#3. The Guit., Synth. (Treble), and Ob. staves have whole rests.

101

Frtrl. El. B.

B. Rec.

Guit.

Synth.

Ob.

Synth.

Frtrl. El. B.

B. Rec.

Guit.

Synth.

Ob.

Synth.

103

Frtrl. El. B.

B. Rec.

Guit.

Synth.

Ob.

Synth.

Frtrl. El. B.

B. Rec.

Guit.

Synth.

Ob.

Synth.