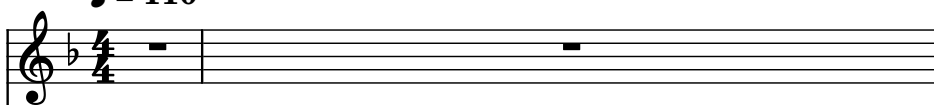
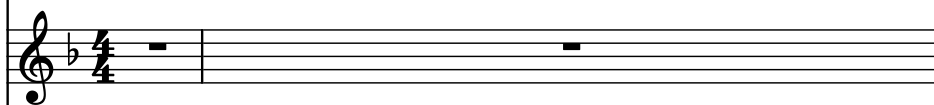


♩ = 110

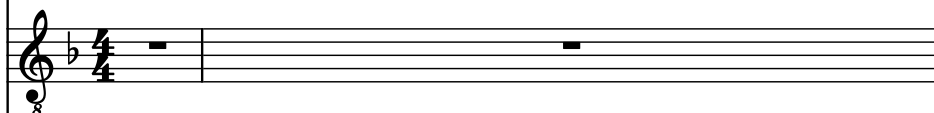
B♭ Trumpet, Trumpet



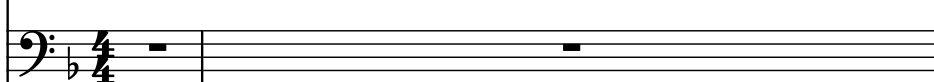
Brass, BrassSect



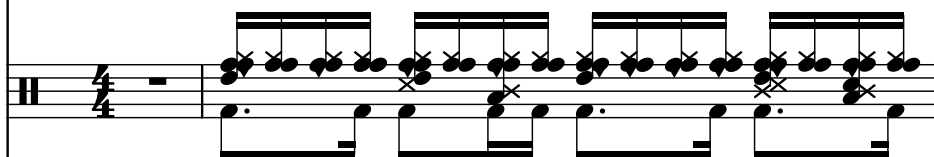
Classical Guitar, GtrNylon



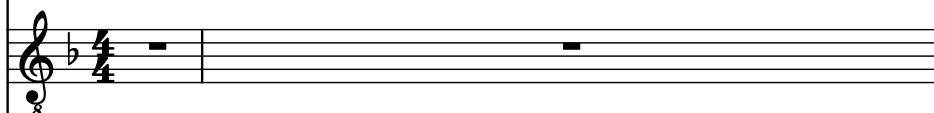
Contrabass, AcouBass



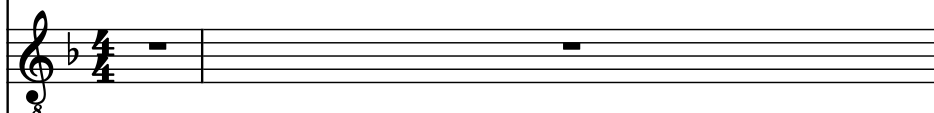
Drumset, Drums



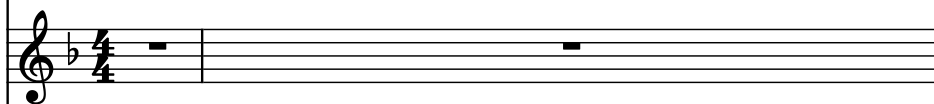
Acoustic Guitar, GtrJazz



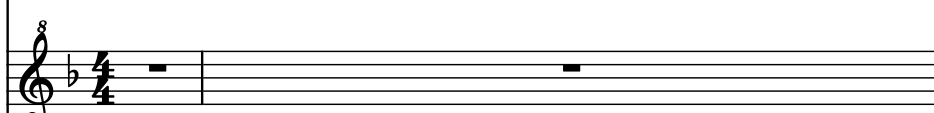
Electric Guitar, GtrClean



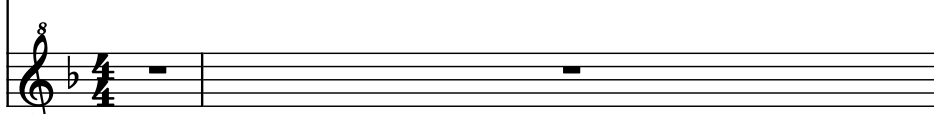
Brass Synthesizer, BrassSy2



C Tin Whistle, Whistle



Orff Alto Glockenspiel, Glocknspl



3

Bb Tpt.

Br.

Guit.

Cb.

D. Set

Guit.

El. Guit.

Synth.

C Tin Wh.

O. A. Glk.

4

Bb Tpt.

Br.

Guit.

Cb.

D. Set

Guit.

El. Guit.

Synth.

C Tin Wh.

O. A. Glk.

5

Bb Tpt.

Br.

Guit.

Cb.

D. Set

Guit.

El. Guit.

Synth.

C Tin Wh.

O. A. Glk.

6

Bb Tpt.

Br.

Guit.

Cb.

D. Set

Guit.

El. Guit.

Synth.

C Tin Wh.

O. A. Glk.

7

Bb Tpt.

Br.

Guit.

Cb.

D. Set

Guit.

El. Guit.

Synth.

C Tin Wh.

O. A. Glk.

8

Bb Tpt.

Br.

Guit.

Cb.

D. Set

Guit.

El. Guit.

Synth.

C Tin Wh.

O. A. Glk.

9

Bb Tpt.

Br.

Guit.

Cb.

D. Set

Guit.

El. Guit.

Synth.

C Tin Wh.

O. A. Glk.

Detailed description: This page shows measures 9 through 12 of a musical score. The score is written for a large ensemble. The first five staves (Bb Tpt., Br., Guit., Cb., and D. Set) contain musical notation for measures 9-12. The Bb Tpt. and Br. parts feature melodic lines with some slurs and ties. The Guit. part has a rhythmic pattern of eighth notes and chords. The Cb. part has a simple bass line. The D. Set part features a complex, syncopated rhythm with many beamed eighth notes. The remaining five staves (Guit., El. Guit., Synth., C Tin Wh., and O. A. Glk.) are empty, indicating that these instruments are silent for this section. The key signature has one flat (Bb), and the time signature is 4/4.

10

Bb Tpt.

Br.

Guit.

Cb.

D. Set

Guit.

El. Guit.

Synth.

C Tin Wh.

O. A. Glk.

11

Bb Tpt.

Br.

Guit.

Cb.

D. Set

Guit.

El. Guit.

Synth.

C Tin Wh.

O. A. Glk.

Detailed description: This musical score page contains measures 11 through 14. The instruments are arranged in a stack from top to bottom: Bb Tpt., Br., Guit., Cb., D. Set, Guit., El. Guit., Synth., C Tin Wh., and O. A. Glk. Measures 11 and 12 show the Bb Tpt. and Br. playing a half note G2, while the Guit. plays a continuous eighth-note pattern. In measure 13, the Cb. plays a half note G1, and the D. Set plays a complex pattern of eighth notes. In measure 14, all instruments have a whole rest. The key signature has one flat (Bb), and the time signature is 4/4.

12

Bb Tpt.

Br.

Guit.

Cb.

D. Set

Guit.

El. Guit.

Synth.

C Tin Wh.

O. A. Glk.

13

Bb Tpt.

Br.

Guit.

Cb.

D. Set

Guit.

El. Guit.

Synth.

C Tin Wh.

O. A. Glk.

Detailed description: This musical score page shows measures 13 through 16. The first five staves are active: Bb Tpt. (B-flat Trumpet) in treble clef with a key signature of one flat, playing a melodic line with a half note, a quarter note, and a half note, followed by a quarter rest and a half note. Br. (Baritone) in treble clef with a key signature of one flat, playing a similar melodic line. Guit. (Guitar) in treble clef with a key signature of one flat, playing a rhythmic pattern of eighth notes and quarter notes. Cb. (Cello) in bass clef with a key signature of one flat, playing a simple bass line. D. Set (Drum Set) in common time, featuring a complex pattern of eighth and sixteenth notes. The remaining five staves (Guit., El. Guit., Synth., C Tin Wh., and O. A. Glk.) are empty, indicating no parts for these instruments in this section.

14

Bb Tpt.

Br.

Guit.

Cb.

D. Set

Guit.

El. Guit.

Synth.

C Tin Wh.

O. A. Glk.

15

B \flat Tpt.

Br.

Guit.

Cb.

D. Set

Guit.

El. Guit.

Synth.

C Tin Wh.

O. A. Glk.

16

Bb Tpt.

Br.

Guit.

Cb.

D. Set

Guit.

El. Guit.

Synth.

C Tin Wh.

O. A. Glk.

17

Bb Tpt.

Br.

Guit.

Cb.

D. Set

Guit.

El. Guit.

Synth.

C Tin Wh.

O. A. Glk.

18

Bb Tpt.

Br.

Guit.

Cb.

D. Set

Guit.

El. Guit.

Synth.

C Tin Wh.

O. A. Glk.

19

Bb Tpt.

Br.

Guit.

Cb.

D. Set

Guit.

El. Guit.

Synth.

C Tin Wh.

O. A. Glk.

20

Bb Tpt.

Br.

Guit.

Cb.

D. Set

Guit.

El. Guit.

Synth.

C Tin Wh.

O. A. Glk.

21

Bb Tpt.

Br.

Guit.

Cb.

D. Set

Guit.

El. Guit.

Synth.

C Tin Wh.

O. A. Glk.

22

Bb Tpt.

Br.

Guit.

Cb.

D. Set

Guit.

El. Guit.

Synth.

C Tin Wh.

O. A. Glk.

23

Bb Tpt.

Br.

Guit.

Cb.

D. Set

Guit.

El. Guit.

Synth.

C Tin Wh.

O. A. Glk.

24

Bb Tpt.

Br.

Guit.

Cb.

D. Set

Guit.

El. Guit.

Synth.

C Tin Wh.

O. A. Glk.

25

Bb Tpt.

Br.

Guit.

Cb.

D. Set

Guit.

El. Guit.

Synth.

C Tin Wh.

O. A. Glk.

Detailed description: This musical score page contains measures 25 through 28. The instruments are arranged in ten staves. Measures 25-28 show active parts for Bb Tpt., Br., Guit., Cb., and D. Set. The Bb Tpt. and Br. parts feature melodic lines with various note values and rests. The Guit. part has a rhythmic pattern of eighth and sixteenth notes. The Cb. part has a simple bass line. The D. Set part features a complex, multi-layered rhythmic pattern. The Guit., El. Guit., Synth., C Tin Wh., and O. A. Glk. parts are mostly silent, indicated by whole rests.

26

Bb Tpt.

Br.

Guit.

Cb.

D. Set

Guit.

El. Guit.

Synth.

C Tin Wh.

O. A. Glk.

27

Bb Tpt.

Br.

Guit.

Cb.

D. Set

Guit.

El. Guit.

Synth.

C Tin Wh.

O. A. Glk.

28

Bb Tpt.

Br.

Guit.

Cb.

D. Set

Guit.

El. Guit.

Synth.

C Tin Wh.

O. A. Glk.

29

Bb Tpt.

Br.

Guit.

Cb.

D. Set

Guit.

El. Guit.

Synth.

C Tin Wh.

O. A. Glk.

30

Bb Tpt.

Br.

Guit.

Cb.

D. Set

Guit.

El. Guit.

Synth.

C Tin Wh.

O. A. Glk.

31

Bb Tpt.

Br.

Guit.

Cb.

D. Set

Guit.

El. Guit.

Synth.

C Tin Wh.

O. A. Glk.

32

Bb Tpt.

Br.

Guit.

Cb.

D. Set

Guit.

El. Guit.

Synth.

C Tin Wh.

O. A. Glk.

33

Bb Tpt.

Br.

Guit.

Cb.

D. Set

Guit.

El. Guit.

Synth.

C Tin Wh.

O. A. Glk.

34

Bb Tpt.

Br.

Guit.

Cb.

D. Set

Guit.

El. Guit.

Synth.

C Tin Wh.

O. A. Glk.

35

Bb Tpt.

Br.

Guit.

Cb.

D. Set

Guit.

El. Guit.

Synth.

C Tin Wh.

O. A. Glk.

Detailed description: This musical score page contains measures 35 through 38. The instruments listed on the left are Bb Tpt., Br., Guit., Cb., D. Set, Guit., El. Guit., Synth., C Tin Wh., and O. A. Glk. Measures 35 and 36 feature active notation for the Bb Tpt., Br., and Guit. parts. The Bb Tpt. part includes a melodic line with a key signature change to one sharp (F#) in measure 36. The Br. part follows a similar melodic contour. The Guit. part provides harmonic support with chords and single notes. The Cb. part has a simple bass line. The D. Set part features a complex, rhythmic pattern with many beamed notes. Measures 37 and 38 show the Guit., El. Guit., Synth., C Tin Wh., and O. A. Glk. parts, all of which are marked with a whole rest, indicating they are silent during these measures.

36

Bb Tpt.

Br.

Guit.

Cb.

D. Set

Guit.

El. Guit.

Synth.

C Tin Wh.

O. A. Glk.

37

Bb Tpt.

Br.

Guit.

Cb.

D. Set

Guit.

El. Guit.

Synth.

C Tin Wh.

O. A. Glk.

38

Bb Tpt.

Br.

Guit.

Cb.

D. Set

Guit.

El. Guit.

Synth.

C Tin Wh.

O. A. Glk.

39

Bb Tpt.

Br.

Guit.

Cb.

D. Set

Guit.

El. Guit.

Synth.

C Tin Wh.

O. A. Glk.

40

Bb Tpt.

Br.

Guit.

Cb.

D. Set

Guit.

El. Guit.

Synth.

C Tin Wh.

O. A. Glk.

41

Bb Tpt.

Br.

Guit.

Cb.

D. Set

Guit.

El. Guit.

Synth.

C Tin Wh.

O. A. Glk.

Detailed description of the musical score: The score is for measures 41 through 44. The key signature has one flat (Bb). The Bb Tpt. and Br. parts have whole rests in all measures. The Guit. (acoustic) part plays a rhythmic pattern of eighth-note chords in measures 41-43, followed by a single eighth note in measure 44. The Cb. part plays a single eighth note in measures 41-43, followed by a single eighth note in measure 44. The D. Set part plays a complex rhythmic pattern of eighth-note chords in measures 41-43, followed by a single eighth note in measure 44. The Guit. (electric) and El. Guit. parts play a single eighth note in measures 41-43, followed by a single eighth note in measure 44. The Synth. and C Tin Wh. parts have whole rests in all measures. The O. A. Glk. part plays a melodic line of eighth notes in measures 41-43, followed by a single eighth note in measure 44.

42

Bb Tpt.

Br.

Guit.

Cb.

D. Set

Guit.

El. Guit.

Synth.

C Tin Wh.

O. A. Glk.

43

Bb Tpt.

Br.

Guit.

Cb.

D. Set

Guit.

El. Guit.

Synth.

C Tin Wh.

O. A. Glk.

44

Bb Tpt.

Br.

Guit.

Cb.

D. Set

Guit.

El. Guit.

Synth.

C Tin Wh.

O. A. Glk.

Detailed description of the musical score: The score is for measures 44 through 47. The key signature has one flat (Bb). The time signature is 4/4. The instruments and their parts are: Bb Tpt. (B-flat Trumpet) has a whole rest in measure 44. Br. (Baritone) has a whole rest in measure 44. Guit. (Guitar) has a whole rest in measure 44, followed by a series of eighth-note chords in measures 45, 46, and 47. Cb. (Cello) has a whole rest in measure 44, followed by a series of eighth-note chords in measures 45, 46, and 47. D. Set (Drum Set) has a pattern of eighth-note chords in measures 45, 46, and 47. Guit. (Guitar) has a whole rest in measure 44, followed by a series of eighth-note chords in measures 45, 46, and 47. El. Guit. (Electric Guitar) has a whole rest in measure 44, followed by a series of eighth-note chords in measures 45, 46, and 47. Synth. (Synthesizer) has a whole rest in measure 44. C Tin Wh. (C Tin Whistle) has a whole rest in measure 44. O. A. Glk. (Organ/Accordion) has a whole rest in measure 44, followed by a series of eighth-note chords in measures 45, 46, and 47.

45

Bb Tpt.

Br.

Guit.

Cb.

D. Set

Guit.

El. Guit.

Synth.

C Tin Wh.

O. A. Glk.

Detailed description of the musical score: The score is for measures 45 through 48. The key signature has one flat (Bb). The Bb Tpt. and Br. parts are mostly rests. The Guit. part (first) plays a series of chords, mostly triads, with some eighth-note patterns. The Cb. part plays a simple melodic line. The D. Set part has a complex, rhythmic pattern with many notes and rests. The Guit. part (second) and El. Guit. part play a similar pattern of chords and single notes. The Synth. and C Tin Wh. parts are mostly rests. The O. A. Glk. part plays a series of chords, mostly triads, with some eighth-note patterns.

46

Bb Tpt.

Br.

Guit.

Cb.

D. Set

Guit.

El. Guit.

Synth.

C Tin Wh.

O. A. Glk.

47

Bb Tpt.

Br.

Guit.

Cb.

D. Set

Guit.

El. Guit.

Synth.

C Tin Wh.

O. A. Glk.

Detailed description of the musical score: The score is for measures 47 through 50. The key signature has one flat (Bb). The time signature is 8/8. The instruments and their parts are: Bb Tpt. (B-flat Trumpet) has a whole rest in all measures. Br. (Baritone) has a whole rest in all measures. Guit. (Guitar) has a whole rest in measure 47, followed by eighth notes in measures 48 and 49, and a half note in measure 50. Cb. (Cello) has a whole rest in measure 47, followed by eighth notes in measures 48 and 49, and a half note in measure 50. D. Set (Drum Set) has a complex pattern of eighth and sixteenth notes with 'x' marks indicating cymbal hits. Guit. (Guitar) has a whole rest in measure 47, followed by eighth notes in measures 48 and 49, and a half note in measure 50. El. Guit. (Electric Guitar) has a whole rest in measure 47, followed by eighth notes in measures 48 and 49, and a half note in measure 50. Synth. (Synthesizer) has a whole rest in all measures. C Tin Wh. (C Tin Whistle) has a whole rest in all measures. O. A. Glk. (O. A. Glockenspiel) has a whole rest in measure 47, followed by eighth notes in measures 48 and 49, and a half note in measure 50.

48

Bb Tpt.

Br.

Guit.

Cb.

D. Set

Guit.

El. Guit.

Synth.

C Tin Wh.

O. A. Glk.

49

Bb Tpt.

Br.

Guit.

Cb.

D. Set

Guit.

El. Guit.

Synth.

C Tin Wh.

O. A. Glk.

50

Bb Tpt.

Br.

Guit.

Cb.

D. Set

Guit.

El. Guit.

Synth.

C Tin Wh.

O. A. Glk.

51

Bb Tpt.

Br.

Guit.

Cb.

D. Set

Guit.

El. Guit.

Synth.

C Tin Wh.

O. A. Glk.

52

Bb Tpt.

Br.

Guit.

Cb.

D. Set

Guit.

El. Guit.

Synth.

C Tin Wh.

O. A. Glk.

53

Bb Tpt.

Br.

Guit.

Cb.

D. Set

Guit.

El. Guit.

Synth.

C Tin Wh.

O. A. Glk.

54

Bb Tpt.

Br.

Guit.

Cb.

D. Set

Guit.

El. Guit.

Synth.

C Tin Wh.

O. A. Glk.

55

Bb Tpt.

Br.

Guit.

Cb.

D. Set

Guit.

El. Guit.

Synth.

C Tin Wh.

O. A. Glk.

56

Bb Tpt.

Br.

Guit.

Cb.

D. Set

Guit.

El. Guit.

Synth.

C Tin Wh.

O. A. Glk.

57

Bb Tpt.

Br.

Guit.

Cb.

D. Set

Guit.

El. Guit.

Synth.

C Tin Wh.

O. A. Glk.

58

Bb Tpt.

Br.

Guit.

Cb.

D. Set

Guit.

El. Guit.

Synth.

C Tin Wh.

O. A. Glk.

59

Bb Tpt.

Br.

Guit.

Cb.

D. Set

Guit.

El. Guit.

Synth.

C Tin Wh.

O. A. Glk.

60

Bb Tpt.

Br.

Guit.

Cb.

D. Set

Guit.

El. Guit.

Synth.

C Tin Wh.

O. A. Glk.

61

Bb Tpt.

Br.

Guit.

Cb.

D. Set

Guit.

El. Guit.

Synth.

C Tin Wh.

O. A. Glk.

62

Bb Tpt.

Br.

Guit.

Cb.

D. Set

Guit.

El. Guit.

Synth.

C Tin Wh.

O. A. Glk.

63

Bb Tpt.

Br.

Guit.

Cb.

D. Set

Guit.

El. Guit.

Synth.

C Tin Wh.

O. A. Glk.

64

Bb Tpt.

Br.

Guit.

Cb.

D. Set

Guit.

El. Guit.

Synth.

C Tin Wh.

O. A. Glk.

65

The musical score for measures 65-68 consists of ten staves. The instruments and their parts are as follows:

- Bb Tpt.:** Treble clef, key of Bb. Measure 65 has a half note Bb. Measures 66-68 have whole rests.
- Br.:** Treble clef, key of Bb. Measure 65 has a half note Bb. Measures 66-68 have whole rests.
- Guit.:** Treble clef, key of Bb. Measure 65 has a half note chord (Bb, D, F). Measures 66-68 have eighth-note chords (Bb, D, F) on each beat.
- Cb.:** Bass clef, key of Bb. Measure 65 has a half note Bb. Measures 66-68 have eighth-note chords (Bb, D, F) on each beat.
- D. Set:** Percussion staff. Measures 65-68 feature a complex rhythmic pattern with multiple hits and cross-sticks.
- Guit.:** Treble clef, key of Bb. Measure 65 has a half note Bb. Measures 66-68 have whole rests.
- El. Guit.:** Treble clef, key of Bb. Measure 65 has a half note Bb. Measures 66-68 have whole rests.
- Synth.:** Treble clef, key of Bb. Measure 65 has a half note Bb. Measures 66-68 have whole rests.
- C Tin Wh.:** Treble clef, key of Bb. Measure 65 has a half note Bb. Measures 66-68 have whole rests.
- O. A. Glk.:** Treble clef, key of Bb. Measure 65 has a half note Bb. Measures 66-68 have whole rests.

66

Bb Tpt.

Br.

Guit.

Cb.

D. Set

Guit.

El. Guit.

Synth.

C Tin Wh.

O. A. Glk.