

♩ = 115

5

8

10

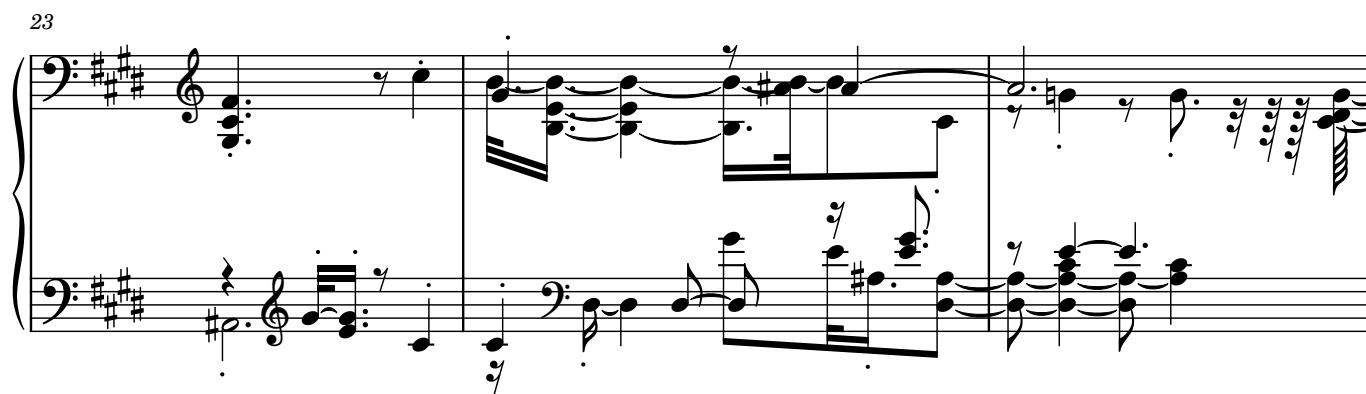
15

19



System 19-22: Treble and Bass staves in A major. Measures 19-22 show complex chordal textures and melodic lines. Measure 22 ends with a double bar line.

23



System 23-25: Treble and Bass staves. Measures 23-25 continue the musical development. Measure 25 ends with a double bar line.

26



System 26-28: Treble and Bass staves. Measures 26-28 continue the musical development. Measure 28 ends with a double bar line.

29



System 29-31: Treble and Bass staves. Measures 29-31 continue the musical development. Measure 31 ends with a double bar line.

32



System 32-34: Treble and Bass staves. Measures 32-34 continue the musical development. Measure 34 ends with a double bar line.

35

38

41

44

46

48

Measures 48-49 of a musical score in A major (three sharps). Measure 48 features a treble clef with a triplet of eighth notes (F#, G#, A) and a bass clef with a triplet of eighth notes (F#, G#, A). Measure 49 continues the melody in the treble and provides harmonic support in the bass.

50

Measures 50-53 of a musical score in A major. Measures 50 and 51 show a more active treble line with eighth and sixteenth notes, while the bass line remains relatively simple. Measures 52 and 53 continue the melodic development in the treble.

54

Measures 54-56 of a musical score in A major. Measure 54 has a complex treble line with many beamed notes. Measures 55 and 56 show a continuation of this complex texture, with the bass line providing a steady accompaniment.

57

Measures 57-60 of a musical score in A major. Measures 57 and 58 feature a treble line with a triplet of eighth notes. Measures 59 and 60 continue the melodic flow, with a triplet of eighth notes appearing in the bass line in measure 60.

61

Measures 61-64 of a musical score in A major. Measure 61 has a treble clef with a triplet of eighth notes. Measures 62 and 63 show a continuation of the melodic and harmonic themes. Measure 64 concludes the section with a final chord in the bass.

64

Measures 64 and 65 of a musical score in A major (three sharps). Measure 64 features a complex texture with sixteenth-note runs in both staves. Measure 65 continues with similar rhythmic patterns, including a triplet in the right hand.

66

Measures 66 and 67. Measure 66 shows a continuation of the sixteenth-note patterns. Measure 67 includes a triplet in the right hand and a more active bass line.

68

Measures 68 and 69. Measure 68 features a triplet in the left hand. Measure 69 has a triplet in the right hand and a sustained bass line.

72

Measures 72, 73, and 74. Measure 72 has a four-measure rest in the left hand. Measures 73 and 74 show a more active bass line with eighth-note patterns.

75

Measures 75, 76, 77, and 78. Measure 75 has a four-measure rest in the left hand. Measures 76-78 show a continuation of the active bass line and melodic fragments in the right hand.

79

System 1, measures 79-82. The key signature is three sharps (F#, C#, G#). The system consists of two staves. Measure 79: Treble clef has a whole rest, bass clef has a half note G#2. Measure 80: Treble clef has a half note A#3, bass clef has a half note G#2. Measure 81: Treble clef has a half note B4, bass clef has a half note F#3. Measure 82: Treble clef has a half note C#5, bass clef has a half note E3.

83

System 2, measures 83-86. Measure 83: Treble clef has a half note D#5, bass clef has a half note D#3. Measure 84: Treble clef has a half note E#5, bass clef has a half note E#3. Measure 85: Treble clef has a half note F#5, bass clef has a half note F#3. Measure 86: Treble clef has a half note G#5, bass clef has a half note G#3.

87

System 3, measures 87-90. Measure 87: Treble clef has a half note A#5, bass clef has a half note A#3. Measure 88: Treble clef has a half note B#5, bass clef has a half note B#3. Measure 89: Treble clef has a half note C#6, bass clef has a half note C#3. Measure 90: Treble clef has a half note D#6, bass clef has a half note D#3.

90

System 4, measures 91-94. Measure 91: Treble clef has a half note E#6, bass clef has a half note E#3. Measure 92: Treble clef has a half note F#6, bass clef has a half note F#3. Measure 93: Treble clef has a half note G#6, bass clef has a half note G#3. Measure 94: Treble clef has a half note A#6, bass clef has a half note A#3.

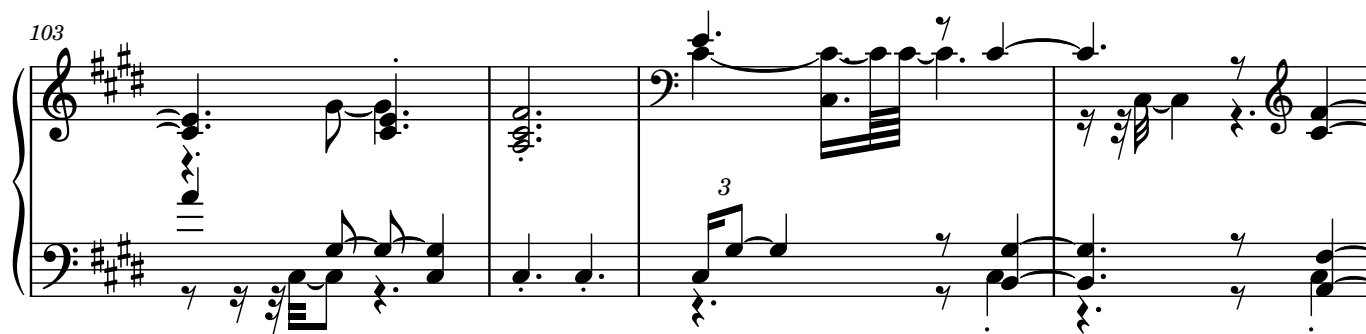
95

System 5, measures 95-98. Measure 95: Treble clef has a half note B#6, bass clef has a half note B#3. Measure 96: Treble clef has a half note C#7, bass clef has a half note C#3. Measure 97: Treble clef has a half note D#7, bass clef has a half note D#3. Measure 98: Treble clef has a half note E#7, bass clef has a half note E#3.

99



103



107

