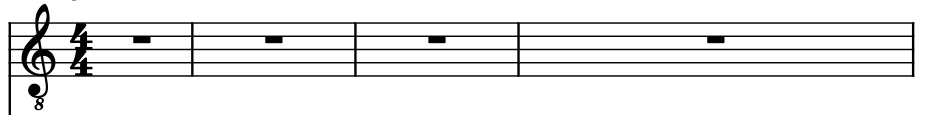
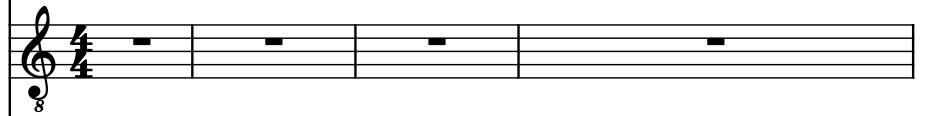


♩ = 120

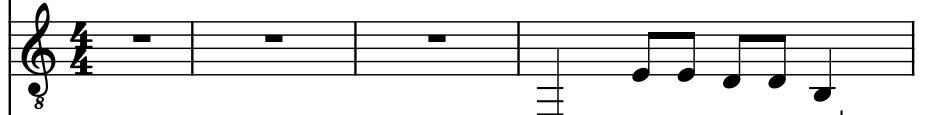
Electric Guitar, Guitar (Melody)



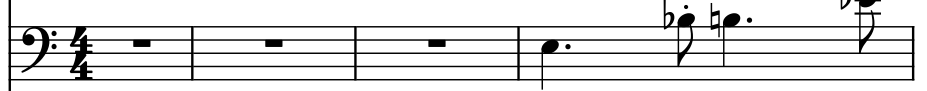
Electric Guitar, Guitar (Harmony)



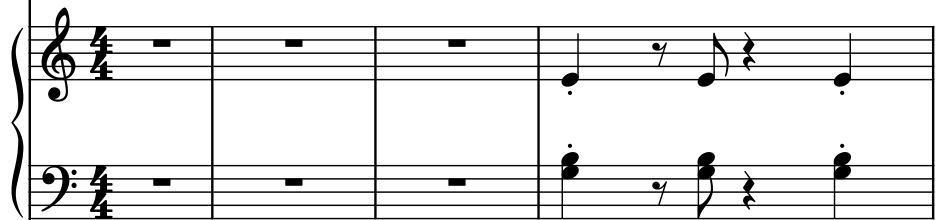
Contra Guitar, Muted Guitar



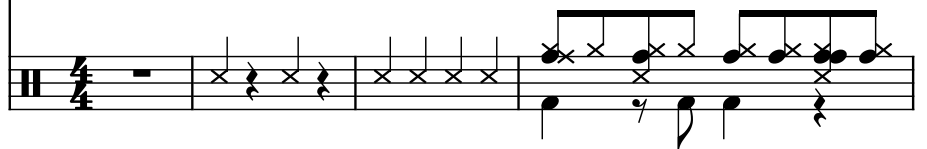
Fretless Electric Bass, Bass



Piano, Piano



Drumset, Drums



5

El. Guit.

El. Guit.

C. Guit.

Frtl. El. B.

Pno.

D. Set

Detailed description: This musical score page contains measures 5, 6, and 7 of a piece. The score is for a 6-piece band. The first staff, labeled 'El. Guit.', has a treble clef and a key signature of one flat (B-flat), with a '5' above the first measure. It contains whole rests in measures 5, 6, and 7. The second staff, also labeled 'El. Guit.', has a treble clef and a key signature of one flat. It features a melodic line in measure 5, a sixteenth-note run in measure 6, and a whole note chord in measure 7. The third staff, labeled 'C. Guit.', has a treble clef and a key signature of one flat, with a '5' above the first measure. It contains a continuous eighth-note melody across all three measures. The fourth staff, labeled 'Frtl. El. B.', has a bass clef and a key signature of one flat. It features a melodic line with eighth and sixteenth notes. The fifth staff, labeled 'Pno.', is a grand staff (treble and bass clefs) with a key signature of one flat. It contains a complex accompaniment with chords and moving lines. The sixth staff, labeled 'D. Set', has a double bar line at the beginning and contains a drum part with various rhythmic patterns, including eighth and sixteenth notes, and rests.

8

El. Guit.

El. Guit.

C. Guit.

Frtl. El. B.

Pno.

D. Set

This musical score page contains measures 8 and 9 for a 6-piece band. The instruments are Electric Guitar 1, Electric Guitar 2, Clean Guitar, Fretless Electric Bass, Piano, and Drums. Measure 8 features a melodic line in the first electric guitar, a rhythmic accompaniment in the second electric guitar, a clean guitar playing a sustained chord, a fretless bass with a triplet figure, a piano with a simple harmonic accompaniment, and a drum set with a steady eighth-note pattern. Measure 9 continues the melodic and harmonic themes, with the fretless bass playing a more complex line and the piano adding some chromatic movement in its accompaniment.

10

El. Guit.

El. Guit.

C. Guit.

Frtl. El. B.

Pno.

D. Set

12

El. Guit.

El. Guit.

C. Guit.

Frtl. El. B.

Pno.

D. Set

14

El. Guit.

El. Guit.

C. Guit.

Frtl. El. B.

Pno.

D. Set

Detailed description: This musical score page contains measures 14, 15, and 16. The instruments are Electric Guitar (El. Guit.), Country Guitar (C. Guit.), Fretless Electric Bass (Frtl. El. B.), Piano (Pno.), and Drums (D. Set). Measure 14 starts with a treble clef and a key signature of one flat. The El. Guit. part has a whole note G4. The C. Guit. part has a quarter note G4, followed by a half note A4, and a quarter note B4. The Frtl. El. B. part has a quarter note G3, followed by a half note A3, and a quarter note B3. The Pno. part has a quarter note G4, followed by a half note A4, and a quarter note B4. The D. Set part has a quarter note G4, followed by a half note A4, and a quarter note B4. Measure 15 continues the melody. The El. Guit. part has a whole note G4. The C. Guit. part has a quarter note G4, followed by a half note A4, and a quarter note B4. The Frtl. El. B. part has a quarter note G3, followed by a half note A3, and a quarter note B3. The Pno. part has a quarter note G4, followed by a half note A4, and a quarter note B4. The D. Set part has a quarter note G4, followed by a half note A4, and a quarter note B4. Measure 16 concludes the phrase. The El. Guit. part has a whole note G4. The C. Guit. part has a quarter note G4, followed by a half note A4, and a quarter note B4. The Frtl. El. B. part has a quarter note G3, followed by a half note A3, and a quarter note B3. The Pno. part has a quarter note G4, followed by a half note A4, and a quarter note B4. The D. Set part has a quarter note G4, followed by a half note A4, and a quarter note B4.

17

El. Guit.

El. Guit.

C. Guit.

Frtl. El. B.

Pno.

D. Set

The musical score for measures 17 and 18 is as follows:

- El. Guit. (Staff 1):** Treble clef, 8/8 time. Measure 17: Quarter notes G4, A4, B4, C5, D5, E5, F#5, G5. Measure 18: Quarter notes G5, F#5, E5, D5, C5, B4, A4, G4.
- El. Guit. (Staff 2):** Treble clef, 8/8 time. Measure 17: Chords G4-A4-B4, A4-B4-C5, B4-C5-D5, C5-D5-E5, D5-E5-F#5, E5-F#5-G5. Measure 18: Chords G5-F#5-E5, F#5-E5-D5, E5-D5-C5, D5-C5-B4, C5-B4-A4, B4-A4-G4.
- C. Guit. (Staff 3):** Treble clef, 8/8 time. Measure 17: Quarter notes G3, A3, B3, C4, D4, E4, F#4, G4. Measure 18: Quarter notes G4, F#4, E4, D4, C4, B3, A3, G3.
- Frtl. El. B. (Staff 4):** Bass clef, 8/8 time. Measure 17: Quarter note G2, eighth notes A2, B2, C3, D3, E3, F#3, G3. Measure 18: Quarter note G3, eighth notes F#3, E3, D3, C3, B2, A2, G2.
- Pno. (Staff 5):** Grand staff, 8/8 time. Measure 17: Bass clef, quarter notes G2, A2, B2, C3, D3, E3, F#3, G3. Treble clef, quarter notes G4, A4, B4, C5, D5, E5, F#5, G5. Measure 18: Bass clef, quarter notes G3, F#3, E3, D3, C3, B2, A2, G2. Treble clef, quarter notes G4, F#4, E4, D4, C4, B3, A3, G3.
- D. Set (Staff 6):** Bass clef, 8/8 time. Measure 17: Quarter notes G2, A2, B2, C3, D3, E3, F#3, G3. Measure 18: Quarter notes G3, F#3, E3, D3, C3, B2, A2, G2.

19

El. Guit.

El. Guit.

C. Guit.

Frtl. El. B.

Pno.

D. Set

3

Detailed description: This musical score page contains measures 19, 20, and 21. The instruments are arranged in six staves. The first two staves are for Electric Guitars (El. Guit.), both in treble clef with a key signature of one flat. The third staff is for a Clean Guitar (C. Guit.) in treble clef. The fourth staff is for a Fretless Electric Bass (Frtl. El. B.) in bass clef, featuring a triplet of eighth notes in measure 19. The fifth staff is for Piano (Pno.), with a grand staff (treble and bass clefs). The sixth staff is for Drums (D. Set) in a standard drum notation. The music is in 4/4 time. Measure 19 starts with a key signature change to one flat. Measure 20 contains a triplet of eighth notes in the bass line. Measure 21 continues the melodic and harmonic progression.



22

El. Guit.

El. Guit.

C. Guit.

Frtl. El. B.

Pno.

D. Set

25

El. Guit.

El. Guit.

C. Guit.

Frtl. El. B.

Pno.

D. Set

Detailed description: This musical score page contains measures 25 and 26. Measure 25 features a first electric guitar (El. Guit.) with a whole rest, a second electric guitar (El. Guit.) with a quarter note G4, an eighth-note A4, a quarter-note B4, and a quarter-note C5, followed by a quarter rest. The country guitar (C. Guit.) plays a quarter-note G2, an eighth-note A2, a quarter-note B2, and a quarter-note C3. The fretless electric bass (Frtl. El. B.) plays a quarter-note G2, an eighth-note A2, a quarter-note B2, and a quarter-note C3. The piano (Pno.) has a right-hand part with a quarter-note G4, an eighth-note A4, a quarter-note B4, and a quarter-note C5, and a left-hand part with a quarter-note G2, an eighth-note A2, a quarter-note B2, and a quarter-note C3. The double bass (D. Set) plays a quarter-note G2, an eighth-note A2, a quarter-note B2, and a quarter-note C3. Measure 26 features a first electric guitar (El. Guit.) with a whole rest, a second electric guitar (El. Guit.) with a quarter-note G4, an eighth-note A4, a quarter-note B4, and a quarter-note C5, followed by a quarter rest. The country guitar (C. Guit.) plays a quarter-note G2, an eighth-note A2, a quarter-note B2, and a quarter-note C3. The fretless electric bass (Frtl. El. B.) plays a quarter-note G2, an eighth-note A2, a quarter-note B2, and a quarter-note C3. The piano (Pno.) has a right-hand part with a quarter-note G4, an eighth-note A4, a quarter-note B4, and a quarter-note C5, and a left-hand part with a quarter-note G2, an eighth-note A2, a quarter-note B2, and a quarter-note C3. The double bass (D. Set) plays a quarter-note G2, an eighth-note A2, a quarter-note B2, and a quarter-note C3.

27

El. Guit.

El. Guit.

C. Guit.

Frtl. El. B.

Pno.

D. Set

Detailed description: This musical score page contains measures 27, 28, and 29. The instruments are arranged vertically: two Electric Guitars (El. Guit.), a Country Guitar (C. Guit.), a Fretless Electric Bass (Frtl. El. B.), a Piano (Pno.), and a Drums Set (D. Set). The first two El. Guitars play in the treble clef, while the C. Guit., Frtl. El. B., and Pno. are in the bass clef. The D. Set is on a single line with a C-clef. Measure 27 shows a variety of rhythmic patterns, including eighth and sixteenth notes, and rests. Measure 28 continues these patterns with some sustained notes. Measure 29 features a more complex melodic line in the first El. Guit. and a syncopated bass line in the Frtl. El. B. and Pno. The D. Set provides a consistent rhythmic foundation throughout the measures.

30

El. Guit.

El. Guit.

C. Guit.

Frtl. El. B.

Pno.

D. Set

32

El. Guit.

El. Guit.

C. Guit.

Frtl. El. B.

Pno.

D. Set

34

El. Guit.

El. Guit.

C. Guit.

Frtl. El. B.

Pno.

D. Set

Detailed description: This musical score page contains measures 34, 35, and 36. The score is for five instruments: two Electric Guitars (El. Guit.), a Country Guitar (C. Guit.), a Fretless Electric Bass (Frtl. El. B.), a Piano (Pno.), and a Drum Set (D. Set). Measure 34 begins with a treble clef and a key signature of one sharp (F#). The first El. Guit. part has a whole rest. The second El. Guit. part has an eighth rest followed by a sixteenth-note run. The C. Guit. part has a half note. The Frtl. El. B. part has a half note. The Pno. part has a half note. The D. Set part has a half note. Measure 35 continues the patterns. Measure 36 concludes the section with various rests and notes.

37

El. Guit.

El. Guit.

C. Guit.

Frtl. El. B.

Pno.

D. Set

8

8

8

40

El. Guit.

El. Guit.

C. Guit.

Frtl. El. B.

Pno.

D. Set

8

8

8

8

8

8



43

El. Guit.

El. Guit.

C. Guit.

Frtl. El. B.

Pno.

D. Set

8

8

8

3

46

El. Guit.

El. Guit.

C. Guit.

Frtl. El. B.

Pno.

D. Set

The musical score for measures 46-48 is arranged in six staves. The first two staves are for Electric Guitars (El. Guit.), both in treble clef with a key signature of one sharp (F#). The third staff is for Clean Guitar (C. Guit.) in treble clef. The fourth staff is for Fretless Electric Bass (Frtl. El. B.) in bass clef. The fifth staff is for Piano (Pno.), with a grand staff (treble and bass clefs). The sixth staff is for Drums (D. Set) in a standard drum notation format. The score consists of three measures. In measure 46, the guitars play a descending eighth-note scale, the bass plays a steady eighth-note pattern, and the piano provides harmonic support with chords and single notes. In measure 47, the guitars continue the scale, the bass maintains the eighth-note pattern, and the piano plays chords. In measure 48, the guitars conclude the phrase, the bass plays a final eighth-note pattern, and the piano plays chords. The drums play a consistent pattern of eighth notes throughout all three measures.

49

El. Guit.

El. Guit.

C. Guit.

Frtl. El. B.

Pno.

D. Set

51

El. Guit.

El. Guit.

C. Guit.

Frtl. El. B.

Pno.

D. Set

The musical score for measures 51 and 52 is as follows:

- El. Guit. (Top):** Treble clef, 8/8 time signature. Measure 51: Quarter note G4, eighth note A4, eighth note B4, quarter note C5, quarter note D5, quarter note E5. Measure 52: Quarter note F5, quarter note G5, quarter note A5, quarter note B5, quarter note C6, quarter note D6.
- El. Guit. (Second):** Treble clef, 8/8 time signature. Measure 51: Quarter note G4, eighth note A4, eighth note B4, quarter note C5, quarter note D5, quarter note E5. Measure 52: Quarter note F5, quarter note G5, quarter note A5, quarter note B5, quarter note C6, quarter note D6.
- C. Guit.:** Treble clef, 8/8 time signature. Measure 51: Quarter note G4, quarter rest, quarter note A4, quarter rest, quarter note B4, quarter rest. Measure 52: Quarter note C5, quarter rest, quarter note D5, quarter rest, quarter note E5, quarter rest.
- Frtl. El. B.:** Bass clef. Measure 51: Quarter note G2, quarter note A2, quarter note B2, quarter note C3, quarter note D3, quarter note E3. Measure 52: Quarter note F3, quarter note G3, quarter note A3, quarter note B3, quarter note C4, quarter note D4.
- Pno.:** Grand staff. Measure 51: Treble clef: Quarter rest, eighth note G4, quarter rest, eighth note A4, quarter note B4, quarter note C5. Bass clef: Quarter note G2, quarter note A2, quarter note B2, quarter note C3, quarter note D3, quarter note E3. Measure 52: Treble clef: Quarter note F5, quarter note G5, quarter note A5, quarter note B5, quarter note C6, quarter note D6. Bass clef: Quarter note F3, quarter note G3, quarter note A3, quarter note B3, quarter note C4, quarter note D4.
- D. Set:** Drum notation. Measure 51: Cymbal (x), eighth note G4, eighth note A4, eighth note B4, eighth note C5, eighth note D5, eighth note E5. Measure 52: Cymbal (x), eighth note F5, eighth note G5, eighth note A5, eighth note B5, eighth note C6, eighth note D6.

53

El. Guit.

El. Guit.

C. Guit.

Frtl. El. B.

Pno.

D. Set

55

El. Guit.

El. Guit.

C. Guit.

Frtl. El. B.

Pno.

D. Set

The musical score for page 22, measures 55-58, is written for a rock band. The instruments are: two Electric Guitars (El. Guit.), a Clean Guitar (C. Guit.), a Fretless Electric Bass (Frtl. El. B.), Piano (Pno.), and a Drum Set (D. Set). The score is in 4/4 time. Measures 55 and 56 show the guitars and bass playing a melodic line, while the piano and drums provide accompaniment. Measures 57 and 58 continue the melodic development with some changes in the guitar and bass parts, and the piano and drums providing a steady accompaniment.