

♩ = 135

Electric Guitar, Peter - Guitar



Electric Guitar



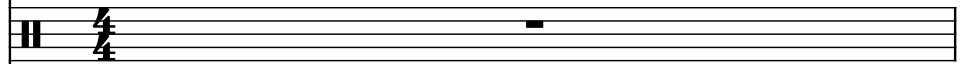
Electric Guitar, Mauser - Guitar



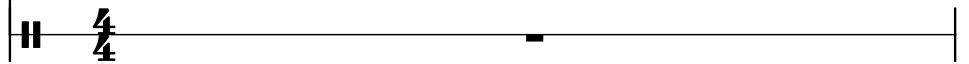
Electric Guitar



Drumset, Docent - Drums



Concert Snare Drum, Gunshot

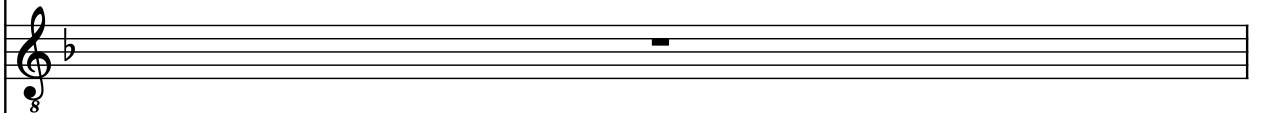


2

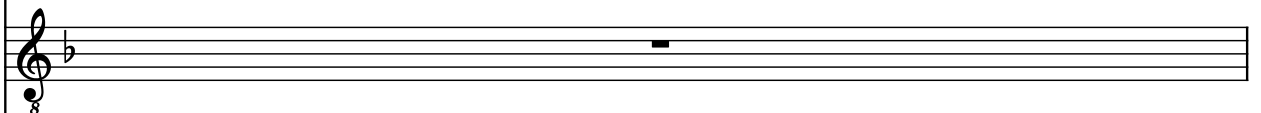
El. Guit.



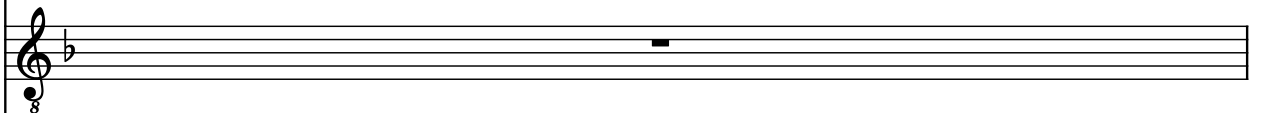
El. Guit.



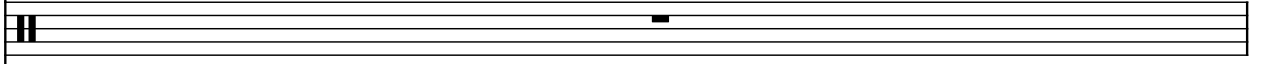
El. Guit.



El. Guit.



D. Set



Con. Sn.



3

El. Guit.

El. Guit.

El. Guit.

El. Guit.

D. Set

Con. Sn.

The musical score for measures 3 and 4 is written for a five-piece band. It includes four electric guitar staves, a double bass staff, and a conga/snare staff. The key signature has one flat (B-flat). The guitar parts consist of eighth-note patterns. The double bass part has a steady eighth-note pulse. The conga/snare part has a simple rhythmic pattern.

4

El. Guit.

El. Guit.

El. Guit.

El. Guit.

D. Set

Con. Sn.

The musical score for measures 5 and 6 continues the same instrumentation and key signature as the previous system. The guitar parts continue with eighth-note patterns. The double bass part continues with a steady eighth-note pulse. The conga/snare part continues with a simple rhythmic pattern.

5

El. Guit.

El. Guit.

El. Guit.

El. Guit.

D. Set

Con. Sn.

El. Guit.

El. Guit.

El. Guit.

El. Guit.

D. Set

Con. Sn.

6

El. Guit.

El. Guit.

El. Guit.

El. Guit.

D. Set

Con. Sn.

El. Guit.

El. Guit.

El. Guit.

El. Guit.

D. Set

Con. Sn.

7

El. Guit. 8

El. Guit. 8

El. Guit. 8

El. Guit. 8

D. Set

Con. Sn.

Detailed description: This system contains measures 7 and 8 of a musical score. It features five staves. The first four staves are for Electric Guitars (El. Guit.), each with a treble clef and a key signature of one flat (B-flat). The fifth staff is for Drums (D. Set) with a double bar line, and the sixth staff is for Congas (Con. Sn.) with a double bar line. Measures 7 and 8 show a complex guitar arrangement with many beamed eighth and sixteenth notes. The drum part in measure 7 includes a snare hit marked with an 'x' on the first eighth note. The conga part has a single hit in measure 7 and rests in measure 8.

9

El. Guit. 8

El. Guit. 8

El. Guit. 8

El. Guit. 8

D. Set

Con. Sn.

Detailed description: This system contains measures 9 and 10 of the musical score. It features the same five staves as the previous system. Measures 9 and 10 continue the guitar and drum parts. The guitar parts consist of dense, beamed eighth and sixteenth notes. The drum part in measure 9 has a snare hit marked with an 'x' on the first eighth note. In measure 10, the drum part features a more complex pattern with multiple hits. The conga part has a single hit in measure 9 and rests in measure 10.

11

El. Guit.

El. Guit.

El. Guit.

El. Guit.

D. Set

Con. Sn.

Detailed description: This system contains measures 11 and 12. It features five staves. The first four staves are for Electric Guitars (El. Guit.) in treble clef with a key signature of one flat (B-flat). The first and third staves have eighth-note patterns with beamed sixteenth notes. The second and fourth staves are mostly empty, with a single eighth rest in measure 11. The fifth staff is for Drums (D. Set) in a 2/4 time signature, showing a pattern of eighth notes with 'x' marks above them, indicating a specific drum sound. The sixth staff is for Congas and Snare (Con. Sn.) in a 2/4 time signature, showing a pattern of eighth notes with a single eighth rest in measure 12.

13

El. Guit.

El. Guit.

El. Guit.

El. Guit.

D. Set

Con. Sn.

Detailed description: This system contains measures 13 and 14. It features five staves. The first four staves are for Electric Guitars (El. Guit.) in treble clef with a key signature of one flat (B-flat). The first and third staves have eighth-note patterns with beamed sixteenth notes. The second and fourth staves are mostly empty, with a single eighth rest in measure 13. The fifth staff is for Drums (D. Set) in a 2/4 time signature, showing a pattern of eighth notes with 'x' marks above them, indicating a specific drum sound. The sixth staff is for Congas and Snare (Con. Sn.) in a 2/4 time signature, showing a pattern of eighth notes with a single eighth rest in measure 14.

14

El. Guit.

El. Guit.

El. Guit.

El. Guit.

D. Set

Con. Sn.

Measure 14: The first electric guitar plays a melodic line starting on G4, moving up to A4, B4, and C5, then down to B4, A4, G4, and F#4. The second electric guitar plays a bass line starting on G3, moving up to A3, B3, and C4, then down to B3, A3, G3, and F#3. The third electric guitar plays a bass line starting on G3, moving up to A3, B3, and C4, then down to B3, A3, G3, and F#3. The drum set and conga/snare parts are also shown.

15

El. Guit.

El. Guit.

El. Guit.

El. Guit.

D. Set

Con. Sn.

Measure 15: The first electric guitar plays a melodic line starting on G4, moving up to A4, B4, and C5, then down to B4, A4, G4, and F#4. The second electric guitar plays a bass line starting on G3, moving up to A3, B3, and C4, then down to B3, A3, G3, and F#3. The third electric guitar plays a bass line starting on G3, moving up to A3, B3, and C4, then down to B3, A3, G3, and F#3. The drum set and conga/snare parts are also shown.

16

El. Guit.

El. Guit.

El. Guit.

El. Guit.

D. Set

Con. Sn.

8

8

8

8

3

3

3

3

17

El. Guit.

El. Guit.

El. Guit.

El. Guit.

D. Set

Con. Sn.

8

8

8

8

3

3

3

3

18

El. Guit.

El. Guit.

El. Guit.

El. Guit.

D. Set

Con. Sn.

19

El. Guit.

El. Guit.

El. Guit.

El. Guit.

D. Set

Con. Sn.



21

El. Guit.

El. Guit.

El. Guit.

El. Guit.

D. Set

Con. Sn.

23

El. Guit.

El. Guit.

El. Guit.

El. Guit.

D. Set

Con. Sn.

24

El. Guit.

El. Guit.

El. Guit.

El. Guit.

D. Set

Con. Sn.

8

8

8

8

3

3

3

3

25

El. Guit.

El. Guit.

El. Guit.

El. Guit.

D. Set

Con. Sn.

8

8

8

8

3

3

3

3

26

El. Guit.

El. Guit.

El. Guit.

El. Guit.

D. Set

Con. Sn.

Measure 26: The first four electric guitar staves play a continuous eighth-note pattern. The double bass staff plays a triplet of eighth notes. The snare drum staff has a single hit. Measure 27: The first electric guitar staff continues the eighth-note pattern. The other three guitar staves, the double bass, and the snare drum have rests.

27

El. Guit.

El. Guit.

El. Guit.

El. Guit.

D. Set

Con. Sn.

Measure 27: The first electric guitar staff continues the eighth-note pattern. The other three guitar staves, the double bass, and the snare drum have rests. Measure 28: The first electric guitar staff continues the eighth-note pattern. The other three guitar staves, the double bass, and the snare drum have rests.

28

El. Guit.

El. Guit.

El. Guit.

El. Guit.

D. Set

Con. Sn.

29

El. Guit.

El. Guit.

El. Guit.

El. Guit.

D. Set

Con. Sn.

31

Pdf downloaded from [www.midicities.com](http://www.midicities.com)

32

El. Guit.

El. Guit.

El. Guit.

El. Guit.

D. Set

Con. Sn.

8

8

8

8

3

3

3

3

33

El. Guit.

El. Guit.

El. Guit.

El. Guit.

D. Set

Con. Sn.

8

8

8

8

3

3

3

3

34

El. Guit.

El. Guit.

El. Guit.

El. Guit.

D. Set

Con. Sn.

Detailed description: This system contains measures 34 and 35. Measure 34 features a guitar solo in the first staff with eighth-note triplets and a single eighth note. The second and fourth guitar staves have rests. The third guitar staff has eighth-note triplets. The double bass staff has eighth-note triplets with 'x' marks above them. The conga snare staff has a single eighth note. Measure 35 continues the guitar solo with eighth-note triplets and a single eighth note. The second and fourth guitar staves have rests. The third guitar staff has eighth-note triplets. The double bass staff has eighth-note triplets with 'x' marks above them. The conga snare staff has a single eighth note.

35

El. Guit.

El. Guit.

El. Guit.

El. Guit.

D. Set

Con. Sn.

Detailed description: This system contains measures 36 and 37. Measure 36 features a guitar solo in the first staff with eighth-note triplets and a single eighth note. The second and fourth guitar staves have rests. The third guitar staff has eighth-note triplets. The double bass staff has eighth-note triplets with 'x' marks above them. The conga snare staff has a single eighth note. Measure 37 continues the guitar solo with eighth-note triplets and a single eighth note. The second and fourth guitar staves have rests. The third guitar staff has eighth-note triplets. The double bass staff has eighth-note triplets with 'x' marks above them. The conga snare staff has a single eighth note.

37

El. Guit.

El. Guit.

El. Guit.

El. Guit.

D. Set

Con. Sn.

Detailed description: This system contains measures 37 and 38. It features five staves. The first four staves are for Electric Guitars (El. Guit.) in treble clef with a key signature of one flat (Bb). The first and third staves play a continuous eighth-note pattern. The second and fourth staves are silent, indicated by a whole rest. The fifth staff is for Drums (D. Set) in a 2/4 time signature, showing a consistent pattern of eighth notes with 'x' marks above them. The sixth staff is for Congas and Snare (Con. Sn.) in a 2/4 time signature, showing a pattern of eighth notes with 'x' marks above them.

39

El. Guit.

El. Guit.

El. Guit.

El. Guit.

D. Set

Con. Sn.

Detailed description: This system contains measures 39 and 40. It features five staves. The first four staves are for Electric Guitars (El. Guit.) in treble clef with a key signature of one flat (Bb). The first and third staves play a continuous eighth-note pattern. The second and fourth staves are silent, indicated by a whole rest. The fifth staff is for Drums (D. Set) in a 2/4 time signature, showing a consistent pattern of eighth notes with 'x' marks above them. The sixth staff is for Congas and Snare (Con. Sn.) in a 2/4 time signature, showing a pattern of eighth notes with 'x' marks above them.



41

El. Guit.

El. Guit.

El. Guit.

El. Guit.

D. Set

Con. Sn.

43

El. Guit.

El. Guit.

El. Guit.

El. Guit.

D. Set

Con. Sn.

44

El. Guit.

El. Guit.

El. Guit.

El. Guit.

D. Set

Con. Sn.

45

El. Guit.

El. Guit.

El. Guit.

El. Guit.

D. Set

Con. Sn.

46

El. Guit.

El. Guit.

El. Guit.

El. Guit.

D. Set

Con. Sn.

47

El. Guit.

El. Guit.

El. Guit.

El. Guit.

D. Set

Con. Sn.

48

El. Guit.

El. Guit.

El. Guit.

El. Guit.

D. Set

Con. Sn.

[illegible]

52

El. Guit.

El. Guit.

El. Guit.

El. Guit.

D. Set

Con. Sn.

El. Guit.

El. Guit.

El. Guit.

El. Guit.

D. Set

Con. Sn.

54

El. Guit.

El. Guit.

El. Guit.

El. Guit.

D. Set

Con. Sn.

El. Guit.

El. Guit.

El. Guit.

El. Guit.

D. Set

Con. Sn.

56

El. Guit. 8

El. Guit. 8

El. Guit. 8

El. Guit. 8

D. Set

Con. Sn.

Detailed description: This system contains measures 56 and 57. It features five staves: four for Electric Guitar (El. Guit.) and one for Drums (D. Set). The first four guitar staves are in treble clef with a key signature of one flat (Bb) and a common time signature of 4/4. The first two guitar staves have a '8' below the staff, indicating an octave. The third guitar staff has a melodic line with eighth and sixteenth notes, including a sharp sign (#). The fourth guitar staff is mostly silent. The drum staff shows a pattern of eighth notes with 'x' marks, indicating cymbal hits. The Con. Sn. (Conga Snare) staff is silent. Measure 56 ends with a double bar line. Measure 57 begins with a 1/4 time signature change and continues with the same instrumental parts.

58

El. Guit. 8

El. Guit. 8

El. Guit. 8

El. Guit. 8

D. Set

Con. Sn.

Detailed description: This system contains measure 58. It features five staves: four for Electric Guitar (El. Guit.) and one for Drums (D. Set). The first four guitar staves are in treble clef with a key signature of one flat (Bb) and a common time signature of 4/4. The first two guitar staves have a '8' below the staff, indicating an octave. The first guitar staff has a melodic line with eighth and sixteenth notes, including a flat sign (b). The other three guitar staves are silent. The drum staff is silent. The Con. Sn. staff is silent. Measure 58 ends with a double bar line.

59

El. Guit.

El. Guit.

El. Guit.

El. Guit.

D. Set

Con. Sn.

60

El. Guit.

El. Guit.

El. Guit.

El. Guit.

D. Set

Con. Sn.

61

El. Guit.

El. Guit.

El. Guit.

El. Guit.

D. Set

Con. Sn.

Detailed description: This system contains measures 61 through 64. Measures 61 and 63 feature a rhythmic pattern of eighth notes in the first, third, and fourth electric guitar staves. Measures 62 and 64 are rests for all instruments. The double bass staff plays a steady eighth-note pattern throughout. The snare drum staff has a single hit in measure 62.

62

El. Guit.

El. Guit.

El. Guit.

El. Guit.

D. Set

Con. Sn.

Detailed description: This system contains measures 65 through 68. Measures 65 and 67 feature a more complex eighth-note pattern in the first, third, and fourth electric guitar staves. Measures 66 and 68 are rests for all instruments. The double bass staff continues with eighth notes, and the snare drum staff has hits in measures 65 and 67.



64

El. Guit.

El. Guit.

El. Guit.

El. Guit.

D. Set

Con. Sn.

Detailed description: This system contains measures 64 and 65. It features five staves. The first four staves are for Electric Guitars (El. Guit.) in treble clef with a key signature of one flat (Bb). The first and third staves contain eighth-note riffs with double beams. The second and fourth staves are empty. The fifth staff is for Drums (D. Set) in a 2/4 time signature, showing a pattern of eighth notes with 'x' marks above them. The sixth staff is for Congas and Snare (Con. Sn.) in a 2/4 time signature, showing a simple eighth-note pattern.

66

El. Guit.

El. Guit.

El. Guit.

El. Guit.

D. Set

Con. Sn.

Detailed description: This system contains measures 66 and 67. It features five staves. The first four staves are for Electric Guitars (El. Guit.) in treble clef with a key signature of one flat (Bb). The first and third staves contain eighth-note riffs with double beams. The second and fourth staves are empty. The fifth staff is for Drums (D. Set) in a 2/4 time signature, showing a pattern of eighth notes with 'x' marks above them. The sixth staff is for Congas and Snare (Con. Sn.) in a 2/4 time signature, showing a simple eighth-note pattern.

68

El. Guit.

El. Guit.

El. Guit.

El. Guit.

D. Set

Con. Sn.

8

8

8

8

70

El. Guit.

El. Guit.

El. Guit.

El. Guit.

D. Set

Con. Sn.

8

8

8

8