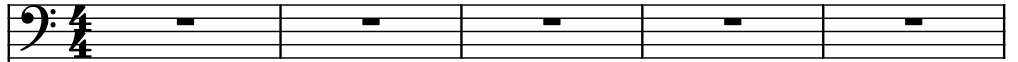
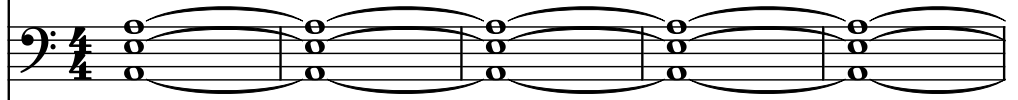


♩ = 140

Fretless Electric Bass, Bass



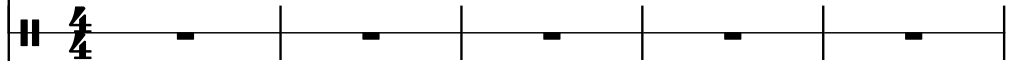
Strings, Strings



Square Synthesizer, Pre



Concert Snare Drum, Sweep



Saw Synthesizer, Lead

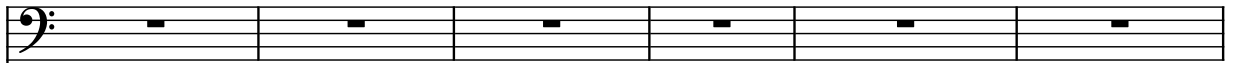


Drumset, Drums



6

Frtl. El. B.



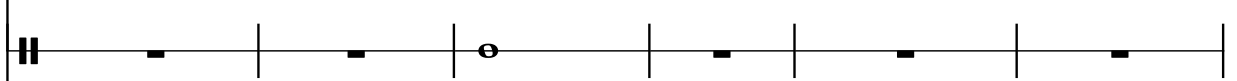
St.



Synth.



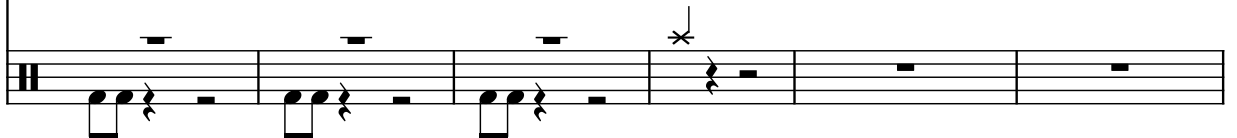
Con. Sn.



Synth.



D. Set



12

Frtrl. El. B.

St.

Synth.

Con. Sn.

Synth.

D. Set

This musical score block covers measures 12 through 16. It consists of six staves. The top three staves (Frtrl. El. B., St., and Synth.) contain mostly rests, with some notes appearing in measure 15. The bottom three staves (Con. Sn., Synth., and D. Set) contain more active musical notation. The Con. Sn. staff has a series of eighth notes. The Synth. staff has a complex pattern of eighth and sixteenth notes. The D. Set staff has a series of eighth notes.

17

Frtrl. El. B.

St.

Synth.

Con. Sn.

Synth.

D. Set

This musical score block covers measures 17 through 21. It consists of six staves. The top three staves (Frtrl. El. B., St., and Synth.) contain mostly rests, with some notes appearing in measure 20. The bottom three staves (Con. Sn., Synth., and D. Set) contain more active musical notation. The Con. Sn. staff has a series of eighth notes. The Synth. staff has a complex pattern of eighth and sixteenth notes. The D. Set staff has a series of eighth notes.

22

Frtrl. El. B.

St.

Synth.

Con. Sn.

Synth.

D. Set

Measures 22-25: The Frtrl. El. B., St., and Synth. staves show a progression of notes and rests. The Con. Sn. staff shows a series of rests. The Synth. staff shows a complex rhythmic pattern. The D. Set staff shows a series of rests and a complex rhythmic pattern in the final measure.

26

Frtrl. El. B.

St.

Synth.

Con. Sn.

Synth.

D. Set

Measures 26-28: The Frtrl. El. B., St., and Synth. staves show a progression of notes and rests. The Con. Sn. staff shows a series of rests. The Synth. staff shows a complex rhythmic pattern. The D. Set staff shows a series of rests and a complex rhythmic pattern in the final measure.

29

Frtrl. El. B.

St.

Synth.

Con. Sn.

Synth.

D. Set

Frtrl. El. B.

St.

Synth.

Con. Sn.

Synth.

D. Set

33

Frtrl. El. B.

St.

Synth.

Con. Sn.

Synth.

D. Set

Frtrl. El. B.

St.

Synth.

Con. Sn.

Synth.

D. Set

37

Frtrl. El. B.

St.

Synth.

Con. Sn.

Synth.

D. Set

Detailed description: This block contains the musical notation for measures 37, 38, and 39. The Frtrl. El. B. staff (Bass clef) plays a continuous eighth-note pattern. The St. staff (Bass clef) is mostly silent, with a few notes in measure 39. The Synth. staff (Treble clef) is mostly silent, with a few notes in measure 39. The Con. Sn. staff (Drum clef) is mostly silent, with a few notes in measure 39. The Synth. staff (Treble clef) plays a melody of eighth and sixteenth notes. The D. Set staff (Drum clef) plays a complex pattern of eighth and sixteenth notes.

40

Frtrl. El. B.

St.

Synth.

Con. Sn.

Synth.

D. Set

Detailed description: This block contains the musical notation for measures 40, 41, and 42. The Frtrl. El. B. staff (Bass clef) plays a continuous eighth-note pattern. The St. staff (Bass clef) is mostly silent, with a few notes in measure 42. The Synth. staff (Treble clef) is mostly silent, with a few notes in measure 42. The Con. Sn. staff (Drum clef) is mostly silent, with a few notes in measure 42. The Synth. staff (Treble clef) plays a melody of eighth and sixteenth notes. The D. Set staff (Drum clef) plays a complex pattern of eighth and sixteenth notes.

43

Frtrl. El. B.

St.

Synth.

Con. Sn.

Synth.

D. Set

Detailed description: This block contains the musical notation for measures 43, 44, and 45. The Frtrl. El. B. staff (Bass clef) plays a continuous eighth-note pattern. The St. staff (Bass clef) is mostly silent with occasional rests. The Synth. staff (Treble clef) is mostly silent. The Con. Sn. staff (Drum clef) has a few notes. The Synth. staff (Bass/Treble clef) plays a melodic line. The D. Set staff (Drum clef) has a complex pattern of notes and rests.

46

Frtrl. El. B.

St.

Synth.

Con. Sn.

Synth.

D. Set

Detailed description: This block contains the musical notation for measures 46, 47, and 48. The Frtrl. El. B. staff (Bass clef) continues its eighth-note pattern. The St. staff (Bass clef) is mostly silent. The Synth. staff (Treble clef) is mostly silent. The Con. Sn. staff (Drum clef) has a few notes. The Synth. staff (Bass/Treble clef) plays a melodic line. The D. Set staff (Drum clef) has a complex pattern of notes and rests.

49

Frtrl. El. B.

St.

Synth.

Con. Sn.

Synth.

D. Set

52

Frtrl. El. B.

St.

Synth.

Con. Sn.

Synth.

D. Set

55

Frtrl. El. B.

St.

Synth.

Con. Sn.

Synth.

D. Set

Measures 55-58. The Frtrl. El. B. part features a continuous eighth-note bass line. The St., Synth., and Con. Sn. parts are silent. The D. Set part plays a steady eighth-note pattern with a cymbal on the third measure.

59

Frtrl. El. B.

St.

Synth.

Con. Sn.

Synth.

D. Set

Measures 59-61. The Frtrl. El. B. part continues its eighth-note pattern. The St., Synth., and Con. Sn. parts are silent. The D. Set part continues its eighth-note pattern, ending with a double cymbal on the final measure.