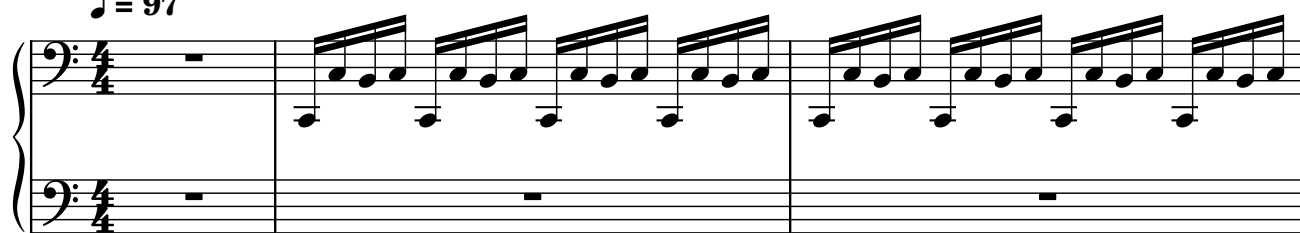


♩ = 97



12

Measures 12-13 of a piano piece. Measure 12 features a treble clef with a key signature of one sharp (F#) and a bass clef with a key signature of one flat (Bb). The right hand plays a series of eighth notes, while the left hand plays a steady eighth-note accompaniment. Measure 13 continues the pattern with a change in the right-hand melody.

14

Measures 14-15. Measure 14 has a key signature of one sharp (F#) in both staves. The right hand plays a more complex eighth-note pattern, and the left hand continues its accompaniment. Measure 15 shows a key change to one flat (Bb) in the right hand, while the left hand remains in Bb.

16

Measures 16-17. Both measures are in a key signature of one flat (Bb). The right hand plays a consistent eighth-note melody, and the left hand provides a steady accompaniment.

18

Measures 18-19. Both measures continue the eighth-note pattern in a key signature of one flat (Bb). The right hand's melody is consistent across both measures.

20

Measures 20-21. Measure 20 has a key signature of one flat (Bb) in both staves. Measure 21 shows a key change to one sharp (F#) in the right hand, while the left hand remains in Bb.

22

Measures 22-23. Measure 22 has a key signature of one sharp (F#) in both staves. Measure 23 shows a key change to one flat (Bb) in the right hand, while the left hand remains in Bb. The piece concludes with a final chord in the right hand.

23

Measures 23-24 of a piano piece. Measure 23 features a treble staff with a descending eighth-note scale and a bass staff with a steady eighth-note accompaniment. Measure 24 continues the treble staff's scale and the bass staff's accompaniment.

25

Measures 25-26. Measure 25 shows the treble staff with a descending eighth-note scale and the bass staff with a steady eighth-note accompaniment. Measure 26 continues the treble staff's scale and the bass staff's accompaniment.

27

Measures 27-28. Measure 27 features a treble staff with a descending eighth-note scale and a bass staff with a steady eighth-note accompaniment. Measure 28 continues the treble staff's scale and the bass staff's accompaniment.

28

Measures 28-29. Measure 28 shows the treble staff with a descending eighth-note scale and the bass staff with a steady eighth-note accompaniment. Measure 29 continues the treble staff's scale and the bass staff's accompaniment.

29

Measures 29-30. Measure 29 features a treble staff with a descending eighth-note scale and a bass staff with a steady eighth-note accompaniment. Measure 30 continues the treble staff's scale and the bass staff's accompaniment.

31

Measures 31-32. Measure 31 shows the treble staff with a descending eighth-note scale and the bass staff with a steady eighth-note accompaniment. Measure 32 continues the treble staff's scale and the bass staff's accompaniment.

33



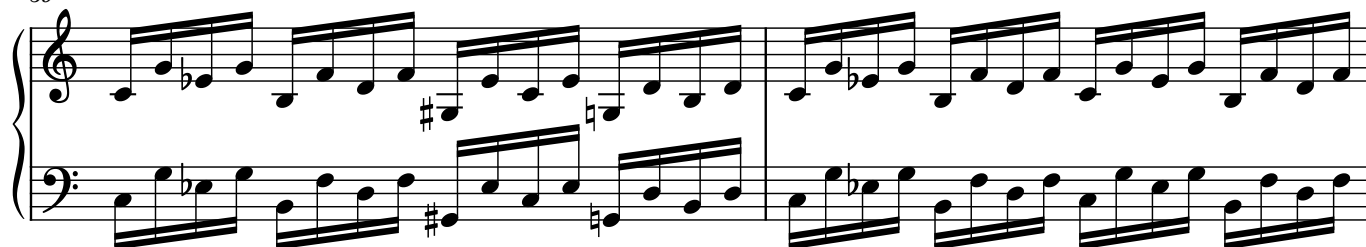
35



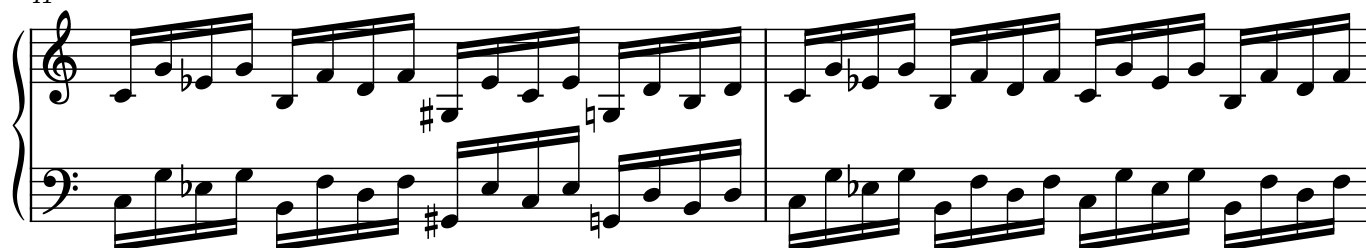
37



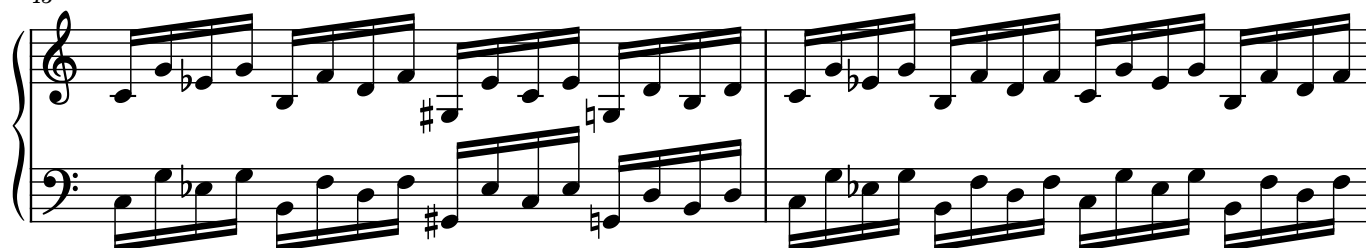
39



41



43



45

Measures 45 and 46 of a piano piece. Measure 45 features a treble clef with a key signature of one flat (B-flat) and a bass clef with a key signature of one sharp (F-sharp). The treble staff contains a series of eighth notes, while the bass staff contains a series of quarter notes. Measure 46 continues the pattern with similar rhythmic values and a key signature change to one sharp (F-sharp) in the bass staff.

47

Measures 47, 48, and 49. Measures 47 and 48 are in the bass clef with a key signature of one sharp (F-sharp), featuring a series of eighth notes. Measure 49 is a whole rest in the bass staff.

50

Measures 50 and 51. Measure 50 is in the bass clef with a key signature of one flat (B-flat), featuring a series of eighth notes. Measure 51 continues the pattern with similar rhythmic values and a key signature change to one sharp (F-sharp) in the bass staff.

52

Measures 52 and 53. Measure 52 is in the treble clef with a key signature of one flat (B-flat), featuring a series of eighth notes. Measure 53 continues the pattern with similar rhythmic values and a key signature change to one sharp (F-sharp) in the treble staff.

54

Measures 54 and 55. Measure 54 is in the treble clef with a key signature of one flat (B-flat), featuring a series of eighth notes. Measure 55 continues the pattern with similar rhythmic values and a key signature change to one sharp (F-sharp) in the treble staff.

55

Measures 55, 56, 57, and 58. Measure 55 is in the bass clef with a key signature of one sharp (F-sharp), featuring a series of eighth notes. Measure 56 is in the treble clef with a key signature of one sharp (F-sharp), featuring a series of eighth notes. Measure 57 is in the bass clef with a key signature of one sharp (F-sharp), featuring a series of eighth notes. Measure 58 is in the treble clef with a key signature of one sharp (F-sharp), featuring a series of eighth notes.

56

Measures 56-57: Treble and bass staves. Measure 56 features a treble staff with eighth-note runs and a bass staff with a steady eighth-note accompaniment. Measure 57 continues the treble staff's eighth-note pattern while the bass staff remains consistent.

58

Measures 58-59: Treble and bass staves. Measure 58 shows a treble staff with a more complex eighth-note pattern and a bass staff with a steady eighth-note accompaniment. Measure 59 continues the treble staff's pattern, with the bass staff maintaining its accompaniment.

60

Measures 60-61: Treble and bass staves. Measure 60 features a treble staff with a steady eighth-note pattern and a bass staff with a steady eighth-note accompaniment. Measure 61 continues the treble staff's pattern, with the bass staff maintaining its accompaniment.

62

Measures 62-63: Treble and bass staves. Measure 62 shows a treble staff with a steady eighth-note pattern and a bass staff with a steady eighth-note accompaniment. Measure 63 continues the treble staff's pattern, with the bass staff maintaining its accompaniment.

64

Measures 64-65: Treble and bass staves. Measure 64 features a treble staff with a steady eighth-note pattern and a bass staff with a steady eighth-note accompaniment. Measure 65 continues the treble staff's pattern, with the bass staff maintaining its accompaniment.

66

Measures 66-68: Treble and bass staves. Measure 66 shows a treble staff with a steady eighth-note pattern and a bass staff with a steady eighth-note accompaniment. Measure 67 continues the treble staff's pattern, with the bass staff maintaining its accompaniment. Measure 68 concludes the section with a final chord in the treble staff and a steady eighth-note accompaniment in the bass staff.