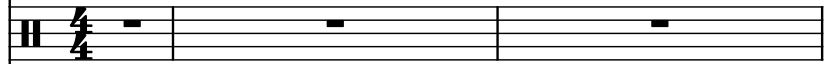


♩ = 120

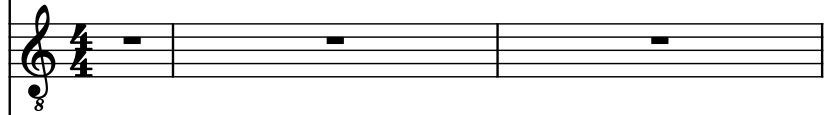
Bass Guitar, Chris Novoselic -Bass-



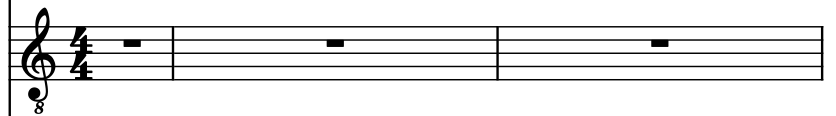
Drumset, Chad Chunning -Drums-



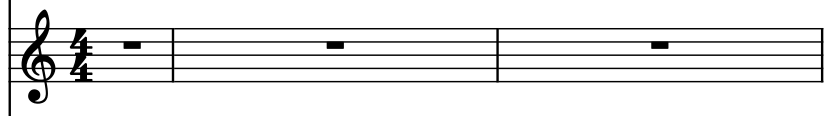
Electric Guitar, Kurt Cobain -Guitar 1-



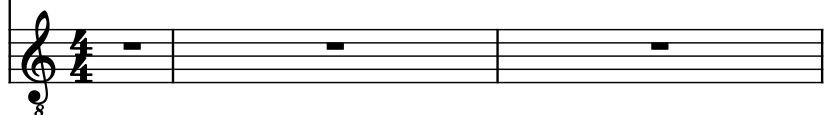
Electric Guitar, Kurt Cobain -Guitar Solos-



Brass, Kurt Cobain -Vocals-



Electric Guitar, Blew from "Bleach"

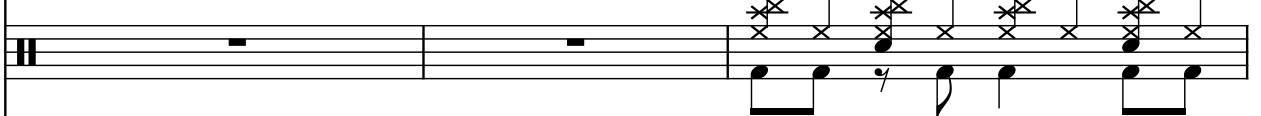


3

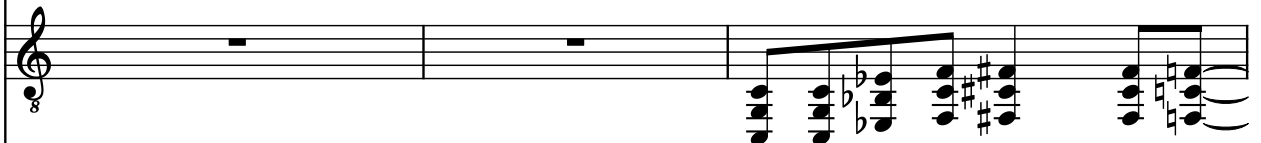
B. Guit.



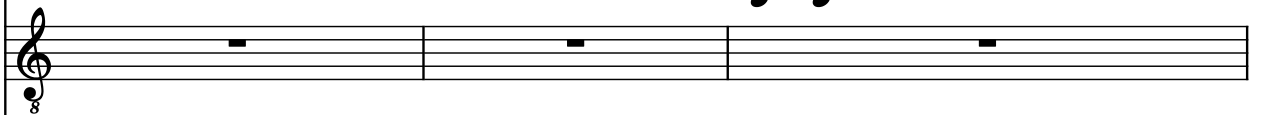
D. Set



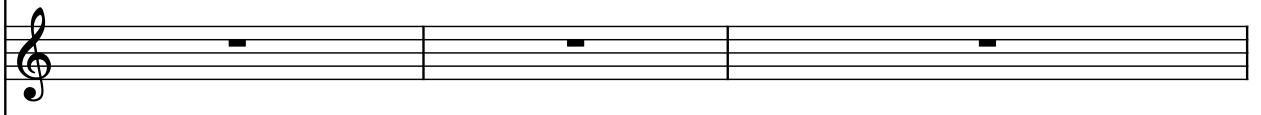
El. Guit.



El. Guit.



Br.



El. Guit.



6

B. Guit.

D. Set

El. Guit.

El. Guit.

Br.

El. Guit.

The musical score for measures 6 and 7 features a Bass Guitar (B. Guit.) and Drums (D. Set) with active parts. The Bass Guitar plays a melodic line in the bass clef, while the Drums provide a rhythmic accompaniment. The Electric Guitars (El. Guit.) and Brass (Br.) are mostly silent, with some minimal activity in the Electric Guitar 1 and 2 staves.

8

B. Guit.

D. Set

El. Guit.

El. Guit.

Br.

El. Guit.

The musical score for measures 8 and 9 continues the arrangement. The Bass Guitar (B. Guit.) and Drums (D. Set) maintain their active parts. The Electric Guitars (El. Guit.) and Brass (Br.) show more activity in measure 9, with the Electric Guitar 1 and 2 staves featuring some melodic lines and the Brass staff having a few notes.

10

B. Guit.

D. Set

El. Guit.

El. Guit.

Br.

El. Guit.

12

B. Guit.

D. Set

El. Guit.

El. Guit.

Br.

El. Guit.

14

B. Guit.

D. Set

El. Guit.

El. Guit.

Br.

El. Guit.

16

B. Guit.

D. Set

El. Guit.

El. Guit.

Br.

El. Guit.

18

B. Guit.

D. Set

El. Guit.

El. Guit.

Br.

El. Guit.



20

B. Guit.

D. Set

El. Guit.

El. Guit.

Br.

El. Guit.



22

B. Guit.

D. Set

El. Guit.

El. Guit.

Br.

El. Guit.

8

8

24

B. Guit.

D. Set

El. Guit.

El. Guit.

Br.

El. Guit.

8

8

26

B. Guit.

D. Set

El. Guit.

El. Guit.

Br.

El. Guit.

Measure 26: Bass guitar plays a descending eighth-note scale. Drums play a quarter note followed by an eighth note. Electric guitar 1 plays a chord of B-flat, D, and F. Electric guitar 2 plays a whole note chord of B-flat, D, and F. Brass plays a quarter note B-flat. Electric guitar 3 plays a whole note chord of B-flat, D, and F.

Measure 27: Bass guitar plays a descending eighth-note scale. Drums play a quarter note followed by an eighth note. Electric guitar 1 plays a chord of B-flat, D, and F. Electric guitar 2 plays a whole note chord of B-flat, D, and F. Brass plays a quarter note B-flat. Electric guitar 3 plays a whole note chord of B-flat, D, and F.

28

B. Guit.

D. Set

El. Guit.

El. Guit.

Br.

El. Guit.

Measure 28: Bass guitar plays a descending eighth-note scale. Drums play a quarter note followed by an eighth note. Electric guitar 1 plays a chord of B-flat, D, and F. Electric guitar 2 plays a whole note chord of B-flat, D, and F. Brass plays a quarter note B-flat. Electric guitar 3 plays a whole note chord of B-flat, D, and F.

Measure 29: Bass guitar plays a descending eighth-note scale. Drums play a quarter note followed by an eighth note. Electric guitar 1 plays a chord of B-flat, D, and F. Electric guitar 2 plays a whole note chord of B-flat, D, and F. Brass plays a quarter note B-flat. Electric guitar 3 plays a whole note chord of B-flat, D, and F.

30

B. Guit.

D. Set

El. Guit.

El. Guit.

Br.

El. Guit.

32

B. Guit.

D. Set

El. Guit.

El. Guit.

Br.

El. Guit.



34

B. Guit.

D. Set

El. Guit.

El. Guit.

Br.

El. Guit.

36

B. Guit.

D. Set

El. Guit.

El. Guit.

Br.

El. Guit.

38

B. Guit.

D. Set

El. Guit.

El. Guit.

Br.

El. Guit.

40

B. Guit.

D. Set

El. Guit.

El. Guit.

Br.

El. Guit.

42

B. Guit.

D. Set

El. Guit.

El. Guit.

Br.

El. Guit.

44

B. Guit.

D. Set

El. Guit.

El. Guit.

Br.

El. Guit.

46

B. Guit.

D. Set

El. Guit.

El. Guit.

Br.

El. Guit.



48

B. Guit.

D. Set

El. Guit.

El. Guit.

Br.

El. Guit.



50

B. Guit.

D. Set

El. Guit.

El. Guit.

Br.

El. Guit.

Measure 50: Bass guitar plays a descending eighth-note scale. Drums play a pattern of eighth notes and quarter notes. Electric guitar 1 plays a series of chords. Electric guitar 2 plays a single note. Brass plays a single note. Electric guitar 3 is silent.

Measure 51: Bass guitar continues the descending eighth-note scale. Drums continue the rhythmic pattern. Electric guitar 1 plays a series of chords. Electric guitar 2 plays a single note. Brass plays a single note. Electric guitar 3 is silent.

52

B. Guit.

D. Set

El. Guit.

El. Guit.

Br.

El. Guit.

Measure 52: Bass guitar plays a descending eighth-note scale. Drums play a pattern of eighth notes and quarter notes. Electric guitar 1 plays a series of chords. Electric guitar 2 plays a single note. Brass plays a single note. Electric guitar 3 is silent.

Measure 53: Bass guitar continues the descending eighth-note scale. Drums continue the rhythmic pattern. Electric guitar 1 plays a series of chords. Electric guitar 2 plays a single note. Brass plays a single note. Electric guitar 3 is silent.

54

B. Guit.

D. Set

El. Guit.

El. Guit.

Br.

El. Guit.

56

B. Guit.

D. Set

El. Guit.

El. Guit.

Br.

El. Guit.

58

B. Guit.

D. Set

El. Guit.

El. Guit.

Br.

El. Guit.

58

60

B. Guit.

D. Set

El. Guit.

El. Guit.

Br.

El. Guit.

60

62

B. Guit.

D. Set

El. Guit.

El. Guit.

Br.

El. Guit.

The musical score for measures 62 and 63 features a Bass Guitar (B. Guit.) and Drums (D. Set) with active parts. The Bass Guitar is in bass clef, playing a series of eighth and quarter notes with various accidentals. The Drums are in treble clef, showing a complex pattern of eighth and quarter notes with rests. There are three Electric Guitar (El. Guit.) staves, all of which are silent, indicated by a whole rest on the first line. A Brass (Br.) staff is also present and silent, indicated by a whole rest on the first line. The score is written for two measures, with a double bar line after measure 62.

64

B. Guit.

D. Set

El. Guit.

El. Guit.

Br.

El. Guit.

The musical score for measures 64 and 65 continues the arrangement. The Bass Guitar (B. Guit.) and Drums (D. Set) maintain their active parts. The Bass Guitar continues with eighth and quarter notes, while the Drums play a similar pattern. The three Electric Guitar (El. Guit.) staves remain silent, each with a whole rest on the first line. The Brass (Br.) staff is also silent, indicated by a whole rest on the first line. The score is written for two measures, with a double bar line after measure 64.



66

B. Guit.

D. Set

El. Guit.

El. Guit.

Br.

El. Guit.

Measure 66: Bass Guitar plays a descending eighth-note line. Drums play a pattern of eighth notes and rests. The first Electric Guitar has a whole rest. The second Electric Guitar plays a descending eighth-note line. The Brass and third Electric Guitar have whole rests.

Measure 67: Bass Guitar continues the descending eighth-note line. Drums play a similar pattern. The first Electric Guitar has a whole rest. The second Electric Guitar continues the descending eighth-note line. The Brass and third Electric Guitar have whole rests.

68

B. Guit.

D. Set

El. Guit.

El. Guit.

Br.

El. Guit.

Measure 68: Bass Guitar continues the descending eighth-note line. Drums play a similar pattern. The first Electric Guitar has a whole rest. The second Electric Guitar continues the descending eighth-note line. The Brass and third Electric Guitar have whole rests.

Measure 69: Bass Guitar continues the descending eighth-note line. Drums play a similar pattern. The first Electric Guitar has a whole rest. The second Electric Guitar continues the descending eighth-note line. The Brass and third Electric Guitar have whole rests.

70

B. Guit.

D. Set

El. Guit.

El. Guit.

Br.

El. Guit.

Measure 70: Bass guitar plays a quarter note B-flat, a quarter note D, a quarter note F, and a quarter note A. Drums play a snare on the second beat and a bass drum on the fourth beat. Electric guitar 1 plays a quarter note B-flat, a quarter note D, a quarter note F, and a quarter note A. Electric guitar 2 plays a quarter note B-flat, a quarter note D, a quarter note F, and a quarter note A. Brass plays a quarter note B-flat, a quarter note D, a quarter note F, and a quarter note A. Electric guitar 3 plays a quarter note B-flat, a quarter note D, a quarter note F, and a quarter note A.

Measure 71: Bass guitar plays a quarter note B-flat, a quarter note D, a quarter note F, and a quarter note A. Drums play a snare on the second beat and a bass drum on the fourth beat. Electric guitar 1 plays a quarter note B-flat, a quarter note D, a quarter note F, and a quarter note A. Electric guitar 2 plays a quarter note B-flat, a quarter note D, a quarter note F, and a quarter note A. Brass plays a quarter note B-flat, a quarter note D, a quarter note F, and a quarter note A. Electric guitar 3 plays a quarter note B-flat, a quarter note D, a quarter note F, and a quarter note A.

72

B. Guit.

D. Set

El. Guit.

El. Guit.

Br.

El. Guit.

Measure 72: Bass guitar plays a quarter note B-flat, a quarter note D, a quarter note F, and a quarter note A. Drums play a snare on the second beat and a bass drum on the fourth beat. Electric guitar 1 plays a quarter note B-flat, a quarter note D, a quarter note F, and a quarter note A. Electric guitar 2 plays a quarter note B-flat, a quarter note D, a quarter note F, and a quarter note A. Brass plays a quarter note B-flat, a quarter note D, a quarter note F, and a quarter note A. Electric guitar 3 plays a quarter note B-flat, a quarter note D, a quarter note F, and a quarter note A.

Measure 73: Bass guitar plays a quarter note B-flat, a quarter note D, a quarter note F, and a quarter note A. Drums play a snare on the second beat and a bass drum on the fourth beat. Electric guitar 1 plays a quarter note B-flat, a quarter note D, a quarter note F, and a quarter note A. Electric guitar 2 plays a quarter note B-flat, a quarter note D, a quarter note F, and a quarter note A. Brass plays a quarter note B-flat, a quarter note D, a quarter note F, and a quarter note A. Electric guitar 3 plays a quarter note B-flat, a quarter note D, a quarter note F, and a quarter note A.

74

B. Guit.

D. Set

El. Guit.

El. Guit.

Br.

El. Guit.

76

B. Guit.

D. Set

El. Guit.

El. Guit.

Br.

El. Guit.

78

B. Guit.

D. Set

El. Guit.

El. Guit.

Br.

El. Guit.

80

B. Guit.

D. Set

El. Guit.

El. Guit.

Br.

El. Guit.

84

Pdf downloaded from [www.midicities.com](http://www.midicities.com)

B. Guit.

D. Set

El. Guit.

El. Guit.

Br.

El. Guit.

The musical score for measures 87-90 is as follows:

- B. Guit. (Bass Guitar):** Measures 87-90. The staff is in bass clef. It features a rhythmic pattern of eighth and sixteenth notes, with a final measure containing a whole note.
- D. Set (Double Bass):** Measures 87-90. The staff is in bass clef. It features a rhythmic pattern of eighth and sixteenth notes, with a final measure containing a whole note.
- El. Guit. (Electric Guitar 1):** Measures 87-90. The staff is in treble clef. It features a long, sustained note (half note) in the first measure, which continues through measure 90.
- El. Guit. (Electric Guitar 2):** Measures 87-90. The staff is in treble clef. It features a short, sustained note (quarter note) in the first measure, which continues through measure 90.
- Br. (Brass):** Measures 87-90. The staff is in treble clef. It features a melodic line starting with a half note in the first measure, followed by a quarter note in the second measure, and a half note in the third measure.
- El. Guit. (Electric Guitar 3):** Measures 87-90. The staff is in treble clef. It features a short, sustained note (quarter note) in the first measure, which continues through measure 90.

♩ = 170  
| — 171

89

B. Guit.

D. Set

El. Guit.

El. Guit.

Br.

El. Guit.

8

8

8

8