

♩ = 146

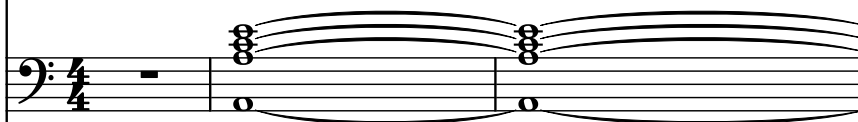
Piano,



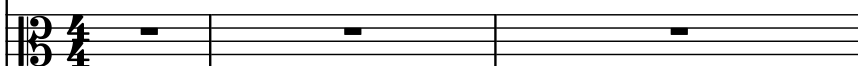
Harpsichord,



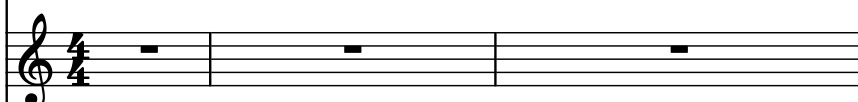
Brass,



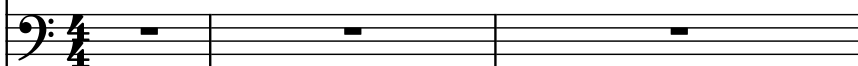
Violas,



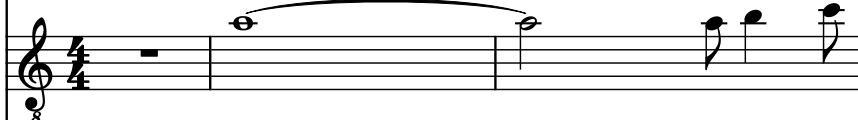
Flute,



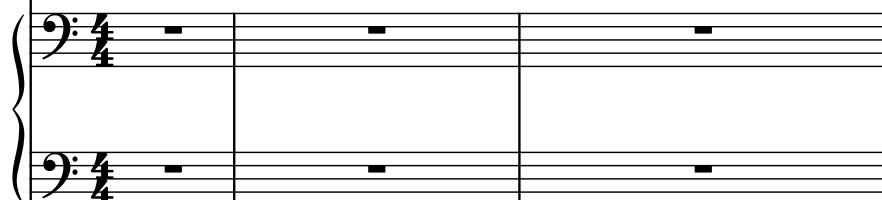
Brass Synthesizer,



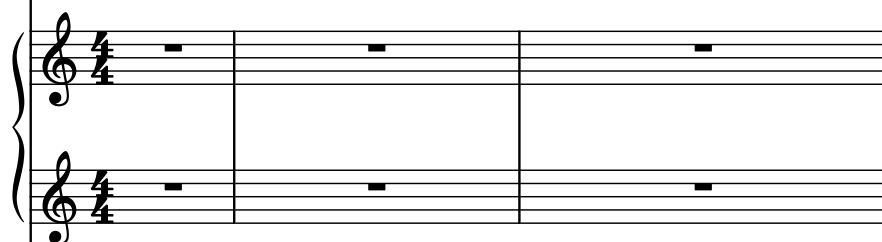
Electric Guitar,



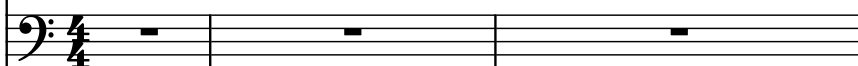
Hammond Organ,



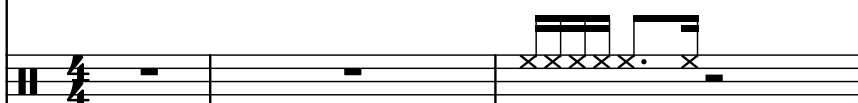
Saw Synthesizer,



Electric Bass,



Drumset,



Pdf downloaded from [www.midicities.com](http://www.midicities.com)

8

Pno.

Hch.

Br.

Vlas.

Fl.

Synth.

El. Guit.

Hm. Org.

Synth.

El. B.

D. Set

11

Pno.

Hch.

Br.

Vlas.

Fl.

Synth.

El. Guit.

Hm. Org.

Synth.

El. B.

D. Set

11

12

13

14

Pno.

Hch.

Br.

Vlas.

Fl.

Synth.

El. Guit.

Hm. Org.

Synth.

El. B.

D. Set

18

Pno.

Hch.

Br.

Vlas.

Fl.

Synth.

El. Guit.

Hm. Org.

Synth.

El. B.

D. Set

22

Pno.

Hch.

Br.

Vlas.

Fl.

Synth.

El. Guit.

Hm. Org.

Synth.

El. B.

D. Set

Detailed description: This musical score page contains measures 22, 23, and 24. The Piano part (Pno.) features a complex texture in measures 22 and 23 with many beamed sixteenth notes and chords, followed by a melodic phrase in measure 24. The Harp (Hch.) plays a steady eighth-note accompaniment in measures 22 and 23, then rests in measure 24. The Brass (Br.), Violas (Vlas.), and Harmonium Organ (Hm. Org.) are silent throughout. The Flute (Fl.) plays a simple melody in measures 22 and 23, then rests in measure 24. The Synth. part has a sustained bass note in measures 22 and 23, then a chord in measure 24. The Electric Guitar (El. Guit.) plays a rhythmic pattern of eighth notes in measures 22 and 23, then a melodic phrase in measure 24. The Electric Bass (El. B.) plays a steady eighth-note accompaniment in measures 22 and 23, then a melodic phrase in measure 24. The Drums (D. Set) play a consistent pattern of eighth notes in measures 22 and 23, then a different pattern in measure 24.

25

Pno.

Hch.

Br.

Vlas.

Fl.

Synth.

El. Guit.

Hm. Org.

Synth.

El. B.

D. Set

The musical score for page 8, starting at measure 25, features the following instruments and their parts:

- Pno.:** A complex melodic line with many beamed sixteenth notes, starting with a rest in the first measure.
- Hch.:** A sustained chord in the first measure, followed by a series of eighth notes.
- Br.:** A sustained chord in the first measure, followed by a series of eighth notes.
- Vlas.:** A sustained chord in the first measure, followed by a series of eighth notes.
- Fl.:** A sustained chord in the first measure, followed by a series of eighth notes.
- Synth.:** A sustained chord in the first measure, followed by a series of eighth notes.
- El. Guit.:** A rhythmic pattern of eighth notes, starting with a rest in the first measure.
- Hm. Org.:** A sustained chord in the first measure, followed by a series of eighth notes.
- Synth.:** A sustained chord in the first measure, followed by a series of eighth notes.
- El. B.:** A steady eighth-note line, starting with a rest in the first measure.
- D. Set:** A complex rhythmic pattern with many sixteenth notes, starting with a rest in the first measure.



29

Pno.

Hch.

Br.

Vlas.

Fl.

Synth.

El. Guit.

Hm. Org.

Synth.

El. B.

D. Set

The musical score for measures 29-31 features the following instrumentation and notation:

- Pno.:** Treble clef. Measure 29 has a whole rest, a quarter rest, and a quarter note chord (F4, C5). Measure 30 has a whole rest, a quarter note chord (F3, C4), and a quarter note chord (F3, C4). Measure 31 has a whole rest, a quarter note chord (F3, C4), and a quarter note chord (F3, C4).
- Hch.:** Bass clef. Measure 29 has a whole rest, a quarter note chord (F3, C4), and a quarter note chord (F3, C4). Measure 30 has a whole rest, a quarter note chord (F3, C4), and a quarter note chord (F3, C4). Measure 31 has a whole rest, a quarter note chord (F3, C4), and a quarter note chord (F3, C4).
- Br.:** Bass clef. Measure 29 has a whole rest, a quarter note chord (F3, C4), and a quarter note chord (F3, C4). Measure 30 has a whole rest, a quarter note chord (F3, C4), and a quarter note chord (F3, C4). Measure 31 has a whole rest, a quarter note chord (F3, C4), and a quarter note chord (F3, C4).
- Vlas.:** Bass clef. Measure 29 has a whole rest, a quarter note chord (F3, C4), and a quarter note chord (F3, C4). Measure 30 has a whole rest, a quarter note chord (F3, C4), and a quarter note chord (F3, C4). Measure 31 has a whole rest, a quarter note chord (F3, C4), and a quarter note chord (F3, C4).
- Fl.:** Treble clef. Measure 29 has a whole rest, a quarter note chord (F4, C5), and a quarter note chord (F4, C5). Measure 30 has a whole rest, a quarter note chord (F4, C5), and a quarter note chord (F4, C5). Measure 31 has a whole rest, a quarter note chord (F4, C5), and a quarter note chord (F4, C5).
- Synth.:** Treble clef. Measure 29 has a whole rest, a quarter note chord (F4, C5), and a quarter note chord (F4, C5). Measure 30 has a whole rest, a quarter note chord (F4, C5), and a quarter note chord (F4, C5). Measure 31 has a whole rest, a quarter note chord (F4, C5), and a quarter note chord (F4, C5).
- El. Guit.:** Treble clef. Measure 29 has a whole rest, a quarter note chord (F4, C5), and a quarter note chord (F4, C5). Measure 30 has a whole rest, a quarter note chord (F4, C5), and a quarter note chord (F4, C5). Measure 31 has a whole rest, a quarter note chord (F4, C5), and a quarter note chord (F4, C5).
- Hm. Org.:** Bass clef. Measure 29 has a whole rest, a quarter note chord (F3, C4), and a quarter note chord (F3, C4). Measure 30 has a whole rest, a quarter note chord (F3, C4), and a quarter note chord (F3, C4). Measure 31 has a whole rest, a quarter note chord (F3, C4), and a quarter note chord (F3, C4).
- Synth.:** Treble clef. Measure 29 has a whole rest, a quarter note chord (F4, C5), and a quarter note chord (F4, C5). Measure 30 has a whole rest, a quarter note chord (F4, C5), and a quarter note chord (F4, C5). Measure 31 has a whole rest, a quarter note chord (F4, C5), and a quarter note chord (F4, C5).
- El. B.:** Bass clef. Measure 29 has a whole rest, a quarter note chord (F3, C4), and a quarter note chord (F3, C4). Measure 30 has a whole rest, a quarter note chord (F3, C4), and a quarter note chord (F3, C4). Measure 31 has a whole rest, a quarter note chord (F3, C4), and a quarter note chord (F3, C4).
- D. Set:** Treble clef. Measure 29 has a whole rest, a quarter note chord (F4, C5), and a quarter note chord (F4, C5). Measure 30 has a whole rest, a quarter note chord (F4, C5), and a quarter note chord (F4, C5). Measure 31 has a whole rest, a quarter note chord (F4, C5), and a quarter note chord (F4, C5).

32

Pno.

Hch.

Br.

Vlas.

Fl.

Synth.

El. Guit.

Hm. Org.

Synth.

El. B.

D. Set

The musical score for page 32 features the following instruments and parts:

- Pno. (Piano):** Bass clef, treble clef. Measures 1-2: Rest, eighth note G4, quarter note F#4, quarter note E4. Measure 3: Rest, eighth note G#4, quarter note F#4, quarter note E4. Measure 4: Rest.
- Hch. (Harp):** Bass clef. Measures 1-2: Quarter note D3, quarter note D3, quarter note D3, quarter note D3. Measure 3: Quarter note D#3, quarter note D3, quarter note D3, quarter note D3. Measure 4: Rest.
- Br. (Brass):** Bass clef. Measures 1-2: Rest. Measure 3: Rest. Measure 4: Half note D2.
- Vlas. (Viola):** Bass clef. Measures 1-2: Rest. Measure 3: Rest. Measure 4: Half note D2, tied to the next measure.
- Fl. (Flute):** Treble clef. Measures 1-2: Quarter note D4, quarter note C#4, quarter note B4, quarter rest. Measure 3: Quarter note D4, quarter note C#4, quarter note B4, quarter note A4. Measure 4: Half note D4, tied to the next measure.
- Synth. (Synthesizer):** Bass clef, treble clef. Measures 1-2: Quarter note D3, quarter note D3, quarter note D3, quarter note D3. Measure 3: Quarter note D#3, quarter note D#3, quarter note D#3, quarter note D#3. Measure 4: Half note D3, tied to the next measure.
- El. Guit. (Electric Guitar):** Treble clef. Measures 1-2: Quarter note D4, quarter note C#4, quarter note B4, quarter note A4. Measure 3: Quarter note D#4, quarter note C#4, quarter note B4, quarter note A4. Measure 4: Half note D4, tied to the next measure.
- Hm. Org. (Harmonium Organ):** Bass clef. Measures 1-2: Rest. Measure 3: Rest. Measure 4: Rest.
- Synth. (Synthesizer):** Treble clef. Measures 1-2: Rest. Measure 3: Rest. Measure 4: Half note D4, tied to the next measure.
- El. B. (Electric Bass):** Bass clef. Measures 1-2: Quarter note D2, quarter note D2, quarter note D2, quarter note D2. Measure 3: Quarter note D#2, quarter note D2, quarter note D2, quarter note D2. Measure 4: Quarter note D2, quarter note D2, quarter note D2, quarter note D2.
- D. Set (Drum Set):** Treble clef. Measures 1-2: Quarter note D, quarter note C, quarter note B, quarter note A, quarter note G, quarter note F. Measure 3: Quarter note D, quarter note C, quarter note B, quarter note A, quarter note G, quarter note F. Measure 4: Quarter note D, quarter note C, quarter note B, quarter note A, quarter note G, quarter note F.

35

Pno.

Hch.

Br.

Vlas.

Fl.

Synth.

El. Guit.

Hm. Org.

Synth.

El. B.

D. Set

The musical score for measures 35-38 is as follows:

- Pno.:** Four measures of whole rests.
- Hch.:** Four measures of whole rests.
- Br.:** Four measures of music. Measure 35: quarter note G2, eighth note G2, quarter note A2. Measure 36: half note G2. Measure 37: quarter note G2, eighth note G2, quarter note A2. Measure 38: half note G2.
- Vlas.:** Four measures of music. Measure 35: triplet of eighth notes G2, A2, B2. Measure 36: triplet of eighth notes G2, A2, B2. Measure 37: triplet of eighth notes G2, A2, B2. Measure 38: triplet of eighth notes G2, A2, B2.
- Fl.:** Four measures of music. Measure 35: quarter note G2. Measure 36: half note G2. Measure 37: quarter note G2, eighth note G2, quarter note A2. Measure 38: half note G2.
- Synth.:** Four measures of music. Measure 35: quarter note G2. Measure 36: half note G2. Measure 37: quarter note G2, eighth note G2, quarter note A2. Measure 38: half note G2.
- El. Guit.:** Four measures of music. Measure 35: quarter note G2. Measure 36: half note G2. Measure 37: quarter note G2, eighth note G2, quarter note A2. Measure 38: half note G2.
- Hm. Org.:** Four measures of whole rests.
- Synth.:** Four measures of music. Measure 35: quarter note G2. Measure 36: half note G2. Measure 37: quarter note G2, eighth note G2, quarter note A2. Measure 38: half note G2.
- El. B.:** Four measures of music. Measure 35: quarter note G2, eighth note G2, quarter note A2. Measure 36: half note G2. Measure 37: quarter note G2, eighth note G2, quarter note A2. Measure 38: half note G2.
- D. Set:** Four measures of music. Measure 35: quarter note G2, eighth note G2, quarter note A2. Measure 36: half note G2. Measure 37: quarter note G2, eighth note G2, quarter note A2. Measure 38: half note G2.

39

Pno.

Hch.

Br.

Vlas.

Fl.

Synth.

El. Guit.

Hm. Org.

Synth.

El. B.

D. Set

Detailed description: This page contains a musical score for measures 39 through 42. The score is written for eleven instruments: Piano (Pno.), Harp (Hch.), Bassoon (Br.), Violas (Vlas.), Flute (Fl.), Synthesizer (Synth.), Electric Guitar (El. Guit.), Harmonium Organ (Hm. Org.), another Synthesizer (Synth.), Electric Bass (El. B.), and Double Bass (D. Set). Measures 39 and 40 are mostly rests for most instruments, with the Bassoon and Flute playing eighth notes. In measure 41, the Flute and Synthesizer play sustained notes, while the Electric Guitar and Electric Bass play eighth-note patterns. Measure 42 features a complex texture with the Piano, Flute, Synthesizer, Electric Guitar, and Electric Bass all playing active parts, including chords and eighth-note patterns. The Double Bass part consists of a steady eighth-note pattern throughout.

43

43

Pno.

Hch.

Br.

Vlas.

Fl.

Synth.

El. Guit.

Hm. Org.

Synth.

El. B.

D. Set

47

Pno.

Hch.

Br.

Vlas.

Fl.

Synth.

El. Guit.

Hm. Org.

Synth.

El. B.

D. Set

The musical score for measures 47-50 features a variety of instruments. The Piano (Pno.) and Synth. parts play a complex, multi-layered texture with many chords and moving lines. The Flute (Fl.) has a melodic line with some grace notes. The Electric Guitar (El. Guit.) plays a rhythmic pattern with some bends. The Harmonium Organ (Hm. Org.) has a simple, repetitive pattern. The Electric Bass (El. B.) plays a steady, rhythmic line. The Drum Set (D. Set) provides a steady beat with some fills. The Harp (Hch.), Brass (Br.), and Violas (Vlas.) are silent throughout these measures.

51

51

Pno.

Hch.

Br.

Vlas.

Fl.

Synth.

El. Guit.

Hm. Org.

Synth.

El. B.

D. Set

The musical score for measures 51-54 is arranged in a multi-staff format. The instruments and their parts are as follows:

- Pno. (Piano):** Treble clef. Measure 51 starts with a whole rest, followed by a series of chords and single notes in measures 52, 53, and 54.
- Hch. (Horn):** Bass clef. Measure 51 has a whole rest. Measures 52-54 feature a steady eighth-note accompaniment.
- Br. (Bassoon):** Bass clef. Measure 51 has a whole rest. Measures 52-54 are silent.
- Vlas. (Violoncello):** Bass clef. Measures 51-54 are silent.
- Fl. (Flute):** Treble clef. Measure 51 has a whole rest. Measures 52-54 feature a melodic line with eighth and sixteenth notes.
- Synth. (Synthesizer):** Treble and Bass clefs. Measures 52-54 feature sustained chords in both hands.
- El. Guit. (Electric Guitar):** Treble clef. Measures 51-52 are silent. Measure 53 features a dense, fast-moving chordal texture. Measure 54 is silent.
- Hm. Org. (Harmonium Organ):** Treble and Bass clefs. Measures 51-54 are silent.
- Synth. (Synthesizer):** Treble and Bass clefs. Measures 51-54 feature a melodic line in the treble and a sustained bass line in the bass.
- El. B. (Electric Bass):** Bass clef. Measures 51-54 feature a steady eighth-note accompaniment.
- D. Set (Drum Set):** Treble clef. Measures 51-54 feature a complex rhythmic pattern with various drum sounds indicated by 'x' marks.

55

Pno.

Hch.

Br.

Vlas.

Fl.

Synth.

El. Guit.

Hm. Org.

Synth.

El. B.

D. Set

Detailed description: This musical score page contains measures 55, 56, and 57. The instruments and their parts are as follows: Pno. (Piano) has a melodic line in measure 55 and sustained chords in 56 and 57. Hch. (Harp) plays a steady eighth-note accompaniment. Br. (Bassoon) and Vlas. (Violoncello) are silent. Fl. (Flute) has a melodic line in measure 55 and sustained notes in 56 and 57. Synth. (Synthesizer) plays a sustained chord in measure 55 and a sustained chord in 56 and 57. El. Guit. (Electric Guitar) plays a rhythmic pattern in measure 55 and sustained chords in 56 and 57. Hm. Org. (Hammond Organ) is silent. Synth. (Synthesizer) has a melodic line in measure 55 and sustained notes in 56 and 57. El. B. (Electric Bass) plays a steady eighth-note accompaniment. D. Set (Drum Set) plays a rhythmic pattern in measure 55 and sustained notes in 56 and 57.



58

58

Pno.

Hch.

Br.

Vlas.

Fl.

Synth.

El. Guit.

Hm. Org.

Synth.

El. B.

D. Set

The musical score for page 58 features the following instruments and parts:

- Pno. (Piano):** Treble clef, playing a melodic line with chords.
- Hch. (Harp):** Bass clef, playing a steady eighth-note accompaniment.
- Br. (Brass):** Bass clef, playing a steady eighth-note accompaniment.
- Vlas. (Violas):** Bass clef, playing a steady eighth-note accompaniment.
- Fl. (Flute):** Treble clef, playing a melodic line with chords.
- Synth. (Synthesizer):** Bass clef, playing a steady eighth-note accompaniment.
- El. Guit. (Electric Guitar):** Treble clef, playing a melodic line with chords.
- Hm. Org. (Horn):** Bass clef, playing a steady eighth-note accompaniment.
- Synth. (Synthesizer):** Treble clef, playing a melodic line with chords.
- El. B. (Electric Bass):** Bass clef, playing a steady eighth-note accompaniment.
- D. Set (Drums):** Treble clef, playing a steady eighth-note accompaniment.

61

Pno.

Hch.

Br.

Vlas.

Fl.

Synth.

El. Guit.

Hm. Org.

Synth.

El. B.

D. Set

The musical score for page 18, measures 61-64, is as follows:

- Measure 61:** Pno. (chords), Hch. (single notes), Br. (rest), Vlas. (rest), Fl. (single notes), Synth. (chords), El. Guit. (chords), Hm. Org. (rest), Synth. (single notes), El. B. (single notes), D. Set (drum pattern).
- Measure 62:** Pno. (chords), Hch. (single notes), Br. (rest), Vlas. (rest), Fl. (single notes), Synth. (chords), El. Guit. (rest), Hm. Org. (rest), Synth. (rest), El. B. (single notes), D. Set (drum pattern).
- Measure 63:** Pno. (chords), Hch. (single notes), Br. (rest), Vlas. (rest), Fl. (single notes), Synth. (chords), El. Guit. (chords), Hm. Org. (rest), Synth. (rest), El. B. (single notes), D. Set (drum pattern).
- Measure 64:** Pno. (chords), Hch. (single notes), Br. (rest), Vlas. (rest), Fl. (single notes), Synth. (chords), El. Guit. (rest), Hm. Org. (rest), Synth. (rest), El. B. (single notes), D. Set (drum pattern).

65

Pno.

Hch.

Br.

Vlas.

Fl.

Synth.

El. Guit.

Hm. Org.

Synth.

El. B.

D. Set

Detailed description: This musical score page contains measures 65, 66, and 67. The instruments and their parts are as follows: Pno. (Piano) in bass clef, playing chords and moving lines; Hch. (Harp) in bass clef, playing a steady eighth-note accompaniment; Br. (Bassoon) with a whole rest; Vlas. (Violoncello) with a whole rest; Fl. (Flute) in treble clef, playing a melodic line with eighth and quarter notes; Synth. (Synthesizer) in bass clef, playing sustained chords; El. Guit. (Electric Guitar) in treble clef, playing a fast eighth-note arpeggiated pattern in measure 65, then a slower eighth-note line; Hm. Org. (Hammond Organ) with two staves in bass clef, both with whole rests; Synth. (Synthesizer) with two staves in treble clef, playing sustained chords; El. B. (Electric Bass) in bass clef, playing a steady eighth-note line; and D. Set (Drum Set) in a standard drum notation, featuring a consistent eighth-note pattern with occasional accents and a fill in measure 67.

68

Pno.

Hch.

Br.

Vlas.

Fl.

Synth.

El. Guit.

Hm. Org.

Synth.

El. B.

D. Set

The musical score for measures 68-72 features the following details:

- Pno.:** Five measures of whole rests.
- Hch.:** Five measures of whole rests.
- Br.:** Five measures of music. Measure 68: half note G2. Measure 69: quarter note G2, eighth note A2, quarter note B2. Measure 70: half note G2. Measure 71: quarter note G2, eighth note A2, quarter note B2. Measure 72: half note G2.
- Vlas.:** Five measures of music. Measures 68-69: two beamed eighth notes (G2, A2) with a slur. Measures 70-71: two beamed eighth notes (G2, A2) with a slur. Measure 72: two beamed eighth notes (G2, A2) with a slur.
- Fl.:** Five measures of music. Measures 68-69: half note G2 with a slur. Measure 70: half note G2 with a slur. Measure 71: quarter note G2, quarter rest. Measure 72: half note G2 with a slur.
- Synth.:** Five measures of music. Measures 68-69: half note G2 with a slur. Measure 70: half note G2 with a slur. Measure 71: half note G2 with a slur. Measure 72: half note G2 with a slur.
- El. Guit.:** Five measures of music. Measures 68-69: half note G2 with a slur. Measure 70: half note G2 with a slur. Measure 71: half note G2 with a slur. Measure 72: half note G2 with a slur.
- Hm. Org.:** Five measures of whole rests.
- Synth.:** Five measures of music. Measures 68-69: half note G2 with a slur. Measure 70: half note G2 with a slur. Measure 71: half note G2 with a slur. Measure 72: half note G2 with a slur.
- El. B.:** Five measures of music. Measures 68-69: half note G2 with a slur. Measure 70: half note G2 with a slur. Measure 71: half note G2 with a slur. Measure 72: half note G2 with a slur.
- D. Set:** Five measures of music. Measures 68-69: half note G2 with a slur. Measure 70: half note G2 with a slur. Measure 71: half note G2 with a slur. Measure 72: half note G2 with a slur.

73

73

Pno.

Hch.

Br.

Vlas.

Fl.

Synth.

El. Guit.

Hm. Org.

Synth.

El. B.

D. Set

The musical score for measures 73-76 is arranged in a multi-staff format. The instruments and their parts are as follows:

- Pno.:** Treble clef. Measures 73-75 are whole rests. Measure 76 features a descending eighth-note triplet (G4, F#4, E4) followed by a quarter note (D4).
- Hch.:** Bass clef. Measures 73-75 are whole rests. Measure 76 is a whole rest.
- Br.:** Bass clef. Measures 73-75 contain eighth-note patterns: G2 (half), A2 (quarter), B2 (quarter), C3 (half), D3 (quarter), E3 (quarter), F3 (quarter), G3 (half). Measure 76 is a whole rest.
- Vlas.:** Bass clef. Measures 73-75 are whole rests. Measure 76 is a whole rest.
- Fl.:** Treble clef. Measures 73-75 are whole rests. Measure 76 features a descending eighth-note triplet (G4, F#4, E4) followed by a quarter note (D4).
- Synth. (top):** Treble clef. Measures 73-75 are whole rests. Measure 76 features a descending eighth-note triplet (G4, F#4, E4) followed by a quarter note (D4).
- El. Guit.:** Treble clef. Measures 73-75 are whole rests. Measure 76 features a descending eighth-note triplet (G4, F#4, E4) followed by a quarter note (D4).
- Hm. Org.:** Bass clef. Measures 73-75 are whole rests. Measure 76 features a descending eighth-note triplet (G4, F#4, E4) followed by a quarter note (D4).
- Synth. (bottom):** Treble clef. Measures 73-75 are whole rests. Measure 76 features a descending eighth-note triplet (G4, F#4, E4) followed by a quarter note (D4).
- El. B.:** Bass clef. Measures 73-75 contain eighth-note patterns: G2 (half), A2 (quarter), B2 (quarter), C3 (half), D3 (quarter), E3 (quarter), F3 (quarter), G3 (half). Measure 76 is a whole rest.
- D. Set:** Bass clef. Measures 73-75 contain eighth-note patterns: G2 (half), A2 (quarter), B2 (quarter), C3 (half), D3 (quarter), E3 (quarter), F3 (quarter), G3 (half). Measure 76 is a whole rest.

77

Pno.

Hch.

Br.

Vlas.

Fl.

Synth.

El. Guit.

Hm. Org.

Synth.

El. B.

D. Set

The musical score for page 22, starting at measure 77, is arranged for a large ensemble. The instruments and their parts are as follows:

- Pno. (Piano):** Features complex, dense chordal textures in the right hand, often with arpeggiated figures, and sustained chords in the left hand.
- Hch. (Harp):** Remains silent throughout the measures shown.
- Br. (Brass):** Remains silent throughout the measures shown.
- Vlas. (Violas):** Remains silent throughout the measures shown.
- Fl. (Flute):** Plays a melodic line with eighth and sixteenth notes, including some grace notes.
- Synth. (Synthesizer):** Mirrors the Piano part with complex, dense chordal textures.
- El. Guit. (Electric Guitar):** Plays a complex, dense chordal texture, often with arpeggiated figures.
- Hm. Org. (Hammond Organ):** Features a melodic line in the right hand and a supporting bass line in the left hand, including some grace notes.
- Synth. (Synthesizer):** Features a melodic line in the right hand and a supporting bass line in the left hand.
- El. B. (Electric Bass):** Plays a steady eighth-note bass line.
- D. Set (Drums):** Features a steady eighth-note bass line and a complex, dense pattern of eighth and sixteenth notes in the snare and cymbal parts.

81

The musical score for measures 81-84 is arranged in a multi-staff format. The instruments and their parts are as follows:

- Pno.:** Features a complex texture with dense chords and arpeggiated patterns in both the treble and bass staves.
- Hch.:** Remains silent throughout the measures.
- Br.:** Remains silent throughout the measures.
- Vlas.:** Remains silent throughout the measures.
- Fl.:** Plays a melodic line in the treble staff, starting with a grace note and featuring eighth and sixteenth notes.
- Synth.:** Mirrors the Pno. part with dense chords and arpeggiated patterns.
- El. Guit.:** Plays a melodic line in the treble staff, featuring eighth and sixteenth notes.
- Hm. Org.:** Consists of two staves. The upper staff plays a melodic line with grace notes, while the lower staff provides a steady bass accompaniment.
- Synth.:** Consists of two staves. The upper staff is silent, while the lower staff plays a melodic line with grace notes.
- El. B.:** Plays a melodic line in the bass staff, featuring eighth and sixteenth notes.
- D. Set:** Features a complex pattern of eighth and sixteenth notes in the bass staff, with 'x' marks indicating specific rhythmic events.

85

Pno.

Hch.

Br.

Vlas.

Fl.

Synth.

El. Guit.

Hm. Org.

Synth.

El. B.

D. Set

The musical score for page 24, starting at measure 85, is arranged for a large ensemble. The instruments and their parts are as follows:

- Pno.:** Features complex, multi-voiced chordal textures in the right hand, often with arpeggiated figures, and sustained chords in the left hand.
- Hch.:** Remains silent throughout the measures shown.
- Br.:** Remains silent throughout the measures shown.
- Vlas.:** Remains silent throughout the measures shown.
- Fl.:** Plays a melodic line with eighth and sixteenth notes, including some grace notes.
- Synth.:** Mirrors the Piano part with complex, multi-voiced chordal textures.
- El. Guit.:** Plays a dense, multi-voiced chordal texture, often with a tremolo effect.
- Hm. Org.:** The upper manual plays a melodic line with grace notes, while the lower manual provides a steady bass line with eighth notes.
- Synth.:** The upper staff is silent, while the lower staff plays a steady bass line with eighth notes.
- El. B.:** Plays a steady bass line with eighth notes.
- D. Set:** Provides a steady rhythmic foundation with a pattern of eighth notes and rests.



89

Pno.

Hch.

Br.

Vlas.

Fl.

Synth.

El. Guit.

Hm. Org.

Synth.

El. B.

D. Set

The musical score for page 25, starting at measure 89, is arranged for a large ensemble. The instruments and their parts are as follows:

- Pno. (Piano):** Plays complex, dense chordal textures in both treble and bass clefs.
- Hch. (Harp):** Remains silent throughout the measures shown.
- Br. (Brass):** Remains silent throughout the measures shown.
- Vlas. (Violas):** Plays sustained, low-register notes.
- Fl. (Flute):** Features a melodic line with eighth-note patterns and a long, sustained note in the final measure.
- Synth. (Synthesizer):** Plays complex, dense chordal textures, mirroring the Piano part.
- El. Guit. (Electric Guitar):** Plays a melodic line with eighth-note patterns and a long, sustained note in the final measure.
- Hm. Org. (Harmonium Organ):** Provides a simple accompaniment with eighth-note patterns in both hands.
- Synth. (Synthesizer):** Provides a simple accompaniment with eighth-note patterns in both hands.
- El. B. (Electric Bass):** Features a melodic line with eighth-note patterns and a long, sustained note in the final measure.
- D. Set (Double Bass):** Represented by a drum kit notation, featuring various rhythmic patterns including eighth notes, sixteenth notes, and rests.

93

Pno.

Hch.

Br.

Vlas.

Fl.

Synth.

El. Guit.

Hm. Org.

Synth.

El. B.

D. Set

96

Pno.

Hch.

Br.

Vlas.

Fl.

Synth.

El. Guit.

Hm. Org.

Synth.

El. B.

D. Set

100

The musical score for page 28, measures 100-103, features the following parts:

- Pno.:** Treble clef, playing chords and arpeggiated patterns.
- Hch.:** Treble clef, playing sustained chords.
- Br.:** Bass clef, playing a melodic line with eighth notes.
- Vlas.:** Bass clef, playing sustained chords.
- Fl.:** Treble clef, playing a melodic line with eighth notes.
- Synth.:** Treble clef, playing chords and arpeggiated patterns.
- El. Guit.:** Treble clef, playing chords and arpeggiated patterns.
- Hm. Org.:** Two staves (bass and treble), playing a melodic line with eighth notes.
- Synth.:** Two staves (bass and treble), playing sustained chords.
- El. B.:** Bass clef, playing a melodic line with eighth notes.
- D. Set:** Two staves (bass and treble), playing a drum pattern with eighth notes.

104

The musical score for measures 104-107 is arranged in a multi-staff format. The instruments and their parts are as follows:

- Pno.:** Features a complex texture with chords and arpeggiated patterns in both treble and bass staves.
- Hch.:** Remains silent throughout the measures.
- Br.:** Plays a melodic line with eighth and sixteenth notes, including some grace notes.
- Vlas.:** Remains silent throughout the measures.
- Fl.:** Plays a melodic line with eighth and sixteenth notes, including some grace notes.
- Synth.:** Features a complex texture with chords and arpeggiated patterns in both treble and bass staves.
- El. Guit.:** Features a complex texture with chords and arpeggiated patterns in both treble and bass staves.
- Hm. Org.:** Consists of two staves. The upper staff plays a melodic line with eighth and sixteenth notes, including some grace notes. The lower staff plays a bass line with eighth and sixteenth notes.
- Synth.:** Consists of two staves. The upper staff plays a melodic line with eighth and sixteenth notes, including some grace notes. The lower staff plays a bass line with eighth and sixteenth notes.
- El. B.:** Plays a melodic line with eighth and sixteenth notes, including some grace notes.
- D. Set:** Features a complex texture with chords and arpeggiated patterns in both treble and bass staves.

108

Pno.

Hch.

Br.

Vlas.

Fl.

Synth.

El. Guit.

Hm. Org.

Synth.

El. B.

D. Set

Detailed description: This musical score page contains measures 108 through 111. The instruments and their parts are as follows: Piano (Pno.) plays a complex chordal texture with many beamed sixteenth notes. Harp (Hch.) is silent. Brass (Br.) has a melodic line with eighth notes and quarter notes. Violas (Vlas.) are silent. Flute (Fl.) has a long, sustained note in the first measure, followed by a rest and then a few notes. Synthesizer (Synth.) plays a similar chordal texture to the piano. Electric Guitar (El. Guit.) plays a dense, fast-moving chordal pattern. Harmonium Organ (Hm. Org.) has two staves; the upper staff has a melodic line with sharps and naturals, while the lower staff has a bass line with naturals and flats. Another Synthesizer (Synth.) part has two staves, with the upper staff playing a simple melodic line and the lower staff playing a bass line. Electric Bass (El. B.) plays a steady eighth-note bass line. Drums (D. Set) are shown on a single staff with a variety of rhythmic patterns, including eighth notes, sixteenth notes, and rests.

112

The musical score for page 31, starting at measure 112, features the following instruments and parts:

- Pno.:** Piano part with complex chordal textures and melodic lines in both staves.
- Hch.:** Horn part, currently resting.
- Br.:** Trumpet part with a melodic line.
- Vlas.:** Violas part, currently resting.
- Fl.:** Flute part with a melodic line.
- Synth.:** Synthesizer part with complex chordal textures and melodic lines in both staves.
- El. Guit.:** Electric Guitar part with complex chordal textures and melodic lines in both staves.
- Hm. Org.:** Harmonium Organ part with a melodic line in the right hand and a bass line in the left hand.
- Synth.:** Another Synthesizer part, currently resting.
- El. B.:** Electric Bass part with a melodic line.
- D. Set:** Drum Set part with a complex rhythmic pattern.

116

Pno.

Hch.

Br.

Vlas.

Fl.

Synth.

El. Guit.

Hm. Org.

Synth.

El. B.

D. Set

Detailed description: This musical score page contains measures 116 through 119. The instruments and their parts are as follows: Piano (Pno.) plays a complex chordal texture with many beamed sixteenth notes. Harp (Hch.) has whole rests. Brass (Br.) plays a melodic line with eighth notes and a slur. Violas (Vlas.) have whole rests. Flute (Fl.) plays a melodic line with eighth notes and a slur. Synthesizer (Synth.) plays a complex chordal texture similar to the piano. Electric Guitar (El. Guit.) plays a complex chordal texture with many beamed sixteenth notes. Harmonium Organ (Hm. Org.) has two staves; the upper staff plays a melodic line with eighth notes and a slur, while the lower staff plays a bass line with eighth notes. Another Synthesizer (Synth.) has two staves, both playing a simple harmonic pattern of quarter notes. Electric Bass (El. B.) plays a steady eighth-note bass line. Drums (D. Set) are represented by a single staff with 'x' marks indicating hits on various drums.



120

The musical score for measures 120-123 features the following parts:

- Pno.:** Treble and bass staves. Measure 120 has a complex chordal texture with many beamed notes. Measure 121 has a similar texture. Measure 122 has a more open texture with fewer notes. Measure 123 has a similar texture to 120.
- Hch.:** Treble staff. All measures contain whole rests.
- Br.:** Treble staff. Measure 120 has a melodic line starting on G4. Measure 121 has a melodic line starting on A4. Measure 122 has a melodic line starting on B4. Measure 123 has a melodic line starting on C5.
- Vlas.:** Bass staff. All measures contain whole rests.
- Fl.:** Treble staff. Measure 120 has a melodic line starting on G4. Measure 121 has a melodic line starting on A4. Measure 122 has a melodic line starting on B4. Measure 123 has a melodic line starting on C5.
- Synth.:** Treble and bass staves. Measure 120 has a complex chordal texture with many beamed notes. Measure 121 has a similar texture. Measure 122 has a more open texture with fewer notes. Measure 123 has a similar texture to 120.
- El. Guit.:** Treble staff. Measure 120 has a complex chordal texture with many beamed notes. Measure 121 has a similar texture. Measure 122 has a more open texture with fewer notes. Measure 123 has a similar texture to 120.
- Hm. Org.:** Treble and bass staves. Measure 120 has a melodic line starting on G2. Measure 121 has a melodic line starting on A2. Measure 122 has a melodic line starting on B2. Measure 123 has a melodic line starting on C3.
- Synth.:** Treble and bass staves. Measure 120 has a melodic line starting on G4. Measure 121 has a melodic line starting on A4. Measure 122 has a melodic line starting on B4. Measure 123 has a melodic line starting on C5.
- El. B.:** Bass staff. Measure 120 has a melodic line starting on G2. Measure 121 has a melodic line starting on A2. Measure 122 has a melodic line starting on B2. Measure 123 has a melodic line starting on C3.
- D. Set:** Drum staff. Measure 120 has a complex rhythm with many beamed notes. Measure 121 has a similar texture. Measure 122 has a more open texture with fewer notes. Measure 123 has a similar texture to 120.

124

Pno.

Hch.

Br.

Vlas.

Fl.

Synth.

El. Guit.

Hm. Org.

Synth.

El. B.

D. Set

Detailed description: This musical score page contains measures 124 through 127. The instruments and their parts are as follows: Piano (Pno.) plays a complex chordal texture with many beamed sixteenth notes. Harp (Hch.) has whole rests. Brass (Br.) plays a melodic line with eighth notes and quarter notes. Violas (Vlas.) have whole rests. Flute (Fl.) plays a melodic line with eighth and sixteenth notes. Synthesizer (Synth.) plays a complex chordal texture similar to the piano. Electric Guitar (El. Guit.) plays a complex chordal texture with many beamed sixteenth notes. Harmonium Organ (Hm. Org.) has two staves; the upper staff plays a melodic line with eighth notes and quarter notes, while the lower staff plays a bass line with eighth notes. Another Synthesizer (Synth.) has two staves, both playing whole notes. Electric Bass (El. B.) plays a steady eighth-note bass line. Drums (D. Set) are shown with a snare drum staff and a bass drum staff, featuring a pattern of eighth notes and rests.

128

The musical score for measures 128-131 features the following parts:

- Pno.:** Treble and bass staves with complex chordal textures and melodic lines.
- Hch.:** Horn part with whole rests.
- Br.:** Trumpet part with eighth-note and quarter-note patterns.
- Vlas.:** Violoncello part with whole rests.
- Fl.:** Flute part with a single note in measure 128 and whole rests thereafter.
- Synth.:** Synthesizer part with complex chordal textures.
- El. Guit.:** Electric guitar part with complex chordal textures.
- Hm. Org.:** Harmonium Organ part with two staves, featuring a mix of whole and half notes.
- Synth.:** Second synthesizer part with two staves, featuring a simple melodic line.
- El. B.:** Electric bass part with eighth-note patterns.
- D. Set:** Drum set part with a mix of eighth and sixteenth notes, including accents.