

♩ = 140

Bass Synthesizer, Wide Bass (MIDI)



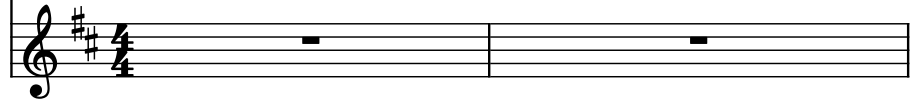
Bass Synthesizer, Bass 2 (MIDI)



Hammond Organ, Organ (MIDI)



Saw Synthesizer, Lead (MIDI)



3

Synth.



Synth.



Hm. Org.



Synth.



6

Synth.



Synth.



Hm. Org.



Synth.



8

Synth.

14

Synth. 

Synth. 

Hm. Org. 

Synth. 

16

Synth. 

Synth. 

Hm. Org. 

Synth. 

18

Synth. 

Synth. 

Hm. Org. 

Synth. 

20

Synth.

Synth.

Hm. Org.

Synth.

22

Synth.

Synth.

Hm. Org.

Synth.

24

Synth.

Synth.

Hm. Org.

Synth.