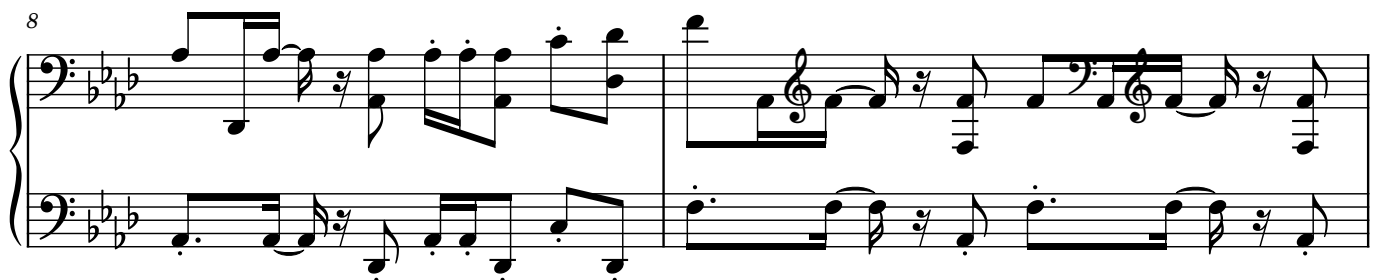


♩ = 149



12



14



16

The image displays a musical score for a piano piece, consisting of three systems of staves. The first system (measures 12-15) features a treble and bass staff with a key signature of three flats (B-flat, E-flat, A-flat) and a 4/4 time signature. The melody in the treble staff begins with a half note G3, followed by a quarter note A3, and then a series of eighth notes. The bass staff provides a harmonic accompaniment with a steady eighth-note pattern. The second system (measures 16-19) continues the melodic and harmonic development, with the treble staff featuring more complex rhythmic patterns including sixteenth notes. The third system (measures 20-23) concludes the piece with a final cadence, marked by a double bar line at the end of measure 23.