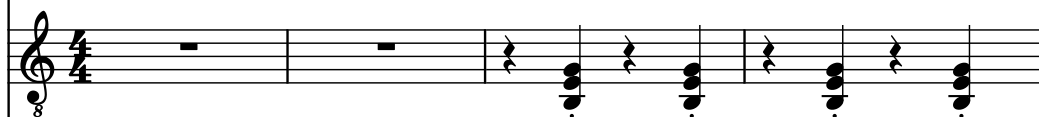


♩ = 128

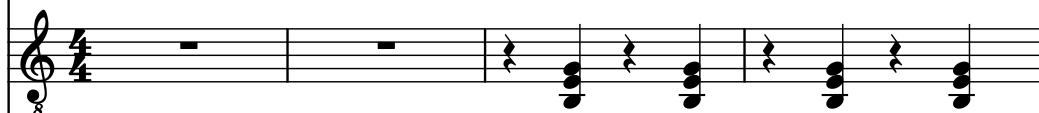
Acoustic Guitar, untitled



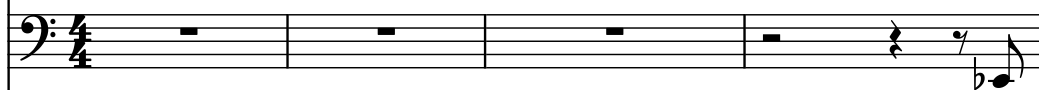
Electric Guitar



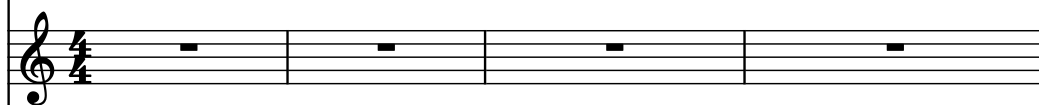
Electric Guitar



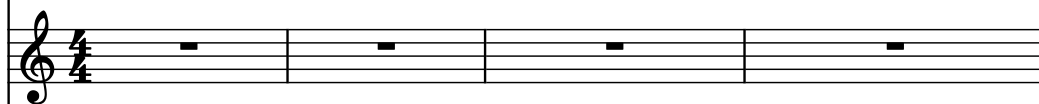
Bass Guitar



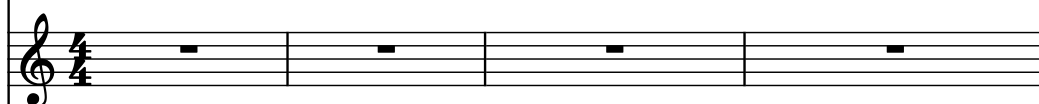
Piano



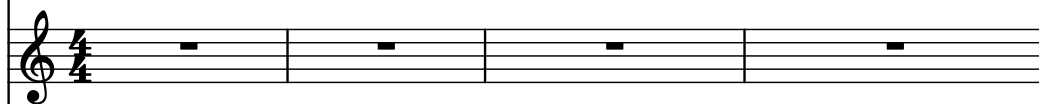
Tuned Klaxon Horns



Xylophone



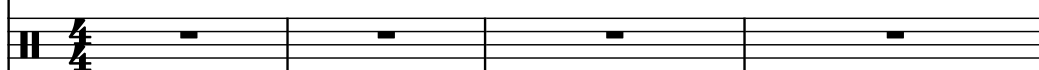
Hand Bells



Pad Synthesizer



Drumset



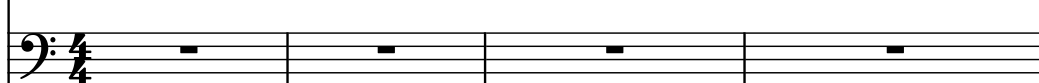
Strings



Horn in C alto



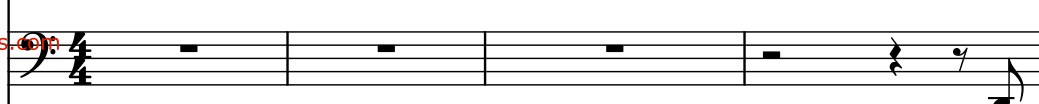
Men



Recorder



Timpani



Pdf downloaded from www.midicities.com
 Timp. 

6

This musical score page contains measures 6, 7, and 8 of a piece for a 13-piece ensemble. The instruments are arranged vertically from top to bottom: Guit., El. Guit., El. Guit., B. Guit., Pno., Tn. Klx. Hns., Xyl., Ha. Be., Synth., D. Set, St., C Hn., M., and Rec. The score is written in standard musical notation with various staves and clefs. Measure 6 shows a variety of notes and rests across the instruments. Measure 7 features a complex drum set pattern with many 'x' marks indicating cymbal hits. Measure 8 continues the melodic and harmonic development. The page is numbered '6' at the top left and '3' at the top right.

Guit.

El. Guit.

El. Guit.

B. Guit.

Pno.

Tn. Klx. Hns.

Xyl.

Ha. Be.

Synth.

D. Set

St.

C Hn.

M.

Rec.

Timp.

7

Guit.

El. Guit.

El. Guit.

B. Guit.

Pno.

Tn. Klx. Hns.

Xyl.

Ha. Be.

Synth.

D. Set

St.

C Hn.

M.

Rec.

Timp.

8

8

Guit.

El. Guit.

El. Guit.

B. Guit.

Pno.

Tn. Klx. Hns.

Xyl.

Ha. Be.

Synth.

D. Set

St.

C Hn.

M.

Rec.

Timp.

Downloaded from www.midcities.com

9

Guit.

El. Guit.

El. Guit.

B. Guit.

Pno.

Tn. Klx. Hns.

Xyl.

Ha. Be.

Synth.

D. Set

St.

C Hn.

M.

Rec.

Timp.

Measure 9: Guitar solo with a long sustain. Electric Guitars play a chord. Bass Guitar plays a single note. Piano, Tenor Saxophone, Clarinet, Flute, Harp, Synthesizer, Strings, Horns, Music, Recorder, and Timpani are silent.

Measure 10: Guitar solo continues. Electric Guitars play a chord. Bass Guitar plays a single note. Piano, Tenor Saxophone, Clarinet, Flute, Harp, Synthesizer, Strings, Horns, Music, Recorder, and Timpani are silent.

Measure 11: Guitar solo continues. Electric Guitars play a chord. Bass Guitar plays a single note. Piano, Tenor Saxophone, Clarinet, Flute, Harp, Synthesizer, Strings, Horns, Music, Recorder, and Timpani are silent.

Measure 12: Guitar solo continues. Electric Guitars play a chord. Bass Guitar plays a single note. Piano, Tenor Saxophone, Clarinet, Flute, Harp, Synthesizer, Strings, Horns, Music, Recorder, and Timpani are silent.

10

Guit.

El. Guit.

El. Guit.

B. Guit.

Pno.

Tn. Klx. Hns.

Xyl.

Ha. Be.

Synth.

D. Set

St.

C Hn.

M.

Rec.

Timp.

Pdf downloaded from www.midicities.com
 Timp. 

12

Guit.

El. Guit.

El. Guit.

B. Guit.

Pno.

Tn. Klx. Hns.

Xyl.

Ha. Be.

Synth.

D. Set

St.

C Hn.

M.

Rec.

Timp.

13

Guit.

El. Guit.

El. Guit.

B. Guit.

Pno.

Tn. Klx. Hns.

Xyl.

Ha. Be.

Synth.

D. Set

St.

C Hn.

M.

Rec.

Timp.

14

Guit.

El. Guit.

El. Guit.

B. Guit.

Pno.

Tn. Klx. Hns.

Xyl.

Ha. Be.

Synth.

D. Set

St.

C Hn.

M.

Rec.

Timp.

Downloaded from www.midcities.com

15

Guit.

El. Guit.

El. Guit.

B. Guit.

Pno.

Tn. Klx. Hns.

Xyl.

Ha. Be.

Synth.

D. Set

St.

C Hn.

M.

Rec.

Timp.

15

16

16

Guit.

El. Guit.

El. Guit.

B. Guit.

Pno.

Tn. Klx. Hns.

Xyl.

Ha. Be.

Synth.

D. Set

St.

C Hn.

M.

Rec.

Timp.

Pdf downloaded from www.midicities.com
 Timp. 

18

Guit. 8

El. Guit. 8

El. Guit. 8

B. Guit.

Pno.

Tn. Klx. Hns.

Xyl.

Ha. Be.

Synth.

D. Set

St.

C Hn.

M.

Rec.

Timp.

8

Pdf downloaded from www.midicities.com
 Timp. 

20

Guit.

El. Guit.

El. Guit.

B. Guit.

Pno.

Tn. Klx. Hns.

Xyl.

Ha. Be.

Synth.

D. Set

St.

C Hn.

M.

Rec.

Timp.

20

21

Pdf downloaded from www.midicities.com
 Timp. 

22

Guit.

El. Guit.

El. Guit.

B. Guit.

Pno.

Tn. Klx. Hns.

Xyl.

Ha. Be.

Synth.

D. Set

St.

C Hn.

M.

Rec.

Timp.

Downloaded from www.midcities.com

23

Guit.

El. Guit.

El. Guit.

B. Guit.

Pno.

Tn. Klx. Hns.

Xyl.

Ha. Be.

Synth.

D. Set

St.

C Hn.

M.

Rec.

Timp.

23

Timp.

25

Guit.

El. Guit.

El. Guit.

B. Guit.

Pno.

Tn. Klx. Hns.

Xyl.

Ha. Be.

Synth.

D. Set

St.

C Hn.

M.

Rec.

Timp.

The musical score for page 22, measures 25-28, is arranged for a large ensemble. The instruments and their parts are as follows:

- Guit.**: Treble clef, 8va. Measures 25-28 show a melodic line with eighth and sixteenth notes, and a long sustain line.
- El. Guit.**: Treble clef, 8va. Measures 25-28 show a melodic line with eighth and sixteenth notes, and a long sustain line.
- El. Guit.**: Treble clef, 8va. Measures 25-28 show a melodic line with eighth and sixteenth notes, and a long sustain line.
- B. Guit.**: Bass clef. Measures 25-28 show a melodic line with eighth and sixteenth notes, and a long sustain line.
- Pno.**: Treble clef. Measures 25-28 show a melodic line with eighth and sixteenth notes, and a long sustain line.
- Tn. Klx. Hns.**: Treble clef. Measures 25-28 show a melodic line with eighth and sixteenth notes, and a long sustain line.
- Xyl.**: Treble clef. Measures 25-28 show a melodic line with eighth and sixteenth notes, and a long sustain line.
- Ha. Be.**: Treble clef. Measures 25-28 show a melodic line with eighth and sixteenth notes, and a long sustain line.
- Synth.**: Treble clef. Measures 25-28 show a melodic line with eighth and sixteenth notes, and a long sustain line.
- D. Set**: Treble clef. Measures 25-28 show a melodic line with eighth and sixteenth notes, and a long sustain line.
- St.**: Treble clef. Measures 25-28 show a melodic line with eighth and sixteenth notes, and a long sustain line.
- C Hn.**: Treble clef. Measures 25-28 show a melodic line with eighth and sixteenth notes, and a long sustain line.
- M.**: Bass clef. Measures 25-28 show a melodic line with eighth and sixteenth notes, and a long sustain line.
- Rec.**: Treble clef. Measures 25-28 show a melodic line with eighth and sixteenth notes, and a long sustain line.
- Timp.**: Bass clef. Measures 25-28 show a melodic line with eighth and sixteenth notes, and a long sustain line.

26

Guit.

El. Guit.

El. Guit.

B. Guit.

Pno.

Tn. Klx. Hns.

Xyl.

Ha. Be.

Synth.

D. Set

St.

C Hn.

M.

Rec.

Timp.

28

Guit.

El. Guit.

El. Guit.

B. Guit.

Pno.

Tn. Klx. Hns.

Xyl.

Ha. Be.

Synth.

D. Set

St.

C Hn.

M.

Rec.

Timp.

Downloaded from www.midicities.com

Guit.

El. Guit.

El. Guit.

B. Guit.

Pno.

Tn. Klx. Hns.

Xyl.

Ha. Be.

Synth.

D. Set

St.

C Hn.

M.

Rec.

Downloaded from www.midcities.com

31

Guit.

El. Guit.

El. Guit.

B. Guit.

Pno.

Tn. Klx. Hns.

Xyl.

Ha. Be.

Synth.

D. Set

St.

C Hn.

M.

Rec.

Timp.

33

Guit.

El. Guit.

El. Guit.

B. Guit.

Pno.

Tn. Klx. Hns.

Xyl.

Ha. Be.

Synth.

D. Set

St.

C Hn.

M.

Rec.

Timp.

33

34

Guit.

El. Guit.

El. Guit.

B. Guit.

Pno.

Tn. Klx. Hns.

Xyl.

Ha. Be.

Synth.

D. Set

St.

C Hn.

M.

Rec.

Timp.

Timp.

36

Guit.

El. Guit.

El. Guit.

B. Guit.

Pno.

Tn. Klx. Hns.

Xyl.

Ha. Be.

Synth.

D. Set

St.

C Hn.

M.

Rec.

Timp.

Timp.

Pdf downloaded from www.midicities.com
 Timp. 

39

Guit.

El. Guit.

El. Guit.

B. Guit.

Pno.

Tn. Klx. Hns.

Xyl.

Ha. Be.

Synth.

D. Set

St.

C Hn.

M.

Rec.

Timp.

39

40

41

42

43

44

45

46

47

48

49

50

51

52

53

54

55

56

57

58

59

60

61

62

63

64

65

66

67

68

69

70

71

72

73

74

75

76

77

78

79

80

81

82

83

84

85

86

87

88

89

90

91

92

93

94

95

96

97

98

99

100

101

102

103

104

105

106

107

108

109

110

111

112

113

114

115

116

117

118

119

120

121

122

123

124

125

126

127

128

129

130

131

132

133

134

135

136

137

138

139

140

141

142

143

144

145

146

147

148

149

150

151

152

153

154

155

156

157

158

159

160

161

162

163

164

165

166

167

168

169

170

171

172

173

174

175

176

177

178

179

180

181

182

183

184

185

186

187

188

189

190

191

192

193

194

195

196

197

198

199

200

201

202

203

204

205

206

207

208

209

210

211

212

213

214

215

216

217

218

219

220

221

222

223

224

225

226

227

228

229

230

231

232

233

234

235

236

237

238

239

240

241

242

243

244

245

246

247

248

249

250

251

252

253

254

255

256

257

258

259

260

261

262

263

264

265

266

267

268

269

270

271

272

273

274

275

276

277

278

279

280

281

282

283

284

285

286

287

288

289

290

291

292

293

294

295

296

297

298

299

300

301

302

303

304

305

306

307

308

309

310

311

312

313

314

315

316

317

318

319

320

321

322

323

324

325

326

327

328

329

330

331

332

333

334

335

336

337

338

339

340

341

342

343

344

345

346

347

348

349

350

351

352

353

354

355

356

357

358

359

360

361

362

363

364

365

366

367

368

369

370

371

372

373

374

375

376

377

378

379

380

381

382

383

384

385

386

387

388

389

390

391

392

393

394

395

396

397

398

399

400

401

402

403

404

405

406

407

408

409

410

411

412

413

414

415

416

417

418

419

420

421

422

423

424

425

426

427

428

429

430

431

432

433

434

435

436

437

438

439

440

441

442

443

444

445

446

447

448

449

450

451

452

453

454

455

456

457

458

459

460

461

462

463

464

465

466

467

468

469

470

471

472

473

474

475

476

477

478

479

480

481

482

483

484

485

486

487

488

489

490

491

492

493

494

495

496

497

498

499

500

501

502

503

504

505

506

507

508

509

510

511

512

513

514

515

516

517

518

519

520

521

522

523

524

525

526

527

528

529

530

531

532

533

534

535

536

537

538

539

540

541

542

543

544

545

546

547

548

549

550

551

552

553

554

555

556

557

558

559

560

561

562

563

564

565

566

567

568

569

570

571

572

573

574

575

576

577

578

579

580

581

582

583

584

585

586

587

588

589

590

591

592

593

594

595

596

597

598

599

600

601

602

603

604

605

606

607

608

609

610

611

612

613

614

615

616

617

618

619

620

621

622

623

624

625

626

627

628

629

630

631

632

633

634

635

636

637

638

639

640

641

642

643

644

645

646

647

648

649

650

651

652

653

654

655

656

657

658

659

660

661

662

663

664

665

666

667

668

669

670

671

672

673

674

675

676

677

678

679

680

681

682

683

684

685

686

687

688

689

690

691

692

693

694

695

696

697

698

699

700

701

702

703

704

705

706

707

708

709

710

711

712

713

714

715

716

717

718

719

720

721

722

723

724

725

726

727

728

729

730

731

732

733

734

735

736

737

738

739

740

741

742

743

744

745

746

747

748

749

750

751

752

753

754

755

756

757

758

759

760

761

762

763

764

765

766

767

768

769

770

771

772

773

774

775

776

777

778

779

780

781

782

783

784

785

786

787

788

789

790

791

792

793

794

795

796

797

798

799

800

801

802

803

804

805

806

807

808

809

810

811

812

813

814

815

816

817

818

819

820

821

822

823

824

825

826

827

828

829

830

831

832

833

834

835

836

837

838

839

840

841

842

843

844

845

846

847

848

849

850

851

852

853

854

855

856

857

858

859

860

861

862

863

864

865

866

867

868

869

870

871

872

873

874

875

876

877

878

879

880

881

882

883

884

885

886

887

888

889

890

891

892

893

894

895

896

897

898

899

900

901

902

903

904

905

906

907

908

909

910

911

912

913

914

915

916

917

918

919

920

921

922

923

924

925

926

927

928

929

930

931

932

933

934

935

936

937

938

939

940

941

942

943

944

945

946

947

948

949

950

951

952

953

954

955

956

957

958

959

960

961

962

963

964

965

966

967

968

969

970

971

972

973

974

975

976

977

978

979

980

981

982

983

984

985

986

987

988

989

990

991

992

993

994

995

996

997

998

999

1000

Pdf downloaded from www.midicities.com
 Timp. 

41

Guit.

El. Guit.

El. Guit.

B. Guit.

Pno.

Tn. Klx. Hns.

Xyl.

Ha. Be.

Synth.

D. Set

St.

C Hn.

M.

Rec.

Timp.

42

Guit.

El. Guit.

El. Guit.

B. Guit.

Pno.

Tn. Klx. Hns.

Xyl.

Ha. Be.

Synth.

D. Set

St.

C Hn.

M.

Rec.

Timp.

Measure 42: Guitar (treble clef, 8va) plays a series of eighth notes. Electric Guitar (treble clef, 8va) and Bass Guitar (bass clef) are silent. Piano (treble clef) plays a series of eighth notes. Tenor/Clarinet/Horn (treble clef) plays a series of eighth notes. Xylophone (treble clef) and Harp/Bell (treble clef) are silent. Synthesizer (treble clef) is silent. Drums (bass clef) play a series of eighth notes. Snare (treble clef) is silent. Conga/Horn (treble clef) is silent. Maracas (bass clef) play a series of eighth notes. Recorder (treble clef) is silent. Timpani (bass clef) is silent.

Measure 43: Guitar (treble clef, 8va) plays a series of eighth notes. Electric Guitar (treble clef, 8va) and Bass Guitar (bass clef) are silent. Piano (treble clef) plays a series of eighth notes. Tenor/Clarinet/Horn (treble clef) plays a series of eighth notes. Xylophone (treble clef) and Harp/Bell (treble clef) are silent. Synthesizer (treble clef) is silent. Drums (bass clef) play a series of eighth notes. Snare (treble clef) is silent. Conga/Horn (treble clef) is silent. Maracas (bass clef) play a series of eighth notes. Recorder (treble clef) is silent. Timpani (bass clef) is silent.

43

Guit.

El. Guit.

El. Guit.

B. Guit.

Pno.

Tn. Klx. Hns.

Xyl.

Ha. Be.

Synth.

D. Set

St.

C Hn.

M.

Rec.

Timp.

44

Guit.

El. Guit.

El. Guit.

B. Guit.

Pno.

Tn. Klx. Hns.

Xyl.

Ha. Be.

Synth.

D. Set

St.

C Hn.

M.

Rec.

Timp.

44

45

46

47

45

Guit.

El. Guit.

El. Guit.

B. Guit.

Pno.

Tn. Klx. Hns.

Xyl.

Ha. Be.

Synth.

D. Set

St.

C Hn.

M.

Rec.

Timp.

40

47

Guit.

El. Guit.

El. Guit.

B. Guit.

Pno.

Tn. Klx. Hns.

Xyl.

Ha. Be.

Synth.

D. Set

St.

C Hn.

M.

Rec.

Timp.

Downloaded from www.midicities.com

49

Guit.

El. Guit.

El. Guit.

B. Guit.

Pno.

Tn. Klx. Hns.

Xyl.

Ha. Be.

Synth.

D. Set

St.

C Hn.

M.

Rec.

8

8

8

3

3

8

50

Guit.

El. Guit.

El. Guit.

B. Guit.

Pno.

Tn. Klx. Hns.

Xyl.

Ha. Be.

Synth.

D. Set

St.

C Hn.

M.

Rec.

Timp.

Measure 50: Guit. (8) plays a sequence of eighth notes (F4, G4, A4, B4) tied to the start of measure 51. El. Guit. (8) plays a sequence of eighth notes (F4, G4, A4, B4) tied to the start of measure 51. B. Guit. (8) plays a sequence of eighth notes (F3, G3, A3, B3) tied to the start of measure 51. Pno. (8) plays a sequence of eighth notes (F4, G4, A4, B4) tied to the start of measure 51. Tn. Klx. Hns. (8) plays a sequence of eighth notes (F4, G4, A4, B4) tied to the start of measure 51. Xyl. (8) plays a sequence of eighth notes (F4, G4, A4, B4) tied to the start of measure 51. Ha. Be. (8) plays a sequence of eighth notes (F4, G4, A4, B4) tied to the start of measure 51. Synth. (8) plays a sequence of eighth notes (F4, G4, A4, B4) tied to the start of measure 51. D. Set (8) plays a sequence of eighth notes (F4, G4, A4, B4) tied to the start of measure 51. St. (8) plays a sequence of eighth notes (F4, G4, A4, B4) tied to the start of measure 51. C Hn. (8) plays a sequence of eighth notes (F4, G4, A4, B4) tied to the start of measure 51. M. (8) plays a sequence of eighth notes (F4, G4, A4, B4) tied to the start of measure 51. Rec. (8) plays a sequence of eighth notes (F4, G4, A4, B4) tied to the start of measure 51. Timp. (8) plays a sequence of eighth notes (F4, G4, A4, B4) tied to the start of measure 51.

Measure 51: Guit. (8) continues the sequence of eighth notes (F4, G4, A4, B4). El. Guit. (8) continues the sequence of eighth notes (F4, G4, A4, B4). B. Guit. (8) continues the sequence of eighth notes (F3, G3, A3, B3). Pno. (8) continues the sequence of eighth notes (F4, G4, A4, B4). Tn. Klx. Hns. (8) continues the sequence of eighth notes (F4, G4, A4, B4). Xyl. (8) continues the sequence of eighth notes (F4, G4, A4, B4). Ha. Be. (8) continues the sequence of eighth notes (F4, G4, A4, B4). Synth. (8) continues the sequence of eighth notes (F4, G4, A4, B4). D. Set (8) continues the sequence of eighth notes (F4, G4, A4, B4). St. (8) continues the sequence of eighth notes (F4, G4, A4, B4). C Hn. (8) continues the sequence of eighth notes (F4, G4, A4, B4). M. (8) continues the sequence of eighth notes (F4, G4, A4, B4). Rec. (8) continues the sequence of eighth notes (F4, G4, A4, B4). Timp. (8) continues the sequence of eighth notes (F4, G4, A4, B4).

51

Guit.

El. Guit.

El. Guit.

B. Guit.

Pno.

Tn. Klx. Hns.

Xyl.

Ha. Be.

Synth.

D. Set

St.

C Hn.

M.

Rec.

Timp.

43

3

3

53

Guit.

El. Guit.

El. Guit.

B. Guit.

Pno.

Tn. Klx. Hns.

Xyl.

Ha. Be.

Synth.

D. Set

St.

C Hn.

M.

Rec.

Timp.

55

Guit.

El. Guit.

El. Guit.

B. Guit.

Pno.

Tn. Klx. Hns.

Xyl.

Ha. Be.

Synth.

D. Set

St.

C Hn.

M.

Rec.

Timb.

The musical score for page 45, measures 55-56, is a complex orchestration. The Guitar part (measures 55-56) features a melodic line with a triplet of eighth notes in measure 55 and a half note in measure 56. The Electric Guitar part (measures 55-56) features a melodic line with a triplet of eighth notes in measure 55 and a half note in measure 56. The Bass Guitar part (measures 55-56) features a melodic line with a half note in measure 55 and a half note in measure 56. The Piano part (measures 55-56) features a melodic line with a half note in measure 55 and a half note in measure 56. The Tenor Saxophone part (measures 55-56) features a melodic line with a half note in measure 55 and a half note in measure 56. The Clarinet part (measures 55-56) features a melodic line with a half note in measure 55 and a half note in measure 56. The Flute part (measures 55-56) features a melodic line with a half note in measure 55 and a half note in measure 56. The Harp part (measures 55-56) features a melodic line with a half note in measure 55 and a half note in measure 56. The Synthesizer part (measures 55-56) features a melodic line with a half note in measure 55 and a half note in measure 56. The Drums part (measures 55-56) features a melodic line with a half note in measure 55 and a half note in measure 56. The Strings part (measures 55-56) features a melodic line with a half note in measure 55 and a half note in measure 56. The Horns part (measures 55-56) features a melodic line with a half note in measure 55 and a half note in measure 56. The Music part (measures 55-56) features a melodic line with a half note in measure 55 and a half note in measure 56. The Recorder part (measures 55-56) features a melodic line with a half note in measure 55 and a half note in measure 56. The Timpani part (measures 55-56) features a melodic line with a half note in measure 55 and a half note in measure 56.

56

Guit.

El. Guit.

El. Guit.

B. Guit.

Pno.

Tn. Klx. Hns.

Xyl.

Ha. Be.

Synth.

D. Set

St.

C Hn.

M.

Rec.

Timp.

58

Guit.

El. Guit.

El. Guit.

B. Guit.

Pno.

Tn. Klx. Hns.

Xyl.

Ha. Be.

Synth.

D. Set

St.

C Hn.

M.

Rec.

Timp.

47

8

8

8

5

61

Guit.

El. Guit.

El. Guit.

B. Guit.

Pno.

Tn. Klx. Hns.

Xyl.

Ha. Be.

Synth.

D. Set

St.

C Hn.

M.

Rec.

Timp.

8

3

7

64

Guit.

El. Guit.

El. Guit.

B. Guit.

Pno.

Tn. Klx. Hns.

Xyl.

Ha. Be.

Synth.

D. Set

St.

C Hn.

M.

Rec.

Timp.

67

Guit.

El. Guit.

El. Guit.

B. Guit.

Pno.

Tn. Klx. Hns.

Xyl.

Ha. Be.

Synth.

D. Set

St.

C Hn.

M.

Rec.

Timp.

Downloaded from www.midicities.com

69 **p**

Guit.

El. Guit.

El. Guit.

B. Guit.

Pno.

Tn. Klx. Hns.

Xyl.

Ha. Be.

Synth.

D. Set

St.

C Hn.

M.

Rec.

Timp.

3

3

3

Pdf downloaded from www.midicities.com

72

Guit.

El. Guit.

El. Guit.

B. Guit.

Pno.

Tn. Klx. Hns.

Xyl.

Ha. Be.

Synth.

D. Set

St.

C Hn.

M.

Rec.

Timp.

Pdf downloaded from www.midicities.com
 Timp. 

75

Guit.

El. Guit.

El. Guit.

B. Guit.

Pno.

Tn. Klx. Hns.

Xyl.

Ha. Be.

Synth.

D. Set

St.

C Hn.

M.

Rec.

Timp.

76

Guit.

El. Guit.

El. Guit.

B. Guit.

Pno.

Tn. Klx. Hns.

Xyl.

Ha. Be.

Synth.

D. Set

St.

C Hn.

M.

Rec.

7

77

77

Guit.

El. Guit.

El. Guit.

B. Guit.

Pno.

Tn. Klx. Hns.

Xyl.

Ha. Be.

Synth.

D. Set

St.

C Hn.

M.

Rec.

Pdf downloaded from www.midioties.com

Pdf downloaded from www.midicties.com

79

Downloaded from www.midistaff.com

80

Guit.

El. Guit.

El. Guit.

B. Guit.

Pno.

Tn. Klx. Hns.

Xyl.

Ha. Be.

Synth.

D. Set

St.

C Hn.

M.

Rec.

9

Downloaded from www.musicalnotes.com

81

Guit.

El. Guit.

El. Guit.

B. Guit.

Pno.

Tn. Klx. Hns.

Xyl.

Ha. Be.

Synth.

D. Set

St.

C Hn.

M.

Rec.

5 3 7 3

82

Guit.

El. Guit.

El. Guit.

B. Guit.

Pno.

Tn. Klx. Hns.

Xyl.

Ha. Be.

Synth.

D. Set

St.

C Hn.

M.

Rec.

7

82

83

84

85

86

87

88

Pdf downloaded from www.midcities.com

Time

Pdf downloaded from www.midicities.com

86

Guit.

El. Guit.

El. Guit.

B. Guit.

Pno.

Tn. Klx. Hns.

Xyl.

Ha. Be.

Synth.

D. Set

St.

C Hn.

M.

Rec.

Timp.

The musical score for page 66, measures 86-89, is arranged for a large ensemble. The instruments and their parts are as follows:

- Guit.**: Treble clef, 86 measure starts with a whole note chord, followed by a half note chord, and a whole note chord in measure 89.
- El. Guit.**: Treble clef, 86 measure has a whole note chord, followed by a half note chord, and a whole note chord in measure 89.
- El. Guit.**: Treble clef, 86 measure has a whole note chord, followed by a half note chord, and a whole note chord in measure 89.
- B. Guit.**: Bass clef, 86 measure has a whole note chord, followed by a half note chord, and a whole note chord in measure 89.
- Pno.**: Treble clef, 86 measure has a whole note chord, followed by a half note chord, and a whole note chord in measure 89.
- Tn. Klx. Hns.**: Treble clef, 86 measure has a whole note chord, followed by a half note chord, and a whole note chord in measure 89.
- Xyl.**: Treble clef, 86 measure has a whole note chord, followed by a half note chord, and a whole note chord in measure 89.
- Ha. Be.**: Treble clef, 86 measure has a whole note chord, followed by a half note chord, and a whole note chord in measure 89.
- Synth.**: Treble clef, 86 measure has a whole note chord, followed by a half note chord, and a whole note chord in measure 89.
- D. Set**: Treble clef, 86 measure has a whole note chord, followed by a half note chord, and a whole note chord in measure 89.
- St.**: Treble clef, 86 measure has a whole note chord, followed by a half note chord, and a whole note chord in measure 89.
- C Hn.**: Treble clef, 86 measure has a whole note chord, followed by a half note chord, and a whole note chord in measure 89.
- M.**: Bass clef, 86 measure has a whole note chord, followed by a half note chord, and a whole note chord in measure 89.
- Rec.**: Treble clef, 86 measure has a whole note chord, followed by a half note chord, and a whole note chord in measure 89.
- Timp.**: Bass clef, 86 measure has a whole note chord, followed by a half note chord, and a whole note chord in measure 89.

87

Guit.

El. Guit.

El. Guit.

B. Guit.

Pno.

Th. Klx. Hns.

Xyl.

Ha. Be.

Synth.

D. Set

St.

C Hn.

M.

Rec.

Timp.

Downloaded from www.midcities.com

88

Guit.

El. Guit.

El. Guit.

B. Guit.

Pno.

Tn. Klx. Hns.

Xyl.

Ha. Be.

Synth.

D. Set

St.

C Hn.

M.

Rec.

Timp.

The musical score for page 68, measures 88-91, is arranged for a large ensemble. The staves are as follows:

- Guit.**: Treble clef, 8/8 time signature. Measures 88-91 show a melodic line with eighth and sixteenth notes, including a tie across measures 89 and 90.
- El. Guit.**: Treble clef, 8/8 time signature. Measures 88-91 show a rhythmic pattern of eighth notes and rests, with some chords.
- El. Guit.**: Treble clef, 8/8 time signature. Measures 88-91 show a rhythmic pattern of eighth notes and rests, with some chords.
- B. Guit.**: Bass clef, 8/8 time signature. Measures 88-91 show a melodic line with eighth and sixteenth notes, including a tie across measures 89 and 90.
- Pno.**: Treble clef, 8/8 time signature. Measures 88-91 show a rhythmic pattern of eighth notes and rests, with some chords.
- Tn. Klx. Hns.**: Treble clef, 8/8 time signature. Measures 88-91 show a rhythmic pattern of eighth notes and rests, with some chords.
- Xyl.**: Treble clef, 8/8 time signature. Measures 88-91 show a rhythmic pattern of eighth notes and rests, with some chords.
- Ha. Be.**: Treble clef, 8/8 time signature. Measures 88-91 show a rhythmic pattern of eighth notes and rests, with some chords.
- Synth.**: Treble clef, 8/8 time signature. Measures 88-91 show a rhythmic pattern of eighth notes and rests, with some chords.
- D. Set**: Treble clef, 8/8 time signature. Measures 88-91 show a rhythmic pattern of eighth notes and rests, with some chords.
- St.**: Treble clef, 8/8 time signature. Measures 88-91 show a rhythmic pattern of eighth notes and rests, with some chords.
- C Hn.**: Treble clef, 8/8 time signature. Measures 88-91 show a rhythmic pattern of eighth notes and rests, with some chords.
- M.**: Bass clef, 8/8 time signature. Measures 88-91 show a melodic line with eighth and sixteenth notes, including a tie across measures 89 and 90.
- Rec.**: Treble clef, 8/8 time signature. Measures 88-91 show a rhythmic pattern of eighth notes and rests, with some chords.
- Timp.**: Bass clef, 8/8 time signature. Measures 88-91 show a rhythmic pattern of eighth notes and rests, with some chords.

89

Guit.

El. Guit.

El. Guit.

B. Guit.

Pno.

Tn. Klx. Hns.

Xyl.

Ha. Be.

Synth.

D. Set

St.

C Hn.

M.

Rec.

Timp.

89

90

91

92

Pdf downloaded from www.midicities.com
 Timp. 

Timp.

92

Guit.

El. Guit.

El. Guit.

B. Guit.

Pno.

Tn. Klx. Hns.

Xyl.

Ha. Be.

Synth.

D. Set

St.

C Hn.

M.

Rec.

Timp.

Measures 92-95. The score includes staves for Guitar, Electric Guitar, Bass Guitar, Piano, Tenor Saxophone, Clarinet, Flute, Harp, Synthesizer, Drums, Strings, Horns, Maracas, and Timpani. The Guitar part features a melodic line with a repeat sign. The Electric Guitars play chords. The Bass Guitar has a simple bass line. The Piano plays a steady accompaniment. The Drums and Maracas provide rhythmic support. The other instruments are mostly silent or have short bursts of sound.

93

The musical score for page 93 features the following instruments and parts:

- Guit.**: Treble clef, 8va. Starts with a quarter note, followed by rests.
- El. Guit.**: Treble clef, 8va. Starts with a quarter note, followed by rests and chords.
- El. Guit.**: Treble clef, 8va. Starts with a quarter note, followed by rests and chords.
- B. Guit.**: Bass clef. Starts with a quarter note, followed by rests and a melodic line.
- Pno.**: Treble clef. Starts with a quarter note, followed by rests and a melodic line.
- Tn. Klx. Hns.**: Treble clef. Starts with a quarter note, followed by rests and a melodic line.
- Xyl.**: Treble clef. Starts with a quarter note, followed by rests.
- Ha. Be.**: Treble clef. Starts with a quarter note, followed by rests.
- Synth.**: Treble clef. Starts with a quarter note, followed by rests.
- D. Set**: Treble clef. Starts with a quarter note, followed by rests and a melodic line.
- St.**: Treble clef. Starts with a quarter note, followed by rests.
- C Hn.**: Treble clef. Starts with a quarter note, followed by rests.
- M.**: Bass clef. Starts with a quarter note, followed by rests and a melodic line.
- Rec.**: Treble clef. Starts with a quarter note, followed by rests.
- Timp.**: Bass clef. Starts with a quarter note, followed by rests and a melodic line.

94

Guit.

El. Guit.

El. Guit.

B. Guit.

Pno.

Tn. Klx. Hns.

Xyl.

Ha. Be.

Synth.

D. Set

St.

C Hn.

M.

Rec.

Timp.

Timp.

96

Guit.

El. Guit.

El. Guit.

B. Guit.

Pno.

Tn. Klx. Hns.

Xyl.

Ha. Be.

Synth.

D. Set

St.

C Hn.

M.

Rec.

Timp.

97

Guit.

El. Guit.

El. Guit.

B. Guit.

Pno.

Tn. Klx. Hns.

Xyl.

Ha. Be.

Synth.

D. Set

St.

C Hn.

M.

Rec.

Timp

99

Guit.

El. Guit.

El. Guit.

B. Guit.

Pno.

Tn. Klx. Hns.

Xyl.

Ha. Be.

Synth.

D. Set

St.

C Hn.

M.

Rec.

Timp.

The musical score for page 78, measures 99-102, is as follows:

- Measure 99:** Guit. has a whole rest. El. Guit. has a whole note chord (F#4, A4, C5). B. Guit. has a whole note (F#2). Pno., Tn. Klx. Hns., Synth., St., C Hn., M., and Rec. have whole rests. Xyl. has a whole note (F#4). Ha. Be. has a whole note (F#4).
- Measure 100:** Guit. has a whole note (F#4). El. Guit. has a whole note chord (F#4, A4, C5). B. Guit. has a whole note (F#2). Pno., Tn. Klx. Hns., Synth., St., C Hn., M., and Rec. have whole rests. Xyl. has a whole note (F#4). Ha. Be. has a whole note (F#4).
- Measure 101:** Guit. has a whole note (F#4). El. Guit. has a whole note chord (F#4, A4, C5). B. Guit. has a whole note (F#2). Pno., Tn. Klx. Hns., Synth., St., C Hn., M., and Rec. have whole rests. Xyl. has a whole note (F#4). Ha. Be. has a whole note (F#4).
- Measure 102:** Guit. has a whole note (F#4). El. Guit. has a whole note chord (F#4, A4, C5). B. Guit. has a whole note (F#2). Pno., Tn. Klx. Hns., Synth., St., C Hn., M., and Rec. have whole rests. Xyl. has a whole note (F#4). Ha. Be. has a whole note (F#4).

100

Guit.

El. Guit.

El. Guit.

B. Guit.

Pno.

Tn. Klx. Hns.

Xyl.

Ha. Be.

Synth.

D. Set

St.

C Hn.

M.

Rec.

Timp.

101

Guit.

El. Guit.

El. Guit.

B. Guit.

Pno.

Tn. Klx. Hns.

Xyl.

Ha. Be.

Synth.

D. Set

St.

C Hn.

M.

Rec.

Timp.

102

Guit.

El. Guit.

El. Guit.

B. Guit.

Pno.

Tn. Klx. Hns.

Xyl.

Ha. Be.

Synth.

D. Set

St.

C Hn.

M.

Rec.

Timp.

103

Guit.

El. Guit.

El. Guit.

B. Guit.

Pno.

Tn. Klx. Hns.

Xyl.

Ha. Be.

Synth.

D. Set

St.

C Hn.

M.

Rec.

Timp.

Downloaded from www.midcities.com

105

Guit.

El. Guit.

El. Guit.

B. Guit.

Pno.

Tn. Klx. Hns.

Xyl.

Ha. Be.

Synth.

D. Set

St.

C Hn.

M.

Rec.

Timp.

83

106

Guit.

El. Guit.

El. Guit.

B. Guit.

Pno.

Tn. Klx. Hns.

Xyl.

Ha. Be.

Synth.

D. Set

St.

C Hn.

M.

Rec.

Timp.

Pdf downloaded from www.midicities.com

Tn. Klx. Hns.

109

Guit.

El. Guit.

El. Guit.

B. Guit.

Pno.

Tn. Klx. Hns.

Xyl.

Ha. Be.

Synth.

D. Set

St.

C Hn.

M.

Rec.

Timp.

88

111

Guit.

El. Guit.

El. Guit.

B. Guit.

Pno.

Tn. Klx. Hns.

Xyl.

Ha. Be.

Synth.

D. Set

St.

C Hn.

M.

Rec.

Timp.

Downloaded from www.midicities.com

113

Guit.

El. Guit.

El. Guit.

B. Guit.

Pno.

Tn. Klx. Hns.

Xyl.

Ha. Be.

Synth.

D. Set

St.

C Hn.

M.

Rec.

Timp.

Detailed description of the musical score: The score is for measures 113, 114, and 115. The Guitar part (treble clef) features a melodic line with eighth and sixteenth notes, including a triplet in measure 115. The Electric Guitars (treble clef) play a rhythmic pattern of eighth notes with a sharp key signature. The Bass Guitar (bass clef) provides a steady bass line with eighth and quarter notes. The Piano, Trumpet/Clarinet/Horn, Harp/Bell, and Synthesizer parts are marked with rests. The Xylophone part (treble clef) has a melodic line with eighth notes and a triplet in measure 115. The Drums part (drum clef) shows a consistent pattern of eighth notes. The Snare, Cor Anglais, Mellophone, Recorder, and Timpani parts are marked with rests.

116

Guit.

El. Guit.

El. Guit.

B. Guit.

Pno.

Tn. Klx. Hns.

Xyl.

Ha. Be.

Synth.

D. Set

St.

C Hn.

M.

Rec.

Timp.

Downloaded from www.midicities.com

119

Guit.

El. Guit.

El. Guit.

B. Guit.

Pno.

Tn. Klx. Hns.

Xyl.

Ha. Be.

Synth.

D. Set

St.

C Hn.

M.

Rec.

Timp.

The musical score for page 91, measures 119-121, is as follows:

- Measure 119:** Guit. (8th fret, quarter note G4, quarter note A4, quarter note B4, quarter note C5), El. Guit. (chord G4-B4-D5, quarter note), El. Guit. (chord G4-B4-D5, quarter note), B. Guit. (quarter note G2, quarter note A2, quarter note B2, quarter note C3), Pno. (rest), Tn. Klx. Hns. (rest), Xyl. (chord G4-B4-D5, quarter note), Ha. Be. (rest), Synth. (rest), D. Set (chord G4-B4-D5, quarter note), St. (rest), C Hn. (quarter note G4, quarter note A4, quarter note B4, quarter note C5), M. (rest), Rec. (rest), Timp. (rest).
- Measure 120:** Guit. (quarter rest, quarter note G4, quarter note A4, quarter note B4, quarter note C5), El. Guit. (chord G4-B4-D5, quarter note), El. Guit. (chord G4-B4-D5, quarter note), B. Guit. (quarter note G2, quarter note A2, quarter note B2, quarter note C3), Pno. (rest), Tn. Klx. Hns. (rest), Xyl. (chord G4-B4-D5, quarter note), Ha. Be. (rest), Synth. (rest), D. Set (chord G4-B4-D5, quarter note), St. (rest), C Hn. (quarter note G4, quarter note A4, quarter note B4, quarter note C5), M. (rest), Rec. (rest), Timp. (rest).
- Measure 121:** Guit. (quarter rest, quarter note G4, quarter note A4, quarter note B4, quarter note C5), El. Guit. (chord G4-B4-D5, quarter note), El. Guit. (chord G4-B4-D5, quarter note), B. Guit. (quarter note G2, quarter note A2, quarter note B2, quarter note C3), Pno. (rest), Tn. Klx. Hns. (rest), Xyl. (chord G4-B4-D5, quarter note), Ha. Be. (rest), Synth. (rest), D. Set (chord G4-B4-D5, quarter note), St. (rest), C Hn. (quarter note G4, quarter note A4, quarter note B4, quarter note C5), M. (rest), Rec. (rest), Timp. (rest).

92

122

Guit.

El. Guit.

El. Guit.

B. Guit.

Pno.

Tn. Klx. Hns.

Xyl.

Ha. Be.

Synth.

D. Set

St.

C Hn.

M.

Rec.

Timp.

Downloaded from www.midicities.com

124

Guit.

El. Guit.

El. Guit.

B. Guit.

Pno.

Tn. Klx. Hns.

Xyl.

Ha. Be.

Synth.

D. Set

St.

C Hn.

M.

Rec.

Timp.

125

Guit.

El. Guit.

El. Guit.

B. Guit.

Pno.

Tn. Klx. Hns.

Xyl.

Ha. Be.

Synth.

D. Set

St.

C Hn.

M.

Rec.

Timp.

3

3

3

3

126

Guit.

El. Guit.

El. Guit.

B. Guit.

Pno.

Tn. Klx. Hns.

Xyl.

Ha. Be.

Synth.

D. Set

St.

C Hn.

M.

Rec.

Timp.

129

Guit.

El. Guit.

El. Guit.

B. Guit.

Pno.

Tn. Klx. Hns.

Xyl.

Ha. Be.

Synth.

D. Set

St.

C Hn.

M.

Rec.

Timp.

97

132

Guit.

El. Guit.

El. Guit.

B. Guit.

Pno.

Tn. Klx. Hns.

Xyl.

Ha. Be.

Synth.

D. Set

St.

C Hn.

M.

Rec.

Timp.

Downloaded from www.midcities.com

134

Guit. 

El. Guit. 

El. Guit. 

B. Guit. 

Pno. 

Tn. Klx. Hns. 

Xyl. 

Ha. Be. 

Synth. 

D. Set 

St. 

C Hn. 

M. 

Rec. 

Timp.

Pdf downloaded from www.midicities.com

138

Guit. 

El. Guit. 

El. Guit. 

B. Guit. 

Pno. 

Tn. Klx. Hns. 

Xyl. 

Ha. Be. 

Synth. 

D. Set 

St. 

C Hn. 

M. 

Rec. 

Timp. 

140

Guit.

El. Guit.

El. Guit.

B. Guit.

Pno.

Tn. Klx. Hns.

Xyl.

Ha. Be.

Synth.

D. Set

St.

C Hn.

M.

Rec.

Timp.

141

Guit.

El. Guit.

El. Guit.

B. Guit.

Pno.

Tn. Klx. Hns.

Xyl.

Ha. Be.

Synth.

D. Set

St.

C Hn.

M.

Rec.

The musical score for page 102, measures 141-142, is a complex orchestral arrangement. It features a variety of instruments, including Guitar, Electric Guitar, Bass Guitar, Piano, Trumpet/Clarinet/Horn, Xylophone, Harp/Bell, Synthesizer, Drums, Strings, Cor Anglais, Mellophone, and Recorder. The score is written in a multi-staff format, with each instrument having its own staff. The music is in a key with one sharp (F#) and a 4/4 time signature. The score includes a variety of musical notation, including notes, rests, triplets, and a 9-measure rest. The overall style is contemporary and experimental.

142

Guit.

El. Guit.

El. Guit.

B. Guit.

Pno.

Tn. Klx. Hns.

Xyl.

Ha. Be.

Synth.

D. Set

St.

C Hn.

M.

Rec.

Timp.

144

Guit.

El. Guit.

El. Guit.

B. Guit.

Pno.

Tn. Klx. Hns.

Xyl.

Ha. Be.

Synth.

D. Set

St.

C Hn.

M.

Rec.

Timp.

145

This musical score page contains 14 staves for measures 145 and 146. The instruments and their parts are as follows:

- Guit.:** Treble clef, 8va. Rest in both measures.
- El. Guit.:** Treble clef, 8va. Rest in both measures.
- El. Guit.:** Treble clef, 8va. Rest in both measures.
- B. Guit.:** Bass clef. Measure 145: Quarter note G2, eighth rest, quarter note F2. Measure 146: Quarter note G2, eighth rest, quarter note F2.
- Pno.:** Treble clef. Rest in both measures.
- Tn. Klx. Hns.:** Treble clef. Rest in both measures.
- Xyl.:** Treble clef. Rest in both measures.
- Ha. Be.:** Treble clef. Rest in both measures.
- Synth.:** Treble clef. Measure 145: Half note G4. Measure 146: Quarter note G4, quarter note A4.
- D. Set:** Percussion staff. Measure 145: Snare drum, eighth rest, snare drum, eighth note G4, eighth note F4. Measure 146: Snare drum, eighth rest, snare drum, eighth note G4, eighth note F4.
- St.:** Treble clef. Measure 145: Sustained chord of G2 and F2. Measure 146: Sustained chord of G2 and F2.
- C Hn.:** Treble clef. Rest in both measures.
- M.:** Bass clef. Rest in both measures.
- Rec.:** Treble clef. Measure 145: Sustained note G4. Measure 146: Sustained note G4.
- Timp.:** Bass clef. Rest in both measures.

147

Guit.

El. Guit.

El. Guit.

B. Guit.

Pno.

Tn. Klx. Hns.

Xyl.

Ha. Be.

Synth.

D. Set

St.

C Hn.

M.

Rec.

Timp.

Downloaded from www.midcities.com

149

Guit.

El. Guit.

El. Guit.

B. Guit.

Pno.

Tn. Klx. Hns.

Xyl.

Ha. Be.

Synth.

D. Set

St.

C Hn.

M.

Rec.

Timp.

150

Guit.

El. Guit.

El. Guit.

B. Guit.

Pno.

Tn. Klx. Hns.

Xyl.

Ha. Be.

Synth.

D. Set

St.

C Hn.

M.

Rec.

Timp.

Downloaded from www.midicities.com

152

This musical score page contains measures 152 and 153. The instruments and their parts are as follows:

- Guit.:** Treble clef, 8va. Rest in both measures.
- El. Guit.:** Treble clef, 8va. Rest in measure 152; half note in measure 153 with a long slur extending to the end of the page.
- El. Guit.:** Treble clef, 8va. Rest in measure 152; eighth note in measure 153 with a long slur extending to the end of the page.
- B. Guit.:** Bass clef. Quarter note in measure 152, eighth note in measure 153, followed by a rest.
- Pno.:** Treble clef. Rest in both measures.
- Tn. Klx. Hns.:** Treble clef. Rest in both measures.
- Xyl.:** Treble clef. Rest in both measures.
- Ha. Be.:** Treble clef. Rest in both measures.
- Synth.:** Treble clef. Quarter note in measure 152, half note in measure 153.
- D. Set:** Two staves. The top staff has a series of 'x' marks. The bottom staff has a quarter note in measure 152, eighth note in measure 153, followed by a rest.
- St.:** Bass clef. Octave chord in measure 152, followed by a long slur extending to the end of the page.
- C Hn.:** Treble clef. Rest in both measures.
- M.:** Bass clef. Rest in both measures.
- Rec.:** Treble clef. Quarter note in measure 152, eighth note in measure 153, followed by a rest.
- Timp.:** Bass clef. Rest in both measures.

154

This musical score page contains measures 154 and 155. The instruments and their parts are as follows:

- Guit.**: Treble clef, one measure rest.
- El. Guit.**: Treble clef, one measure whole note.
- El. Guit.**: Treble clef, one measure whole note with a long hairpin crescendo over measure 155.
- B. Guit.**: Bass clef, measure 154 has a quarter note, a quarter rest, and a quarter note; measure 155 has a whole rest.
- Pno.**: Treble clef, one measure whole rest.
- Tn. Klx. Hns.**: Treble clef, one measure whole rest.
- Xyl.**: Treble clef, measure 154 has four groups of eighth-note triplets; measure 155 has four groups of eighth-note triplets with quarter rests.
- Ha. Be.**: Treble clef, one measure whole rest.
- Synth.**: Treble clef, measure 154 has a half note; measure 155 has a half note, a quarter note, and a quarter note.
- D. Set**: Percussion, measure 154 has four 'x' marks; measure 155 has four 'x' marks, a quarter note, and a quarter note.
- St.**: Bass clef, measure 154 has a half note, a half note, and a half note; measure 155 has a half note, a half note, and a half note.
- C Hn.**: Treble clef, one measure whole rest.
- M.**: Bass clef, one measure whole rest.
- Rec.**: Treble clef, measure 154 has a whole rest; measure 155 has a quarter rest and a quarter note.
- Timp.**: Bass clef, one measure whole rest.

155

Guit.

El. Guit.

El. Guit.

B. Guit.

Pno.

Tn. Klx. Hns.

Xyl.

Ha. Be.

Synth.

D. Set

St.

C Hn.

M.

Rec.

Timp.

156

Guit.

El. Guit.

El. Guit.

B. Guit.

Pno.

Tn. Klx. Hns.

Xyl.

Ha. Be.

Synth.

D. Set

St.

C Hn.

M.

Rec.

Timp.

3

3

3

3

157

Guit.

El. Guit.

El. Guit.

B. Guit.

Pno.

Tn. Klx. Hns.

Xyl.

Ha. Be.

Synth.

D. Set

St.

C Hn.

M.

Rec.

Timp.

3

3

3

3

Timp.

159

Guit.

El. Guit.

El. Guit.

B. Guit.

Pno.

Tn. Klx. Hns.

Xyl.

Ha. Be.

Synth.

D. Set

St.

C Hn.

M.

Rec.

Timp.

3

3

3

3

Pdf downloaded from www.midicities.com

161

Guit.

El. Guit.

El. Guit.

B. Guit.

Pno.

Tn. Klx. Hns.

Xyl.

Ha. Be.

Synth.

D. Set

St.

C Hn.

M.

Rec.

Timp.

3

3

3

3

162

Guit.

El. Guit.

El. Guit.

B. Guit.

Pno.

Tn. Klx. Hns.

Xyl.

Ha. Be.

Synth.

D. Set

St.

C Hn.

M.

Rec.

Timp.

Downloaded from www.midcities.com

163

Guit.

El. Guit.

El. Guit.

B. Guit.

Pno.

Tn. Klx. Hns.

Xyl.

Ha. Be.

Synth.

D. Set

St.

C Hn.

M.

Rec.

Timp.

3

3

3

3

164 $\text{♩} = 126$

Guit.

El. Guit.

El. Guit.

B. Guit.

Pno.

Tn. Klx. Hns.

Xyl.

Ha. Be.

Synth.

D. Set

St.

C Hn.

M.

Rec.

Timp.

3

3

3

3

165

Guit.

El. Guit.

El. Guit.

B. Guit.

Pno.

Tn. Klx. Hns.

Xyl.

Ha. Be.

Synth.

D. Set

St.

C Hn.

M.

Rec.

Timp.

3

3

3

3

8

8

Downloaded from www.midcities.com

Timp.

A musical staff with a bass clef and a colon, likely indicating the start of a section or a specific instrument part.

167 $\text{♩} = 113$ $\text{♩} = 106$ $\text{♩} = 102$

Guit.

El. Guit.

El. Guit.

B. Guit.

Pno.

Tn. Klx. Hns.

Xyl.

Ha. Be.

Synth.

D. Set

St.

C Hn.

M.

Rec.

Timp.

Pdf downloaded from www.midicities.com