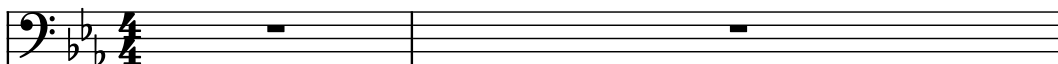
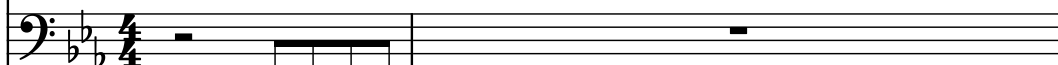


♩ = 82

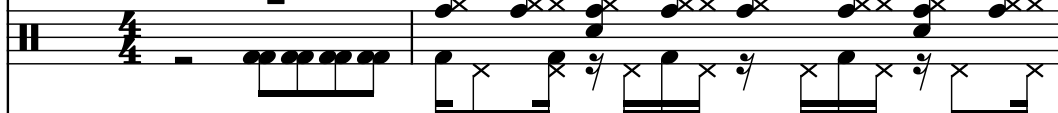
5-str. Electric Bass, tk2



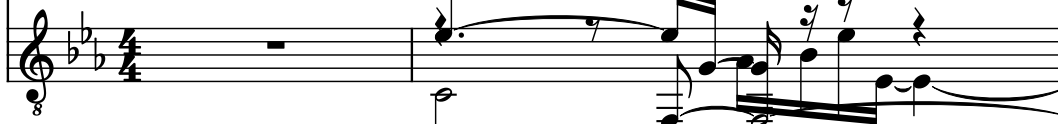
Sine Synthesizer, tk9



Drumset, tk10

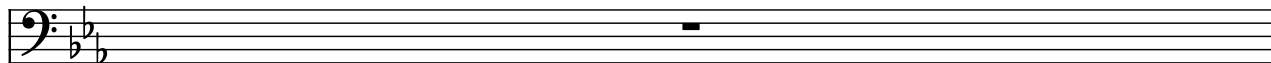


Acoustic Guitar, tk13

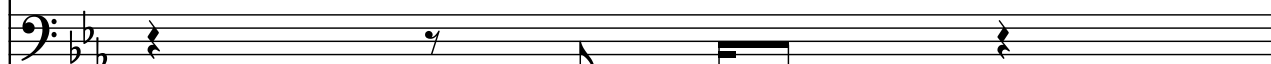


3

El. B.



Synth.



D. Set

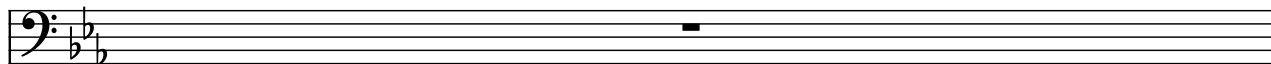


Guit.

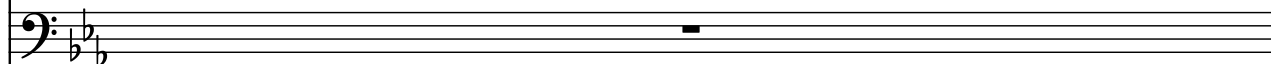


4

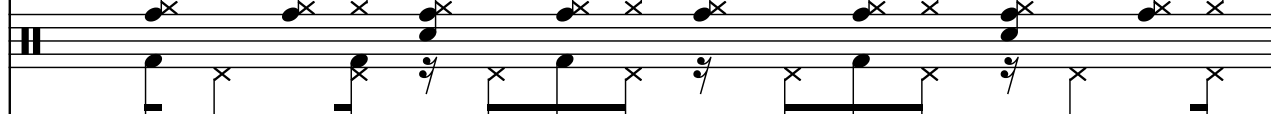
El. B.



Synth.



D. Set



Guit.



5

El. B.

Synth.

D. Set

Guit.

6

El. B.

Synth.

D. Set

Guit.

7

El. B.

Synth.

D. Set

Guit.

8

El. B.

Synth.

D. Set

Guit.

9

El. B.

Synth.

D. Set

Guit.

10

El. B.

Synth.

D. Set

Guit.

11

El. B.

Synth.

D. Set

Guit.

12

El. B.

Synth.

D. Set

Guit.

13

El. B.

Synth.

D. Set

Guit.

14

El. B.

Synth.

D. Set

Guit.

15

15

El. B.

Synth.

D. Set

Guit.

16

16

El. B.

Synth.

D. Set

Guit.

17

18

19

Pdf downloaded from www.midicities.com

20

El. B.

Synth.

D. Set

Guit.

8

21

El. B.

Synth.

D. Set

Guit.

8

22

El. B.

Synth.

D. Set

Guit.

8

23

El. B.

Synth.

D. Set

Guit.

24

El. B.

Synth.

D. Set

Guit.

25

El. B.

Synth.

D. Set

Guit.

26

El. B.

Synth.

D. Set

Guit.

27

El. B.

Synth.

D. Set

Guit.

28

El. B.

Synth.

D. Set

Guit.

29

The image displays a musical score for the song "The Sound of Silence" by Simon & Garfunkel. The score is arranged for four instruments: El. B. (Electric Bass), Synth. (Synthesizer), D. Set (Drum Set), and Guit. (Guitar). The key signature is B-flat major (two flats) and the time signature is 4/4. The score is divided into four systems, each corresponding to one of the instruments. The El. B. part starts with a low E note, followed by a series of eighth and quarter notes. The Synth. part features a series of chords and single notes, including a prominent F major chord. The D. Set part shows a drum pattern with snare and bass drum hits. The Guit. part features a series of chords and single notes, including a prominent F major chord. The score is written in a standard musical notation style, with notes, rests, and bar lines clearly visible.

30

El. B.

Synth.

D. Set

Guit.

31

El. B.

Synth.

D. Set

Guit.

32

El. B.

Synth.

D. Set

Guit.

33

El. B.

Synth.

D. Set

Guit.

34

El. B.

Synth.

D. Set

Guit.

35

El. B.

Synth.

D. Set

Guit.

38

El. B.

Synth.

D. Set

Guit.

39

El. B.

Synth.

D. Set

Guit.

40

El. B.

Synth.

D. Set

Guit.

41

El. B.

Synth.

D. Set

Guit.

42

El. B.

Synth.

D. Set

Guit.

43

El. B.

Synth.

D. Set

Guit.

44

El. B.

Synth.

D. Set

Guit.

45

El. B.

Synth.

D. Set

Guit.

46

El. B.

Synth.

D. Set

Guit.

47

El. B.

Synth.

D. Set

Guit.

48

El. B.

Synth.

D. Set

Guit.

49

El. B.

Synth.

D. Set

Guit.

50

El. B.

Synth.

D. Set

Guit.

3

51

El. B.

Synth.

D. Set

Guit.

7

52

El. B.

Synth.

D. Set

Guit.

7

53

El. B.

Synth.

D. Set

Guit.

3

54

El. B.

Synth.

D. Set

Guit.

3

55

El. B.

Synth.

D. Set

Guit.

56

El. B.

Synth.

D. Set

Guit.

57

El. B.

Synth.

D. Set

Guit.

58

El. B.

Synth.

D. Set

Guit.

59

El. B.

Synth.

D. Set

Guit.

60

El. B.

Synth.

D. Set

Guit.

61

El. B.

Synth.

D. Set

Guit.

62

El. B.

Synth.

D. Set

Guit.

63

El. B.

Synth.

D. Set

Guit.

64

El. B.

Synth.

D. Set

Guit.

65

El. B.

Synth.

D. Set

Guit.

66

El. B.

Synth.

D. Set

Guit.

67

El. B.

Synth.

D. Set

Guit.

68

El. B.

Synth.

D. Set

Guit.

69

El. B.

Synth.

D. Set

Guit.

70

El. B.

Synth.

D. Set

Guit.

71

El. B.

Synth.

D. Set

Guit.

72

El. B.

Synth.

D. Set

Guit.

73

El. B.

Synth.

D. Set

Guit.