

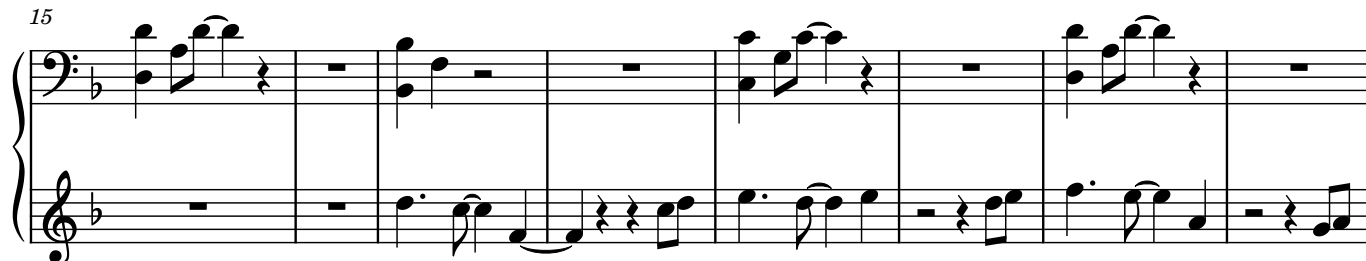
♩ = 140



8



15



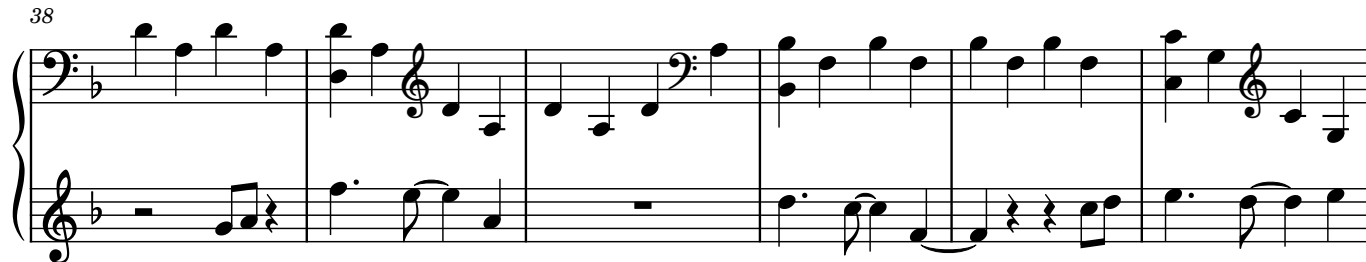
23



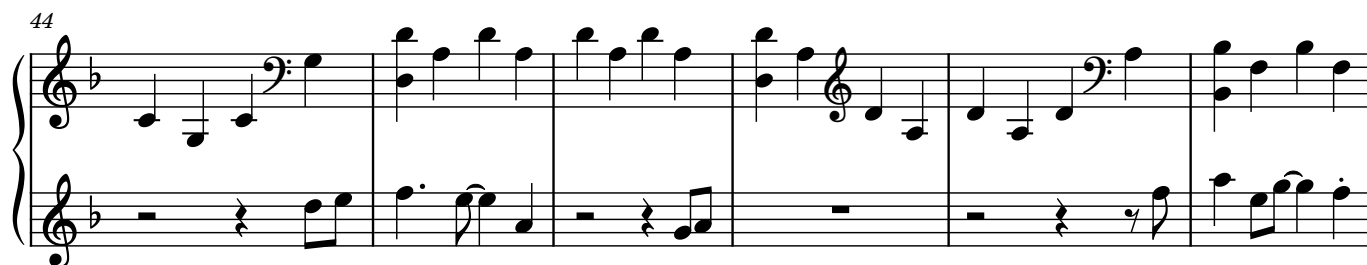
31



38



44



System 1 (Measures 44-49): The right hand plays a sequence of eighth and sixteenth notes, while the left hand provides a steady accompaniment of eighth notes. The key signature has one flat (B-flat).

50



System 2 (Measures 50-55): The right hand continues with eighth and sixteenth notes, and the left hand features a mix of eighth and sixteenth notes with some rests. The key signature has one flat (B-flat).

56




System 3 (Measures 56-61): The right hand plays eighth and sixteenth notes, and the left hand has a pattern of eighth notes with occasional rests. The key signature has one flat (B-flat).

62



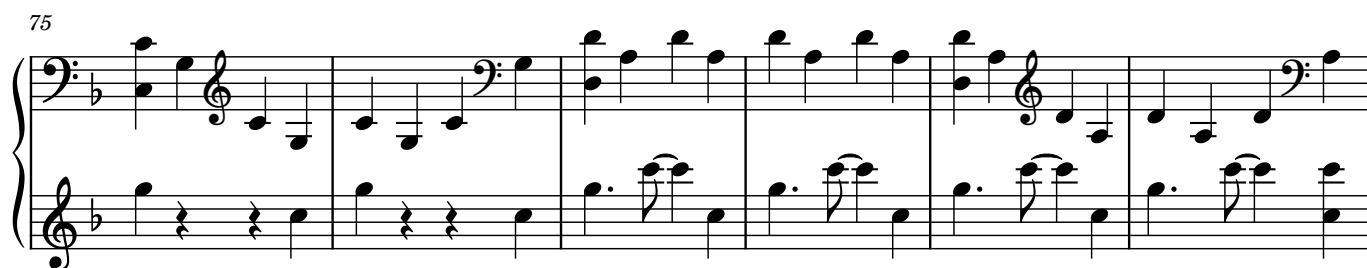
System 4 (Measures 62-67): The right hand continues with eighth and sixteenth notes, and the left hand features a mix of eighth and sixteenth notes with some rests. The key signature has one flat (B-flat).

68



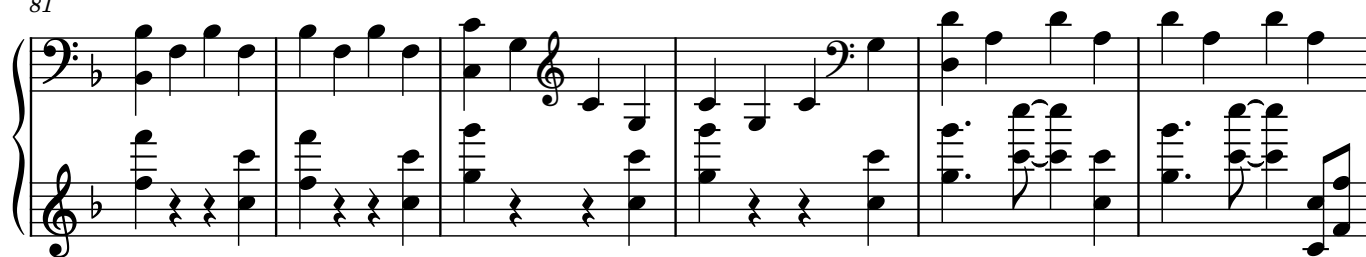
System 5 (Measures 68-74): The right hand plays eighth and sixteenth notes, and the left hand has a pattern of eighth notes with occasional rests. The key signature has one flat (B-flat).

75



System 6 (Measures 75-80): The right hand continues with eighth and sixteenth notes, and the left hand features a mix of eighth and sixteenth notes with some rests. The key signature has one flat (B-flat).

81



87



92

