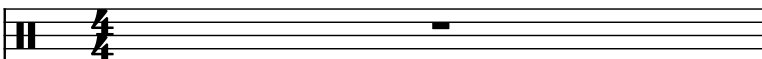
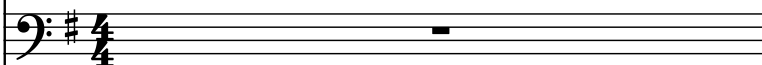


♩ = 61

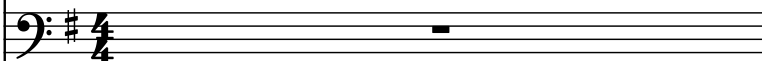
Drumset



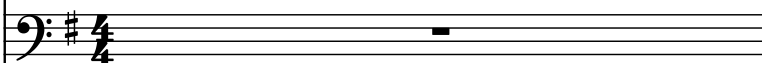
Contrabass



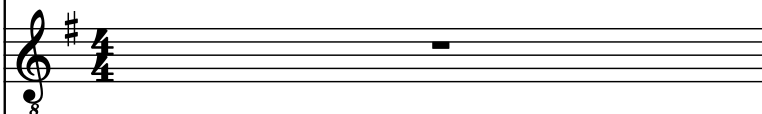
Contrabass



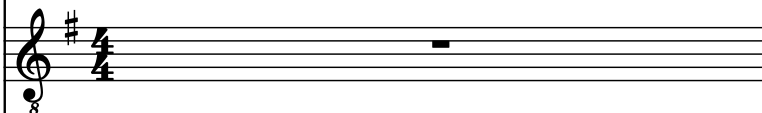
5-str. Electric Bass



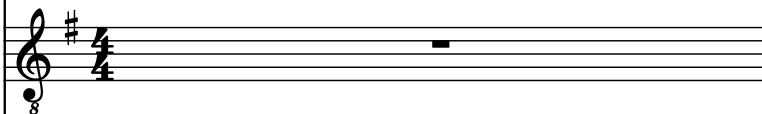
Electric Guitar



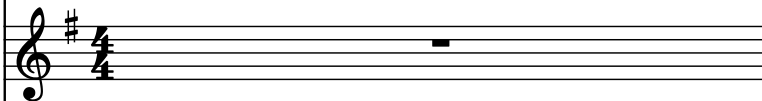
Electric Guitar



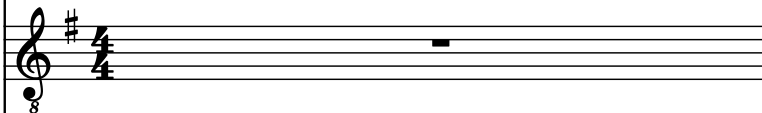
Electric Guitar



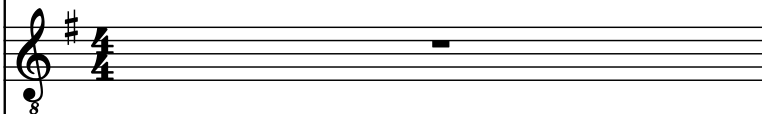
Piano



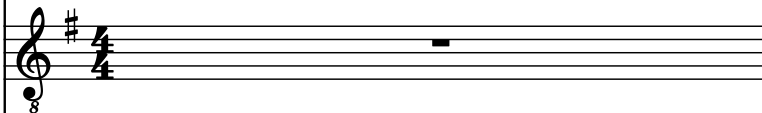
Acoustic Guitar



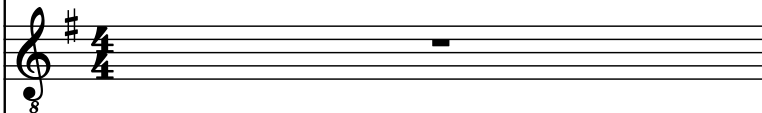
Acoustic Guitar



Acoustic Guitar



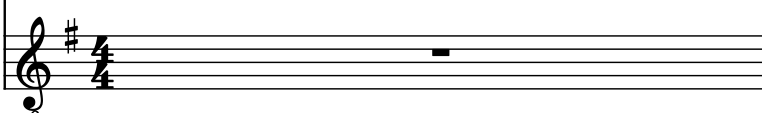
Electric Guitar



Electric Guitar



Alto Saxophone



Score for 15 instruments, all in the key of D major (indicated by two sharps, F# and C#).

The instruments and their parts are:

- D. Set: Two whole rests.
- Cb. (Contrabass): Two whole rests.
- Cb. (Contrabass): Two whole rests.
- El. B. (Electric Bass): Two whole rests.
- El. Guit. (Electric Guitar): Two whole rests.
- El. Guit. (Electric Guitar): Two whole rests.
- El. Guit. (Electric Guitar): Two whole rests.
- Pno. (Piano): Two whole rests.
- Guit. (Guitar): A complex melodic line with triplets and sixteenth notes.
- Guit. (Guitar): A single note followed by a triplet of eighth notes.
- Guit. (Guitar): A single note followed by a triplet of eighth notes.
- El. Guit. (Electric Guitar): Two whole rests.
- El. Guit. (Electric Guitar): Two whole rests.
- A. Sax. (Alto Saxophone): Two whole rests.
- Guit. (Guitar): A complex melodic line with triplets and sixteenth notes.

Page 2 of 2.

D. Set

Cb.

Cb.

El. B.

El. Guit.

El. Guit.

El. Guit.

Pno.

Guit.

Guit.

Guit.

El. Guit.

El. Guit.

A. Sax.

Guit.

3

D. Set

Cb.

Cb.

El. B.

El. Guit.

El. Guit.

El. Guit.

Pno.

Guit.

Guit.

Guit.

El. Guit.

El. Guit.

A. Sax.

The musical score for page 4 is arranged in a multi-staff format. The instruments and their parts are as follows:

- D. Set:** A single staff with a double bar line at the beginning.
- Cb. (Contrabass):** Two staves. The first staff contains a melodic line with a sharp key signature and a slur over a group of notes. The second staff is mostly empty.
- El. B. (Electric Bass):** A single staff with a long slur spanning across the measure.
- El. Guit. (Electric Guitar):** Five staves. The first three staves have a sharp key signature and a double bar line. The fourth and fifth staves are also mostly empty.
- Pno. (Piano):** A single staff with a sharp key signature and a double bar line.
- Guit. (Guitar):** Three staves. The first staff contains a complex melodic line with a sharp key signature, a double bar line, and a triplet of eighth notes. The second and third staves are mostly empty.
- A. Sax. (Alto Saxophone):** A single staff with a sharp key signature and a double bar line.

The score includes various musical notations such as slurs, triplets, and dynamic markings. The key signature is sharp (F#) for most instruments.

D. Set

Cb.

Cb.

El. B.

El. Guit.

El. Guit.

El. Guit.

Pno.

Guit.

Guit.

Guit.

El. Guit.

El. Guit.

A. Sax.

The musical score for page 5 features the following instruments and notation:

- D. Set:** A single measure with a whole rest.
- Cb. (Contrabass):** Two staves. The first staff has a whole rest, followed by a series of eighth notes (F#4, G4, A4, B4, C5, D5, E5, F#5) with a slur over the last four notes. The second staff has a whole rest.
- El. B. (Electric Bass):** A single staff with a whole rest, followed by a dotted half note (F#3) and an eighth note (G3).
- El. Guit. (Electric Guitar):** Four staves, each with a whole rest.
- Pno. (Piano):** A single staff with a whole rest.
- Guit. (Guitar):** Two staves. The first staff has a complex rhythmic pattern of eighth and sixteenth notes, including triplets and slurs. The second staff has a whole rest.
- El. Guit. (Electric Guitar):** Two staves, each with a whole rest.
- A. Sax. (Alto Saxophone):** A single staff with a complex rhythmic pattern of eighth and sixteenth notes, including triplets and slurs.

D. Set

Cb.

Cb.

El. B.

El. Guit.

El. Guit.

El. Guit.

Pno.

Guit.

Guit.

Guit.

El. Guit.

El. Guit.

A. Sax.

Guit.

The musical score for page 6 is arranged in a multi-staff format. The instruments and their parts are as follows:

- D. Set:** A single staff with a whole rest.
- Cb. (Contrabass):** Two staves. The first staff has a whole rest, a quarter note, and a half note. The second staff has a whole rest.
- El. B. (Electric Bass):** A single staff with a whole note, a quarter note, and a half note.
- El. Guit. (Electric Guitar):** Five staves. The first three staves have whole rests. The fourth and fifth staves have a whole note.
- Pno. (Piano):** A single staff with a whole note.
- Guit. (Guitar):** Two staves. The first staff has a complex texture of chords and arpeggios. The second staff has a whole rest.
- El. Guit. (Electric Guitar):** Two staves. Both have whole rests.
- A. Sax. (Alto Saxophone):** A single staff with a whole note, a quarter note, and a half note.
- Guit. (Guitar):** A single staff at the bottom with a complex texture of chords and arpeggios.

The score includes a variety of musical notations such as rests, notes, and complex guitar textures. A red watermark "Pdf downloaded from www.miccities.com" is visible at the bottom left.

D. Set

Cb.

Cb.

El. B.

El. Guit.

El. Guit.

El. Guit.

Pno.

Guit.

Guit.

Guit.

El. Guit.

El. Guit.

A. Sax.

Guit.

The musical score for page 7 consists of 15 staves. The instruments are: D. Set (top), Cb. (2nd), Cb. (3rd), El. B. (4th), El. Guit. (5th), El. Guit. (6th), El. Guit. (7th), Pno. (8th), Guit. (9th), Guit. (10th), Guit. (11th), El. Guit. (12th), El. Guit. (13th), A. Sax. (14th), and Guit. (bottom). The key signature is one sharp (F#). The D. Set part has a whole rest. The first Cb. part has a melodic line with eighth and sixteenth notes. The second Cb. part has a whole rest. The El. B. part has a long note with a slur. The El. Guit. parts (5th, 6th, 7th) have whole rests. The Pno. part has a whole note followed by a complex rhythmic pattern. The Guit. parts (9th, 10th, 11th) have various rhythmic patterns, including triplets. The A. Sax. part has a melodic line with triplets. The bottom Guit. part has a complex rhythmic pattern.

D. Set

Cb.

Cb.

El. B.

El. Guit.

El. Guit.

El. Guit.

Pno.

Guit.

Guit.

Guit.

El. Guit.

El. Guit.

A. Sax.

Guit.

3

Downloaded from www.medicities.com

D. Set

Cb.

Cb.

El. B.

El. Guit.

El. Guit.

El. Guit.

Pno.

Guit.

Guit.

Guit.

El. Guit.

El. Guit.

A. Sax.

Guit.

The musical score for page 9 is arranged in a multi-staff format. The instruments and their parts are as follows:

- D. Set:** A single staff with a double bar line at the beginning and a single note in the middle.
- Cb. (Contrabass):** Two staves. The first staff has a series of notes with a slur, followed by rests. The second staff has a single note in the middle.
- El. B. (Electric Bass):** A single staff with a long note in the middle, followed by a rest and a final note.
- El. Guit. (Electric Guitar):** Four staves, each with a single note in the middle.
- Pno. (Piano):** A single staff with a single note in the middle, followed by a long note.
- Guit. (Guitar):** Three staves. The first staff has a complex melodic line with many notes. The second staff has a single note in the middle. The third staff has a single note in the middle.
- A. Sax. (Alto Saxophone):** A single staff with a single note in the middle, followed by a rest and a final note.
- Guit. (Guitar):** A single staff at the bottom with a complex melodic line with many notes.

The score includes various musical notations such as notes, rests, and articulation marks. The key signature is one sharp (F#).

Pdf downloaded from www.midicities.com

11

D. Set

Cb.

Cb.

El. B.

El. Guit.

El. Guit.

El. Guit.

Pno.

Guit.

Guit.

Guit.

El. Guit.

El. Guit.

A. Sax.

The musical score for page 11 is arranged in a multi-staff format. The instruments and their parts are as follows:

- D. Set:** Features a series of rhythmic patterns represented by 'x' marks on a staff.
- Cb. (Contrabass):** The first Cb. part has a melodic line with a flat (B-flat) and a dotted note. The second Cb. part is mostly silent.
- El. B. (Electric Bass):** Plays a long, sustained note with a slur.
- El. Guit. (Electric Guitar):** Four staves, mostly silent.
- Pno. (Piano):** Plays a melodic line with a slur.
- Guit. (Guitar):** The first Guit. part has a complex, fast-paced melodic line with a triplet. The second Guit. part has a single note with a triplet. The third Guit. part has a single note with a triplet.
- A. Sax. (Alto Saxophone):** Plays a melodic line with a triplet.

Additional markings include a '3' (triplet) under a group of notes in the Pno. part, and a '3' (triplet) under a group of notes in the A. Sax. part.

12

D. Set

Cb.

Cb.

El. B.

El. Guit.

El. Guit.

El. Guit.

Pno.

Guit.

Guit.

Guit.

El. Guit.

El. Guit.

A. Sax.

3

3

13

D. Set

Cb.

Cb.

El. B.

El. Guit.

El. Guit.

El. Guit.

Pno.

Guit.

Guit.

Guit.

El. Guit.

El. Guit.

A. Sax.

The musical score for page 13 is arranged in a multi-staff format. The instruments and their parts are as follows:

- D. Set:** The top staff, featuring a series of 'x' marks indicating a specific rhythmic pattern.
- Cb. (Contrabass):** The second staff, showing a melodic line with a half note and a quarter note.
- Cb. (Contrabass):** The third staff, which is mostly empty, indicating a rest.
- El. B. (Electric Bass):** The fourth staff, showing a melodic line with a half note and a quarter note.
- El. Guit. (Electric Guitar):** The fifth, sixth, and seventh staves, each showing a melodic line with a half note and a quarter note.
- Pno. (Piano):** The eighth staff, showing a melodic line with a half note and a quarter note.
- Guit. (Guitar):** The ninth staff, showing a complex melodic line with many notes and articulation marks.
- Guit. (Guitar):** The tenth staff, showing a melodic line with a half note and a quarter note.
- Guit. (Guitar):** The eleventh staff, which is mostly empty, indicating a rest.
- El. Guit. (Electric Guitar):** The twelfth and thirteenth staves, each showing a melodic line with a half note and a quarter note.
- A. Sax. (Alto Saxophone):** The fourteenth staff, showing a melodic line with a half note and a quarter note.

14

D. Set

Cb.

Cb.

El. B.

El. Guit.

El. Guit.

El. Guit.

Pno.

Guit.

Guit.

Guit.

El. Guit.

El. Guit.

A. Sax.

3

3

The musical score for page 14 is arranged in a multi-staff format. The instruments and their parts are as follows:

- D. Set:** The top staff, marked with a rehearsal mark '14'. It features a series of 'x' marks above a staff, indicating a specific rhythmic pattern.
- Cb. (Contrabass):** Two staves. The first Cb. staff has a series of notes, while the second Cb. staff is mostly empty with a few notes.
- El. B. (Electric Bass):** A staff with a few notes, including a triplet.
- El. Guit. (Electric Guitar):** Four staves. The first El. Guit. staff has a few notes, while the others are mostly empty.
- Pno. (Piano):** A staff with a few notes, including a triplet.
- Guit. (Guitar):** Three staves. The first Guit. staff has a complex, multi-measure rest, while the others have a few notes.
- El. Guit. (Electric Guitar):** Two staves, both of which are mostly empty.
- A. Sax. (Alto Saxophone):** The bottom staff, featuring a complex melody with triplets and other musical notations.

The score includes various musical notations such as notes, rests, and triplets, indicating a complex and rhythmic piece.

15

D. Set

Cb.

Cb.

El. B.

El. Guit.

El. Guit.

El. Guit.

Pno.

Guit.

Guit.

Guit.

El. Guit.

El. Guit.

A. Sax.

Guit.

The musical score for page 15 is arranged in a multi-staff format. The instruments and their parts are as follows:

- D. Set:** Features a series of rhythmic patterns represented by 'x' marks on a staff, with some notes and rests below.
- Cb. (Contrabass):** Two staves. The first has a few notes and rests, while the second is mostly empty with a few notes.
- El. B. (Electric Bass):** A single staff with a few notes and rests.
- El. Guit. (Electric Guitar):** Four staves. The first three have mostly empty staves with a few notes, while the fourth has a more active part with notes and rests.
- Pno. (Piano):** A single staff with a few notes and rests.
- Guit. (Guitar):** Two staves. The first has a complex part with tremolos and notes, while the second has a more active part with notes and rests.
- A. Sax. (Alto Saxophone):** A single staff with a few notes and rests.
- Guit. (Guitar):** A single staff at the bottom with a complex part with tremolos and notes.

The score includes various musical notations such as rests, notes, and complex guitar parts with tremolos and triplets. The page number 15 is visible in the top right corner and at the beginning of the first staff.

Pdf downloaded from www.midcities.com

17

D. Set

Cb.

Cb.

El. B.

El. Guit.

El. Guit.

El. Guit.

Pno.

Guit.

Guit.

Guit.

El. Guit.

El. Guit.

A. Sax.

The musical score for page 17 is arranged in a multi-staff format. The instruments and their parts are as follows:

- D. Set:** The top staff, featuring a series of rhythmic patterns with 'x' marks above the notes, indicating a specific playing technique.
- Cb. (Contrabass):** Two staves, both showing a long rest followed by a short melodic phrase in the final measure.
- El. B. (Electric Bass):** A staff with a long melodic line spanning the first two measures, followed by a rest.
- El. Guit. (Electric Guitar):** Three staves. The first staff has a long melodic line. The second and third staves feature complex rhythmic patterns, including triplets and slurs.
- Pno. (Piano):** A staff with a long rest.
- Guit. (Guitar):** Two staves. The first staff has a complex rhythmic pattern, while the second staff has a long rest.
- El. Guit. (Electric Guitar):** Two staves, both with long rests.
- A. Sax. (Alto Saxophone):** A staff with a long rest.

The score includes various musical notations such as triplets, slurs, and dynamic markings, indicating a complex and detailed composition.

18

D. Set

Cb.

Cb.

El. B.

El. Guit.

El. Guit.

El. Guit.

Pno.

Guit.

Guit.

Guit.

El. Guit.

El. Guit.

A. Sax.

This musical score page, numbered 18, contains 14 staves. The instruments are listed on the left: D. Set, Cb. (two staves), El. B., El. Guit. (four staves), Pno., Guit. (three staves), and A. Sax. The key signature is one sharp (F#). The D. Set part features a series of 'x' marks on a staff with a double bar line. The Cb. parts consist of dense, repeated notes. The El. B. part has a few scattered notes. The El. Guit. parts include some initial notes and rests. The Pno. part is mostly empty. The Guit. parts feature complex, repeated patterns. The El. Guit. and A. Sax. parts are mostly empty.

19

D. Set

Cb.

Cb.

El. B.

El. Guit.

El. Guit.

El. Guit.

Pno.

Guit.

Guit.

Guit.

El. Guit.

El. Guit.

A. Sax.

The musical score for page 19 is arranged in a multi-staff format. The instruments and their parts are as follows:

- D. Set:** The top staff, featuring a series of rhythmic patterns with 'x' marks above the notes, indicating a specific playing technique.
- Cb. (Contrabass):** Two staves below D. Set, showing a bass line with a few notes and rests.
- El. B. (Electric Bass):** A staff below the Cb. parts, featuring a melodic line with a long slur.
- El. Guit. (Electric Guitar):** Four staves, mostly containing rests, indicating they are not playing in this section.
- Pno. (Piano):** A staff below the El. Guit. parts, also containing rests.
- Guit. (Guitar):** Three staves. The first staff has a complex melodic line with triplets and slurs. The other two staves contain rests.
- El. Guit. (Electric Guitar):** Two staves, containing rests.
- A. Sax. (Alto Saxophone):** The bottom staff, containing rests.

The score includes various musical notations such as slurs, triplets, and rests, indicating a complex and dynamic performance.

20

D. Set

Cb.

Cb.

El. B.

El. Guit.

El. Guit.

El. Guit.

Pno.

Guit.

Guit.

Guit.

El. Guit.

El. Guit.

A. Sax.

The musical score for page 20 is written for a large ensemble. The key signature is G major (one sharp) and the time signature is 4/4. The score includes parts for D. Set, two Cb. (Contrabass), El. B. (Electric Bass), three El. Guit. (Electric Guitar), Pno. (Piano), three Guit. (Guitar), and A. Sax. (Alto Saxophone). The D. Set part features a melodic line with many 'x' marks, possibly indicating a specific technique or a placeholder. The Cb. parts provide a steady bass line. The El. B. part has a melodic line. The El. Guit. parts have various textures, including a complex arpeggiated figure in the first staff. The Pno. part is mostly silent. The Guit. parts have a complex, fast-moving texture. The El. Guit. parts have a steady bass line. The A. Sax. part is mostly silent.

21

D. Set

Cb.

Cb.

El. B.

El. Guit.

El. Guit.

El. Guit.

Pno.

Guit.

Guit.

Guit.

El. Guit.

El. Guit.

A. Sax.

The musical score for page 21 is arranged in a multi-staff format. The instruments and their parts are as follows:

- D. Set:** The top staff, featuring a series of rhythmic patterns with 'x' marks above the notes, indicating a specific playing technique.
- Cb. (Contrabass):** Two staves below D. Set, showing a melodic line with a few notes and rests.
- El. B. (Electric Bass):** A staff below the Cb. parts, showing a melodic line with a few notes and rests.
- El. Guit. (Electric Guitar):** Four staves below El. B., mostly containing rests, indicating they are not playing in this section.
- Pno. (Piano):** A staff below the El. Guit. parts, mostly containing rests.
- Guit. (Guitar):** Two staves below Pno., showing a complex melodic line with triplets and slurs.
- A. Sax. (Alto Saxophone):** The bottom staff, mostly containing rests.

The score includes various musical notations such as triplets, slurs, and rests, indicating a complex and dynamic piece of music.

22

D. Set

Cb.

Cb.

El. B.

El. Guit.

El. Guit.

El. Guit.

Pno.

Guit.

Guit.

Guit.

El. Guit.

El. Guit.

A. Sax.

The musical score for page 22 is written for a large ensemble. The key signature is one sharp (F#), and the time signature is 4/4. The score includes parts for D. Set, two Cb. (Contrabass), El. B. (Electric Bass), four El. Guit. (Electric Guitar), Pno. (Piano), three Guit. (Guitar), and A. Sax. (Alto Saxophone). The D. Set part features a complex rhythmic pattern with many 'x' marks. The Cb. parts have a steady eighth-note bass line. The El. B. part has a simple eighth-note melody. The El. Guit. parts have various textures, including a complex arpeggiated figure in the first and a simple eighth-note melody in the others. The Pno. part has a simple eighth-note melody. The Guit. parts have a complex arpeggiated figure. The El. Guit. parts have a simple eighth-note melody. The A. Sax. part has a simple eighth-note melody.

23

D. Set

Cb.

Cb.

El. B.

El. Guit.

El. Guit.

El. Guit.

Pno.

Guit.

Guit.

Guit.

El. Guit.

El. Guit.

A. Sax.

The musical score for page 23 is arranged in a multi-staff format. The instruments and their parts are as follows:

- D. Set:** The top staff, featuring a series of rhythmic patterns with 'x' marks above the notes, indicating a specific playing technique.
- Cb. (Contrabass):** Two staves below D. Set, showing a simple bass line with a few notes and rests.
- El. B. (Electric Bass):** A staff below the Cb. staves, featuring a melodic line with a long slur.
- El. Guit. (Electric Guitar):** Four staves, mostly containing rests, indicating they are not playing in this section.
- Pno. (Piano):** A staff below the El. Guit. staves, also containing rests.
- Guit. (Guitar):** Three staves. The first staff has a complex melodic line with triplets and slurs. The other two staves contain rests.
- El. Guit. (Electric Guitar):** Two staves, containing rests.
- A. Sax. (Alto Saxophone):** The bottom staff, containing rests.

The score includes various musical notations such as slurs, triplets, and rests, indicating a complex and dynamic piece.

24

D. Set

Cb.

Cb.

El. B.

El. Guit.

El. Guit.

El. Guit.

Pno.

Guit.

Guit.

Guit.

El. Guit.

El. Guit.

A. Sax

The musical score for page 24 is arranged in a multi-staff format. The instruments listed on the left are D. Set, Cb., Cb., El. B., El. Guit., El. Guit., El. Guit., Pno., Guit., Guit., Guit., El. Guit., El. Guit., and A. Sax. The D. Set part begins with a triplet of eighth notes, followed by a series of eighth and sixteenth notes. The Cb. parts are mostly silent, with some rests. The El. B. part features a long, sustained note. The El. Guit. parts include complex notation with triplets, slurs, and dynamic markings. The Pno. part is mostly silent. The Guit. parts include complex notation with triplets, slurs, and dynamic markings. The El. Guit. parts are mostly silent. The A. Sax part is mostly silent.

26

D. Set

Cb.

Cb.

El. B.

El. Guit.

El. Guit.

El. Guit.

Pno.

Guit.

Guit.

Guit.

El. Guit.

El. Guit.

A. Sax.

27

28

27

D. Set

Cb.

Cb.

El. B.

El. Guit.

El. Guit.

El. Guit.

Pno.

Guit.

Guit.

Guit.

El. Guit.

El. Guit.

A. Sax.

Guit.

8

8

8

8

8

8

8

8

8

8

3

3

28

This page of the musical score, numbered 28, contains staves 14 through 27. The instruments and their parts are as follows:

- D. Set:** Continues with a melodic line in the treble clef, featuring eighth and sixteenth notes.
- Cb. (Contrabass):** Features a low, sustained note in the bass clef.
- El. B. (Electric Bass):** Plays a steady eighth-note bass line in the bass clef.
- El. Guit. (Electric Guitars):** Multiple staves showing various guitar parts, including a lead line with bends and a rhythm line with a steady eighth-note pattern.
- Pno. (Piano):** Provides harmonic support with chords and single notes.
- Guit. (Acoustic Guitar):** Features a complex, melodic line with many bends and vibrato in the treble clef.
- A. Sax. (Alto Saxophone):** Plays a melodic line in the treble clef, including a triplet of eighth notes.

Downloaded from www.midicities.com

29

D. Set

Cb.

Cb.

El. B.

El. Guit.

El. Guit.

El. Guit.

Pno.

Guit.

Guit.

Guit.

El. Guit.

El. Guit.

A. Sax.

3

3

3

30

D. Set

Cb.

Cb.

El. B.

El. Guit.

El. Guit.

El. Guit.

Pno.

Guit.

Guit.

Guit.

El. Guit.

El. Guit.

A. Sax.

Guit.

Downloaded from www.midicities.com

31

D. Set

Cb.

Cb.

El. B.

El. Guit.

El. Guit.

El. Guit.

Pno.

Guit.

Guit.

Guit.

El. Guit.

El. Guit.

A. Sax.

Guit.

Downloaded from www.midcities.com

3

33

D. Set

Cb.

Cb.

El. B.

El. Guit.

El. Guit.

El. Guit.

Pno.

Guit.

Guit.

Guit.

El. Guit.

El. Guit.

A. Sax.

3

3

34

D. Set

Cb.

Cb.

El. B.

El. Guit.

El. Guit.

El. Guit.

Pno.

Guit.

Guit.

Guit.

El. Guit.

El. Guit.

A. Sax.

35

D. Set

Cb.

Cb.

El. B.

El. Guit.

El. Guit.

El. Guit.

Pno.

Guit.

Guit.

Guit.

El. Guit.

El. Guit.

A. Sax.

Guit.

3

3

36

D. Set

Cb.

Cb.

El. B.

El. Guit.

El. Guit.

El. Guit.

Pno.

Guit.

Guit.

Guit.

El. Guit.

El. Guit.

A. Sax.

5

3

37

D. Set

Cb.

Cb.

El. B.

El. Guit.

El. Guit.

El. Guit.

Pno.

Guit.

Guit.

Guit.

El. Guit.

El. Guit.

A. Sax.

Guit.

Downloaded from www.midcities.com

38

D. Set

Cb.

Cb.

El. B.

El. Guit.

El. Guit.

El. Guit.

Pno.

Guit.

Guit.

Guit.

El. Guit.

El. Guit.

A. Sax.

Guit.

39

D. Set

Cb.

Cb.

El. B.

El. Guit.

El. Guit.

El. Guit.

Pno.

Guit.

Guit.

Guit.

El. Guit.

El. Guit.

A. Sax.

Guit.

Downloaded from www.midcities.com

Pdf downloaded from www.midicities.com

41

D. Set

Cb.

Cb.

El. B.

El. Guit.

El. Guit.

El. Guit.

Pno.

Guit.

Guit.

Guit.

El. Guit.

El. Guit.

A. Sax.

Guit.

Downloaded from www.midicities.com

42

D. Set

Cb.

Cb.

El. B.

El. Guit.

El. Guit.

El. Guit.

Pno.

Guit.

Guit.

Guit.

El. Guit.

El. Guit.

A. Sax.

Guit.

8

8

8

8

8

8

8

8

8

8

8

8

8

8

8

43

D. Set

Cb.

Cb.

El. B.

El. Guit.

El. Guit.

El. Guit.

Pno.

Guit.

Guit.

Guit.

El. Guit.

El. Guit.

A. Sax.

43

44

45

46

A. Sax. Pdf downloaded from www.midcities.com

45

D. Set

Cb.

Cb.

El. B.

El. Guit.

El. Guit.

El. Guit.

Pno.

Guit.

Guit.

Guit.

El. Guit.

El. Guit.

A. Sax.

46

D. Set

Cb.

Cb.

El. B.

El. Guit.

El. Guit.

El. Guit.

Pno.

Guit.

Guit.

Guit.

El. Guit.

El. Guit.

A. Sax.

Downloaded from www.midcities.com

Pdf downloaded from www.midicities.com

A. Sax. 

Pdf downloaded from www.midicities.com

49

D. Set

Cb.

Cb.

El. B.

El. Guit.

El. Guit.

El. Guit.

Pno.

Guit.

Guit.

Guit.

El. Guit.

El. Guit.

A. Sax.

Guit.

50

D. Set

Cb.

Cb.

El. B.

El. Guit.

El. Guit.

El. Guit.

Pno.

Guit.

Guit.

Guit.

El. Guit.

El. Guit.

A. Sax.

Guit.

51

D. Set

Cb.

Cb.

El. B.

El. Guit.

El. Guit.

El. Guit.

Pno.

Guit.

Guit.

Guit.

El. Guit.

El. Guit.

A. Sax.

Guit.

52

D. Set

Cb.

Cb.

El. B.

El. Guit.

El. Guit.

El. Guit.

Pno.

Guit.

Guit.

Guit.

El. Guit.

El. Guit.

A. Sax.

Guit.

53

D. Set

Cb.

Cb.

El. B.

El. Guit.

El. Guit.

El. Guit.

Pno.

Guit.

Guit.

Guit.

El. Guit.

El. Guit.

A. Sax.

53

D. Set

Cb.

Cb.

El. B.

El. Guit.

El. Guit.

El. Guit.

Pno.

Guit.

Guit.

Guit.

El. Guit.

El. Guit.

A. Sax.

54

D. Set

Cb.

Cb.

El. B.

El. Guit.

El. Guit.

El. Guit.

Pno.

Guit.

Guit.

Guit.

El. Guit.

El. Guit.

A. Sax.

Pdf download from www.midicities.com

56

D. Set

Cb.

Cb.

El. B.

El. Guit.

El. Guit.

El. Guit.

Pno.

Guit.

Guit.

Guit.

El. Guit.

El. Guit.

A. Sax.

57

57

D. Set

Cb.

Cb.

El. B.

El. Guit.

El. Guit.

El. Guit.

Pno.

Guit.

Guit.

Guit.

El. Guit.

El. Guit.

A Sax

Downloaded from www.midcities.com

58

D. Set

Cb.

Cb.

El. B.

El. Guit.

El. Guit.

El. Guit.

Pno.

Guit.

Guit.

Guit.

El. Guit.

El. Guit.

A. Sax.

59

D. Set

Cb.

Cb.

El. B.

El. Guit.

El. Guit.

El. Guit.

Pno.

Guit.

Guit.

Guit.

El. Guit.

El. Guit.

A. Sax.

The musical score for page 58, measures 59-62, is arranged in a multi-staff format. The instruments and their parts are as follows:

- D. Set:** Features a complex rhythmic pattern with many 'x' marks, indicating a specific playing technique.
- Cb. (Contrabass):** Two staves showing a simple bass line with a few notes and rests.
- El. B. (Electric Bass):** A single staff showing a simple bass line with a few notes and rests.
- El. Guit. (Electric Guitar):** Multiple staves showing a simple treble line with a few notes and rests.
- Pno. (Piano):** A single staff showing a simple treble line with a few notes and rests.
- Guit. (Guitar):** Multiple staves showing a complex rhythmic pattern with many 'x' marks, indicating a specific playing technique.
- A. Sax. (Alto Saxophone):** A single staff showing a simple treble line with a few notes and rests.

The key signature is one sharp (F#). The time signature is not explicitly shown but appears to be 4/4 based on the notation.

Pdf downloaded from www.midicities.com

Pdf downloaded from www.midcities.com
 A. Sax.

62

D. Set

Cb.

Cb.

El. B.

El. Guit.

El. Guit.

El. Guit.

Pno.

Guit.

Guit.

Guit.

El. Guit.

El. Guit.

A. Sax.

63

D. Set

Cb.

Cb.

El. B.

El. Guit.

El. Guit.

El. Guit.

Pno.

Guit.

Guit.

Guit.

El. Guit.

El. Guit.

A. Sax.

3

64

D. Set

Cb.

Cb.

El. B.

El. Guit.

El. Guit.

El. Guit.

Pno.

Guit.

Guit.

Guit.

El. Guit.

El. Guit.

A. Sax.

3

Pdf downloaded from www.medicities.com

 Pdf downloaded from www.midcities.com