

♩ = 146

Measures 1-12 of the musical score. The right hand plays a melody of eighth and quarter notes, while the left hand plays a bass line of eighth and quarter notes. The key signature has one flat (B-flat).

13

Measures 13-18 of the musical score. Measures 13-18 show a continuation of the melody in the right hand and a more active bass line in the left hand, featuring eighth notes and sixteenth notes.

19

Measures 19-20 of the musical score. Measures 19-20 continue the piece with a steady eighth-note pattern in the left hand and a melody in the right hand.

21

Measures 21-22 of the musical score. Measures 21-22 continue the piece with a steady eighth-note pattern in the left hand and a melody in the right hand.

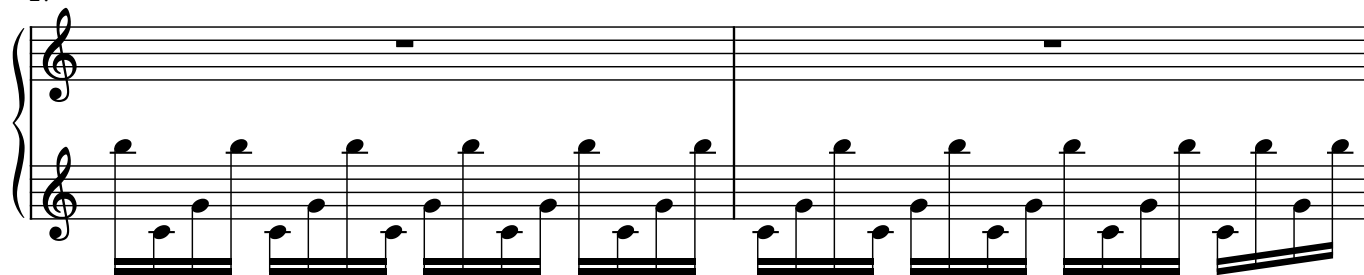
23

Measures 23-24 of the musical score. Measures 23-24 continue the piece with a steady eighth-note pattern in the left hand and a melody in the right hand.

25

Measures 25-26 of the musical score. Measures 25-26 continue the piece with a steady eighth-note pattern in the left hand and a melody in the right hand.

27



29



31

