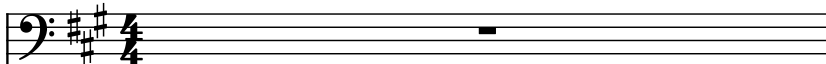
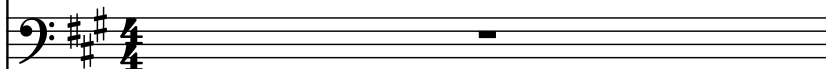


♩ = 92

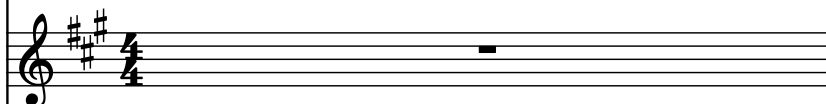
Fretless Electric Bass, "Show Me Love"



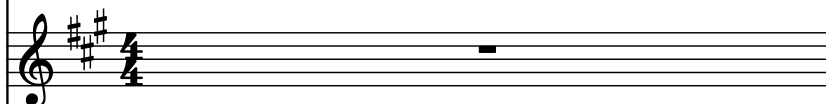
Piano, Sample SMF



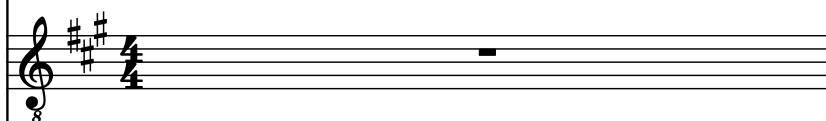
Electric Piano, Cat #TT1038



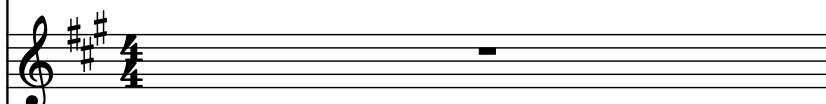
Flute, (c)1997 TRAN TRACKS



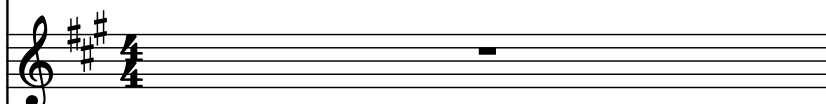
Acoustic Guitar, www.trantracks.com



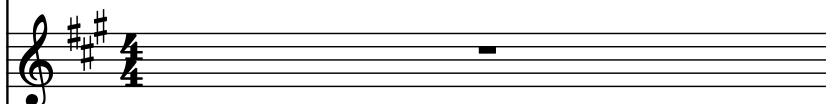
Brass Synthesizer, 800-473-0797



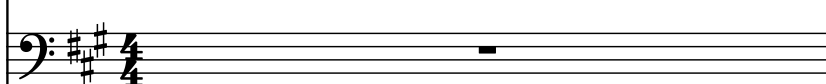
Hammond Organ, Programmed by



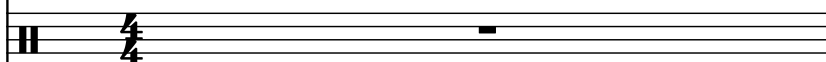
Pad Synthesizer, Tran WHitley



Sine Synthesizer, -



Drumset, -



2

Frtl. El. B.

Pno.

El. Pno.

Fl.

Guit.

Synth.

Hm. Org.

Synth.

Synth.

D. Set

2

3

Frtl. El. B.

Pno.

El. Pno.

Fl.

Guit.

Synth.

Hm. Org.

Synth.

Synth.

D. Set

The musical score for page 3 consists of ten staves, each representing a different instrument. The key signature is three sharps (F#, C#, G#). The Frtl. El. B. staff has a treble clef and a 3-measure rest. The Pno. staff has a bass clef and a 3-measure rest. The El. Pno. staff has a treble clef and a 3-measure rest. The Fl. staff has a treble clef and a 3-measure rest. The Guit. staff has a treble clef and a 3-measure rest. The Synth. staff has a treble clef and a 3-measure rest. The Hm. Org. staff has a treble clef and a 3-measure rest. The Synth. staff has a treble clef and a 3-measure rest. The Synth. staff has a bass clef and a 3-measure rest. The D. Set staff has a double bar line and a 3-measure rest.

4

Frtl. El. B.

Pno.

El. Pno.

Fl.

Guit.

Synth.

Hm. Org.

Synth.

Synth.

D. Set

5

Frtrl. El. B.

Pno.

El. Pno.

Fl.

Guit.

Synth.

Hm. Org.

Synth.

Synth.

D. Set

The musical score for page 5 consists of ten staves. The key signature is three sharps (F#, C#, G#). The Frtrl. El. B. staff is in bass clef and contains a melodic line with a half note, a quarter note, and a half note. The Pno. staff is in bass clef and contains a whole note chord. The El. Pno. staff is in treble clef and contains a whole note chord. The Fl. staff is in treble clef and contains a melodic line with a half note, a quarter note, and a half note. The Guit. staff is in treble clef and contains a whole note chord. The Synth. staff is in treble clef and contains a whole note chord. The Hm. Org. staff is in treble clef and contains a whole note chord. The Synth. staff is in treble clef and contains a whole note chord. The Synth. staff is in bass clef and contains a melodic line with a half note, a quarter note, and a half note. The D. Set staff is in bass clef and contains a rhythmic pattern with eighth notes and a half note.

6

Frtl. El. B.

Pno.

El. Pno.

Fl.

Guit.

Synth.

Hm. Org.

Synth.

Synth.

D. Set

The musical score for page 6 consists of ten staves. The top staff, Frtl. El. B., is in bass clef and shows a melodic line starting on a half note. The second staff, Pno., is in bass clef and shows a single chord. The third staff, El. Pno., is in treble clef and shows a sustained chord. The fourth staff, Fl., is in treble clef and shows a melodic line. The fifth staff, Guit., is in treble clef and shows a single chord. The sixth staff, Synth., is in treble clef and shows a single chord. The seventh staff, Hm. Org., is in treble clef and shows a melodic line. The eighth staff, Synth., is in treble clef and shows a sustained chord. The ninth staff, Synth., is in bass clef and shows a melodic line. The bottom staff, D. Set, is in bass clef and shows a rhythmic pattern with eighth notes and rests.

7

Frtl. El. B.

Pno.

El. Pno.

Fl.

Guit.

Synth.

Hm. Org.

Synth.

Synth.

D. Set

The musical score for page 7 consists of ten staves. The top staff, Frtl. El. B., is in bass clef and shows a melodic line starting on G4, moving up to B4 and then down. The second staff, Pno., is in bass clef and contains a whole rest. The third staff, El. Pno., is in treble clef and features a complex texture with chords and a long note. The fourth staff, Fl., is in treble clef and has a melodic line starting on G4, moving up to B4 and then down. The fifth staff, Guit., is in treble clef and contains a whole rest. The sixth staff, Synth., is in treble clef and contains a whole rest. The seventh staff, Hm. Org., is in treble clef and contains a whole rest. The eighth staff, Synth., is in treble clef and has a complex texture with chords and a long note. The ninth staff, Synth., is in bass clef and has a melodic line starting on G4, moving up to B4 and then down. The tenth staff, D. Set, is in bass clef and contains a complex texture with chords and a long note.

8

Frtl. El. B.

Pno.

El. Pno.

Fl.

Guit.

Synth.

Hm. Org.

Synth.

Synth.

D. Set

The musical score for page 8 consists of ten staves. The instruments are: Frtl. El. B. (Fretless Electric Bass), Pno. (Piano), El. Pno. (Electric Piano), Fl. (Flute), Guit. (Guitar), Synth. (Synthesizer), Hm. Org. (Hammond Organ), Synth. (Synthesizer), Synth. (Synthesizer), and D. Set (Drum Set). The key signature is three sharps (F#, C#, G#). The time signature is 4/4. The score includes various musical notations such as eighth notes, quarter notes, half notes, and rests. The Frtl. El. B. staff starts with a quarter note, followed by a half note, and then a quarter note. The Pno. staff has a whole rest. The El. Pno. staff has a quarter note, followed by a half note, and then a quarter note. The Fl. staff has a quarter note, followed by a half note, and then a quarter note. The Guit. staff has a whole rest. The Synth. staff has a whole rest. The Hm. Org. staff has a quarter note, followed by a half note, and then a quarter note. The Synth. staff has a quarter note, followed by a half note, and then a quarter note. The Synth. staff has a quarter note, followed by a half note, and then a quarter note. The D. Set staff has a quarter note, followed by a half note, and then a quarter note.



9

Frtrl. El. B.

Pno.

El. Pno.

Fl.

Guit.

Synth.

Hm. Org.

Synth.

Synth.

D. Set

The musical score for page 9 consists of ten staves. The instruments are: Frtrl. El. B. (Bass), Pno. (Piano), El. Pno. (Electric Piano), Fl. (Flute), Guit. (Guitar), Synth. (Synthesizer), Hm. Org. (Hammond Organ), Synth. (Synthesizer), Synth. (Synthesizer), and D. Set (Drum Set). The key signature is three sharps (F#, C#, G#). The Frtrl. El. B. staff has a melodic line starting with a half note F#4, followed by quarter notes G#4, A4, and B4, and ending with a quarter note F#4. The Pno. staff has a whole rest. The El. Pno. staff has a chord of F#4, C#5, and G#5, followed by a half note chord of F#4, C#5, and G#5, and ending with a quarter note F#4. The Fl. staff has a quarter note F#4, followed by quarter notes G#4, A4, and B4, and ending with a quarter note F#4. The Guit. staff has a quarter rest, followed by quarter notes F#4 and G#4, and ending with a quarter rest. The Synth. staff has a whole rest. The Hm. Org. staff has a half note chord of F#4 and C#5, followed by a half note chord of F#4 and C#5, and ending with a half note chord of F#4 and C#5. The Synth. staff has a half note chord of F#4 and C#5, followed by a half note chord of F#4 and C#5, and ending with a half note chord of F#4 and C#5. The Synth. staff has a half note F#4, followed by quarter notes G#4, A4, and B4, and ending with a quarter note F#4. The D. Set staff has a complex pattern of eighth and sixteenth notes, including a double bar line and a repeat sign.

10

Frtl. El. B.

Pno.

El. Pno.

Fl.

Guit.

Synth.

Hm. Org.

Synth.

Synth.

D. Set

11

Frtrl. El. B.

Pno.

El. Pno.

Fl.

Guit.

Synth.

Hm. Org.

Synth.

Synth.

D. Set

The musical score for page 11 consists of ten staves. The key signature is three sharps (F#, C#, G#). The Frtrl. El. B. staff has a melody in the bass clef. The Pno. staff is empty. The El. Pno. staff has a chordal accompaniment. The Fl. staff has a melody in the treble clef. The Guit. staff has a melody in the treble clef. The Synth. staff is empty. The Hm. Org. staff has a chordal accompaniment. The Synth. staff has a melody in the treble clef. The Synth. staff has a melody in the bass clef. The D. Set staff has a complex rhythmic pattern with many beamed notes and rests.

Frtrl. El. B.

Pno.

El. Pno.

Fl.

Guit.

Synth.

Hm. Org.

Synth.

Synth.

D. Set

13

Frtrl. El. B.

Pno.

El. Pno.

Fl.

Guit.

Synth.

Hm. Org.

Synth.

Synth.

D. Set

The musical score for page 13 consists of ten staves. The key signature is three sharps (F#, C#, G#). The time signature is 4/4. The Frtrl. El. B. staff has a melodic line starting on a half note. The Pno. staff has a single note on the fourth beat. The El. Pno. staff has a chord on the first beat and a sustained chord with a slur. The Fl. staff has a melodic line with a slur. The Guit. staff has a single note on the second beat. The Synth. staff has a single note on the second beat. The Hm. Org. staff has a sustained chord with a slur. The Synth. staff has a sustained chord with a slur. The Synth. staff has a melodic line with a slur. The D. Set staff has a rhythmic pattern with eighth notes and rests.

14

Frtl. El. B.

Pno.

El. Pno.

Fl.

Guit.

Synth.

Hm. Org.

Synth.

Synth.

D. Set

15

Frtrl. El. B.

Pno.

El. Pno.

Fl.

Guit.

Synth.

Hm. Org.

Synth.

Synth.

D. Set

The musical score for page 15 consists of ten staves. The key signature is three sharps (F#, C#, G#). The Frtrl. El. B. staff has a melodic line starting on a whole note and moving up. The Pno. staff is mostly silent. The El. Pno. staff has a complex texture with many beamed notes and ties. The Fl. staff has a melodic line with ties. The Guit. staff has a simple melodic line. The Synth. staff is mostly silent. The Hm. Org. staff has a simple melodic line. The Synth. staff has a complex texture with many beamed notes and ties. The Synth. staff has a complex texture with many beamed notes and ties. The D. Set staff has a complex texture with many beamed notes and ties.

Frtrl. El. B.

Pno.

El. Pno.

Fl.

Guit.

Synth.

Hm. Org.

Synth.

Synth.

D. Set



17

Frtrl. El. B.

Pno.

El. Pno.

Fl.

Guit.

Synth.

Hm. Org.

Synth.

Synth.

D. Set

The musical score for page 17 consists of ten staves. The first staff, Frtrl. El. B., is in bass clef with a key signature of three sharps (F#, C#, G#) and contains a melodic line with a half note, a quarter note, and a dotted quarter note. The second staff, Pno., is in bass clef with the same key signature and contains a whole rest. The third staff, El. Pno., is in treble clef with the same key signature and contains a block chord followed by a sustained chord. The fourth staff, Fl., is in treble clef with the same key signature and contains a melodic line with a half note, a quarter note, and a dotted quarter note. The fifth staff, Guit., is in treble clef with the same key signature and contains a melodic line with a half note, a quarter note, and a dotted quarter note. The sixth staff, Synth., is in treble clef with the same key signature and contains a whole rest. The seventh staff, Hm. Org., is in treble clef with the same key signature and contains a block chord followed by a sustained chord. The eighth staff, Synth., is in treble clef with the same key signature and contains a block chord followed by a sustained chord. The ninth staff, Synth., is in bass clef with the same key signature and contains a melodic line with a half note, a quarter note, and a dotted quarter note. The tenth staff, D. Set, is in common time and contains a complex rhythmic pattern with various note values and rests.

18

Frtl. El. B.

Pno.

El. Pno.

Fl.

Guit.

Synth.

Hm. Org.

Synth.

Synth.

D. Set

19

Frtrl. El. B.

Pno.

El. Pno.

Fl.

Guit.

Synth.

Hm. Org.

Synth.

Synth.

D. Set

Frtrl. El. B.

Pno.

El. Pno.

Fl.

Guit.

Synth.

Hm. Org.

Synth.

Synth.

D. Set

21

Frtrl. El. B.

Pno.

El. Pno.

Fl.

Guit.

Synth.

Hm. Org.

Synth.

Synth.

D. Set

Frtrl. El. B.

Pno.

El. Pno.

Fl.

Guit.

Synth.

Hm. Org.

Synth.

Synth.

D. Set

23

Frtrl. El. B.

Pno.

El. Pno.

Fl.

Guit.

Synth.

Hm. Org.

Synth.

Synth.

D. Set

Frtrl. El. B.

Pno.

El. Pno.

Fl.

Guit.

Synth.

Hm. Org.

Synth.

Synth.

D. Set

The musical score for page 24 consists of ten staves. The first staff, labeled 'Frtrl. El. B.', is in bass clef with a key signature of three sharps (F#, C#, G#) and contains a melodic line with eighth and quarter notes. The second staff, 'Pno.', is in bass clef with the same key signature and is mostly empty. The third staff, 'El. Pno.', is in treble clef with the same key signature, featuring a sustained chord. The fourth staff, 'Fl.', is in treble clef with the same key signature, showing a melodic line with eighth notes. The fifth staff, 'Guit.', is in treble clef with the same key signature and is mostly empty. The sixth staff, 'Synth.', is in treble clef with the same key signature and is mostly empty. The seventh staff, 'Hm. Org.', is in treble clef with the same key signature, featuring a sustained chord. The eighth staff, 'Synth.', is in treble clef with the same key signature, showing a melodic line with eighth notes. The ninth staff, 'Synth.', is in bass clef with the same key signature, showing a melodic line with eighth notes. The tenth staff, 'D. Set', is in common time and features a drum set pattern with eighth and quarter notes.



25

Frtrl. El. B.

Pno.

El. Pno.

Fl.

Guit.

Synth.

Hm. Org.

Synth.

Synth.

D. Set

Frtrl. El. B.

Pno.

El. Pno.

Fl.

Guit.

Synth.

Hm. Org.

Synth.

Synth.

D. Set

27

Frtrl. El. B.

Pno.

El. Pno.

Fl.

Guit.

Synth.

Hm. Org.

Synth.

Synth.

D. Set

The musical score for page 27 consists of ten staves. The key signature is three sharps (F#, C#, G#). The Frtrl. El. B. staff has a melody in the bass clef. The Pno. staff is mostly silent. The El. Pno. staff has chords and a long sustain. The Fl. staff has a melody with some rests. The Guit. staff has a simple harmonic line. The Synth. staff is mostly silent. The Hm. Org. staff has chords and a long sustain. The Synth. staff has a melody with a long sustain. The Synth. staff has a melody in the bass clef. The D. Set staff has a complex rhythmic pattern with many notes and rests.

Frtrl. El. B.

Pno.

El. Pno.

Fl.

Guit.

Synth.

Hm. Org.

Synth.

Synth.

D. Set

The musical score for page 28 consists of ten staves. The key signature is three sharps (F#, C#, G#). The instruments are: Frtrl. El. B. (Bass), Pno. (Piano), El. Pno. (Electric Piano), Fl. (Flute), Guit. (Guitar), Synth. (Synthesizer), Hm. Org. (Hammond Organ), Synth. (Synthesizer), Synth. (Synthesizer), and D. Set (Drum Set). The Frtrl. El. B. staff has a melodic line starting with a quarter note, followed by eighth notes, and ending with a quarter note. The Pno. staff has a whole rest. The El. Pno. staff has a chord of F# and C# in the first measure, followed by a sustained chord of F#, C#, and G# in the second measure. The Fl. staff has a quarter rest in the first measure, followed by a melodic line of eighth notes. The Guit. staff has a whole rest. The Synth. staff has a whole rest. The Hm. Org. staff has a chord of F# and C# in the first measure, followed by a sustained chord of F#, C#, and G# in the second measure. The Synth. staff has a chord of F# and C# in the first measure, followed by a melodic line of eighth notes. The Synth. staff has a melodic line of eighth notes. The D. Set staff has a rhythmic pattern of eighth notes and quarter notes, with some notes marked with an 'x'.

29

Frtrl. El. B.

Pno.

El. Pno.

Fl.

Guit.

Synth.

Hm. Org.

Synth.

Synth.

D. Set

Frtrl. El. B.

Pno.

El. Pno.

Fl.

Guit.

Synth.

Hm. Org.

Synth.

Synth.

D. Set

31

Frtrl. El. B.

Pno.

El. Pno.

Fl.

Guit.

Synth.

Hm. Org.

Synth.

Synth.

D. Set

Frtrl. El. B.

Pno.

El. Pno.

Fl.

Guit.

Synth.

Hm. Org.

Synth.

Synth.

D. Set

The musical score for page 32 consists of ten staves. The key signature is three sharps (F#, C#, G#). The Frtrl. El. B. staff (bass clef) has a melody starting with a quarter note, followed by a half note, and then a quarter note. The Pno. staff (bass clef) is empty. The El. Pno. staff (treble clef) has a sustained chord in the treble clef. The Fl. staff (treble clef) has a melody starting with a quarter note, followed by a half note, and then a quarter note. The Guit. staff (treble clef) is empty. The Synth. staff (treble clef) is empty. The Hm. Org. staff (treble clef) has a sustained chord in the treble clef. The Synth. staff (treble clef) has a sustained chord in the treble clef. The Synth. staff (bass clef) has a melody starting with a quarter note, followed by a half note, and then a quarter note. The D. Set staff (bass clef) has a drum pattern starting with a quarter note, followed by a half note, and then a quarter note.



33

Frtrl. El. B.

Pno.

El. Pno.

Fl.

Guit.

Synth.

Hm. Org.

Synth.

Synth.

D. Set

The musical score for page 33 consists of ten staves. The instruments are: Frtrl. El. B. (Bass), Pno. (Piano), El. Pno. (Electric Piano), Fl. (Flute), Guit. (Guitar), Synth. (Synthesizer), Hm. Org. (Hammond Organ), Synth. (Synthesizer), Synth. (Synthesizer), and D. Set (Drum Set). The key signature is three sharps (F#, C#, G#). The Frtrl. El. B. staff has a melodic line starting with a half note F#4, followed by quarter notes G#4, A4, and B4, then a half note C#5, and a final quarter note B4. The Pno. staff has a whole rest. The El. Pno. staff has a chord of F#4, C#5, and G#5, followed by a half note chord of F#4, C#5, and G#5, and a final quarter note chord of F#4, C#5, and G#5. The Fl. staff has a half note F#4, followed by quarter notes G#4, A4, and B4, then a half note C#5, and a final quarter note B4. The Guit. staff has a half note F#4, followed by quarter notes G#4, A4, and B4, then a half note C#5, and a final quarter note B4. The Synth. staff has a whole rest. The Hm. Org. staff has a half note chord of F#4, C#5, and G#5, followed by a half note chord of F#4, C#5, and G#5, and a final quarter note chord of F#4, C#5, and G#5. The Synth. staff has a half note chord of F#4, C#5, and G#5, followed by a half note chord of F#4, C#5, and G#5, and a final quarter note chord of F#4, C#5, and G#5. The Synth. staff has a half note chord of F#4, C#5, and G#5, followed by a half note chord of F#4, C#5, and G#5, and a final quarter note chord of F#4, C#5, and G#5. The D. Set staff has a complex pattern of eighth and sixteenth notes, including a double bar line and a final quarter note.