

♩ = 140

2

4

6

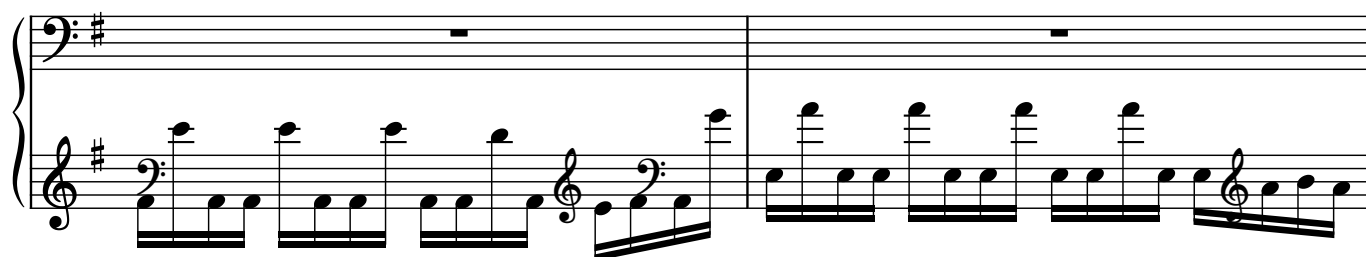
8

10

12



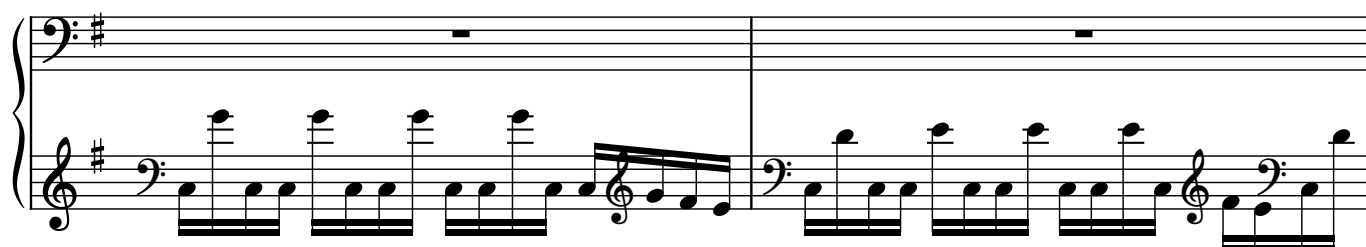
14



16



17



19



21



23

A musical score for the song 'The Rose Tree'. It features a grand staff with a treble and bass clef. The key signature has one sharp (F#). The melody is written in the treble clef, and the bass line is in the bass clef. The music consists of a single line of notes, likely representing a vocal melody. The notes are: C4 (whole note), D4 (quarter note), E4 (quarter note), F#4 (quarter note), G4 (quarter note), A4 (quarter note), B4 (quarter note), C5 (quarter note), B4 (quarter note), A4 (quarter note), G4 (quarter note), F#4 (quarter note), E4 (quarter note), D4 (quarter note), C4 (whole note). The score is presented in a clean, black-and-white format.

24

A musical score for the song 'The Rose Tree'. The score is written for a piano, with a grand staff consisting of a right-hand treble staff and a left-hand bass staff. The key signature is one sharp (F#), and the time signature is 4/4. The melody is primarily in the right hand, featuring a series of eighth and sixteenth notes. The left hand provides a harmonic accompaniment with chords and single notes. The score includes a repeat sign at the beginning and a double bar line at the end.