

$\text{♩} = 130$

Measures 1-2: Treble clef, key of B-flat major (two flats), 4/4 time. The right hand plays a continuous eighth-note pattern: B-flat, A, G, F, E, D, C, B-flat, ascending and then descending. The left hand is silent.

3

Measures 3-4: Treble clef, key of B-flat major (two flats), 4/4 time. The right hand continues the eighth-note pattern from measure 1. The left hand is silent.

5

Measures 5-6: Treble clef, key of B-flat major (two flats), 4/4 time. The right hand continues the eighth-note pattern from measure 1. The left hand is silent.

7

Measures 7-8: Treble clef, key of B-flat major (two flats), 4/4 time. The right hand continues the eighth-note pattern from measure 1. The left hand is silent.

10

Measures 9-16: Bass clef, key of B-flat major (two flats), 4/4 time. Measure 9: B-flat, A, G, F, E, D, C, B-flat. Measure 10: B-flat, A, G, F, E, D, C, B-flat. Measure 11: B-flat, A, G, F, E, D, C, B-flat. Measure 12: B-flat, A, G, F, E, D, C, B-flat. Measure 13: B-flat, A, G, F, E, D, C, B-flat. Measure 14: B-flat, A, G, F, E, D, C, B-flat. Measure 15: B-flat, A, G, F, E, D, C, B-flat. Measure 16: B-flat, A, G, F, E, D, C, B-flat.

18

Measures 17-24: Bass clef, key of B-flat major (two flats), 4/4 time. Measure 17: B-flat, A, G, F, E, D, C, B-flat. Measure 18: B-flat, A, G, F, E, D, C, B-flat. Measure 19: B-flat, A, G, F, E, D, C, B-flat. Measure 20: B-flat, A, G, F, E, D, C, B-flat. Measure 21: B-flat, A, G, F, E, D, C, B-flat. Measure 22: B-flat, A, G, F, E, D, C, B-flat. Measure 23: B-flat, A, G, F, E, D, C, B-flat. Measure 24: B-flat, A, G, F, E, D, C, B-flat.

27

System 1 (Measures 27-35): Treble clef contains whole notes (F4, G4, A4, Bb4, C5, D5) with a slur. Bass clef contains a half-note accompaniment (F3, C3) with a slur, followed by eighth-note patterns (F4, G4, A4, Bb4, C5, D5).

36

System 2 (Measures 36-39): Treble clef contains eighth-note patterns (F4, G4, A4, Bb4, C5, D5). Bass clef contains eighth-note patterns (F4, G4, A4, Bb4, C5, D5) and a final chord (F4, G4, A4, Bb4, C5, D5).

40

System 3 (Measures 40-43): Treble clef contains eighth-note patterns (F4, G4, A4, Bb4, C5, D5). Bass clef contains eighth-note patterns (F4, G4, A4, Bb4, C5, D5).

44

System 4 (Measures 44-47): Treble clef contains eighth-note patterns (F4, G4, A4, Bb4, C5, D5). Bass clef contains eighth-note patterns (F4, G4, A4, Bb4, C5, D5) and a final chord (F4, G4, A4, Bb4, C5, D5).

48

System 5 (Measures 48-51): Treble clef contains eighth-note patterns (F4, G4, A4, Bb4, C5, D5). Bass clef contains eighth-note patterns (F4, G4, A4, Bb4, C5, D5).

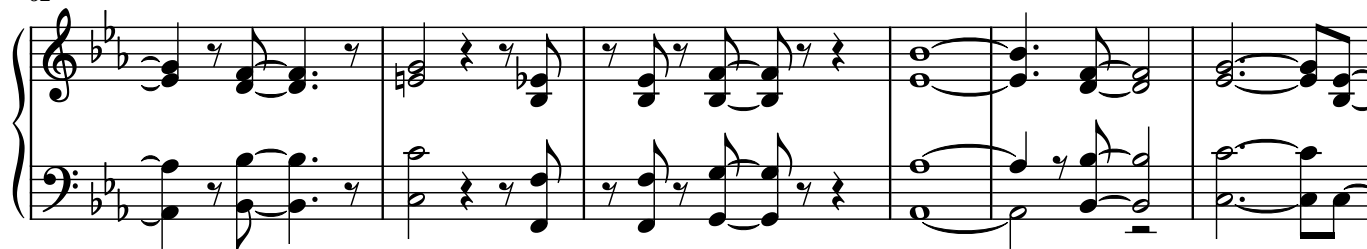
52

System 6 (Measures 52-55): Treble clef contains eighth-note patterns (F4, G4, A4, Bb4, C5, D5). Bass clef contains eighth-note patterns (F4, G4, A4, Bb4, C5, D5) and a final chord (F4, G4, A4, Bb4, C5, D5).

56



62



68



76

