

♩ = 105

Effect Synthesizer



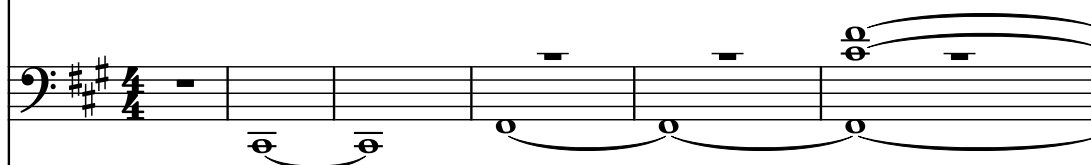
Effect Synthesizer



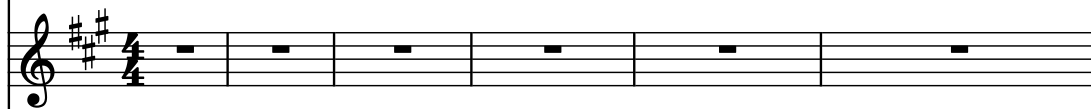
Electric Bass



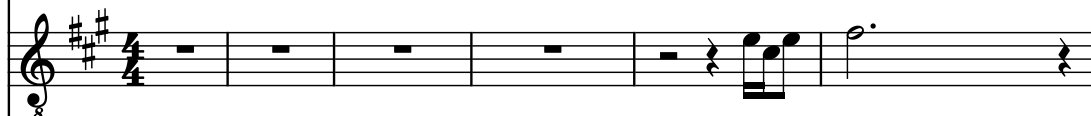
Pad Synthesizer



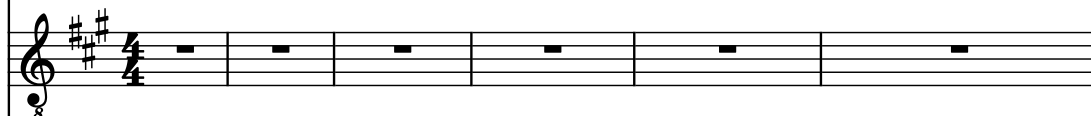
Violins



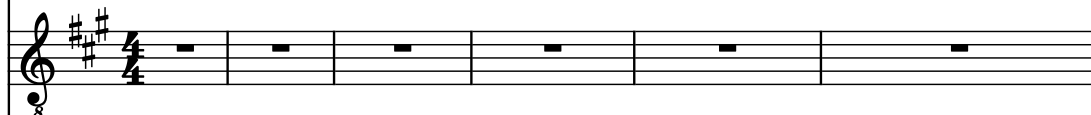
Acoustic Guitar



Electric Guitar



Electric Guitar



Violins



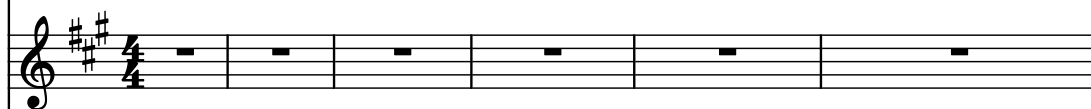
Drumset



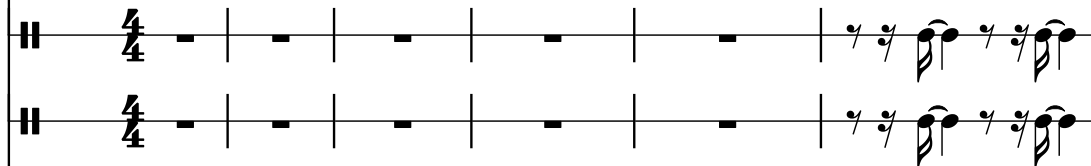
Hammond Organ



Harpsichord



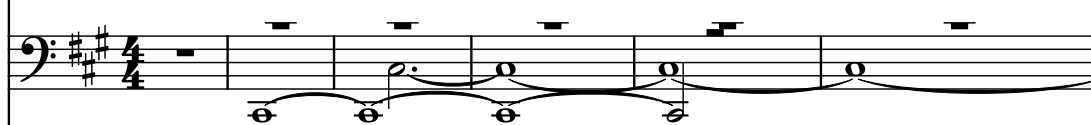
Concert Snare Drum



Concert Snare Drum



Pad Synthesizer



Effect Synthesizer



7

Synth.

Synth.

El. B.

Synth.

Vlns.

Guit.

El. Guit.

El. Guit.

Vlns.

D. Set

Hm. Org.

Hch.

Con. Sn.

Con. Sn.

Synth.

Synth.

9

Musical score for page 9, featuring multiple staves for Synth, El. B., Vlns., Guit., El. Guit., D. Set, Hm. Org., Hch., Con. Sn., and Synths. The score is written in treble and bass clefs with a key signature of three sharps (F#, C#, G#). The notation includes various musical symbols such as notes, rests, and dynamic markings.

The staves are labeled as follows:

- Synth.
- Synth.
- El. B.
- Synth.
- Vlns.
- Guit.
- El. Guit.
- El. Guit.
- Vlns.
- D. Set
- Hm. Org.
- Hch.
- Con. Sn.
- Con. Sn.
- Synth.
- Synth.

The score includes various musical notations, including notes, rests, and dynamic markings. The bottom staff (Synth.) features a complex, multi-measure rest.

11

Synth.

Synth.

El. B.

Synth.

Vlins.

Guit.

El. Guit.

El. Guit.

Vlins.

D. Set

Hm. Org.

Hch.

Con. Sn.

Con. Sn.

Synth.

Synth.

13

13

Synth.

Synth.

El. B.

Synth.

Vlins.

Guit.

El. Guit.

El. Guit.

Vlins.

D. Set

Hm. Org.

Hch.

Con. Sn.

Con. Sn.

Synth.

Synth.

15

Synth.

Synth.

El. B.

Synth.

Vlins.

Guit.

El. Guit.

El. Guit.

Vlins.

D. Set

Hm. Org.

Hch.

Con. Sn.

Con. Sn.

Synth.

Synth.

17

17

Synth.

Synth.

El. B.

Synth.

Vlns.

Guit.

El. Guit.

El. Guit.

Vlns.

D. Set

Hm. Org.

Hch.

Con. Sn.

Con. Sn.

Synth.

Synth.

This musical score for page 17 features a variety of instruments. The top staves include two Synth parts in treble clef with a key signature of two sharps (F# and C#), an El. B. (Electric Bass) in bass clef, another Synth in treble clef, and two Vlns. (Violins) in treble clef. The middle section contains a Guit. (Guitar) in treble clef with a key signature change to one sharp (F#), an El. Guit. (Electric Guitar) in treble clef, another El. Guit. in treble clef, and a second Vlns. in treble clef. The bottom section includes a D. Set (Drum Set) in bass clef, an Hm. Org. (Hammond Organ) in bass clef, an Hch. (Horn) in treble clef, two Con. Sn. (Congas) in bass clef, and two Synths in bass clef. The score is divided into two measures, with various musical notations including notes, rests, and dynamic markings.

19

Synth.

Synth.

El. B.

Synth.

Vlns.

Guit.

El. Guit.

El. Guit.

Vlns.

D. Set

Hm. Org.

Hch.

Con. Sn.

Con. Sn.

Synth.

Synth.

22

Musical score for page 22, featuring multiple staves for various instruments. The score is written in G major (one sharp) and 4/4 time. The instruments and their parts are as follows:

- Synth. (Top):** Two staves, both with whole rests in both measures.
- El. B. (Electric Bass):** Bass clef. Measure 1: D4 (quarter), G3 (quarter), F3 (quarter), E3 (quarter). Measure 2: D4 (half), G4 (quarter), F4 (quarter), E4 (quarter).
- Synth. (Third):** Treble clef. Measure 1: G4 (chord), B4 (chord), D5 (chord). Measure 2: G4 (chord), B4 (chord), D5 (chord).
- Vlns. (Violins):** Treble clef. Measure 1: G4 (quarter), A4 (quarter), B4 (quarter), C5 (quarter). Measure 2: G4 (quarter), A4 (quarter), B4 (quarter), C5 (quarter).
- Guit. (Guitar):** Treble clef. Measure 1: Whole rest. Measure 2: G4 (quarter), A4 (quarter), B4 (quarter), C5 (quarter).
- El. Guit. (Electric Guitar):** Treble clef. Measure 1: Whole rest. Measure 2: Whole rest.
- El. Guit. (Electric Guitar):** Treble clef. Measure 1: Whole rest. Measure 2: Whole rest.
- Vlns. (Violins):** Treble clef. Measure 1: Whole rest. Measure 2: Whole rest.
- D. Set (Drum Set):** Treble clef. Measure 1: G4 (quarter), A4 (quarter), B4 (quarter), C5 (quarter). Measure 2: G4 (quarter), A4 (quarter), B4 (quarter), C5 (quarter).
- Hm. Org. (Hammond Organ):** Bass clef. Measure 1: D4 (quarter), G3 (quarter), F3 (quarter), E3 (quarter). Measure 2: D4 (half), G4 (quarter), F4 (quarter), E4 (quarter).
- Hch. (Horn):** Treble clef. Measure 1: Whole rest. Measure 2: Whole rest.
- Con. Sn. (Conga Snare):** Two staves, both with whole rests in both measures.
- Synth. (Bottom):** Bass clef. Measure 1: Whole rest. Measure 2: Whole rest.

24

Synth.

Synth.

El. B.

Synth.

Vlns.

Guit.

El. Guit.

El. Guit.

Vlns.

D. Set

Hm. Org.

Hch.

Con. Sn.

Con. Sn.

Synth.

Synth.

27

27

Synth.

Synth.

El. B.

Synth.

Vlins.

Guit.

El. Guit.

El. Guit.

Vlins.

D. Set

Hm. Org.

Hch.

Con. Sn.

Con. Sn.

Synth.

Synth.

29

Musical score for page 12, measure 29. The score features 15 staves with various instruments including Synths, Electric Bass, Violins, Guitar, Electric Guitars, Double Bass, Harmonium Organ, Horn, Congas, and another Synth. The key signature is three sharps (F#, C#, G#). The Electric Bass and Violin parts are active, while most other instruments are silent.

29

Synth.

Synth.

El. B.

Synth.

Vlins.

Guit.

El. Guit.

El. Guit.

Vlins.

D. Set

Hm. Org.

Hch.

Con. Sn.

Con. Sn.

Synth.

Synth.

32

Synth.

Synth.

El. B.

Synth.

Vlns.

Guit.

El. Guit.

El. Guit.

Vlns.

D. Set

Hm. Org.

Hch.

Con. Sn.

Con. Sn.

Synth.

Synth.

35

Synth.

Synth.

El. B.

Synth.

Vlns.

Guit.

El. Guit.

El. Guit.

Vlns.

D. Set

Hm. Org.

Hch.

Con. Sn.

Con. Sn.

Synth.

Synth.

37

The musical score for measures 37-40 is arranged in 16 staves. The key signature is three sharps (F#, C#, G#). The instruments and their parts are as follows:

- Synth. (Staff 1):** Treble clef. Measure 37 has a whole note chord of F#4, C#5, and G#5. Measures 38-40 are rests.
- Synth. (Staff 2):** Treble clef. Measures 37-40 are rests.
- El. B. (Staff 3):** Bass clef. Measure 37 has a dotted quarter note F#2. Measure 38 has an eighth note G#2, a quarter note A#2, and a dotted quarter note B#2. Measure 39 has a dotted quarter note C#3, an eighth note D#3, and a quarter note E#3. Measure 40 has a dotted quarter note F#3, an eighth note G#3, and a quarter note A#3.
- Synth. (Staff 4):** Treble clef. Measure 37 has a whole note chord of F#4, C#5, and G#5. Measures 38-40 are rests.
- Vlns. (Staff 5):** Treble clef. Measure 37 has a dotted quarter note F#4. Measure 38 has a quarter rest. Measure 39 has an eighth note G#4, a quarter note A#4, and a dotted quarter note B#4. Measure 40 has a dotted quarter note C#5, an eighth note D#5, and a quarter note E#5.
- Guit. (Staff 6):** Treble clef. Measures 37-40 are rests.
- El. Guit. (Staff 7):** Treble clef. Measures 37-40 are rests.
- El. Guit. (Staff 8):** Treble clef. Measure 37 has a whole note chord of F#4, C#5, and G#5. Measure 38 has a whole note chord of F#4, C#5, and G#5. Measure 39 has a whole note chord of F#4, C#5, and G#5. Measure 40 has a whole note chord of F#4, C#5, and G#5.
- Vlns. (Staff 9):** Treble clef. Measure 37 has a dotted quarter note F#4. Measure 38 has a quarter rest. Measure 39 has an eighth note G#4, a quarter note A#4, and a dotted quarter note B#4. Measure 40 has a dotted quarter note C#5, an eighth note D#5, and a quarter note E#5.
- D. Set (Staff 10):** Treble clef. Measure 37 has a dotted quarter note F#4, an eighth note G#4, and a quarter note A#4. Measure 38 has a dotted quarter note B#4, an eighth note C#5, and a quarter note D#5. Measure 39 has a dotted quarter note E#5, an eighth note F#5, and a quarter note G#5. Measure 40 has a dotted quarter note A#5, an eighth note B#5, and a quarter note C#6.
- Hm. Org. (Staff 11):** Bass clef. Measure 37 has a dotted quarter note F#2. Measure 38 has a dotted quarter note G#2, an eighth note A#2, and a quarter note B#2. Measure 39 has a dotted quarter note C#3, an eighth note D#3, and a quarter note E#3. Measure 40 has a dotted quarter note F#3, an eighth note G#3, and a quarter note A#3.
- Hch. (Staff 12):** Treble clef. Measures 37-40 are rests.
- Con. Sn. (Staff 13):** Treble clef. Measures 37-40 are rests.
- Con. Sn. (Staff 14):** Treble clef. Measures 37-40 are rests.
- Synth. (Staff 15):** Bass clef. Measures 37-40 are rests.
- Synth. (Staff 16):** Bass clef. Measures 37-40 are rests.

39

Synth.

Synth.

El. B.

Synth.

Vlns.

Guit.

El. Guit.

El. Guit.

Vlns.

D. Set

Hm. Org.

Hch.

Con. Sn.

Con. Sn.

Synth.

Synth.

41

Synth.

Synth.

El. B.

Synth.

Vlins.

Guit.

El. Guit.

El. Guit.

Vlins.

D. Set

Hm. Org.

Hch.

Con. Sn.

Con. Sn.

Synth.

Synth.

44

Synth.

Synth.

El. B.

Synth.

Vlins.

Guit.

El. Guit.

El. Guit.

Vlins.

D. Set

Hm. Org.

Hch.

Con. Sn.

Con. Sn.

Synth.

Synth.

46

The musical score for page 46 is arranged in 15 staves. The instruments and their parts are as follows:

- Synth. (Staff 1):** Treble clef, key of D major. Part 1: Quarter notes D5, E5, F#5, G5, A5, B5, C6, D6. Part 2: Quarter notes D5, E5, F#5, G5, A5, B5, C6, D6.
- Synth. (Staff 2):** Treble clef, key of D major. Part 1: Quarter notes D5, E5, F#5, G5, A5, B5, C6, D6. Part 2: Quarter notes D5, E5, F#5, G5, A5, B5, C6, D6.
- El. B. (Staff 3):** Bass clef, key of D major. Part 1: Quarter notes D4, E4, F#4, G4, A4, B4, C5, D5. Part 2: Quarter notes D4, E4, F#4, G4, A4, B4, C5, D5.
- Synth. (Staff 4):** Treble clef, key of D major. Part 1: Quarter notes D5, E5, F#5, G5, A5, B5, C6, D6. Part 2: Quarter notes D5, E5, F#5, G5, A5, B5, C6, D6.
- Vlns. (Staff 5):** Treble clef, key of D major. Part 1: Quarter notes D5, E5, F#5, G5, A5, B5, C6, D6. Part 2: Quarter notes D5, E5, F#5, G5, A5, B5, C6, D6.
- Guit. (Staff 6):** Treble clef, key of D major. Part 1: Quarter notes D5, E5, F#5, G5, A5, B5, C6, D6. Part 2: Quarter notes D5, E5, F#5, G5, A5, B5, C6, D6.
- El. Guit. (Staff 7):** Treble clef, key of D major. Part 1: Quarter notes D5, E5, F#5, G5, A5, B5, C6, D6. Part 2: Quarter notes D5, E5, F#5, G5, A5, B5, C6, D6.
- El. Guit. (Staff 8):** Treble clef, key of D major. Part 1: Quarter notes D5, E5, F#5, G5, A5, B5, C6, D6. Part 2: Quarter notes D5, E5, F#5, G5, A5, B5, C6, D6.
- Vlns. (Staff 9):** Treble clef, key of D major. Part 1: Quarter notes D5, E5, F#5, G5, A5, B5, C6, D6. Part 2: Quarter notes D5, E5, F#5, G5, A5, B5, C6, D6.
- D. Set (Staff 10):** Treble clef, key of D major. Part 1: Quarter notes D5, E5, F#5, G5, A5, B5, C6, D6. Part 2: Quarter notes D5, E5, F#5, G5, A5, B5, C6, D6.
- Hm. Org. (Staff 11):** Bass clef, key of D major. Part 1: Quarter notes D4, E4, F#4, G4, A4, B4, C5, D5. Part 2: Quarter notes D4, E4, F#4, G4, A4, B4, C5, D5.
- Hch. (Staff 12):** Treble clef, key of D major. Part 1: Quarter notes D5, E5, F#5, G5, A5, B5, C6, D6. Part 2: Quarter notes D5, E5, F#5, G5, A5, B5, C6, D6.
- Con. Sn. (Staff 13):** Treble clef, key of D major. Part 1: Quarter notes D5, E5, F#5, G5, A5, B5, C6, D6. Part 2: Quarter notes D5, E5, F#5, G5, A5, B5, C6, D6.
- Con. Sn. (Staff 14):** Treble clef, key of D major. Part 1: Quarter notes D5, E5, F#5, G5, A5, B5, C6, D6. Part 2: Quarter notes D5, E5, F#5, G5, A5, B5, C6, D6.
- Synth. (Staff 15):** Bass clef, key of D major. Part 1: Quarter notes D4, E4, F#4, G4, A4, B4, C5, D5. Part 2: Quarter notes D4, E4, F#4, G4, A4, B4, C5, D5.
- Synth. (Staff 16):** Bass clef, key of D major. Part 1: Quarter notes D4, E4, F#4, G4, A4, B4, C5, D5. Part 2: Quarter notes D4, E4, F#4, G4, A4, B4, C5, D5.

48

Synth.

Synth.

El. B.

Synth.

Vlins.

Guit.

El. Guit.

El. Guit.

Vlins.

D. Set

Hm. Org.

Hch.

Con. Sn.

Con. Sn.

Synth.

Synth.

50

Synth.

Synth.

El. B.

Synth.

Vlins.

Guit.

El. Guit.

El. Guit.

Vlins.

D. Set

Hm. Org.

Hch.

Con. Sn.

Con. Sn.

Synth.

Synth.

52

Musical score for page 52, featuring multiple instruments. The score is written in treble and bass clefs, with a key signature of three sharps (F#, C#, G#). The instruments and their parts are:

- Synth.** (Treble clef): Two staves, both showing rests.
- El. B.** (Bass clef): One staff, showing a melodic line with eighth and quarter notes.
- Synth.** (Treble clef): One staff, showing chords and single notes.
- Vlns.** (Treble clef): One staff, showing a melodic line with eighth and quarter notes, including a triplet of eighth notes.
- Guit.** (Treble clef): One staff, showing a melodic line with eighth and quarter notes, including a triplet of eighth notes.
- El. Guit.** (Treble clef): One staff, showing a melodic line with eighth and quarter notes.
- El. Guit.** (Treble clef): One staff, showing a melodic line with eighth and quarter notes.
- Vlns.** (Treble clef): One staff, showing a melodic line with eighth and quarter notes.
- D. Set** (Bass clef): One staff, showing a rhythmic pattern with eighth and quarter notes.
- Hm. Org.** (Bass clef): One staff, showing a melodic line with eighth and quarter notes.
- Hch.** (Treble clef): One staff, showing a melodic line with eighth and quarter notes.
- Con. Sn.** (Bass clef): Two staves, both showing rests.
- Synth.** (Bass clef): One staff, showing a melodic line with eighth and quarter notes.
- Synth.** (Bass clef): One staff, showing a melodic line with eighth and quarter notes.

54

Musical score for page 54, featuring multiple staves for various instruments. The score is written in treble and bass clefs with a key signature of three sharps (F#, C#, G#). The instruments and their parts are as follows:

- Synth.** (Top two staves): Treble clef, mostly rests.
- El. B.** (Third staff): Bass clef, melodic line with a slur and a triplet of eighth notes.
- Synth.** (Fourth staff): Treble clef, chords with a triplet of eighth notes.
- Vlns.** (Fifth staff): Treble clef, melodic line with a slur and a triplet of eighth notes.
- Guit.** (Sixth staff): Treble clef, melodic line with a slur and a triplet of eighth notes.
- El. Guit.** (Seventh staff): Treble clef, mostly rests.
- El. Guit.** (Eighth staff): Treble clef, mostly rests.
- Vlns.** (Ninth staff): Treble clef, mostly rests.
- D. Set** (Tenth staff): Treble clef, rhythmic pattern with eighth notes and rests.
- Hm. Org.** (Eleventh staff): Bass clef, melodic line with a slur and a triplet of eighth notes.
- Hch.** (Twelfth staff): Treble clef, mostly rests.
- Con. Sn.** (Thirteenth staff): Treble clef, mostly rests.
- Con. Sn.** (Fourteenth staff): Treble clef, mostly rests.
- Synth.** (Fifteenth staff): Bass clef, mostly rests.
- Synth.** (Sixteenth staff): Bass clef, mostly rests.

56

Synth.

Synth.

El. B.

Synth.

Vlins.

Guit.

El. Guit.

El. Guit.

Vlins.

D. Set

Hm. Org.

Hch.

Con. Sn.

Con. Sn.

Synth.

Synth.

58

Synth.

Synth.

El. B.

Synth.

Vlins.

Guit.

El. Guit.

El. Guit.

Vlins.

D. Set

Hm. Org.

Hch.

Con. Sn.

Con. Sn.

Synth.

Synth.

59

Synth.

Synth.

El. B.

Synth.

Vlns.

Guit.

El. Guit.

El. Guit.

Vlns.

D. Set

Hm. Org.

Hch.

Con. Sn.

Con. Sn.

Synth.

Synth.

61

Synth.

Synth.

El. B.

Synth.

Vlins.

Guit.

El. Guit.

El. Guit.

Vlins.

D. Set

Hm. Org.

Hch.

Con. Sn.

Con. Sn.

Synth.

Synth.

63

Synth.

Synth.

El. B.

Synth.

Vlns.

Guit.

El. Guit.

El. Guit.

Vlns.

D. Set

Hm. Org.

Hch.

Con. Sn.

Con. Sn.

Synth.

Synth.

65

65

Synth.

Synth.

El. B.

Synth.

Vlns.

Guit.

El. Guit.

El. Guit.

Vlns.

D. Set

Hm. Org.

Hch.

Con. Sn.

Con. Sn.

Synth.

Synth.

Downloaded from www.midicities.com

67

This musical score page contains measures 67 and 68. The key signature is D major (two sharps). The score is arranged for a large ensemble with the following parts: Synth (top two staves), El. B. (Electric Bass), Synth (third staff), Vlins. (Violins, fourth staff), Guit. (Guitar, fifth staff), El. Guit. (Electric Guitar, sixth staff), El. Guit. (Electric Guitar, seventh staff), Vlins. (Violins, eighth staff), D. Set (Drum Set, ninth staff), Hm. Org. (Hammond Organ, tenth staff), Hch. (Horn, eleventh staff), Con. Sn. (Conga Snare, twelfth staff), Con. Sn. (Conga Snare, thirteenth staff), Synth (fourteenth staff), and Synth (fifteenth staff). Measure 67 features a complex texture with chords in the Synths and El. B., a triplet in the Vlins., and a melodic line in the Guit. Measure 68 continues the texture with various instrumental contributions, including a melodic phrase in the Guit. and a rhythmic pattern in the D. Set.

Synth.

Synth.

El. B.

Synth.

Vlins.

Guit.

El. Guit.

El. Guit.

Vlins.

D. Set

Hm. Org.

Hch.

Con. Sn.

Con. Sn.

Synth.

Synth.

69

Synth.

Synth.

El. B.

Synth.

Vlins.

Guit.

El. Guit.

El. Guit.

Vlins.

D. Set

Hm. Org.

Hch.

Con. Sn.

Con. Sn.

Synth.

Synth.

70

Synth.

Synth.

El. B.

Synth.

Vlns.

Guit.

El. Guit.

El. Guit.

Vlns.

D. Set

Hm. Org.

Hch.

Con. Sn.

Con. Sn.

Synth.

Synth.

72

Synth.

Synth.

El. B.

Synth.

Vlins.

Guit.

El. Guit.

El. Guit.

Vlins.

D. Set

Hm. Org.

Hch.

Con. Sn.

Con. Sn.

Synth.

Synth.

73

73

Synth.

Synth.

El. B.

Synth.

Vlins.

Guit.

El. Guit.

El. Guit.

Vlins.

D. Set

Hm. Org.

Hch.

Con. Sn.

Con. Sn.

Synth.

Synth.

74

74

Synth.

Synth.

El. B.

Synth.

Vlins.

Guit.

El. Guit.

El. Guit.

Vlins.

D. Set

Hm. Org.

Hch.

Con. Sn.

Con. Sn.

Synth.

Synth.

76

Synth.

Synth.

El. B.

Synth.

Vlns.

Guit.

El. Guit.

El. Guit.

Vlns.

D. Set

Hm. Org.

Hch.

Con. Sn.

Con. Sn.

Synth.

Synth.

77

Musical score for page 37, measure 77. The score is written for a large ensemble, including Synthesizers, Electric Bass, Violins, Guitar, Electric Guitars, Double Bass, Horns, and Percussion. The key signature is three sharps (F#, C#, G#). The score is divided into two measures. The first measure contains a complex arrangement of notes and rests across the staves. The second measure continues the musical progression. The instruments are listed on the left side of the score, and the staves are numbered 1 through 15.

77

Synth.

Synth.

El. B.

Synth.

Vlins.

Guit.

El. Guit.

El. Guit.

Vlins.

D. Set

Hm. Org.

Hch.

Con. Sn.

Con. Sn.

Synth.

Synth.

79

Musical score for page 38, starting at measure 79. The score is written for a large ensemble, including Synthesizers, Electric Bass, Violins, Guitar, Electric Guitar, Double Bass, Horns, and Percussion. The key signature is three sharps (F#, C#, G#).

The instruments and their parts are as follows:

- Synth. (Top):** Two staves, both with a whole rest in measure 79.
- El. B.:** Electric Bass, playing a steady eighth-note pattern.
- Synth. (Middle):** One staff, with a whole rest in measure 79.
- Vlns.:** Violins, playing a melodic line with a slur over measures 79 and 80.
- Guit.:** Guitar, playing a complex rhythmic pattern with slurs and ties.
- El. Guit.:** Electric Guitar, with a whole rest in measure 79.
- El. Guit.:** Electric Guitar, with a whole rest in measure 79.
- Vlns.:** Violins, playing a melodic line with a slur over measures 79 and 80.
- D. Set:** Double Bass, playing a steady eighth-note pattern.
- Hm. Org.:** Horns, playing a steady eighth-note pattern.
- Hch.:** Horns, with a whole rest in measure 79.
- Con. Sn.:** Conga Snare, with a whole rest in measure 79.
- Con. Sn.:** Conga Snare, with a whole rest in measure 79.
- Synth.:** Synthesizer, with a whole rest in measure 79.
- Synth.:** Synthesizer, with a whole rest in measure 79.

80

Synth.

Synth.

El. B.

Synth.

Vlns.

Guit.

El. Guit.

El. Guit.

Vlns.

D. Set

Hm. Org.

Hch.

Con. Sn.

Con. Sn.

Synth.

Synth.

82

Musical score for page 82, featuring multiple staves for various instruments. The score is written in treble and bass clefs with a key signature of three sharps (F#, C#, G#). The instruments and their parts are:

- Synth.** (Top two staves): Treble clef, mostly rests.
- El. B.** (Third staff): Bass clef, eighth-note pattern.
- Synth.** (Fourth staff): Treble clef, sustained chords.
- Vlns.** (Fifth staff): Treble clef, eighth-note pattern.
- Guit.** (Sixth staff): Treble clef, eighth-note pattern.
- El. Guit.** (Seventh staff): Treble clef, sustained chords.
- El. Guit.** (Eighth staff): Treble clef, sustained chords.
- Vlns.** (Ninth staff): Treble clef, eighth-note pattern.
- D. Set** (Tenth staff): Treble clef, eighth-note pattern.
- Hm. Org.** (Eleventh staff): Bass clef, eighth-note pattern.
- Hch.** (Twelfth staff): Treble clef, mostly rests.
- Con. Sn.** (Thirteenth and fourteenth staves): Treble clef, mostly rests.
- Synth.** (Fifteenth staff): Bass clef, mostly rests.
- Synth.** (Sixteenth staff): Bass clef, mostly rests.

The score includes various musical notations such as rests, eighth notes, and sustained chords. A measure number '82' is indicated at the top left. A '3' is written below the El. B. staff in the second measure.

84

Synth.

Synth.

El. B.

Synth.

Vlins.

Guit.

El. Guit.

El. Guit.

Vlins.

D. Set

Hm. Org.

Hch.

Con. Sn.

Con. Sn.

Synth.

Synth.

86

Musical score for page 86, featuring multiple instruments. The score is written in treble and bass clefs with a key signature of three sharps (F#, C#, G#). The instruments and their parts are:

- Synth.** (Treble clef): Two staves, both showing whole rests.
- El. B.** (Bass clef): One staff, showing a melodic line with eighth and quarter notes.
- Synth.** (Treble clef): One staff, showing a sustained chord.
- Vlns.** (Treble clef): One staff, showing a melodic line with eighth and quarter notes.
- Guit.** (Treble clef): One staff, showing a sustained chord.
- El. Guit.** (Treble clef): One staff, showing a melodic line with eighth and quarter notes.
- El. Guit.** (Treble clef): One staff, showing a sustained chord.
- Vlns.** (Treble clef): One staff, showing a melodic line with eighth and quarter notes.
- D. Set** (Bass clef): One staff, showing a complex rhythmic pattern with eighth and quarter notes.
- Hm. Org.** (Bass clef): One staff, showing a melodic line with eighth and quarter notes.
- Hch.** (Treble clef): One staff, showing a sustained chord.
- Con. Sn.** (Bass clef): Two staves, both showing whole rests.
- Synth.** (Bass clef): One staff, showing a sustained chord.
- Synth.** (Bass clef): One staff, showing a sustained chord.

88

88

Synth.

Synth.

El. B.

Synth.

Vlins.

Guit.

El. Guit.

El. Guit.

Vlins.

D. Set

Hm. Org.

Hch.

Con. Sn.

Con. Sn.

Synth.

Synth.

91

91

Synth.

Synth.

El. B.

Synth.

Vlins.

Guit.

El. Guit.

El. Guit.

Vlins.

D. Set

Hm. Org.

Hch.

Con. Sn.

Con. Sn.

Synth.

Synth.

92

32

Synth.

Synth.

El. B.

Synth.

Vlins.

Guit.

El. Guit.

El. Guit.

Vlins.

D. Set

Hm. Org.

Hch.

Con. Sn.

Con. Sn.

Synth.

Synth.

Downloaded from www.midicities.com

93

Synth.

Synth.

El. B.

Synth.

Vlns.

Guit.

El. Guit.

El. Guit.

Vlns.

D. Set

Hm. Org.

Hch.

Con. Sn.

Con. Sn.

Synth.

Synth.

95

Synth.

Synth.

El. B.

Synth.

Vlins.

Guit.

El. Guit.

El. Guit.

Vlins.

D. Set

Hm. Org.

Hch.

Con. Sn.

Con. Sn.

Synth.

Synth.

96

Synth.

Synth.

El. B.

Synth.

Vlns.

Guit.

El. Guit.

El. Guit.

Vlns.

D. Set

Hm. Org.

Hch.

Con. Sn.

Con. Sn.

Synth.

Synth.

97

Synth.

Synth.

El. B.

Synth.

Vlins.

Guit.

El. Guit.

El. Guit.

Vlins.

D. Set

Hm. Org.

Hch.

Con. Sn.

Con. Sn.

Synth.

99

Musical score for page 99, featuring 16 staves with various instruments. The score is written in treble and bass clefs, with a key signature of three sharps (F#, C#, G#). The instruments and their parts are as follows:

- Synth.** (Staff 1): Treble clef, starts with a whole note chord (F#, C#, G#) and continues with a series of chords.
- Synth.** (Staff 2): Treble clef, contains whole rests.
- El. B.** (Staff 3): Bass clef, contains a melodic line with eighth and sixteenth notes.
- Synth.** (Staff 4): Treble clef, contains a series of chords.
- Vlns.** (Staff 5): Treble clef, contains a melodic line with eighth and sixteenth notes.
- Guit.** (Staff 6): Treble clef, contains a series of chords.
- El. Guit.** (Staff 7): Treble clef, contains a series of chords.
- El. Guit.** (Staff 8): Treble clef, contains a series of chords.
- Vlns.** (Staff 9): Treble clef, contains a melodic line with eighth and sixteenth notes.
- D. Set** (Staff 10): Treble clef, contains a series of chords.
- Hm. Org.** (Staff 11): Bass clef, contains a series of chords.
- Hch.** (Staff 12): Treble clef, contains whole rests.
- Con. Sn.** (Staff 13): Treble clef, contains whole rests.
- Con. Sn.** (Staff 14): Treble clef, contains whole rests.
- Synth.** (Staff 15): Bass clef, contains whole rests.
- Synth.** (Staff 16): Bass clef, contains whole rests.

101

Synth.

Synth.

El. B.

Synth.

Vlins.

Guit.

El. Guit.

El. Guit.

Vlins.

D. Set

Hm. Org.

Hch.

Con. Sn.

Con. Sn.

Synth.

Synth.

102

The musical score for page 102 features a variety of instruments. The Synth parts (top and bottom) play a melodic line in the key of D major (two sharps). The El. B. (Electric Bass) provides a steady bass line. The Vlns. (Violins) and Guit. (Guitar) play a complex, fast-paced melody with many sixteenth and thirty-second notes. The El. Guit. (Electric Guitar) plays a series of chords and single notes. The D. Set (Drum Set) provides a rhythmic foundation with a pattern of eighth and sixteenth notes. The Hm. Org. (Hammond Organ) plays a series of chords and single notes. The Hch. (Horn) plays a series of chords and single notes. The Con. Sn. (Conga Snare) plays a series of chords and single notes.

Synth.

Synth.

El. B.

Synth.

Vlns.

Guit.

El. Guit.

El. Guit.

Vlns.

D. Set

Hm. Org.

Hch.

Con. Sn.

Con. Sn.

Synth.

Synth.

103

The musical score for page 103 is arranged in a multi-staff format. The instruments and their parts are as follows:

- Synth. (Staff 1):** Treble clef, key of D major. Features a melodic line with eighth and quarter notes.
- Synth. (Staff 2):** Treble clef, key of D major. Features a melodic line with eighth and quarter notes, often in harmony with the first synth.
- El. B. (Staff 3):** Bass clef, key of D major. Features a bass line with eighth and quarter notes.
- Synth. (Staff 4):** Treble clef, key of D major. Features a sustained chordal accompaniment.
- Vlns. (Staff 5):** Treble clef, key of D major. Features a melodic line with eighth and quarter notes, including a triplet in the final measure.
- Guit. (Staff 6):** Treble clef, key of D major. Features a melodic line with eighth and quarter notes, including a triplet in the final measure.
- El. Guit. (Staff 7):** Treble clef, key of D major. Features a melodic line with eighth and quarter notes.
- El. Guit. (Staff 8):** Treble clef, key of D major. Features a sustained chordal accompaniment.
- Vlns. (Staff 9):** Treble clef, key of D major. Features a sustained chordal accompaniment.
- D. Set (Staff 10):** Treble clef, key of D major. Features a drum set pattern with eighth and quarter notes.
- Hm. Org. (Staff 11):** Bass clef, key of D major. Features a melodic line with eighth and quarter notes.
- Hch. (Staff 12):** Treble clef, key of D major. Features a melodic line with eighth and quarter notes.
- Con. Sn. (Staff 13):** Treble clef, key of D major. Features a sustained chordal accompaniment.
- Con. Sn. (Staff 14):** Treble clef, key of D major. Features a sustained chordal accompaniment.
- Synth. (Staff 15):** Bass clef, key of D major. Features a sustained chordal accompaniment.
- Synth. (Staff 16):** Bass clef, key of D major. Features a sustained chordal accompaniment.

105

Synth.

Synth.

El. B.

Synth.

Vlins.

Guit.

El. Guit.

El. Guit.

Vlins.

D. Set

Hm. Org.

Hch.

Con. Sn.

Con. Sn.

Synth.

Synth.

106

Synth.

Synth.

El. B.

Synth.

Vlins.

Guit.

El. Guit.

El. Guit.

Vlins.

D. Set

Hm. Org.

Hch.

Con. Sn.

Con. Sn.

Synth.

Synth.

107

The musical score for page 107 consists of 15 staves. The instruments and their parts are as follows:

- Synth. (Staff 1):** Treble clef, key of D major. Features a melodic line with eighth and quarter notes.
- Synth. (Staff 2):** Treble clef, key of D major. Features a melodic line with eighth and quarter notes, often in harmony with the first synth.
- El. B. (Staff 3):** Bass clef, key of D major. Features a bass line with eighth and quarter notes.
- Synth. (Staff 4):** Treble clef, key of D major. Features a sustained chordal texture.
- Vlins. (Staff 5):** Treble clef, key of D major. Features a melodic line with eighth and quarter notes.
- Guit. (Staff 6):** Treble clef, key of D major. Features a melodic line with eighth and quarter notes, including some complex rhythmic patterns.
- El. Guit. (Staff 7):** Treble clef, key of D major. Features a melodic line with eighth and quarter notes.
- El. Guit. (Staff 8):** Treble clef, key of D major. Features a sustained chordal texture.
- Vlins. (Staff 9):** Treble clef, key of D major. Features a melodic line with eighth and quarter notes.
- D. Set (Staff 10):** Treble clef, key of D major. Features a complex rhythmic pattern with many eighth notes.
- Hm. Org. (Staff 11):** Bass clef, key of D major. Features a melodic line with eighth and quarter notes.
- Hch. (Staff 12):** Treble clef, key of D major. Features a melodic line with eighth and quarter notes.
- Con. Sn. (Staff 13):** Treble clef, key of D major. Features a sustained chordal texture.
- Con. Sn. (Staff 14):** Treble clef, key of D major. Features a sustained chordal texture.
- Synth. (Staff 15):** Bass clef, key of D major. Features a sustained chordal texture.
- Synth. (Staff 16):** Bass clef, key of D major. Features a sustained chordal texture.

109

Synth.

Synth.

El. B.

Synth.

Vlins.

Guit.

El. Guit.

El. Guit.

Vlins.

D. Set

Hm. Org.

Hch.

Con. Sn.

Con. Sn.

Synth.

Synth.

110

Synth.

Synth.

El. B.

Synth.

Vlins.

Guit.

El. Guit.

El. Guit.

Vlins.

D. Set

Hm. Org.

Hch.

Con. Sn.

Con. Sn.

Synth.

Synth.

PDF download from www.midcities.com

111

Synth.

Synth.

El. B.

Synth.

Vlins.

Guit.

El. Guit.

El. Guit.

Vlins.

D. Set

Hm. Org.

Hch.

Con. Sn.

Con. Sn.

Synth.

Synth.

112

Synth.

Synth.

El. B.

Synth.

Vlns.

Guit.

El. Guit.

El. Guit.

Vlns.

D. Set

Hm. Org.

Hch.

Con. Sn.

Con. Sn.

Synth.

Synth.

Downloaded from www.midicities.com

113

Synth.

Synth.

El. B.

Synth.

Vlins.

Guit.

El. Guit.

El. Guit.

Vlins.

D. Set

Hm. Org.

Hch.

Con. Sn.

Con. Sn.

Synth.

Synth.

114

Musical score for page 62, measures 114-117. The score is written for 15 staves, each representing a different instrument or voice part. The key signature is D major (two sharps: F# and C#). The time signature is 4/4. The instruments are: Synth. (top), Synth., El. B. (Electric Bass), Synth., Vlins. (Violins), Guit. (Guitar), El. Guit. (Electric Guitar), El. Guit., Vlins., D. Set (Drum Set), Hm. Org. (Hammond Organ), Hch. (Horn), Con. Sn. (Conga Snare), Con. Sn., Synth., and Synth. (bottom). The notation includes various musical symbols such as notes, rests, accidentals, and dynamic markings. The score is arranged in a standard musical notation format with a common time signature and key signature.

Synth.

Synth.

El. B.

Synth.

Vlins.

Guit.

El. Guit.

El. Guit.

Vlins.

D. Set

Hm. Org.

Hch.

Con. Sn.

Con. Sn.

Synth.

Synth.

115

Synth.

Synth.

El. B.

Synth.

Vlins.

Guit.

El. Guit.

El. Guit.

Vlins.

D. Set

Hm. Org.

Hch.

Con. Sn.

Con. Sn.

Synth.

Synth.

116

Musical score for page 64, measures 116-117. The score is written for 15 instruments, arranged in 15 staves. The key signature is D major (two sharps). The time signature is 4/4.

The instruments and their parts are:

- Synth.** (Staff 1): Treble clef. Measures 116-117.
- Synth.** (Staff 2): Treble clef. Measures 116-117.
- El. B.** (Staff 3): Bass clef. Measures 116-117.
- Synth.** (Staff 4): Treble clef. Measures 116-117.
- Vlins.** (Staff 5): Treble clef. Measures 116-117.
- Guit.** (Staff 6): Treble clef. Measures 116-117.
- El. Guit.** (Staff 7): Treble clef. Measures 116-117.
- El. Guit.** (Staff 8): Treble clef. Measures 116-117.
- Vlins.** (Staff 9): Treble clef. Measures 116-117.
- D. Set** (Staff 10): Bass clef. Measures 116-117.
- Hm. Org.** (Staff 11): Bass clef. Measures 116-117.
- Hch.** (Staff 12): Treble clef. Measures 116-117.
- Con. Sn.** (Staff 13): Bass clef. Measures 116-117.
- Con. Sn.** (Staff 14): Bass clef. Measures 116-117.
- Synth.** (Staff 15): Bass clef. Measures 116-117.
- Synth.** (Staff 16): Bass clef. Measures 116-117.

118

118

Synth.

Synth.

El. B.

Synth.

Vlins.

Guit.

El. Guit.

El. Guit.

Vlins.

D. Set

Hm. Org.

Hch.

Con. Sn.

Con. Sn.

Synth.

Synth.

119

Synth.

Synth.

El. B.

Synth.

Vlns.

Guit.

El. Guit.

El. Guit.

Vlns.

D. Set

Hm. Org.

Hch.

Con. Sn.

Con. Sn.

Synth.

Synth.

Downloaded from www.midicities.com

120

Synth.

Synth.

El. B.

Synth.

Vlins.

Guit.

El. Guit.

El. Guit.

Vlins.

D. Set

Hm. Org.

Hch.

Con. Sn.

Con. Sn.

Synth.

Synth.

126

Synth.

Synth.

El. B.

Synth.

Vlins.

Guit.

El. Guit.

El. Guit.

Vlins.

D. Set

Hm. Org.

Hch.

Con. Sn.

Con. Sn.

Synth.

Synth.