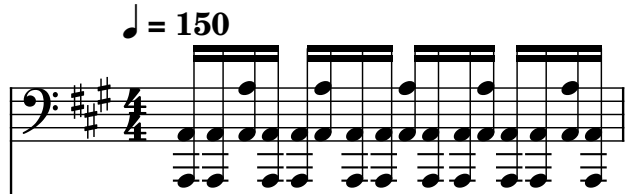
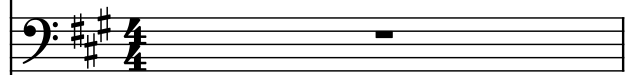


♩ = 150

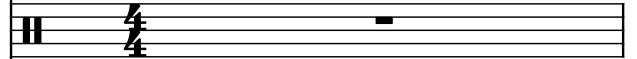
Saw Synthesizer, Bass



Brass, Brass Section



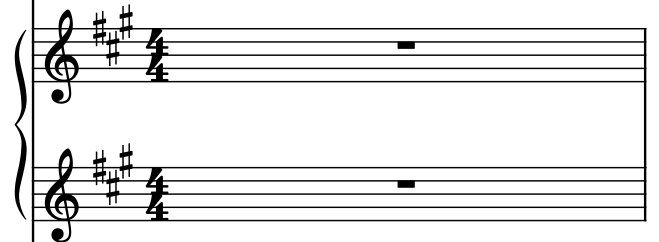
Drumset, Yamaha XG drumkit (rock) Snares and Bass



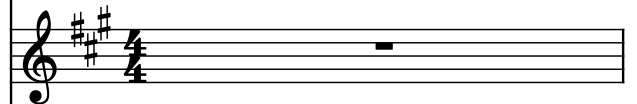
Electric Guitar, Left Guitar



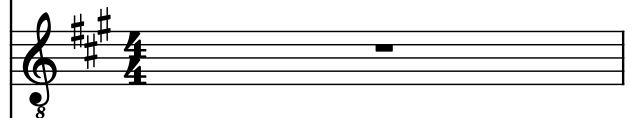
Saw Synthesizer, Falling Scratch



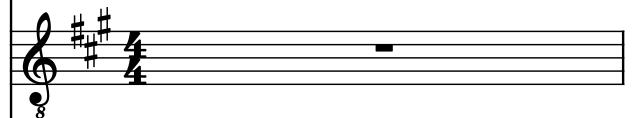
Saw Synthesizer, Main lead (1)



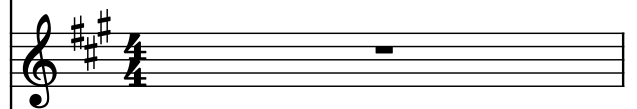
Electric Guitar, Right Guitar



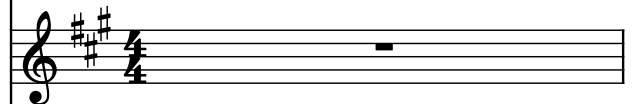
Electric Guitar, Main Lead (1a)



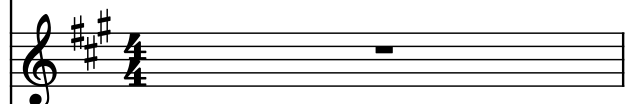
Effect Synthesizer, Main Lead (1b)



Rotary Organ, Organ



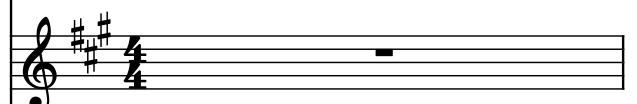
Tenor Saxophone, Brass Section



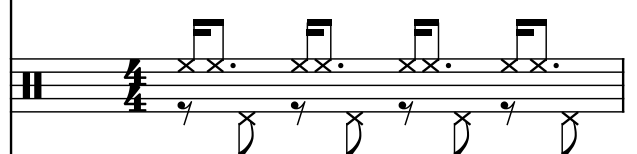
Electric Guitar, Falling Scratch



Square Synthesizer, Square Wave Left



Drumset, Treble



2

Synth.

Br.

D. Set

El. Guit.

Synth.

Synth.

El. Guit.

El. Guit.

El. Guit.

Synth.

Rot. Org.

T. Sax.

El. Guit.

Synth.

D. Set

The musical score for page 2 features a variety of instruments and staves. The top staff, labeled 'Synth.', is in bass clef and contains a complex melodic line with many beamed notes. The 'Br.' (Brass) staff is also in bass clef and has a rest for the first half of the page, followed by a melodic line in the second half. The 'D. Set' (Drum Set) staff shows a single drum hit at the beginning of the first half. The 'El. Guit.' (Electric Guitar) staff is in treble clef and has a rest for the first half. The 'Synth.' staff (second from top) is in treble clef and has a rest for the first half. The 'Synth.' staff (third from top) is in treble clef and has a rest for the first half. The 'El. Guit.' staff (fourth from top) is in treble clef and has a rest for the first half. The 'El. Guit.' staff (fifth from top) is in treble clef and has a rest for the first half. The 'El. Guit.' staff (sixth from top) is in treble clef and has a rest for the first half. The 'Synth.' staff (seventh from top) is in treble clef and has a rest for the first half. The 'Rot. Org.' (Rotary Organ) staff is in treble clef and has a rest for the first half. The 'T. Sax.' (Tenor Saxophone) staff is in treble clef and has a rest for the first half, followed by a melodic line in the second half. The 'El. Guit.' staff (eighth from top) is in treble clef and has a rest for the first half. The 'Synth.' staff (ninth from top) is in treble clef and has a rest for the first half. The 'D. Set' staff (bottom) shows a series of drum hits throughout the page.

Pdf downloaded from www.midcities.com

Pdf downloaded from www.midicities.com

5

Synth.

Br.

D. Set

El. Guit.

Synth.

Synth.

El. Guit.

El. Guit.

Synth.

Rot. Org.

T. Sax.

El. Guit.

Synth.

D. Set

Downloaded from www.midicities.com

6

Synth.

Br.

D. Set

El. Guit.

Synth.

Synth.

Synth.

El. Guit.

El. Guit.

Synth.

Rot. Org.

T. Sax.

El. Guit.

Synth.

D. Set

Downloaded from www.midcities.com

7

Synth.

Br.

D. Set

El. Guit.

Synth.

Synth.

El. Guit.

El. Guit.

Synth.

Rot. Org.

T. Sax.

El. Guit.

Synth.

D. Set

Downloaded from www.midickes.com

8

Synth.

Br.

D. Set

El. Guit.

Synth.

Synth.

El. Guit.

El. Guit.

Synth.

Rot. Org.

T. Sax.

El. Guit.

Synth.

D. Set

The musical score for page 8 features the following instruments and parts:

- Synth. (Bass):** Plays a continuous eighth-note pattern in the key of D major (two sharps).
- Br. (Bass):** Remains silent throughout the measure.
- D. Set (Drum Set):** Features a snare drum on the first half of the measure and a kick drum on the second half.
- El. Guit. (Electric Guitar):** Plays a series of eighth-note chords in the key of D major.
- Synth. (Piano):** Plays a single eighth-note chord in the key of D major.
- Synth. (Trumpet):** Plays a single eighth-note chord in the key of D major.
- El. Guit. (Electric Guitar):** Plays a series of eighth-note chords in the key of D major.
- El. Guit. (Electric Guitar):** Plays a single eighth-note chord in the key of D major.
- Synth. (Trumpet):** Plays a single eighth-note chord in the key of D major.
- Rot. Org. (Rotary Organ):** Remains silent throughout the measure.
- T. Sax. (Tenor Saxophone):** Remains silent throughout the measure.
- El. Guit. (Electric Guitar):** Plays a single eighth-note chord in the key of D major.
- Synth. (Trumpet):** Plays a single eighth-note chord in the key of D major.
- D. Set (Drum Set):** Features a snare drum on the first half of the measure and a kick drum on the second half.

9

Synth.

Br.

D. Set

El. Guit.

Synth.

Synth.

El. Guit.

El. Guit.

Synth.

Rot. Org.

T. Sax.

El. Guit.

Synth.

D. Set

10

Synth.

Br.

D. Set

El. Guit.

Synth.

Synth.

El. Guit.

El. Guit.

Synth.

Rot. Org.

T. Sax.

El. Guit.

Synth.

8

3

3

3

3

3

8

3

11

Synth.

Br.

D. Set

El. Guit.

Synth.

Synth.

El. Guit.

El. Guit.

Synth.

Rot. Org.

T. Sax.

El. Guit.

Synth.

D. Set

Downloaded from www.midicities.com

Pdf downloaded from www.midicities.com

13

Synth.

Br.

D. Set

El. Guit.

Synth.

Synth.

El. Guit.

El. Guit.

Synth.

Rot. Org.

T. Sax.

El. Guit.

Synth.

D. Set

The musical score for page 13 consists of 14 staves. The instruments and their parts are as follows:

- Synth. (Staff 1):** Bass clef, key of D major. Features a continuous eighth-note pattern in the right hand and a similar pattern in the left hand.
- Br. (Staff 2):** Bass clef, key of D major. Contains a whole rest.
- D. Set (Staff 3):** Treble clef, key of D major. Features a series of eighth and sixteenth notes, including some beamed notes.
- El. Guit. (Staff 4):** Treble clef, key of D major. Features a series of eighth and sixteenth notes, including some beamed notes.
- Synth. (Staff 5):** Treble clef, key of D major. Features a long, sustained note with a dynamic marking.
- Synth. (Staff 6):** Treble clef, key of D major. Features a long, sustained note with a dynamic marking.
- El. Guit. (Staff 7):** Treble clef, key of D major. Features a series of eighth and sixteenth notes, including some beamed notes.
- El. Guit. (Staff 8):** Treble clef, key of D major. Features a long, sustained note with a dynamic marking.
- Synth. (Staff 9):** Treble clef, key of D major. Features a long, sustained note with a dynamic marking.
- Rot. Org. (Staff 10):** Treble clef, key of D major. Contains a whole rest.
- T. Sax. (Staff 11):** Treble clef, key of D major. Contains a whole rest.
- El. Guit. (Staff 12):** Treble clef, key of D major. Contains a whole rest.
- Synth. (Staff 13):** Treble clef, key of D major. Features a series of eighth and sixteenth notes, including some beamed notes.
- D. Set (Staff 14):** Treble clef, key of D major. Features a series of eighth and sixteenth notes, including some beamed notes.

14

Synth.

Br.

D. Set

El. Guit.

Synth.

Synth.

El. Guit.

El. Guit.

Synth.

Rot. Org.

T. Sax.

El. Guit.

Synth.

Downloaded from www.midicities.com

15

Synth.

Br.

D. Set

El. Guit.

Synth.

Synth.

El. Guit.

El. Guit.

Synth.

Rot. Org.

T. Sax.

El. Guit.

Synth.

D. Set

The musical score for page 15 is written for a multi-instrument ensemble. The instruments and their parts are as follows:

- Synth. (Top):** Bass clef, key of D major. Features a continuous eighth-note pattern in the right hand and a similar pattern in the left hand.
- Br. (Bassoon):** Bass clef, key of D major. Remains silent throughout the page.
- D. Set (Drum Set):** Treble clef, key of D major. Features a pattern of eighth notes and quarter notes, with some notes beamed together.
- El. Guit. (Electric Guitar):** Treble clef, key of D major. Features a pattern of eighth notes and quarter notes, with some notes beamed together.
- Synth. (Middle):** Treble and Bass clefs, key of D major. Features a melodic line in the right hand and a bass line in the left hand.
- Synth. (Lower):** Treble clef, key of D major. Features a melodic line with a long sustain.
- El. Guit. (Lower):** Treble clef, key of D major. Features a pattern of eighth notes and quarter notes, with some notes beamed together.
- El. Guit. (Lower):** Treble clef, key of D major. Features a pattern of eighth notes and quarter notes, with some notes beamed together.
- Synth. (Lower):** Treble clef, key of D major. Features a pattern of eighth notes and quarter notes, with some notes beamed together.
- Rot. Org. (Rotary Organ):** Treble clef, key of D major. Remains silent throughout the page.
- T. Sax. (Tenor Saxophone):** Treble clef, key of D major. Remains silent throughout the page.
- El. Guit. (Lower):** Treble clef, key of D major. Features a pattern of eighth notes and quarter notes, with some notes beamed together.
- Synth. (Lower):** Treble clef, key of D major. Features a pattern of eighth notes and quarter notes, with some notes beamed together.
- D. Set (Bottom):** Treble clef, key of D major. Features a pattern of eighth notes and quarter notes, with some notes beamed together.

Pdf downloaded from www.midicities.com

17

Synth.

Br.

D. Set

El. Guit.

Synth.

Synth.

El. Guit.

El. Guit.

Synth.

Rot. Org.

T. Sax.

El. Guit.

Synth.

D. Set

Downloaded from www.midiciety.com

18

Synth.

Br.

D. Set

El. Guit.

Synth.

Synth.

El. Guit.

El. Guit.

Synth.

Rot. Org.

T. Sax.

El. Guit.

Synth.

The musical score for page 18 is arranged in a multi-staff format. The instruments and their parts are as follows:

- Synth. (Top):** Bass clef, key of D major. Features a continuous eighth-note pattern.
- Br.:** Bass clef, key of D major. Remains silent throughout the page.
- D. Set:** Treble clef, key of D major. Features a pattern of eighth and quarter notes.
- El. Guit. (Staff 4):** Treble clef, key of D major. Features a pattern of eighth notes.
- Synth. (Staff 5):** Treble and Bass clefs, key of D major. Features a melodic line with a triplet of eighth notes.
- Synth. (Staff 6):** Treble clef, key of D major. Features a melodic line with a triplet of eighth notes.
- El. Guit. (Staff 7):** Treble clef, key of D major. Features a pattern of eighth notes.
- El. Guit. (Staff 8):** Treble clef, key of D major. Features a pattern of eighth notes.
- Synth. (Staff 9):** Treble clef, key of D major. Features a melodic line with a triplet of eighth notes.
- Rot. Org.:** Treble clef, key of D major. Remains silent throughout the page.
- T. Sax.:** Treble clef, key of D major. Remains silent throughout the page.
- El. Guit. (Staff 12):** Treble clef, key of D major. Features a pattern of eighth notes.
- Synth. (Staff 13):** Treble clef, key of D major. Features a melodic line with a triplet of eighth notes.

19

Synth.

Br.

D. Set

El. Guit.

Synth.

Synth.

El. Guit.

El. Guit.

Synth.

Rot. Org.

T. Sax.

El. Guit.

Synth.

D. Set

The musical score for page 19 consists of 14 staves. The instruments are Synth. (top), Br., D. Set, El. Guit. (8), Synth. (8), Synth., El. Guit. (8), El. Guit. (8), Synth., Rot. Org., T. Sax., El. Guit. (8), Synth., and D. Set (bottom). The key signature is three sharps (F#, C#, G#). The time signature is 4/4. The score includes various musical notations such as notes, rests, and dynamic markings. The Synth. part at the top features a complex rhythmic pattern with many beamed notes. The Br. part has a single rest. The D. Set part has a few notes and rests. The El. Guit. parts feature various chordal and melodic lines. The Synth. parts have long, sustained notes. The Rot. Org. and T. Sax. parts have single rests. The El. Guit. part at the bottom has a melodic line. The D. Set part at the bottom has a rhythmic pattern with many beamed notes.

Pdf downloaded from www.midicities.com

21

21

Synth.

Br.

D. Set

El. Guit.

Synth.

Synth.

El. Guit.

El. Guit.

Synth.

Rot. Org.

T. Sax.

El. Guit.

Synth.

D. Set

21

22

Synth.

Br.

D. Set

El. Guit.

Synth.

Synth.

El. Guit.

El. Guit.

Synth.

Rot. Org.

T. Sax.

El. Guit.

Synth.

D. Set

Downloaded from www.midixes.com

23

23

Synth.

Br.

D. Set

El. Guit.

Synth.

Synth.

El. Guit.

El. Guit.

Synth.

Rot. Org.

T. Sax.

El. Guit.

Synth.

D. Set

The musical score for page 23 consists of 13 staves. The instruments and their parts are as follows:

- Synth. (Staff 1):** Bass clef, key of D major. Features a continuous eighth-note pattern in the right hand and a similar pattern in the left hand.
- Br. (Staff 2):** Bass clef, key of D major. Features a melodic line with eighth notes and rests.
- D. Set (Staff 3):** Treble clef, key of D major. Features a simple harmonic line with quarter notes.
- El. Guit. (Staff 4):** Treble clef, key of D major. Features a melodic line with eighth notes and rests.
- Synth. (Staff 5):** Treble clef, key of D major. Features a melodic line with eighth notes and rests.
- Synth. (Staff 6):** Treble clef, key of D major. Features a melodic line with eighth notes and rests.
- El. Guit. (Staff 7):** Treble clef, key of D major. Features a melodic line with eighth notes and rests.
- El. Guit. (Staff 8):** Treble clef, key of D major. Features a melodic line with eighth notes and rests.
- Synth. (Staff 9):** Treble clef, key of D major. Features a melodic line with eighth notes and rests.
- Rot. Org. (Staff 10):** Treble clef, key of D major. Features a melodic line with eighth notes and rests.
- T. Sax. (Staff 11):** Treble clef, key of D major. Features a melodic line with eighth notes and rests.
- El. Guit. (Staff 12):** Treble clef, key of D major. Features a melodic line with eighth notes and rests.
- Synth. (Staff 13):** Treble clef, key of D major. Features a melodic line with eighth notes and rests.

24

Synth.

Br.

D. Set

El. Guit.

Synth.

Synth.

El. Guit.

El. Guit.

El. Guit.

Synth.

Rot. Org.

T. Sax.

El. Guit.

Synth.

D. Set

The musical score for page 24 is written for a 12-piece ensemble. The instruments and their parts are as follows:

- Synth. (Top):** Bass clef, playing a continuous eighth-note pattern in the left hand and a similar pattern in the right hand.
- Br. (Brass):** Treble clef, playing a melodic line with some rests.
- D. Set (Drum Set):** Treble clef, playing a steady bass drum pattern with snare and cymbal accents.
- El. Guit. (Electric Guitar):** Treble clef, playing a melodic line with some rests.
- Synth. (Synthesizer):** Treble clef, playing a melodic line with some rests.
- Synth. (Synthesizer):** Treble clef, playing a melodic line with some rests.
- El. Guit. (Electric Guitar):** Treble clef, playing a melodic line with some rests.
- El. Guit. (Electric Guitar):** Treble clef, playing a melodic line with some rests.
- El. Guit. (Electric Guitar):** Treble clef, playing a melodic line with some rests.
- Synth. (Synthesizer):** Treble clef, playing a melodic line with some rests.
- Rot. Org. (Rotary Organ):** Treble clef, playing a melodic line with some rests.
- T. Sax. (Tenor Saxophone):** Treble clef, playing a melodic line with some rests.
- El. Guit. (Electric Guitar):** Treble clef, playing a melodic line with some rests.
- Synth. (Synthesizer):** Treble clef, playing a melodic line with some rests.
- D. Set (Drum Set):** Treble clef, playing a steady bass drum pattern with snare and cymbal accents.

PDF downloaded from www.midcities.com

25

Synth.

Br.

D. Set

El. Guit.

Synth.

Synth.

El. Guit.

El. Guit.

Synth.

Rot. Org.

T. Sax.

El. Guit.

Synth.

D. Set

Downloaded from www.midicities.com

26

Synth.

Br.

D. Set

El. Guit.

Synth.

Synth.

El. Guit.

El. Guit.

El. Guit.

Synth.

Rot. Org.

T. Sax.

El. Guit.

Synth.

D. Set

27

Musical score for page 27, featuring multiple staves for Synth., Br., D. Set, El. Guit., and T. Sax. The score is written in 4/4 time and includes various musical notations such as notes, rests, and bar lines. The key signature is one sharp (F#).

The staves are labeled as follows:

- Synth. (Bass clef)
- Br. (Bass clef)
- D. Set (Percussion)
- El. Guit. (Treble clef)
- Synth. (Treble clef)
- Synth. (Treble clef)
- El. Guit. (Treble clef)
- El. Guit. (Treble clef)
- Synth. (Treble clef)
- Rot. Org. (Treble clef)
- T. Sax. (Treble clef)
- El. Guit. (Treble clef)
- Synth. (Treble clef)
- D. Set (Percussion)

The score includes various musical notations such as notes, rests, and bar lines. The key signature is one sharp (F#).

28

Synth.

Br.

D. Set

El. Guit.

Synth.

Synth.

El. Guit.

El. Guit.

El. Guit.

Synth.

Rot. Org.

T. Sax.

El. Guit.

Synth.

D. Set

The musical score for page 28 is written for a multi-instrument ensemble. The key signature is G major (one sharp) and the time signature is 4/4. The instruments and their parts are as follows:

- Synth. (top):** Plays a continuous eighth-note pattern in the bass clef, starting on G2 and moving up stepwise.
- Br. (Brass):** Features a melodic line in the treble clef, starting with a rest, followed by a half note G4, a quarter note A4, and a half note B4.
- D. Set (Drum Set):** Provides a steady rhythm with a snare drum on beats 2 and 4, and a kick drum on beats 1 and 3.
- El. Guit. (Electric Guitar):** Plays a continuous eighth-note pattern in the treble clef, starting on G4 and moving up stepwise.
- Synth. (middle):** Two staves, both of which are empty.
- Synth. (bottom):** One staff, which is empty.
- El. Guit. (middle):** Two staves, both of which are empty.
- El. Guit. (bottom):** One staff, which is empty.
- Synth. (bottom):** One staff, which is empty.
- Rot. Org. (Rotary Organ):** Features a melodic line in the treble clef, starting with a rest, followed by a half note G4, a quarter note A4, and a half note B4.
- T. Sax. (Tenor Saxophone):** Features a melodic line in the treble clef, starting with a rest, followed by a half note G4, a quarter note A4, and a half note B4.
- El. Guit. (bottom):** One staff, which is empty.
- Synth. (bottom):** One staff, which is empty.
- D. Set (bottom):** Provides a steady rhythm with a snare drum on beats 2 and 4, and a kick drum on beats 1 and 3.

Pdf downloaded from www.midcities.com

29

Synth.

Br.

D. Set

El. Guit.

Synth.

Synth.

El. Guit.

El. Guit.

El. Guit.

Rot. Org.

T. Sax.

El. Guit.

Synth.

D. Set


The musical score for page 29 consists of 14 staves. The instruments and their parts are as follows:

- Synth. (Staff 1):** Bass clef, key of D major. Features a complex melodic line with many beamed sixteenth and thirty-second notes, and some triplets.
- Br. (Staff 2):** Treble clef, key of D major. Features a melodic line with some rests and a final long note.
- D. Set (Staff 3):** Treble clef, key of D major. Features a simple line with four quarter notes.
- El. Guit. (Staff 4):** Treble clef, key of D major. Features a whole rest.
- Synth. (Staff 5):** Treble clef, key of D major. Features a whole rest.
- Synth. (Staff 6):** Treble clef, key of D major. Features a whole rest.
- El. Guit. (Staff 7):** Treble clef, key of D major. Features a melodic line with many beamed sixteenth and thirty-second notes, and some triplets.
- El. Guit. (Staff 8):** Treble clef, key of D major. Features a whole rest.
- El. Guit. (Staff 9):** Treble clef, key of D major. Features a whole rest.
- Rot. Org. (Staff 10):** Treble clef, key of D major. Features a whole rest.
- T. Sax. (Staff 11):** Treble clef, key of D major. Features a melodic line with some rests and a final long note.
- El. Guit. (Staff 12):** Treble clef, key of D major. Features a whole rest.
- Synth. (Staff 13):** Treble clef, key of D major. Features a whole rest.
- D. Set (Staff 14):** Treble clef, key of D major. Features a whole rest.

30

The musical score for page 30 consists of the following staves and parts:

- Synth. (Bass):** Features a continuous eighth-note pattern in the key of D major (F# and C#).
- Br. (Trumpet):** Includes a short melodic phrase at the beginning of the measure.
- D. Set (Drum Set):** Shows a pattern of eighth notes and rests, with some notes marked with a 'z'.
- El. Guit. (Electric Guitar):** Multiple staves, some with rests and others with eighth-note patterns.
- Synth. (Synthesizer):** Multiple staves, some with rests and others with eighth-note patterns.
- Rot. Org. (Rotary Organ):** Includes a short melodic phrase at the beginning of the measure.
- T. Sax. (Tenor Saxophone):** Includes a short melodic phrase at the beginning of the measure.
- El. Guit. (Electric Guitar):** Multiple staves, some with rests and others with eighth-note patterns.
- Synth. (Synthesizer):** Multiple staves, some with rests and others with eighth-note patterns.
- D. Set (Drum Set):** Shows a pattern of eighth notes and rests, with some notes marked with an 'x'.

System.  41

Pdf downloaded from www.midicities.com

32

Synth.

Br.

D. Set

El. Guit.

Synth.

Synth.

El. Guit.

El. Guit.

Synth.

Rot. Org.

T. Sax.

El. Guit.

Synth.

The musical score for page 32 is arranged in a multi-staff format. The instruments and their parts are as follows:

- Synth. (Top):** Bass clef, key of D major. Features a complex, rhythmic melody with many beamed sixteenth notes.
- Br. (Brass):** Bass clef, key of D major. Provides a supporting harmonic line with sustained notes and some movement.
- D. Set (Drum Set):** Standard drum notation with a mix of eighth and sixteenth notes.
- El. Guit. (Electric Guitar 1):** Treble clef, key of D major. Plays a steady eighth-note accompaniment.
- Synth. (Synthesizer 1):** Treble clef, key of D major. Features a long, sustained note with a vibrato effect, followed by a melodic phrase.
- Synth. (Synthesizer 2):** Treble clef, key of D major. Similar to Synth. 1, with a sustained note and a melodic phrase.
- El. Guit. (Electric Guitar 2):** Treble clef, key of D major. Continues the eighth-note accompaniment.
- El. Guit. (Electric Guitar 3):** Treble clef, key of D major. Features a long, sustained note with a vibrato effect.
- Synth. (Synthesizer 3):** Treble clef, key of D major. Similar to Synth. 1 and 2, with a sustained note and a melodic phrase.
- Rot. Org. (Rotary Organ):** Treble clef, key of D major. Remains mostly silent throughout the page.
- T. Sax. (Tenor Saxophone):** Treble clef, key of D major. Features a melodic line with some sustained notes.
- El. Guit. (Electric Guitar 4):** Treble clef, key of D major. Features a long, sustained note with a vibrato effect.
- Synth. (Synthesizer 4):** Treble clef, key of D major. Remains mostly silent throughout the page.

The score includes various musical notations such as notes, rests, and dynamic markings. The key signature is D major (two sharps). The time signature is not explicitly shown but appears to be 4/4 based on the notation.

33

Synth.

Br.

D. Set

El. Guit.

Synth.

Synth.

El. Guit.

El. Guit.

Synth.

Rot. Org.

T. Sax.

El. Guit.

Synth.

D. Set

The musical score for page 33 consists of 14 staves. The instruments are Synth. (top), Br., D. Set, El. Guit., Synth. (middle), Synth. (bottom), El. Guit., El. Guit., Synth., Rot. Org., T. Sax., El. Guit., Synth., and D. Set (bottom). The key signature is three sharps (F#, C#, G#). The time signature is 4/4. The score includes various musical notations such as notes, rests, and articulation marks. The Synth. parts feature complex rhythmic patterns and melodic lines. The Br. part has a single note. The D. Set parts have a single note. The El. Guit. parts have a single note. The Synth. parts have a single note. The Rot. Org. part has a single note. The T. Sax. part has a single note. The El. Guit. part has a single note. The Synth. part has a single note. The D. Set part has a single note.

34

Synth.

Br.

D. Set

El. Guit.

Synth.

Synth.

El. Guit.

El. Guit.

Synth.

Rot. Org.

T. Sax.

El. Guit.

Synth.

D. Set

The musical score for page 34 is arranged in 14 staves. The instruments and their parts are as follows:

- Synth. (Staff 1):** Bass clef, key of D major. Features a repeating eighth-note pattern in the right hand and a sustained bass line in the left hand.
- Br. (Staff 2):** Bass clef, key of D major. Contains a whole rest.
- D. Set (Staff 3):** Treble clef, key of D major. Features a series of eighth notes and a half note.
- El. Guit. (Staff 4):** Treble clef, key of D major. Contains a whole rest.
- Synth. (Staff 5):** Treble clef, key of D major. Features a half note followed by a quarter note and a half note.
- Synth. (Staff 6):** Treble clef, key of D major. Contains a whole rest.
- El. Guit. (Staff 7):** Treble clef, key of D major. Features a half note followed by a quarter note and a half note.
- El. Guit. (Staff 8):** Treble clef, key of D major. Features a half note followed by a quarter note and a half note.
- Synth. (Staff 9):** Treble clef, key of D major. Features a half note followed by a quarter note and a half note.
- Rot. Org. (Staff 10):** Treble clef, key of D major. Contains a whole rest.
- T. Sax. (Staff 11):** Treble clef, key of D major. Contains a whole rest.
- El. Guit. (Staff 12):** Treble clef, key of D major. Features a half note followed by a quarter note and a half note.
- Synth. (Staff 13):** Treble clef, key of D major. Features a half note followed by a quarter note and a half note.
- D. Set (Staff 14):** Treble clef, key of D major. Features a series of eighth notes and a half note.

35

35

Synth.

Br.

D. Set

El. Guit.

Synth.

Synth.

El. Guit.

El. Guit.

Synth.

Rot. Org.

T. Sax.

El. Guit.

Synth.

D. Set

The musical score for page 35 consists of 14 staves. The instruments and their parts are as follows:

- Synth. (Staff 1):** Bass clef, key of D major. Features a continuous eighth-note melody in the right hand and a bass line in the left hand.
- Br. (Staff 2):** Bass clef, key of D major. Features a melodic line with some rests and a crescendo leading to a sustained note.
- D. Set (Staff 3):** Treble clef, key of D major. Features a simple bass line with quarter notes.
- El. Guit. (Staff 4):** Treble clef, key of D major. Features a sustained chord.
- Synth. (Staff 5):** Treble clef, key of D major. Features a sustained chord.
- Synth. (Staff 6):** Treble clef, key of D major. Features a sustained chord.
- El. Guit. (Staff 7):** Treble clef, key of D major. Features a complex melodic line with many beamed notes.
- El. Guit. (Staff 8):** Treble clef, key of D major. Features a sustained chord.
- Synth. (Staff 9):** Treble clef, key of D major. Features a sustained chord.
- Rot. Org. (Staff 10):** Treble clef, key of D major. Features a sustained chord.
- T. Sax. (Staff 11):** Treble clef, key of D major. Features a melodic line with some rests and a crescendo leading to a sustained note.
- El. Guit. (Staff 12):** Treble clef, key of D major. Features a sustained chord.
- Synth. (Staff 13):** Treble clef, key of D major. Features a sustained chord.
- D. Set (Staff 14):** Treble clef, key of D major. Features a simple bass line with quarter notes.

36

Synth.

Br.

D. Set

El. Guit.

Synth.

Synth.

Synth.

El. Guit.

El. Guit.

Synth.

Rot. Org.

T. Sax.

El. Guit.

Synth.

D. Set

The musical score for page 36 is arranged in a multi-staff format. The instruments and their parts are as follows:

- Synth. (Top):** Bass clef, key of D major. Features a continuous eighth-note pattern in the right hand and a similar pattern in the left hand.
- Br. (Bassoon):** Bass clef, key of D major. Features a long, sustained note in the left hand and a melodic line in the right hand.
- D. Set (Drum Set):** Treble clef, key of D major. Features a series of drum hits, including a snare drum and a cymbal.
- El. Guit. (Electric Guitar):** Treble clef, key of D major. Features a series of eighth-note chords in the right hand and a similar pattern in the left hand.
- Synth. (Middle):** Treble clef, key of D major. Features a series of eighth-note chords in the right hand and a similar pattern in the left hand.
- Synth. (Lower):** Treble clef, key of D major. Features a series of eighth-note chords in the right hand and a similar pattern in the left hand.
- El. Guit. (Lower):** Treble clef, key of D major. Features a series of eighth-note chords in the right hand and a similar pattern in the left hand.
- El. Guit. (Bottom):** Treble clef, key of D major. Features a series of eighth-note chords in the right hand and a similar pattern in the left hand.
- Synth. (Bottom):** Treble clef, key of D major. Features a series of eighth-note chords in the right hand and a similar pattern in the left hand.
- Rot. Org. (Rotary Organ):** Treble clef, key of D major. Features a series of eighth-note chords in the right hand and a similar pattern in the left hand.
- T. Sax. (Tenor Saxophone):** Treble clef, key of D major. Features a long, sustained note in the left hand and a melodic line in the right hand.
- El. Guit. (Bottom):** Treble clef, key of D major. Features a series of eighth-note chords in the right hand and a similar pattern in the left hand.
- Synth. (Bottom):** Treble clef, key of D major. Features a series of eighth-note chords in the right hand and a similar pattern in the left hand.
- D. Set (Bottom):** Treble clef, key of D major. Features a series of drum hits, including a snare drum and a cymbal.

Pdf downloaded from www.midicities.com

38

The musical score for page 38 is written for a multi-instrument ensemble in the key of D major (two sharps). The score consists of 14 staves. The instruments and their parts are as follows:

- Synth. (Staff 1):** Bass clef. Features a continuous eighth-note melody in the right hand and a steady eighth-note bass line in the left hand.
- Br. (Staff 2):** Treble clef. Features a melody starting on the 4th line, moving down to the 3rd space, then to the 2nd space, and finally to the 1st space.
- D. Set (Staff 3):** Treble clef. Features a melody starting on the 4th line, moving down to the 3rd space, then to the 2nd space, and finally to the 1st space.
- El. Guit. (Staff 4):** Treble clef. Features a melody starting on the 4th line, moving down to the 3rd space, then to the 2nd space, and finally to the 1st space.
- Synth. (Staff 5):** Treble clef. Features a melody starting on the 4th line, moving down to the 3rd space, then to the 2nd space, and finally to the 1st space.
- Synth. (Staff 6):** Treble clef. Features a melody starting on the 4th line, moving down to the 3rd space, then to the 2nd space, and finally to the 1st space.
- Synth. (Staff 7):** Treble clef. Features a melody starting on the 4th line, moving down to the 3rd space, then to the 2nd space, and finally to the 1st space.
- El. Guit. (Staff 8):** Treble clef. Features a melody starting on the 4th line, moving down to the 3rd space, then to the 2nd space, and finally to the 1st space.
- El. Guit. (Staff 9):** Treble clef. Features a melody starting on the 4th line, moving down to the 3rd space, then to the 2nd space, and finally to the 1st space.
- Synth. (Staff 10):** Treble clef. Features a melody starting on the 4th line, moving down to the 3rd space, then to the 2nd space, and finally to the 1st space.
- Rot. Org. (Staff 11):** Treble clef. Features a melody starting on the 4th line, moving down to the 3rd space, then to the 2nd space, and finally to the 1st space.
- T. Sax. (Staff 12):** Treble clef. Features a melody starting on the 4th line, moving down to the 3rd space, then to the 2nd space, and finally to the 1st space.
- El. Guit. (Staff 13):** Treble clef. Features a melody starting on the 4th line, moving down to the 3rd space, then to the 2nd space, and finally to the 1st space.
- Synth. (Staff 14):** Treble clef. Features a melody starting on the 4th line, moving down to the 3rd space, then to the 2nd space, and finally to the 1st space.

At the bottom of the page, there is a red text overlay: "Pdf downloaded from www.midcities.com".