

♩ = 147

6

9

11

15

20

System 1 (Measures 20-24): The music is in a key with four flats (B-flat, E-flat, A-flat, D-flat). The right hand features a melodic line with eighth and quarter notes, while the left hand provides a rhythmic accompaniment with eighth and quarter notes, including some triplets.

25

System 2 (Measures 25-29): The right hand continues the melodic development with some slurs and ties. The left hand maintains the accompaniment pattern, with occasional changes in rhythm and dynamics.

30

System 3 (Measures 30-34): This system introduces triplet markings in both hands. The right hand has a triplet of eighth notes, and the left hand has a triplet of eighth notes, adding a syncopated feel to the music.

35

System 4 (Measures 35-38): The right hand features a series of beamed sixteenth notes, creating a more active and rhythmic texture. The left hand continues with the accompaniment, including some triplet figures.

39

System 5 (Measures 39-42): The final system on the page shows the right hand with a melodic phrase that concludes with a grace note. The left hand provides a steady accompaniment, ending with a final chord.

43

Measures 43-46 of a musical score in B-flat major (three flats). Measure 43 features a piano introduction with a quintuplet of eighth notes in the right hand and a triplet of eighth notes in the left hand. Measures 44-46 continue the piece with various eighth and sixteenth note patterns and rests.

47

Measures 47-50 of the musical score. Measure 47 has a half note in the right hand and a quarter note in the left hand. Measures 48-50 show more complex rhythmic patterns, including triplets and sixteenth notes.

51

Measures 51-53 of the musical score. Measure 51 features a half note in the right hand and a quarter note in the left hand. Measures 52-53 show more complex rhythmic patterns, including triplets and sixteenth notes.

54

Measures 54-57 of the musical score. Measure 54 features a half note in the right hand and a quarter note in the left hand. Measures 55-57 show more complex rhythmic patterns, including triplets and sixteenth notes.

58

Measures 58-61 of the musical score. Measure 58 features a half note in the right hand and a quarter note in the left hand. Measures 59-61 show more complex rhythmic patterns, including triplets and sixteenth notes.

64

Measures 64-68 of a musical score in B-flat major (three flats). The piece is in 3/4 time. Measure 64 features a treble staff with a half rest and an eighth note G4, and a bass staff with a half note F4 and an eighth note G4. Measures 65-68 continue with various chordal textures and eighth-note patterns in the bass. A triplet of eighth notes (F4, G4, A4) is marked in measure 67.

69

Measures 69-72. Measure 69 has a treble staff with a half note G4 and a bass staff with a half note F4. Measure 70 features a triplet of eighth notes (F4, G4, A4) in the bass. Measure 71 has a treble staff with a half note G4 and a bass staff with a half note F4. Measure 72 ends with a treble staff half note G4 and a bass staff half note F4, followed by a triplet of eighth notes (F4, G4, A4) in the bass.

73

Measures 73-76. Measure 73 has a treble staff with a half note G4 and a bass staff with a half note F4. Measure 74 features a treble staff with a half note G4 and a bass staff with a half note F4. Measure 75 has a treble staff with a half note G4 and a bass staff with a half note F4. Measure 76 ends with a treble staff half note G4 and a bass staff half note F4, followed by a triplet of eighth notes (F4, G4, A4) in the bass.

77

Measures 77-81. Measure 77 has a treble staff with a half note G4 and a bass staff with a half note F4. Measure 78 features a treble staff with a half note G4 and a bass staff with a half note F4. Measure 79 has a treble staff with a half note G4 and a bass staff with a half note F4. Measure 80 ends with a treble staff half note G4 and a bass staff half note F4. Measure 81 features a treble staff with a half note G4 and a bass staff with a half note F4, followed by a triplet of eighth notes (F4, G4, A4) in the bass.

82

Measures 82-85. Measure 82 has a treble staff with a half note G4 and a bass staff with a half note F4. Measure 83 features a treble staff with a half note G4 and a bass staff with a half note F4. Measure 84 has a treble staff with a half note G4 and a bass staff with a half note F4. Measure 85 ends with a treble staff half note G4 and a bass staff half note F4, followed by a triplet of eighth notes (F4, G4, A4) in the bass.

86

Measures 86-89 of a musical score in B-flat major (three flats). The score is written for piano in treble and bass staves. Measure 86 features a half note in the treble and a half note in the bass. Measures 87 and 88 continue with similar patterns. Measure 89 is a whole note chord. Measure 90 begins with a new system.

90

Measures 90-94 of the musical score. Measures 90 and 91 are whole notes. Measures 92 and 93 are half notes. Measure 94 is a whole note. Measure 95 begins with a new system.

95

Measures 95-98 of the musical score. Measures 95 and 96 are half notes. Measures 97 and 98 are half notes. Measure 99 begins with a new system.

99

Measures 99 and 100 of the musical score. Measure 99 is a whole note. Measure 100 is a whole note. Measure 101 begins with a new system.

101

Measures 101-105 of the musical score. Measures 101 and 102 are half notes. Measures 103 and 104 are half notes. Measure 105 is a whole note. Measure 106 begins with a new system.

106

Measures 106-108 of a musical score in E-flat major (three flats). Measure 106 features a treble staff with a half note chord (F4, A-flat4) and a bass staff with a half note chord (B-flat3, D4). Measure 107 has a treble staff with a half note chord (F4, A-flat4) and a bass staff with a half note chord (B-flat3, D4). Measure 108 has a treble staff with a half note chord (F4, A-flat4) and a bass staff with a half note chord (B-flat3, D4). A triplet of eighth notes (F4, A-flat4, B-flat4) is marked in the treble staff of measure 108.

109

Measures 109-112 of a musical score in E-flat major (three flats). Measure 109 has a treble staff with a half note chord (F4, A-flat4) and a bass staff with a half note chord (B-flat3, D4). Measure 110 has a treble staff with a half note chord (F4, A-flat4) and a bass staff with a half note chord (B-flat3, D4). Measure 111 has a treble staff with a half note chord (F4, A-flat4) and a bass staff with a half note chord (B-flat3, D4). Measure 112 has a treble staff with a half note chord (F4, A-flat4) and a bass staff with a half note chord (B-flat3, D4). Triplet markings are present in the bass staff of measures 110 and 112.

113

Measures 113-114 of a musical score in E-flat major (three flats). Measure 113 has a treble staff with a half note chord (F4, A-flat4) and a bass staff with a half note chord (B-flat3, D4). Measure 114 has a treble staff with a half note chord (F4, A-flat4) and a bass staff with a half note chord (B-flat3, D4). A triplet of eighth notes (F4, A-flat4, B-flat4) is marked in the bass staff of measure 114.

115

Measures 115-117 of a musical score in E-flat major (three flats). Measure 115 has a treble staff with a half note chord (F4, A-flat4) and a bass staff with a half note chord (B-flat3, D4). Measure 116 has a treble staff with a half note chord (F4, A-flat4) and a bass staff with a half note chord (B-flat3, D4). Measure 117 has a treble staff with a half note chord (F4, A-flat4) and a bass staff with a half note chord (B-flat3, D4).

118

Measures 118-120 of a musical score in E-flat major (three flats). Measure 118 has a treble staff with a half note chord (F4, A-flat4) and a bass staff with a half note chord (B-flat3, D4). Measure 119 has a treble staff with a half note chord (F4, A-flat4) and a bass staff with a half note chord (B-flat3, D4). Measure 120 has a treble staff with a half note chord (F4, A-flat4) and a bass staff with a half note chord (B-flat3, D4). A triplet of eighth notes (F4, A-flat4, B-flat4) is marked in the bass staff of measure 120.

121

System 121-124: Treble and bass staves in B-flat major. Treble staff features a melodic line with eighth and sixteenth notes, including a triplet of eighth notes. Bass staff features a steady eighth-note accompaniment. Measure 124 ends with a double bar line.

125

System 125-128: Continuation of the previous system. Treble staff has a melodic line with some rests. Bass staff continues the eighth-note accompaniment. Measure 128 ends with a double bar line.

130

System 130-135: Treble staff features a melodic line with eighth and sixteenth notes. Bass staff continues the eighth-note accompaniment. Measure 135 ends with a double bar line.

136

System 136-140: Treble staff features a melodic line with eighth and sixteenth notes. Bass staff continues the eighth-note accompaniment. Measure 140 ends with a double bar line.

141

System 141-146: Treble staff features a melodic line with eighth and sixteenth notes. Bass staff continues the eighth-note accompaniment. Measure 146 ends with a double bar line.

147

System 147-151: Treble staff features a melodic line with eighth and sixteenth notes. Bass staff continues the eighth-note accompaniment. Measure 151 ends with a double bar line.

153

158

164

169

173

175



177

System 1 (measures 177-180) in E-flat major (three flats). Measure 177 features a triplet of eighth notes in the right hand. Measure 178 has a half note in the right hand and a quarter note in the left hand. Measure 179 has a half note in the right hand and a quarter note in the left hand. Measure 180 has a half note in the right hand and a quarter note in the left hand.

181

System 2 (measures 181-183). Measure 181 has a half note in the right hand and a quarter note in the left hand. Measure 182 has a half note in the right hand and a quarter note in the left hand. Measure 183 has a half note in the right hand and a quarter note in the left hand.

184

System 3 (measures 184-186). Measure 184 has a half note in the right hand and a quarter note in the left hand. Measure 185 has a half note in the right hand and a quarter note in the left hand. Measure 186 has a half note in the right hand and a quarter note in the left hand.

187

System 4 (measures 187-190). Measure 187 has a half note in the right hand and a quarter note in the left hand. Measure 188 has a half note in the right hand and a quarter note in the left hand. Measure 189 has a half note in the right hand and a quarter note in the left hand. Measure 190 has a half note in the right hand and a quarter note in the left hand.

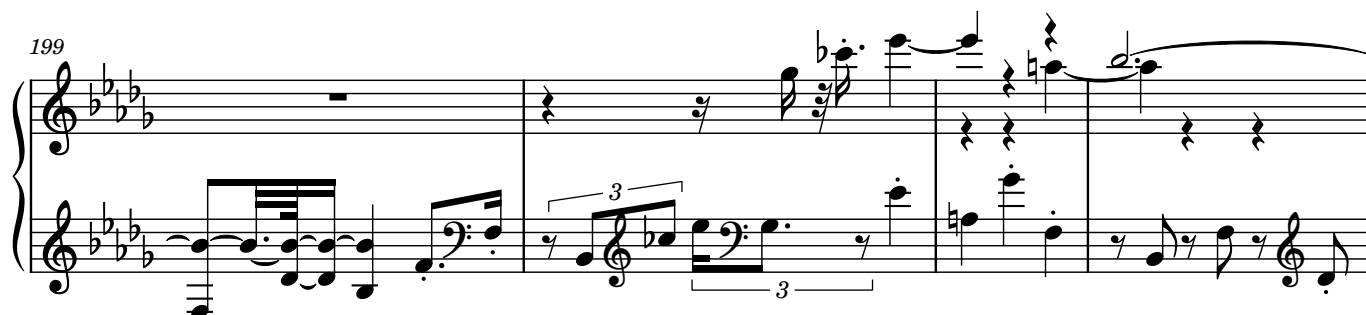
191

System 5 (measures 191-194). Measure 191 has a half note in the right hand and a quarter note in the left hand. Measure 192 has a half note in the right hand and a quarter note in the left hand. Measure 193 has a half note in the right hand and a quarter note in the left hand. Measure 194 has a half note in the right hand and a quarter note in the left hand.

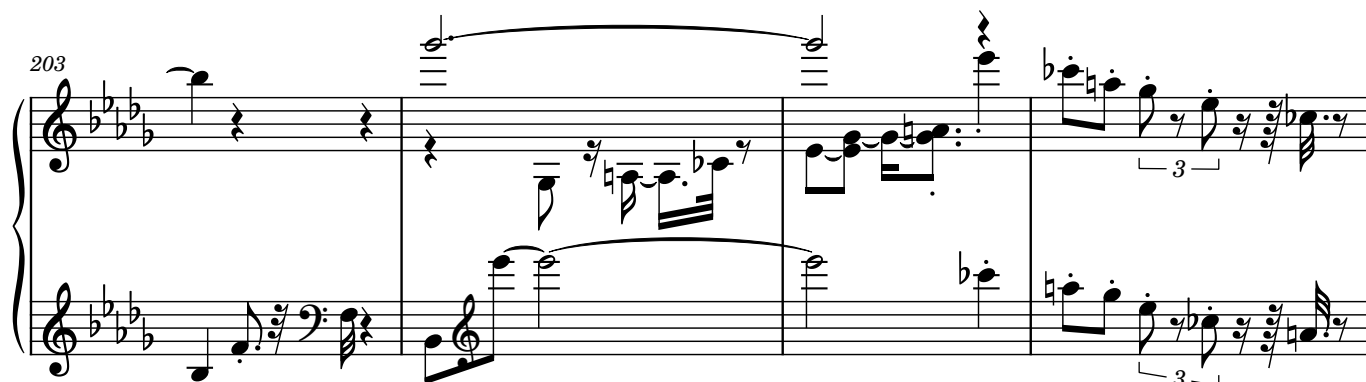
195



199



203



207



215

